

ORDINANCE #18-06

**CITY OF RAMSEY
ANOKA COUNTY
STATE OF MINNESOTA**

**AN ORDINANCE VACATING DRAINAGE AND UTILITY EASEMENTS AND TRAIL EASEMENT
WITHIN OUTLOT A BROOKFIELD SECOND ADDITION.**

SECTION 1. AUTHORITY

This ordinance is adopted pursuant to and under the authority of the Home Rule Charter of the City of Ramsey, Section 12.06 and Minnesota Statutes 412.851.

SECTION 2. VACATION

The following described drainage and utility easements, as indicated by Exhibit A attached hereto, are hereby vacated, to-wit:

All of the drainage and utility easements as dedicated on the recorded plats of BROOKFIELD FIRST ADDITION AND BROOKFIELD SECOND ADDITION, which lie within Outlot A, BROOKFIELD SECOND ADDITION, Anoka County, Minnesota.

-and-

The following described trail easement within Outlot A, BROOKFIELD SECOND ADDITION, Anoka County, Minnesota, as indicated by Exhibit B attached hereto and established by Document Numbers 2013477.002 and 2013477.003, is hereby vacated, to-wit:

Commencing at the Northeast corner of said Outlot A; thence on an assumed bearing of South 04 degrees 00 minutes 47 seconds East, along the east line of said Outlot A, a distance of 614.81 feet to the point of beginning of said centerline; thence South 76 degrees 49 minutes 09 seconds West a distance of 317,13 feet; thence South 26 degrees 39 minutes 39 seconds West a distance of 184.12 feet; thence South 50 degrees 05 minutes 58 seconds West a distance of 21-31 feet; thence South 71 degrees 42 minutes 25 seconds West a distance of 102-42 feet; thence South 57 degrees 10 minutes 25 seconds West a distance of 168,14 feet; thence South 53 degrees 31 minutes 29 seconds West a distance of 80,28 feet; thence North 76 degrees 38 minutes 08 seconds West a distance of 83,49 feet; thence North 75 degrees 18 minutes 44 seconds West a distance of 30.00 feet; and said centerline terminating.

The side lines are prolonged or shortened to terminate on the east line of Outlot A, BROOKFIELD SECOND ADDITION.

SECTION 3. EFFECTIVE DATE

This ordinance becomes effective 30 days after its passage and publication, subject to City Charter Section 5.04.

PASSED by the City Council of the City of Ramsey, Minnesota the 13th day of February, 2018.

Mayor

ATTEST:

City Clerk

Introduction date:

Posting dates:

Adoption date:

Publication date:

Effective date:

Exhibit A

Legal Description and Exhibit for Drainage and Utility Easements Vacation

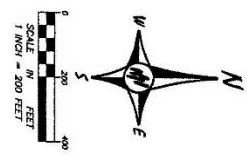
All of the drainage and utility easements as dedicated on the recorded plats of BROOKFIELD FIRST ADDITION AND BROOKFIELD SECOND ADDITION, which lie within Outlot A, BROOKFIELD SECOND ADDITION, Anoka County, Minnesota.

The remainder of this page intentionally left blank

BROOKFIELD FIRST ADDITION

OFFICIAL PLAT

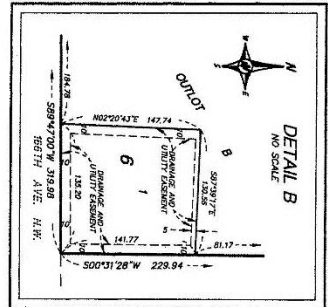
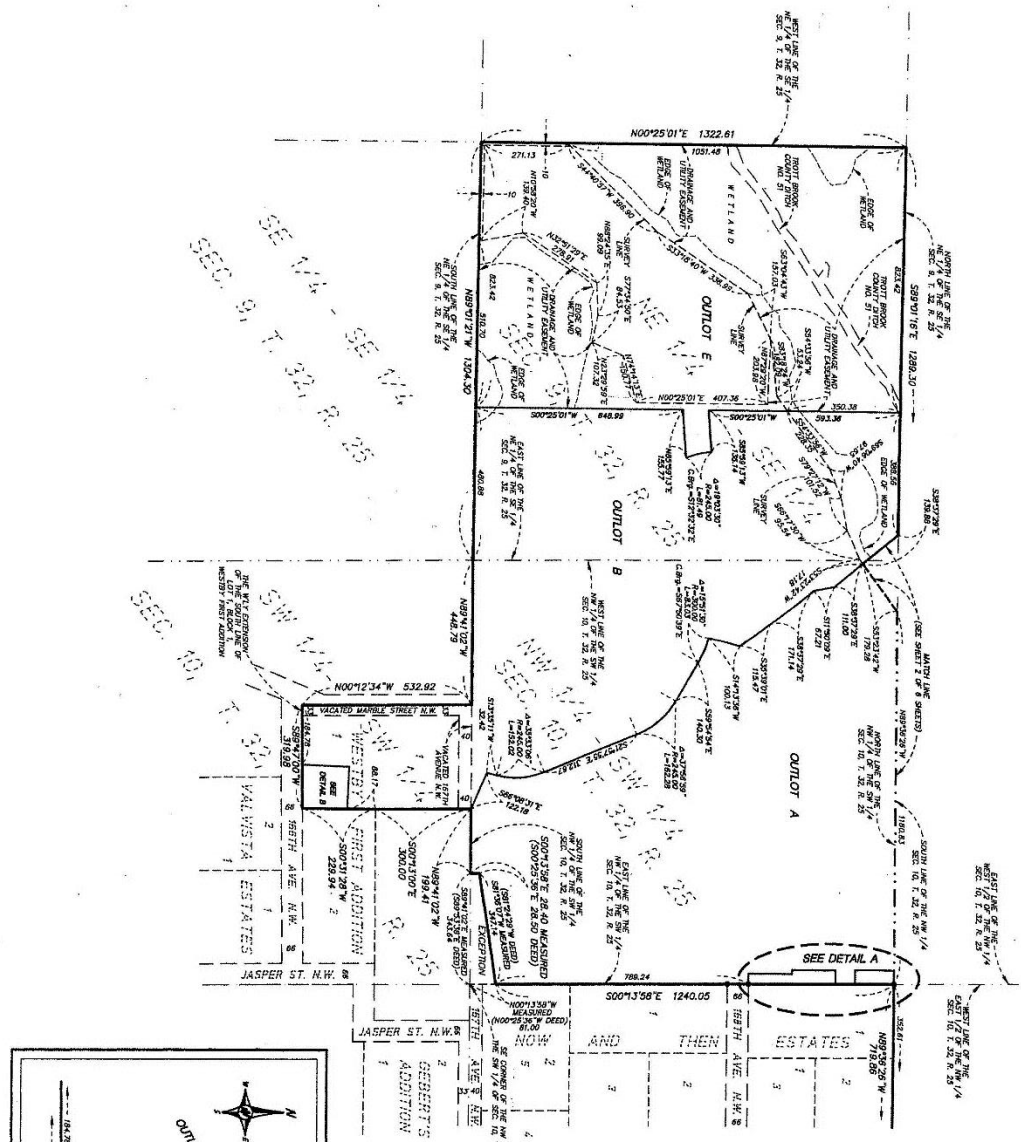
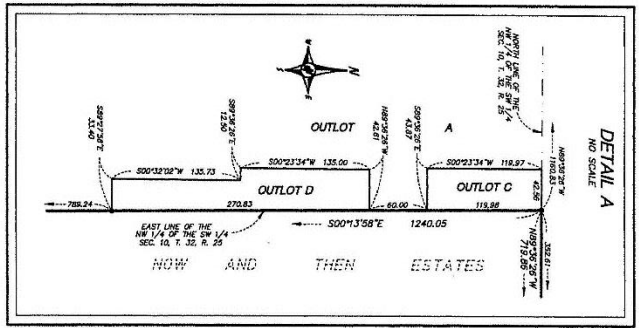
Book 72 of Ab4 Reg 57 CITY OF RAMSEY
 COUNTY OF ANDOKA
 SEC. 9 & 10, T. 32, R. 25



FOR THE PURPOSES OF THIS PLAT, THE NORTH LINE OF THE NORTHWEST QUARTER OF THE SOUTHWEST QUARTER OF SECTION 10, T. 32, R. 25, SHALL BE CONSIDERED TO HAVE A BEARING OF SOUTH 89 DEGREES 00 MINUTES 16 SECONDS EAST.

• DEVICES FROM PINE MONUMENT ROUND

ALL MONUMENTS REQUIRED BY MINNESOTA STATUTE AND NOT SHOWN ON THIS PLAT, WILL BE SET HEREIN AND SHALL BE ENDORSED BY A 1/2 INCH BY 1 1/4 INCH PINE PINE MARKED BY R.L.S. NO. 23287



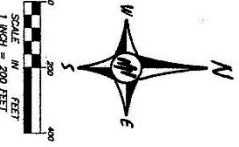
PASSE ENGINEERING, INC.
 REGISTERED PROFESSIONAL ENGINEERS
 LICENSED LAND SURVEYORS

SHEET 3 OF 6 SHEETS

OFFICIAL PLAN

BROOKFIELD SECOND ADDITION

CITY OF RAMSEY
COUNTY OF ANOKA
SECS 9 & 10 T. 32 R. 25
Book 74 Page 20



FOR THE PURPOSES OF THIS PLAN, THE WEST LINE OF SECTION 9, T. 32, R. 25 SHALL BE CONSIDERED TO HAVE A BEARING OF NORTH 90 DEGREES 25 MINUTES 01 SECONDS EAST.

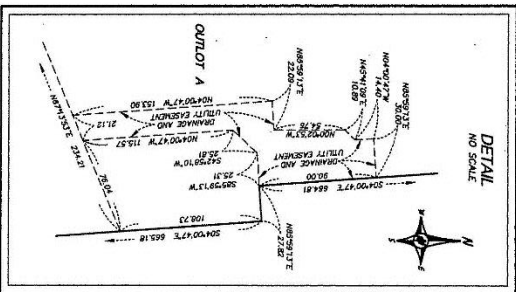
ALL MOVEMENTS REQUIRED BY MINNESOTA STATUTE AND SHALL BE ENDED BY A 1/2 INCH BY 14 INCH IRON PIPE MARKED BY P.L.S. NO. 25287

NW 1/4 - SE 1/4
SEC. 9, T. 32, R. 25

SE 1/4 - NE 1/4
SEC. 9, T. 32, R. 25

SE 1/4 - SE 1/4
SEC. 9, T. 32, R. 25

SEC. 10, T. 32, R. 25



FIRST

HODDONALD
SECOND
ADDITION

HODDONALD
ADDITION

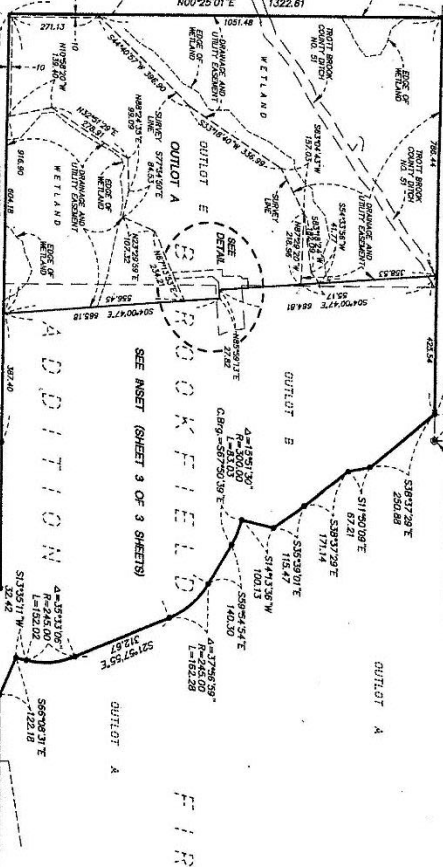


Exhibit B
Legal Description and Exhibit for Trail Easement Vacation
(Easement created by Document Numbers 2013477.002 and 2013477.003)

Commencing at the Northeast corner of said Outlot A; thence on an assumed bearing of South 04 degrees 00 minutes 47 seconds East, along the east line of said Outlot A, a distance of 614.81 feet to the point of beginning of said centerline; thence South 76 degrees 49 minutes 09 seconds West a distance of 317,13 feet; thence South 26 degrees 39 minutes 39 seconds West a distance of 184.12 feet; thence South 50 degrees 05 minutes 58 seconds West a distance of 21-31 feet; thence South 71 degrees 42 minutes 25 seconds West a distance of 102-42 feet; thence South 57 degrees 10 minutes 25 seconds West a distance of 168,14 feet; thence South 53 degrees 31 minutes 29 seconds West a distance of 80,28 feet; thence North 76 degrees 38 minutes 08 seconds West a distance of 83,49 feet; thence North 75 degrees 18 minutes 44 seconds West a distance of 30.00 feet; and said centerline terminating.

The side lines are prolonged or shortened to terminate on the east line of Outlot A, BROOKFIELD SECOND ADDITION.

