

# RUM RIVER PRAIRIE

KNOW ALL PERSONS BY THESE PRESENTS: That Brookview Estates, LLC, a Minnesota limited liability company, owner of the following described property:

The Southeast Quarter of the Northeast Quarter and the Southwest Quarter of the Northeast Quarter of Section 7, Township 32, Range 25, Anoka County, Minnesota, except that part that has been platted as Anoka Count Highway Right of Way Plat No. 33

Has caused the same to be surveyed and platted as RUM RIVER PRAIRIE and does hereby dedicate to the public for public use the public ways and the drainage and utility easements as shown on this plat.

In witness whereof said Brookview Estates, LLC, a Minnesota limited liability company, has caused these presents to be signed by its proper officer this \_\_\_\_ day of \_\_\_\_\_, 20\_\_\_\_.

Brookview Estates, LLC

By \_\_\_\_\_

\_\_\_\_\_, as \_\_\_\_\_

State of Minnesota  
County of \_\_\_\_\_

This instrument was acknowledged before me on \_\_\_\_\_ by \_\_\_\_\_, as \_\_\_\_\_ of Brookview Estates, LLC, a Minnesota limited liability company.

\_\_\_\_\_

Notary Public, \_\_\_\_\_ County, Minnesota  
My commission expires \_\_\_\_\_

I Kyle J. Roddy do hereby certify that this plat was prepared by me or under my direct supervision; that I am a duly Licensed Land Surveyor in the State of Minnesota; that this plat is a correct representation of the boundary survey; that all mathematical data and labels are correctly designated on this plat; that all monuments depicted on this plat have been, or will be correctly set within one year; that all water boundaries and wet lands, as defined in Minnesota Statutes, Section 505.01, Subd. 3, as of the date of this certificate are shown and labeled on this plat; and all public ways are shown and labeled on this plat.

Dated this \_\_\_\_ day of \_\_\_\_\_, 20\_\_\_\_\_.

\_\_\_\_\_  
Kyle J. Roddy, Licensed Land Surveyor  
Minnesota License Number 42627

State of Minnesota  
County of \_\_\_\_\_

This instrument was acknowledged before me on \_\_\_\_\_ by Kyle J. Roddy.

\_\_\_\_\_

Notary Public, \_\_\_\_\_ County, Minnesota  
My commission expires \_\_\_\_\_

CITY COUNCIL, CITY OF RAMSEY, MINNESOTA

This plat of COVENANT MEADOWS was approved and accepted by the City Council of the City of Ramsey, Minnesota at a regular meeting thereof held this \_\_\_\_ day of \_\_\_\_\_, 20\_\_\_\_, and said plat is in compliance with the provisions of Minnesota Statutes, Section 505.03, Subd. 2.

CITY COUNCIL, CITY OF RAMSEY, MINNESOTA

By: \_\_\_\_\_, Acting Mayor

By: \_\_\_\_\_, City Clerk

ANOKA COUNTY SURVEYOR

I hereby certify that in accordance with Minnesota Statutes, Section 505.021, Subd. 11, this plat has been reviewed and approved this \_\_\_\_ day of \_\_\_\_\_, 20\_\_\_\_\_.

\_\_\_\_\_  
Larry D. Holium, Anoka County Surveyor

COUNTY AUDITOR/TREASURER

Pursuant to Minnesota Statutes, Section 505.021, Subd. 9, taxes payable in the year 20\_\_\_\_ on the land hereinbefore described have been paid. Also, pursuant to Minnesota Statutes, Section 272.12, there are no delinquent taxes and transfer entered this \_\_\_\_ day of \_\_\_\_\_, 20\_\_\_\_\_.

\_\_\_\_\_  
Property Tax Administrator

By \_\_\_\_\_, Deputy

COUNTY RECORDER/REGISTRAR OF TITLES

County of Anoka, State of Minnesota

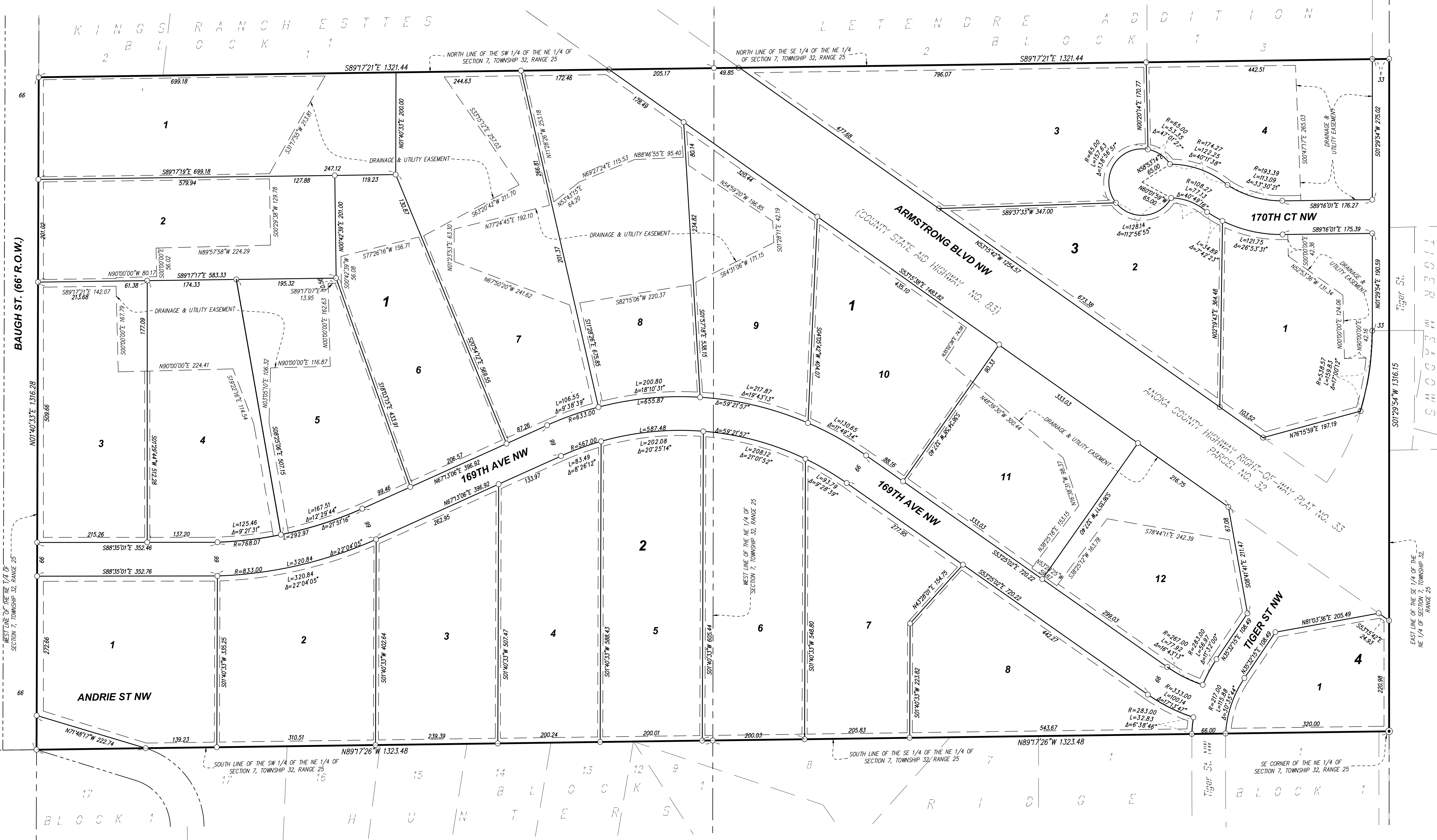
I hereby certify that this plat of COVENANT MEADOWS was filed in the office of the County Recorder/Registrar of Titles for public record on this \_\_\_\_ day of \_\_\_\_\_, 20\_\_\_\_, at \_\_\_\_ o'clock \_\_\_\_ M. and was duly recorded as Document Number \_\_\_\_\_.

\_\_\_\_\_  
County Recorder/Registrar of Titles

By \_\_\_\_\_, Deputy

# RUM RIVER PRAIRIE

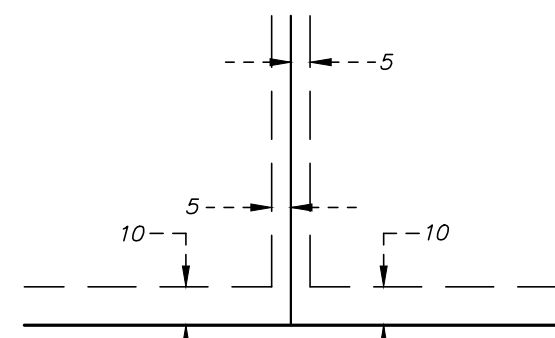
CITY OF RAMSEY  
COUNTY OF ANOKA  
SECTION 7, T. 32, R. 25



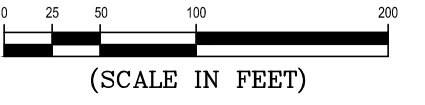
**BEARING NOTE**  
FOR THE PURPOSES OF THIS PLAT, THE SOUTH LINE OF OUTLOT A, MEADOWBROOK, IS ASSUMED TO BEAR SOUTH 89 DEGREES 49 MINUTES 40 SECONDS WEST.

- LEGEND**
- DENOTES ANOKA COUNTY CAST IRON MONUMENT
  - DENOTES SET 1/2" IRON PIPE WITH CAP MARKED R.L.S. 42627
  - DENOTES FOUND IRON PIPE

DRAINAGE AND UTILITY EASEMENTS ARE SHOWN THUS:



BEING 5 FEET IN WIDTH AND ADJOINING SIDE LOT LINES, ALSO BEING 10 FEET IN WIDTH AND ADJOINING RIGHT-OF-WAY AND REAR LOT LINES, UNLESS OTHERWISE SHOWN ON THIS PLAT.



COPYRIGHT 2016 BY LHB, INC. ALL RIGHTS RESERVED.

