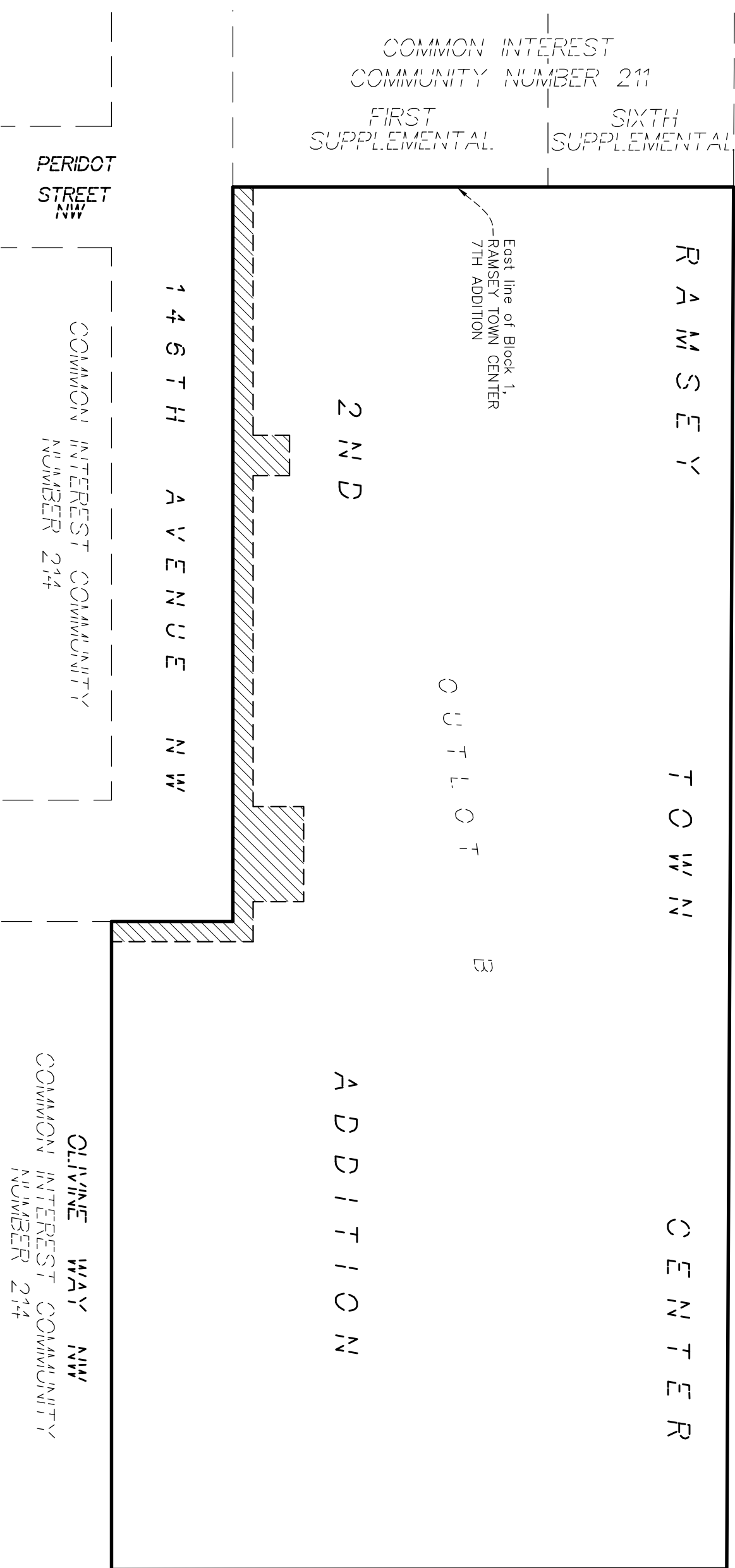


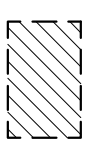
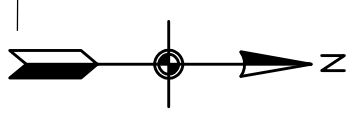
# Drainage and Utility Easement Vacation Sketch

BUNKER LAKE BLVD. NW  
 (C. S. A. H. N. O. 116)

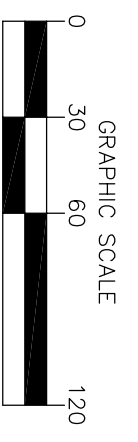


East line of Block 1,  
 RAMSEY TOWN CENTER  
 7TH ADDITION

ANOKA COUNTY HIGHWAY RIGHT OF WAY PLAT NO. 16  
 RAMSEY BLVD. NW  
 (C. S. A. H. N. O. 56)



Drainage and Utility  
 Easement Vacation Area



***DRAINAGE AND UTILITY EASEMENT VACATION DESCRIPTION:***

All of the drainage and utility easements, as created and dedicated over, under, and across Outlot B, RAMSEY TOWN CENTER 2ND ADDITION, according to recorded plat thereof, Anoka County, Minnesota, lying easterly of the easterly line of Block 1, RAMSEY TOWN CENTER 7TH ADDITION and its southerly extension thereof.

Said easement vacation area ±5,868 sq. ft.



ENVIRONMENTAL ENGINEERING SURVEYING

3890 Pheasant Ridge Drive NE,

Suite 100, Blaine, MN 55449

Phone: 763-489-7900 Fax: 763-489-7959

1342 7351\_du vac sketch