

Councilmember _____ introduced the following resolution and moved for its adoption:

RESOLUTION #18-265

RESOLUTION APPROVING PAXMAR ALTERNATIVES TO BE INCLUDED IN THE COMPREHENSIVE PLAN UPDATE

WHEREAS, the City Council has completed a draft of its Comprehensive Plan Update; and.

WHEREAS, Paxmar/AKM Farms has requested revisions to said draft.

NOW THEREFORE, BE IT RESOLVED BY THE CITY COUNCIL OF THE CITY OF RAMSEY, ANOKA COUNTY, STATE OF MINNESOTA, as follows:

- 1) That the City Council approves the alternatives for the Paxmar parcels as indicated in Exhibit A attached hereto.
 - a. This action is non-binding, but does direct Staff to include in the final draft. Final approval comes in the form of final approval of the Comprehensive Plan Update.

That the motion for the adoption of the foregoing resolution was duly seconded by Councilmember and upon vote being taken thereon, the following voted in favor:

and the following voted against the same:

and the following abstained:

and the following were absent:

whereupon said resolution was declared duly passed and adopted by the Ramsey City Council this 11th of December, 2018.

Mayor

ATTEST:

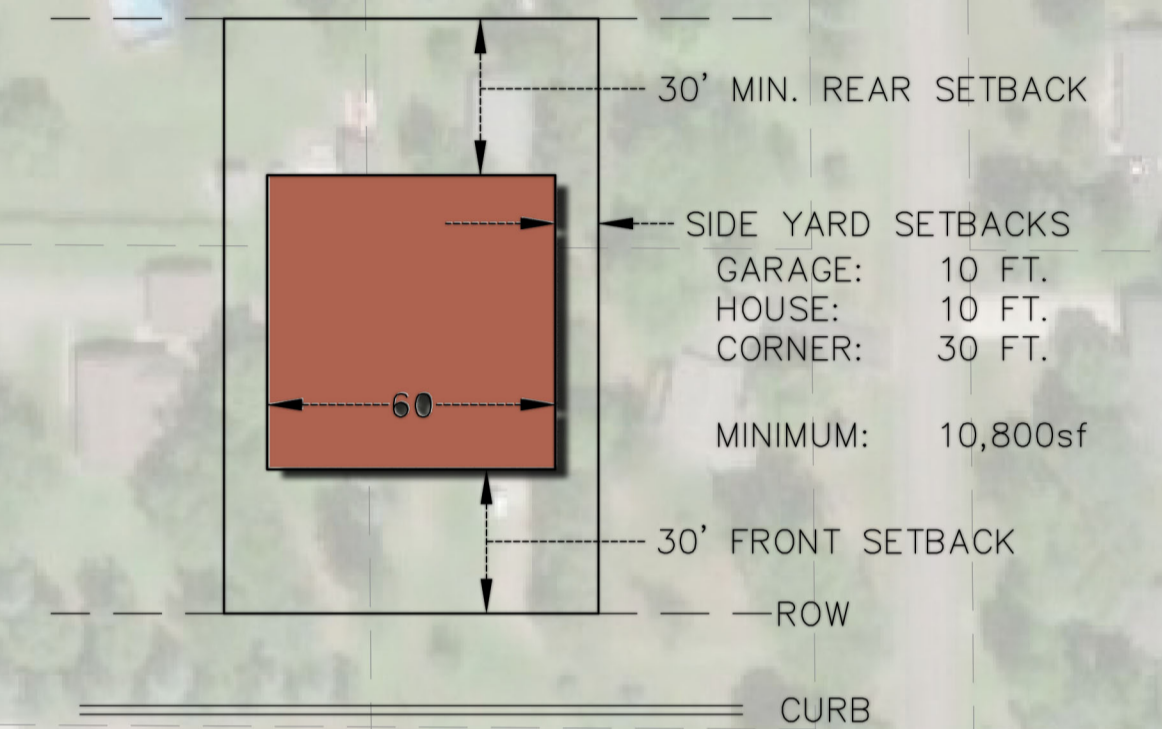
City Clerk

Exhibit A
Paxmar Alternatives

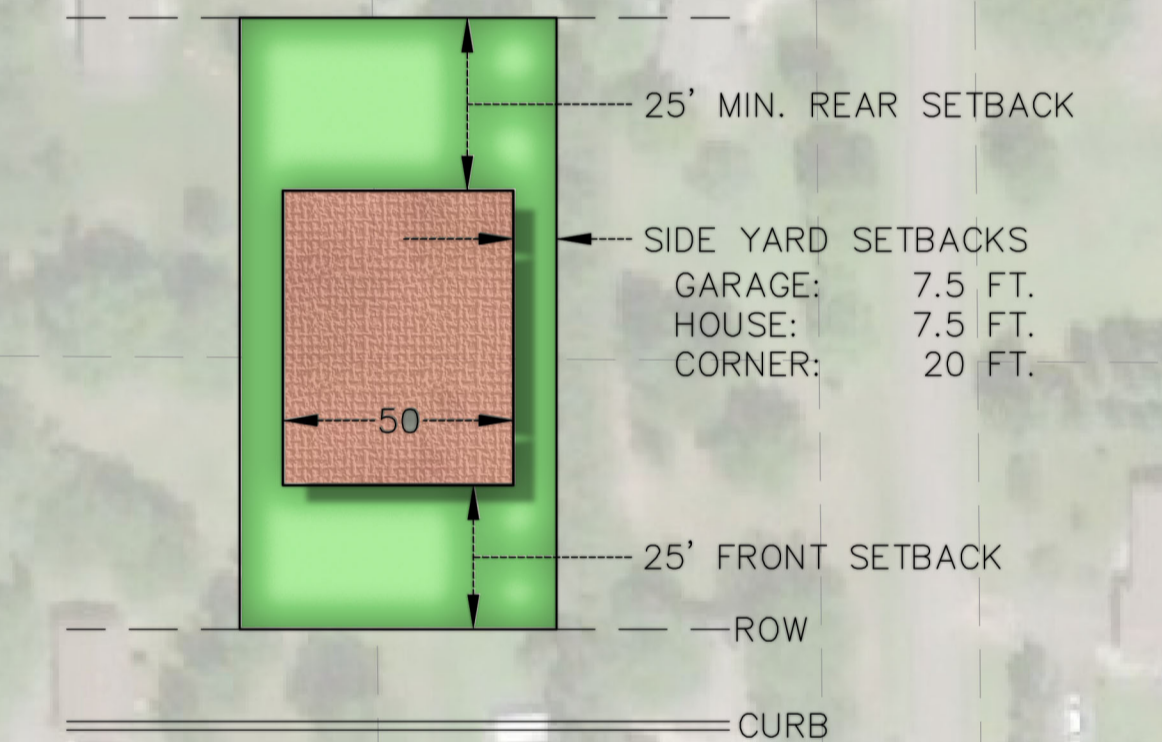
North Fork Meadows

PAXMAR

80' SINGLE FAMILY - R1



65' SINGLE FAMILY - R2

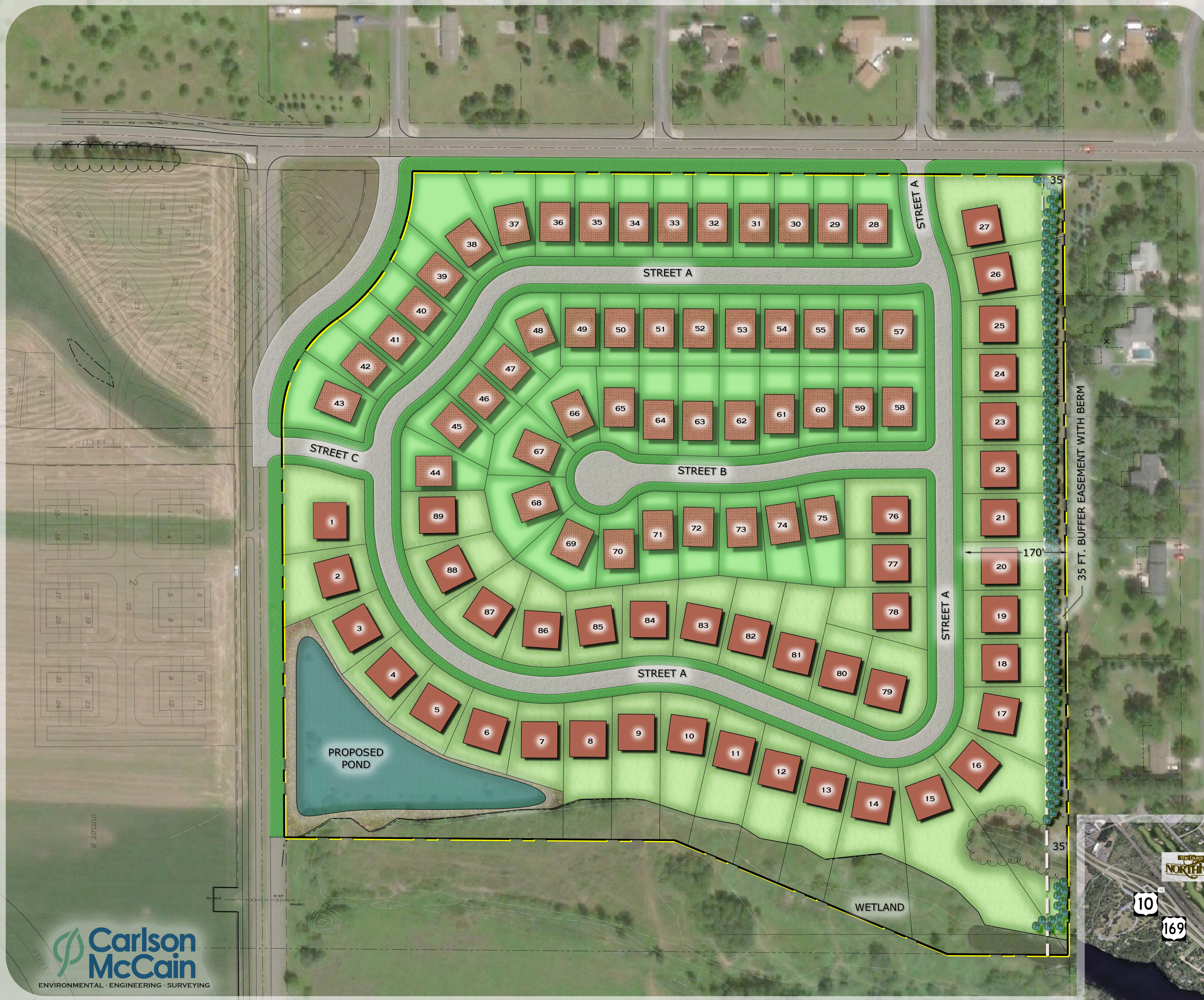


NOTES

- 1) Subject property address — Southeast quadrant of Puma Street & Alpine Drive NW, Ramsey, MN 55303.

SITE DATA

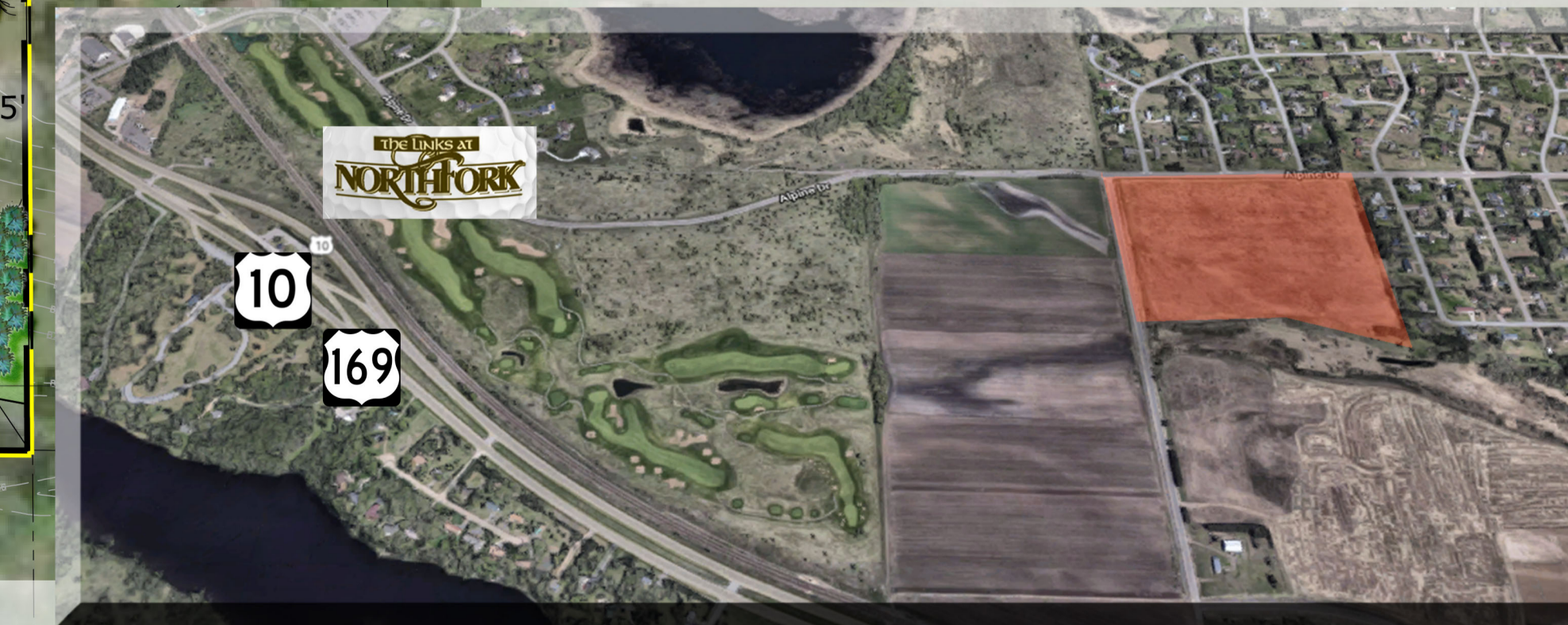
TOTAL BOUNDARY AREA	±33.5 AC.
TOTAL NUMBER OF LOTS	89
65 FT. LOTS	48
80 FT. LOTS	41
NET DENSITY	3.34 LOTS/AC
(EXCLUDES ROW AND WETLAND)	



35 FT. BUFFER EASEMENT WITH BERM

170'

35'

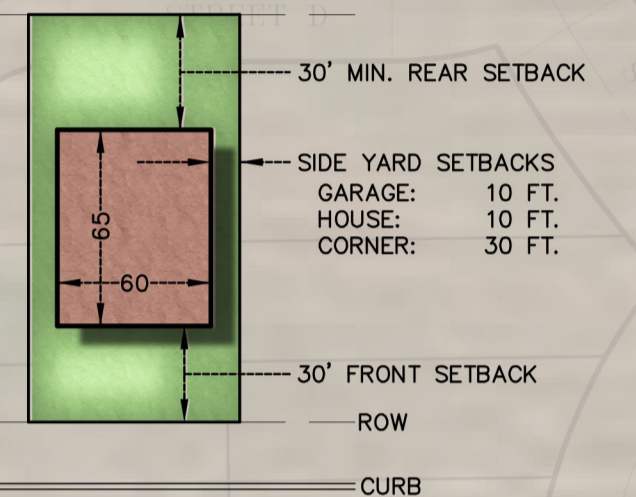




North Fork

PAXMAR

80' SINGLE FAMILY

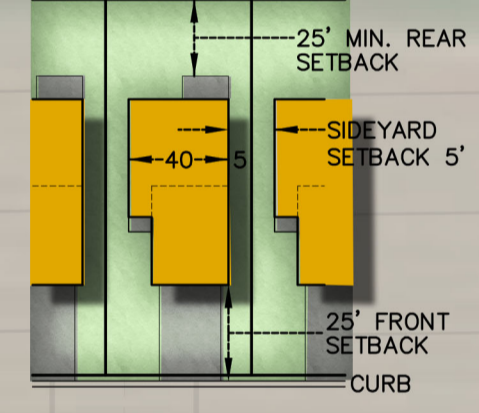


80ft BUILDING SETBACK DATA

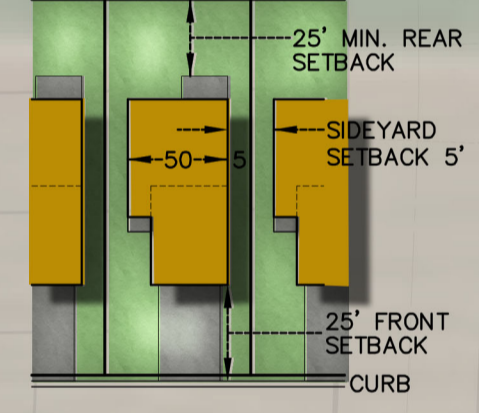
FRONT:	30 FT.
SIDE:	10 FT.
REAR:	30 FT.
CORNER:	30 FT.

40' & 50' DETACHED VILLAS

40' VILLAS



50' VILLAS



DETACHED VILLAS SETBACK DATA

FRONT:	GARAGE	25 FT.
SIDE:		5 FT.
REAR:		25 FT.
CORNER:		25 FT.

LEGAL DESCRIPTION

Outlot A and part of Outlot C, ALPHA DEVELOPMENT, Anoka County, Minnesota

NOTES

- 1) Subject property address - Southeast quadrant of Puma Street & Alpine Drive NW, Ramsey, MN 55303.

SITE DATA

TOTAL BOUNDARY AREA	±33.5 AC.
TOTAL NUMBER OF LOTS	96
80 FT. LOTS	35
50 FT DETACHED VILLAS	19
40 FT DETACHED VILLAS	42
NET DENSITY	3.38 LOTS/AC (EXCLUDES ROW AND WETLAND)

