

Ramsey Gateway Highway 10 Project

TAC Meeting #1

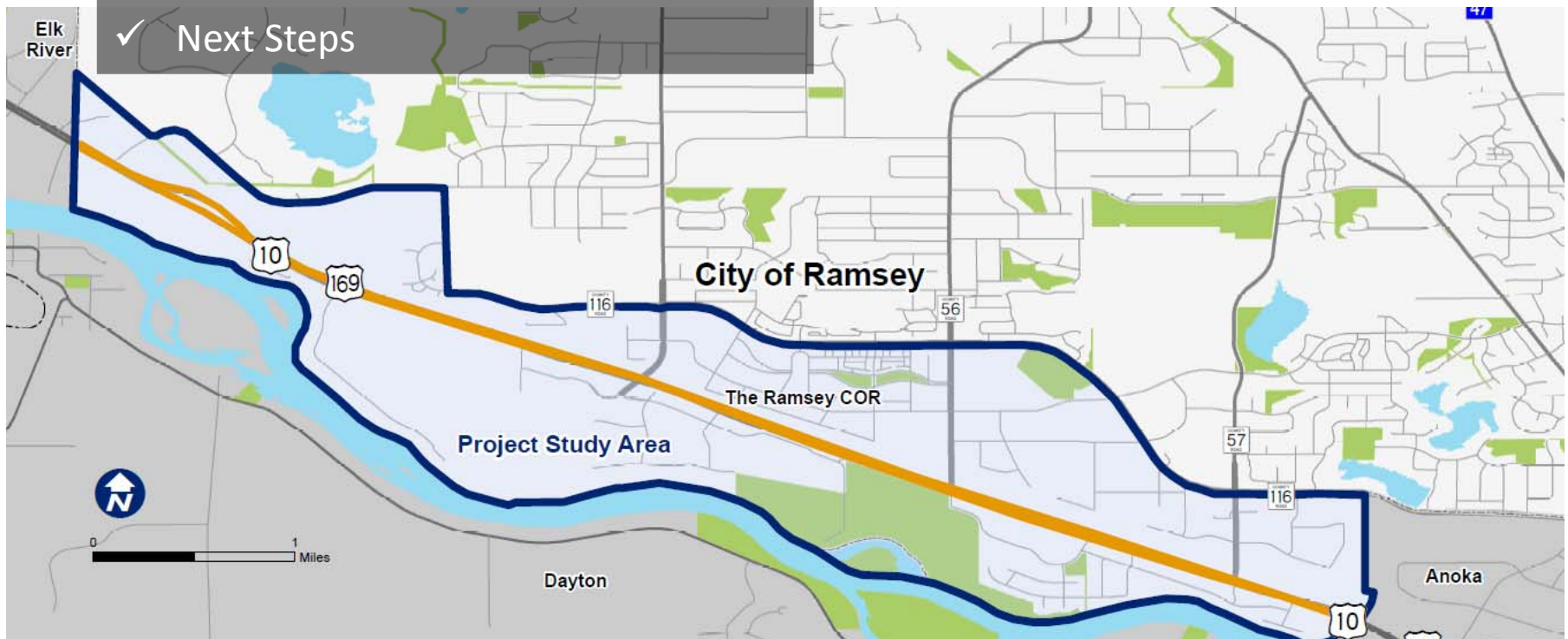
August 28, 2018

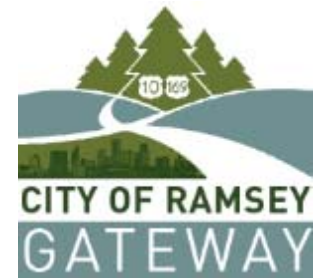


Meeting Outline



- ✓ Project Overview
- ✓ Public Involvement Plan
- ✓ Existing Conditions
- ✓ Future Conditions
- ✓ Summary of Issues
- ✓ Draft Goals and Objectives
- ✓ Next Steps





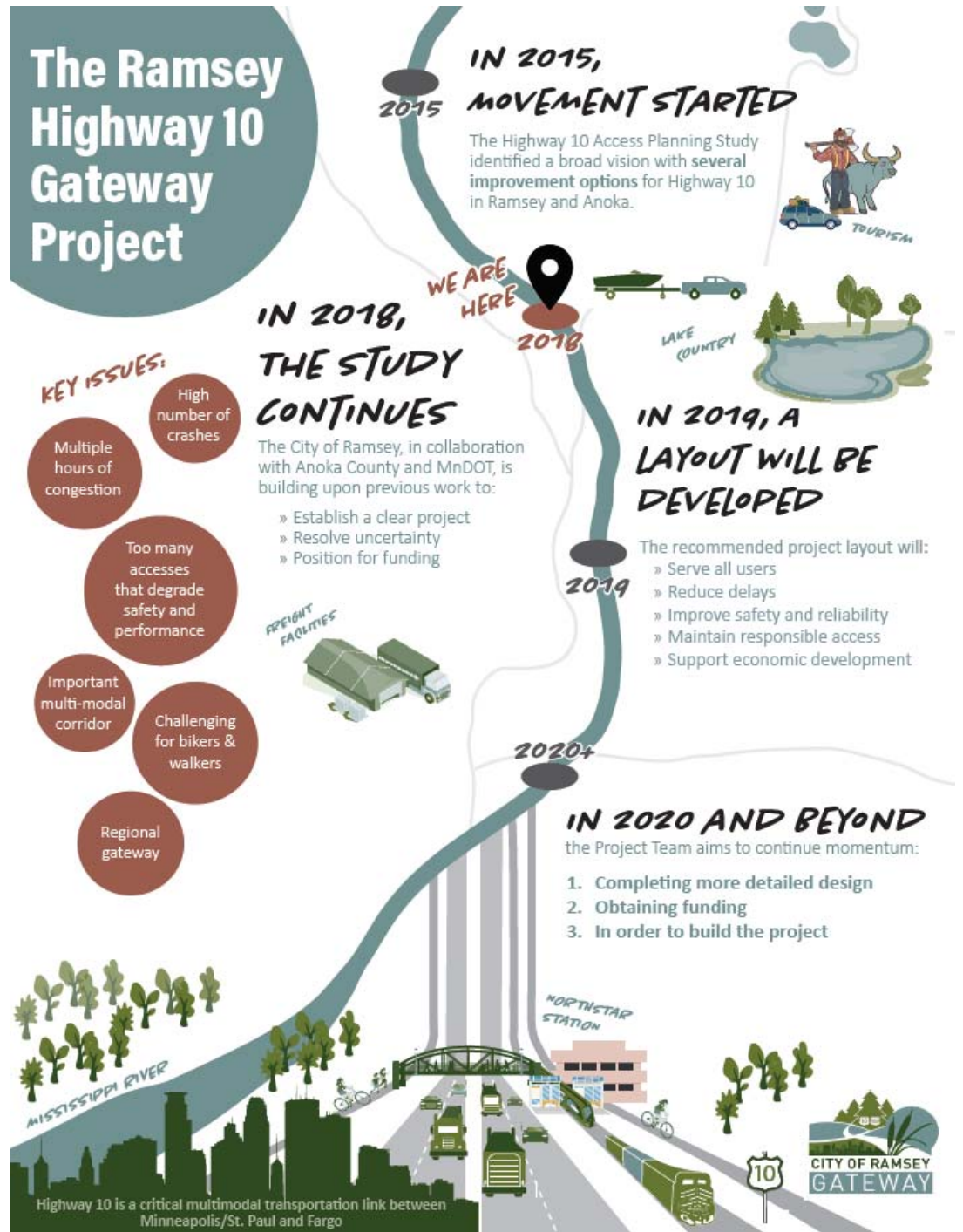
Project Overview



Project Overview

Study Goals

- Establish a clear single vision
- Resolve uncertainty
- Position for funding



Project Area & Upcoming Projects



By 2022 reconstruction of Highway 10/169 in Anoka and Elk River will start. Without improvements, congestion in Ramsey will worsen.

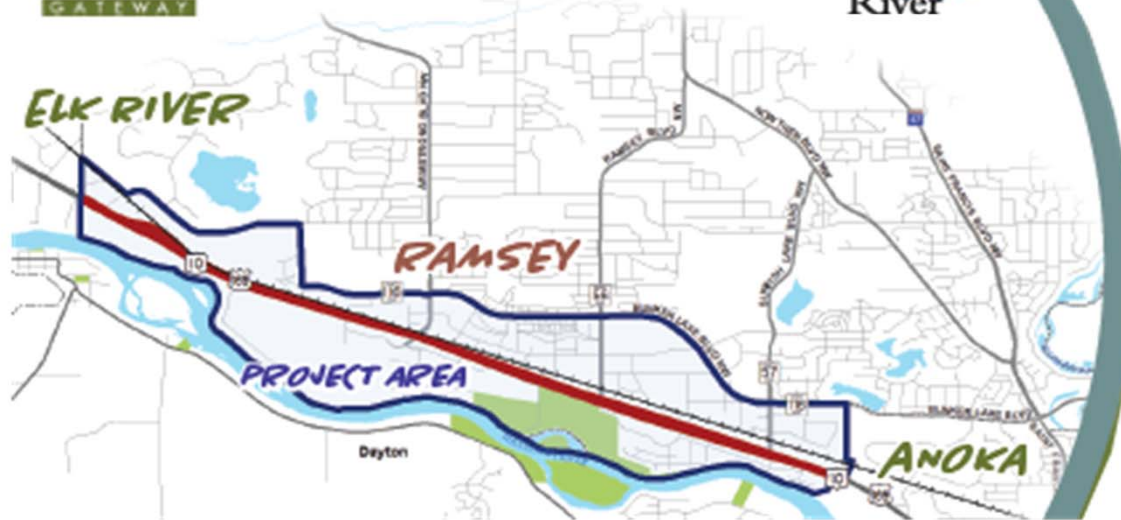


DEPARTMENT OF
TRANSPORTATION



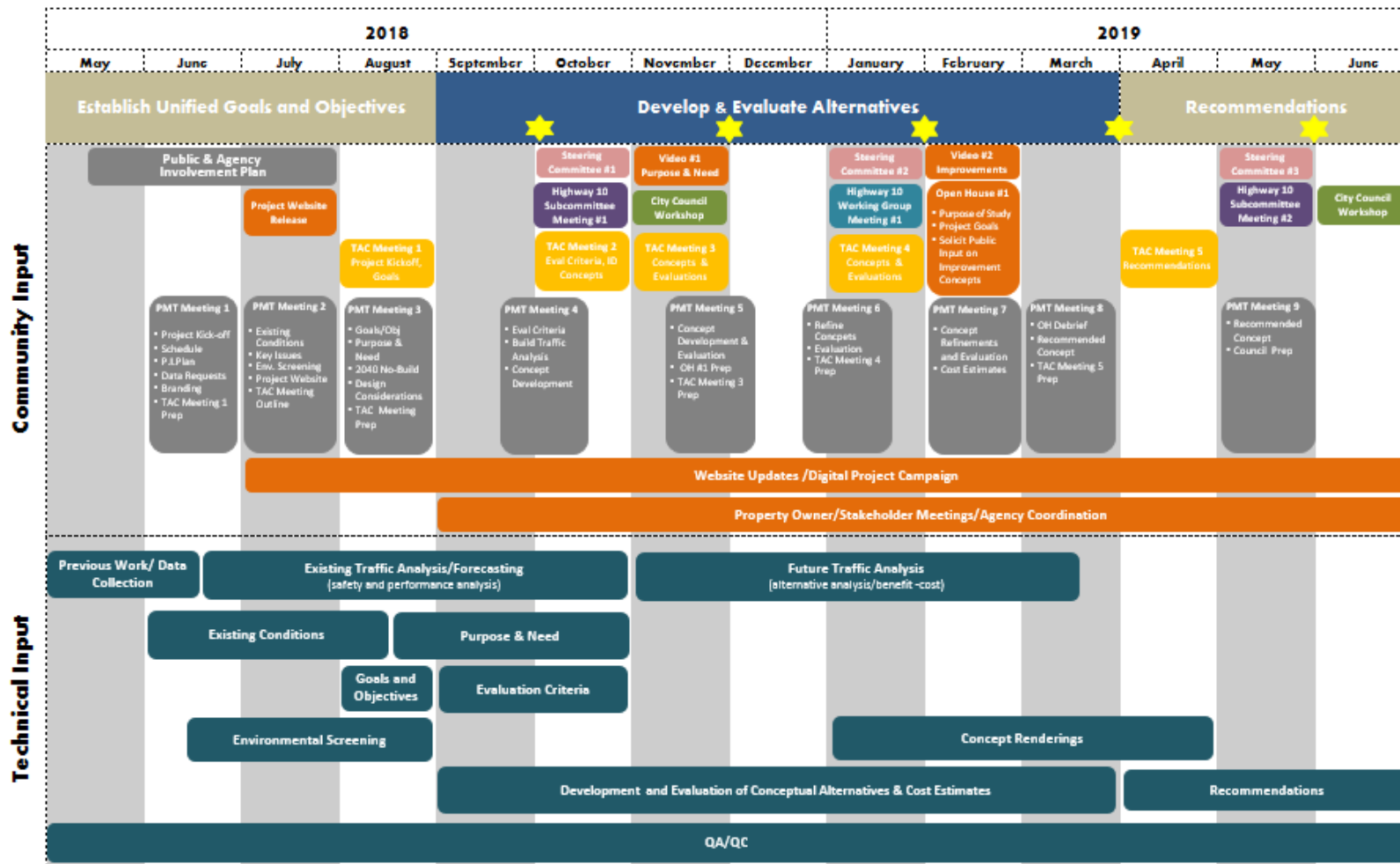
Anoka County
MINNESOTA

Respectful. Innovative. Fiscally Responsible.

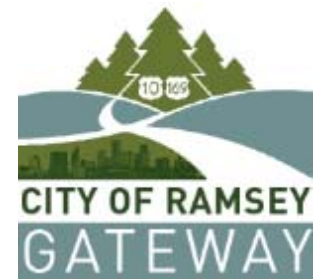




Scope & Schedule



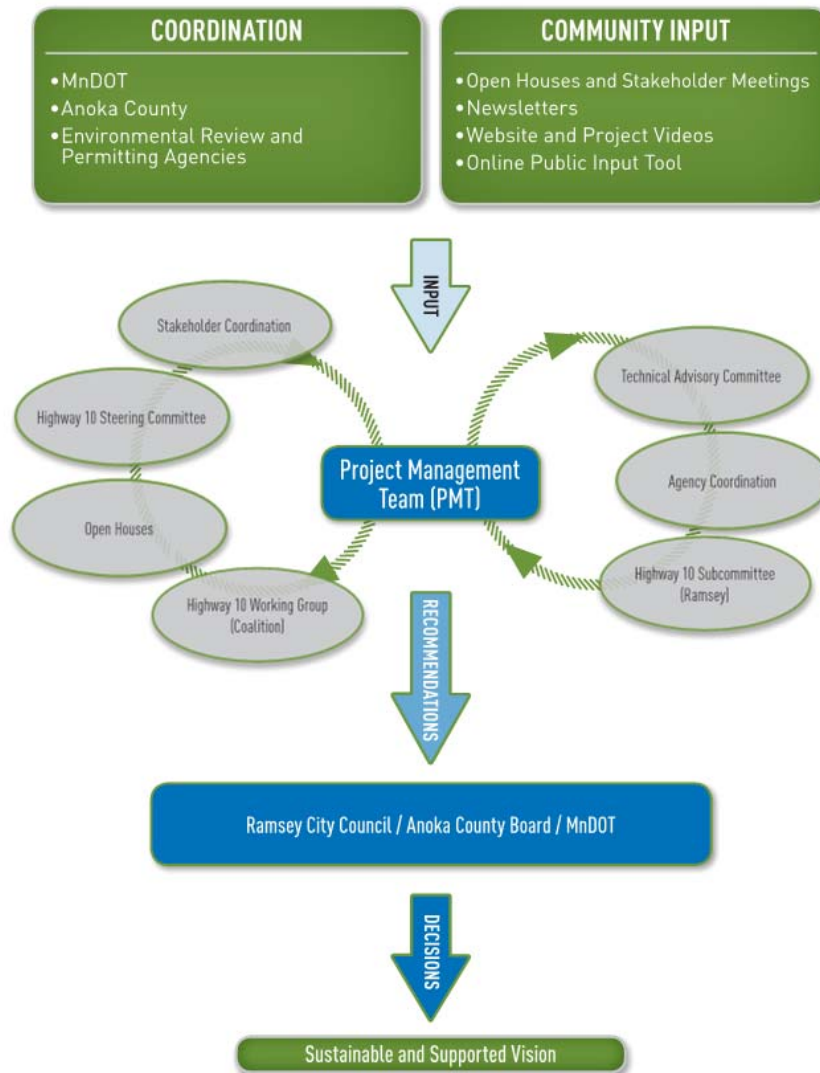
★ Ramsey Resident Newsletter Update



Public Involvement Plan



Public Involvement



Outreach Efforts

Project Website: ramseygateway.com

Infographics

The Ramsey Highway 10 Gateway Project

2015 **IN 2015, MOVEMENT STARTED**
 The Highway 10 Access Planning Study identified a broad vision with several improvement options for Highway 10 in Ramsey and Anoka.

2018 **IN 2018, THE STUDY CONTINUES**
 The City of Ramsey, in collaboration with Anoka County and MnDOT, is building upon previous work to:

- » Establish a clear project
- » Resolve uncertainty
- » Position for funding

2019 **IN 2019, A LAYOUT WILL BE DEVELOPED**
 The recommended project layout will:

- » Serve all users
- » Reduce delays
- » Improve safety and reliability
- » Maintain responsible access
- » Support economic development

2020+ **IN 2020 AND BEYOND**
 the Project Team aims to continue momentum:

1. Completing more detailed design
2. Obtaining funding
3. In order to build the project

KEY ISSUES:

- High number of crashes
- Multiple hours of congestion
- Too many accesses that degrade safety and performance
- Important multi-modal corridor
- Challenging for bikers & walkers
- Regional gateway

Highway 10 is a critical multimodal transportation link between Minneapolis/St. Paul and Fargo



Highway 10/169 THE GREATER MINNESOTA GATEWAY

WHAT IS THE RAMSEY GATEWAY PROJECT?
 The City of Ramsey, in partnership with Anoka County and MnDOT, has begun an effort to advance improvement plans for Highway 10. This will be a clear, single plan for improvements and an effort to be funded through various sources over time.

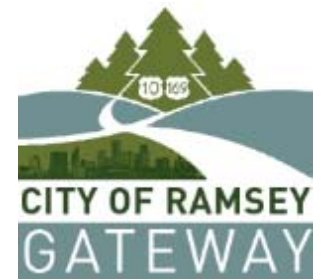
by 2022 reconstruction of Highway 10/169 in Anoka and Elk River will start. Without improvements, congestion in Ramsey will worsen.

Logos for: DEPARTMENT OF TRANSPORTATION ANOKA, Anoka County MINNESOTA, CITY OF RAMSEY, GREATER MN, Elk River

SIGN UP FOR EMAIL UPDATES!

Email Updates
 To sign up for project updates, please enter your contact information below.

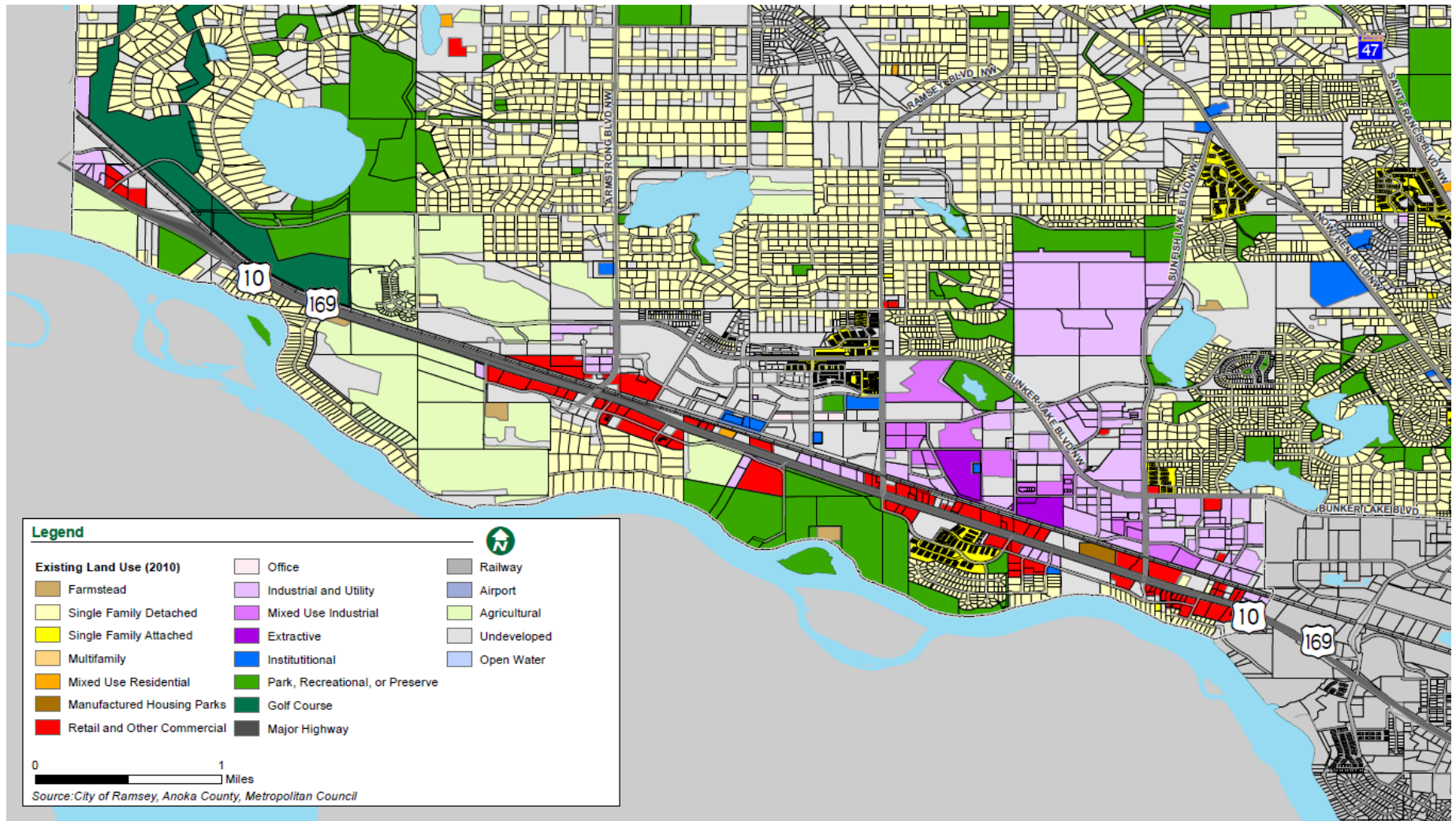
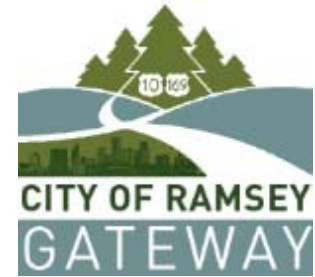
*Email Address



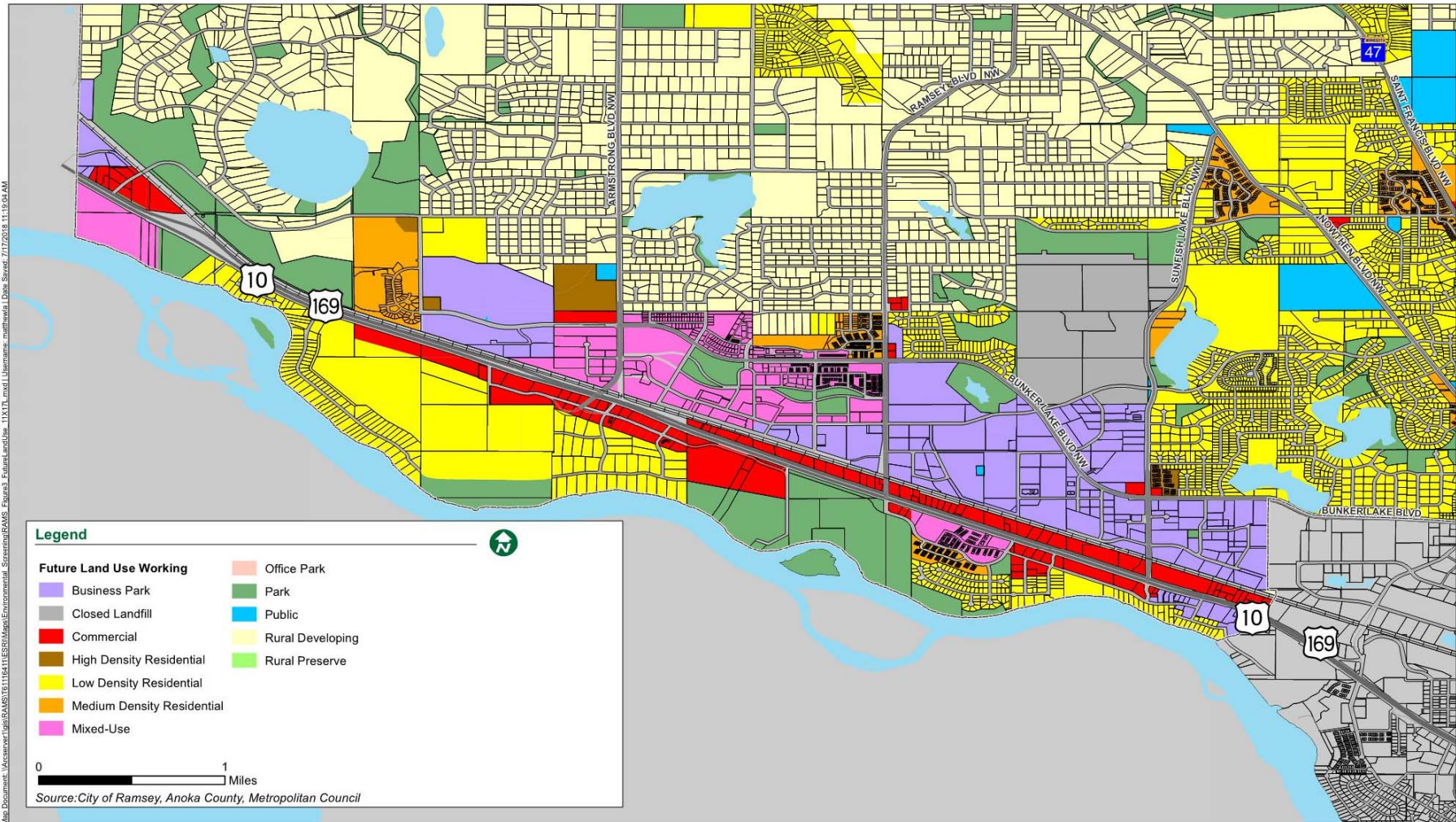
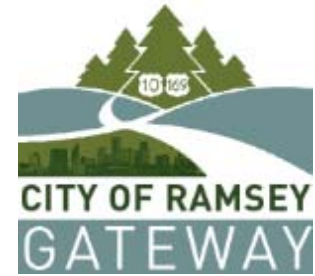
Existing Conditions



Existing Land Use



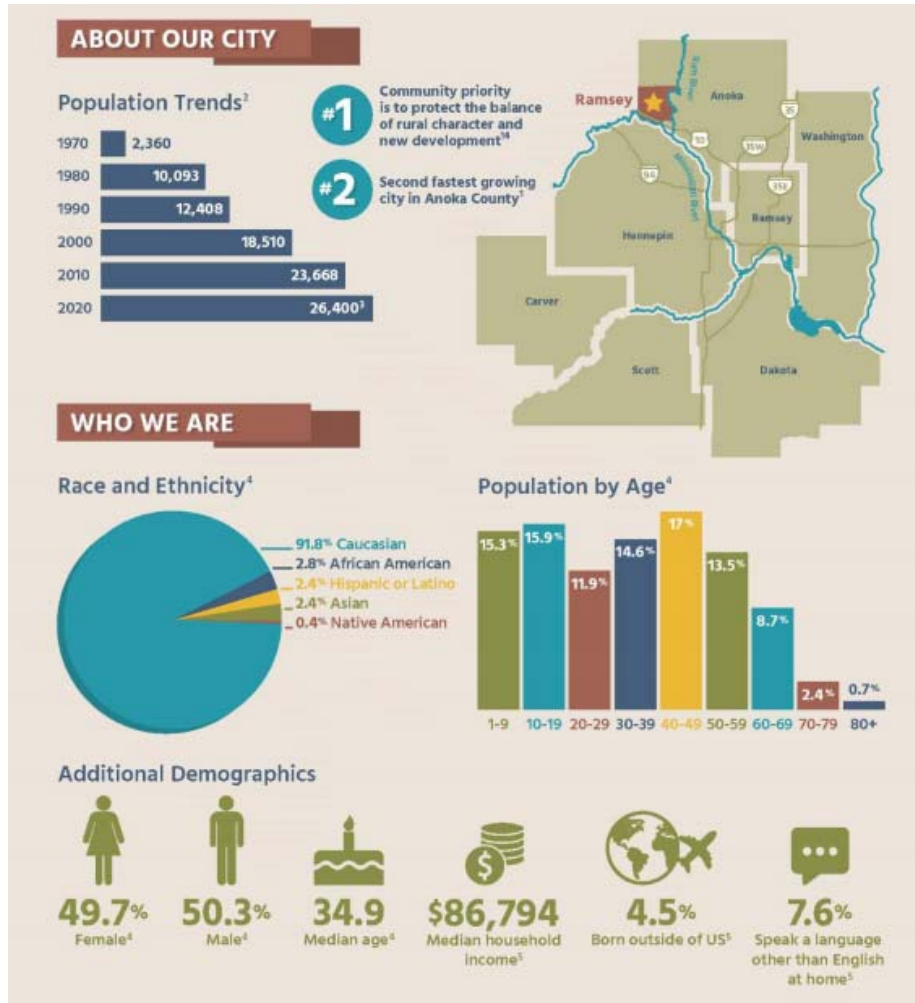
Future Land Use



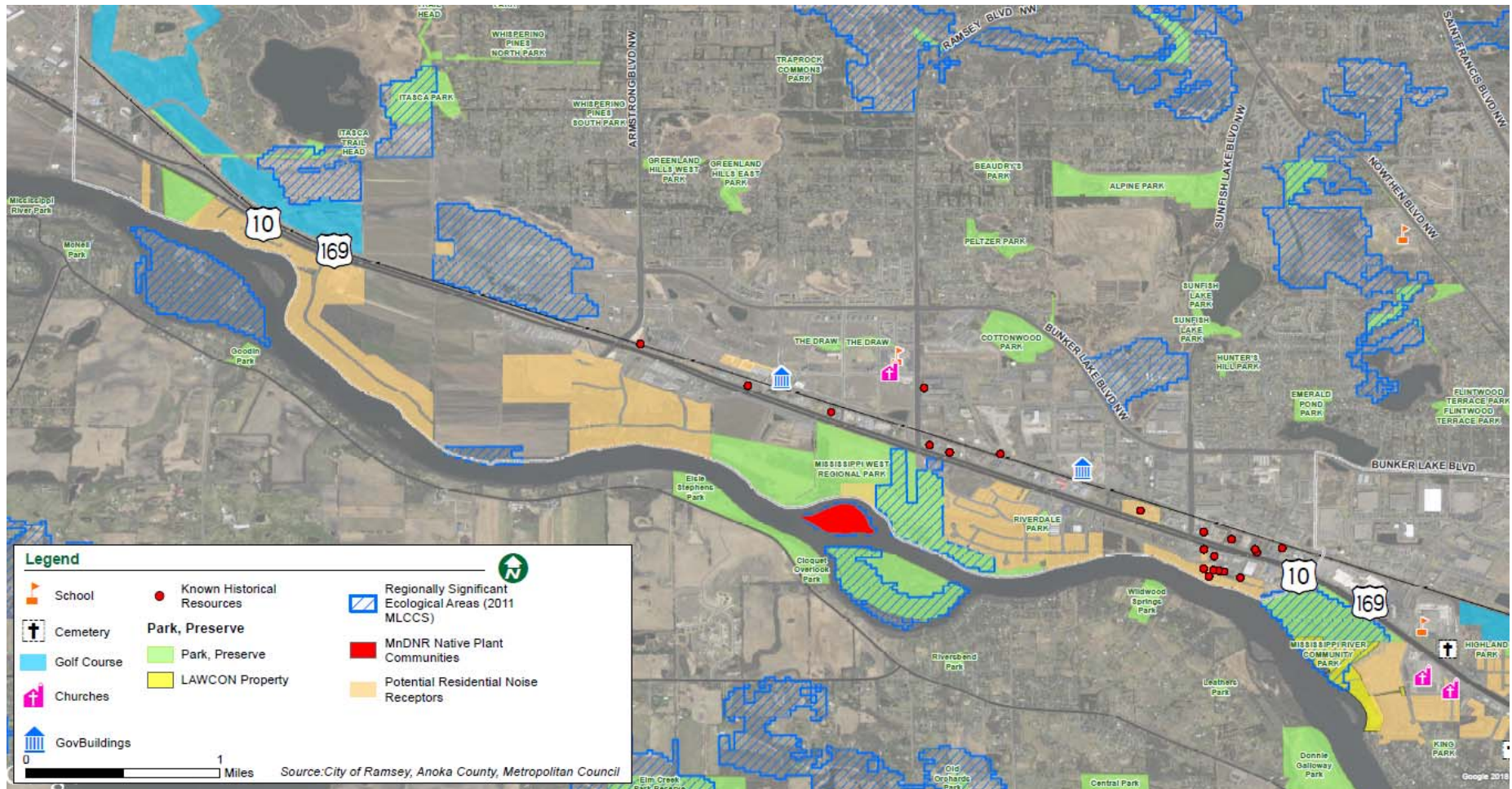
Map Document: \\mscserver\gis\RAMS\1116411\ESRI\Map\Environmental_Screening\RAMS_Figures_FutureLandUse_11X11.mxd | User: msc\mthetd | Date Saved: 7/17/2018 11:19:04 AM

Ramsey Demographics

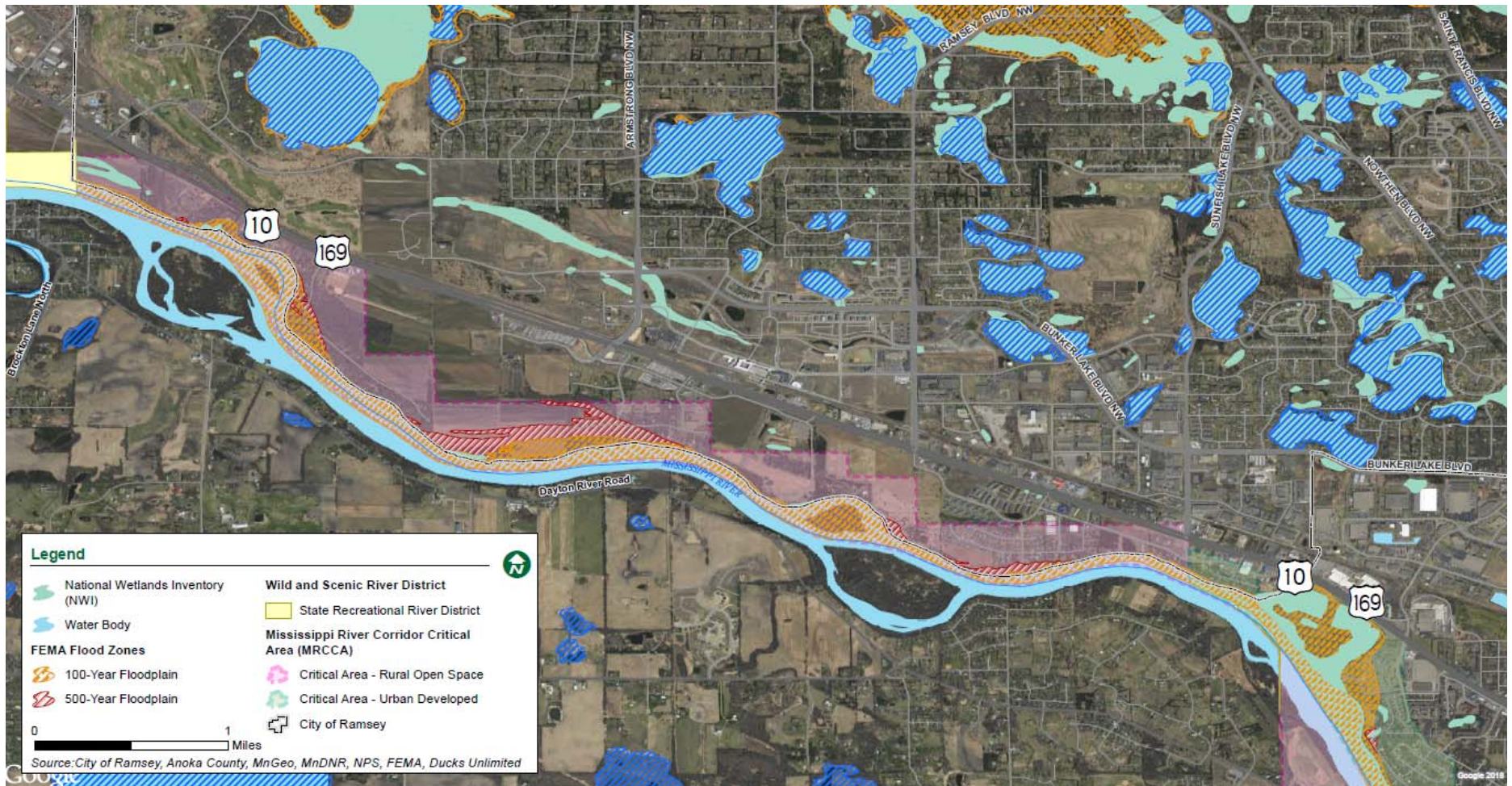
	2016	2020	2030	2040 Forecast	2040 Request
Population	26,251	27,550	33,350	34,700	39,150
Households	8,973	9,500	11,500	13,000	13,500
Employment	6,334	6,900	7,800	7,600	8,400



Environmental Resources



Environmental Resources



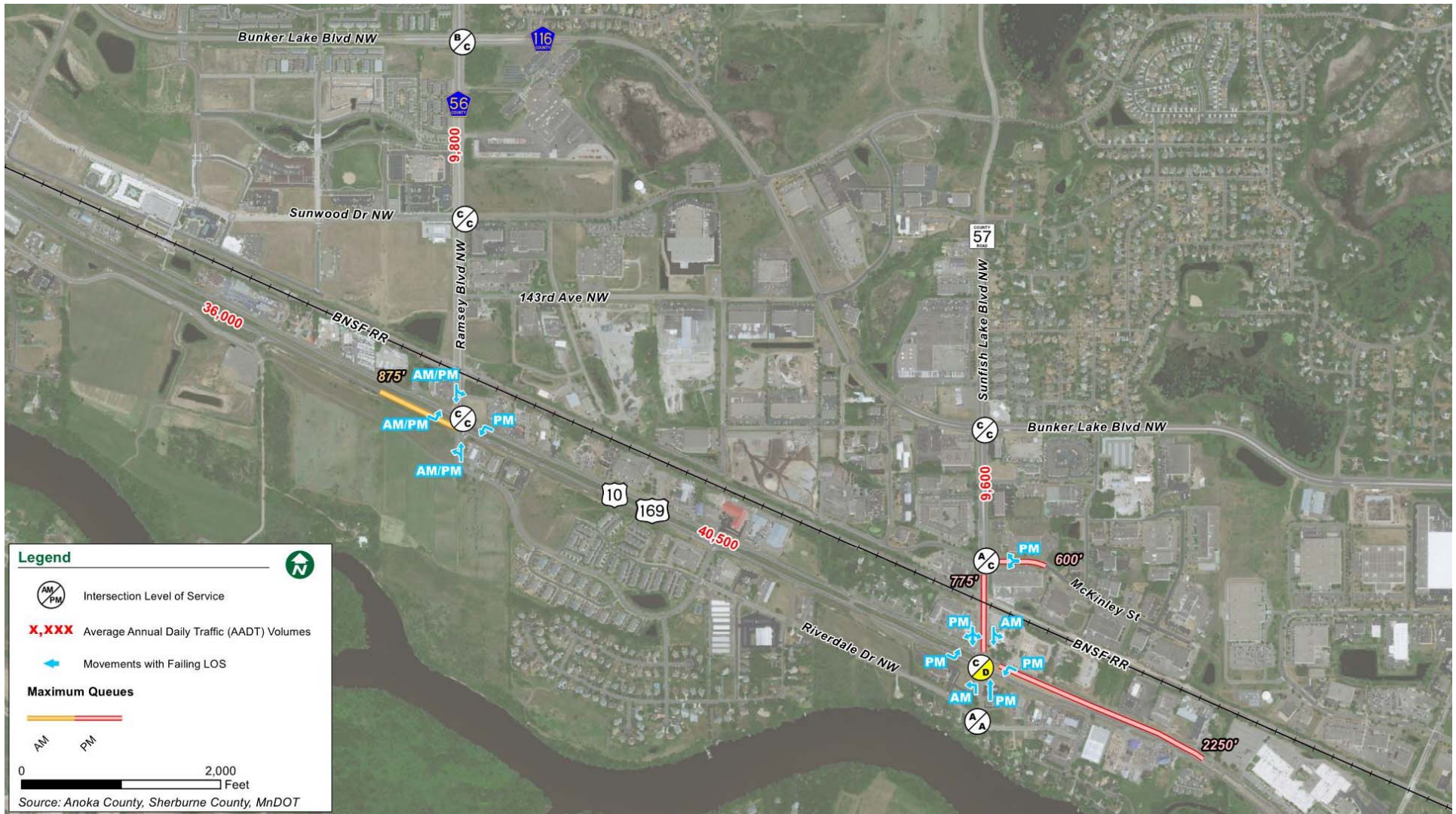
Bicycle/Pedestrian System



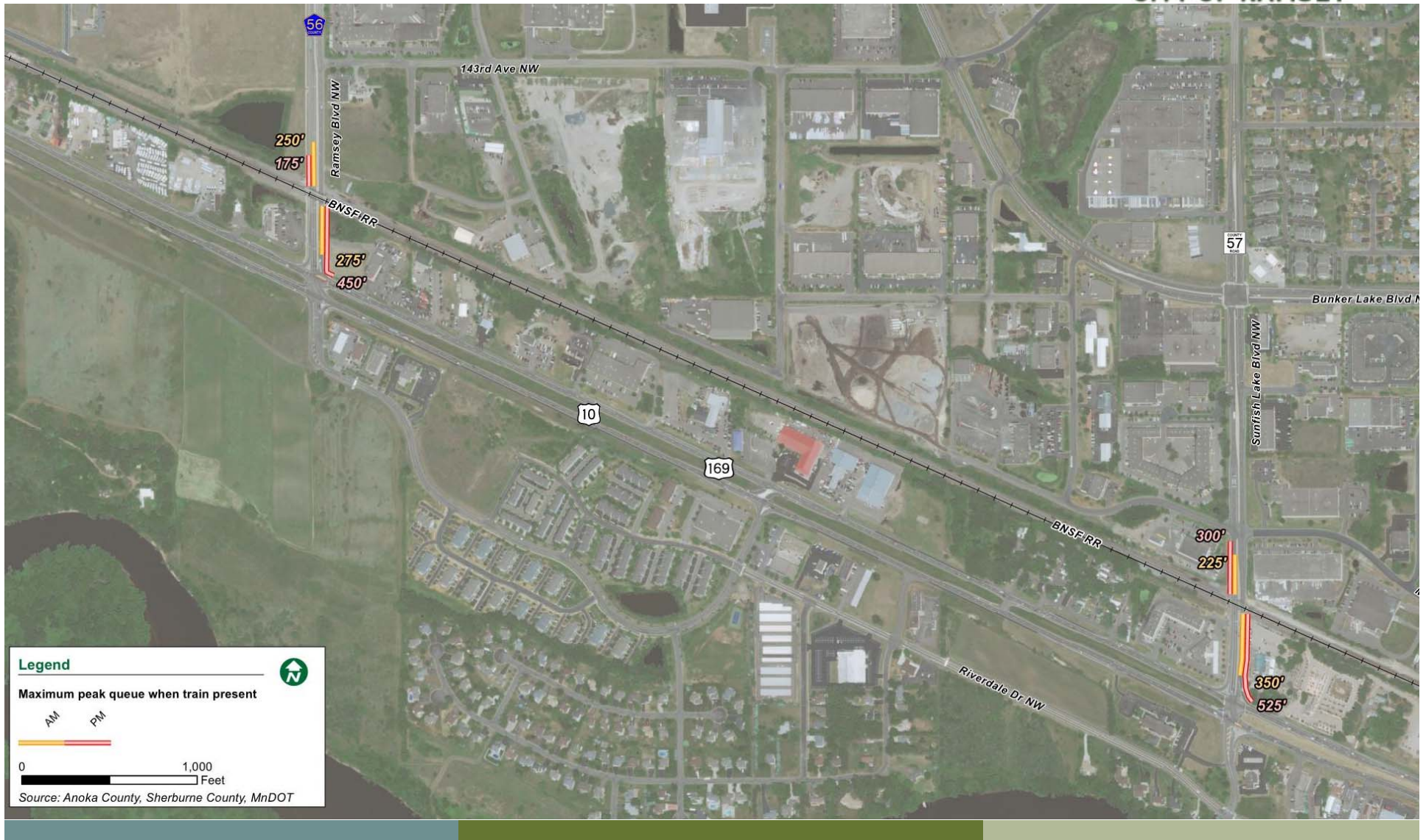
Existing Traffic Operations - West



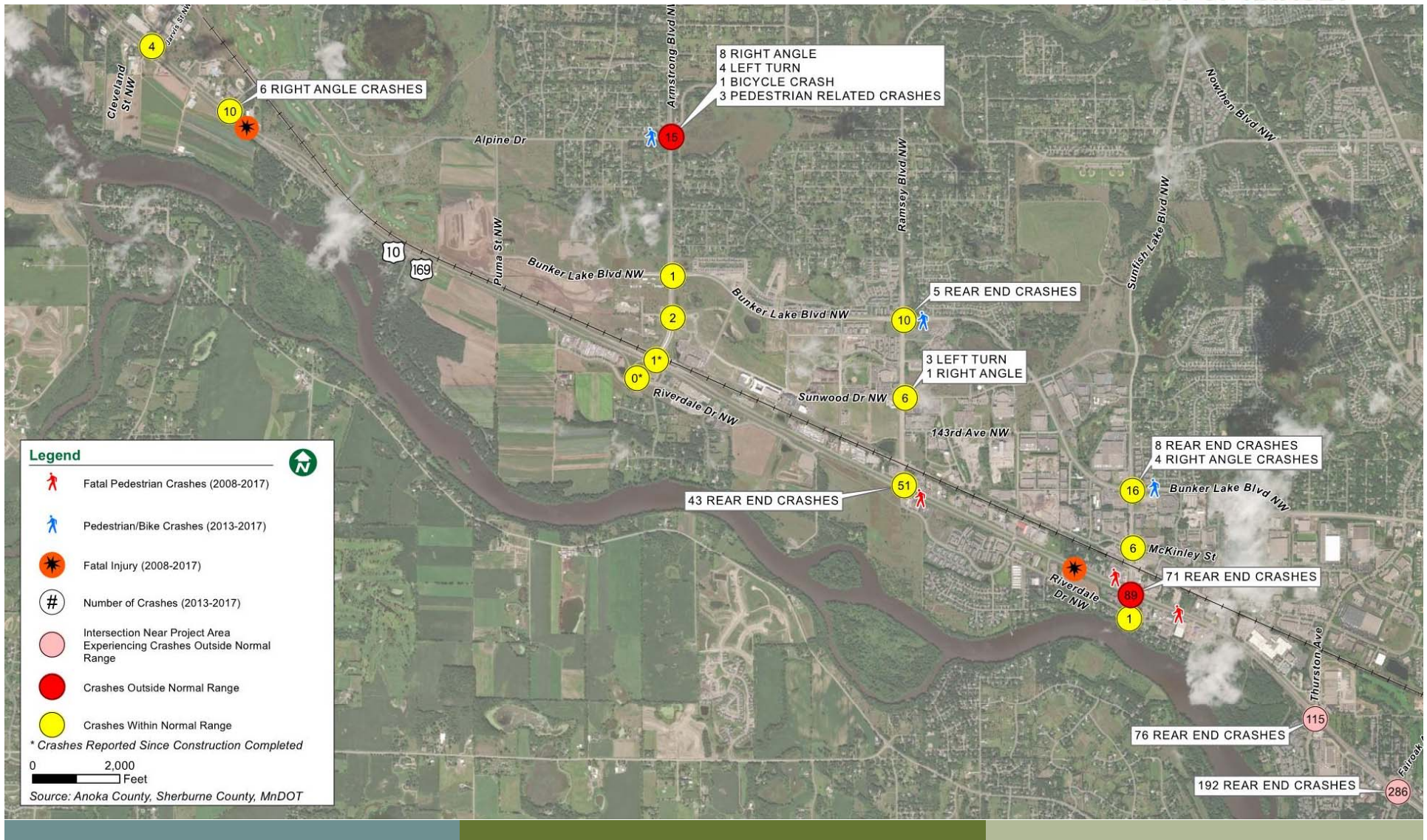
Existing Traffic Operations - East



Existing RR Xing Queues



Safety Analysis

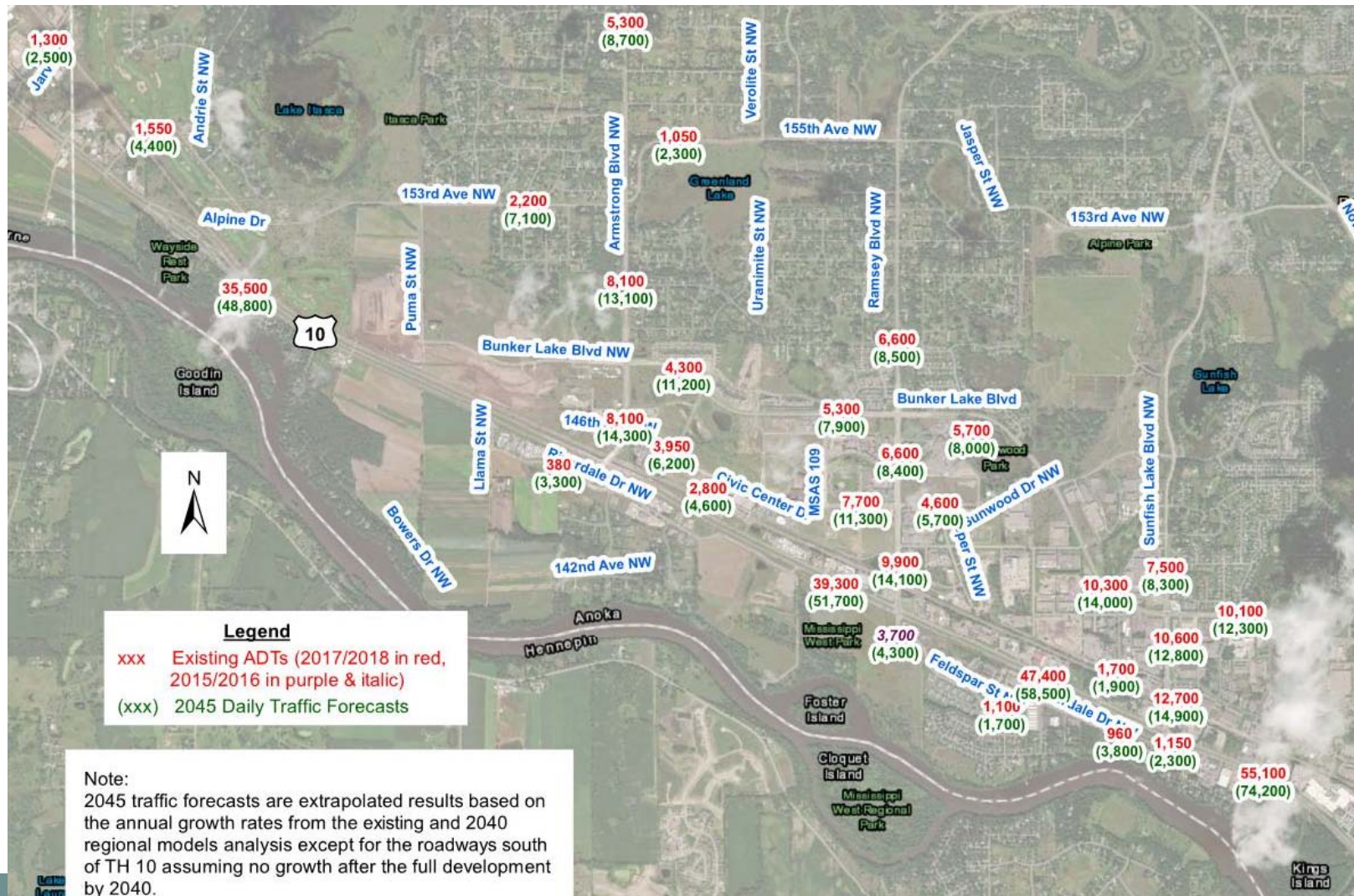




Future Conditions



2045 Traffic Forecasts



2025 No Build Traffic Operations - West



2025 No Build Traffic Operations - East



2025 No Build RR Xing Queues



2045 No Build Traffic Operations - West



2045 No Build Traffic Operations - East



2045 No Build RR Xing Queues





Summary of Issues





Route Importance

- **Principal Arterial/Gateway**
 - 35,500 to 55,000 vpd existing
 - 49,000 to 74,000 vpd forecast
 - 48-53% AM/PM through trips

- **Underserved Mobility**
 - TH 10 intersections with Ramsey Blvd and Sunfish Lake Blvd are failing today
 - NB railroad queues extend onto TH 10
 - By 2045, intersection and mainline delays are significant throughout





By 2022 reconstruction of Highway 10/169 in Anoka and Elk River will start. Without improvements, congestion in Ramsey will worsen.



DEPARTMENT OF TRANSPORTATION



ANOKA
REAL GLASS



Anoka County
MINNESOTA
Respectful. Innovative. Fiscally Responsible.



City of
RAMSEY



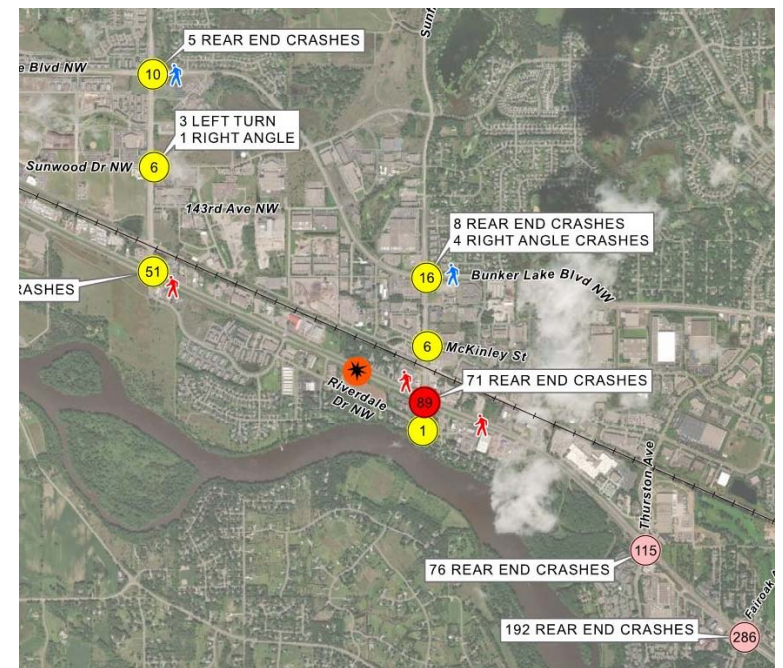
City of
Elk River



Sunfish Lake Blvd will be the first traffic signal encountered for westbound traffic after the Anoka Project is complete in 2023.

Safety

- Numerous access points
 - 73 access points
- High number of crashes
 - 90 crashes per year
 - 60% rear end
 - Sunfish Lake Blvd CI=1.41
 - 5 fatal crashes in 10 yrs





Multimodal

- Hwy 10 serves vehicular, freight, transit and trains
 - 58 freight trains/day (79 mph)
 - 2.6 miles average train length
 - 12 Northstar trains
 - 2 Amtrak trains
 - Gate arms down approx. 2-3 hours/day

- Challenging corridor for pedestrians and bicyclists



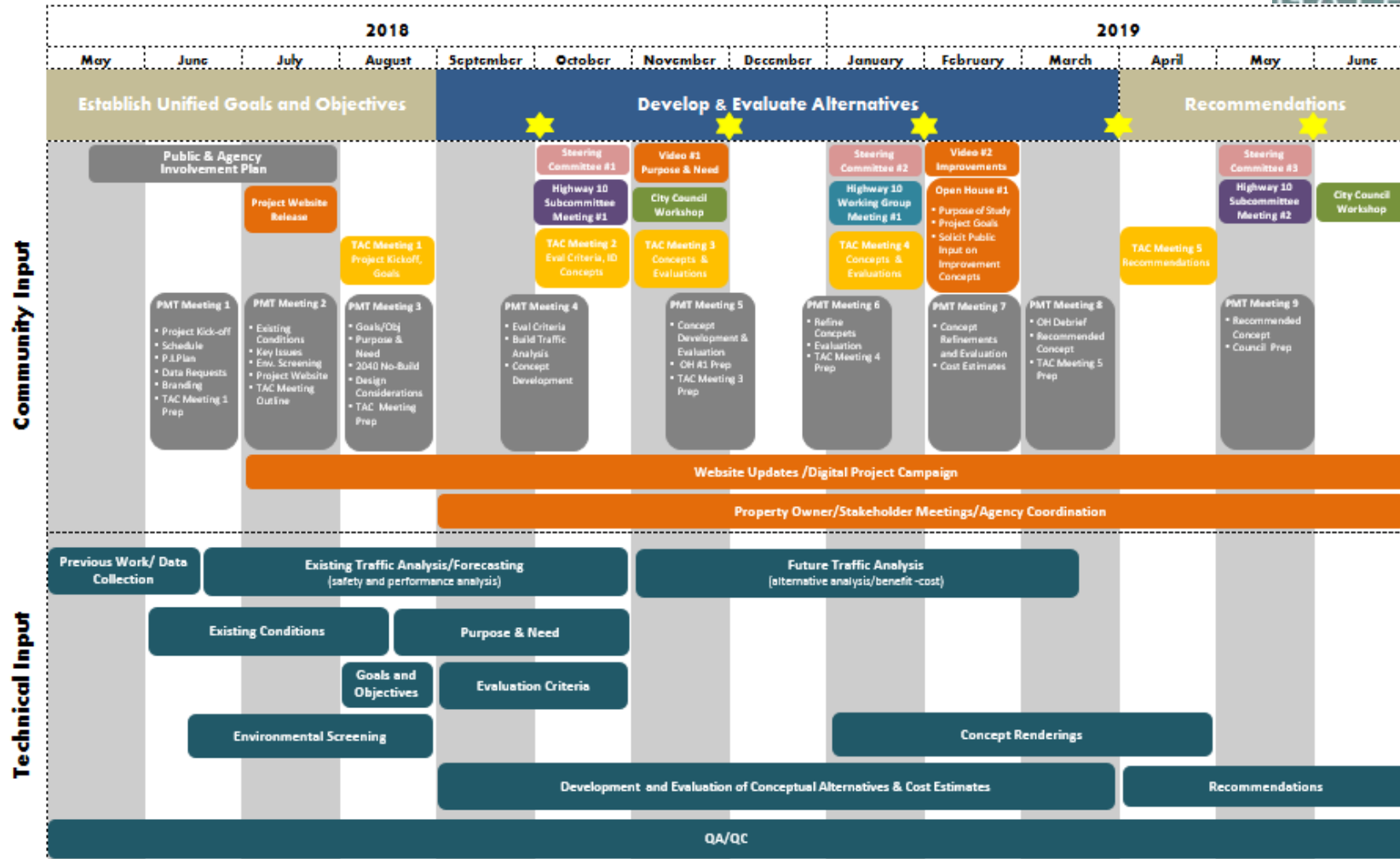
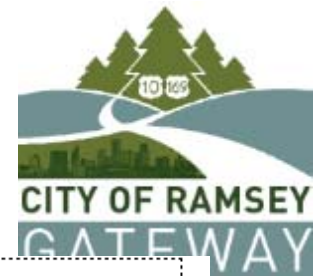
Goals and Objectives



- Safely accommodate all users
- Provide efficient vehicle & freight mobility & access
- Develop financially responsible implementation plan
- Support plans to build a connected & recognizable business corridor
- Provide infrastructure improvements compatible with environment



What's Next?



★ Ramsey Resident Newsletter Update