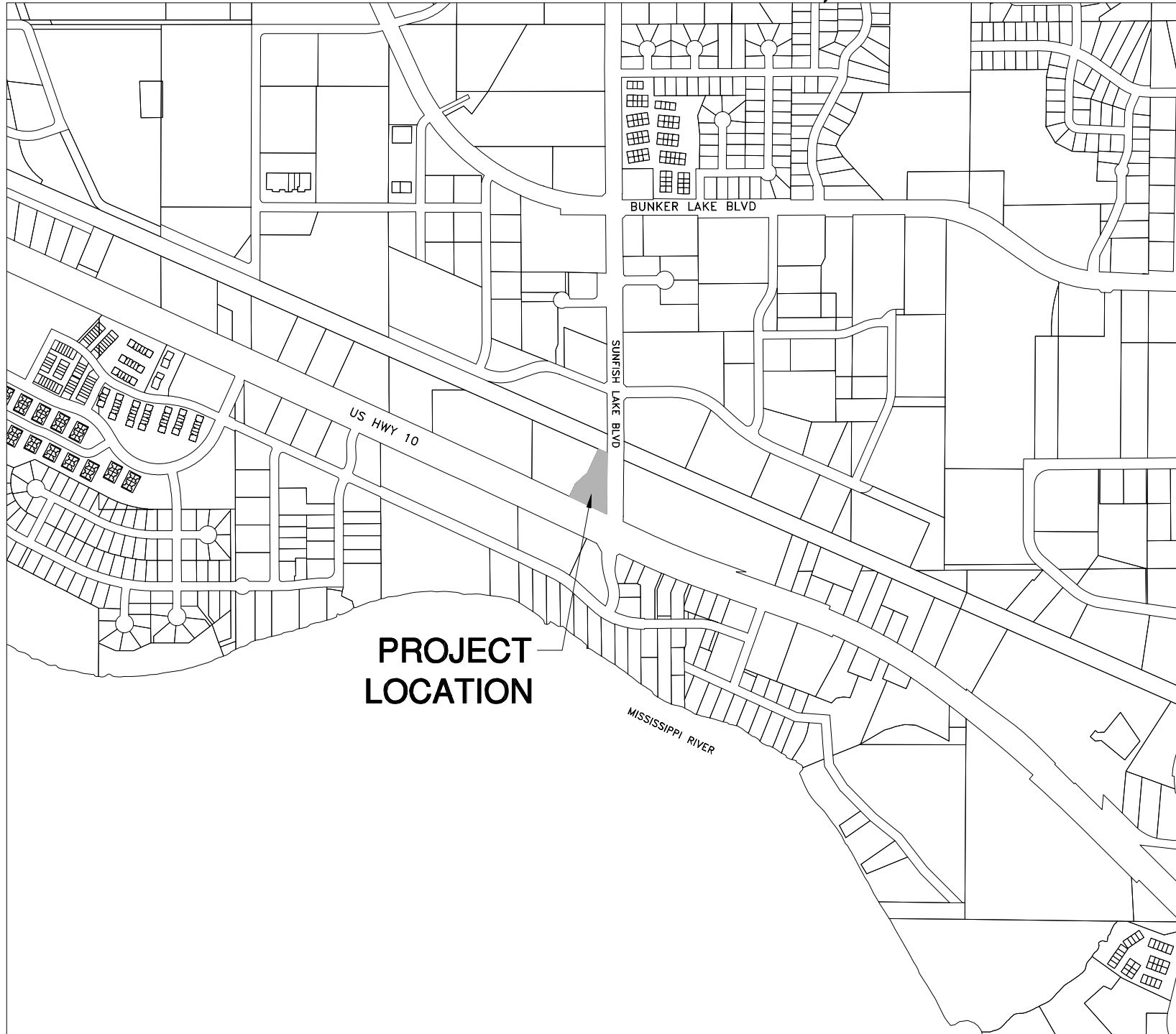


SUNFISH LAKE GAS STATION PARKING LOT PLANS FOR GRADING, PAVING, CURB AND GUTTER, AND OTHER SITE IMPROVEMENTS

CITY OF RAMSEY, MINNESOTA



**PROJECT
LOCATION**

CITY OF RAMSEY,
ANOKA COUNTY,
MINNESOTA

THE SUBSURFACE UTILITY INFORMATION IN THIS PLAN IS UTILITY QUALITY LEVEL D. THIS QUALITY LEVEL WAS DETERMINED ACCORDING TO THE GUIDELINES OF CI/ASCE 38-2, ENTITLED "STANDARD GUIDELINES FOR THE COLLECTION AND DEPICTION OF EXISTING SUBSURFACE UTILITY DATA."

GOVERNING SPECIFICATIONS

ALL FEDERAL, STATE AND LOCAL LAWS, REGULATIONS, AND ORDINANCES SHALL BE COMPLIED WITH IN THE CONSTRUCTION OF THIS PROJECT.

ALL TRAFFIC CONTROL DEVICES AND SIGNING SHALL CONFORM TO THE LATEST EDITION OF THE MINNESOTA MANUAL ON UNIFORM TRAFFIC CONTROL DEVICES, INCLUDING THE LATEST FIELD MANUAL FOR TEMPORARY TRAFFIC CONTROL ZONE LAYOUTS.

ALL REQUIREMENTS OF THE PROJECT MANUAL FOR THE SUNFISH LAKE GAS STATION PARKING LOT, THE 2016 EDITION OF THE MINNESOTA DEPARTMENT OF TRANSPORTATION "STANDARD SPECIFICATIONS FOR CONSTRUCTION" SHALL GOVERN.

SHEET INDEX

THIS PLAN CONTAINS 7 SHEETS

SHEET NO.	DESCRIPTION
1	TITLE
2	ESTIMATED QUANTITIES AND DETAILS
3	DETAILS
4	EXISTING CONDITIONS & REMOVALS
5	RESTORATION PLAN
6	GRADING AND EROSION CONTROL
7	TRAFFIC CONTROL PLAN

I hereby certify that this plan, specification, or report was prepared by me or under my direct supervision and that I am a duly Licensed Professional Engineer under the laws of the State of Minnesota.

SHANE NELSON, P.E.
 HAKANSON ANDERSON
 DESIGN ENGINEER

43381 DATE 3/1/18
 LIC. NO.

DATE	REVISION
3/14/18	PER CITY COMMENTS
4/20/18	PER CITY COMMENTS
7/11/18	PER CITY COMMENTS
8/23/18	ISSUED FOR CONSTRUCTION

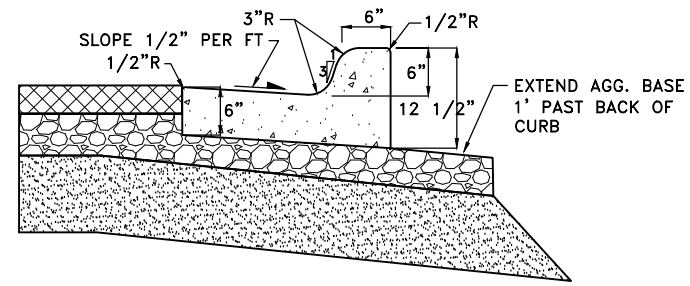
SHEET 1 OF 7 SHEETS



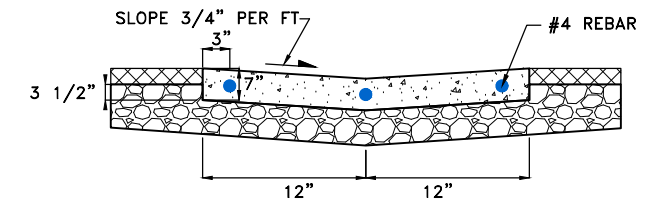
STATEMENT OF ESTIMATED QUANTITIES

ITEM NO.	Mn/DOT SPEC. NO.	ITEM DESCRIPTION	ESTIMATED QUANTITY	UNIT
1	2021	MOBILIZATION	1	LUMP SUM
2	2104	SAWING BITUMINOUS PAVEMENT (FULL DEPTH)	782	LIN FT
3	2104	REMOVE CONCRETE CURB AND GUTTER	61	LIN FT
4	2104	REMOVE BITUMINOUS PAVEMENT	770	SQ YD
5	2105	COMMON EXCAVATION (P)	125	CY
6	2112	SUBGRADE PREPARATION	1	LUMP SUM
7	2232	MILL BITUMINOUS SURFACE, 1.5"	175	SQ YD
8	2360	TYPE SP 9.5 WEARING COURSE MIXTURE (2.B)	281	TON
9	2360	TYPE SP 12.5 NON WEARING COURSE MIXTURE (2.B)	374	TON
10	2357	BITUMINOUS MATERIAL FOR TACK COAT	155	GAL
11	2461	CONCRETE VALLEY GUTTER - 7" THICK	17	SQ YD
12	2501	CONNECT TO EXISTING STORM SEWER	2	EACH
13	2501	12" PVC STORM SEWER PIPE, SCH 40	70	LIN FT
14	2506	STORM SEWER CATCH BASIN	2	EACH
15	2506	ADJUST FRAME AND RING CASTING	1	EACH
16	2511	LANDSCAPE ROCK	50	CU YD
17	2511	GEOTEXTILE FABRIC	445	SQ YD
18	2531	CONCRETE CURB AND GUTTER, TYPE B612	408	LIN FT
19	2563	TRAFFIC CONTROL	1	LUMP SUM
20	2573	STORM DRAIN INLET PROTECTION	6	EACH
21	2574	SELECT TOPSOIL	5	CY
22	2575	TURF ESTABLISHMENT	1	LUMP SUM
23	2582	4" SOLID LINE EPOXY (WHITE)	2,800	LIN FT

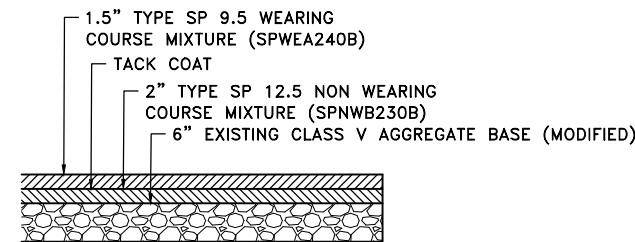
NOTE:
 1 ADJUST FRAME AND RING CASTING ITEM IS FOR ADJUSTING EXISTING CASTING ONLY. FURNISHING AND ADJUSTING OF THE FRAME AND RING CASTING ON NEW STRUCTURES IS INCIDENTAL TO THE STORM SEWER CATCH BASIN ITEM.
 2 SAWCUTTING CONCRETE CURB AND GUTTER IS INCIDENTAL.



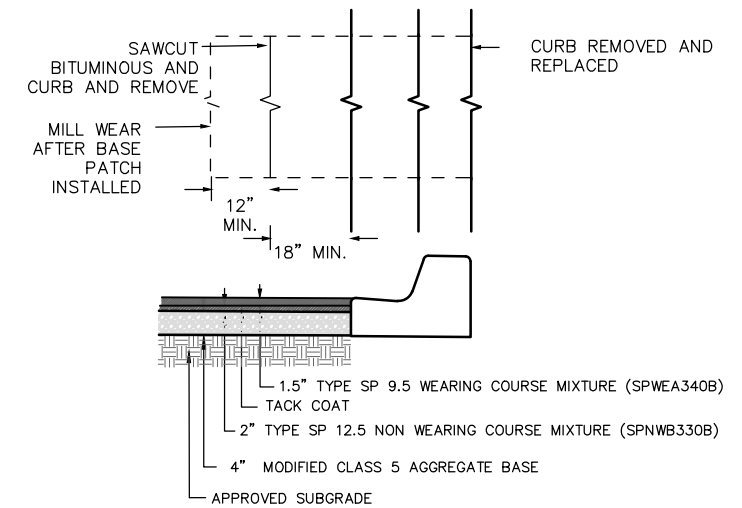
1
2 TYPICAL B612 CURB SECTION
NO SCALE



4
2 CONCRETE VALLEY GUTTER
NO SCALE



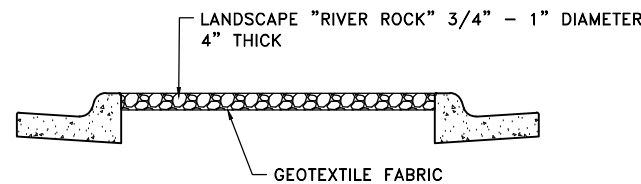
2
2 TYPICAL PAVEMENT SECTION
NO SCALE



NOTES:
 1. BITUMINOUS SHALL BE SAWCUT AND REMOVED AFTER CURB IS REPLACED.
 2. CLASS 5 AND BITUMINOUS COURSES SHALL BE MECHANICALLY COMPACTED.
 3. SEE CITY PLATE STR-26 FOR MODIFIED CLASS 5 SPECIFICATIONS.

5
2 CITY PLATE STR-25 STREET PATCHING STANDARDS
NO SCALE

NOTE: DISREGARD BITUMINOUS MIXTURE IN ABOVE DETAIL FOR THIS PROJECT.



3
2 LANDSCAPING DETAIL
NO SCALE

Aug 23, 2018 - 2:44pm K:\MUNICIPAL\RA955\ENGINEERING\Restoration Plan\RA955_DETAILS.dwg

DATE	REVISION
3/14/18	PER CITY COMMENTS
4/20/18	PER CITY COMMENTS
7/11/18	PER CITY COMMENTS
8/23/18	UPDATE STATEMENT OF ESTIMATED QUANTITIES

I hereby certify that this plan, specification, or report was prepared by me or under my direct supervision and that I am a duly Licensed Professional Engineer under the laws of the State of Minnesota.
 SHANE M. NELSON, P.E.
 Date 3/1/18 Lic. No. 43381

DESIGNED BY: AV
 DRAWN BY: AV
 CHECKED BY: SMN



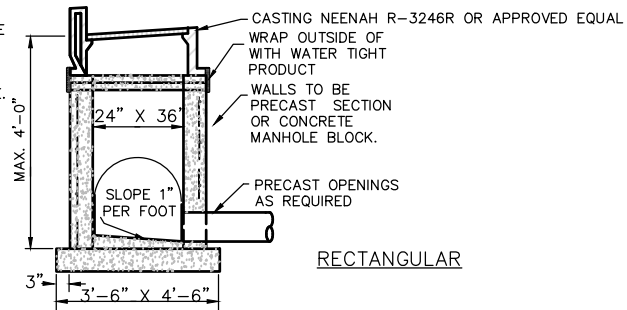
Hakanson Anderson
 Civil Engineers and Land Surveyors
 3601 Thurston Ave., Anoka, Minnesota 55303
 763-427-5860 FAX 763-427-0520
 www.hakanson-anderson.com

SUNFISH LAKE GAS STATION RESTORATION

ESTIMATED QUANTITIES AND DETAILS
 CITY OF RAMSEY, MN

SHEET 2 OF 7 SHEETS
 RA955

A 5 FT. GREEN CARSONITE MARKER SHALL BE INSTALLED NEXT TO ALL STRUCTURES NOT IN A PAVED OR HARD SURFACE.



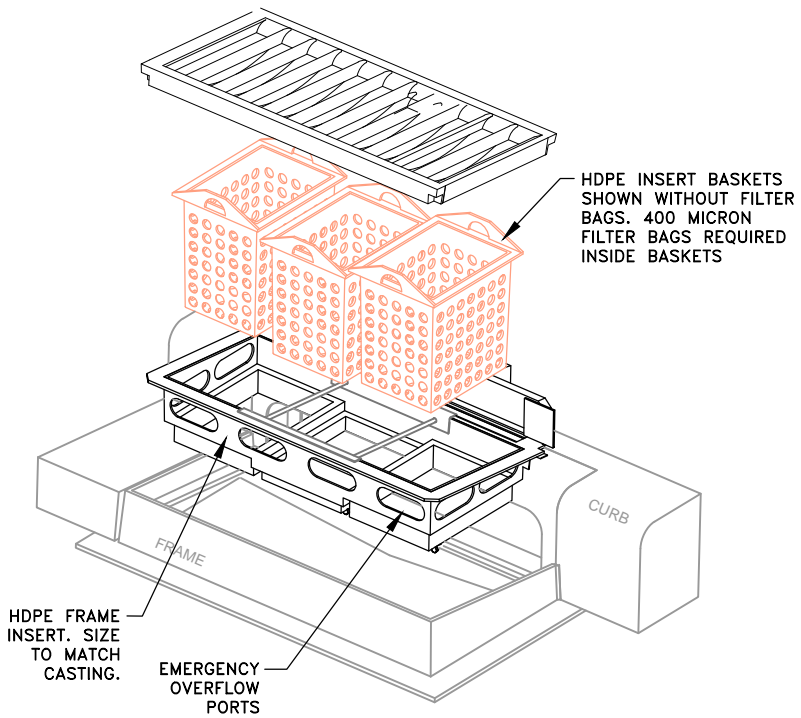
RECTANGULAR

NOTES:

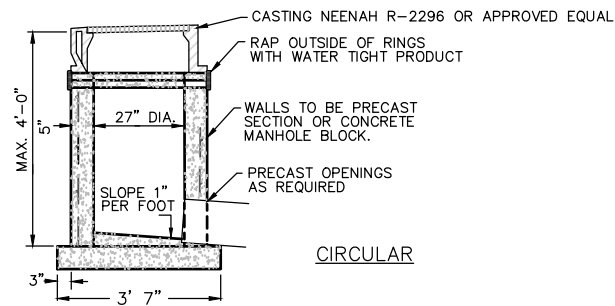
1. MANHOLE INVERT SHALL SLOPED TO PROVIDE A SMOOTH FLOW FROM INLET TO OUTLET
2. CONCRETE BASE SHALL BE 6" POURED IN PLACE OR 5" PRECAST SLAB.
3. CONCRETE ADJUSTING RINGS TO BE INSTALLED MAX. 7-2" RINGS, MIN 2-2" RINGS
4. GROUT BETWEEN RINGS, SHIMS SHALL BE METAL, CONCRETE OR PLASTIC
5. INSPECTION OF MANHOLE REQUIRED BEFORE BACKFILLING
6. A 10 GAUGE SOLID COPPER TRACER WIRE IS REQUIRED WITH ALL STORM LINES.
7. CONDUCTIVITY IS REQUIRED ON ALL TRACER WIRE
8. STEPS ARE REQUIRED IF STRUCTURE FROM THE CASTING TO THE INVERT IS GREATER THAN 4 FEET
9. TRACER WIRES ARE TO END IN STRUCTURES, AT FINISHED GRADE ON ALL SERVICES AND STUBS

NOTE: DISREGARD TRACER WIRE NOTES IF NONE IS BURIED ALONG THE PIPES

1
3
2X3 CATCH BASIN
NO SCALE



3
3
INLET PROTECTION
NO SCALE



CIRCULAR

SHALLOW STORM SEWER MANHOLE OR CATCH BASIN

NOTES:

1. MANHOLE INVERT SHALL BE SLOPED TO PROVIDE A SMOOTH FLOW FROM INLET TO OUTLET.
2. CONCRETE BASE SHALL BE 6" POURED IN PLACE OR 5" PRECAST SLAB.
3. CONCRETE ADJUSTING RINGS TO BE INSTALLED MAX 7-2" RINGS, MIN 2-2" RINGS.
4. GROUT BETWEEN RINGS
5. SHIMS USED FOR LEVELING SHALL BE METAL OR CONCRETE.
6. A 10 GAGE SOLID COPPER TRACER WIRE IS REQUIRED WITH ALL SEWER LINES.
7. CONDUCTIVITY IS REQUIRED ON ALL TRACER WIRE
8. TRACER WIRED ARE TO END IN STRUCTURES, AT FINIHED GRADE ON ALL SERVICES AND STUBS.

NOTE: DISREGARD TRACER WIRE NOTES IF NONE IS BURIED ALONG THE PIPES

2
3
27" CIRCULAR AREA INLET
NO SCALE

Jul 13, 2018 - 2:33pm K:\MUNICIPAL\RA955\ENGINEERING\Restoration Plan\RA955_DETAILS.dwg

DATE	REVISION
3/14/18	PER CITY COMMENTS
4/20/18	PER CITY COMMENTS

I hereby certify that this plan, specification, or report was prepared by me or under my direct supervision and that I am a duly Licensed Professional Engineer under the laws of the State of Minnesota.

Shane Nelson
SHANE M. NELSON, P.E.
Date 3/1/18 Lic. No. 43381

DESIGNED BY: AV
DRAWN BY: AV
CHECKED BY: SMN

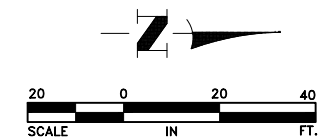


Hakanson Anderson
Civil Engineers and Land Surveyors
3601 Thurston Ave., Anoka, Minnesota 55303
763-427-5860 FAX 763-427-0520
www.hakanson-anderson.com

SUNFISH LAKE GAS STATION
RESTORATION

DETAILS
CITY OF RAMSEY, MN

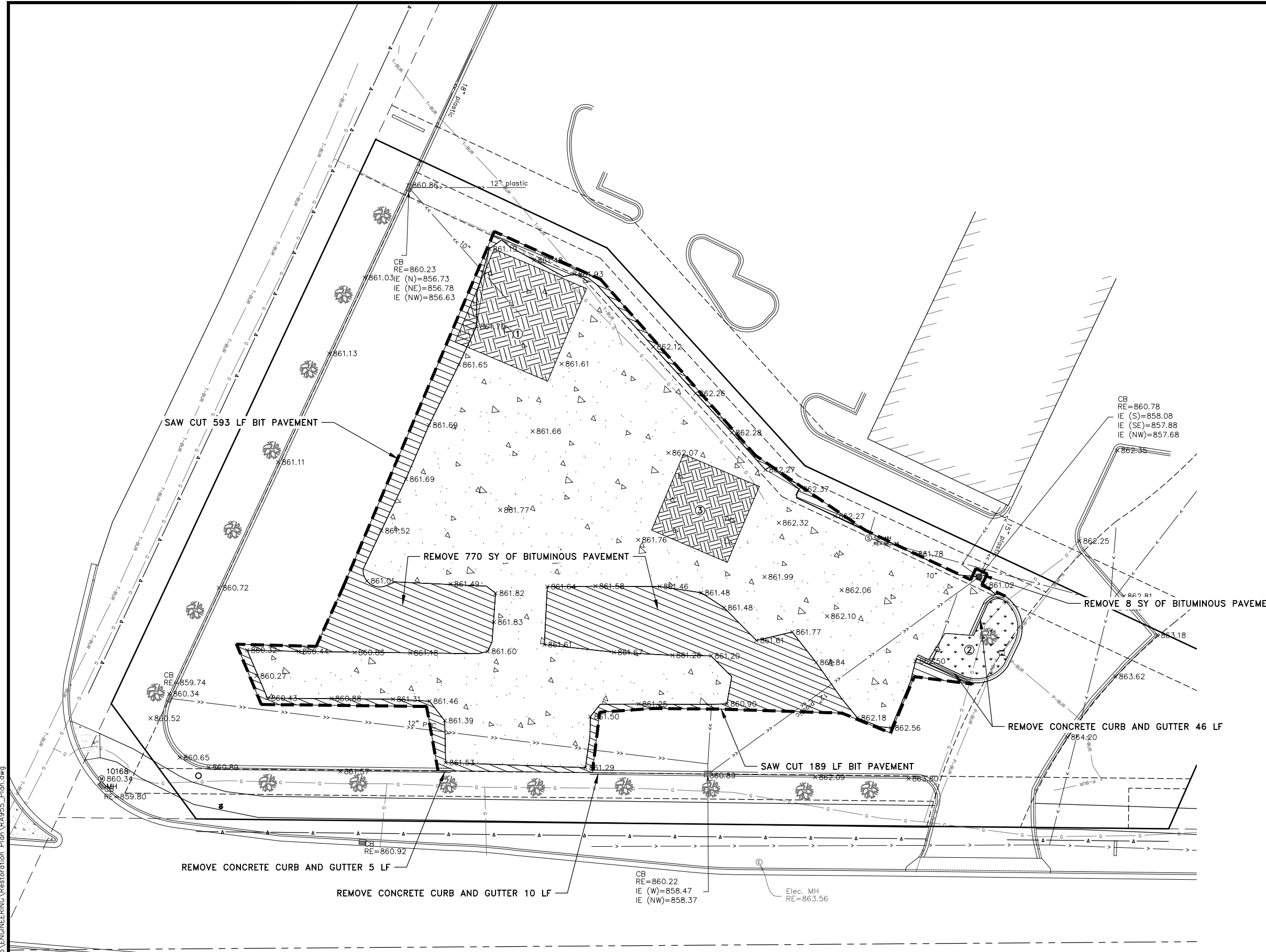
SHEET 3
OF 7
SHEETS



LEGEND

- - - 856 - - - EXISTING CONTOUR
- 856 ——— PROPOSED CONTOUR
- - - - - EXISTING SANITARY SEWER
- - - - - EXISTING WATERMAIN
- - - - - EXISTING STORM SEWER
- - - - - EXISTING GAS
- - - - - EXISTING TELEPHONE
- - - - - EXISTING UNDERGROUND ELECTRIC
- - - - - PROPOSED STORM SEWER
- - - - - LIMITED ACCESS
- ==== PROPOSED PAVEMENT STRIPING
- ==== CONCRETE CURB AND GUTTER
- ==== SAWCUT BITUMINOUS PAVEMENT
- ==== FULL DEPTH & MILL PAVEMENT PER $\frac{5}{2}$
- x 860.00 EXISTING ELEVATION
- [Hatched Box] REMOVE BITUMINOUS PAVEMENT
- [Cross-hatched Box] STRIP GRAVEL, EXCAVATE SUBGRADE TO PLAN ELEVATION, PLACE GRAVEL
- [Dotted Box] REMOVE TURF TO 4" DEPTH TO PREPARE FOR LANDSCAPE ROCK
- [Triangle Box] EXISTING AGGREGATE BASE

- NOTES:**
1. SAW CUT EXISTING PAVEMENT FULL DEPTH AND REMOVE AS DEPICTED TO PROVIDE A CLEAN VERTICAL FACE.
 2. SAW CUTTING OF CONCRETE CURB AND GUTTER IS INCIDENTAL TO THE REMOVAL.
- REFERENCE NOTES:**
- ① SALVAGE AGGREGATE BASE TO STOCKPILE, SUBCUT SUBGRADE TO PLAN ELEVATIONS TO ALLOW FOR SECTION, PLACE SALVAGED AGGREGATE BASE. THIS WORK SHALL BE PAID AS 70 CY COMMON EXCAVATION.
 - ② REMOVE EXISTING TURF TO 4" DEPTH TO PREPARE FOR LANDSCAPE ROCK. HAND WORK REQUIRED AROUND TREE. THIS WORK SHALL BE PAID AS 15 CY COMMON EXCAVATION.
 - ③ SALVAGE AGGREGATE BASE TO STOCKPILE, SUBCUT SUBGRADE TO PLAN ELEVATIONS TO ALLOW FOR SECTION, PLACE SALVAGED AGGREGATE BASE. THIS WORK SHALL BE PAID AS 40 CY COMMON EXCAVATION.



Jul 13, 2018 - 2:34pm K:\MUNICIPAL\RA955\ENGINEERING\Restoration_Plan\RA955_Plan.dwg

DATE	REVISION
4/20/18	PER CITY COMMENTS

I hereby certify that this plan, specification, or report was prepared by me or under my direct supervision and that I am a duly Licensed Professional Engineer under the laws of the State of Minnesota.

Shane Nelson
 SHANE M. NELSON, P.E.
 Date 3/1/18 Lic. No. 43381

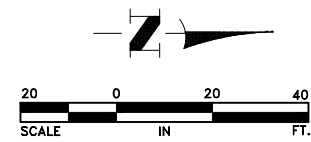
DESIGNED BY: AV
DRAWN BY: AV
CHECKED BY: SMN



Hakanson Anderson
 Civil Engineers and Land Surveyors
 3601 Thurston Ave., Anoka, Minnesota 55303
 763-427-5860 FAX 763-427-0520
 www.hakanson-anderson.com

SUNFISH LAKE GAS STATION RESTORATION

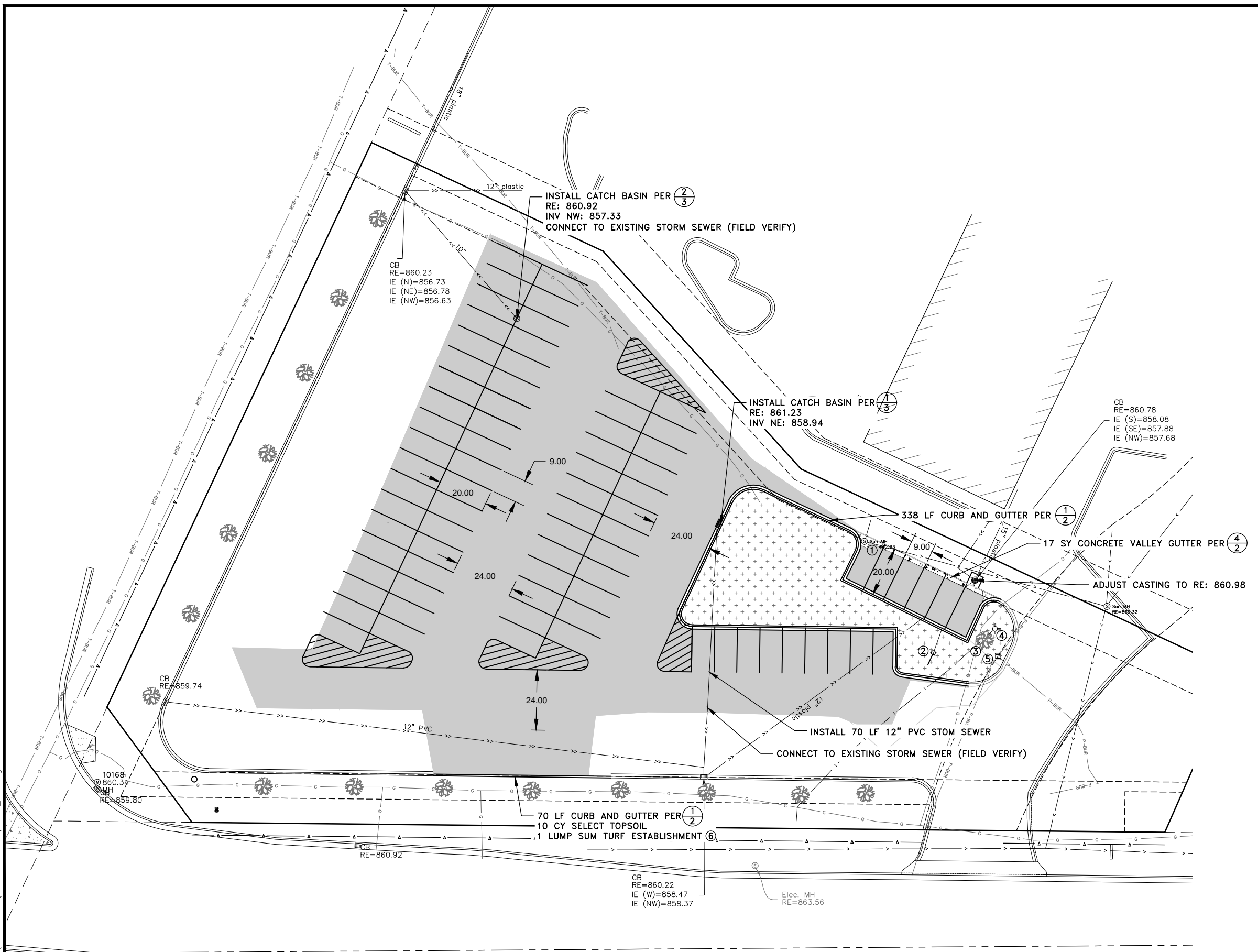
EXISTING CONDITIONS & REMOVALS
 CITY OF RAMSEY, MN



LEGEND

--- 856 ---	EXISTING CONTOUR
— 856 —	PROPOSED CONTOUR
— > > —	EXISTING SANITARY SEWER
— —	EXISTING WATERMAIN
— >> >> —	EXISTING STORM SEWER
— G — G —	EXISTING GAS
— T-BUR — T-BUR —	EXISTING TELEPHONE
— P-BUR — P-BUR —	EXISTING UNDERGROUND ELECTRIC
— >> >> —	PROPOSED STORM SEWER
— Δ — Δ —	LIMITED ACCESS
— — —	PROPOSED PAVEMENT STRIPING
— — —	CONCRETE CURB AND GUTTER
— — —	NEW CONCRETE CURB AND GUTTER
■	NEW BITUMINOUS PAVEMENT
+	LANDSCAPE ROCK PER ③/②

- GENERAL NOTES:**
- ALLOW CURB TO CURE BEFORE SHAPING AND COMPACTING BASE ADJACENT TO CURB AND GUTTER.
 - FOLLOWING PLACEMENT OF BITUMINOUS BASE COURSE MILL EXISTING WEAR COURSE ADJACENT TO SAW CUT 2 FT WIDE BY 1 1/2" DEEP AND REMOVE MILLINGS
 - PLACE BITUMINOUS WEAR COURSE OVER BITUMINOUS BASE AND MILLED AREA.
 - STRIP PARKING AREA AS SHOWN
- REFERENCE NOTES:**
- PROTECT EXISTING SANITARY SEWER MANHOLE
 - PROTECT EXISTING LIGHT POLE
 - PROTECT EXISTING TREE
 - PROTECT EXISTING FIRE HYDRANT
 - PROTECT EXISTING TRANSFORMER
 - PREPARE SOIL, FERTILIZE WITH 10-10-10 NPK AT 300 LBS/AC, SEED WITH MnDOT 25-151 AT 120 LBS/AC



Aug 23, 2018 - 2:44pm K:\MUNICIPAL\RA955\ENGINEERING\Restoration\Plan\RA955_Plan.dwg

DATE	REVISION
3/14/18	PER CITY COMMENTS
4/20/18	PER CITY COMMENTS
8/23/18	ADD SEEDING NOTE

I hereby certify that this plan, specification, or report was prepared by me or under my direct supervision and that I am a duly Licensed Professional Engineer under the laws of the State of Minnesota.

Shane Nelson
 SHANE M. NELSON, P.E.
 Date 3/1/18 Lic. No. 43381

DESIGNED BY: AV
 DRAWN BY: AV
 CHECKED BY: SMN

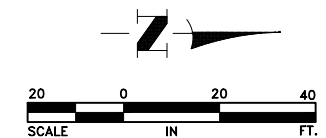


Hakanson Anderson
 Civil Engineers and Land Surveyors
 3601 Thurston Ave., Anoka, Minnesota 55303
 763-427-5860 FAX 763-427-0520
 www.hakanson-anderson.com

SUNFISH LAKE GAS STATION RESTORATION

SITE PLAN
 CITY OF RAMSEY, MN

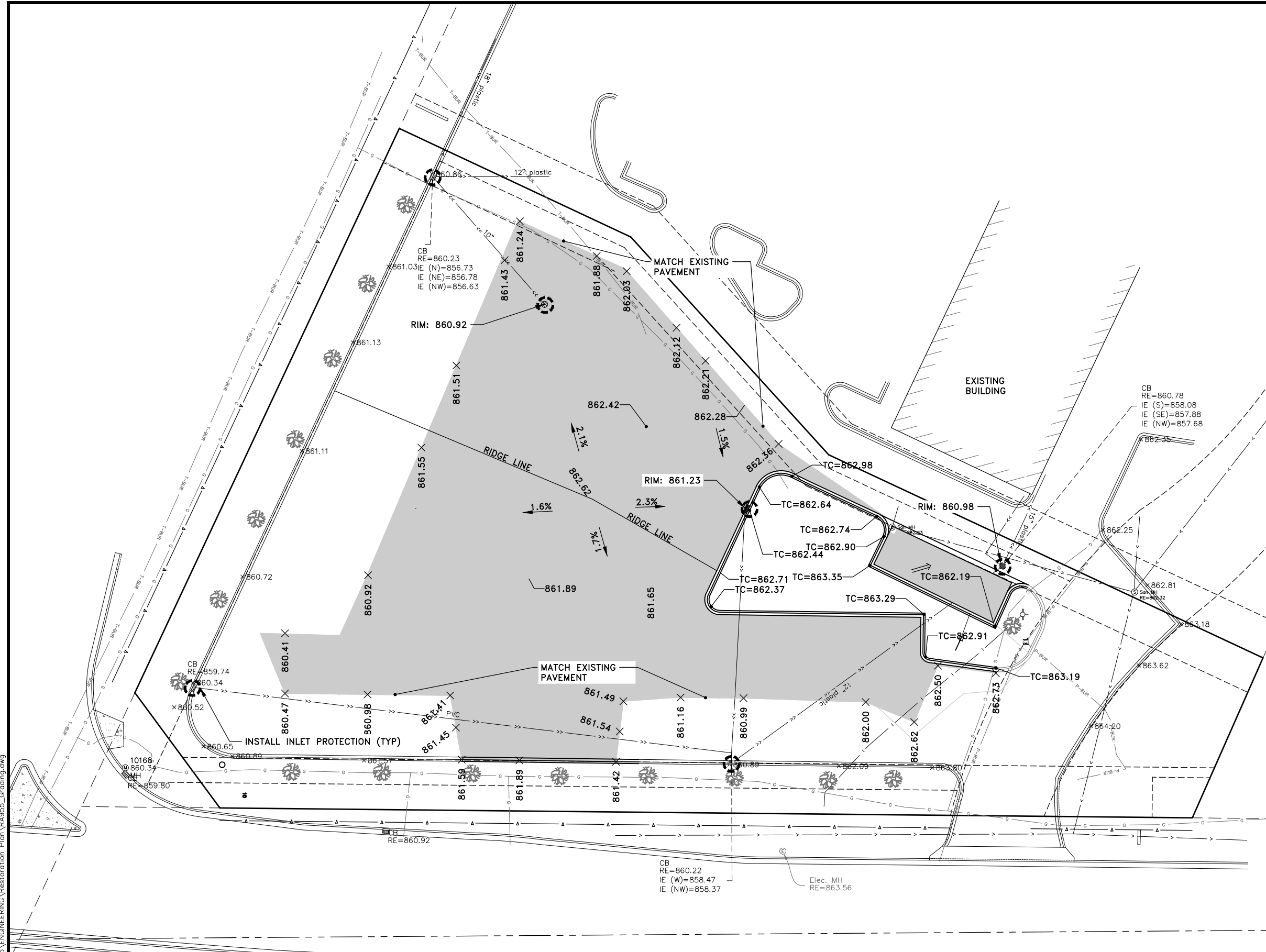
SHEET 5 OF 7 SHEETS
 RA955



LEGEND

--- 856 ---	EXISTING CONTOUR
— 856 —	PROPOSED CONTOUR
— S —	EXISTING SANITARY SEWER
— W —	EXISTING WATERMAIN
— G —	EXISTING STORM SEWER
— G —	EXISTING GAS
— T-BUR —	EXISTING TELEPHONE
— P-BUR —	EXISTING UNDERGROUND ELECTRIC
— >> —	PROPOSED STORM SEWER
— Δ —	LIMITED ACCESS
—=—=—	CONCRETE CURB AND GUTTER
X 856.5	PROPOSED SPOT ELEVATION
⇒	DRAINAGE ARROW
⊙	INLET PROTECTION, PER 3/3 OR EQUAL
■	NEW BITUMINOUS PAVEMENT
—=—=—	NEW CONCRETE CURB AND GUTTER

- GENERAL NOTES:**
1. INSTALL INLET PROTECTION ON ALL CATCH BASINS THAT RECEIVE RUNOFF FROM THE DISTURBED AREA. INLET PROTECTION SHALL BE PER DETAIL 3 ON SHEET 3, OR APPROVED EQUAL, AND SHALL BE REMOVED WHEN CONSTRUCTION IS COMPLETE.
 2. STREETS AND PROPERTY ADJACENT TO THE CONSTRUCTION SHALL BE KEPT FREE FROM SEDIMENT CAUSED BY CONSTRUCTION TRAFFIC, SITE RUNOFF AND BLOWING DUST. HAND BROOM OR PICKUP SWEEPER SHALL BE EMPLOYED DAILY OR AT THE REQUEST OF THE CITY RAMSEY. KICK BROOM STYLE SWEEPER NOT ALLOWED.
 3. THE CONTRACTOR SHALL SHAPE THE AGGREGATE BASE TO THE PLAN ELEVATIONS. EXCESS AGGREGATE BASE SHALL BE PLACED BEHIND THE CURB IN THE MEDIAN TO PREPARE FOR LANDSCAPE ROCK. ALL SURPLUS AGGREGATE BASE BECOMES THE PROPERTY OF THE CONTRACTOR AND SHALL BE REMOVED FROM THE SITE. THIS WORK SHALL BE PAID AS: SUBGRADE PREPARATION
 4. WATER USED FOR DUST CONTROL MAY BE OBTAINED FROM:
CITY OF RAMSEY PUBLIC WORKS
14100 JASPER STREET



Jul 13, 2018 - 2:34pm
 K:\MUNICIPAL\19655\ENGINEERING\Restoration Plan\19655_Grading.dwg

DATE	REVISION
3/14/18	PER CITY COMMENTS
4/20/18	PER CITY COMMENTS

I hereby certify that this plan, specification, or report was prepared by me or under my direct supervision and that I am a duly Licensed Professional Engineer under the laws of the State of Minnesota.

Shane Nelson
 SHANE M. NELSON, P.E.
 Lic. No. VALUE

Date 3/1/18

DESIGNED BY: AV
 DRAWN BY: AV
 CHECKED BY: SMN



Hakanson Anderson
 Civil Engineers and Land Surveyors
 3601 Thurston Ave., Anoka, Minnesota 55303
 763-427-5860 FAX 763-427-0520
 www.hakanson-anderson.com

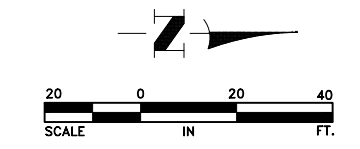
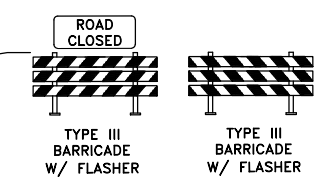
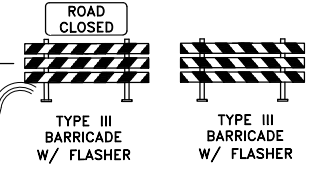
SUNFISH LAKE GAS STATION RESTORATION

PAVING PLAN
 CITY OF RAMSEY, MN

SHEET 6 OF 7 SHEETS
 RA955

US HWY 10

SUNFISH LAKE BLVD



LEGEND

- LOCAL ACCESS TO BE MAINTAINED AT ALL TIMES. DO NOT RESTRICT LANES.
- TYPE A CHANNELIZER

- GENERAL NOTES:**
1. INSTALL TRAFFIC CONTROL PRIOR TO CONSTRUCTION STARTING AND REMOVE AFTER COMPLETION OF CONSTRUCTION.
 2. MAINTAIN ACCESS TO LOCAL BUSINESSES AT ALL TIMES.

TYPE A CHANNELIZER
10' SPACING

10168
860.34
MH

K:\MUNICIPAL\RA955\ENGINEERING\Restoration Plan\RA955_Traffic.dwg Jul 13, 2018 - 2:34pm

DATE	REVISION
3/14/18	PER CITY COMMENTS
4/20/18	PER CITY COMMENTS

I hereby certify that this plan, specification, or report was prepared by me or under my direct supervision and that I am a duly Licensed Professional Engineer under the laws of the State of Minnesota.

Shane Nelson
SHANE M. NELSON, P.E.
Date 3/1/18 Lic. No. 43381

DESIGNED BY:
AV
DRAWN BY:
AV
CHECKED BY:
SMN



Hakanson Anderson
Civil Engineers and Land Surveyors
3601 Thurston Ave., Anoka, Minnesota 55303
763-427-5860 FAX 763-427-0520
www.hakanson-anderson.com

SUNFISH LAKE GAS STATION RESTORATION

TRAFFIC CONTROL
CITY OF RAMSEY, MN

SHEET 7 OF 7 SHEETS