



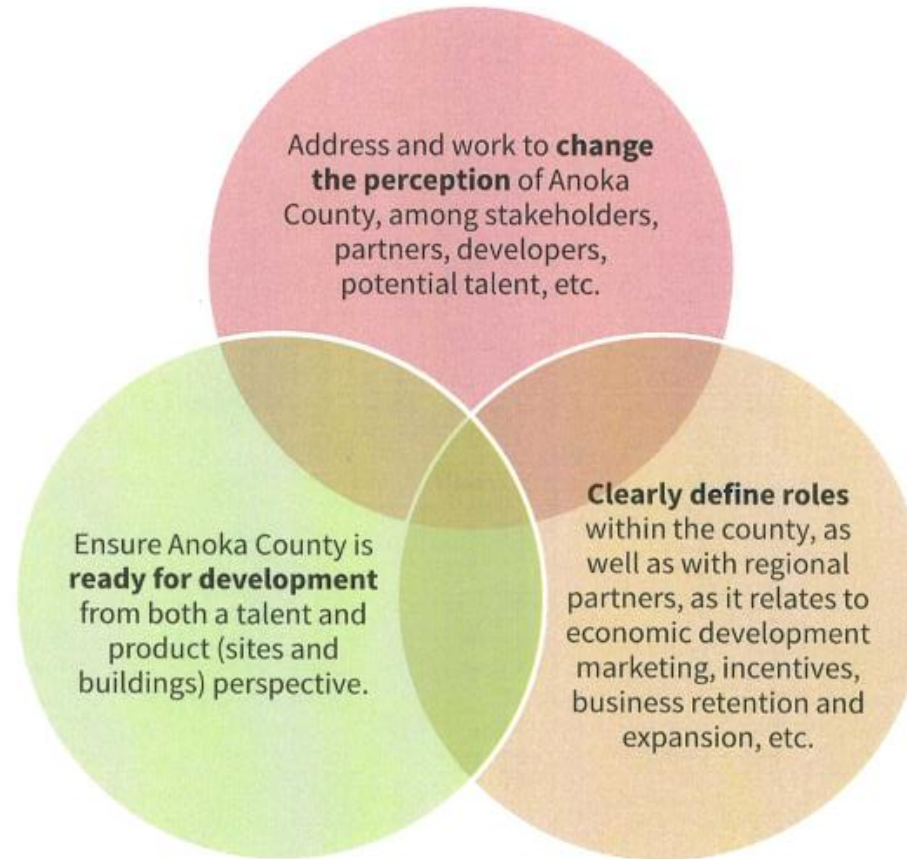
ANOKA COUNTY
Regional Economic Development

Positioned for Success

Phase 3 Complete

- Understanding SWOT
- Positive and Negative Perceptions
- Target Industries
- Future Growth
- Goals and Strategies

Overall Goals

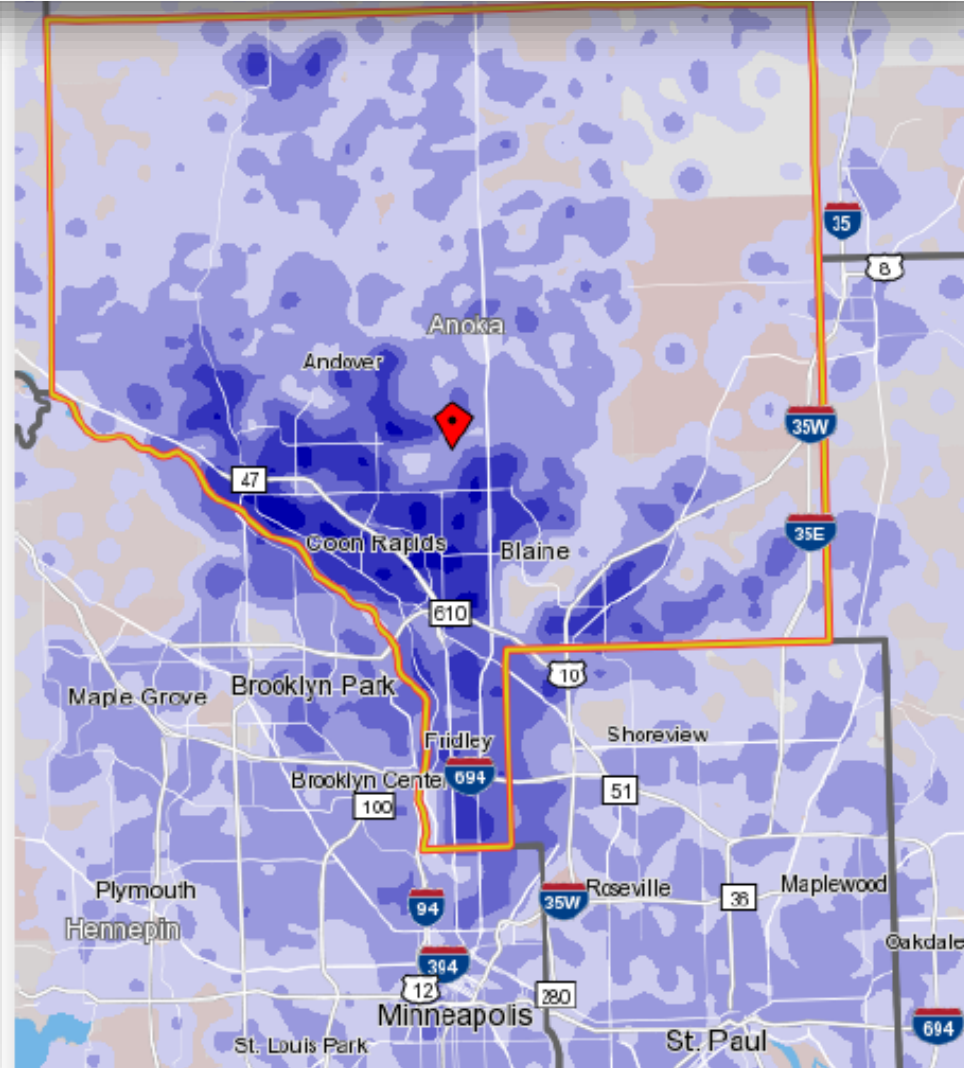


Employment & Target Industries

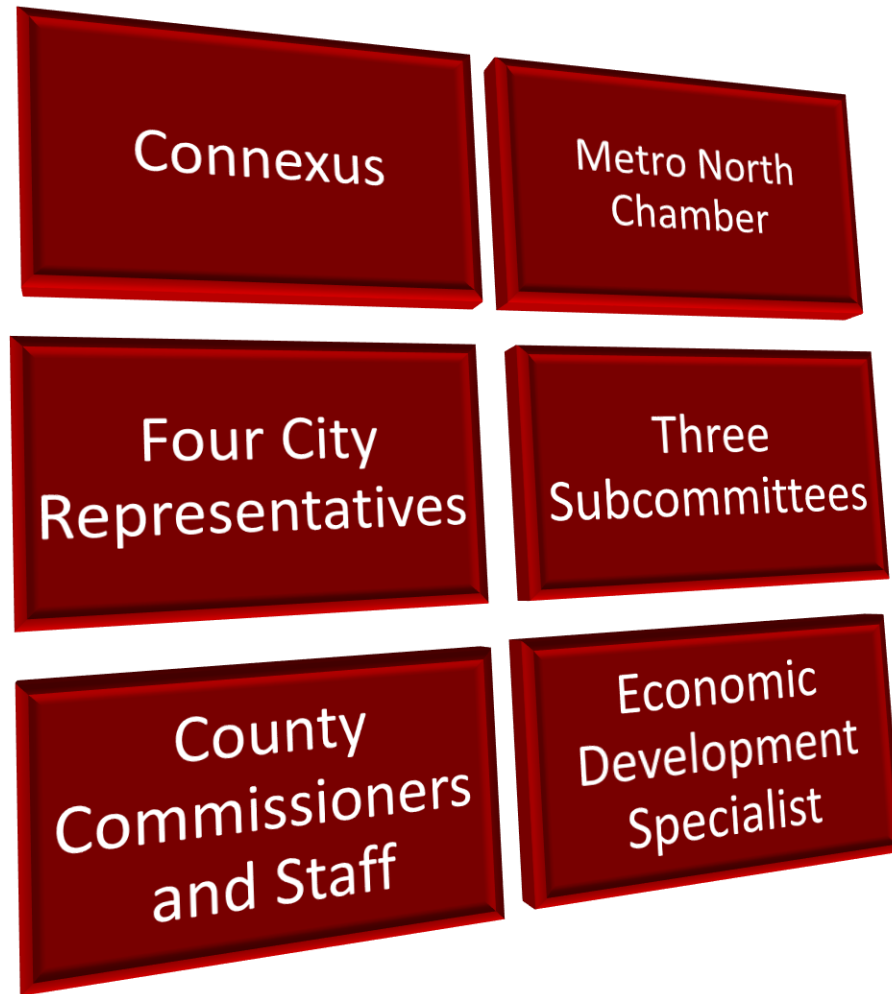
Employment Distribution

In order to analyze the current workforce in Anoka County, we looked at major employment centers within the county, as well as some commuting patterns. The results of this analysis are presented on this page, as well as the following pages.

The maps below highlights the job concentrations in and around the county. The greatest amount of job concentration is in the southwest portion of the county around Anoka City, Coon Rapids, Andover and Blaine, as well as the southern panhandle stretching from Fridley down to the Twin Cities of Minneapolis and St. Paul.



Executive Committee



- Subcommittee Reports
- Action Items
- Economic Development Strategy
- Goals and Visioning

Three Subcommittees



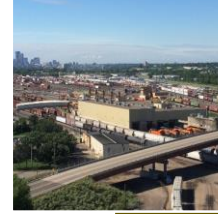
Marketing Subcommittee

- Tackle Perceptions
- Develop Brand
- Develop Website
- Create Regional Profile
- Develop list of Programs
- Target Industry Profile
- Conduct Annual Business Summit
- Success Stories



Readiness Subcommittee

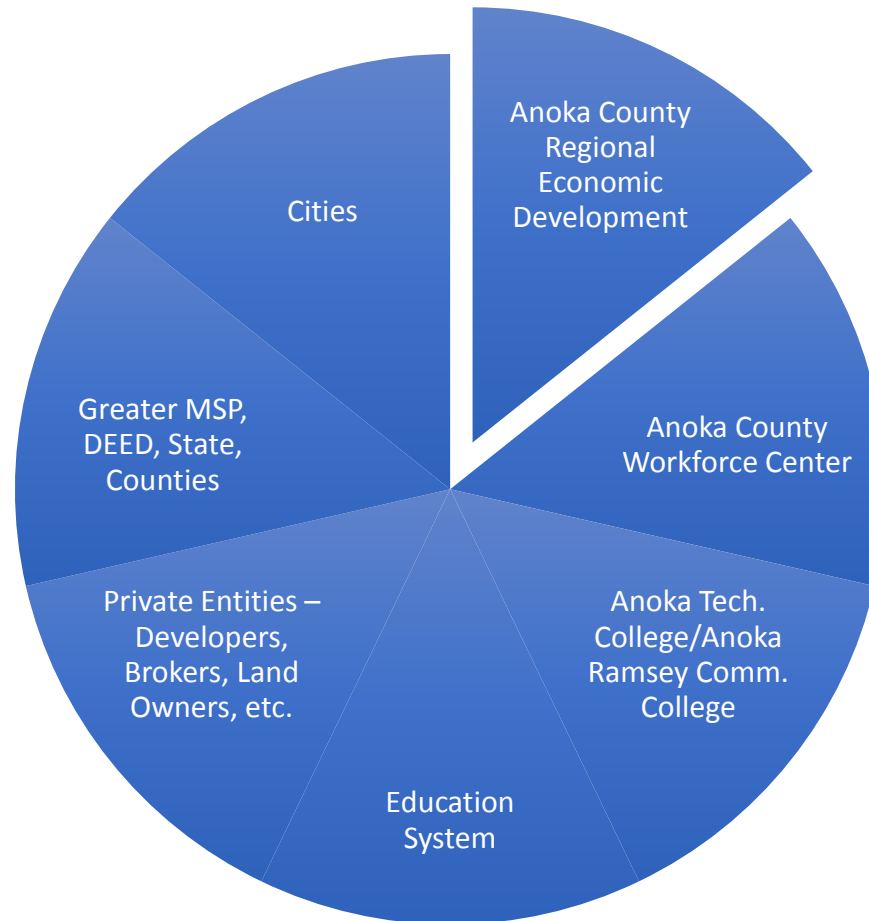
- Evaluate and gather available sites County wide
- Find a S&B data source/feed for website
- Prioritize sites based on readiness
- Identify criteria for ready sites based on target industry



Alignment & Regionalism Subcommittee

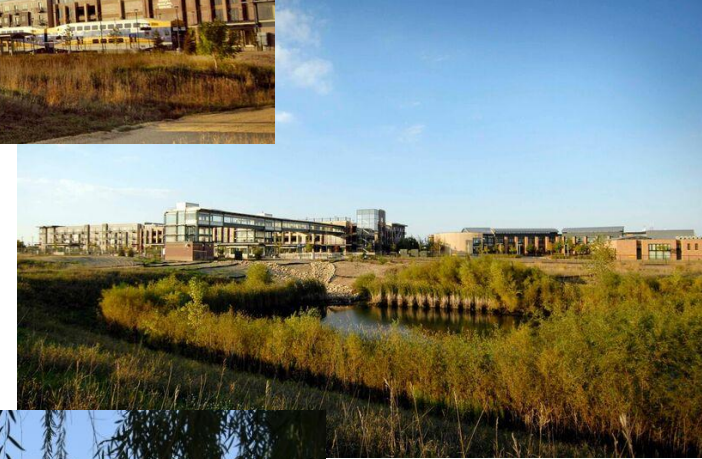
- Capacity Building Training
- Facilitate Work Session
- Create List of Stakeholders
- Assemble Local information for regional benefit

Partnerships



Local Assistance

- Marking properties and community
- Business Outreach
- Representation
- Project Assistance or Coordination
- Workforce Development and Connections
- Attracting future workforce and businesses



Q&A