

**PLANT SCHEDULE - ENTIRE SITE**

SYM	QUANT.	COMMON NAME	BOTANICAL NAME	SIZE	ROOT	COMMENTS
<b>DECIDUOUS TREES</b>						
NRM	11	NORTHWOOD RED MAPLE	<i>Acer rubrum 'Northwood'</i>	2" CAL	B&B	STRAIGHT LEADER, FULL FORM
SHL	7	SHAWP WHITE OAK	<i>Quercus laevis</i>	2" CAL	B&B	STRAIGHT LEADER, FULL FORM
PE	14	PRINCETON ELM	<i>Ulmus americana 'Princeton'</i>	2" CAL	B&B	STRAIGHT LEADER, FULL FORM
PGM	14	PRINCETON GOLD MAPLE	<i>Acer platanoides 'Princeton Gold'</i>	2" CAL	B&B	STRAIGHT LEADER, FULL FORM
<b>EVERGREEN TREES</b>						
BHS	14	BLACK HILLS SPRUCE	<i>Picea glauca 'Densata'</i>	6" HT.	B&B	STRAIGHT LEADER, FULL FORM
<b>SHRUBS - CONIFEROUS &amp; EVERGREEN</b>						
AFD	81	ARCTIC FIRE DOGWOOD	<i>Cornus sericea 'Farrow'</i>	24" HT.	CONT.	
SWN	37	SUMMERYWINE NINEBARK	<i>Physocarpus opulifolius 'Seward'</i>	24" HT.	CONT.	
PS	67	PROCLAIMER'S SPRUCE	<i>Picea pungens 'Proclaimers'</i>	24" HT.	CONT.	
NCB	347	NORTHERN CHARM BOXWOOD	<i>Buxus 'Wilson'</i>	24" HT.	CONT.	
GLS	21	GRO-LOW SUMAC	<i>Rhus aromatica 'Gro-Low'</i>	24" HT.	CONT.	
<b>PERENNIALS &amp; GRASSES</b>						
RS	58	RUSSIAN SAZE	<i>Perovskia atriplicifolia</i>	#1	CONT.	
BES	67	GOLDSTURM RUBECKIA	<i>Rudbeckia fulgida 'Goldsturm'</i>	#1	CONT.	

**IRRIGATION NOTES:**

- ENTIRE SITE SHALL BE FULLY IRRIGATED. THE CONTRACTOR SHALL SUBMIT IRRIGATION SHOP DRAWINGS FOR REVIEW AND APPROVAL BY THE LANDSCAPE ARCHITECT PRIOR TO INSTALLATION.
- SEE MECHANICAL AND ELECTRICAL PLANS AND SPECIFICATIONS FOR IRRIGATION WATER, METER, AND POWER CONNECTIONS.
- CONTRACTOR TO VERIFY LOCATION OF ALL UNDERGROUND/ABOVE GROUND FACILITIES PRIOR TO ANY EXCAVATION/INSTALLATION. ANY DAMAGE TO UNDERGROUND/ABOVE GROUND FACILITIES SHALL BE THE RESPONSIBILITY OF THE CONTRACTOR AND COSTS ASSOCIATED WITH CORRECTING DAMAGES SHALL BE BORNE ENTIRELY BY THE CONTRACTOR.
- SERVICE EQUIPMENT AND INSTALLATION SHALL BE PER LOCAL UTILITY COMPANY STANDARDS AND SHALL BE PER NATIONAL AND LOCAL CODES. EXACT LOCATION OF SERVICE EQUIPMENT SHALL BE COORDINATED WITH THE LANDSCAPE ARCHITECT OR EQUIVALENT AT THE JOB SITE.
- CONTRACTOR SHALL COORDINATE WITH LOCAL UTILITY COMPANY FOR THE PROPOSED ELECTRICAL SERVICE AND METERING FACILITIES.
- IRRIGATION WATER LINE CONNECTION SIZE IS 1/2" AT BUILDING. VERIFY WITH MECHANICAL PLANS COVERAGE.
- ALL MAIN LINES SHALL BE 18" BELOW FINISHED GRADE.
- ALL LATERAL LINES SHALL BE 12" BELOW FINISHED GRADE.
- ALL EXPOSED PVC RISERS, IF ANY, SHALL BE GRAY IN COLOR.
- CONTRACTOR SHALL LAY ALL SLEEVES AND CONDUIT AT 2'-0" BELOW THE FINISHED GRADE OF THE TOP OF PAVEMENT. EXTEND SLEEVES TO 2'-0" BEYOND PAVEMENT.
- CONTRACTOR SHALL MARK THE LOCATION OF ALL SLEEVES AND CONDUIT WITH THE SLEEVING MATERIAL "ELLED" TO 2'-0" ABOVE FINISHED GRADE AND CAPPED.
- FABRICATE ALL PIPE TO MANUFACTURER'S SPECIFICATIONS WITH CLEAN AND SQUARE CUT JOINTS. USE QUALITY GRADE PRIMER AND SOLVENT CEMENT FORMULATED FOR INTENDED TYPE OF CONNECTION.
- BACKFILL ALL TRENCHES WITH SOIL FREE OF SHARP OBJECTS AND DEBRIS.
- ALL VALVE BOXES AND COVERS SHALL BE BLACK IN COLOR.
- GROUP VALVE BOXES TOGETHER FOR EASE WHEN SERVICE IS REQUIRED. LOCATE IN PLANT BED AREAS WHENEVER POSSIBLE.
- IRRIGATION CONTROLLER LOCATION SHALL BE VERIFIED ON-SITE WITH OWNER'S REPRESENTATIVE.
- CONTROL WIRES: 14 GAUGE DIRECT BURIAL, SOLID COPPER IRRIGATION WIRE. RUN UNDER MAIN LINE. USE MOISTURE-PROOF SPLICES AND SPLICE ONLY AT VALVES OR PULL BOXES. RUN SEPARATE HOT AND COMMON WIRE TO EACH VALVE AND ONE (1) SPARE WIRE AND GROUND TO FURTHEST VALVE FROM CONTROLLER. LABEL OR COLOR CODE ALL WIRES.
- AVOID OVER SPRAY ON BUILDINGS, PAVEMENT, WALLS AND ROADWAYS BY INDIVIDUALLY ADJUSTING RADIUS OR ARC ON SPRINKLER HEADS AND FLOW CONTROL ON AUTOMATIC VALVE.
- ADJUST PRESSURE REGULATING VALVES FOR OPTIMUM PRESSURE ON SITE.
- USE SCREENS ON ALL HEADS.
- A SET OF AS-BUILT DRAWINGS SHALL BE MAINTAINED ON-SITE AT ALL TIMES IN AN UPDATED CONDITION.
- ALL PIPE 3" AND OVER SHALL HAVE THRUST BLOCKING AT EACH TURN.
- ALL AUTOMATIC REMOTE CONTROL VALVES WILL HAVE 3" MINIMUM DEPTH OF 3/4" WASHED GRAVEL UNDERNEATH VALVE AND VALVE BOX. GRAVEL SHALL EXTEND 3" BEYOND PERIMETER OF VALVE BOX.
- THERE SHALL BE 3" MINIMUM SPACE BETWEEN BOTTOM OF VALVE BOX COVER AND TOP OF VALVE STRUCTURE.

**LANDSCAPE NOTES:**

- WHERE SHOWN, SHRUB & PERENNIAL BEDS SHALL BE MULCHED WITH 4" DEPTH (MINIMUM AFTER INSTALLATION AND/OR TOP DRESSING OPERATIONS) OF SHREDED CYPRESS MULCH.
- ALL TREES SHALL BE MULCHED WITH SHREDED CYPRESS MULCH TO OUTER EDGE OF SAUCER OR TO EDGE OF PLANTING BED, IF APPLICABLE. ALL MULCH SHALL BE KEPT WITHIN A MINIMUM OF 2" FROM TREE TRUNK.
- IF SHOWN ON PLAN, RANDOM SIZED LIMESTONE BOULDERS COLOR AND SIZE TO COMPLEMENT NEW LANDSCAPING. OWNER TO APPROVE BOULDER SAMPLES PRIOR TO INSTALLATION.
- PLANT MATERIALS SHALL CONFORM WITH THE AMERICAN ASSOCIATION OF NURSERYMEN STANDARDS AND SHALL BE OF HARDY STOCK, FREE FROM DISEASE, DAMAGE AND DISFIGURATION. CONTRACTOR IS RESPONSIBLE FOR MAINTAINING PLUMPNESS OF PLANT MATERIAL FOR DURATION OF ACCEPTANCE PERIOD.
- UPON DISCOVERY OF A DISCREPANCY BETWEEN THE QUANTITY OF PLANTS SHOWN ON THE SCHEDULE AND THE QUANTITY SHOWN ON THE PLAN, THE PLAN SHALL GOVERN.
- CONDITION OF VEGETATION SHALL BE MONITORED BY THE LANDSCAPE ARCHITECT THROUGHOUT THE DURATION OF THE CONTRACT. LANDSCAPE MATERIALS PART OF THE CONTRACT SHALL BE WARRANTED FOR ONE (1) FULL GROWING SEASONS FROM SUBSTANTIAL COMPLETION DATE.
- ALL AREAS DISTURBED BY CONSTRUCTION ACTIVITIES SHALL RECEIVE 4" LAYER LOAM AND SOIL AS SPECIFIED UNLESS OTHERWISE NOTED ON THE DRAWINGS.
- COORDINATE LOCATION OF VEGETATION WITH UNDERGROUND AND OVERHEAD UTILITIES. LIGHTING FIXTURES, DOORS AND WINDOWS. CONTRACTOR SHALL STAKE IN THE FIELD FINAL LOCATION OF TREES AND SHRUBS FOR REVIEW AND APPROVAL BY THE LANDSCAPE ARCHITECT PRIOR TO INSTALLATION.
- ALL PLANT MATERIALS SHALL BE WATERED AND MAINTAINED UNTIL ACCEPTANCE.
- COORDINATE LOCATION OF VEGETATION WITH UNDERGROUND AND OVERHEAD UTILITIES. LIGHTING FIXTURES, DOORS AND WINDOWS. CONTRACTOR SHALL STAKE IN THE FIELD FINAL LOCATION OF TREES AND SHRUBS FOR REVIEW AND APPROVAL BY THE LANDSCAPE ARCHITECT PRIOR TO INSTALLATION.
- REPAIR AT NO COST TO OWNER ALL DAMAGE RESULTING FROM LANDSCAPE CONTRACTOR'S ACTIVITIES.
- REPAIR AT NO COST TO THE OWNER IRRIGATION SYSTEM DAMAGED FROM LANDSCAPE CONSTRUCTION ACTIVITIES.
- PROVIDE SITE WIDE IRRIGATION SYSTEM DESIGN AND INSTALLATION. SYSTEM SHALL BE FULLY PROGRAMMABLE AND CAPABLE OF ALTERNATE DATE WATERING. THE SYSTEM SHALL PROVIDE HEAD TO HEAD OR DRIP COVERAGE AND BE CAPABLE OF DELIVERING ONE INCH OF PRECIPITATION PER WEEK. SYSTEM SHALL EXTEND INTO THE PUBLIC RIGHT-OF-WAY TO THE EDGE OF PAVEMENT/BACK OF CURB.
- CONTRACTOR SHALL SECURE APPROVAL OF PROPOSED IRRIGATION SYSTEM INCLUDING PRICING FROM OWNER PRIOR TO INSTALLATION.
- CONTACT DON ZART AT (612)473-2726 FOR COORDINATION REGARDING PARK DEDICATION FEES

**LANDSCAPE CALCULATIONS:**

**PROPOSED LANDSCAPE:**  
 1 TREE / 50 LF OF SITE PERIMETER  
 2,147.0 SF / 500 = 4 TREES REQUIRED  
 SEE PLANT SCHEDULE

1 TREE / 1000 SF OF BUILDING FOOTPRINT AREA  
 29,600.0 SF / 1000 = 30 TREES REQUIRED  
 SEE PLANT SCHEDULE

1 SHRUB / 1 LINEAL FOOT OF SITE PERIMETER  
 2,147.0 SF / 1 = 2,147 SHRUBS REQUIRED  
 SEE PLANT SCHEDULE

1 SHRUB / 300 SF OF BUILDING FOOTPRINT AREA  
 29,600.0 SF / 300 = 99 SHRUBS REQUIRED  
 SEE PLANT SCHEDULE

\*WHICHEVER IS GREATER SHALL BE APPLIED

**LAZYDAYS OF MINNEAPOLIS**  
 RIVERDALE DRIVE NW., RAMSEY, MN  
**LAZYDAYS OF MINNEAPOLIS**  
 8390 HIGHWAY 10 NW, ANOKA, MN 55303

PROJECT  
 I HEREBY CERTIFY THAT THIS PLAN, SPECIFICATION, OR REPORT WAS PREPARED BY ME OR UNDER MY DIRECT SUPERVISION AND THAT I AM A DULY LICENSED LANDSCAPE ARCHITECT UNDER THE LAWS OF THE STATE OF MINNESOTA.

Patrick J. Sarver  
 DATE 07/09/18 LICENSE NO. 28902

ISSUE/SUBMITTAL SUMMARY  
 DATE DESCRIPTION  
 07/09/18 CITY SUBMITTAL

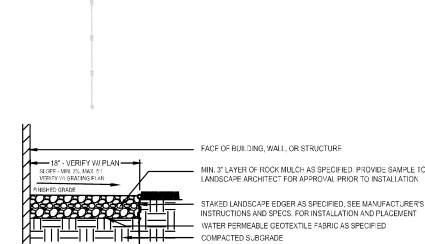
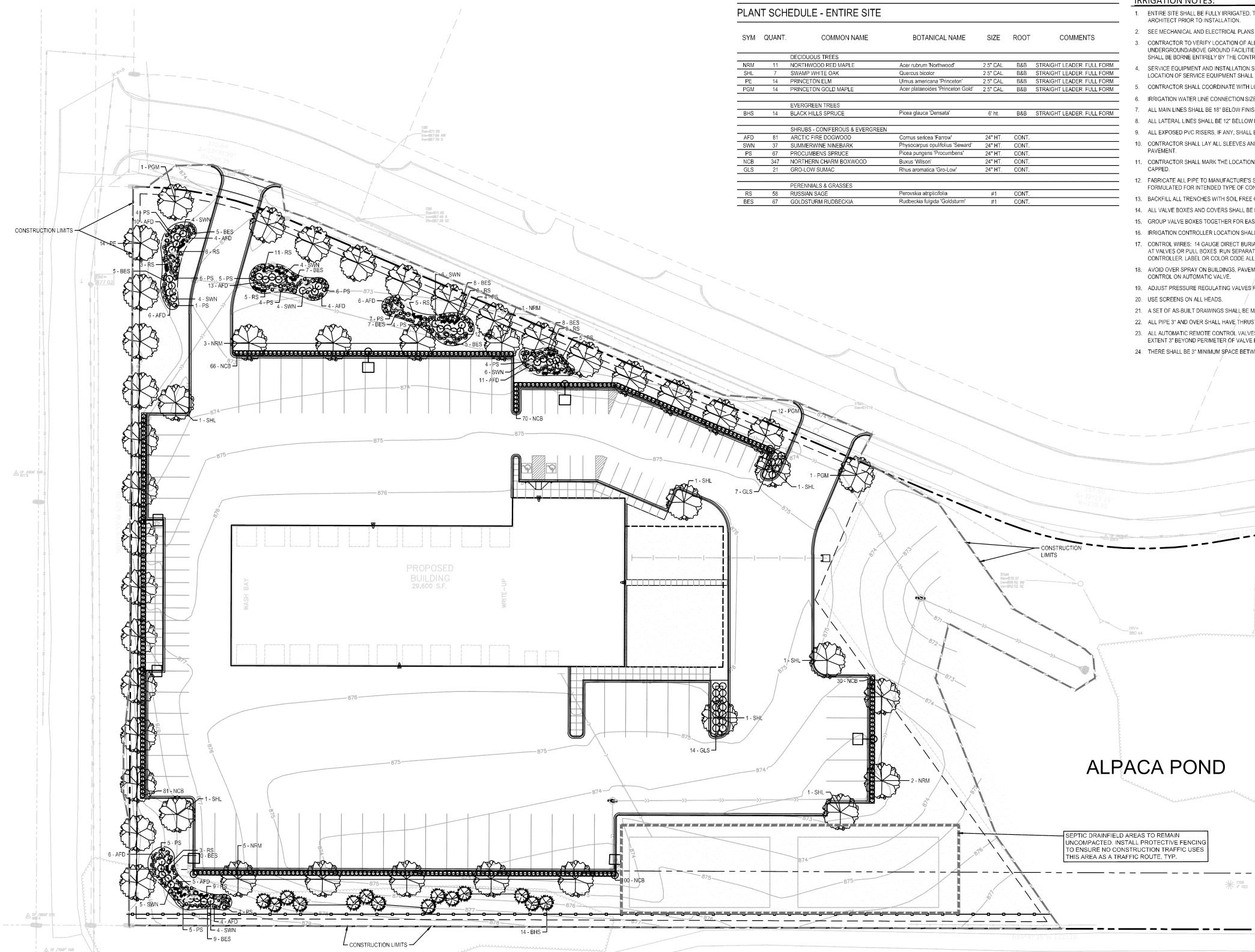
REVISION SUMMARY  
 DATE DESCRIPTION

PROJECT NUMBER: 10213

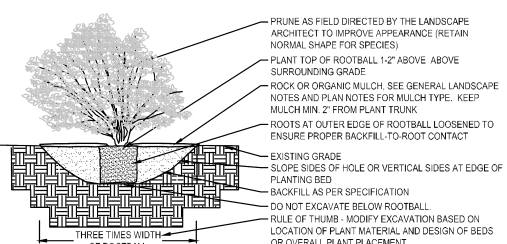
LANDSCAPE PLAN

GOPHER STATE ONE CALL  
 WWW.GOPHERSTATEONECALL.GOV  
 (800) 252-1188 TOLL FREE  
 (651) 454-0002 LOCAL

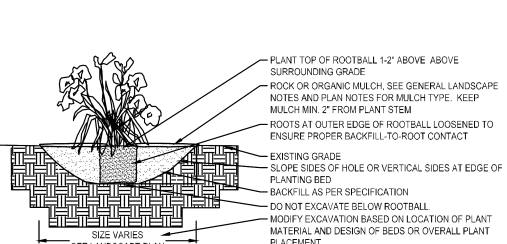
L1.0



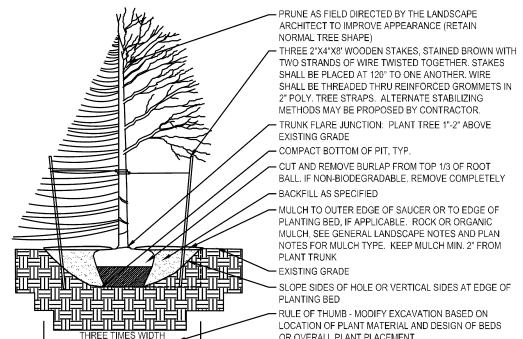
**1 AGGREGATE MAINTENANCE STRIP**  
 NTS



**2 DECIDUOUS & CONIFEROUS SHRUB PLANTING**  
 NTS



**3 PERENNIAL BED PLANTING**  
 NTS



**4 DECIDUOUS & CONIFEROUS TREE PLANTING**  
 NTS

**LEGEND**

- SEED MIX 1 - MNDOT 34-262 WET PRAIRIE, PER MNDOT SEEDING MANUAL SPECIFICATIONS (2014)
- SEED MIX 2 - MNDOT 35-221 DRY PRAIRIE GENERAL, PER MNDOT SEEDING MANUAL SPECIFICATIONS (2014)
- 1" DIA. DECORATIVE ROCK MAINTENANCE STRIP OVER FILTER FABRIC, SAMPLES REQUIRED. PROVIDE EDGING AS SHOWN ON PLAN
- 2"-4" DIA. ANGULAR RIP-RAP, MIN. 6" DEPTH - SAMPLES REQUIRED.
- ALL PLANTING/SHRUB BEDS - SHREDED CYPRESS MULCH, SAMPLES REQUIRED PROVIDE EDGING AS SHOWN ON PLAN
- SOD
- PROPOSED CANOPY & EVERGREEN TREE SYMBOLS - SEE SCHEDULE AND PLAN FOR SPECIES AND PLANTING SIZES
- PROPOSED DECIDUOUS AND EVERGREEN SHRUB SYMBOLS - SEE SCHEDULE AND PLAN FOR SPECIES AND PLANTING SIZES
- PROPOSED PERENNIAL PLANT SYMBOLS - SEE SCHEDULE AND PLAN FOR SPECIES AND PLANTING SIZES
- DECORATIVE BOULDERS, 18"-30" DIA.

GOPHER STATE ONE CALL  
 WWW.GOPHERSTATEONECALL.GOV  
 (800) 252-1188 TOLL FREE  
 (651) 454-0002 LOCAL

