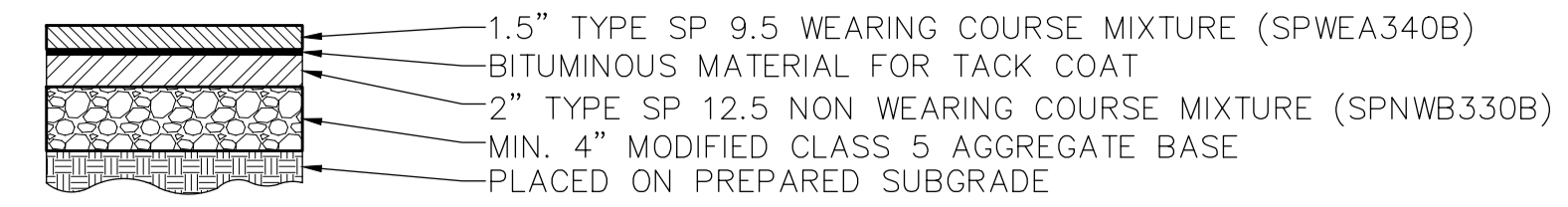
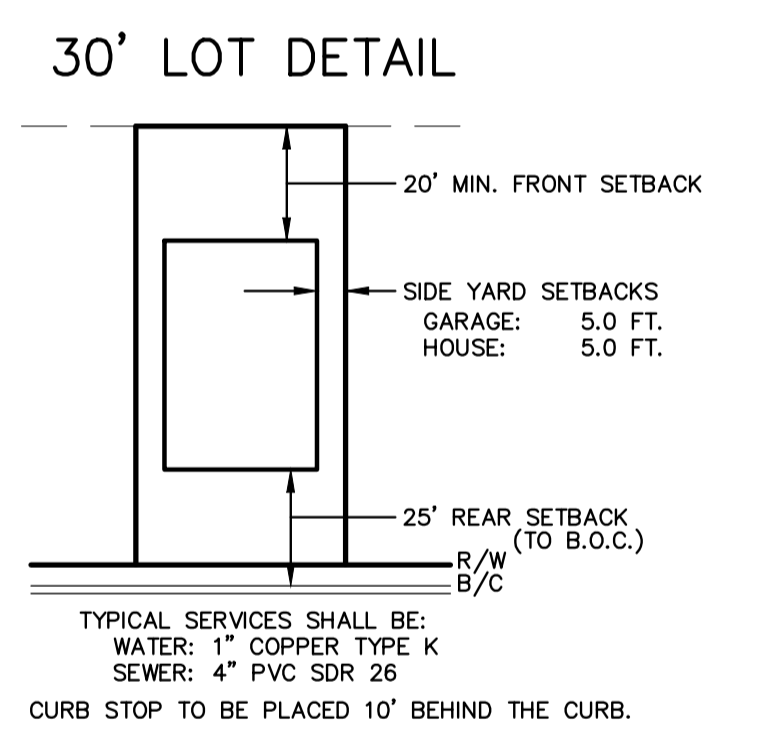
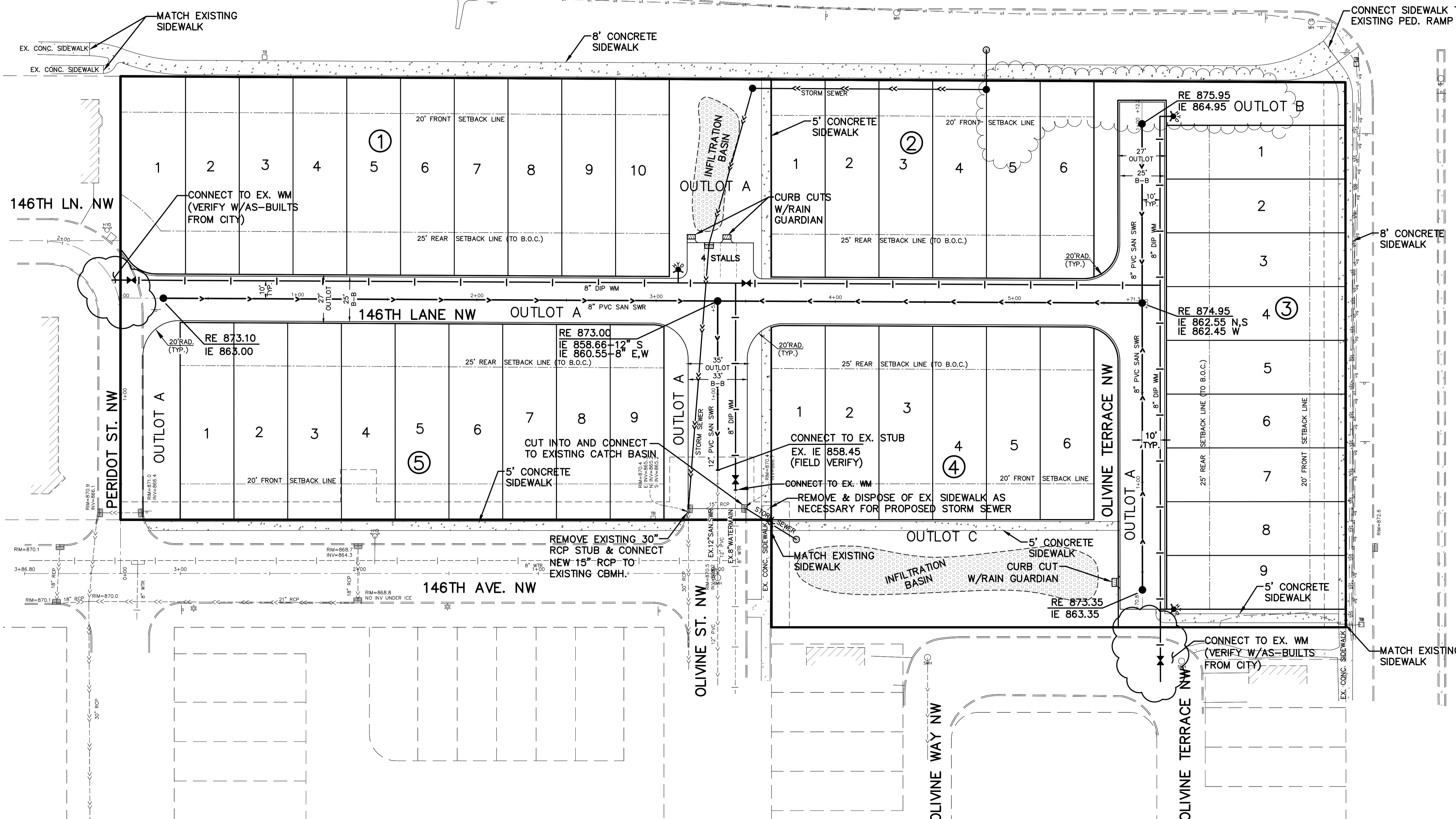


STREET SECTION

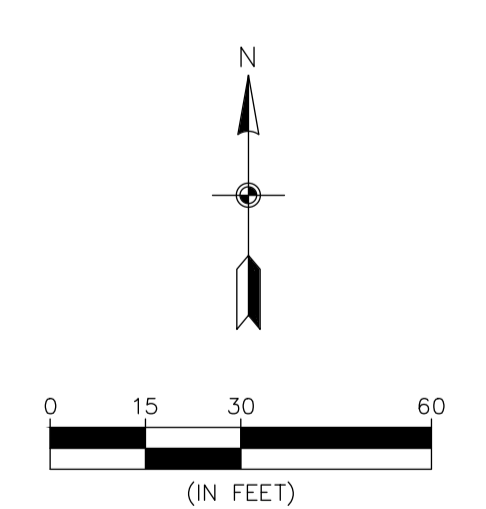


SITE PLAN LEGEND

	EXISTING	PROPOSED
LIGHT POLE		
SANITARY MANHOLE		
MISCELLANEOUS SIGN		
EXISTING SPOT ELEVATION		
EXISTING TREE		
TELEVISION BOX		
FIRE HYDRANT		
GATE VALVE		
CLEANOUT		
ELECTRIC BOX		
GAS METER		
CATCH BASIN		
RAIN GUARDIAN		
ELECTRIC METER		
TELEPHONE BOX		
UTILITY POLE		
FLARED END SECTION		
STORM MANHOLE		
SERVICE		
SOIL BORING/TEST HOLE		
RETAINING WALL		
WATERMAIN		
SANITARY SEWER		
FORCEMAIN		
STORM SEWER		
PROPERTY LINE		
SETBACK LINE		
CURB		
WETLAND		
DITCH		
UNDERGROUND TELEPHONE		
UNDERGROUND ELECTRIC		
UNDERGROUND GAS		
UNDERGROUND FIBEROPTIC		
FENCE		
OVERHEAD ELECTRIC		
CONCRETE SURFACE		
BITUMINOUS SURFACE		
		MODULAR ROCK



TYPICAL SERVICES SHALL BE:
 WATER: 1" COPPER TYPE K
 SEWER: 4" PVC SDR 26
 CURB STOP TO BE PLACED 10' BEHIND THE CURB.



BENCHMARK

- Minnesota Department of Transportation Geodetic Monument named 0202 B (GSID Station #93781) Elev. = 865.02 (NAVD 88)
- Minnesota Department of Transportation Geodetic Monument named HYATT MNDT (GSID Station #808) Elev. = 878.97 (NAVD 88)

Carlson McCain
 • environmental engineering • surveying
 3890 Pheasant Ridge Drive NE, Suite 100, Blaine, MN 55449
 Phone: (763) 489-7900 Fax: (763) 489-7959
 www.carlsonmccain.com

I hereby certify that this plan, specification or report was prepared by me or under my direct supervision and that I am a duly Licensed Professional Engineer under the laws of the State of Minnesota
 Print Name: Brian F. Kallio, P.E.
 Signature: *Brian F. Kallio*
 Date: 5/8/18 License #: 25817

Drawn: LOC
 Designed: BFK
 Date: 5/8/18

CENTRA HOMES, LLC
 11460 Robinson Drive N.W.
 Minneapolis, MN 55433

COTTAGES AT THE COR
 Ramsey, Minnesota

PRELIMINARY SITE & UTILITY PLAN