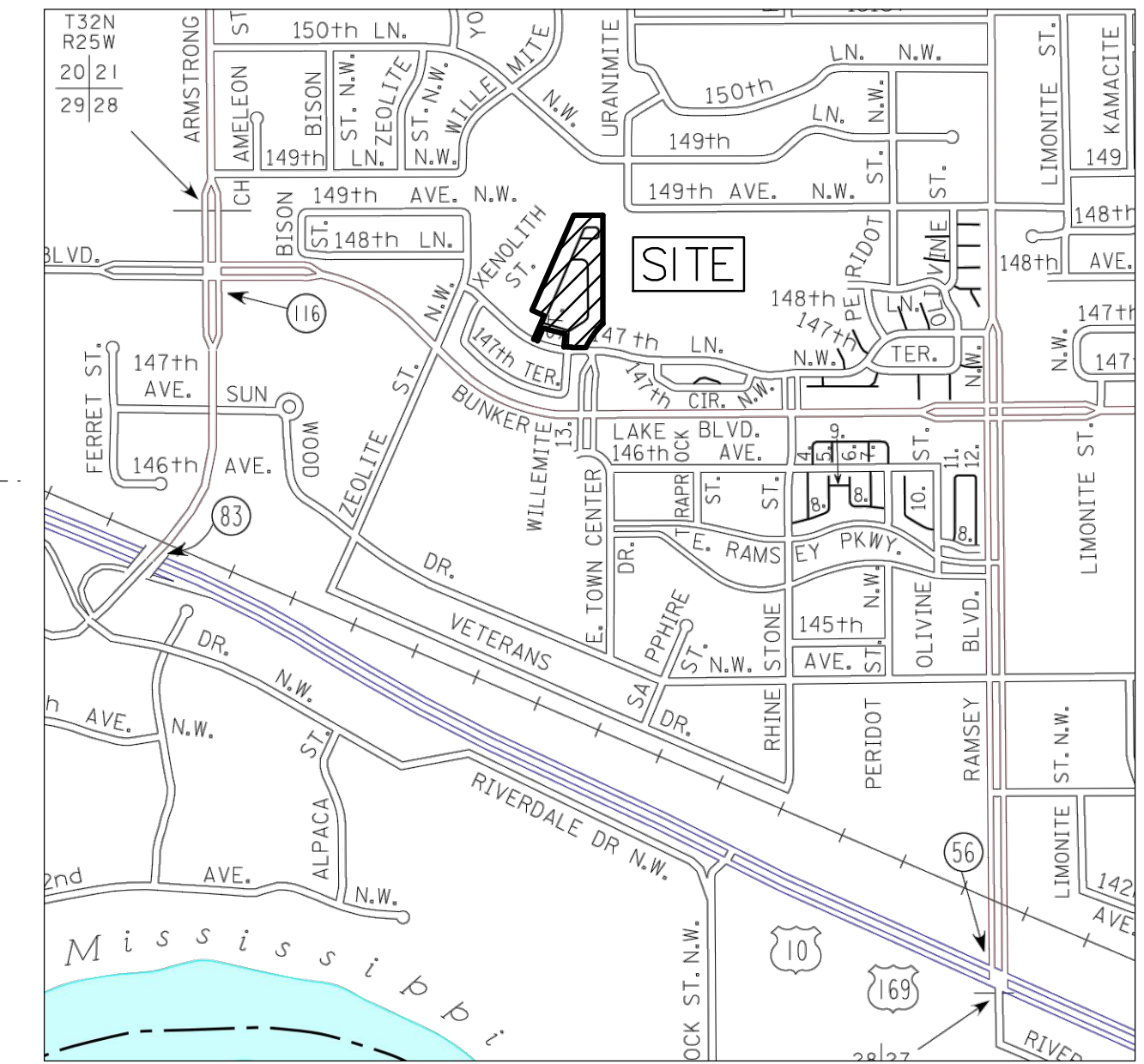
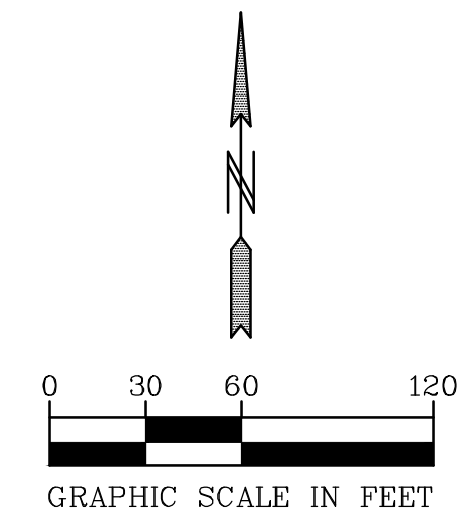


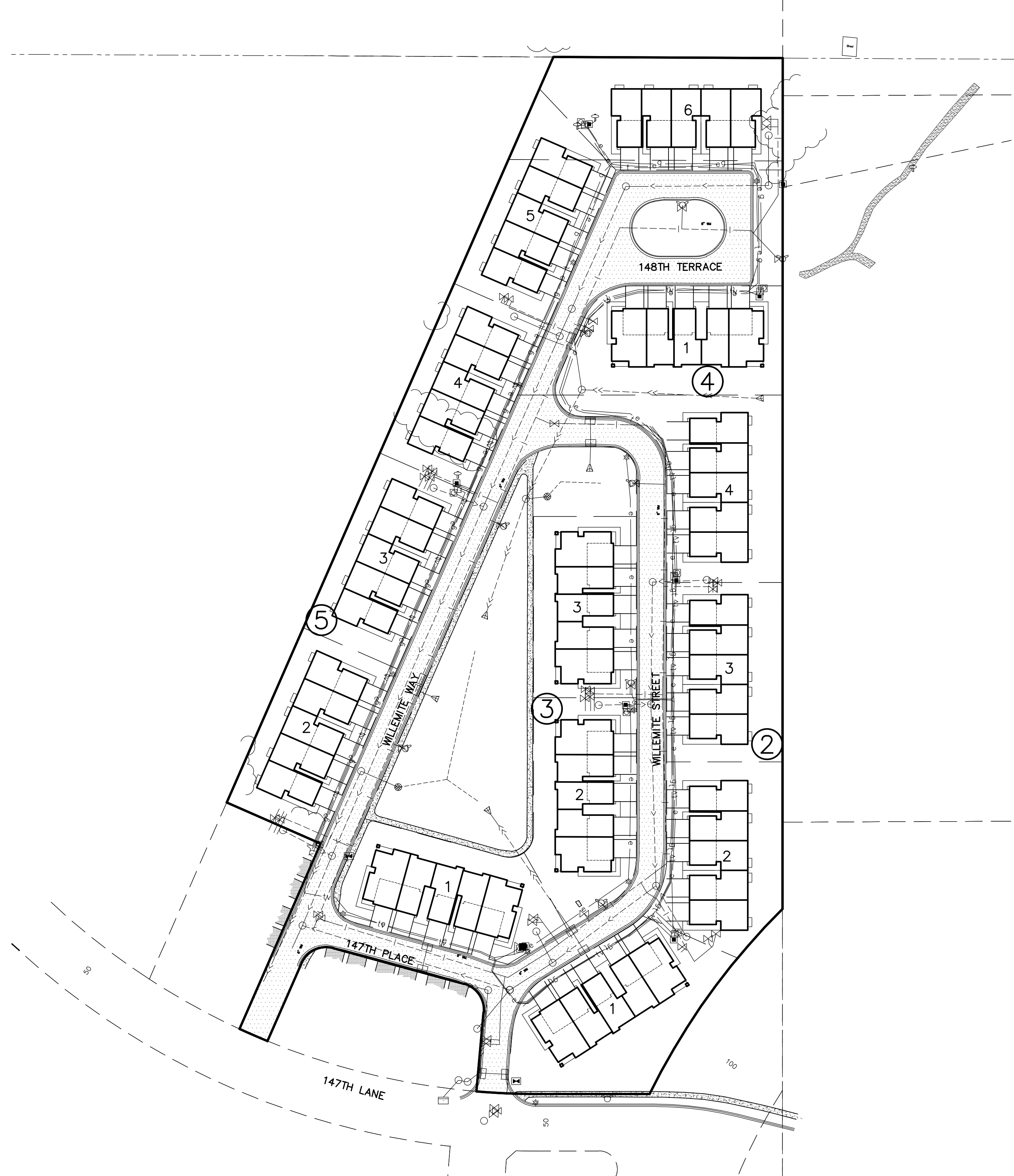
RAMSEY TOWN CENTER 9TH ADDITION SITE PLAN RAMSEY, MINNESOTA



LOCATION MAP



- SHEET INDEX**
- 1. COVER SHEET
 - 2. LEGEND
 - 3. EXISTING CONDITIONS
 - 4. SITE PLAN
 - 5. LANDSCAPE PLAN/TREE PRESERVATION
 - 6. UTILITY PLAN
 - 7. GRADING PLAN



PREPARED BY PIONEER ENGINEERING, P.A.
 JOHN M. MOLINARO
 REGISTERED PROFESSIONAL CIVIL ENGINEER
 45831
 REG. NO.
 PETER J. HAWKINSON
 REGISTERED PROFESSIONAL LAND SURVEYOR
 42299
 REG. NO.
 DEVELOPER
 TATE BAXTER
 CENTRA HOMES, LLC
 11460 ROBINSON DR NW
 COON RAPIDS, MN 55433



2422 Enterprise Drive
 Mendota Heights, MN 55120
 (651) 681-1914
 Fax: 681-9488
 www.pioneereng.com

I hereby certify that this plan was prepared by me or under my direct supervision and that I am a duly Licensed Professional Engineer under the laws of the State of Minnesota.

Name: John M. Molinaro
 Reg. No.: 45831
 Date: 10-09-2018

Revisions

Date: 10-09-18
 Designed: JMM
 Drawn: JMM

COVER SHEET

CENTRA HOMES, LLC
 11460 ROBINSON DR. NW
 COON RAPIDS, MN 55433

RAMSEY TOWN CENTER 9TH ADD.
 RAMSEY, MINNESOTA

1 OF 7



Know what's below.
 Call before you dig.

00-ENG-118193-SHEET-COVR