

CITY OF RAMSEY

WOOD POND HILLS & CHESTNUT RIDGE STREET RECONSTRUCTIONS

CITY IMPROVEMENT PROJECT NO. 19-03

GOVERNING SPECIFICATIONS

THE 2018 EDITION OF THE MINNESOTA DEPARTMENT OF TRANSPORTATION "STANDARD SPECIFICATIONS FOR CONSTRUCTION" SHALL GOVERN.

ALL FEDERAL, STATE AND LOCAL LAWS, REGULATIONS AND ORDINANCES SHALL BE COMPLIED WITH IN THE CONSTRUCTION OF THIS PROJECT.

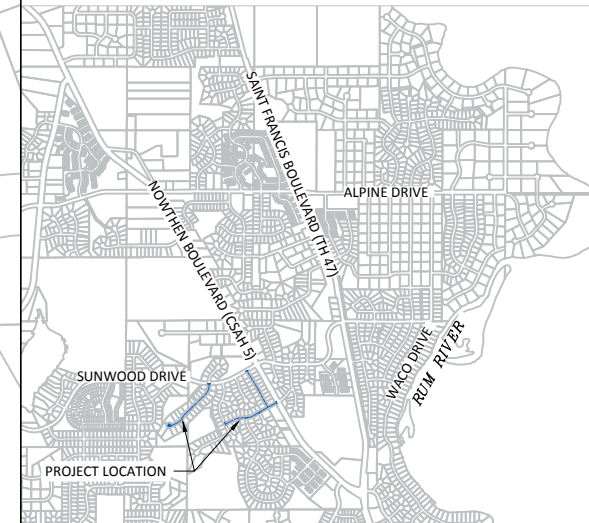
ALL TRAFFIC CONTROL DEVICES AND SIGNING SHALL CONFORM TO THE MINNESOTA MANUAL ON UNIFORM TRAFFIC CONTROL DEVICES, INCLUDING THE FIELD MANUAL FOR TEMPORARY TRAFFIC CONTROL ZONE LAYOUTS.

SHEET INDEX

THIS PLAN CONTAINS 13 SHEETS

SHEET No.	DESCRIPTION
1	TITLE SHEET
2	STATEMENT OF ESTIMATED QUANTITIES
3	TYPICAL SECTION
4-5	DETAILS
6	PRIVATE UTILITY LAYOUT
7-9	EXISTING CONDITIONS AND REMOVALS
10	EROSION CONTROL
11-13	STREET CONSTRUCTION

LOCATION MAP



LEGEND

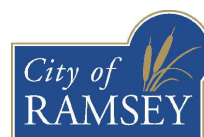
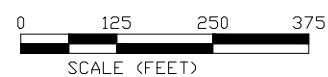
- | | | | |
|--|-------------------|--|------------------------------|
| | LIGHT POLE | | EASEMENT |
| | TREE | | RIGHT OF WAY |
| | SHRUB | | ELECTRIC |
| | SIGN | | OVERHEAD ELECTRIC |
| | VALVE | | GAS |
| | UTILITY PEDESTAL | | TELECOMMUNICATIONS |
| | HAND HOLE | | STORM SEWER |
| | REMOVE TREE | | SANITARY SEWER |
| | 3'X2' CATCH BASIN | | WATERMAIN |
| | MANHOLE | | SAWCUT PAVEMENT |
| | INLET PROTECTION | | TREE LINE |
| | HYDRANT | | FENCE |
| | VALVE | | LANDSCAPING |
| | | | RETAINING WALL |
| | | | 5' CONTOUR LINE |
| | | | 1' CONTOUR LINE |
| | | | SILT FENCE |
| | | | SURM. CONCRETE CURB & GUTTER |
| | | | B618 CONCRETE CURB & GUTTER |
| | | | REMOVE BITUMINOUS PAVEMENT |
| | | | SODDING TYPE LAWN |
| | | | CONCRETE PAVEMENT |
| | | | BITUMINOUS PAVEMENT |
| | | | GRAVEL SURFACE |
| | | | ROCK CONSTRUCTION EXIT |

I hereby certify that this plan, specification, or report was prepared by me or under my direct supervision and that I am a duly Licensed Professional Engineer under the laws of the State of Minnesota.

Bruce Westby
 BRUCE WESTBY, P.E.
 RAMSEY CITY ENGINEER

40116 DATE 4/4/19
 LIC. NO.

DATE	REVISION



CITY OF RAMSEY
 7550 SUNWOOD DRIVE
 RAMSEY, MN 55303
 (763) 427-1410 FAX (763) 433-9898

THE SUBSURFACE UTILITY INFORMATION IN THIS PLAN IS UTILITY QUALITY LEVEL D. THIS QUALITY LEVEL WAS DETERMINED ACCORDING TO THE GUIDELINES OF CI/ASCE 38-02, ENTITLED "STANDARD GUIDELINES FOR THE COLLECTION AND DEPICTION OF EXISTING SUBSURFACE UTILITY DATA."

NOTE: EXISTING UTILITY INFORMATION SHOWN ON THIS PLAN HAS BEEN PROVIDED BY THE UTILITY OWNER. THE CONTRACTOR SHALL FIELD VERIFY EXACT LOCATIONS AS REQUIRED BY STATE LAW. NOTIFY GOPHER STATE ONE CALL 1-800-252-1166 OR 651-454-0002



Call before you dig
 811
 651 454-0002 Metro
 800 252-1166 Outstate
www.gopherstateonecall.org

STATEMENT OF ESTIMATED QUANTITIES

19-03 WOOD POND HILLS & CHESTNUT RIDGE STREET RECONSTRUCTIONS

PAGE NO.	NOTE	MNDOT NO.	ITEM DESCRIPTION	UNIT	ESTIMATED QUANTITY
		2021.501	MOBILIZATION	LS	1
7 - 9	1	2104.501	REMOVE CONCRETE CURB AND GUTTER	LF	900
7 - 9	1	2104.503	REMOVE CONCRETE PAVEMENT - DRIVEWAYS	SF	80
7 - 9	1	2104.505	REMOVE BITUMINOUS PAVEMENT - DRIVEWAYS	SY	15
7 - 9	1	2104.505	REMOVE BITUMINOUS PAVEMENT	SY	73
8	1	2104.505	REMOVE CONCRETE VALLEY GUTTER	SY	19
7 - 9	1	2104.511	SAWING CONCRETE PAVEMENT - FULL DEPTH	LF	292
7 - 9	1	2104.513	SAWING BITUMINOUS PAVEMENT - FULL DEPTH	LF	340
7 - 9	2	2105.501	COMMON EXCAVATION (EV)	CY	23
	8	2105.507	SUBGRADE EXCAVATION, REMOVE UNSUITABLE MATERIAL (EV)	CY	500
	8	2105.522	SELECT GRANULAR BORROW (CV)	CY	600
11 - 13		2112.501	SUBGRADE PREPARATION	RDST	34
11 - 13		2130.501	WATER	MGAL	50
7 - 9	5	2215.501	BITUMINOUS PAVEMENT RECLAMATION (FULL DEPTH)	SY	10,332
7 - 9	1	2232.501	MILL BITUMINOUS PAVEMENT (2' WIDTH X 1.5" DEPTH)	SY	69
11 - 13	7	2301.603	CURING COMPOUND FOR EXISTING CONCRETE CURB AND GUTTER	LF	5,709
7 - 9	2, 5	2331.607	HAUL AND DISPOSE BIT PAVEMENT RECLAMATION (LV)	CY	1,206
11 - 13	3	2357.502	BITUMINOUS MATERIAL FOR TACK COAT	GAL	732
11 - 13	4	2360.501	TYPE SP 9.5 WEARING COURSE MIXTURE (SPWEA340C) (1.5")	TON	863
11 - 13	4	2360.502	TYPE SP 12.5 NON-WEARING COURSE MIXTURE (SPNWB330C) (2.0")	TON	1,143
11 - 13	4	2360.505	TYPE SP 9.5 WEARING COURSE MIXTURE (SPWEA340C) DRIVEWAYS (2.0")	TON	2
7 - 9		2504.602	ADJUST VALVE BOX	EA	10
7 - 9		2504.602	REPLACE BROKEN VALVE BOX	EA	5
7 - 9		2506.522	ADJUST FRAME AND RING CASTING	EA	15
11 - 13		2506.602	GROUT CATCH BASIN	EA	3
11 - 13		2506.602	RESET CATCH BASIN CASTING	EA	8
11 - 13		2531.501	CONCRETE CURB & GUTTER DESIGN SURMOUNTABLE	LF	780
11 - 13		2531.501	CONCRETE CURB & GUTTER DESIGN B618	LF	120
11 - 13		2531.507	6" CONCRETE DRIVEWAY PAVEMENT	SY	9
12		2531.604	7" CONCRETE VALLEY GUTTER	SY	33
11 - 13		2540.601	LANDSCAPE RESTORATION	LS	1
	6	2563.601	TRAFFIC CONTROL	LS	1
10		2573.53	STORM DRAIN INLET PROTECTION	EA	14
11 - 13	2	2574.525	TOPSOIL (LV)	CY	27
11 - 13		2575.505	SODDING TYPE LAWN	SY	200

PAY ITEM NOTES:

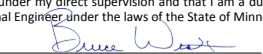
1. REMOVAL LIMITS SHALL BE MARKED IN THE FIELD BY CITY STAFF.
2. EV TO CV CONVERSION FACTOR = 1.2.
3. ESTIMATED QUANTITY BASED ON APPLICATION RATE OF 0.07 GAL/SY.
4. ESTIMATED QUANTITY BASED ON APPLICATION RATE OF 110 LB/SY-IN.
5. STOCKPILING OF BITUMINOUS PAVEMENT RECLAMATION IS INCIDENTAL TO THE HAUL BIT PAVEMENT RECLAMATION PAY ITEM. THE BITUMINOUS PAVEMENT RECLAMATION MATERIAL SHALL BE STOCKPILED AT THE CITY PUBLIC WORKS FACILITY LOCATED AT 14100 JASPER STREET AND SHALL BE COORDINATED WITH CITY STAFF.
6. LUMP SUM QUANTITY SHALL INCLUDE ALL COST REQUIRED FOR MAINTAINING ALL FLAGGING OPERATIONS AS NECESSARY, MAINTAINING PEDESTRIAN ACCESS ROUTES, ANY SIGNAGE AND BARRICADES AS NECESSARY.
7. EXISTING CONCRETE CURB AND GUTTER SHALL BE COVERED WITH WHITE CURE. CONTRACTOR SHALL SWEEP CLEAN THE CONCRETE CURB AND GUTTER PRIOR TO PLACEMENT OF CURE.
8. ITEM IS FOR ANTICIPATED SUBGRADE CORRECTIONS. PER THE GEOTECHNICAL REPORT PREPARED BY NTI, THE GENERAL SUBGRADE SOILS ARE POORLY GRADED SAND WITH SILT, AND A POCKET OF CLAYEY SAND WAS FOUND. CITY STAFF WILL MAKE A DETERMINATION IN THE FIELD, AFTER THE BITUMINOUS PAVEMENT RECLAMATION, IF ANY SUBGRADE CORRECTIONS WILL BE REQUIRED.

GENERAL NOTES:

1. THE LOCATIONS OF EXISTING UNDERGROUND UTILITIES ARE SHOWN IN AN APPROXIMATE WAY ONLY. IT IS NOT GUARANTEED ANY OR ALL EXISTING UTILITIES ARE SHOWN. THE CONTRACTOR SHALL DETERMINE THE EXACT LOCATION OF ALL EXISTING UTILITIES BEFORE COMMENCING WORK. HE AGREES TO BE FULLY RESPONSIBLE FOR ANY AND ALL DAMAGES WHICH MIGHT BE OCCASIONED BY HIS FAILURE TO EXACTLY LOCATE AND PRESERVE ANY AND ALL UNDERGROUND UTILITIES.
2. THE CONTRACTOR SHALL DETERMINE THE EXACT LOCATION OF ALL EXISTING IRRIGATION SYSTEMS WITHIN THE PROJECT CONSTRUCTION LIMITS BEFORE COMMENCING WORK. THE CONTRACTOR IS RESPONSIBLE FOR AVOIDING DAMAGE TO IRRIGATION SYSTEMS WHERE POSSIBLE.

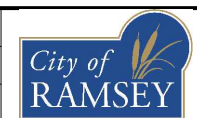
DATE	REVISION

I hereby certify that this plan, specification, or report was prepared by me or under my direct supervision and that I am a duly Licensed Professional Engineer under the laws of the State of Minnesota


 BRUCE WESTBY
 Date 4/4/19 Lic. No. 40116

DESIGNED BY:
JJF
DATE: 4/3/19

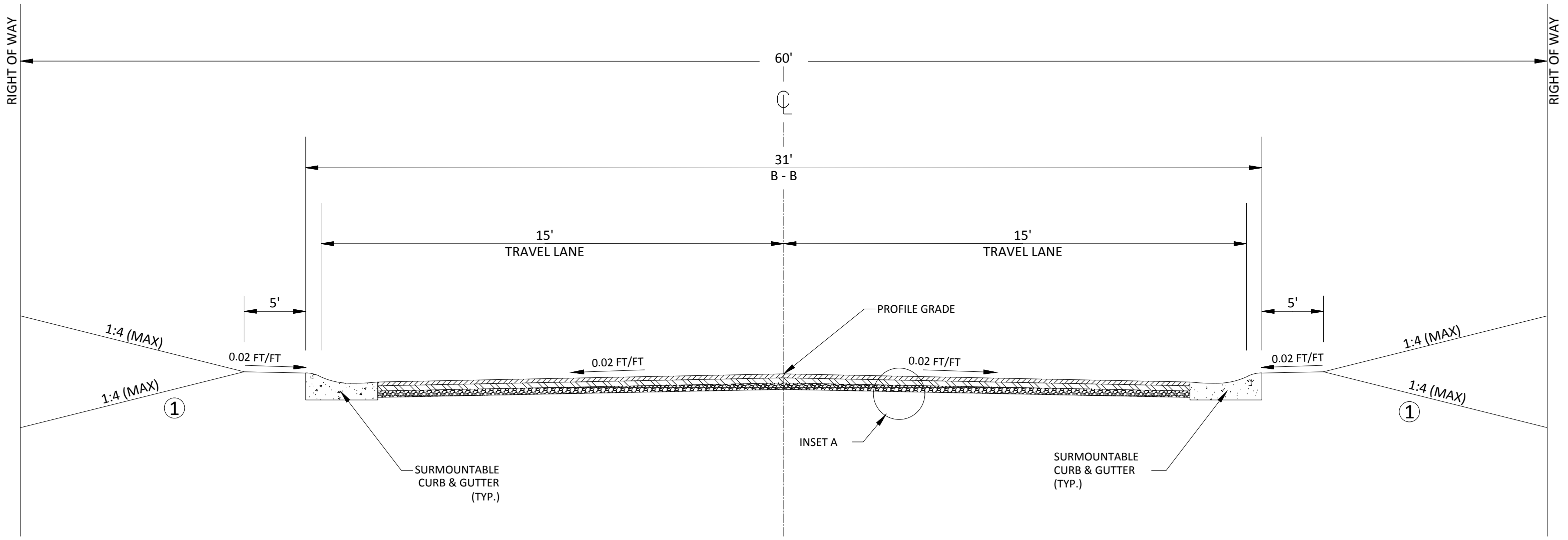
CHECKED BY:
BRW
FILE No. 19-03



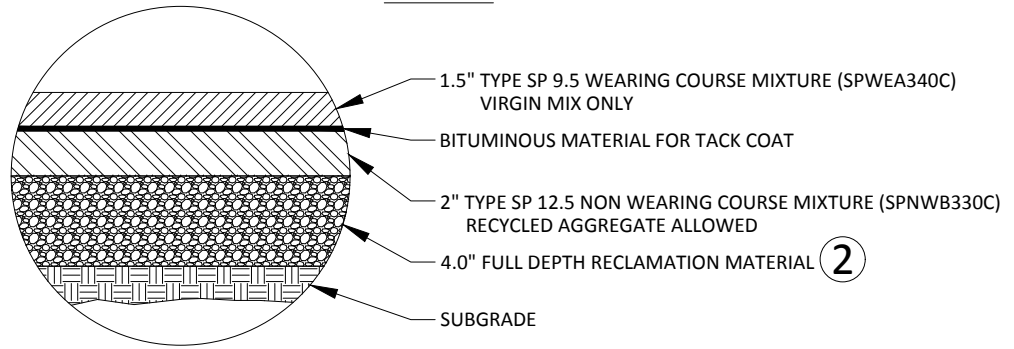
CITY OF RAMSEY
 7550 SUNWOOD DRIVE
 RAMSEY, MN 55303
 (763) 427-1410 FAX (763) 433-9898

STATEMENT OF ESTIMATED QUANTITIES

WOOD POND HILLS & CHESTNUT RIDGE STREET RECONSTRUCTIONS
 CITY PROJECT NO. 19-03
 CITY OF RAMSEY, MINNESOTA



INSET A:



REFERENCE NOTES:

- ① GRADE TO MATCH EXISTING GROUND. ESTABLISH TURF USING A MINIMUM OF 4" TOPSOIL AND SODDING TYPE LAWN. SEE CITY PLATE NO. ERO-6 FOR COMMON TOPSOIL BORROW.
- ② FULL DEPTH RECLAMATION MUST PASS CITY OF RAMSEY MODIFIED CLASS 5 AGGREGATE BASE GRADATION. SEE CITY PLATE NO. STR-26. MATERIAL SHALL BE SHAPED AND COMPACTED ACCORDING TO THE SPECIFIED DENSITY METHOD.

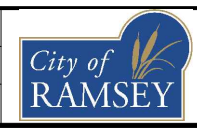
DATE	REVISION

I hereby certify that this plan, specification, or report was prepared by me or under my direct supervision and that I am a duly Licensed Professional Engineer under the laws of the State of Minnesota

Bruce Westby
 BRUCE WESTBY
 Date 4/4/19 Lic. No. 40116

DESIGNED BY: JJF
 DRAWN BY: JJF
 CHECKED BY: BRW

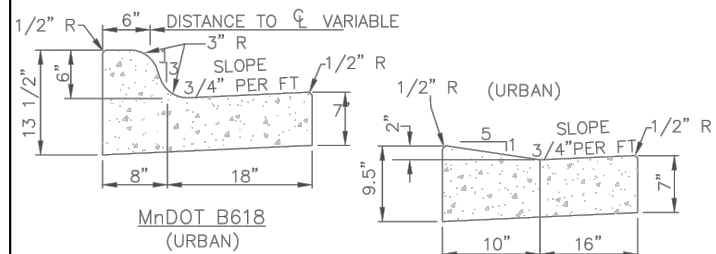
DATE: 4/3/19
 FILE No. 19-03



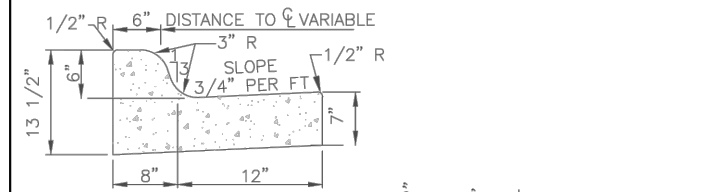
CITY OF RAMSEY
 7550 SUNWOOD DRIVE
 RAMSEY, MN 55303
 (763) 427-1410 FAX (763) 433-9898

TYPICAL SECTION

WOOD POND HILLS & CHESTNUT RIDGE STREET RECONSTRUCTIONS
 CITY PROJECT NO. 19-03
 CITY OF RAMSEY, MINNESOTA



DRIVEWAY FOR B618



SURMOUNTABLE

NOTES:

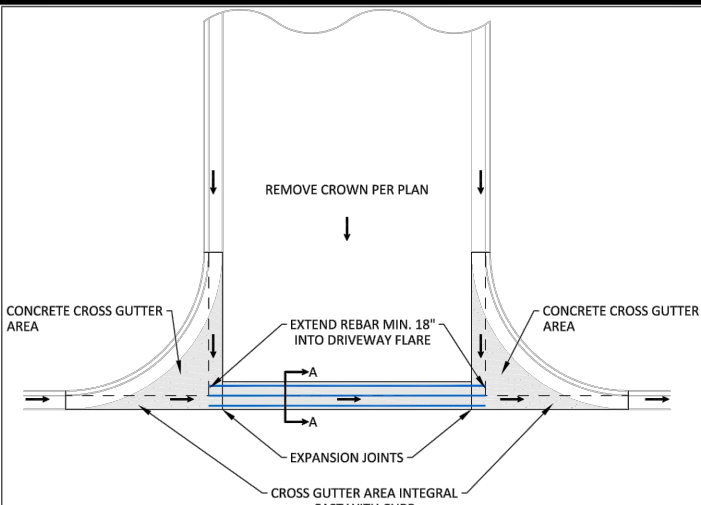
1. ON WEAR COURSE MILL THE EXISTING BITUMINOUS 1.5" BY 24" IN FRONT OF THE REPLACEMENT CURB.
2. ON BASE COURSE SAW CUT AND REMOVE EXISTING BITUMINOUS 18" IN FRONT OF THE REPLACEMENT CURB.

APPROVED:
1 - 2016

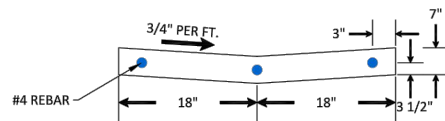


STANDARD DETAILS:
CURB AND GUTTER

CITY PLATE No. STR-1



PLAN



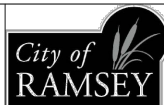
SECTION A-A

NOTE: NOT TO SCALE

NOTES:

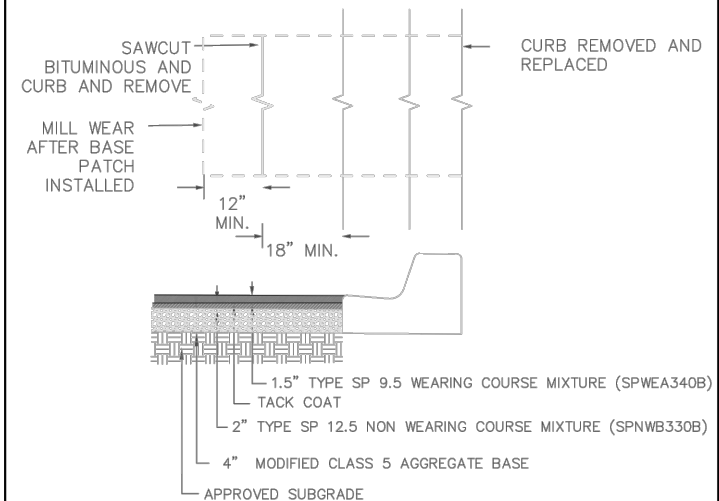
1. WITH REMOVAL OF EXISTING CURB AT A STREET, MILL BITUMINOUS TO A DEPTH OF 1.5" AND A WIDTH OF 18" IN EXISTING STREET.
2. TO BE USED WHENEVER CROSS DRAINAGE IS < 2%.
3. CONCRETE CURB AND GUTTER SHALL BE CAST INTEGRAL WITH CONCRETE CROSS GUTTER AREA.
4. CONCRETE CURB AND GUTTER SHALL BE PAID SEPARATELY FROM CONCRETE CROSS GUTTER AREA.

APPROVED:
3 - 2017



STANDARD DETAILS:
CROSS GUTTER

CITY PLATE No. STR-2



NOTES:

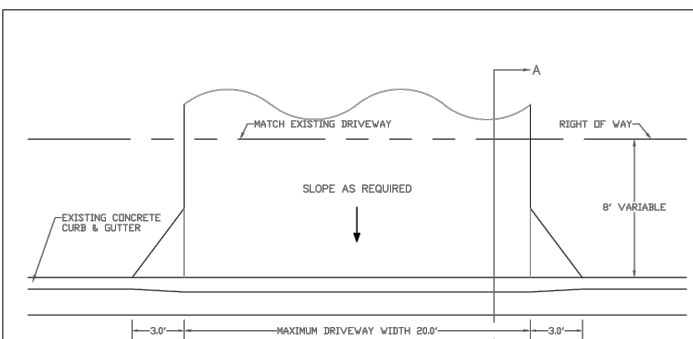
1. BITUMINOUS SHALL BE SAWCUT AND REMOVED AFTER CURB IS REPLACED.
2. CLASS 5 AND BITUMINOUS COURSES SHALL BE MECHANICALLY COMPACTED.
3. SEE CITY PLATE STR-26 FOR MODIFIED CLASS 5 SPECIFICATIONS.

APPROVED:
6 - 2016

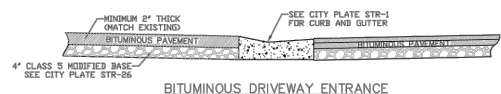
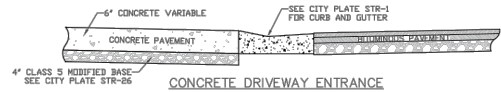


STANDARD DETAILS:
STREET PATCHING STANDARDS

CITY PLATE No. STR-25



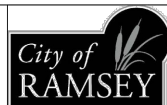
SECTION A-A



NOTES:

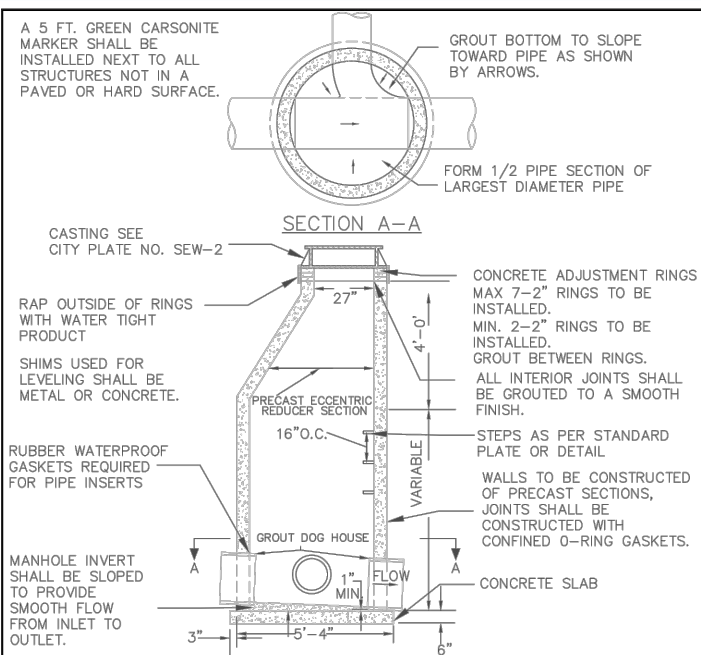
1. PANEL WIDTH SHALL NOT EXCEED 10 FT. WITHOUT A CENTERLINE CONSTRUCTION JOINT.
2. CONCRETE DRIVEWAY TO BE ONE COURSE CONCRETE PAVEMENT. (SEE SPECIAL PROVISIONS FOR CLASS OF CONCRETE.)
3. CONCRETE DRIVEWAYS TO BE 6" THICK.
4. 1/2" EXPANSION JOINT, 1/2" PREFORMED JOINT FILLER MATERIAL, AASHTO M 213 (REQUIRED WHEN 2 CONCRETE AREAS ARE POURED SEPARATELY.)
5. BITUMINOUS DRIVEWAYS MINIMUM 2" THICK, MATCH EXISTING BITUMINOUS PAVEMENT THICKNESS.

APPROVED:
1 - 2016



STANDARD DETAILS:
RESIDENTIAL DRIVEWAY - NO SIDEWALK

CITY PLATE No. STR-30

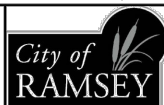


STANDARD DETAIL

NOTES:

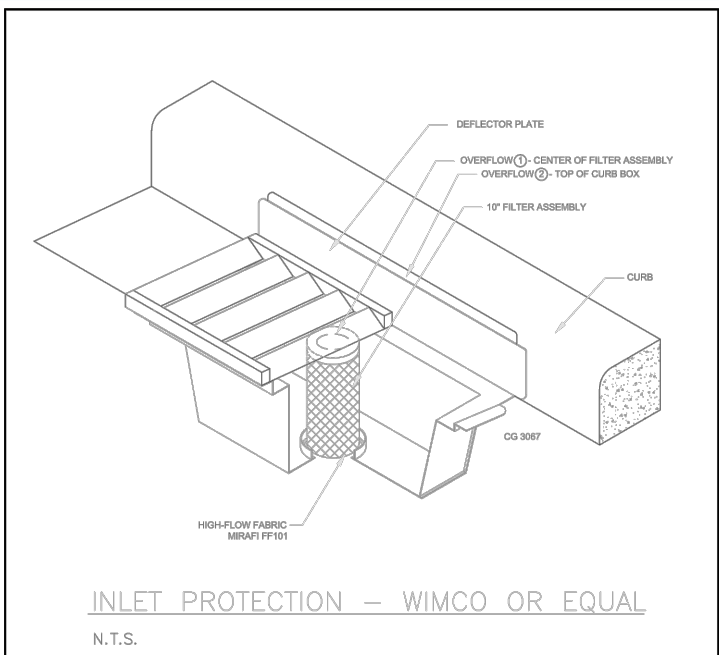
1. A 10 GAGE SOLID COPPER TRACER WIRE IS REQUIRED WITH ALL SEWER LINES.
2. CONDUCTIVITY IS REQUIRED ON ALL TRACER WIRE.
3. TRACER WIRES ARE TO END IN STRUCTURES, AT FINISHED GRADE ON ALL SERVICES AND STUBS.
4. 6" BASE FOR ALL MANHOLES LESS THAN 14 FT. OF DEPTH, INCREASE BASE THICKNESS 2" PER 6 FT. OF DEPTH BEYOND 14 FT.
5. 5" PRECAST BASE MAY BE USED FOR MANHOLES LESS THAN 14 FT. DEEP.
6. ALL INVERTS TO BE 0.10' ABOVE OUTLET.

APPROVED:
1 - 2016



STANDARD DETAILS:
SANITARY MANHOLE

CITY PLATE No. SEW-1



INLET PROTECTION - WIMCO OR EQUAL

N.T.S.

NOTE:

- THIS INLET PROTECTION SHALL BE USED IMMEDIATELY FOLLOWING CURB & GUTTER CONSTRUCTION. INLET PROTECTION SHALL REMAIN INSTALLED AND MAINTAINED UNTIL ALL HOME CONSTRUCTION IS COMPLETE.

APPROVED:
1 - 2016



STANDARD DETAILS:
INLET PROTECTION

CITY PLATE No. ERO-2

DATE	REVISION
Apr 03, 2019 - 3:35pm	
G:\Engineering\AutoCad Dwg\Projects N-Z\Wood Pond Hills & Chestnut Ridge 19-03\Plan Drawings\19-03 Details.dwg	

I hereby certify that this plan, specification, or report was prepared by me or under my direct supervision and that I am a duly Licensed Professional Engineer under the laws of the State of Minnesota

Bruce Westby
BRUCE WESTBY
Date 4/4/19 Lic. No. 40116

DESIGNED BY: JJF
DRAWN BY: JJF
CHECKED BY: BRW
DATE: 4/3/19
FILE No. 19-03

CITY OF RAMSEY
7550 SUNWOOD DRIVE
RAMSEY, MN 55303
(763) 427-1410 FAX (763) 433-9898

DETAILS

WOOD POND HILLS & CHESTNUT RIDGE STREET RECONSTRUCTIONS
CITY PROJECT NO. 19-03
CITY OF RAMSEY, MINNESOTA

TABLE A MODIFIED CLASS 5 SPECIFICATIONS

% PASSING

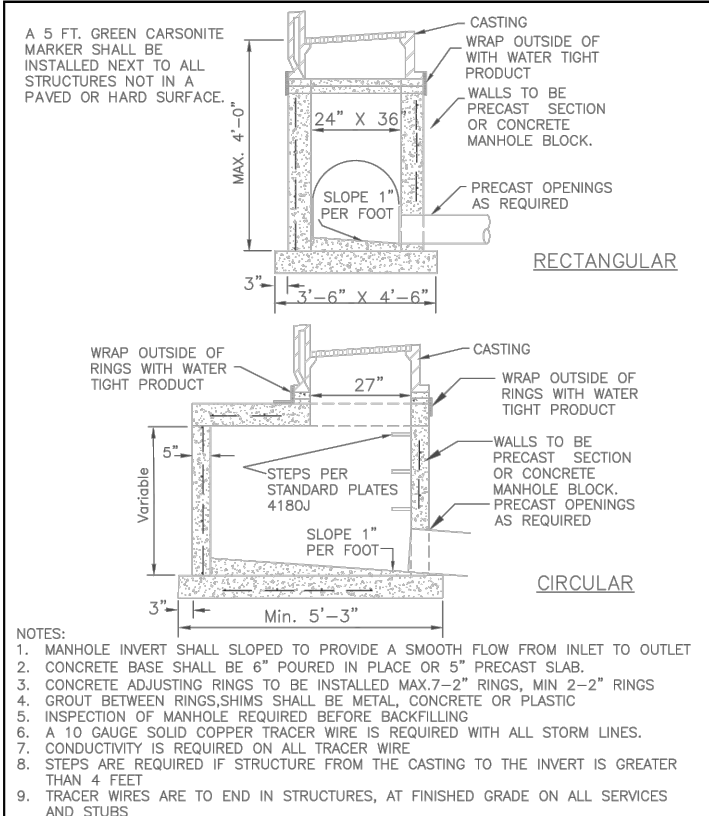
1"	100
3/4"	90 - 100
3/8"	50 - 80
No.4	35 - 70
No.10	20 - 60
No.40	10 - 35
No.200	5 - 10

- NOTES:
1. THE AGGREGATE BASE CONSTRUCTION WILL BE ACCEPTED FOR PAYMENT IN ACCORDANCE WITH THE PROVISIONS IN TABLE A.
 2. IF THE AGGREGATE BASE FAILS TO MEET THE REQUIREMENTS OF TABLE A THE MATERIAL CAN BE CORRECTED IN PLACE OR REMOVED AND REPLACED WITH MATERIAL THAT MEET THE REQUIREMENTS OF TABLE A.
 3. IN THE EVENT THAT RECYCLED MATERIAL IS USE IT MUST MEET MNDOT REQUIREMENTS FOR RECYCLED BASE.

APPROVED:
2 - 2003



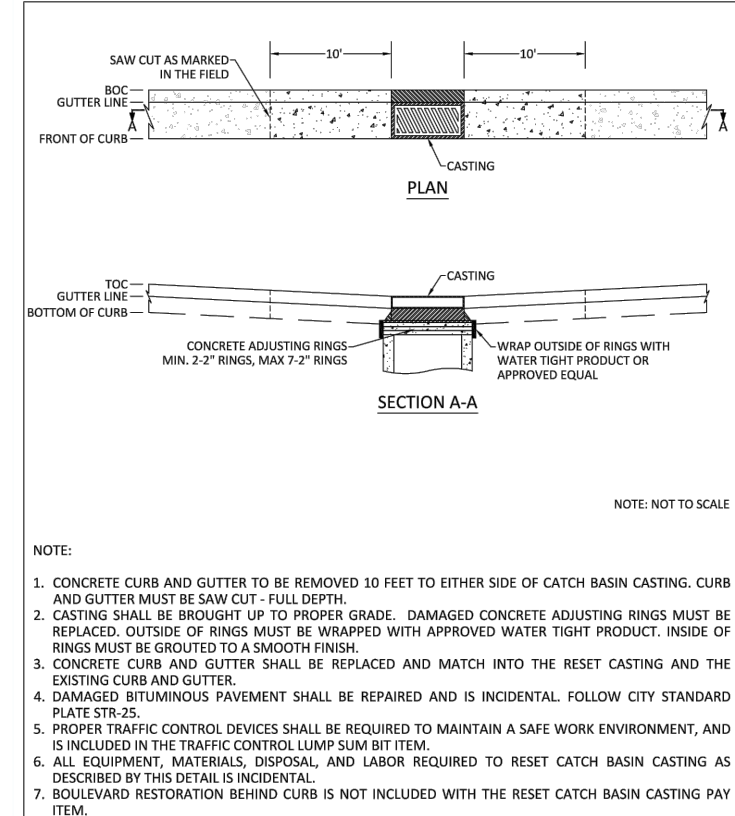
STANDARD DETAILS:
MODIFIED CLASS 5
SPECIFICATIONS
CITY PLATE No. STR-26



APPROVED:
4 - 2007



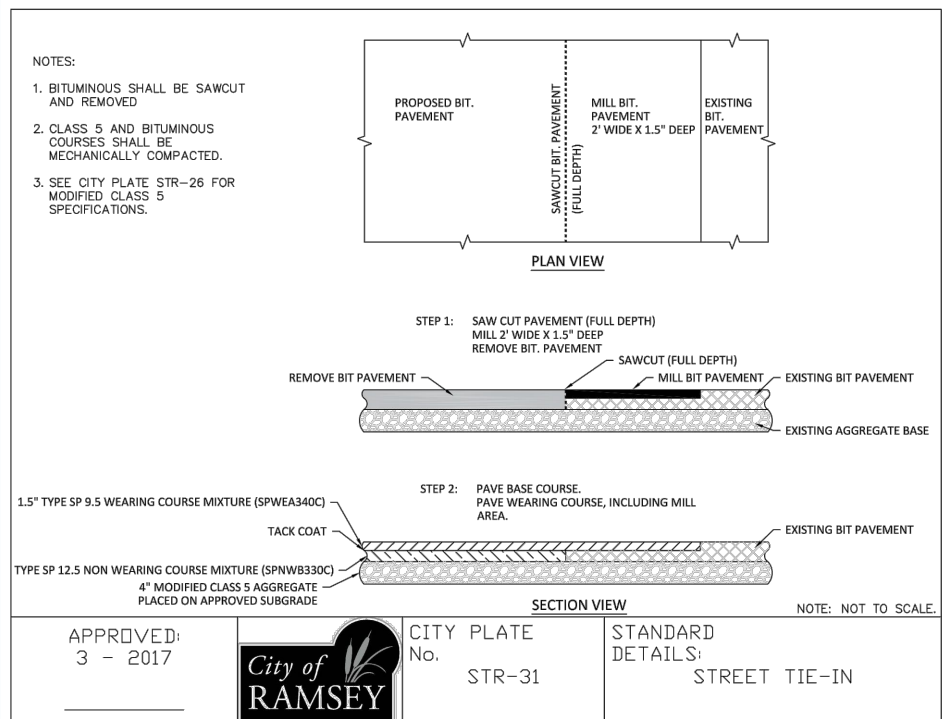
STANDARD DETAILS:
CATCH BASIN
CITY PLATE No. STO-1



APPROVED:
3 - 2017



STANDARD DETAILS:
RESET CATCH BASIN CASTING
CITY PLATE No. STO-13



APPROVED:
3 - 2017



CITY PLATE No. STR-31
STANDARD DETAILS:
STREET TIE-IN

MNDOT 2016 SPEC

REQUIREMENT	RANGE	TEST METHOD
MATERIAL PASSING THE 3/4 IN [19MM]	100%	ASTM D 422
MATERIAL PASSING NO. 4 [4.75MM]	>85%	-
CLAY	5% - 35%	ASTM D 422
SILT	5% - 70%	ASTM D 422
SAND	10% - 75%	ASTM D 422
ORGANIC MATTER	3% - 15%	ASTM D 2974
pH	6.1-7.8	ASTM G 51

NOTE:

1. INSTALLATION OF 4" OF TOPSOIL MEETING MNDOT SPECIFICATION 3877A COMMON TOPSOIL BORROW, MAY BE REQUIRED ACROSS ALL DISTURBED AREAS.
2. A SOIL CERTIFICATION FROM A GEOTECHNICAL FIRM MUST BE PROVIDED VERIFYING THE TOPSOIL MEETS SPECIFICATION ALONG WITH LOAD TICKETS TO VERIFY THE SOURCE OF MATERIAL AND QUANTITY.
3. TOPSOIL MUST COME FROM A CITY APPROVED SOURCE.

APPROVED:
1 - 2016



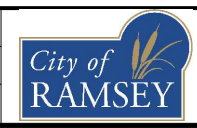
CITY PLATE No. ERO-6
STANDARD DETAILS:
TOPSOIL REQUIREMENTS

DATE	REVISION
Apr 03, 2019 - 3:35pm	G:\Engineering\AutoCad Dwg\Projects N-Z\Wood Pond Hills & Chestnut Ridge 19-03\Plan Drawings\19-03 Details.dwg

I hereby certify that this plan, specification, or report was prepared by me or under my direct supervision and that I am a duly Licensed Professional Engineer under the laws of the State of Minnesota

Bruce Westby
BRUCE WESTBY
Date 4/4/19 Lic. No. 40116

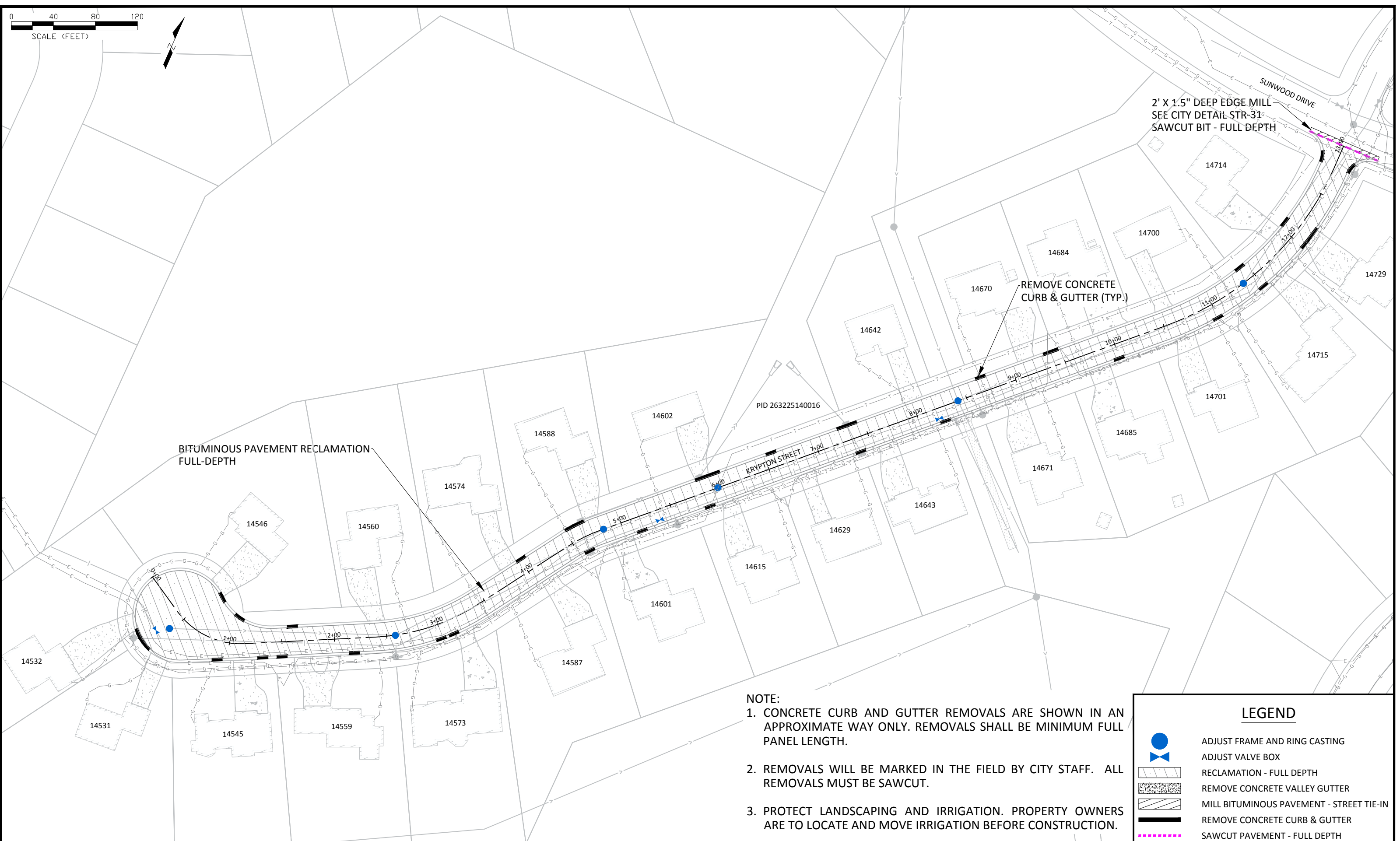
DESIGNED BY: JJF
DRAWN BY: JJF
CHECKED BY: BRW
DATE: 4/3/19
FILE No. 19-03



CITY OF RAMSEY
7550 SUNWOOD DRIVE
RAMSEY, MN 55303
(763) 427-1410 FAX (763) 433-9898

DETAILS

WOOD POND HILLS & CHESTNUT RIDGE STREET RECONSTRUCTIONS
CITY PROJECT NO. 19-03
CITY OF RAMSEY, MINNESOTA



- NOTE:**
1. CONCRETE CURB AND GUTTER REMOVALS ARE SHOWN IN AN APPROXIMATE WAY ONLY. REMOVALS SHALL BE MINIMUM FULL PANEL LENGTH.
 2. REMOVALS WILL BE MARKED IN THE FIELD BY CITY STAFF. ALL REMOVALS MUST BE SAWCUT.
 3. PROTECT LANDSCAPING AND IRRIGATION. PROPERTY OWNERS ARE TO LOCATE AND MOVE IRRIGATION BEFORE CONSTRUCTION.

LEGEND

- ADJUST FRAME AND RING CASTING
- ADJUST VALVE BOX
- RECLAMATION - FULL DEPTH
- REMOVE CONCRETE VALLEY GUTTER
- MILL BITUMINOUS PAVEMENT - STREET TIE-IN
- REMOVE CONCRETE CURB & GUTTER
- SAWCUT PAVEMENT - FULL DEPTH

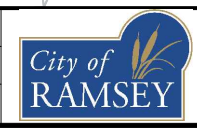
DATE	REVISION

I hereby certify that this plan, specification, or report was prepared by me or under my direct supervision and that I am a duly Licensed Professional Engineer under the laws of the State of Minnesota

Bruce Westby
 BRUCE WESTBY
 Date 4/4/19 Lic. No. 40116

DESIGNED BY: JJF
 DRAWN BY: JJF
 CHECKED BY: BRW

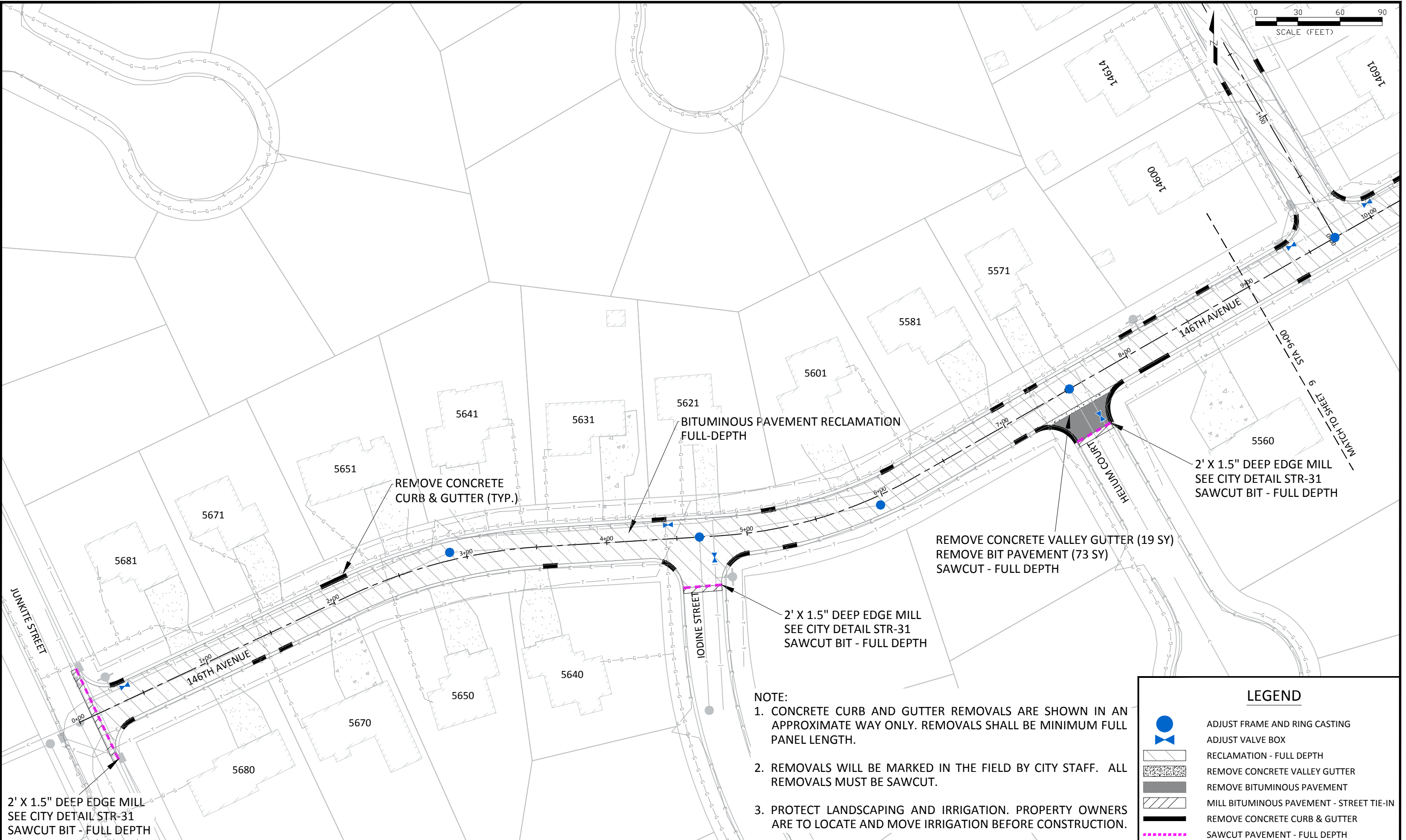
DATE: 4/3/19
 FILE No. 19-03



CITY OF RAMSEY
 7550 SUNWOOD DRIVE
 RAMSEY, MN 55303
 (763) 427-1410 FAX (763) 433-9898

EXISTING CONDITIONS AND REMOVALS

WOOD POND HILLS & CHESTNUT RIDGE STREET RECONSTRUCTIONS
 CITY PROJECT NO. 19-03
 CITY OF RAMSEY, MINNESOTA



- NOTE:**
1. CONCRETE CURB AND GUTTER REMOVALS ARE SHOWN IN AN APPROXIMATE WAY ONLY. REMOVALS SHALL BE MINIMUM FULL PANEL LENGTH.
 2. REMOVALS WILL BE MARKED IN THE FIELD BY CITY STAFF. ALL REMOVALS MUST BE SAWCUT.
 3. PROTECT LANDSCAPING AND IRRIGATION. PROPERTY OWNERS ARE TO LOCATE AND MOVE IRRIGATION BEFORE CONSTRUCTION.

LEGEND

- ADJUST FRAME AND RING CASTING
- ADJUST VALVE BOX
- RECLAMATION - FULL DEPTH
- REMOVE CONCRETE VALLEY GUTTER
- REMOVE BITUMINOUS PAVEMENT
- MILL BITUMINOUS PAVEMENT - STREET TIE-IN
- REMOVE CONCRETE CURB & GUTTER
- SAWCUT PAVEMENT - FULL DEPTH

2' X 1.5" DEEP EDGE MILL
SEE CITY DETAIL STR-31
SAWCUT BIT - FULL DEPTH

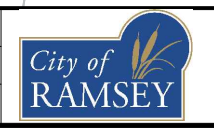
DATE	REVISION

I hereby certify that this plan, specification, or report was prepared by me or under my direct supervision and that I am a duly Licensed Professional Engineer under the laws of the State of Minnesota

Bruce Westby
BRUCE WESTBY
Date 4/4/19 Lic. No. 40116

DESIGNED BY: JJF
DRAWN BY: JJF
CHECKED BY: BRW

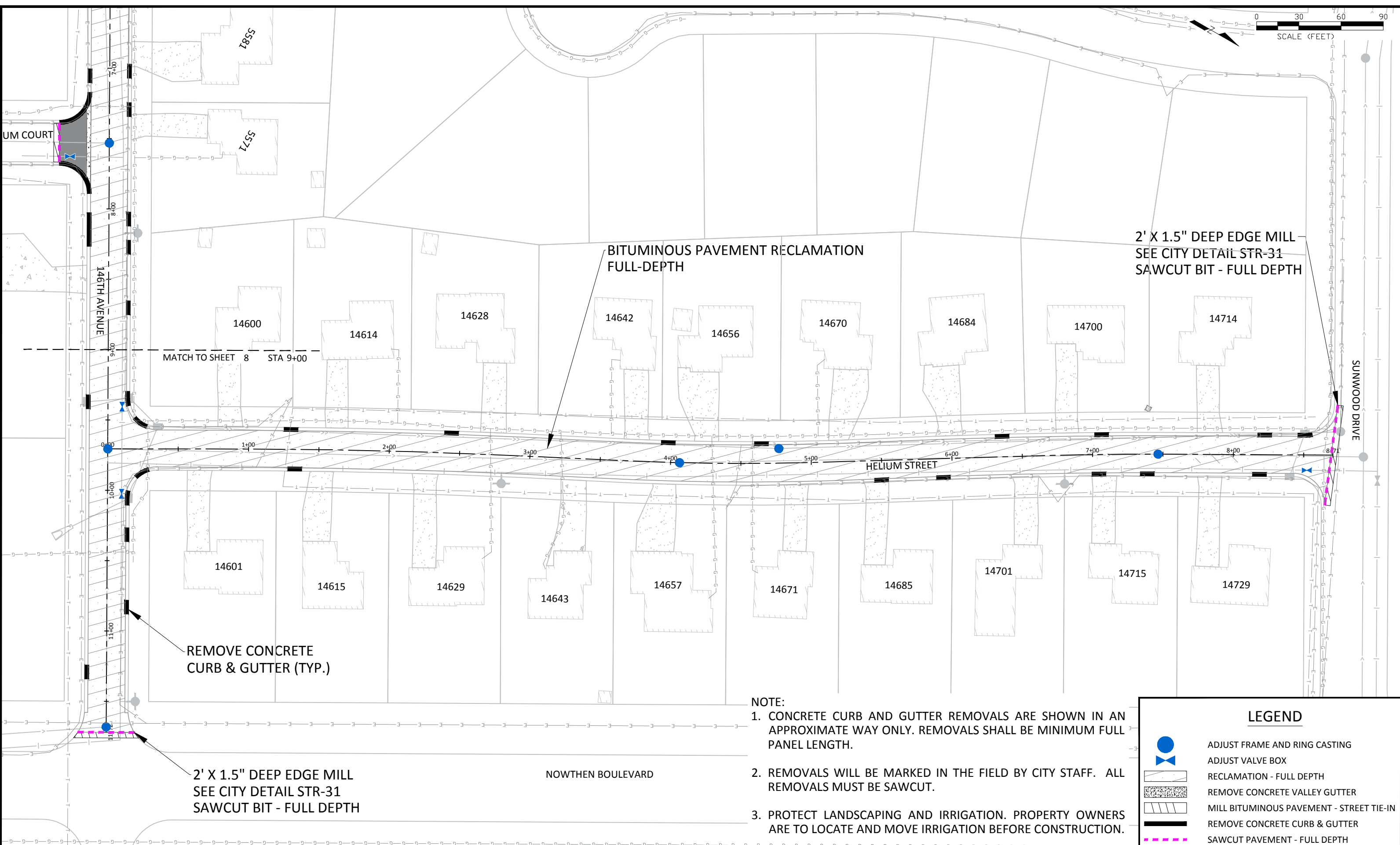
DATE: 4/3/19
FILE No. 19-03



CITY OF RAMSEY
7550 SUNWOOD DRIVE
RAMSEY, MN 55303
(763) 427-1410 FAX (763) 433-9898

EXISTING CONDITIONS AND REMOVALS

WOOD POND HILLS & CHESTNUT RIDGE STREET RECONSTRUCTIONS
CITY PROJECT NO. 19-03
CITY OF RAMSEY, MINNESOTA



- NOTE:**
1. CONCRETE CURB AND GUTTER REMOVALS ARE SHOWN IN AN APPROXIMATE WAY ONLY. REMOVALS SHALL BE MINIMUM FULL PANEL LENGTH.
 2. REMOVALS WILL BE MARKED IN THE FIELD BY CITY STAFF. ALL REMOVALS MUST BE SAWCUT.
 3. PROTECT LANDSCAPING AND IRRIGATION. PROPERTY OWNERS ARE TO LOCATE AND MOVE IRRIGATION BEFORE CONSTRUCTION.

LEGEND

- ADJUST FRAME AND RING CASTING
- ADJUST VALVE BOX
- RECLAMATION - FULL DEPTH
- REMOVE CONCRETE VALLEY GUTTER
- MILL BITUMINOUS PAVEMENT - STREET TIE-IN
- REMOVE CONCRETE CURB & GUTTER
- SAWCUT PAVEMENT - FULL DEPTH

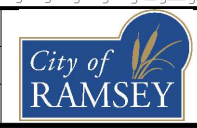
DATE	REVISION
Apr 03, 2019 - 3:24pm	
G:\Engineering\AutoCad Dwg\Projects\N-Z\Wood Pond Hills & Chestnut Ridge 19-03\Plan Drawings\19-03 Removals.dwg	

I hereby certify that this plan, specification, or report was prepared by me or under my direct supervision and that I am a duly Licensed Professional Engineer under the laws of the State of Minnesota

Bruce Westby
BRUCE WESTBY
Date 4/4/19 Lic. No. 40116

DESIGNED BY: JJF
DRAWN BY: JJF
CHECKED BY: BRW

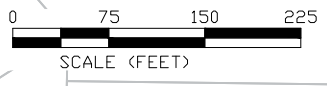
DATE: 4/3/19
FILE No. 19-03



CITY OF RAMSEY
7550 SUNWOOD DRIVE
RAMSEY, MN 55303
(763) 427-1410 FAX (763) 433-9898

EXISTING CONDITIONS AND REMOVALS

WOOD POND HILLS & CHESTNUT RIDGE STREET RECONSTRUCTIONS
CITY PROJECT NO. 19-03
CITY OF RAMSEY, MINNESOTA



LEGEND

INLET PROTECTION

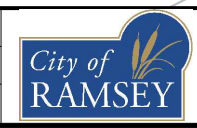
DATE	REVISION

I hereby certify that this plan, specification, or report was prepared by me or under my direct supervision and that I am a duly Licensed Professional Engineer under the laws of the State of Minnesota.

Bruce Westby
BRUCE WESTBY
Date 4/4/19 Lic. No. 40116

DESIGNED BY: JJF
DRAWN BY: JJF
CHECKED BY: BRW

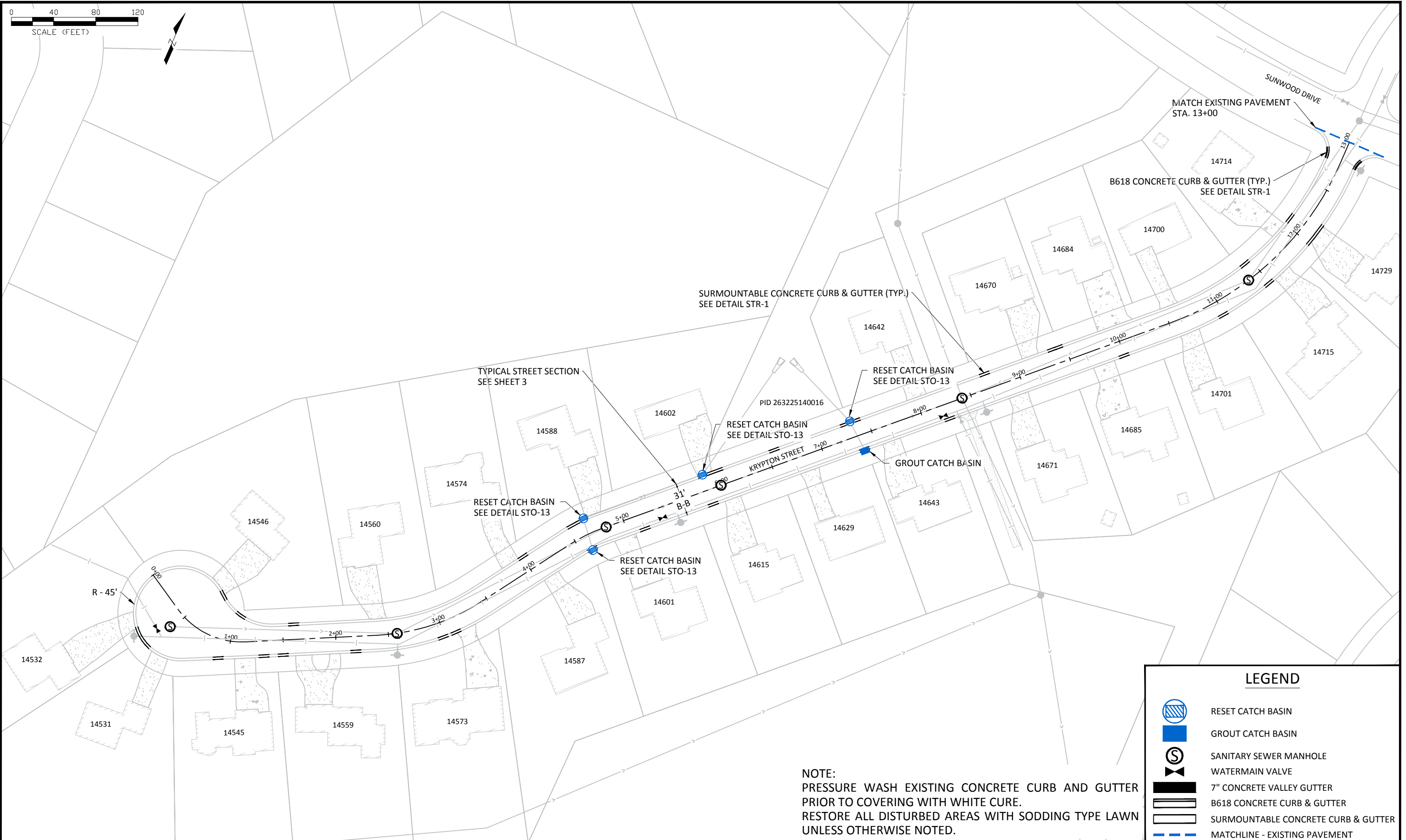
DATE: 4/3/19
FILE No. 19-03



CITY OF RAMSEY
7550 SUNWOOD DRIVE
RAMSEY, MN 55303
(763) 427-1410 FAX (763) 433-9898

EROSION CONTROL

WOOD POND HILLS & CHESTNUT RIDGE STREET RECONSTRUCTIONS
CITY PROJECT NO. 19-03
CITY OF RAMSEY, MINNESOTA



LEGEND

- RESET CATCH BASIN
- GROUT CATCH BASIN
- SANITARY SEWER MANHOLE
- WATERMAIN VALVE
- 7" CONCRETE VALLEY GUTTER
- B618 CONCRETE CURB & GUTTER
- SURMOUNTABLE CONCRETE CURB & GUTTER
- MATCHLINE - EXISTING PAVEMENT

NOTE:
 PRESSURE WASH EXISTING CONCRETE CURB AND GUTTER PRIOR TO COVERING WITH WHITE CURE.
 RESTORE ALL DISTURBED AREAS WITH SODDING TYPE LAWN UNLESS OTHERWISE NOTED.

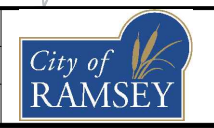
DATE	REVISION

I hereby certify that this plan, specification, or report was prepared by me or under my direct supervision and that I am a duly Licensed Professional Engineer under the laws of the State of Minnesota.

Bruce Westby
 BRUCE WESTBY
 Date 4/4/19 Lic. No. 40116

DESIGNED BY: JJF
 DRAWN BY: JJF
 CHECKED BY: BRW

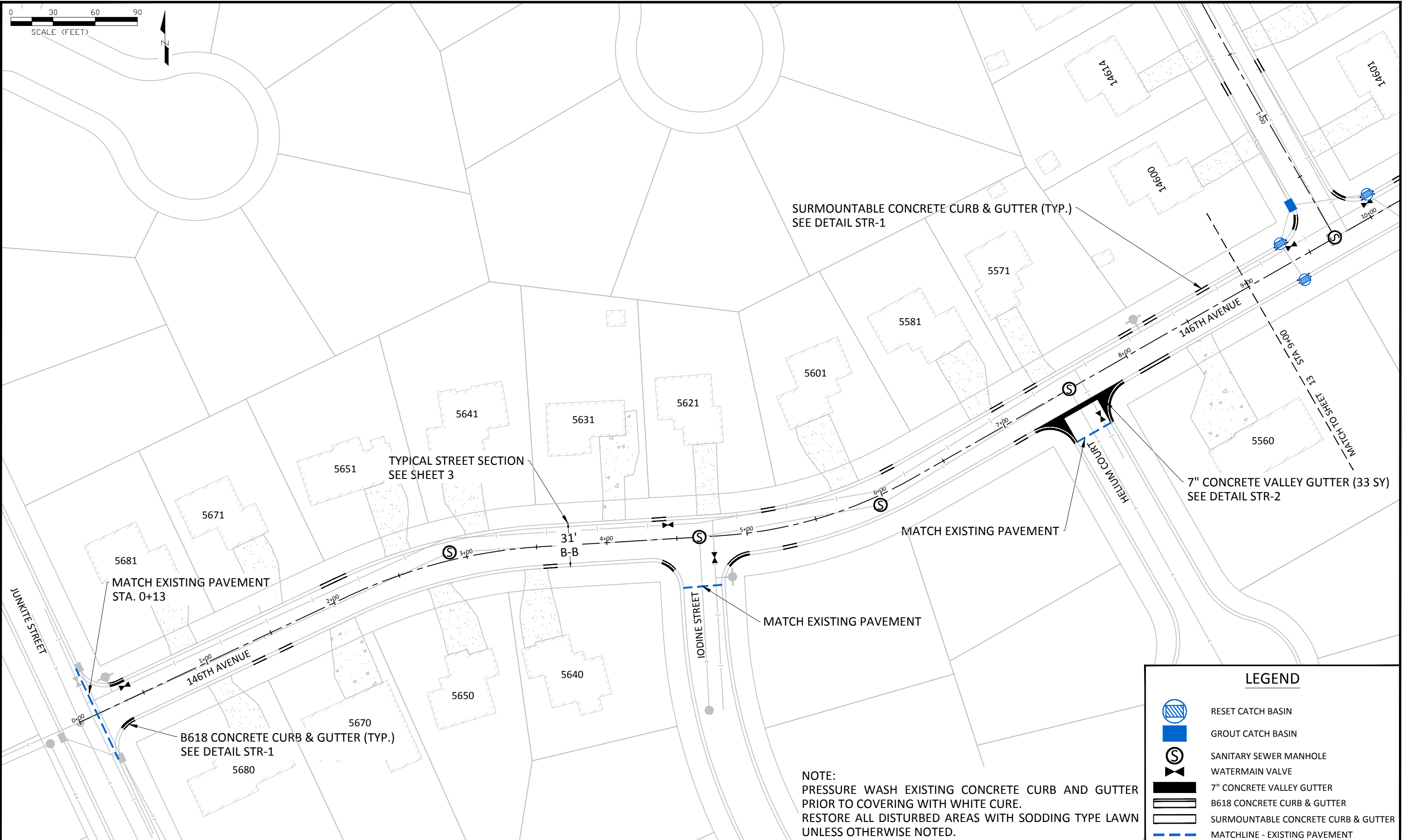
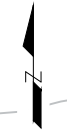
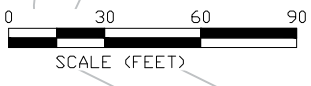
DATE: 4/3/19
 FILE No. 19-03



CITY OF RAMSEY
 7550 SUNWOOD DRIVE
 RAMSEY, MN 55303
 (763) 427-1410 FAX (763) 433-9898

STREET CONSTRUCTION

WOOD POND HILLS & CHESTNUT RIDGE STREET RECONSTRUCTIONS
 CITY PROJECT NO. 19-03
 CITY OF RAMSEY, MINNESOTA



SURMOUNTABLE CONCRETE CURB & GUTTER (TYP.)
SEE DETAIL STR-1

TYPICAL STREET SECTION
SEE SHEET 3

7" CONCRETE VALLEY GUTTER (33 SY)
SEE DETAIL STR-2

MATCH EXISTING PAVEMENT

MATCH EXISTING PAVEMENT
STA. 0+13

MATCH EXISTING PAVEMENT

B618 CONCRETE CURB & GUTTER (TYP.)
SEE DETAIL STR-1

LEGEND

- RESET CATCH BASIN
- GROUT CATCH BASIN
- SANITARY SEWER MANHOLE
- WATERMAIN VALVE
- 7" CONCRETE VALLEY GUTTER
- B618 CONCRETE CURB & GUTTER
- SURMOUNTABLE CONCRETE CURB & GUTTER
- MATCHLINE - EXISTING PAVEMENT

NOTE:
PRESSURE WASH EXISTING CONCRETE CURB AND GUTTER
PRIOR TO COVERING WITH WHITE CURE.
RESTORE ALL DISTURBED AREAS WITH SODDING TYPE LAWN
UNLESS OTHERWISE NOTED.

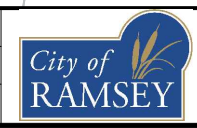
DATE	REVISION
Apr 03, 2019 - 3:35pm	

I hereby certify that this plan, specification, or report was prepared by me or under my direct supervision and that I am a duly Licensed Professional Engineer under the laws of the State of Minnesota

Bruce Westby
BRUCE WESTBY
Date 4/4/19 Lic. No. 40116

DESIGNED BY: JJF
DRAWN BY: JJF
CHECKED BY: BRW

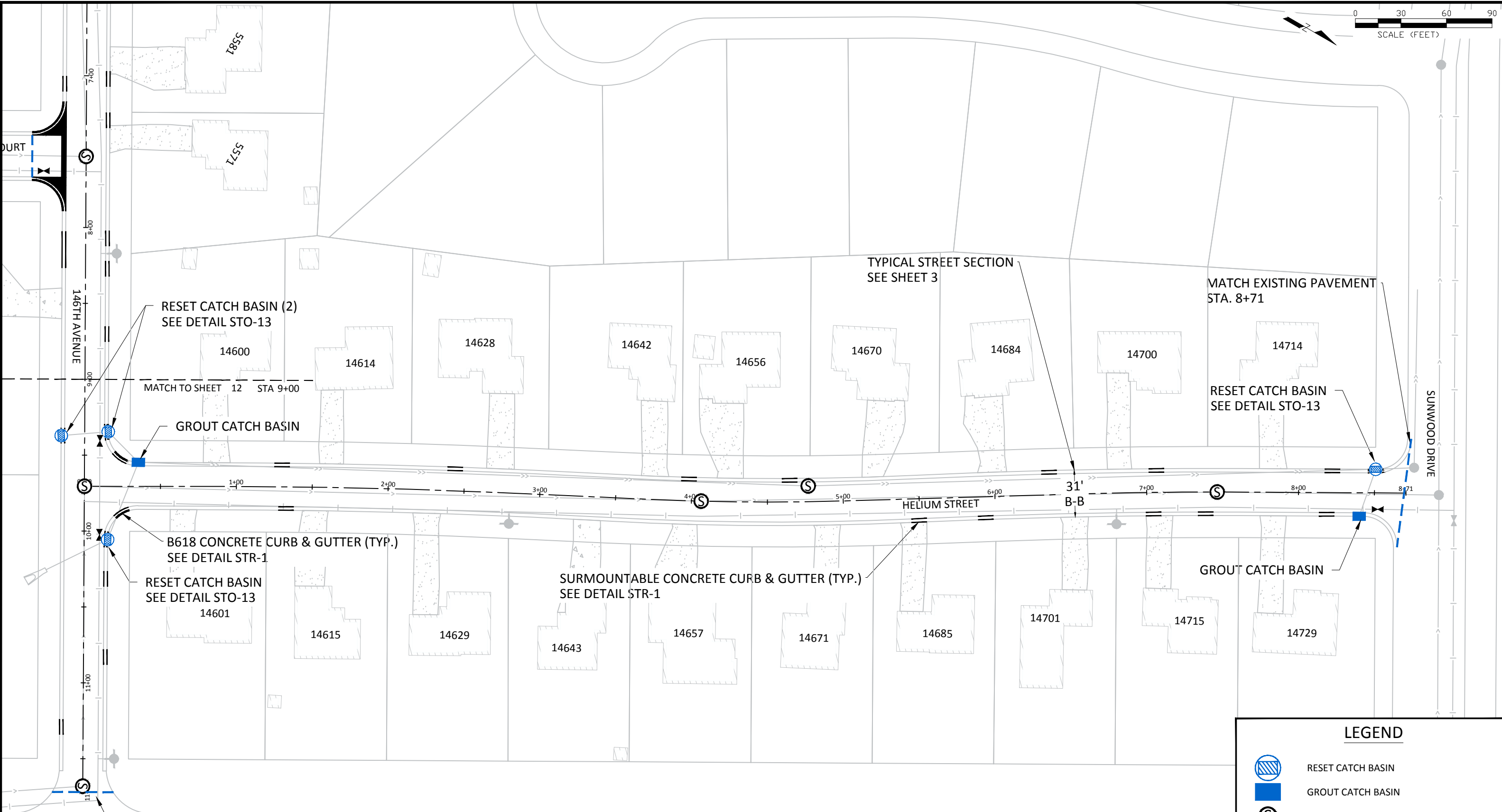
DATE: 4/3/19
FILE No. 19-03



CITY OF RAMSEY
7550 SUNWOOD DRIVE
RAMSEY, MN 55303
(763) 427-1410 FAX (763) 433-9898

STREET CONSTRUCTION

WOOD POND HILLS & CHESTNUT RIDGE STREET RECONSTRUCTIONS
CITY PROJECT NO. 19-03
CITY OF RAMSEY, MINNESOTA



LEGEND

- RESET CATCH BASIN
- GROUT CATCH BASIN
- SEWER MANHOLE
- WATERMAIN VALVE
- 7" CONCRETE VALLEY GUTTER
- B618 CONCRETE CURB & GUTTER
- SURMOUNTABLE CONCRETE CURB & GUTTER
- MATCHLINE - EXISTING PAVEMENT

NOTE:
PRESSURE WASH EXISTING CONCRETE CURB AND GUTTER PRIOR TO COVERING WITH WHITE CURE.
RESTORE ALL DISTURBED AREAS WITH SODDING TYPE LAWN UNLESS OTHERWISE NOTED.

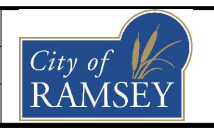
DATE	REVISION
Apr 03, 2019 - 3:35pm	

I hereby certify that this plan, specification, or report was prepared by me or under my direct supervision and that I am a duly Licensed Professional Engineer under the laws of the State of Minnesota

Bruce Westby
BRUCE WESTBY
Date 4/4/19 Lic. No. 40116

DESIGNED BY: JJF
DRAWN BY: JJF
CHECKED BY: BRW

DATE: 4/3/19
FILE No. 19-03



CITY OF RAMSEY
7550 SUNWOOD DRIVE
RAMSEY, MN 55303
(763) 427-1410 FAX (763) 433-9898

STREET CONSTRUCTION

WOOD POND HILLS & CHESTNUT RIDGE STREET RECONSTRUCTIONS
CITY PROJECT NO. 19-03
CITY OF RAMSEY, MINNESOTA