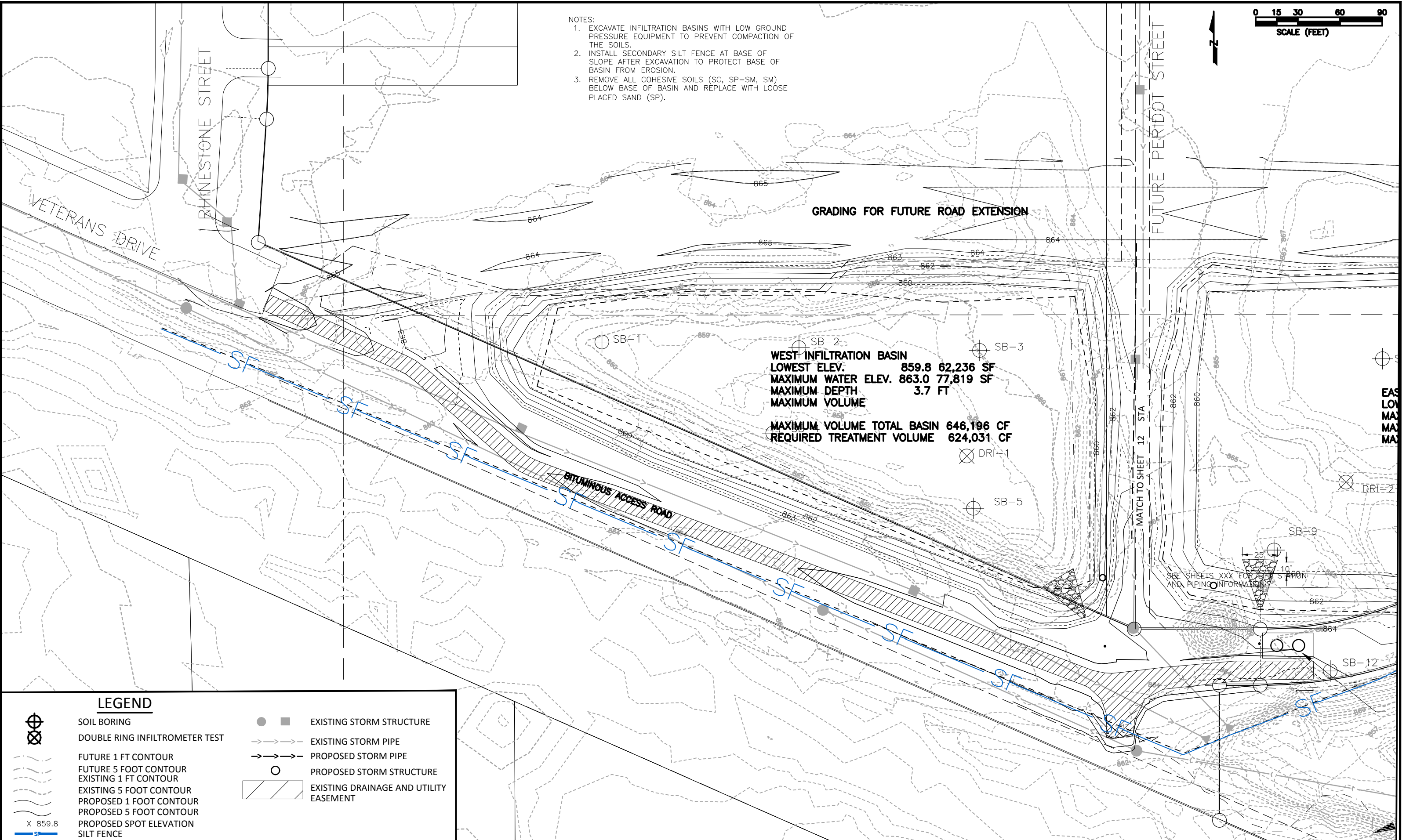




- NOTES:
- EXCAVATE INFILTRATION BASINS WITH LOW GROUND PRESSURE EQUIPMENT TO PREVENT COMPACTION OF THE SOILS.
  - INSTALL SECONDARY SILT FENCE AT BASE OF SLOPE AFTER EXCAVATION TO PROTECT BASE OF BASIN FROM EROSION.
  - REMOVE ALL COHESIVE SOILS (SC, SP-SM, SM) BELOW BASE OF BASIN AND REPLACE WITH LOOSE PLACED SAND (SP).



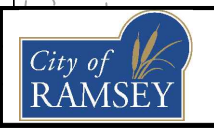
LEGEND	
	SOIL BORING
	DOUBLE RING INFILTRMETER TEST
	FUTURE 1 FT CONTOUR
	FUTURE 5 FOOT CONTOUR
	EXISTING 1 FT CONTOUR
	EXISTING 5 FOOT CONTOUR
	PROPOSED 1 FOOT CONTOUR
	PROPOSED 5 FOOT CONTOUR
	PROPOSED SPOT ELEVATION
	SILT FENCE
	EXISTING STORM STRUCTURE
	EXISTING STORM PIPE
	PROPOSED STORM PIPE
	PROPOSED STORM STRUCTURE
	EXISTING DRAINAGE AND UTILITY EASEMENT

DATE	REVISION

I hereby certify that this plan, specification, or report was prepared by me or under my direct supervision and that I am a duly Licensed Professional Engineer under the laws of the State of Minnesota

LEONARD LINTON  
 Date 5/08/19 Lic. No. 21112

DESIGNED BY: LLL	DATE: 5/08/19
DRAWN BY: LLL	FILE No. 18-09
CHECKED BY: LLL	



CITY OF RAMSEY  
 7550 SUNWOOD DRIVE  
 RAMSEY, MN 55303  
 (763) 427-1410 FAX (763) 433-9898

GRADING PLAN WEST

COR INFILTRATION BASIN IMPROVEMENTS  
 CITY PROJECT NO. 18-09  
 CITY OF RAMSEY, MINNESOTA