

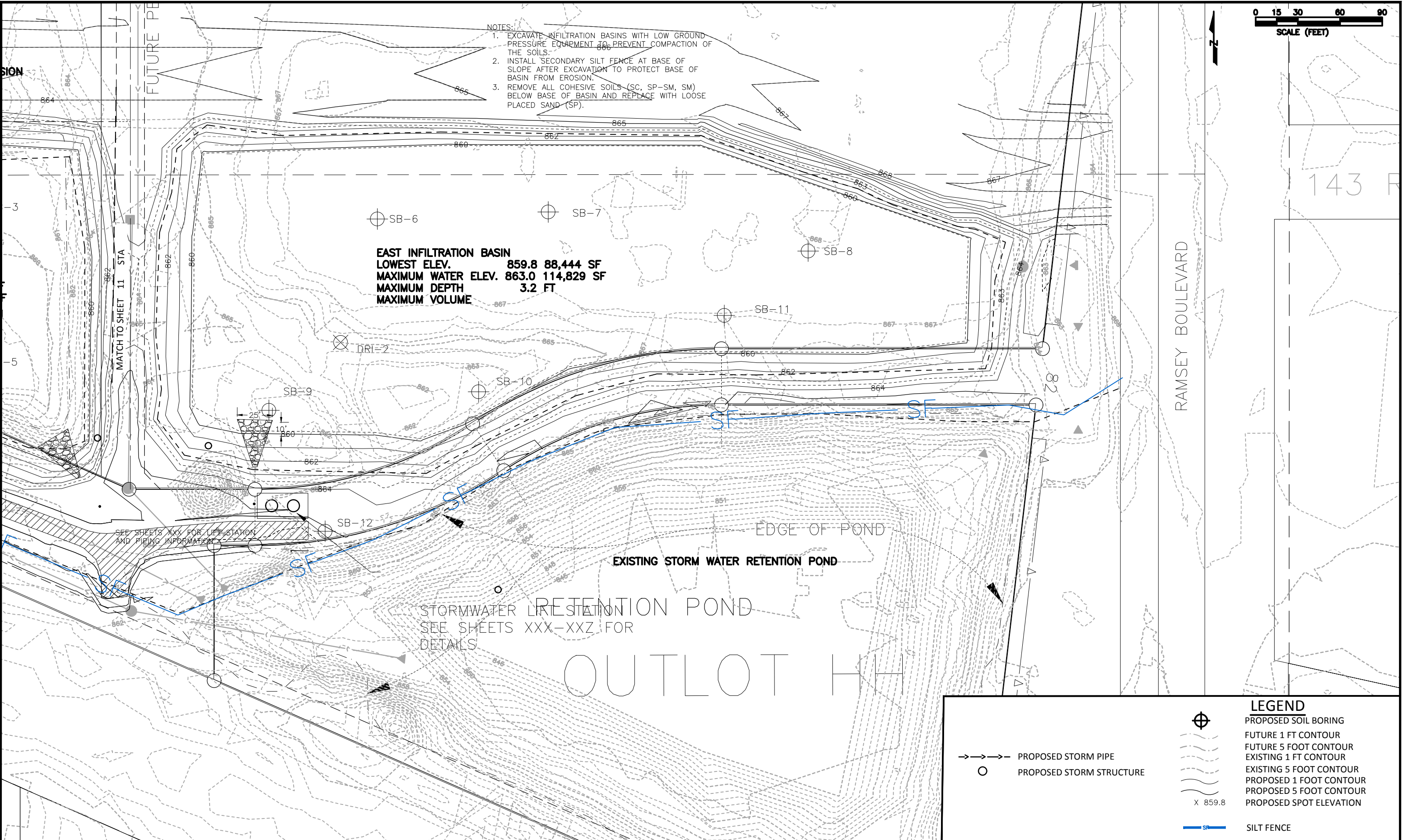


- NOTES:
1. EXCAVATE INFILTRATION BASINS WITH LOW GROUND PRESSURE EQUIPMENT TO PREVENT COMPACTION OF THE SOILS.
  2. INSTALL SECONDARY SILT FENCE AT BASE OF SLOPE AFTER EXCAVATION TO PROTECT BASE OF BASIN FROM EROSION.
  3. REMOVE ALL COHESIVE SOILS (SC, SP-SM, SM) BELOW BASE OF BASIN AND REPLACE WITH LOOSE PLACED SAND (SP).

**EAST INFILTRATION BASIN**  
 LOWEST ELEV. 859.8 88,444 SF  
 MAXIMUM WATER ELEV. 863.0 114,829 SF  
 MAXIMUM DEPTH 3.2 FT  
 MAXIMUM VOLUME

RAMSEY BOULEVARD

143 R



**LEGEND**

- ⊕ PROPOSED SOIL BORING
- FUTURE 1 FT CONTOUR
- FUTURE 5 FOOT CONTOUR
- EXISTING 1 FT CONTOUR
- EXISTING 5 FOOT CONTOUR
- PROPOSED 1 FOOT CONTOUR
- PROPOSED 5 FOOT CONTOUR
- X 859.8 PROPOSED SPOT ELEVATION
- SILT FENCE
- PROPOSED STORM PIPE
- PROPOSED STORM STRUCTURE

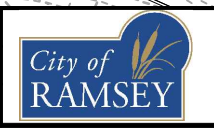
DATE	REVISION

I hereby certify that this plan, specification, or report was prepared by me or under my direct supervision and that I am a duly Licensed Professional Engineer under the laws of the State of Minnesota

LEONARD LINTON  
 Date 5/08/19 Lic. No. 21112

DESIGNED BY: LLL  
 DRAWN BY: LLL  
 CHECKED BY: BRW

DATE: 5/08/19  
 FILE No. 18-09



CITY OF RAMSEY  
 7550 SUNWOOD DRIVE  
 RAMSEY, MN 55303  
 (763) 427-1410 FAX (763) 433-9898

GRADING PLAN EAST

COR INFILTRATION BASIN IMPROVEMENTS  
 CITY PROJECT NO. 18-09  
 CITY OF RAMSEY, MINNESOTA

SHEET 12 OF 28 SHEETS