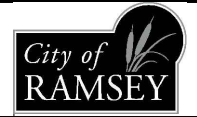


2019 CRACK SEAL QUANTITIES		
AREA	MILES	CRACK SEAL MATERIAL
A	2.46	12,283 LBS.
B	1.37	6,508 LBS.
C	3.34	13,483 LBS.
D	1.86	7,963 LBS.
E	1.38	9,256 LBS.
F	7.86	37,399 LBS.
G	2.88	22,888 LBS.
H	1.16	7,984 LBS.
I	1.89	10,201 LBS.
<b>TOTAL</b>	<b>24.20</b>	<b>127,965 LBS.</b>

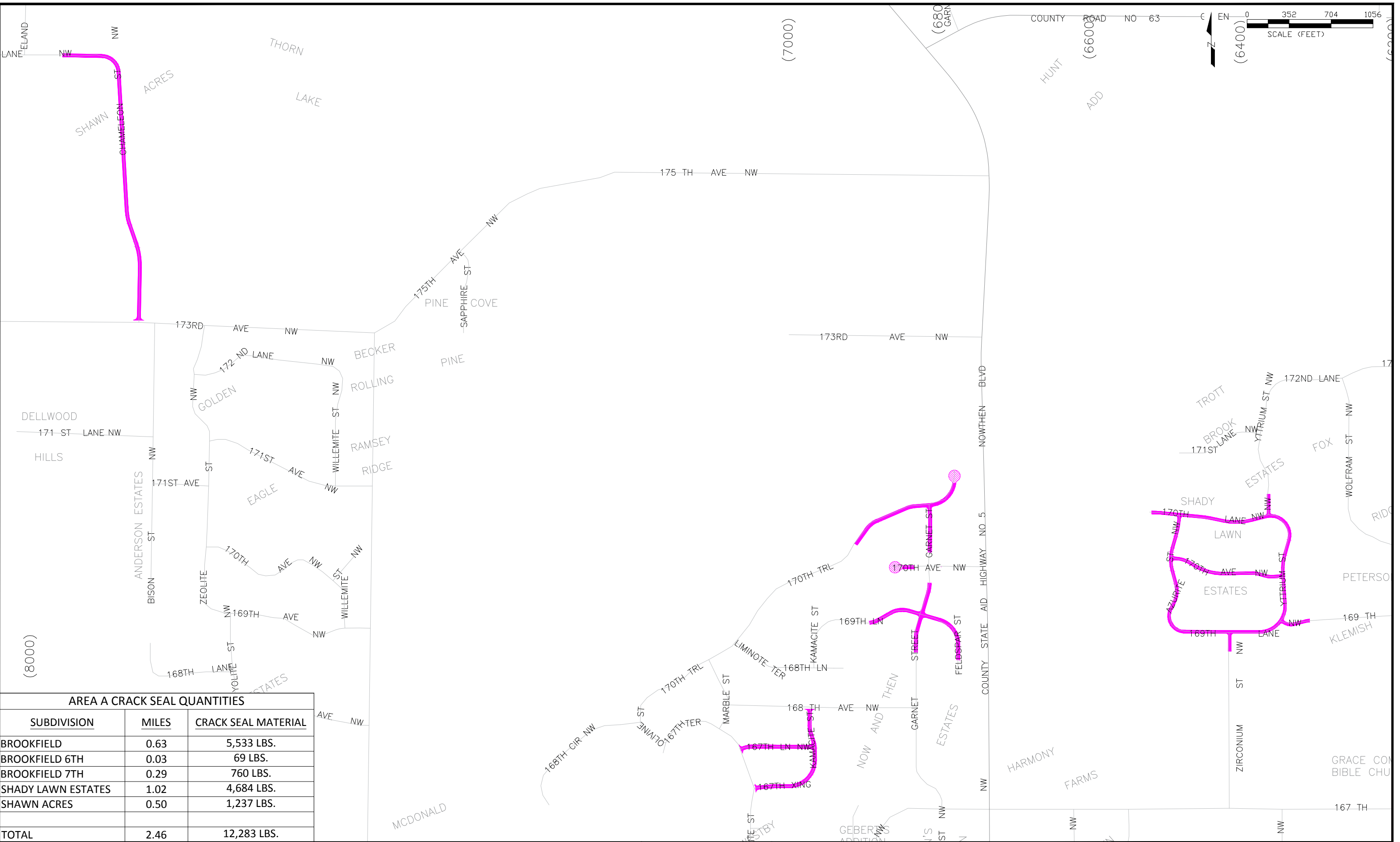
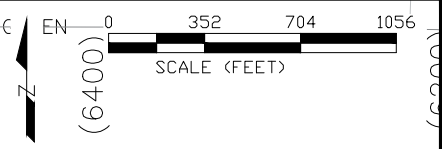
CRACK SEAL  
NOTE: CRACK SEAL - INCLUDES FACE OF CONCRETE CURB



CITY OF RAMSEY  
7550 SUNWOOD DRIVE  
RAMSEY, MN 55303  
(763) 427-1410 FAX (763) 433-9898

OVERALL MAP

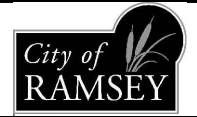
2019 CRACK SEAL IMPROVEMENTS  
CITY PROJECT NO. 19-00  
CITY OF RAMSEY, MINNESOTA



**AREA A CRACK SEAL QUANTITIES**

SUBDIVISION	MILES	CRACK SEAL MATERIAL
BROOKFIELD	0.63	5,533 LBS.
BROOKFIELD 6TH	0.03	69 LBS.
BROOKFIELD 7TH	0.29	760 LBS.
SHADY LAWN ESTATES	1.02	4,684 LBS.
SHAWN ACRES	0.50	1,237 LBS.
<b>TOTAL</b>	<b>2.46</b>	<b>12,283 LBS.</b>

CRACK SEAL  
 NOTE: CRACK SEAL - INCLUDES FACE OF CONCRETE CURB

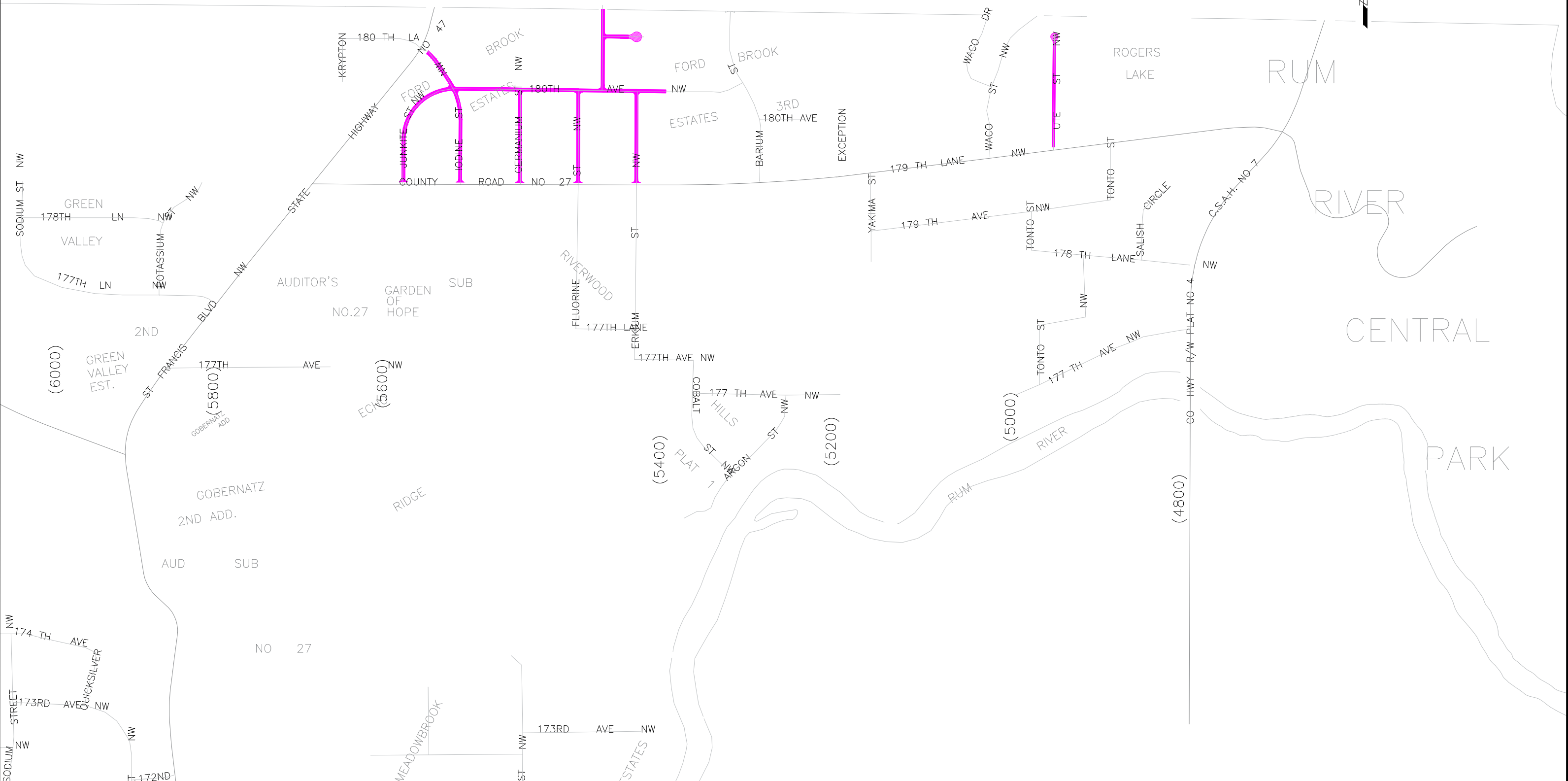


**CITY OF RAMSEY**  
 7550 SUNWOOD DRIVE  
 RAMSEY, MN 55303  
 (763) 427-1410 FAX (763) 433-9898

**AREA A**

**2019 CRACK SEAL IMPROVEMENTS**  
**CITY PROJECT NO. 19-00**  
 CITY OF RAMSEY, MINNESOTA

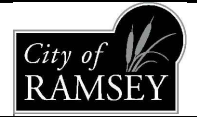
SHEET  
**2**  
 OF  
**10**  
 SHEETS



AREA B CRACK SEAL QUANTITIES

SUBDIVISION	MILES	CRACK SEAL MATERIAL
FORD BROOK ESTATES	1.21	5,672 LBS.
SECTION 01 UNPLATTED	0.16	836 LBS.
<b>TOTAL</b>	<b>1.37</b>	<b>6,508 LBS.</b>

CRACK SEAL  
NOTE: CRACK SEAL - INCLUDES FACE OF CONCRETE CURB



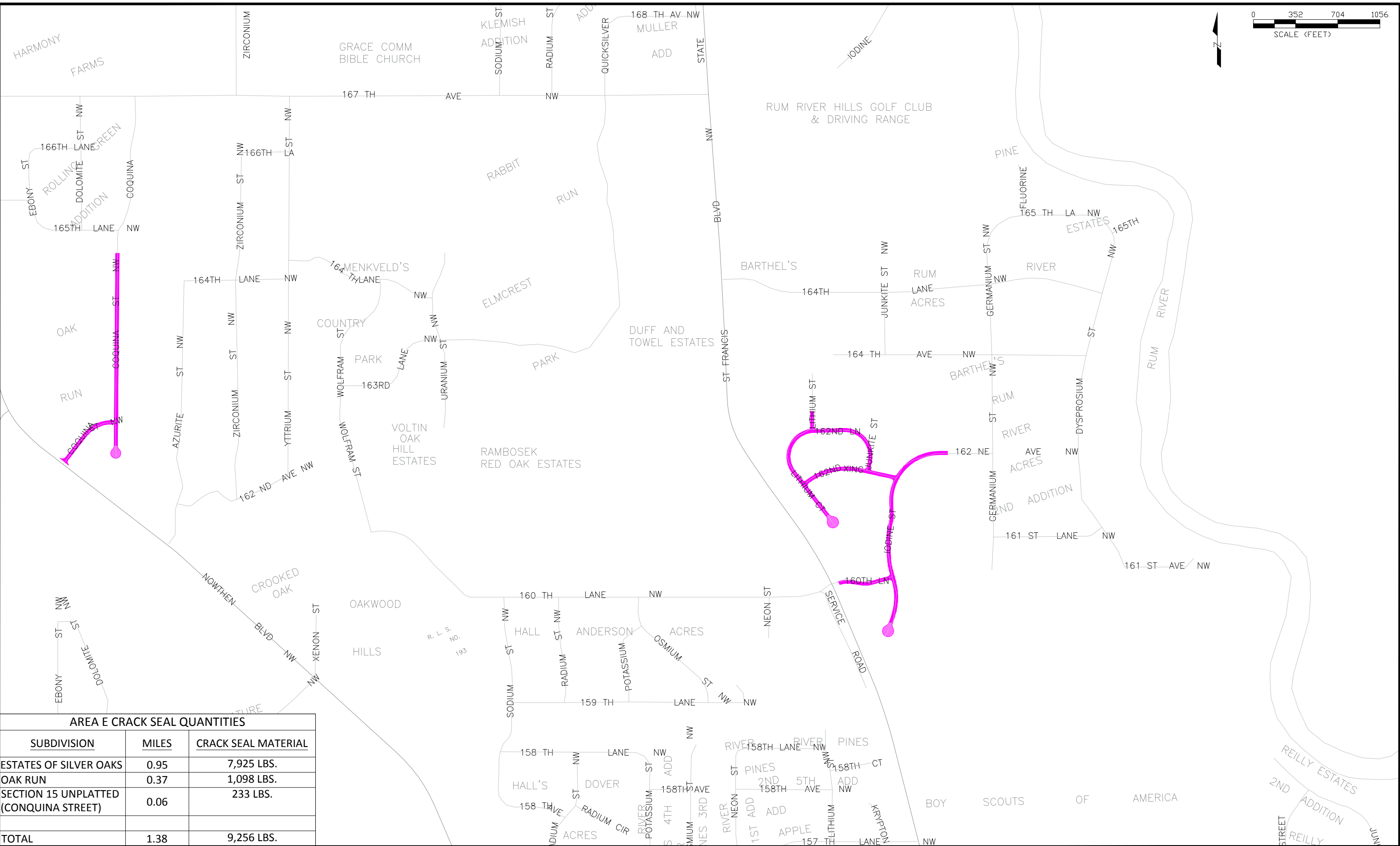
CITY OF RAMSEY  
7550 SUNWOOD DRIVE  
RAMSEY, MN 55303  
(763) 427-1410 FAX (763) 433-9898

AREA B

2019 CRACK SEAL IMPROVEMENTS  
CITY PROJECT NO. 19-00  
CITY OF RAMSEY, MINNESOTA



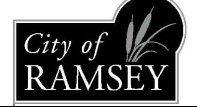




**AREA E CRACK SEAL QUANTITIES**

SUBDIVISION	MILES	CRACK SEAL MATERIAL
ESTATES OF SILVER OAKS	0.95	7,925 LBS.
OAK RUN	0.37	1,098 LBS.
SECTION 15 UNPLATTED (CONQUINA STREET)	0.06	233 LBS.
<b>TOTAL</b>	<b>1.38</b>	<b>9,256 LBS.</b>

CRACK SEAL  
NOTE: CRACK SEAL - INCLUDES FACE OF CONCRETE CURB

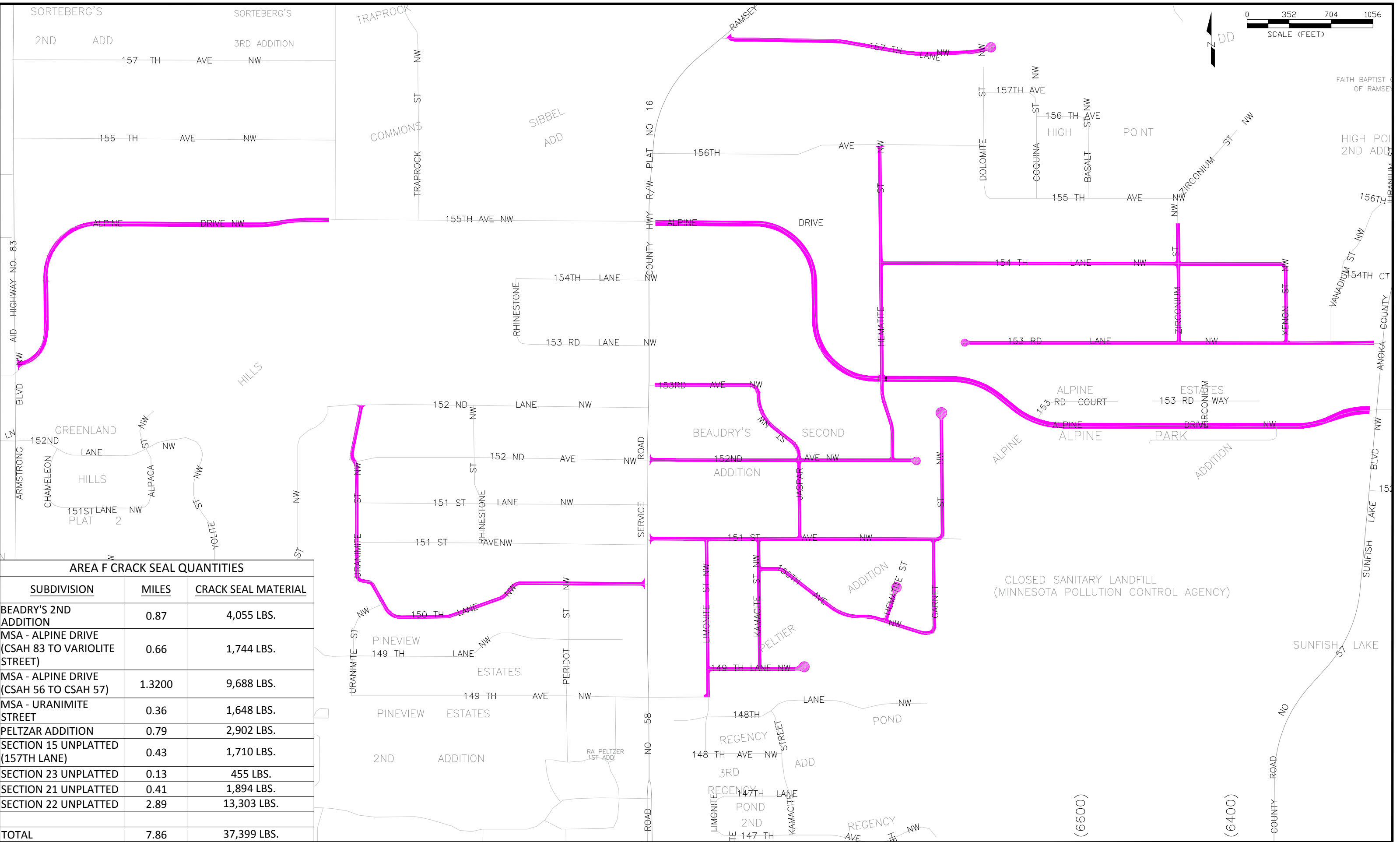
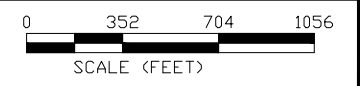


**CITY OF RAMSEY**  
7550 SUNWOOD DRIVE  
RAMSEY, MN 55303  
(763) 427-1410 FAX (763) 433-9898

AREA E

**2019 CRACK SEAL IMPROVEMENTS**  
CITY PROJECT NO. 19-00  
CITY OF RAMSEY, MINNESOTA

SORTEBERG'S  
2ND ADD 3RD ADDITION  
157 TH AVE NW

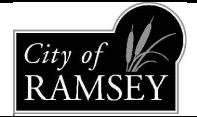


CLOSED SANITARY LANDFILL  
(MINNESOTA POLLUTION CONTROL AGENCY)

**AREA F CRACK SEAL QUANTITIES**

SUBDIVISION	MILES	CRACK SEAL MATERIAL
BEADRY'S 2ND ADDITION	0.87	4,055 LBS.
MSA - ALPINE DRIVE (CSAH 83 TO VARIOLITE STREET)	0.66	1,744 LBS.
MSA - ALPINE DRIVE (CSAH 56 TO CSAH 57)	1.3200	9,688 LBS.
MSA - URANIMITE STREET	0.36	1,648 LBS.
PELTZAR ADDITION	0.79	2,902 LBS.
SECTION 15 UNPLATTED (157TH LANE)	0.43	1,710 LBS.
SECTION 23 UNPLATTED	0.13	455 LBS.
SECTION 21 UNPLATTED	0.41	1,894 LBS.
SECTION 22 UNPLATTED	2.89	13,303 LBS.
<b>TOTAL</b>	<b>7.86</b>	<b>37,399 LBS.</b>

CRACK SEAL  
NOTE: CRACK SEAL - INCLUDES FACE OF CONCRETE CURB

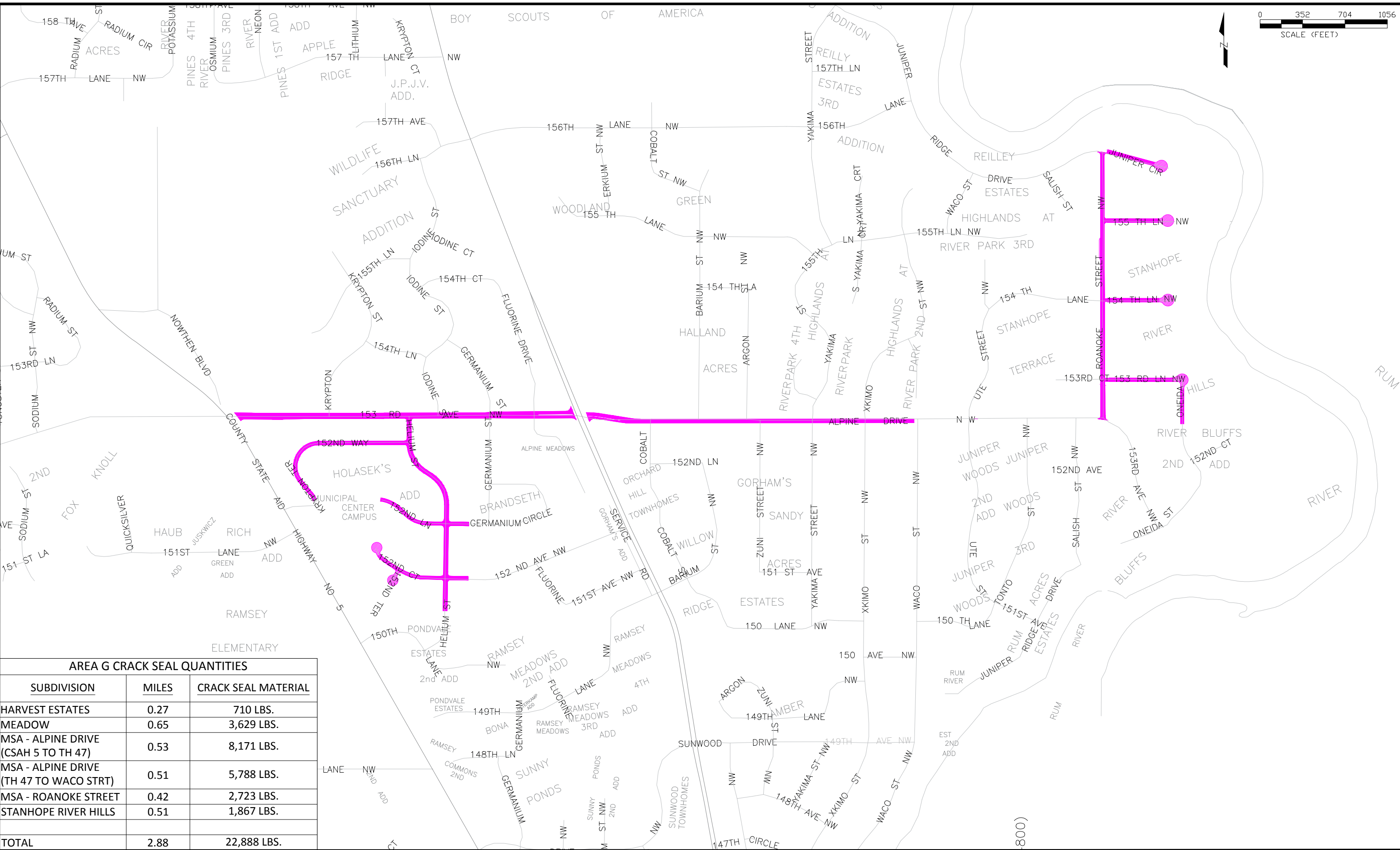


**CITY OF RAMSEY**  
7550 SUNWOOD DRIVE  
RAMSEY, MN 55303  
(763) 427-1410 FAX (763) 433-9898

AREA F

**2019 CRACK SEAL IMPROVEMENTS**  
**CITY PROJECT NO. 19-00**  
CITY OF RAMSEY, MINNESOTA

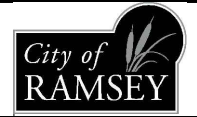
SHEET 7 OF 10 SHEETS



**AREA G CRACK SEAL QUANTITIES**

SUBDIVISION	MILES	CRACK SEAL MATERIAL
HARVEST ESTATES	0.27	710 LBS.
MEADOW	0.65	3,629 LBS.
MSA - ALPINE DRIVE (CSAH 5 TO TH 47)	0.53	8,171 LBS.
MSA - ALPINE DRIVE (TH 47 TO WACO STRT)	0.51	5,788 LBS.
MSA - ROANOKE STREET	0.42	2,723 LBS.
STANHOPE RIVER HILLS	0.51	1,867 LBS.
<b>TOTAL</b>	<b>2.88</b>	<b>22,888 LBS.</b>

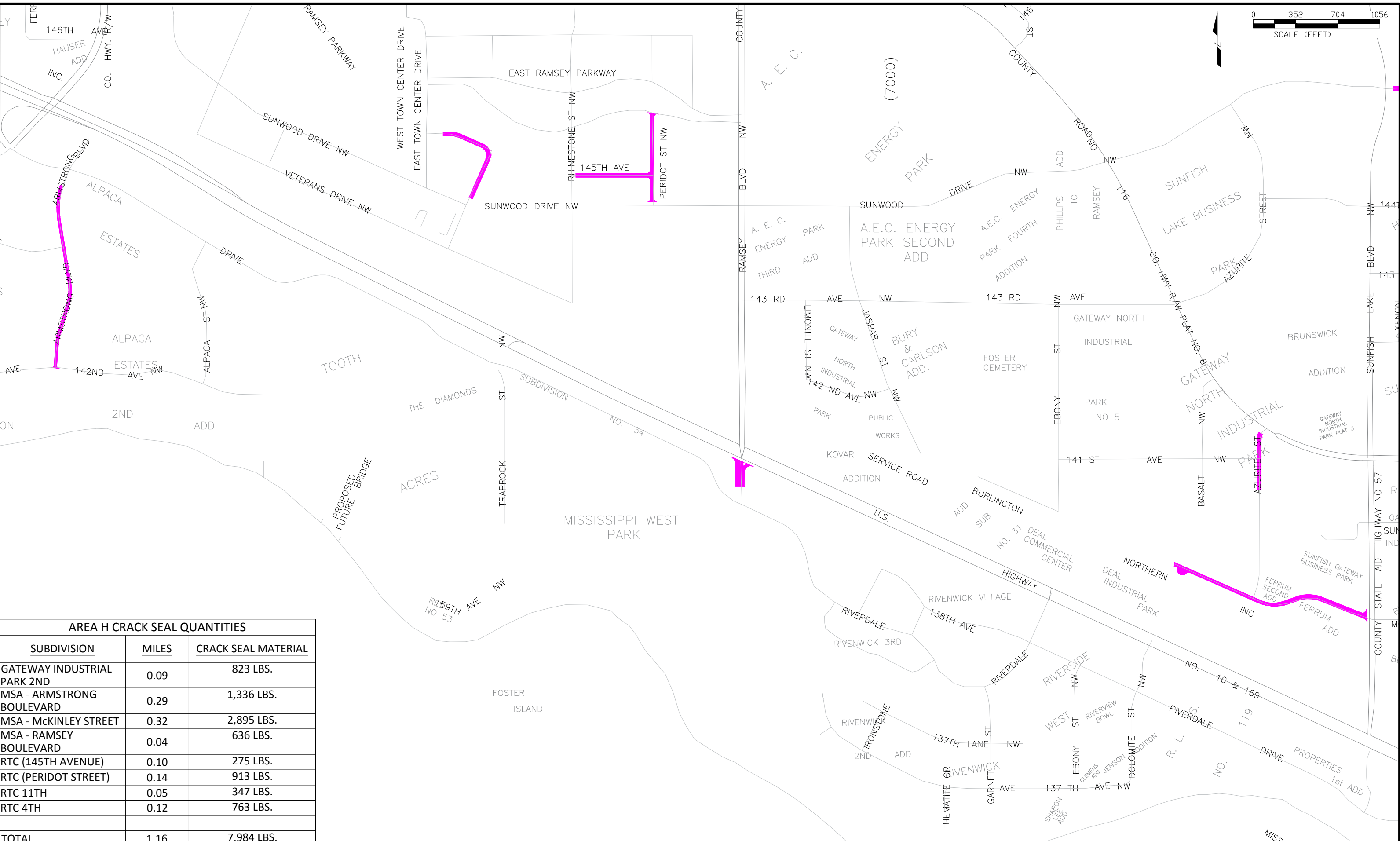
CRACK SEAL  
NOTE: CRACK SEAL - INCLUDES FACE OF CONCRETE CURB



**CITY OF RAMSEY**  
7550 SUNWOOD DRIVE  
RAMSEY, MN 55303  
(763) 427-1410 FAX (763) 433-9898

**AREA G**

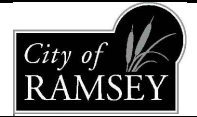
**2019 CRACK SEAL IMPROVEMENTS**  
**CITY PROJECT NO. 19-00**  
CITY OF RAMSEY, MINNESOTA



**AREA H CRACK SEAL QUANTITIES**

SUBDIVISION	MILES	CRACK SEAL MATERIAL
GATEWAY INDUSTRIAL PARK 2ND	0.09	823 LBS.
MSA - ARMSTRONG BOULEVARD	0.29	1,336 LBS.
MSA - MCKINLEY STREET	0.32	2,895 LBS.
MSA - RAMSEY BOULEVARD	0.04	636 LBS.
RTC (145TH AVENUE)	0.10	275 LBS.
RTC (PERIDOT STREET)	0.14	913 LBS.
RTC 11TH	0.05	347 LBS.
RTC 4TH	0.12	763 LBS.
<b>TOTAL</b>	<b>1.16</b>	<b>7,984 LBS.</b>

CRACK SEAL  
 NOTE: CRACK SEAL - INCLUDES FACE OF CONCRETE CURB



**CITY OF RAMSEY**  
 7550 SUNWOOD DRIVE  
 RAMSEY, MN 55303  
 (763) 427-1410 FAX (763) 433-9898

**AREA H**

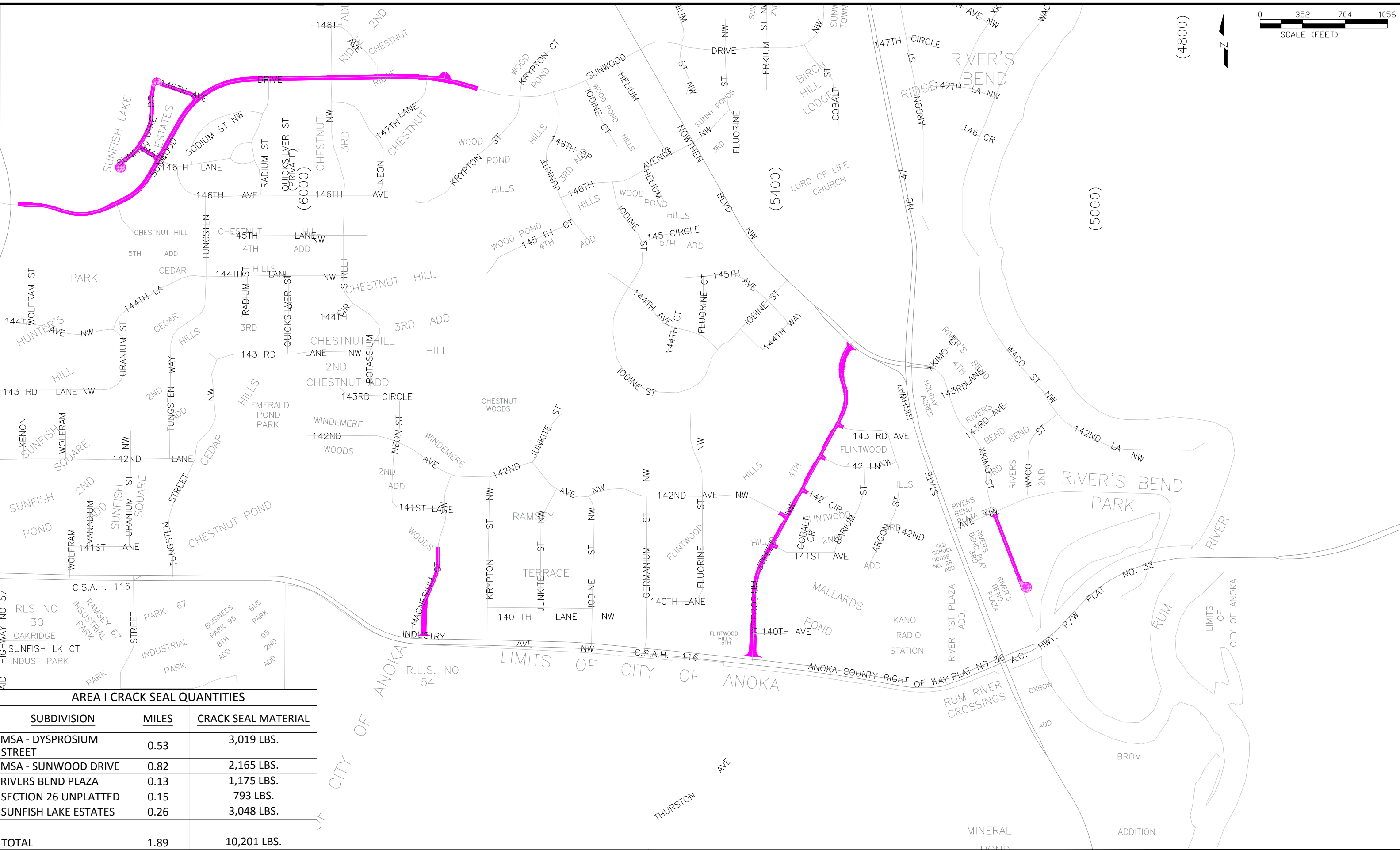
**2019 CRACK SEAL IMPROVEMENTS**  
**CITY PROJECT NO. 19-00**  
 CITY OF RAMSEY, MINNESOTA



(4800)

(5000)

(5400)



**AREA I CRACK SEAL QUANTITIES**

SUBDIVISION	MILES	CRACK SEAL MATERIAL
MSA - DYSPROSIUM STREET	0.53	3,019 LBS.
MSA - SUNWOOD DRIVE	0.82	2,165 LBS.
RIVERS BEND PLAZA	0.13	1,175 LBS.
SECTION 26 UNPLATTED	0.15	793 LBS.
SUNFISH LAKE ESTATES	0.26	3,048 LBS.
<b>TOTAL</b>	<b>1.89</b>	<b>10,201 LBS.</b>

CRACK SEAL  
NOTE: CRACK SEAL - INCLUDES FACE OF CONCRETE CURB



**CITY OF RAMSEY**  
7550 SUNWOOD DRIVE  
RAMSEY, MN 55303  
(763) 427-1410 FAX (763) 433-9898

**AREA I**

**2019 CRACK SEAL IMPROVEMENTS**  
**CITY PROJECT NO. 19-00**  
CITY OF RAMSEY, MINNESOTA