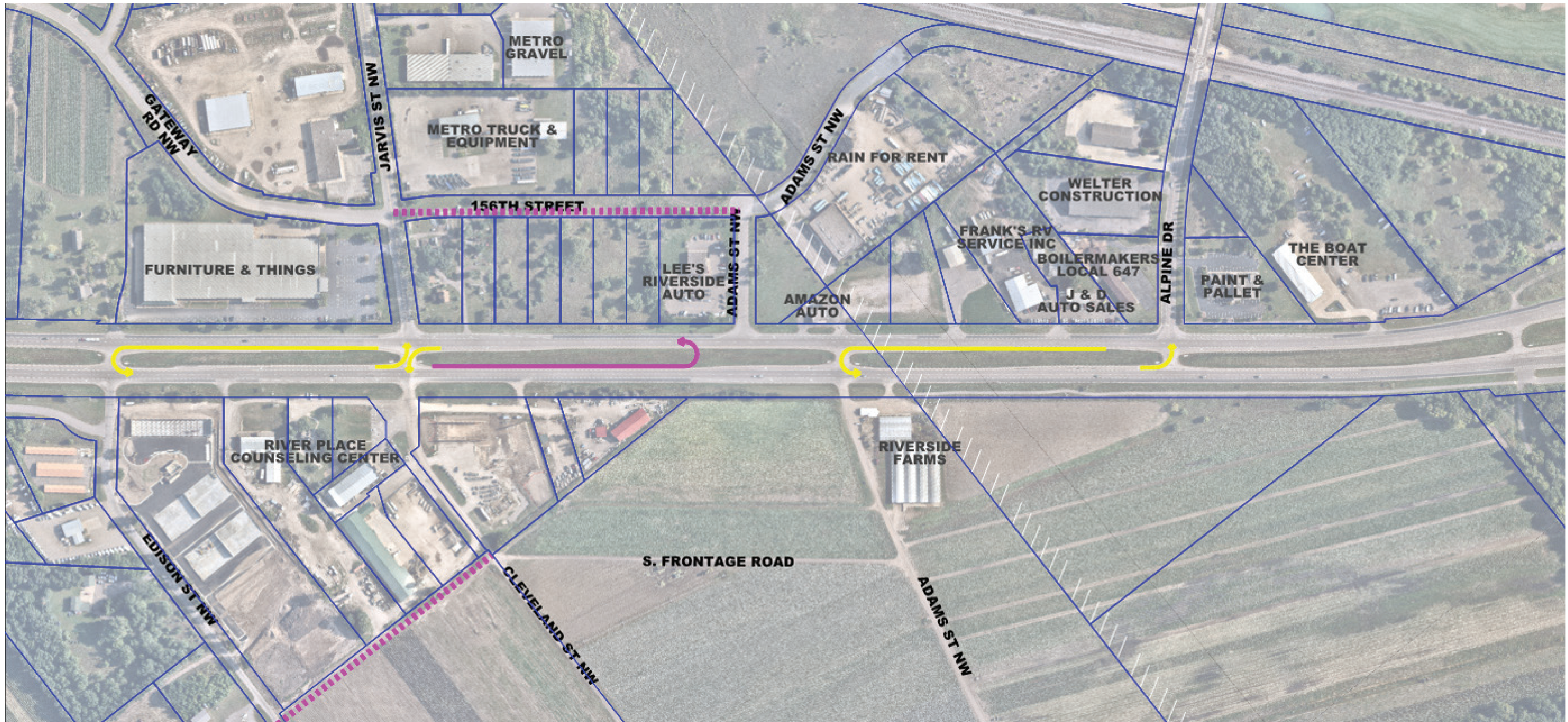


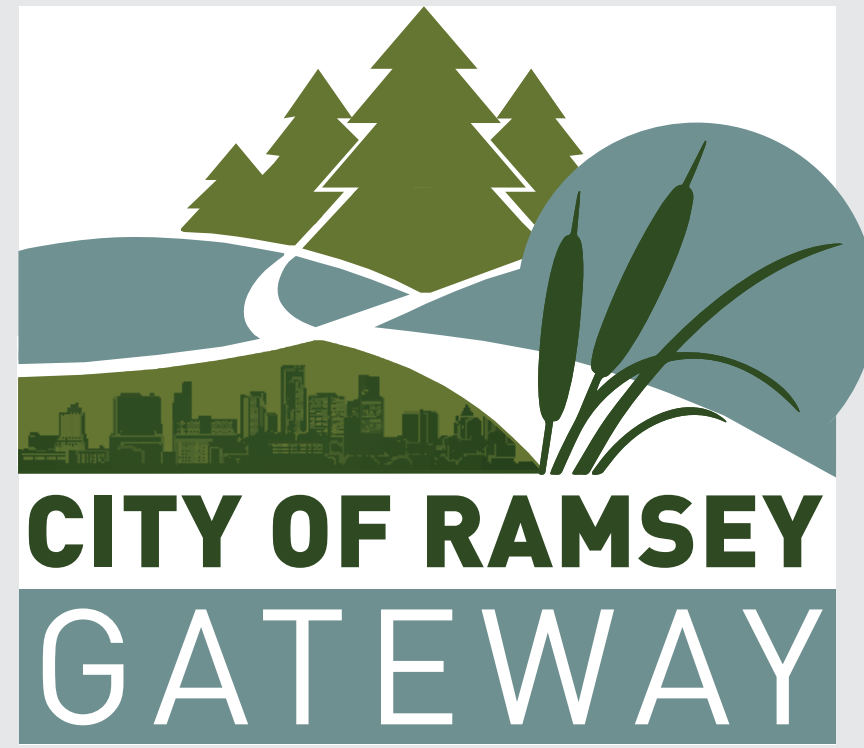
# WEST END AREA

## JARVIS STREET & ALPINE DRIVE



### INTERIM OPTION - UNSIGNALIZED RCUT



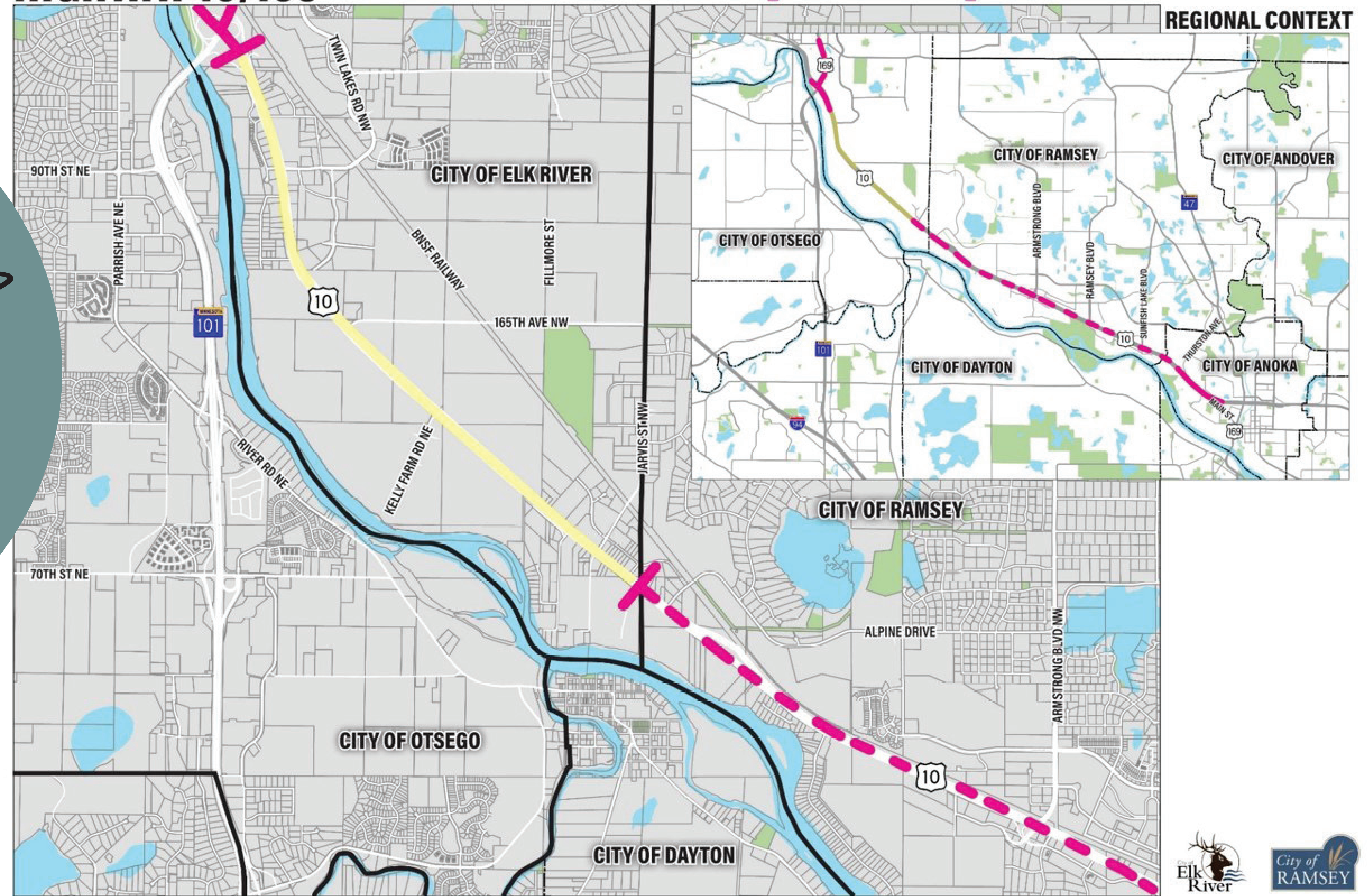


# WEST END AREA JARVIS STREET & ALPINE DRIVE



## HIGHWAY 10/169

— CITY LIMITS    UNDER STUDY    FUNDED PROJECT



*FUTURE STUDY NEEDED  
&  
COORDINATION WITH  
THE CITY OF ELK RIVER*

