

## TIF Districts



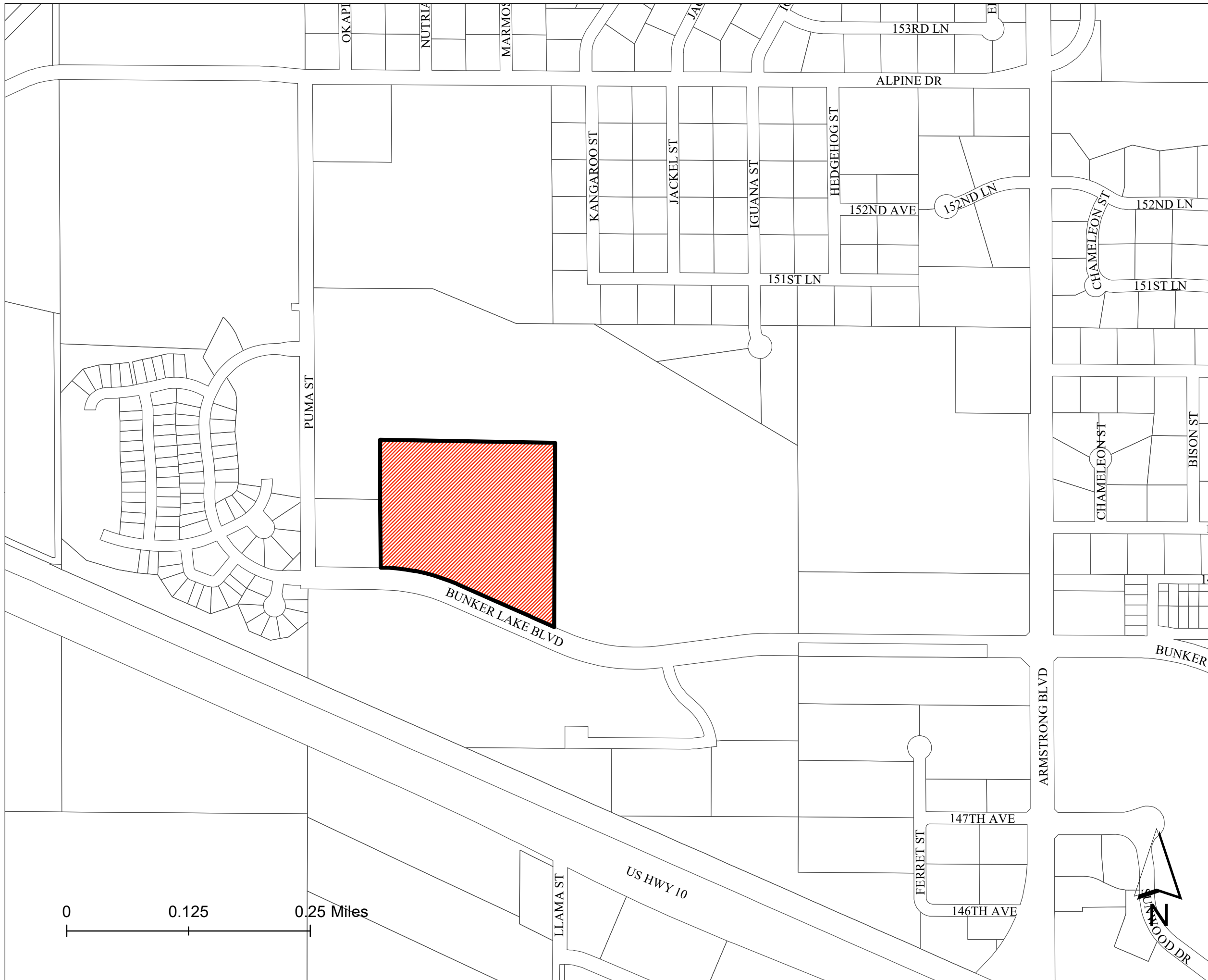
Site to be platted as:  
Lot 1, Block 1, Amsterdam Extension

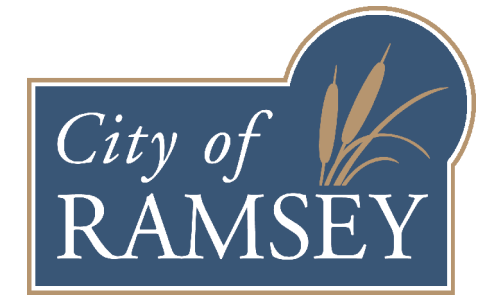
Map Prepared by the City of Ramsey  
Data Source: Anoka County, City of Ramsey  
June 3, 2019  
Lampert Conformal Conic Projection  
I:\GIS\Users\Tim\TIF Properties

This map has been compiled using information gathered from various governmental offices and other sources and is to be used for reference purposes only. It is neither a legally recorded map nor a survey and is not intended for use as one. The Geographic Information System (GIS) data used to develop this map is not warranted by the City as being error-free.



The City does not represent that the GIS data can be used for exact measurement of distance or direction or precision in the depiction of geographic features. If errors or discrepancies are found, please contact (763) 427-1410.

The City of Ramsey disclaims any responsibility for or liability for the accuracy of the information at any point of initial contact with a GIS to which the public has general access. The preceding disclaimer is provided pursuant to Minnesota Statute 466.03, Subd. 21 (2000), and the user of this map acknowledges that the City of Ramsey is immune from any and all claims brought by User, its





## TIF Districts

-  TIF District 17
-  Development District #1

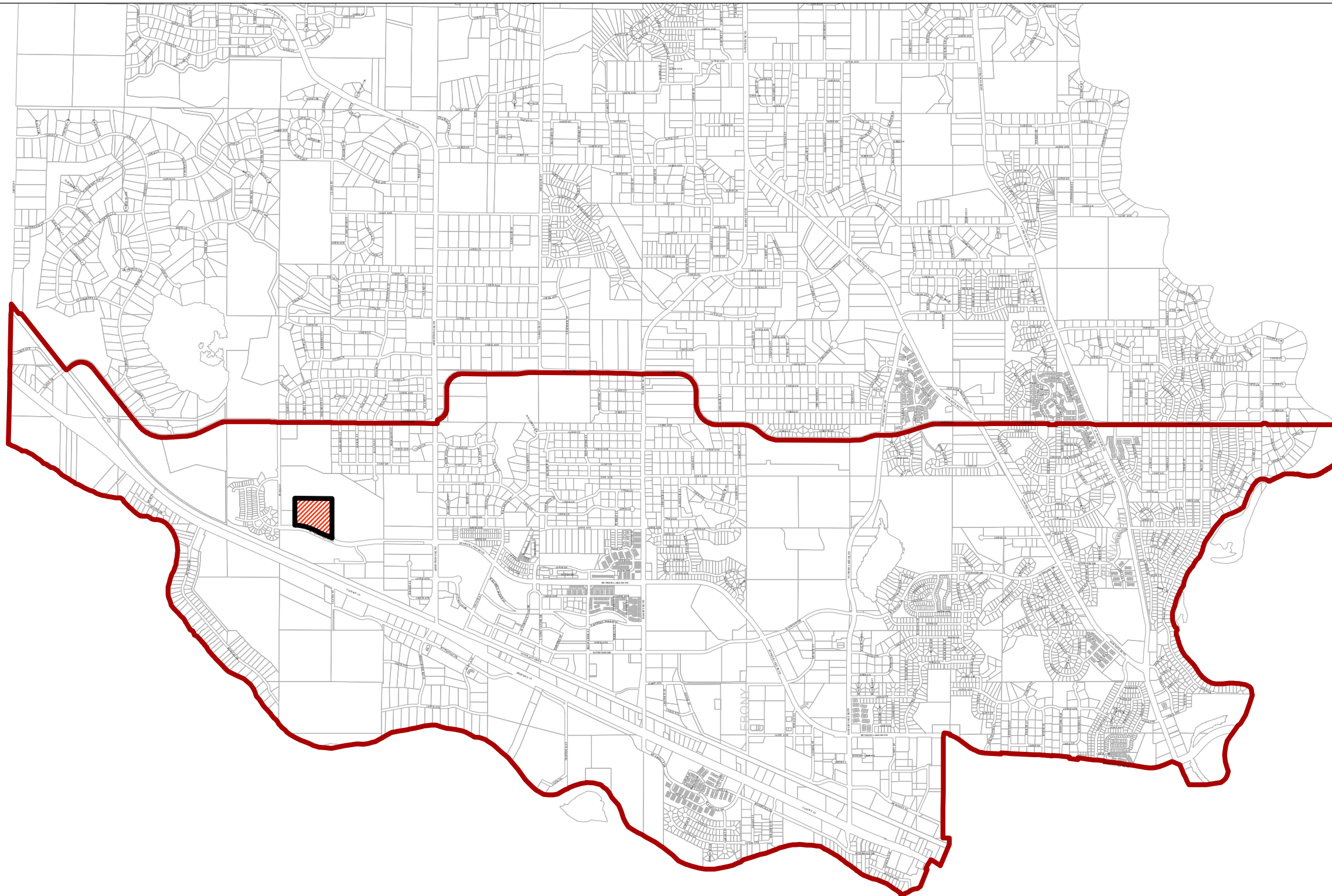
Site to be platted as:  
Lot 1, Block 1, Amsterdam Extension

Map Prepared by the City of Ramsey  
Data Source: Anoka County, City of Ramsey  
June 3, 2019  
Lampert Conformal Conic Projection  
I:\GIS\Users\Tim\TIF Properties

This map has been compiled using information gathered from various governmental offices and other sources and is to be used for reference purposes only. It is neither a legally recorded map nor a survey and is not intended for use as one. The Geographic Information System (GIS) data used to develop this map is not warranted by the City as being error-free.

The City does not represent that the GIS data can be used for exact measurement of distance or direction or precision in the depiction of geographic features. If errors or discrepancies are found, please contact (763) 427-1410.

The City of Ramsey disclaims any responsibility for or liability for the accuracy of the information at any point of initial contact with a GIS to which the public has general access. The preceding disclaimer is provided pursuant to Minnesota Statute 466.03, Subd. 21 (2000), and the user of this map acknowledges that the City of Ramsey is immune from any and all claims brought by User, its



0 0.75 1.5 Miles

