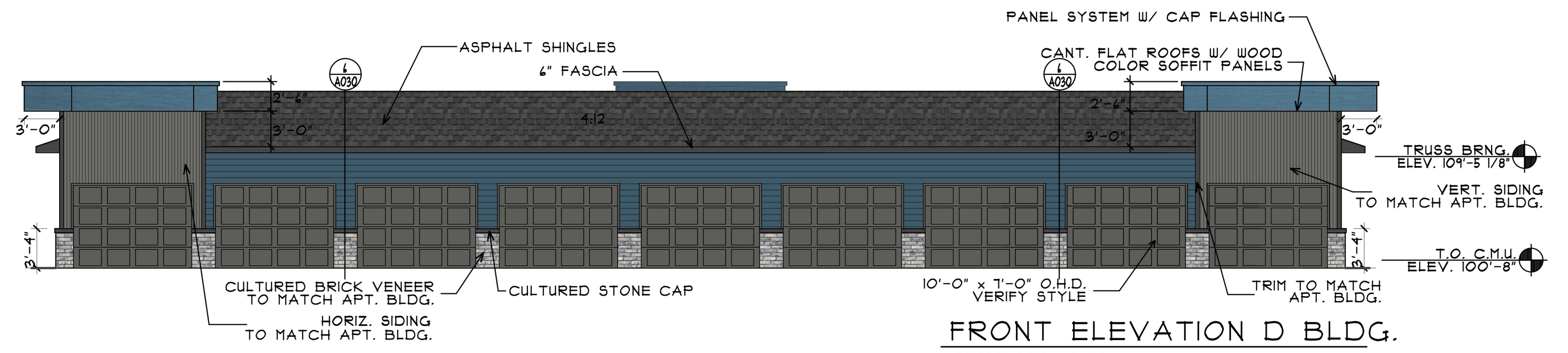
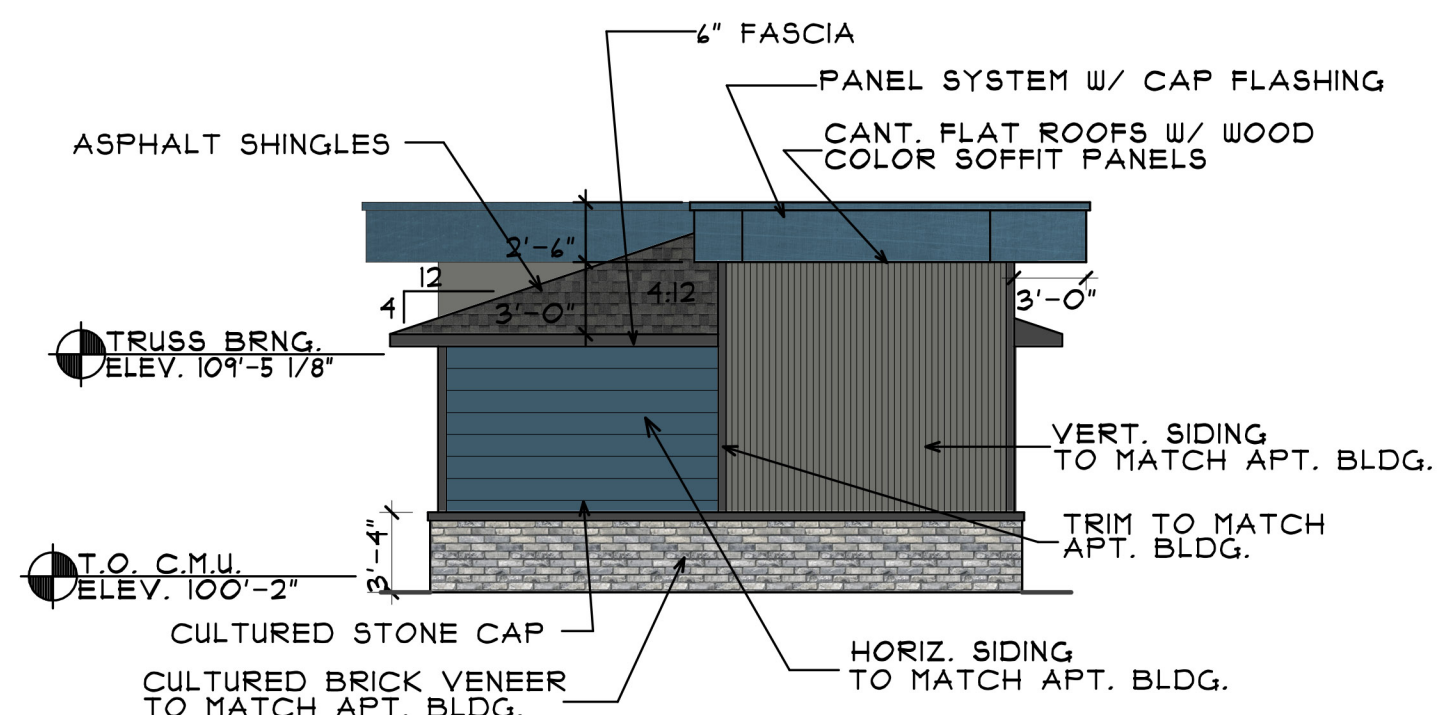


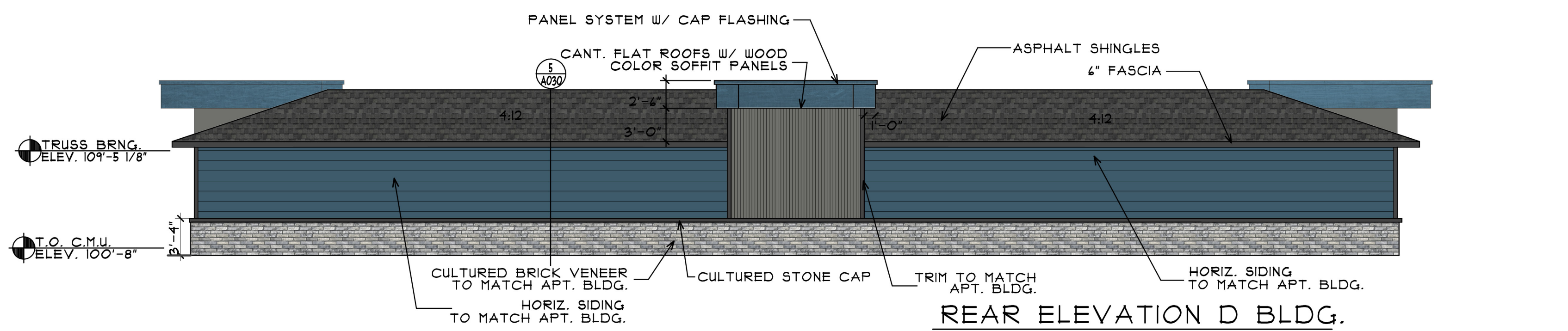
SIDE ELEVATION A, B & D BLDG.
SCALE: 1/8" = 1'-0"



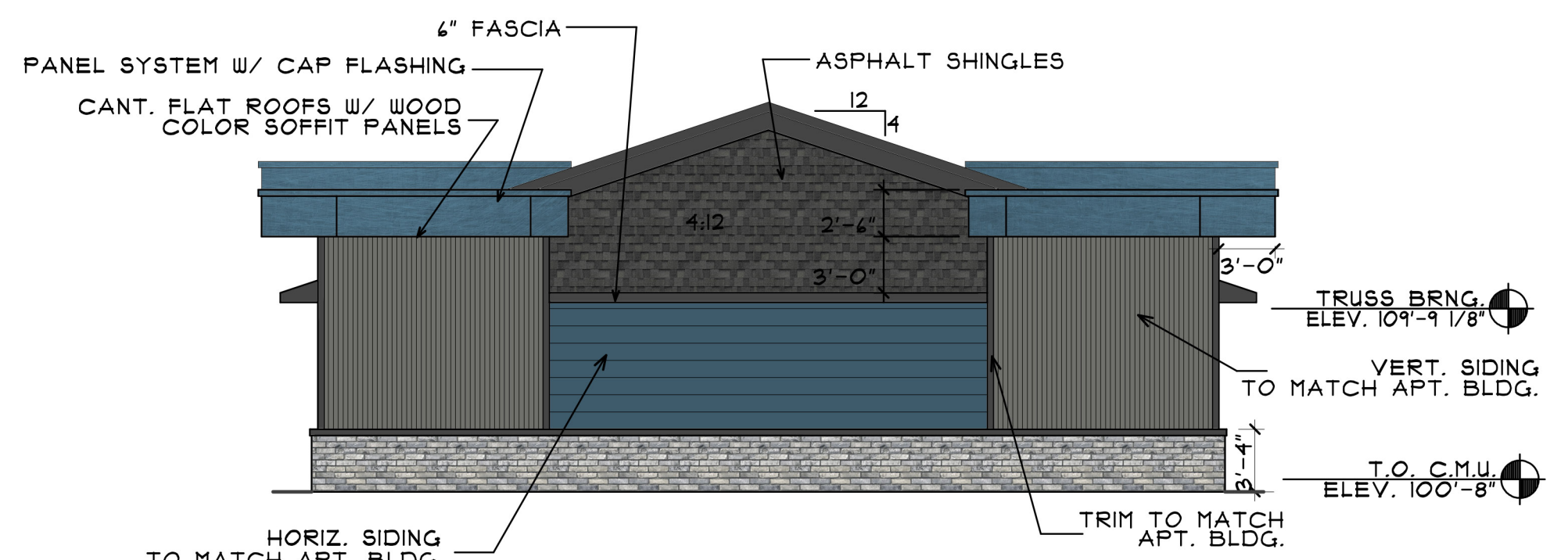
FRONT ELEVATION D BLDG.
SCALE: 1/8" = 1'-0"



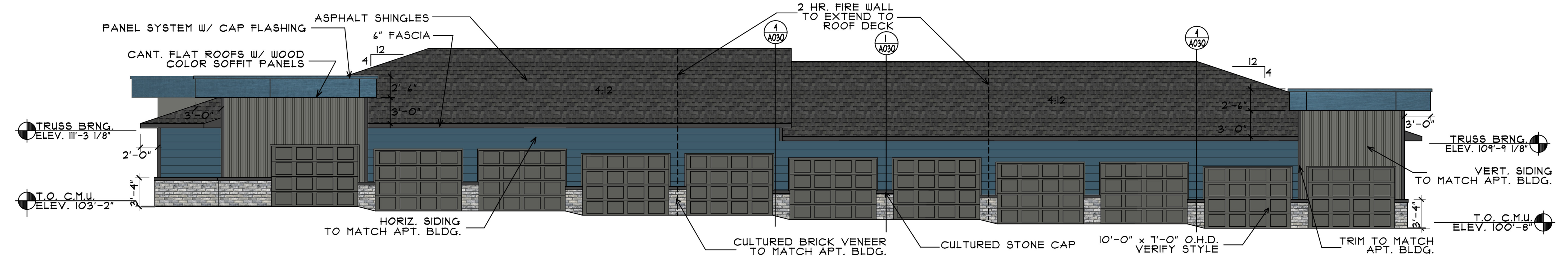
SIDE ELEVATION A, B & D BLDG.
SCALE: 1/8" = 1'-0"



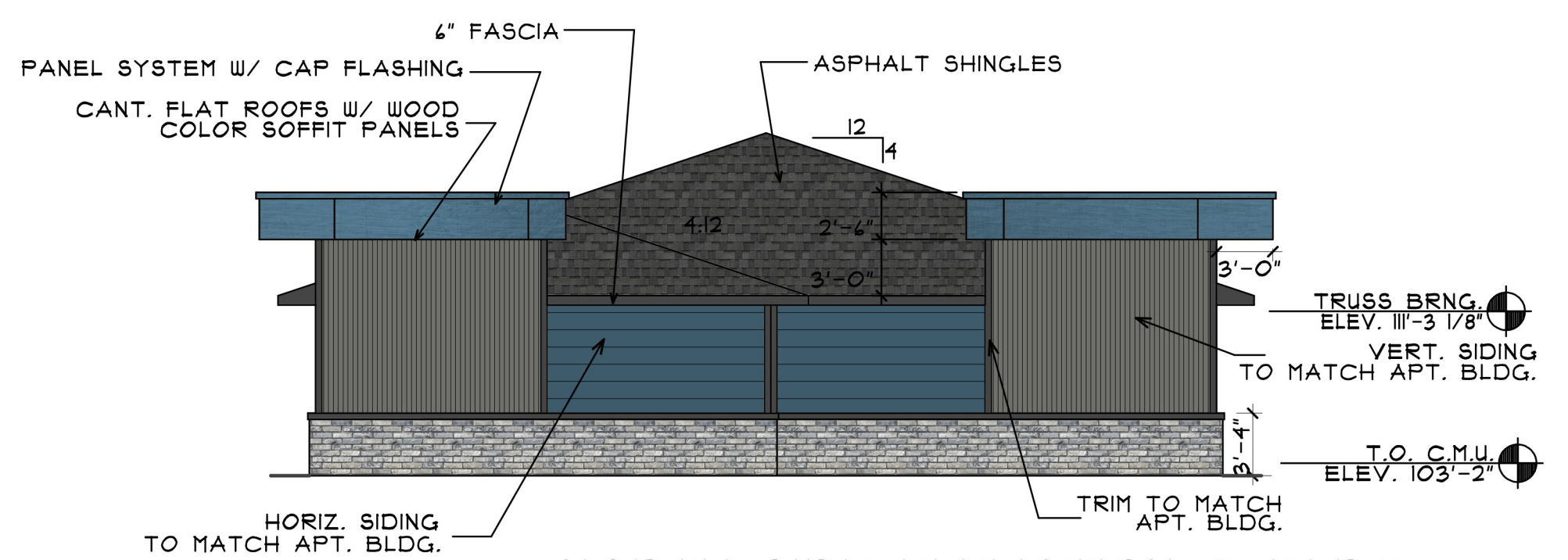
REAR ELEVATION D BLDG.
SCALE: 1/8" = 1'-0"



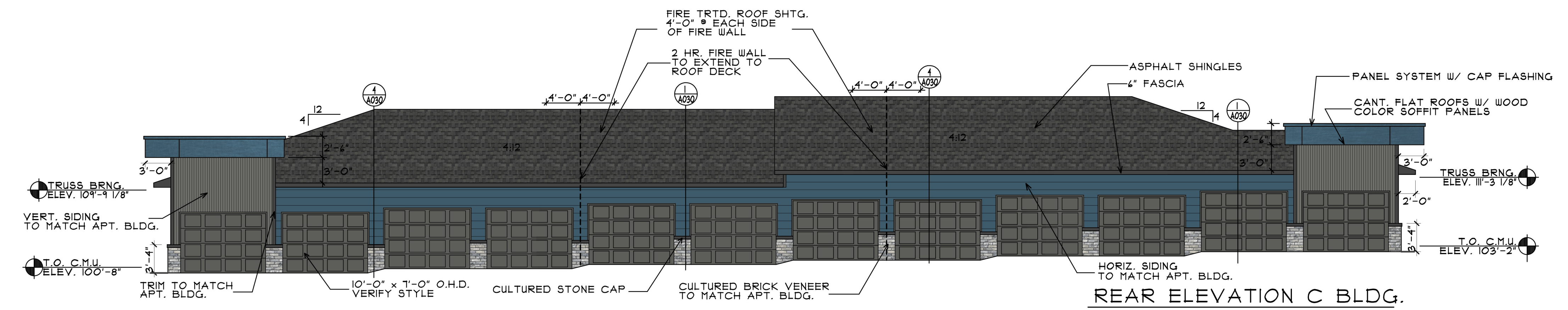
SOUTH SIDE ELEVATION C BLDG.
SCALE: 1/8" = 1'-0"



FRONT ELEVATION C BLDG.
SCALE: 1/8" = 1'-0"



NORTH SIDE ELEVATION C BLDG.
SCALE: 1/8" = 1'-0"



REAR ELEVATION C BLDG.
SCALE: 1/8" = 1'-0"

<p>COLE GROUP ARCHITECTS LLC. 216 Park Avenue South Suite 102 Saint Cloud, MN 56301 (320) 454-4510 www.colegrouparchitects.com</p>	<p>These documents are not valid for building permit unless signed in ink and over sealed. Copies are not valid.</p>	<p>PSD; LLC MATT KUKER 7533 SUNWOOD DR SUITE 315 RAMSEY, MN 55303 PHONE: (763) 427-5955</p>	<p>PROPOSED: THE SAPPHIRE APARTMENTS RAMSEY, MN</p>	<p>Project No. 17030 Issue Date: Document Set: A032 FOR BIDS</p>	
	<p>I hereby certify that this plan, specification or report was prepared by me or under my direct supervision and that I am a duly licensed Architect under the laws of the state of MINNESOTA.</p>	<p>Date: 2/22/28 Name: NORMAN E. COLE Signature</p>	<p>FILE: 14082G COM: 4 PLOTTED: 4-3-19</p>		