

Ramsey Highway 10 Corridor Improvements

City of Ramsey Council Workshop

April 9, 2019



Anoka County
MINNESOTA

Respectful, Innovative, Fiscally Responsible

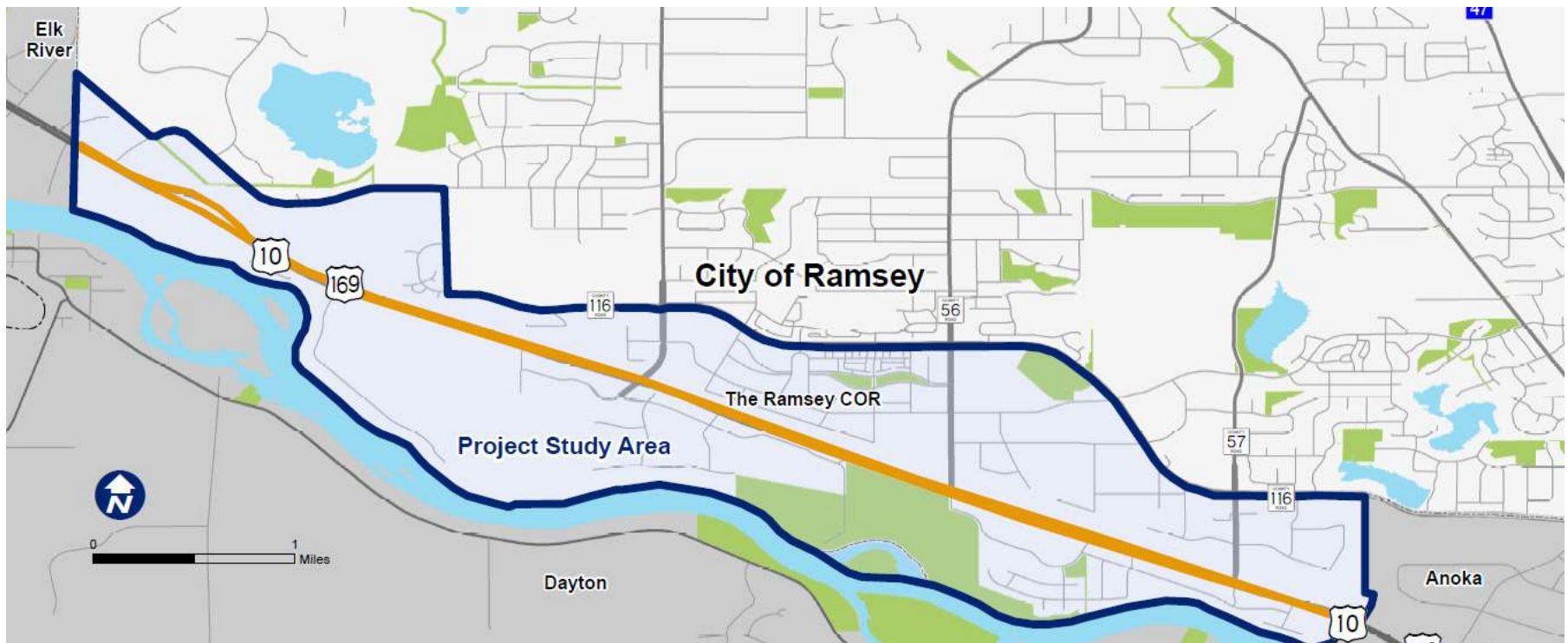
m DEPARTMENT OF
TRANSPORTATION





Meeting Overview

- ✓ Improvement Concept Update
- ✓ Public Involvement Next Steps





Ramsey Blvd Concepts

- Railroad Grade Separation on All Concepts
- Tight Diamond
- Folded WB Off Tight Diamond
- Overpass with Right-In/Right-Out
- Tight Diamond with W Frontage Rd





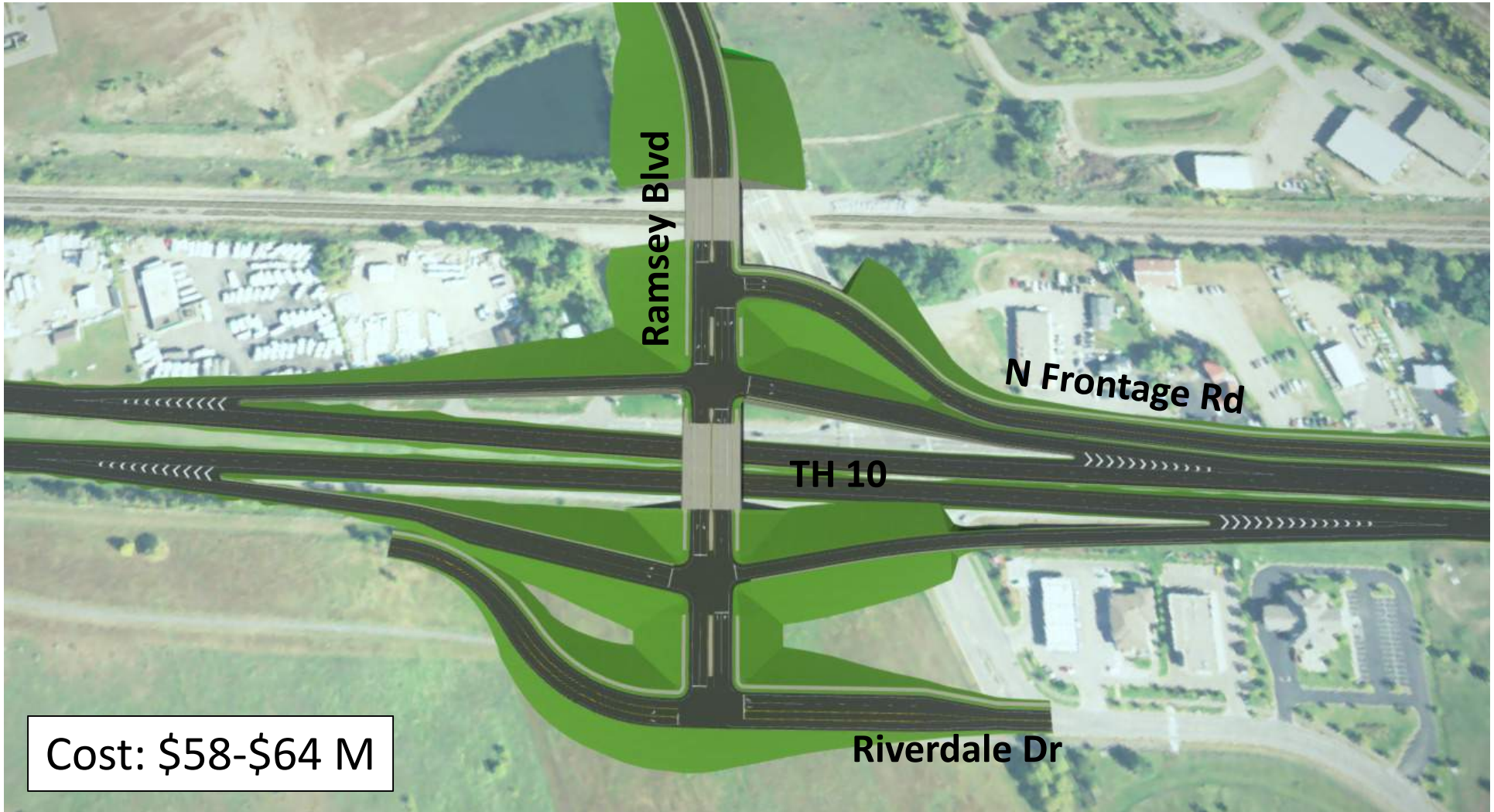
Anoka County
MINNESOTA
Respectful. Innovative. Fiscally Responsible.



DEPARTMENT OF
TRANSPORTATION

Ramsey Blvd Concepts

Tight Diamond (Option 2)

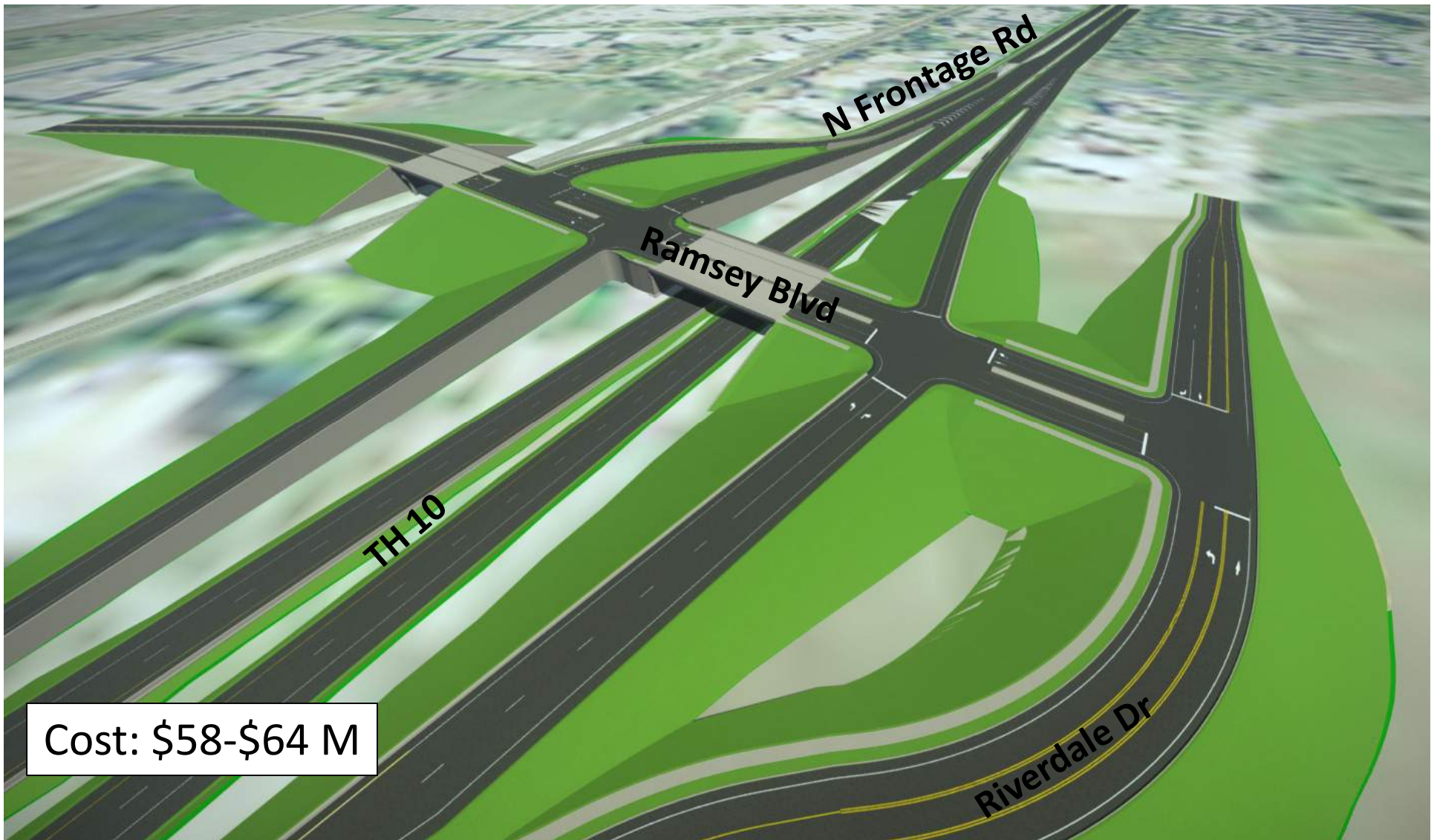


Cost: \$58-\$64 M



Ramsey Blvd Concepts

Tight Diamond (Option 2)



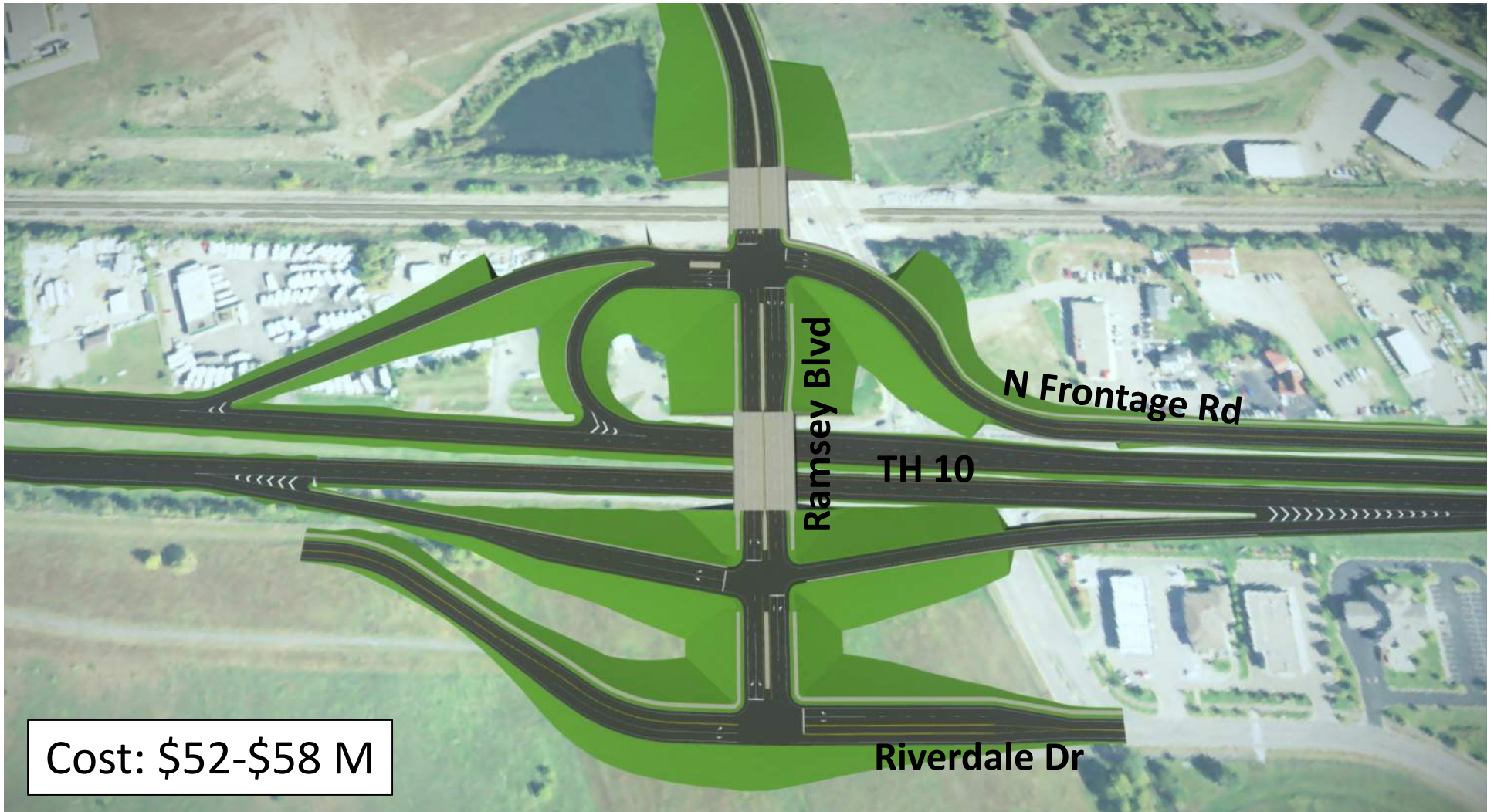
Cost: \$58-\$64 M



Anoka County
MINNESOTA
Respectful. Innovative. Fiscally Responsible.
m DEPARTMENT OF
TRANSPORTATION

Ramsey Blvd Concepts

Folded WB Off Tight Diamond (Option 4)

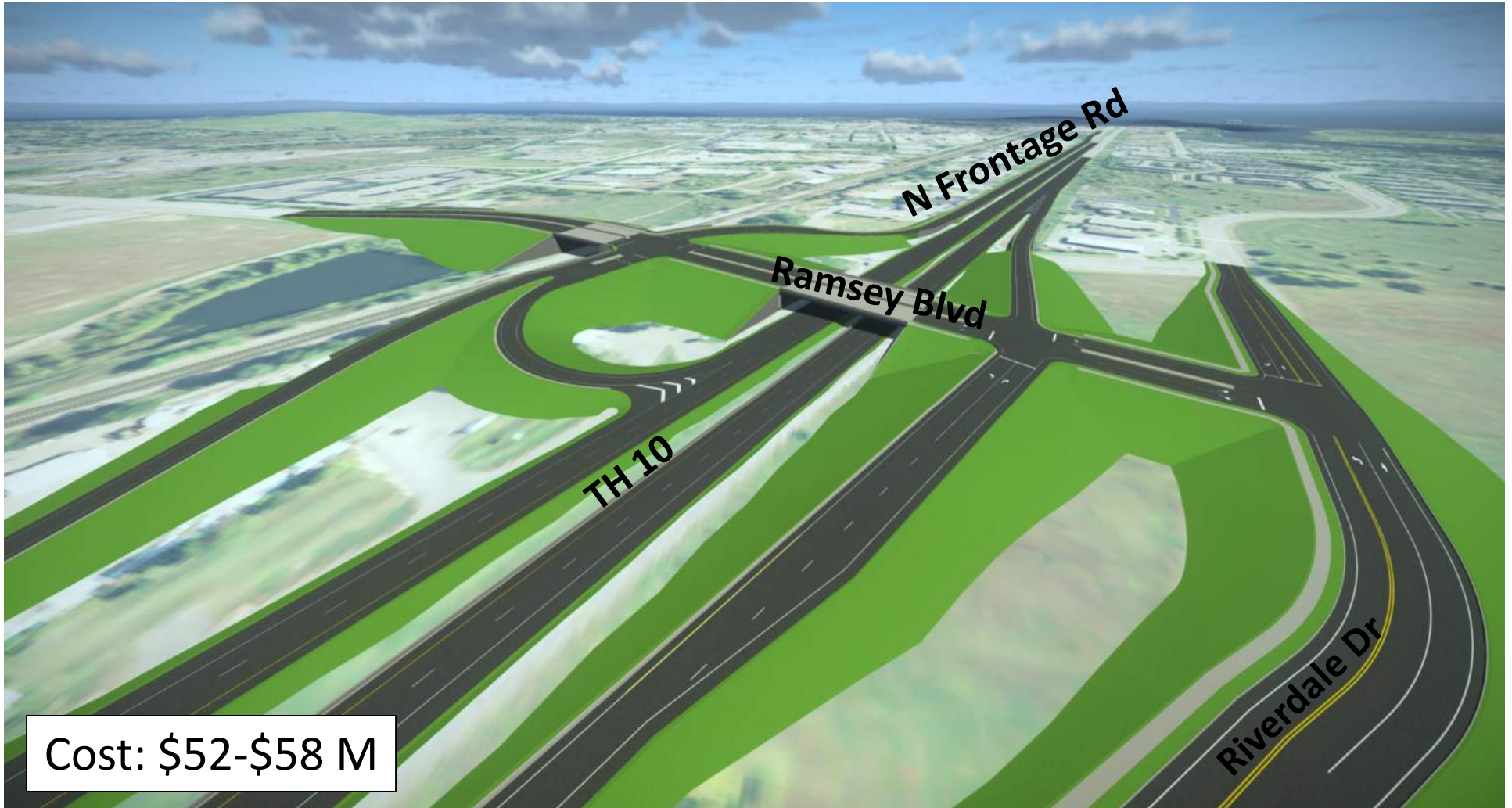


Cost: \$52-\$58 M



Ramsey Blvd Concepts

Folded WB Off Tight Diamond (Option 4)



Cost: \$52-\$58 M



Anoka County
MINNESOTA
Respectful. Innovative. Fiscally Responsible.
m DEPARTMENT OF
TRANSPORTATION

Ramsey Blvd Concepts

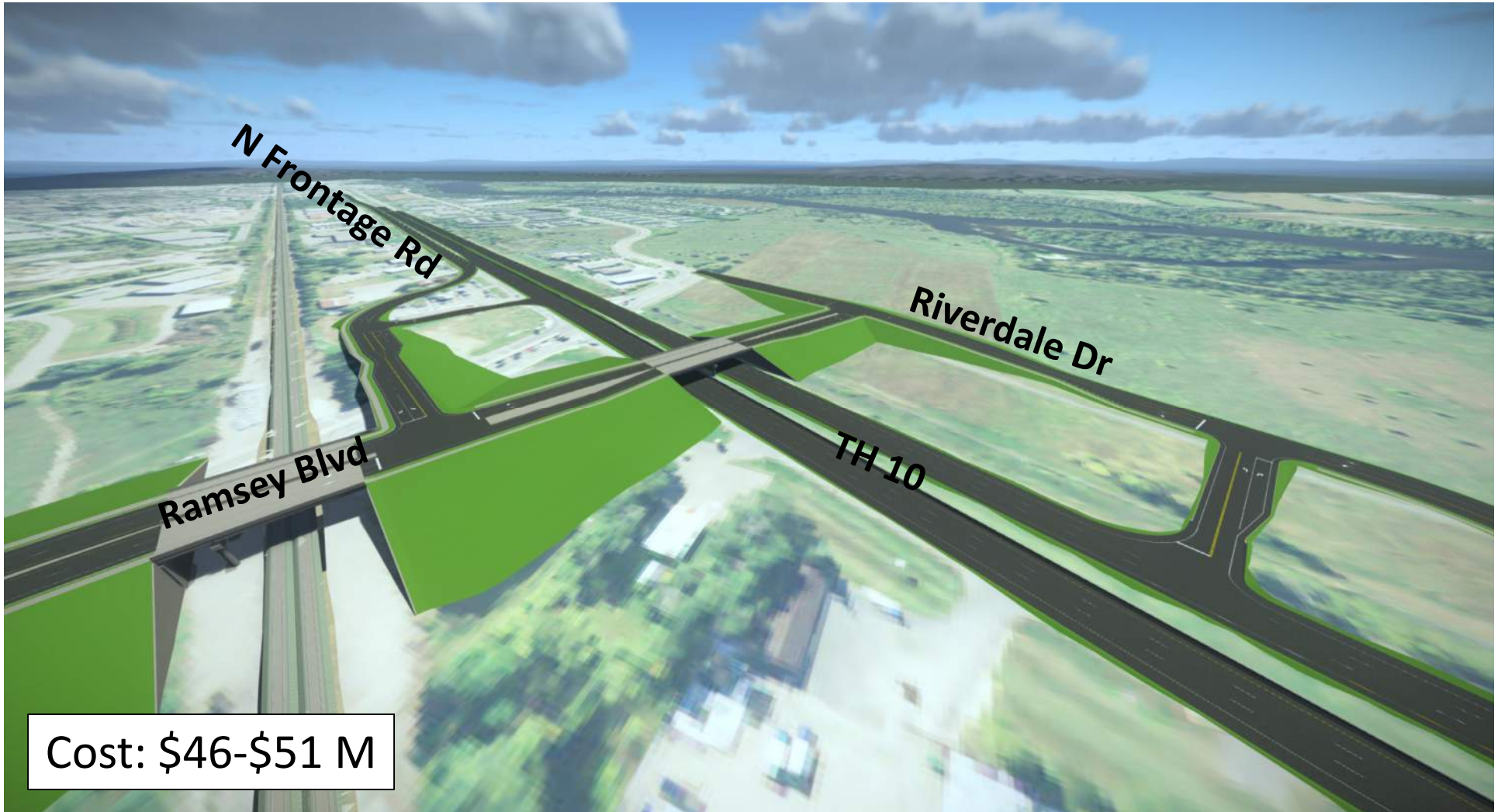
Overpass with Right-In/Right-Out (Option 7A)





Ramsey Blvd Concepts

Overpass with Right-In/Right-Out (Option 7A)

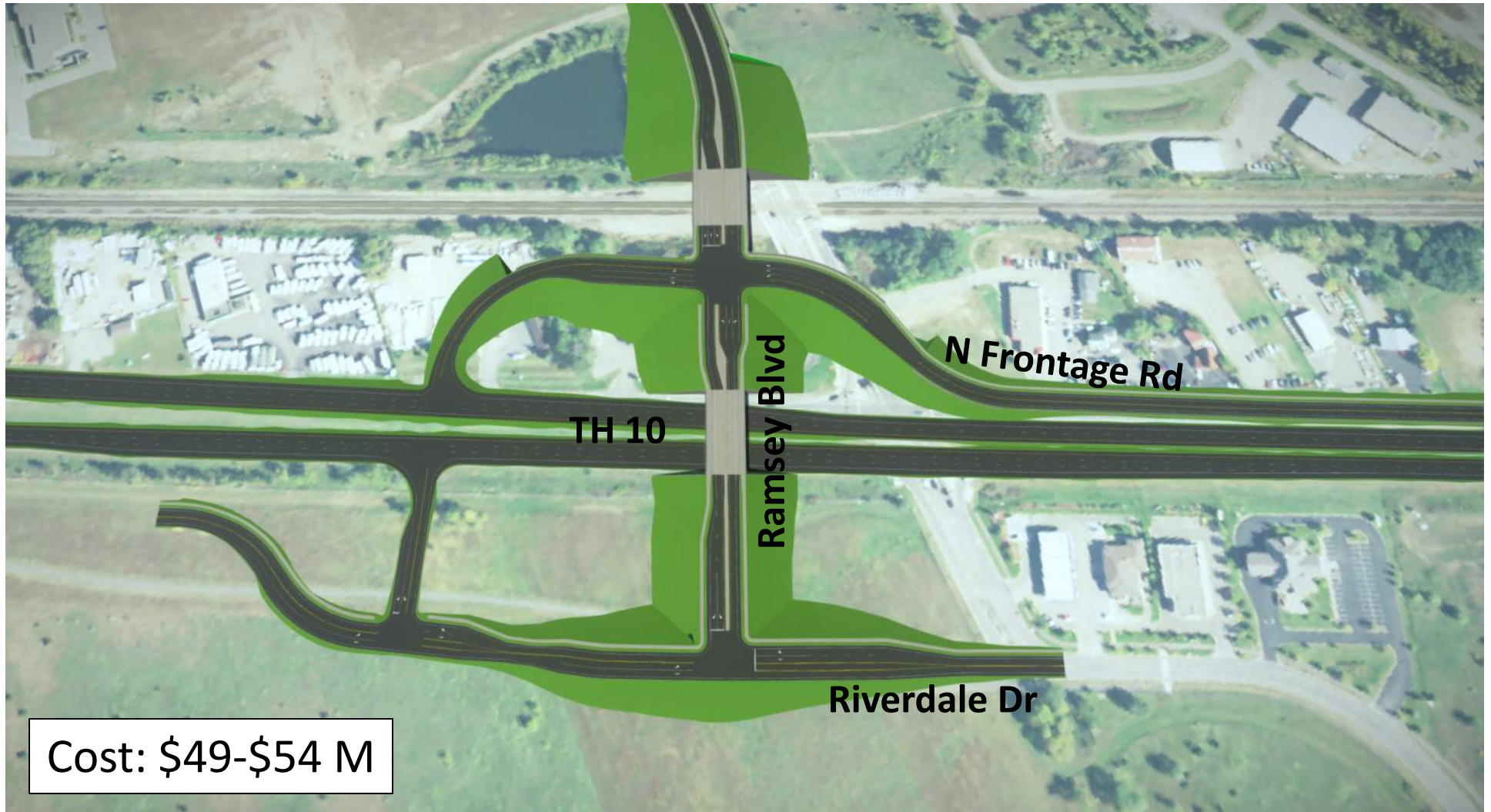




Anoka County
MINNESOTA
Respectful. Innovative. Fiscally Responsible
m DEPARTMENT OF
TRANSPORTATION

Ramsey Blvd Concepts

Overpass with Right-In/Right-Out (Option 7B)



Cost: \$49-\$54 M



Ramsey Blvd Concepts

Overpass with Right-In/Right-Out (Option 7B)

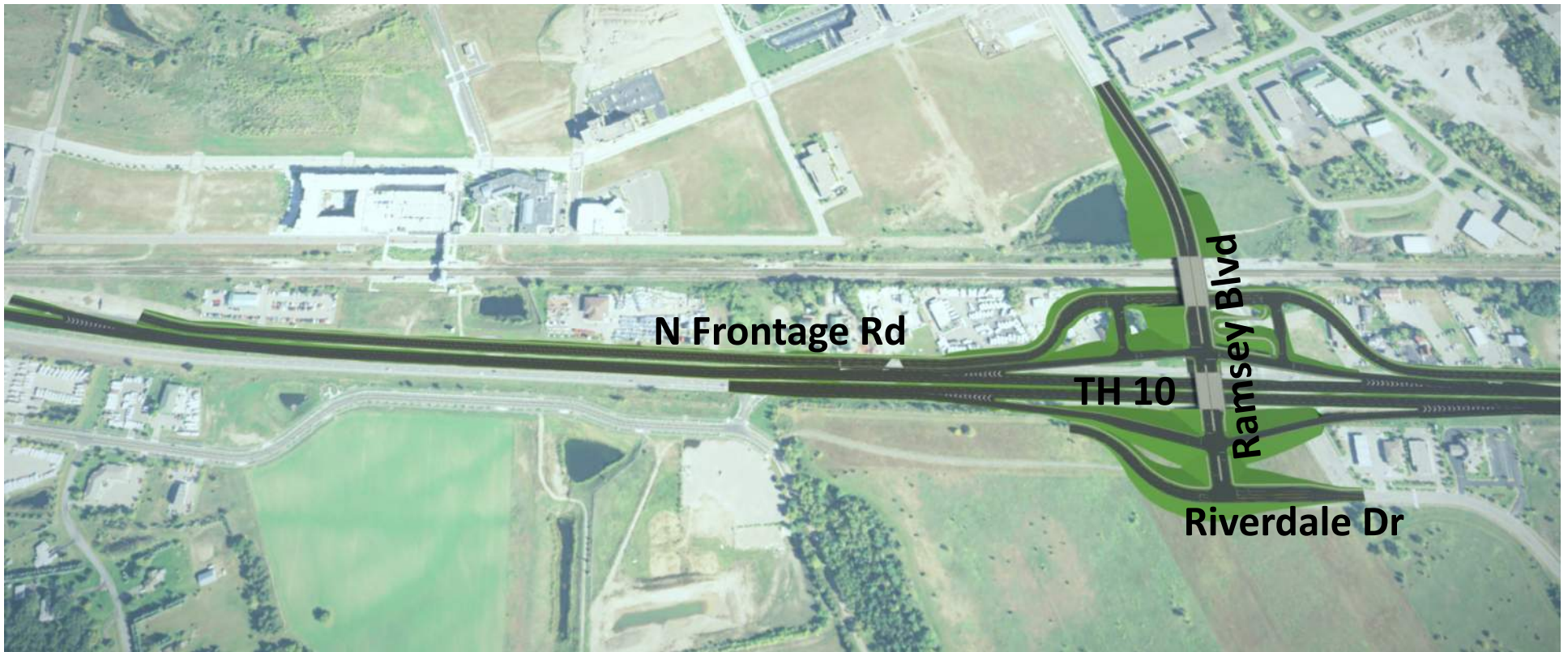


Cost: \$49-\$54 M



Ramsey Blvd Concepts

Tight Diamond with W Frontage Rd (Option 9)



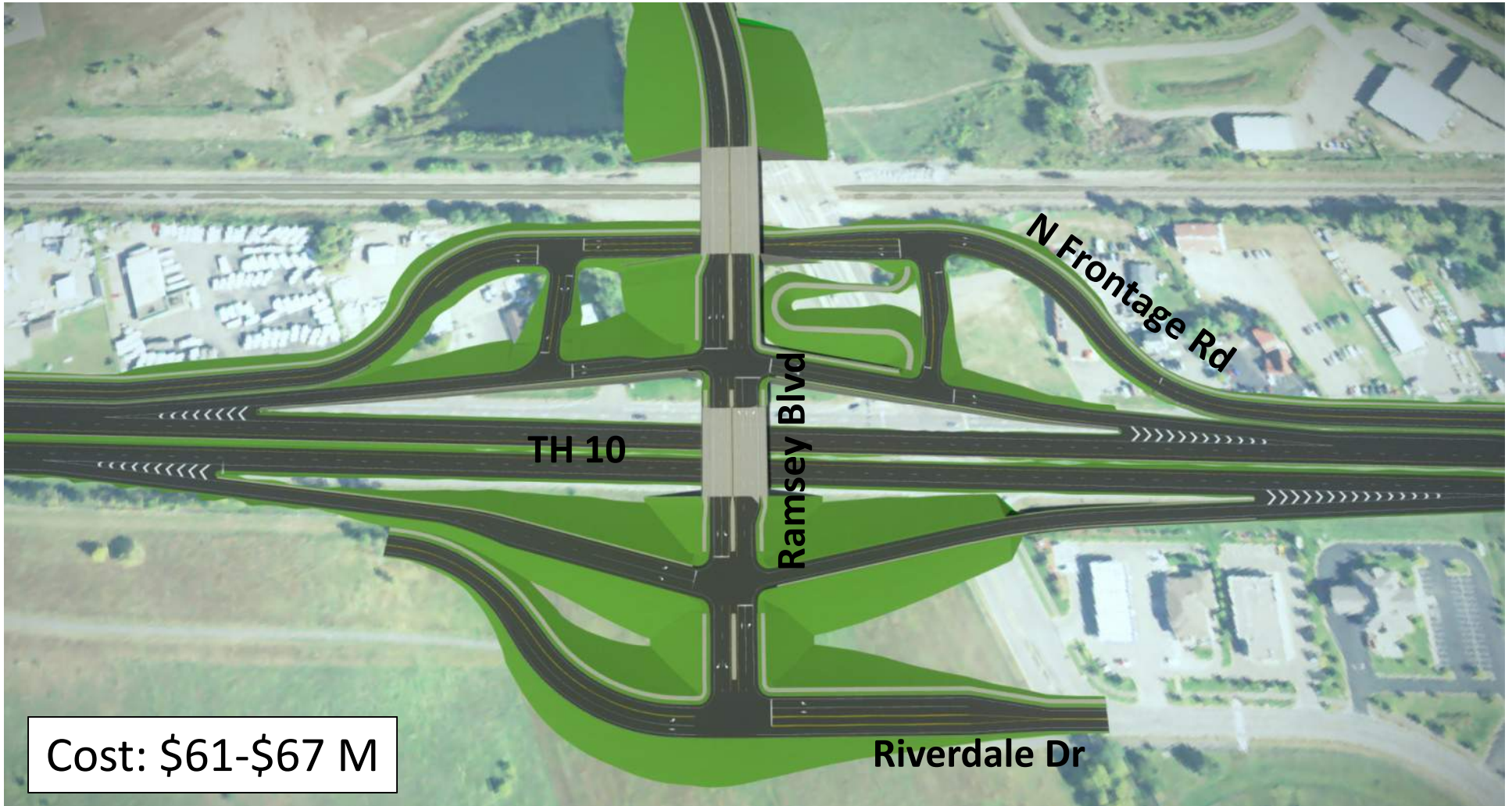
Cost: \$61-\$67 M



Anoka County
MINNESOTA
Respectful. Innovative. Fiscally Responsible.
m DEPARTMENT OF
TRANSPORTATION

Ramsey Blvd Concepts

Tight Diamond with W Frontage Rd (Option 9)





Anoka County
MINNESOTA
Respectful. Innovative. Fiscally Responsible.



DEPARTMENT OF
TRANSPORTATION

Ramsey Blvd Concepts

Tight Diamond with W Frontage Rd (Option 9)





Ramsey Blvd Preliminary Costs

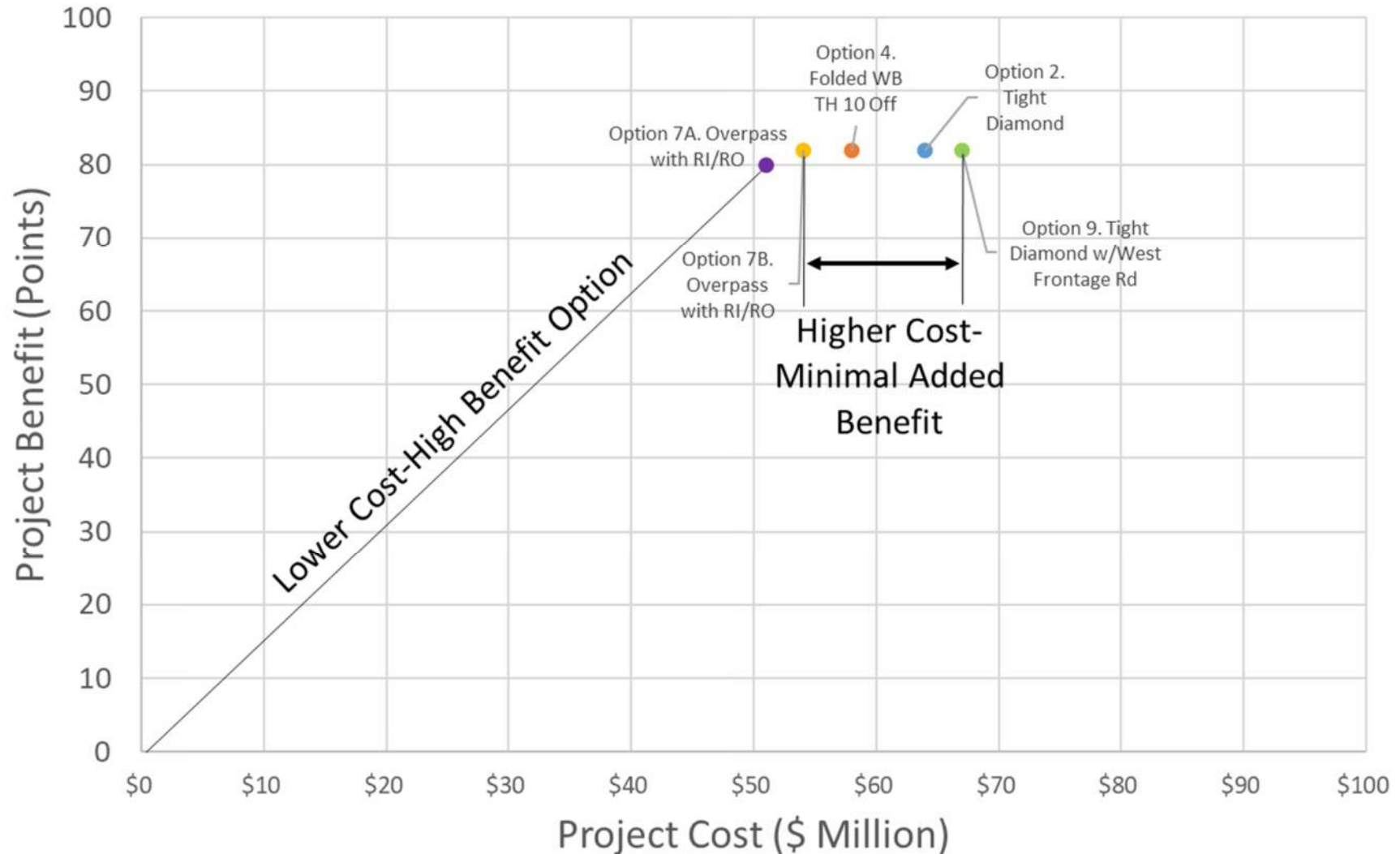
Ramsey Over Cost Estimates	Construction	Right-of-Way	Engineering	TOTAL
Option 2. Tight Diamond	\$34 - \$38 M	\$16 - \$18 M	\$6.8 - \$7.6 M	\$58 - \$64 M
Option 4. Folded WB TH 10 Off	\$30 - \$34 M	\$16 - \$18 M	\$6.1 - \$6.7 M	\$52 - \$58 M
Option 7A. RIRO	\$23 - \$25 M	\$18 - \$20 M	\$4.6 - \$5.0 M	\$46 - \$51 M
Option 7B. RIRO	\$27 - \$30 M	\$16 - \$18 M	\$5.5 - \$6.0 M	\$49 - \$54 M
Option 9. Tight Diamond with W Frontage Rd	\$41 - \$45 M	\$12 - \$13 M	\$8.2 - \$9.0 M	\$61 - \$67 M





Ramsey Blvd Preliminary Costs

Ramsey Options: Cost - Benefit





Frontage Road between Ramsey & Sunfish



- Cost: \$12 - \$14 M



Sunfish Lake Blvd Concepts

- Railroad Grade Separation:
 - Sunfish Overpass with Right-In/Right-Out
- At-Grade Rail Options:
 - Grade-Separated Roundabout
 - Center Turn Overpass
 - Hwy 10 Overpass with Right-In/Right-Out
 - One option with full movement
 - One option with limited movement



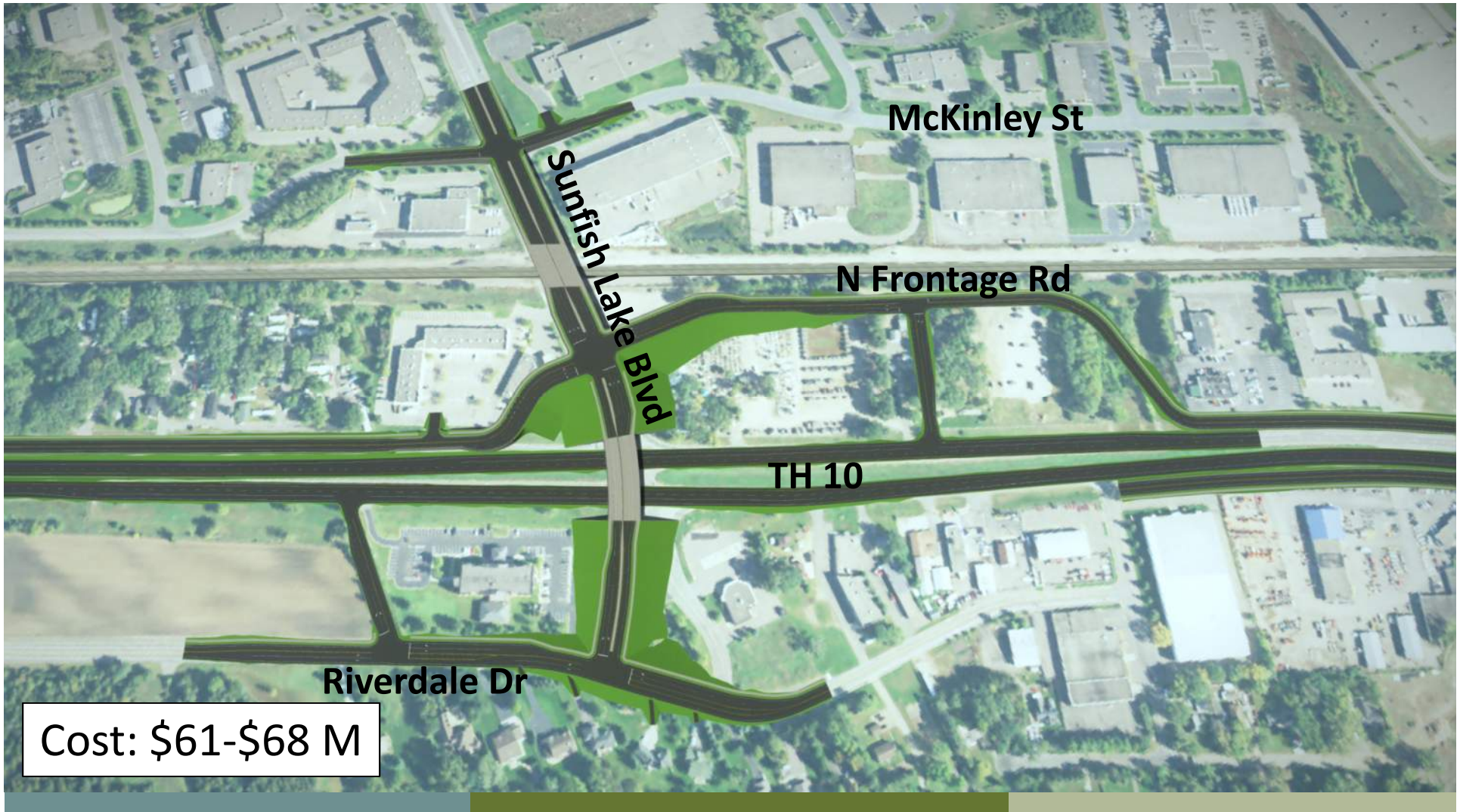


Sunfish Lake Blvd Concepts



Anoka County
MINNESOTA
Respectful. Innovative. Fiscally Responsible.
m DEPARTMENT OF
TRANSPORTATION

Overpass with Right-In/Right-Out (Option 1A) Rail Grade Separation



Cost: \$61-\$68 M

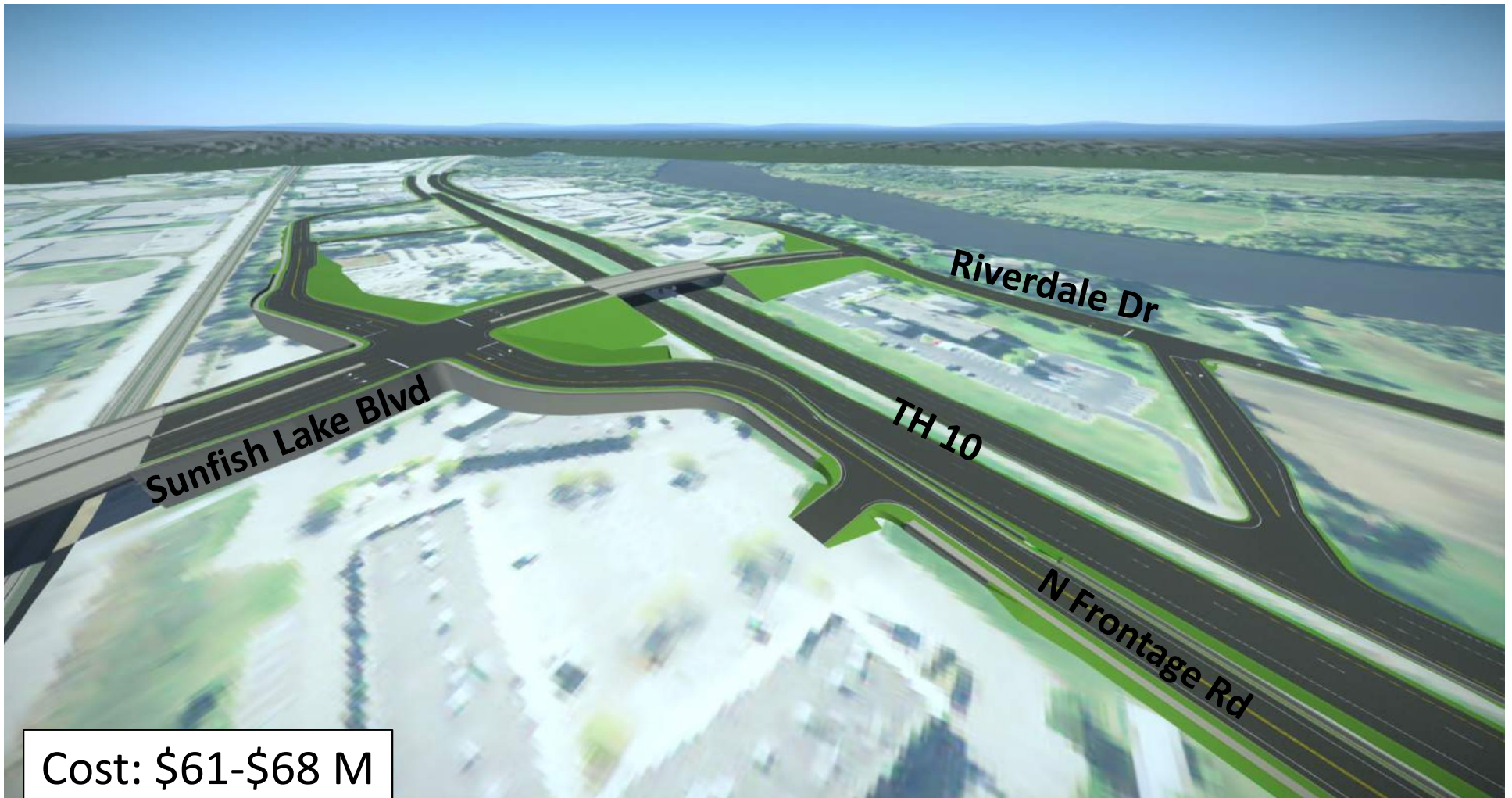


Sunfish Lake Blvd Concepts



Anoka County
MINNESOTA
Respectful. Innovative. Fiscally Responsible.
m DEPARTMENT OF
TRANSPORTATION

Overpass with Right-In/Right-Out (Option 1A) Rail Grade Separation



Cost: \$61-\$68 M



Sunfish Lake Blvd Concepts



Anoka County
MINNESOTA
Respectful. Innovative. Fiscally Responsible.
m DEPARTMENT OF
TRANSPORTATION

Overpass with Right-In/Right-Out (Option 1B)
Rail Grade Separation



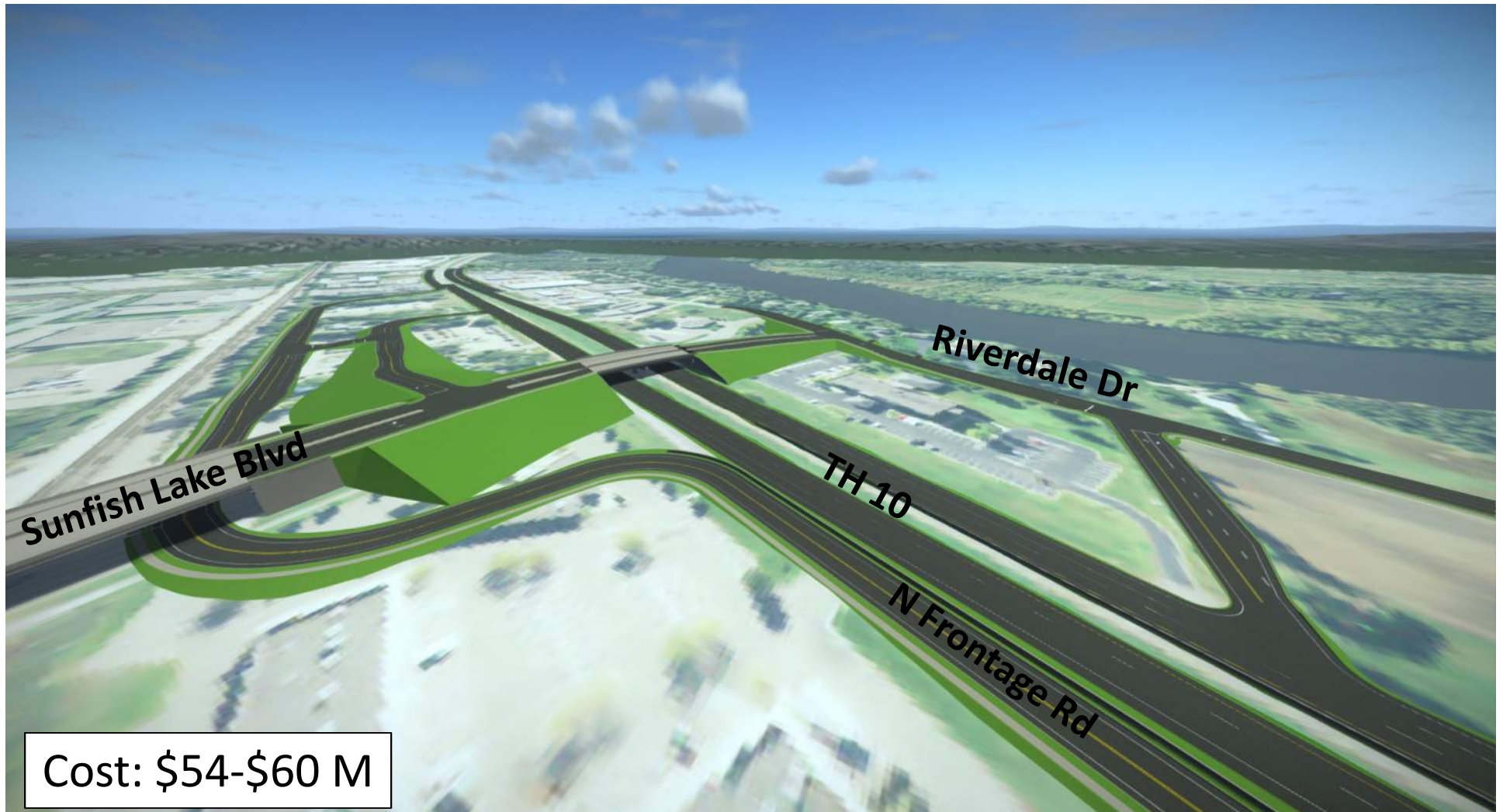


Sunfish Lake Blvd Concepts



Anoka County
MINNESOTA
Respectful. Innovative. Fiscally Responsible.
m DEPARTMENT OF
TRANSPORTATION

Overpass with Right-In/Right-Out (Option 1B)
Rail Grade Separation



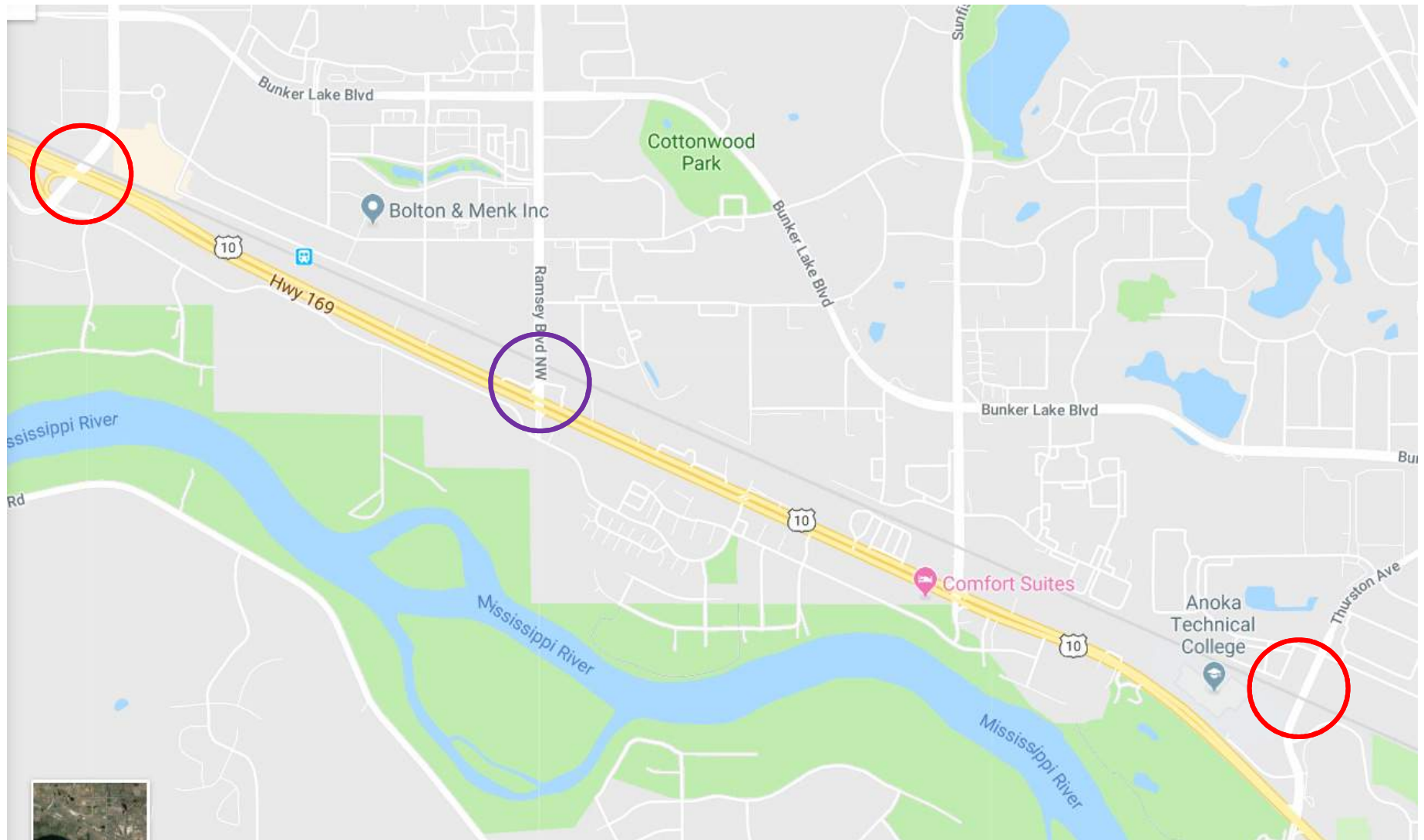
Cost: \$54-\$60 M



Existing & Proposed Rail Grade Separation



Anoka County
MINNESOTA
Respectful. Innovative. Fiscally Responsible.



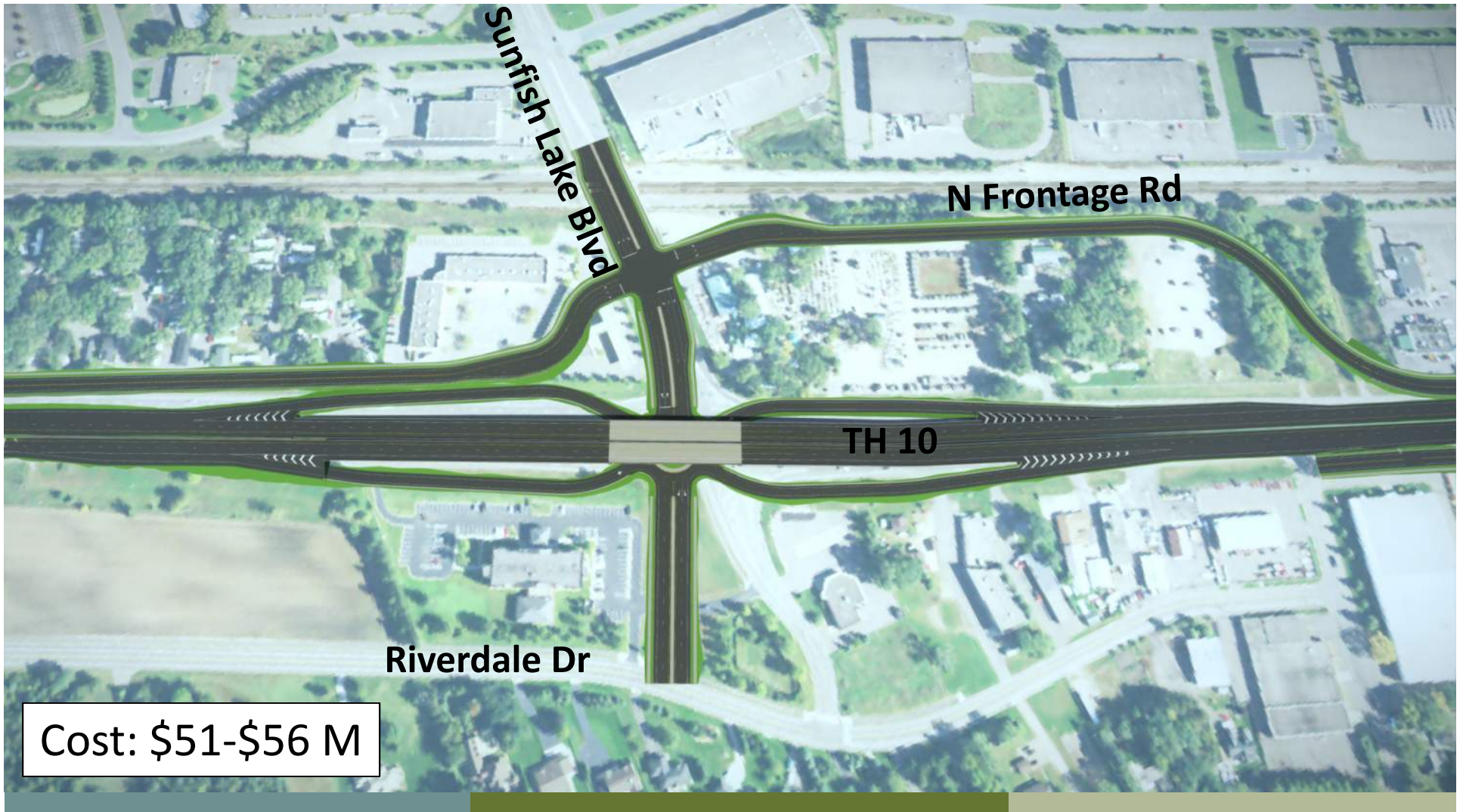


Sunfish Lake Blvd Concepts



Anoka County
MINNESOTA
Respectful. Innovative. Fiscally Responsible.
m DEPARTMENT OF
TRANSPORTATION

Grade Separated Roundabout (Option 5B)
At-Grade Rail



Cost: \$51-\$56 M

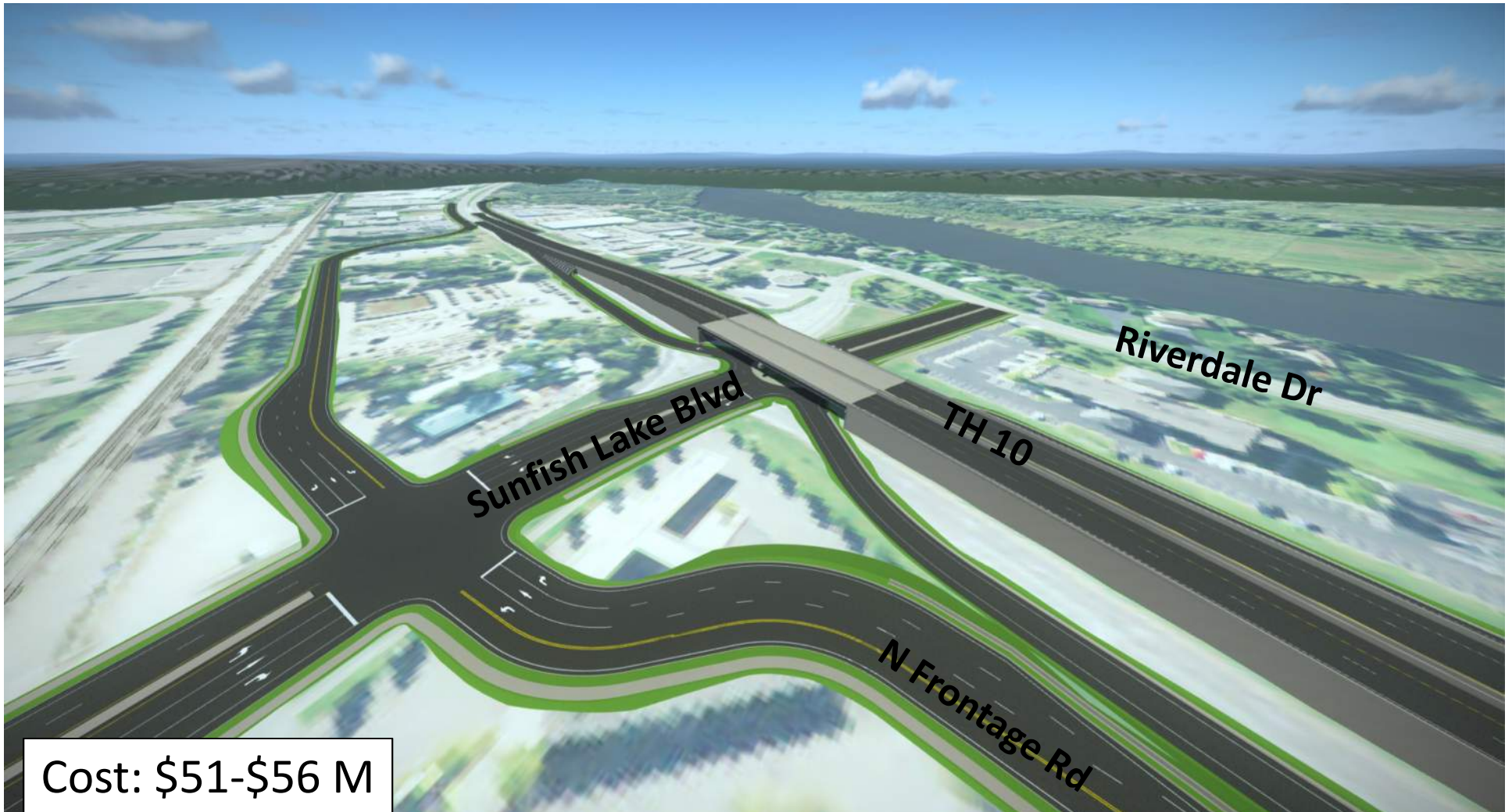


Sunfish Lake Blvd Concepts



Anoka County
MINNESOTA
Respectful. Innovative. Fiscally Responsible.
m DEPARTMENT OF
TRANSPORTATION

Grade Separated Roundabout (Option 5B)
At-Grade Rail



Cost: \$51-\$56 M



Sunfish Lake Blvd Concepts

Center Turn Overpass (Option 6B)

At-Grade Rail



Anoka County
MINNESOTA
Respectful. Innovative. Fiscally Responsible
m DEPARTMENT OF
TRANSPORTATION



Cost: \$59-\$65 M



Sunfish Lake Blvd Concepts

Center Turn Overpass (Option 6B)

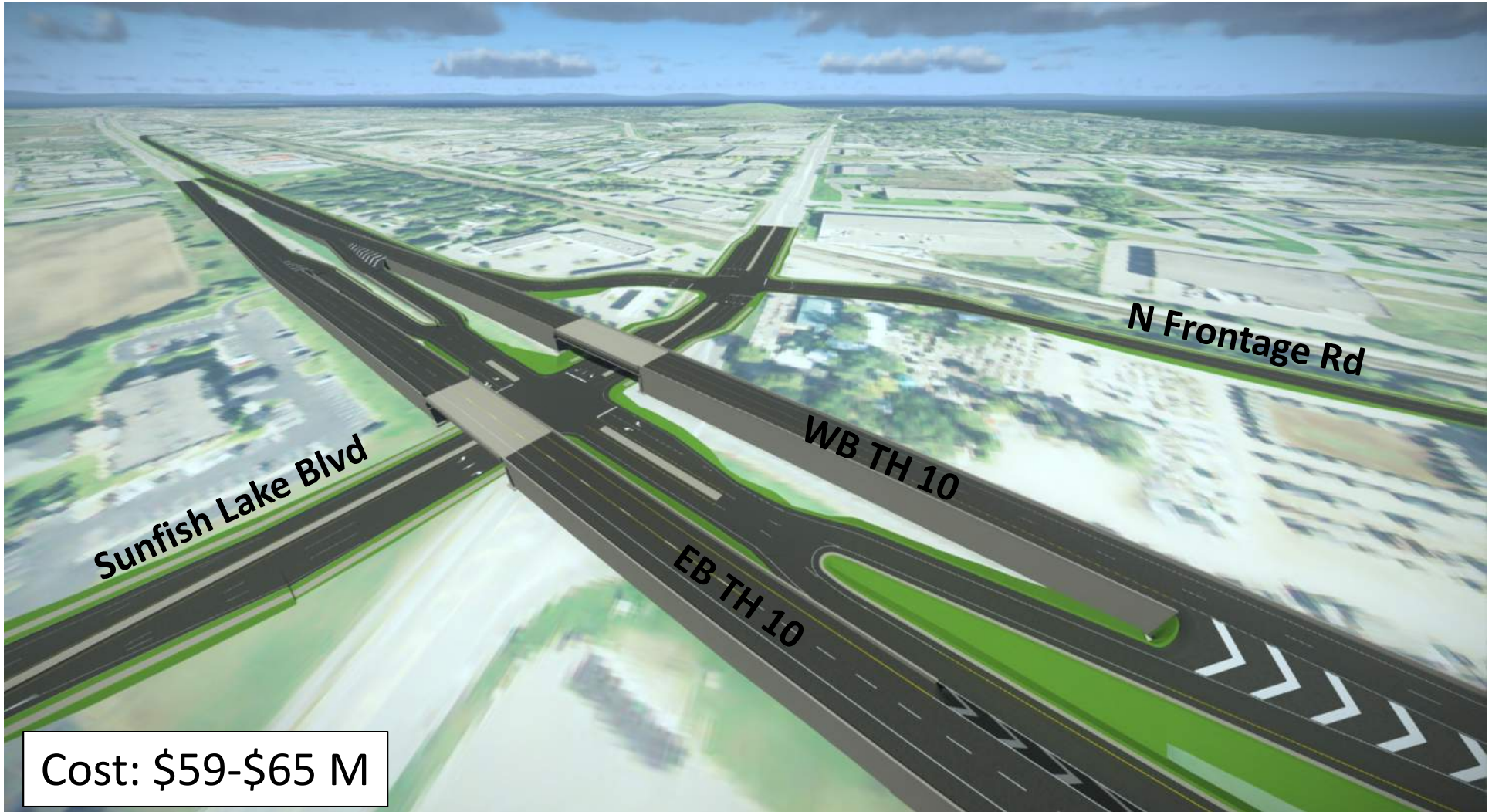
At-Grade Rail



Anoka County
MINNESOTA
Respectful. Innovative. Fiscally Responsible.



DEPARTMENT OF
TRANSPORTATION



Cost: \$59-\$65 M

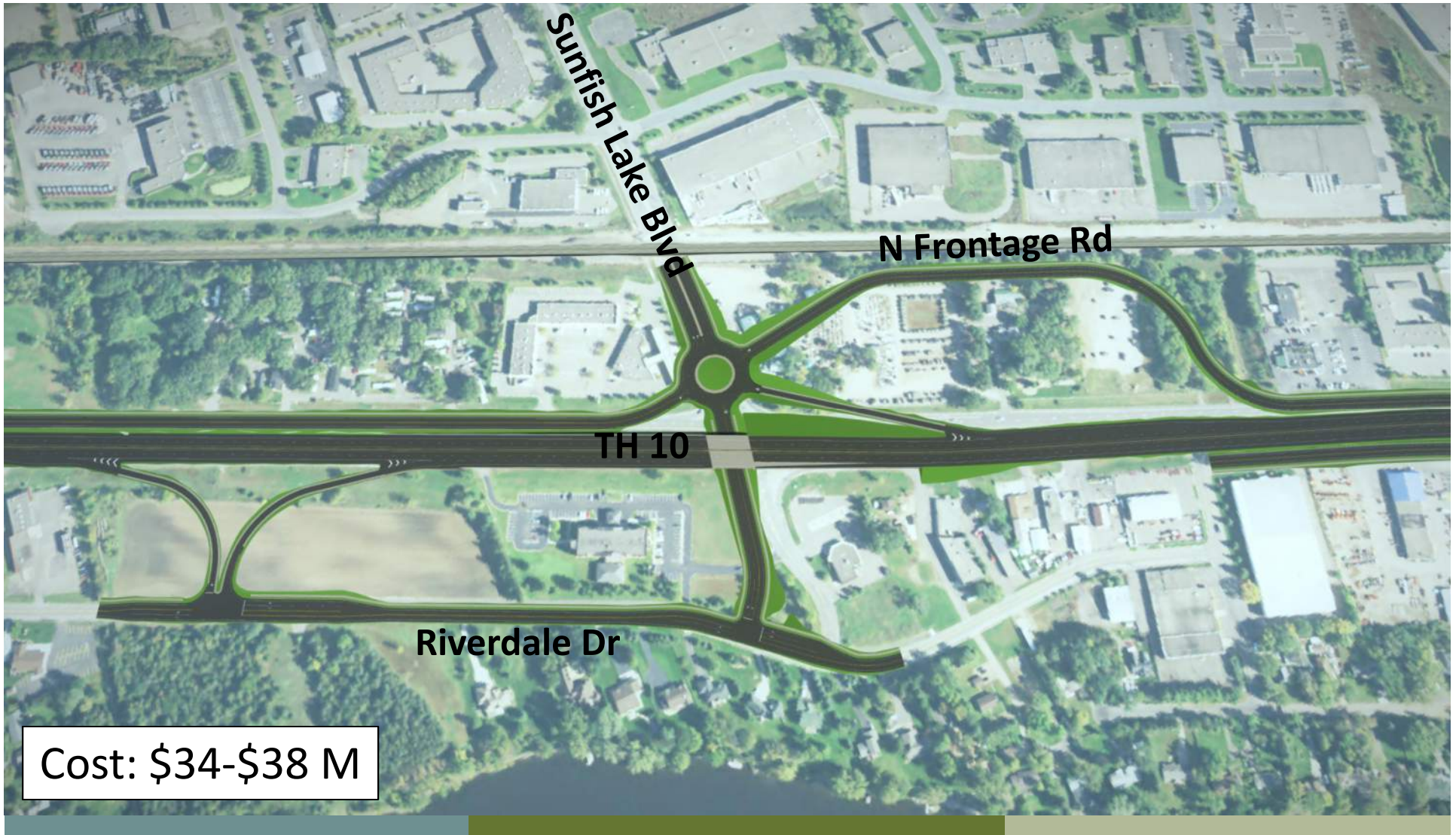


Sunfish Lake Blvd Concepts



Anoka County
MINNESOTA
Respectful. Innovative. Fiscally Responsible.
m DEPARTMENT OF
TRANSPORTATION

Right-In/Right-Out with WB Exit Ramp (Option 9A)
At-Grade Rail



Cost: \$34-\$38 M

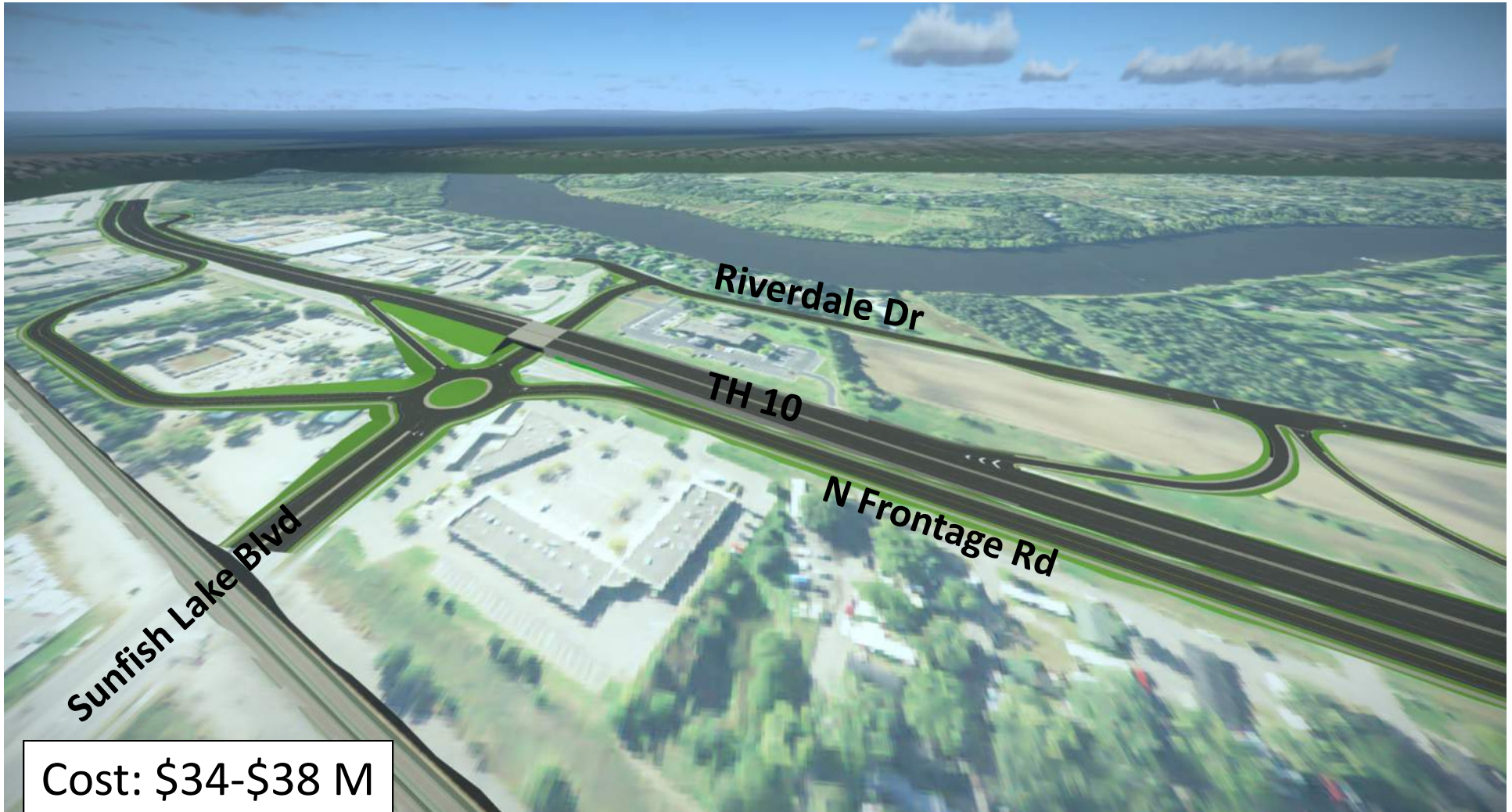


Sunfish Lake Blvd Concepts



Anoka County
MINNESOTA
Respectful. Innovative. Fiscally Responsible.
m DEPARTMENT OF
TRANSPORTATION

Right-In/Right-Out with WB Exit Ramp (Option 9A)
At-Grade Rail





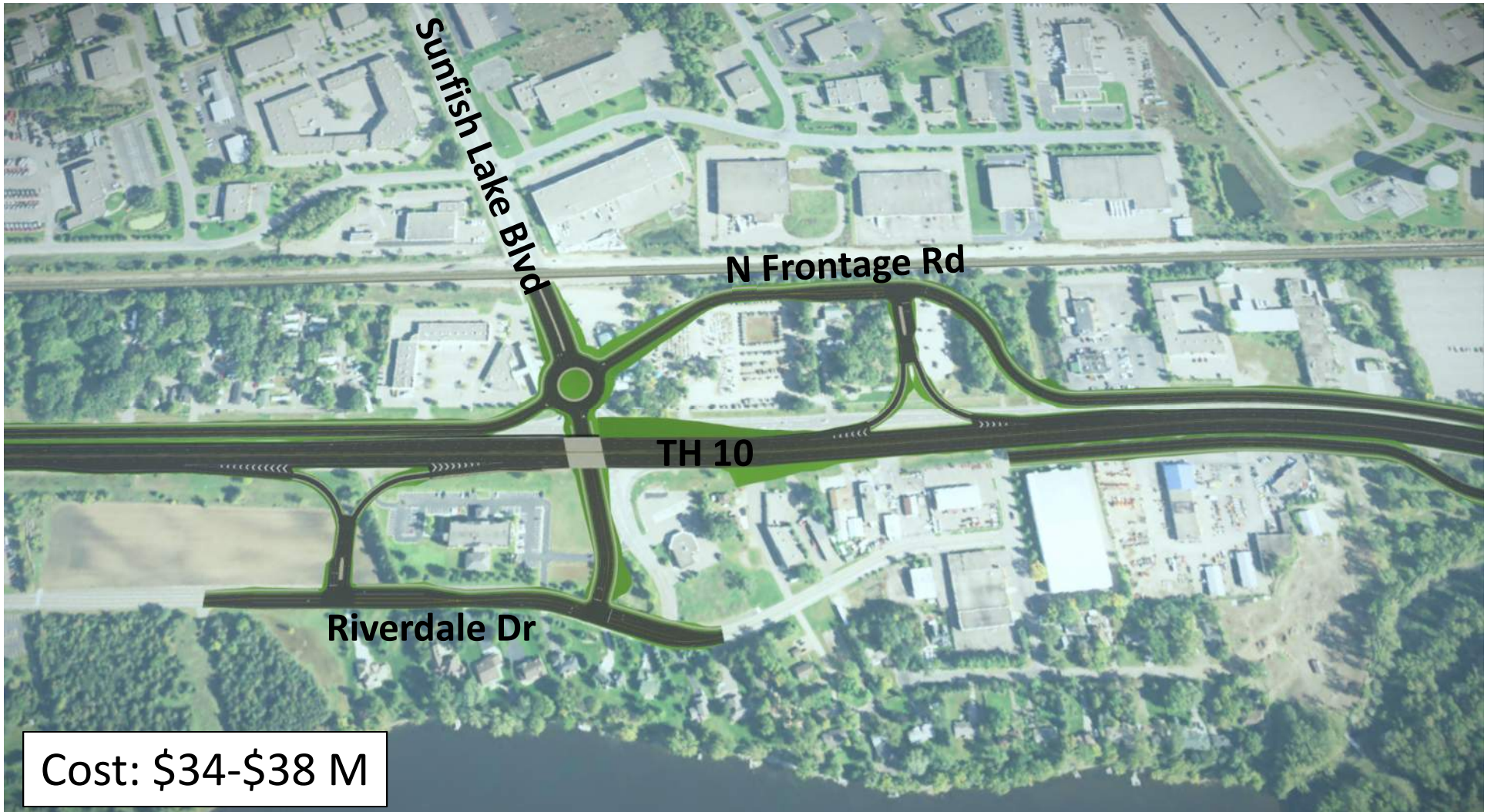
Sunfish Lake Blvd Concepts

Right-In/Right-Out (Option 9B)

At-Grade Rail



Anoka County
MINNESOTA
Respectful. Innovative. Fiscally Responsible.



Cost: \$34-\$38 M



Sunfish Lake Blvd Concepts

Right-In/Right-Out (Option 9B)

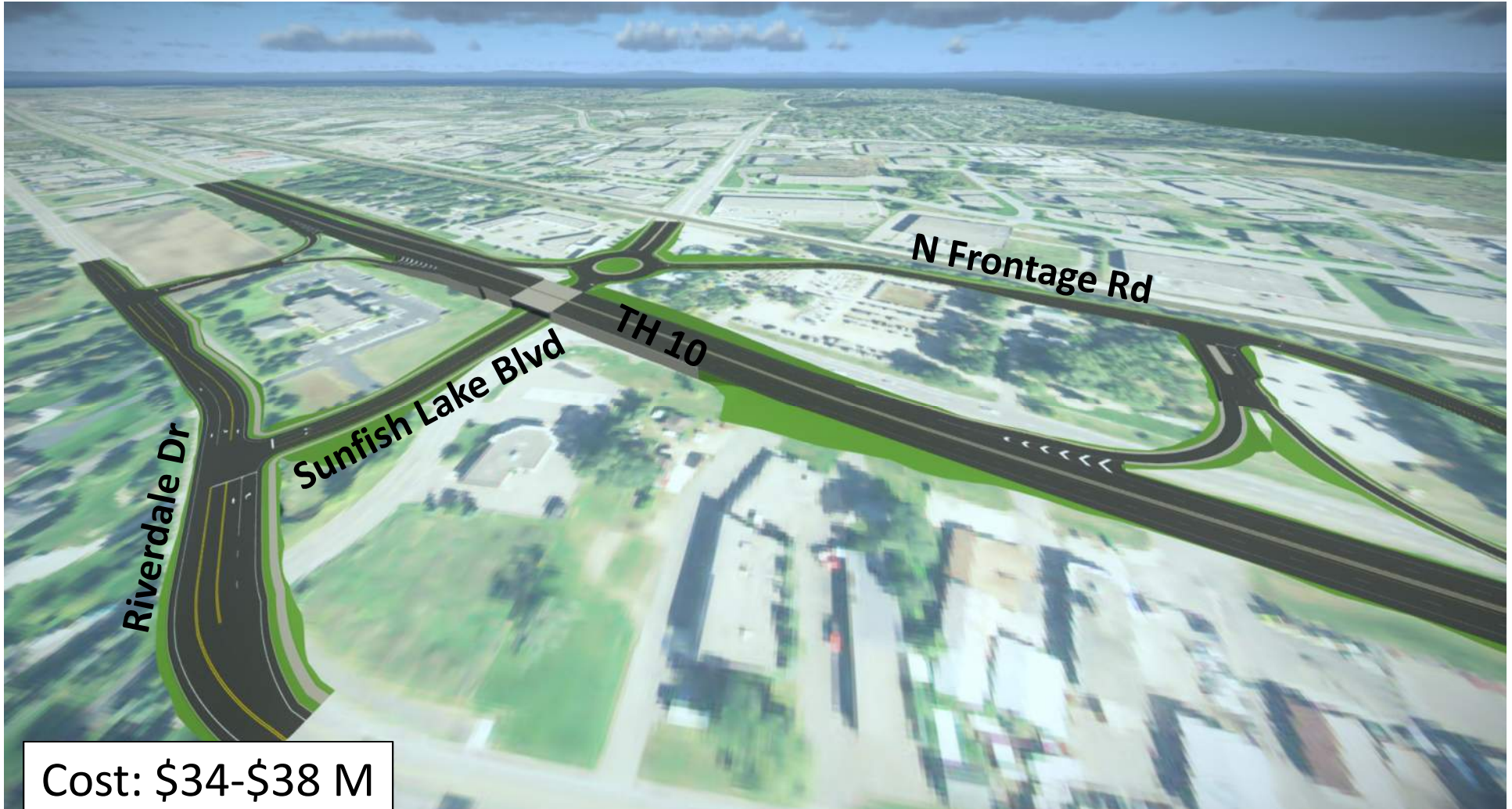
At-Grade Rail



Anoka County
MINNESOTA
Respectful. Innovative. Fiscally Responsible.



DEPARTMENT OF
TRANSPORTATION



Cost: \$34-\$38 M

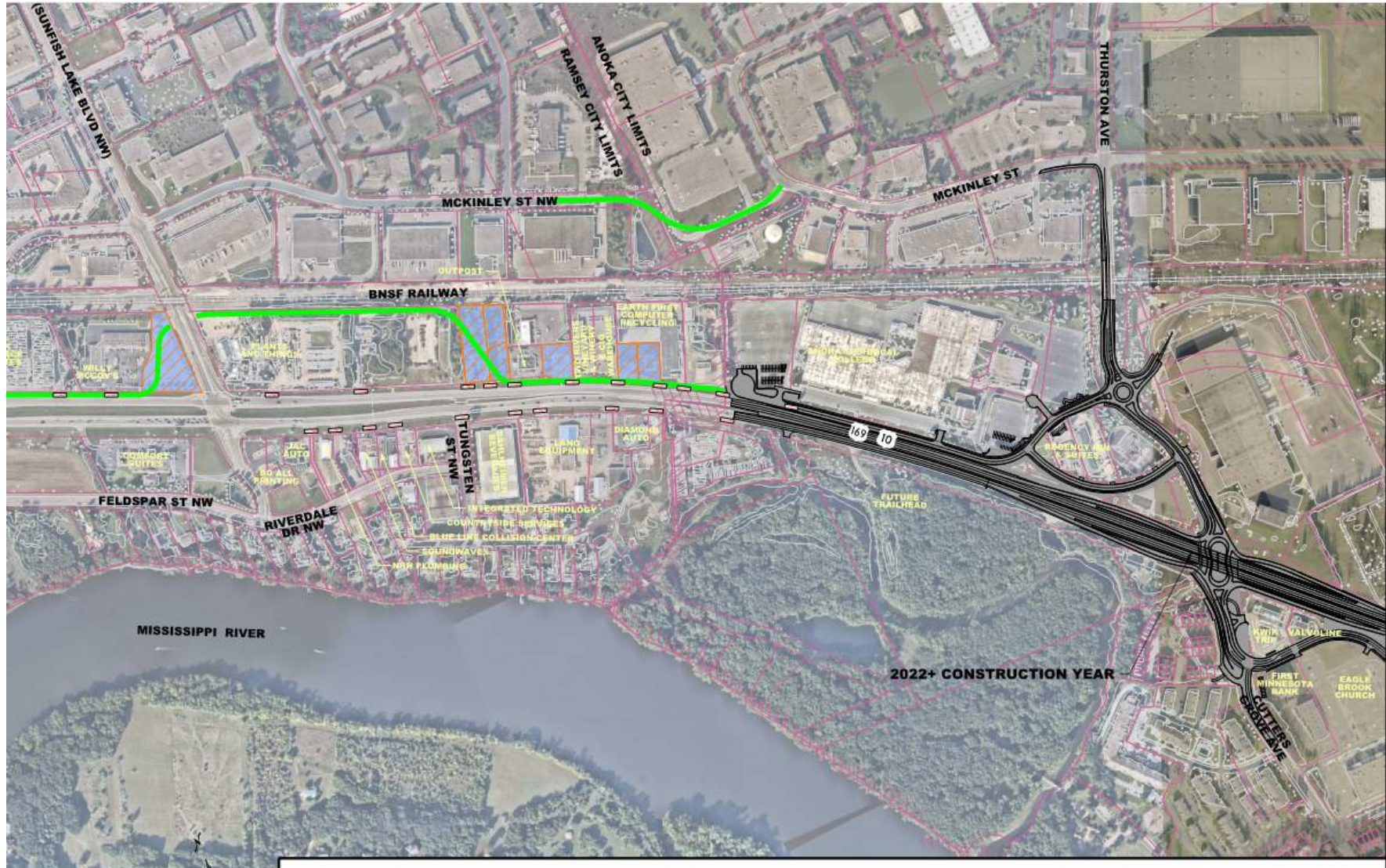


Frontage Road Option



- **Total Cost: \$2.4 M**
 - Construction: \$1.4 M
 - ROW: \$700k
 - Engineering: \$300k

Anoka Solution





Sunfish Lake Blvd Preliminary Costs

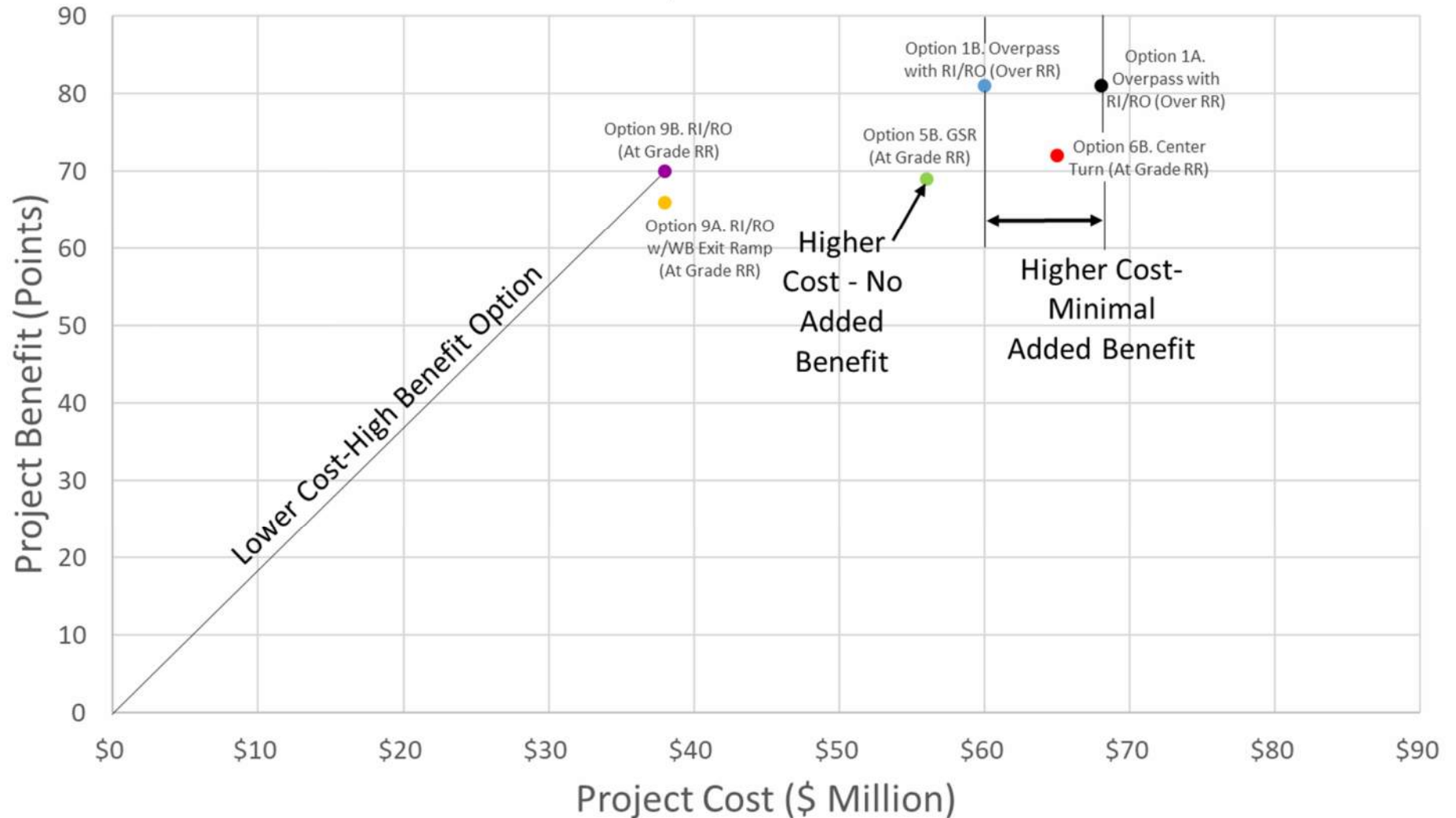
Sunfish Cost Estimates	Construction	Right-of-Way	Engineering	TOTAL
Option 1A. RIRO (Over RR)	\$41 - \$46 M	\$12 - \$13 M	\$8.3 - \$9.1 M	\$61 - \$68 M
Option 1B. RIRO (Over RR)	\$35 - \$39M	\$12 - \$13 M	\$7.1 - \$7.8 M	\$54 - \$60 M
Option 5B. GSR (At Grade RR)	\$33 - \$36 M	\$12 - \$13 M	\$6.5 - \$7.2 M	\$51 - \$56 M
Option 6B. Center Turn (At Grade RR)	\$40 - \$44 M	\$11 - \$12 M	\$7.9 - \$8.8 M	\$59 - \$65 M
Option 9A. RIRO w/WB Exit Ramp (At Grade RR)	\$19 - \$21 M	\$11 - \$12 M	\$3.8 - \$4.2 M	\$34 - \$38 M
Option 9B. RIRO (At Grade RR)	\$19 - \$21 M	\$11 - \$12 M	\$3.9 - \$4.3 M	\$34 - \$38 M





Sunfish Lake Blvd Preliminary Costs

Sunfish Options: Cost - Benefit





Range of Total Cost – East End

Both Grade Separated Rail

TOTAL COST:

Ramsey (RR Grade Separated)
Sunfish (RR Grade Separated)
Frontage Rd (Ramsey to Sunfish)

\$112 - \$149 M

One At-Grade Rail

TOTAL COST:

Ramsey (RR Grade Separated)
Sunfish (At Grade RR)
Frontage Rd (Ramsey to Sunfish)

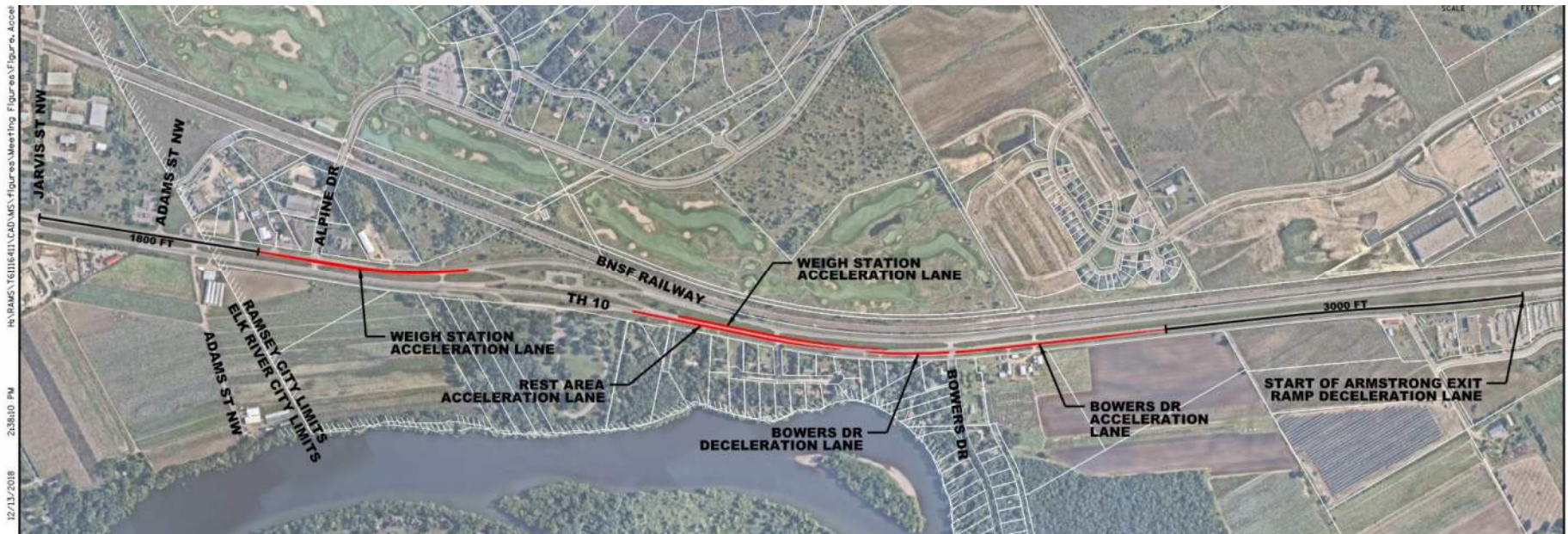
\$92 - \$146 M



West End Concepts



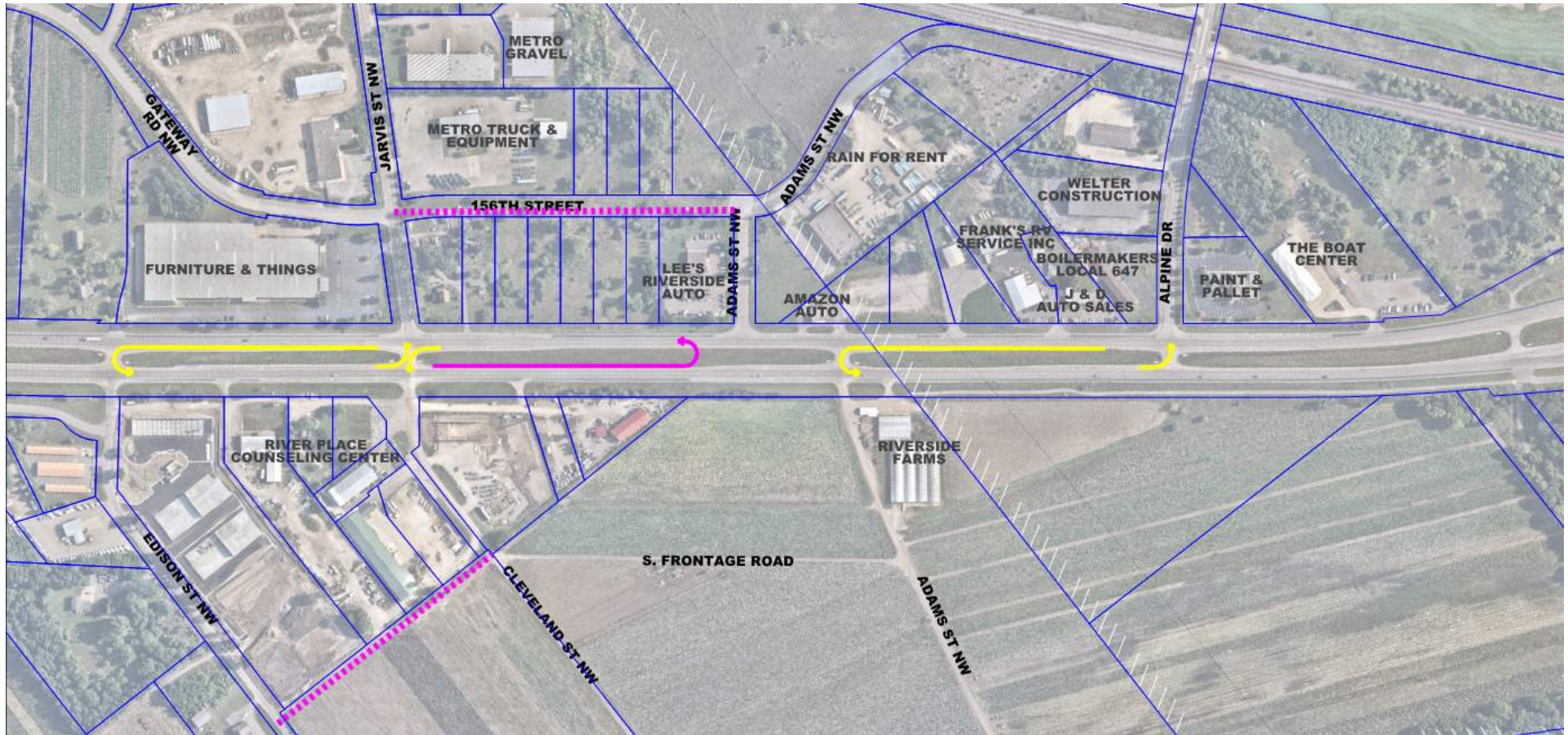
- Interim Option – Unsignalized RCTs at Jarvis & Alpine
- Document Alternatives Studied (signalized RCUT, overpass)
- Future Joint Study (MnDOT D3, Metro and Cities)
 - Determine Hwy 10 corridor vision into Elk River





Interim Option

Unsignalized RCUTs at Jarvis and Alpine



- Total Cost: ~\$1 M

- Minor Reconstruction
- New Turn Lane
- ... Possible Roadway Connection



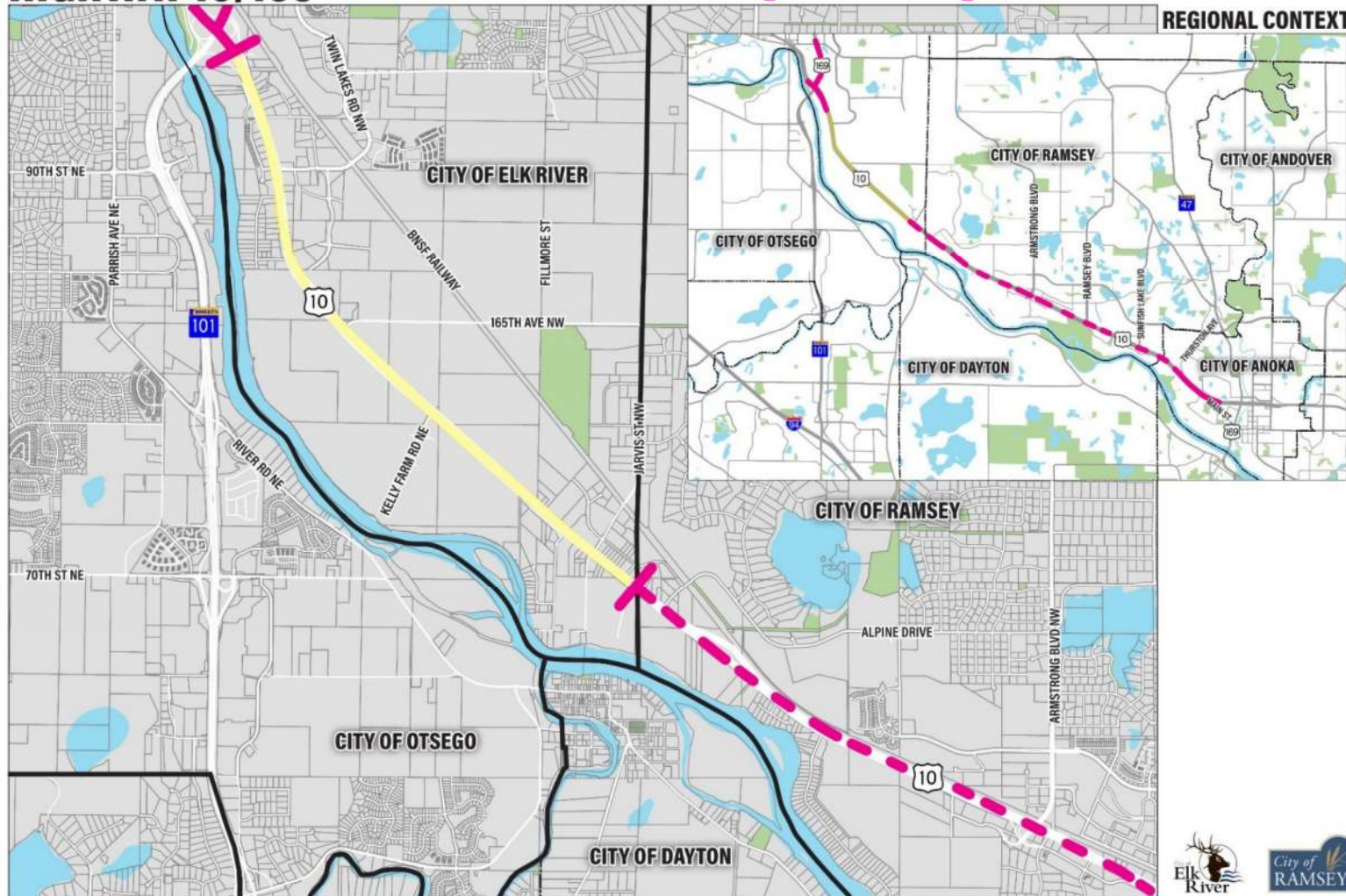
Future Study



Anoka County
MINNESOTA
Respectful. Innovative. Fiscally Responsible.
m DEPARTMENT OF
TRANSPORTATION

HIGHWAY 10/169

— CITY LIMITS UNDER STUDY FUNDED PROJECT





Elk River Future Roadway Network



Figure 6-10. Future Functional Classification





Elk River Future Land Use

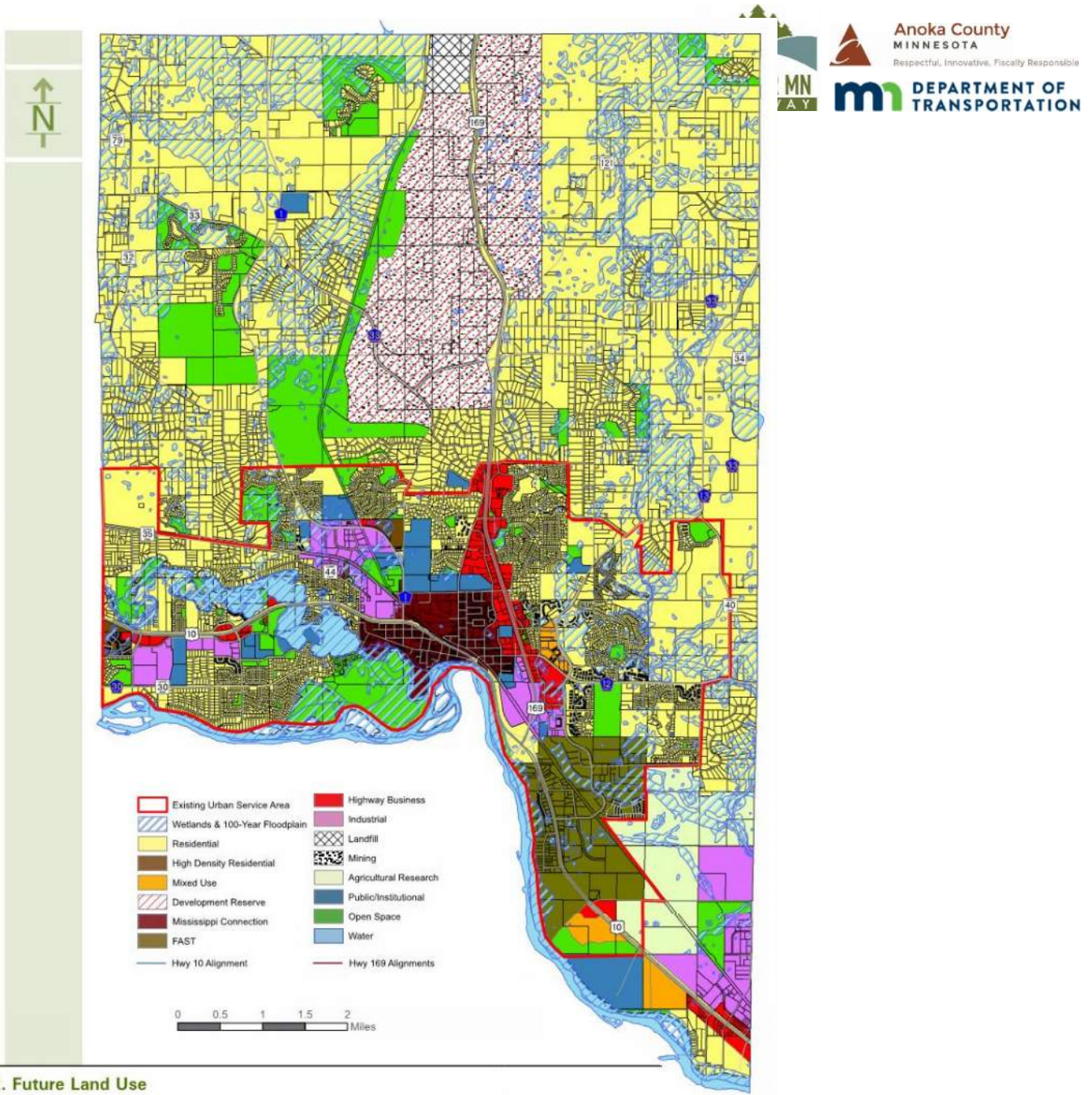


Figure 5-2. Future Land Use



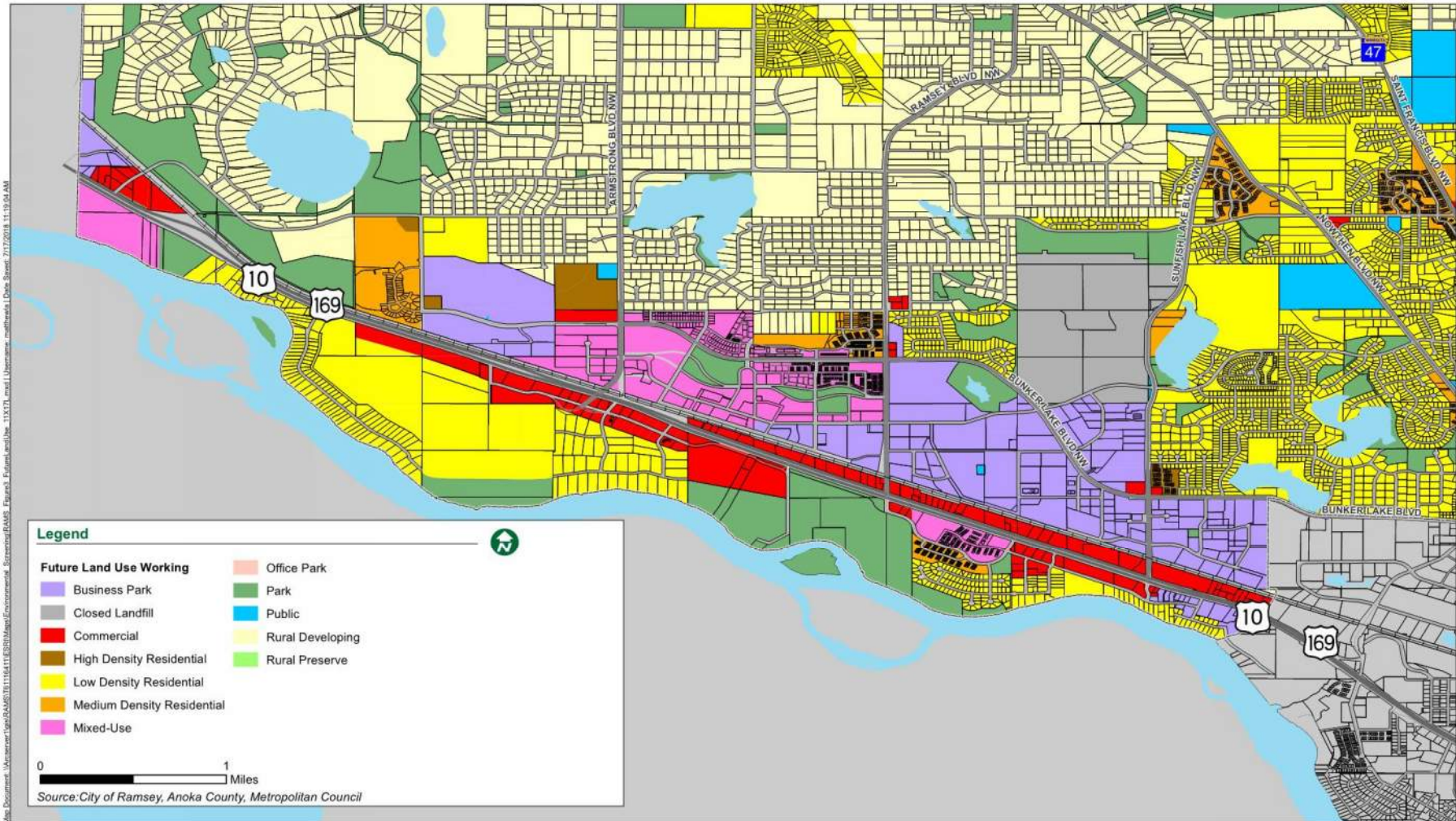


Ramsey Future Land Use



Anoka County
MINNESOTA
Respectful. Innovative. Fiscally Responsible

m DEPARTMENT OF
TRANSPORTATION





Public Involvement Plan

- Steering Committee – April
- Property Owner Meetings – April/May
- Open House/Input ID – May
- Next TAC Meeting - June

