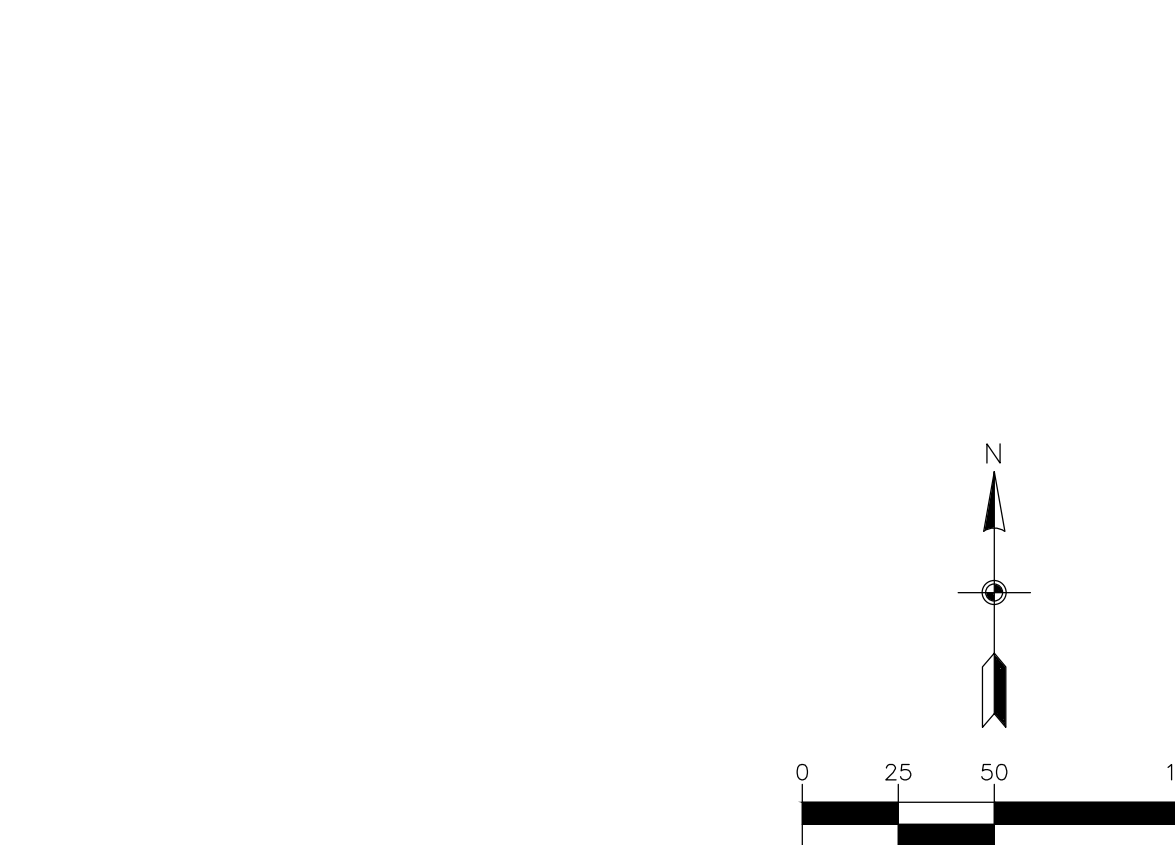
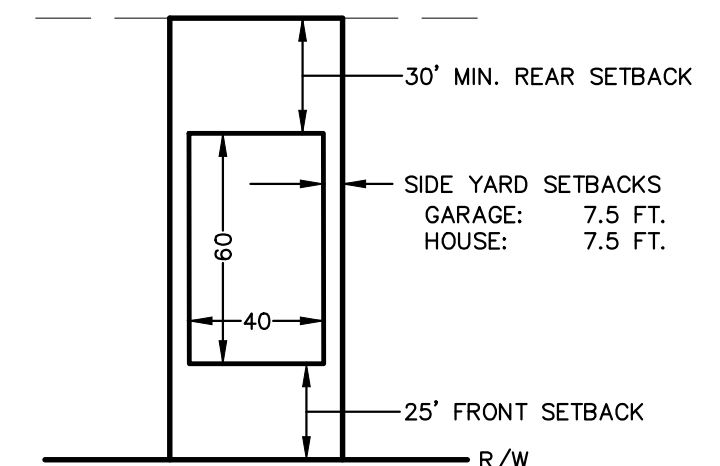


SITE PLAN LEGEND

	EXISTING	PROPOSED
LIGHT POLE		
SANITARY MANHOLE		
MISCELLANEOUS SIGN		
EXISTING SPOT ELEVATION		
EXISTING TREE		
TELEVISION BOX		
FIRE HYDRANT		
FLUSHING HYDRANT		
GATE VALVE		
CLEANOUT		
ELECTRIC BOX		
GAS METER		
CATCH BASIN		
RAIN GUARDIAN		
ELECTRIC METER		
TELEPHONE BOX		
UTILITY POLE		
FLARED END SECTION (W/ RIP RAP)		
STORM MANHOLE		
BREAKAWAY BOLLARD SERVICE		
SOIL BORING/TEST HOLE		
RETAINING WALL		
WATERMAIN		
SANITARY SEWER		
FORCEMAIN		
STORM SEWER		
PROPERTY LINE		
SETBACK LINE		
CURB		
WATER LINE		
WETLAND		
DITCH		
TREE LINE		
UNDERGROUND TELEPHONE		
UNDERGROUND ELECTRIC		
UNDERGROUND GAS		
UNDERGROUND FIBEROPTIC		
FENCE		
OVERHEAD ELECTRIC		
CONCRETE SURFACE		
BITUMINOUS SURFACE		
MAINTENANCE ACCESS		
INFILTRATION BASIN		
FEMA FLOODWAY		
FEMA FLOODPLAIN		

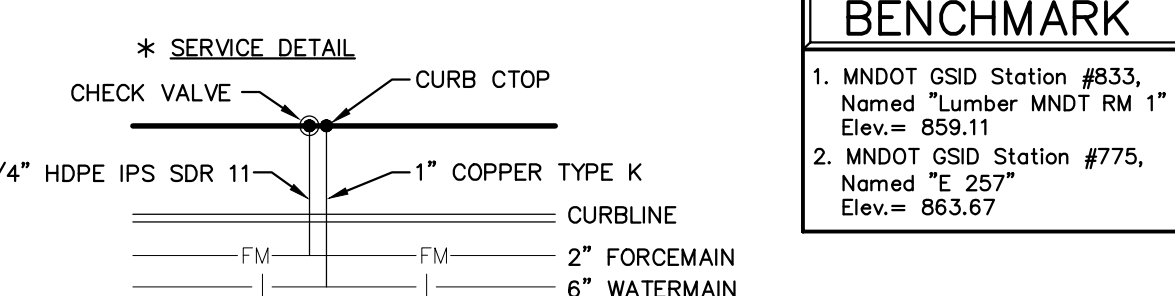


50' LOT DETAIL

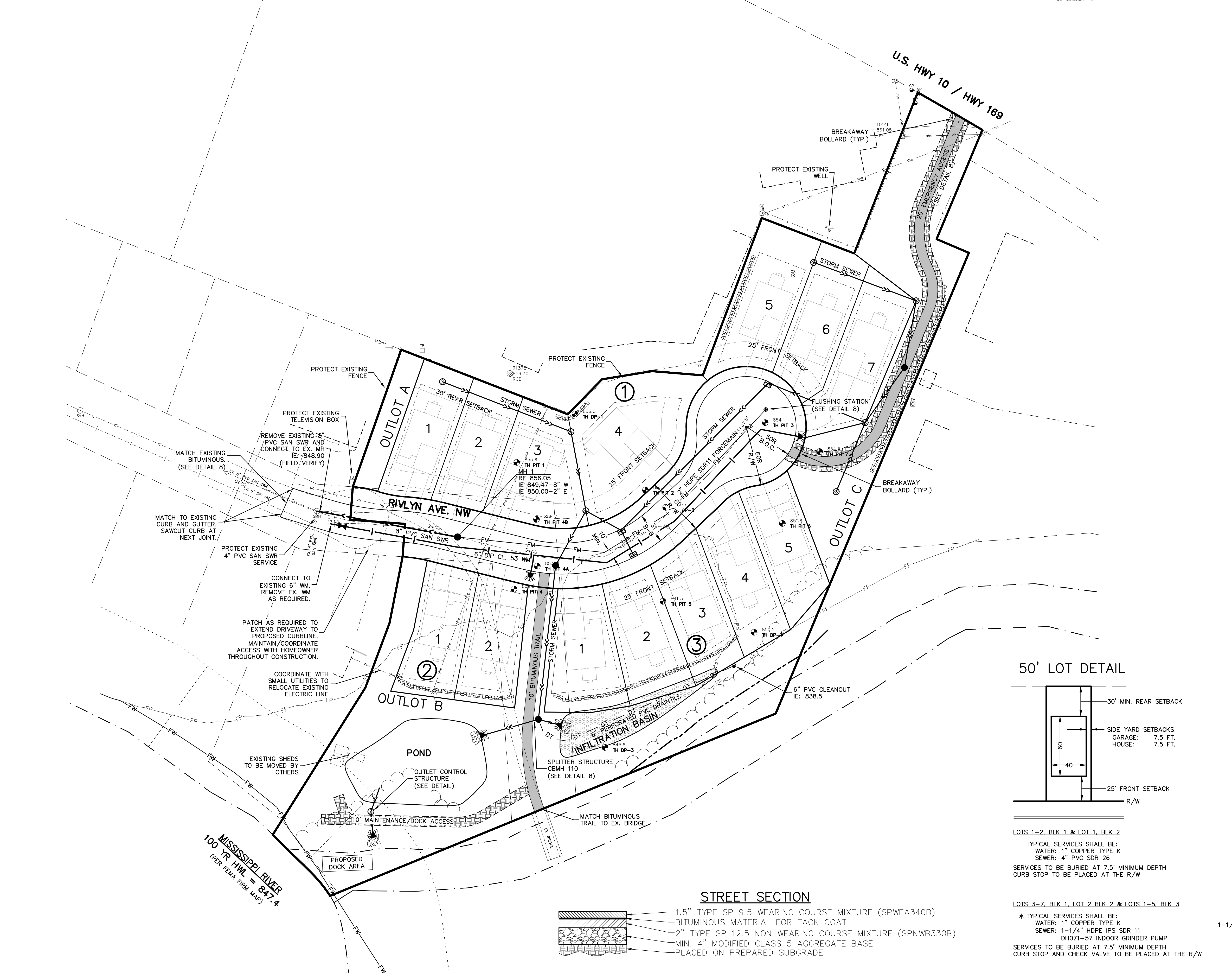


LOTS 1-2, BLK 1 & LOT 1, BLK 2
 TYPICAL SERVICES SHALL BE:
 WATER: 1" COPPER TYPE K
 SEWER: 4" PVC SDR 26
 SERVICES TO BE BURIED AT 7.5' MINIMUM DEPTH
 CURB STOP TO BE PLACED AT THE R/W

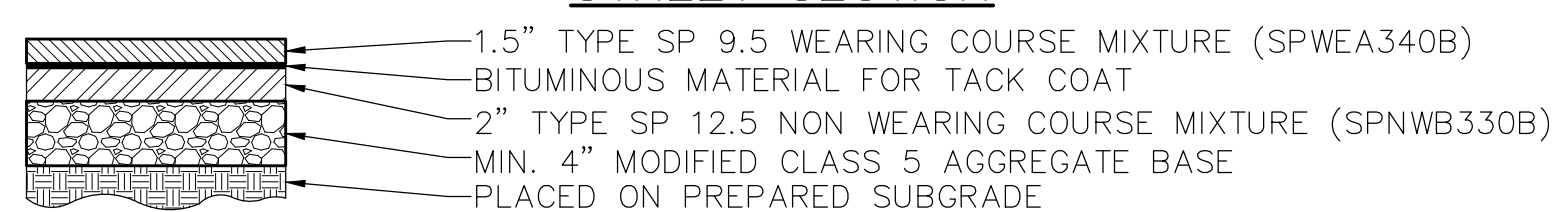
LOTS 3-7, BLK 1, LOT 2 BLK 2 & LOTS 1-5, BLK 3
 * TYPICAL SERVICES SHALL BE:
 WATER: 1" COPPER TYPE K
 SEWER: 1-1/4" HDPE IPS SDR 11
 DHO71-57 INDOOR GRINDER PUMP
 SERVICES TO BE BURIED AT 7.5' MINIMUM DEPTH
 CURB STOP AND CHECK VALVE TO BE PLACED AT THE R/W



BENCHMARK	
1. MNDOT GSD Station #833, Named "Lumber MNDT RM 1"	Elev. = 859.11
2. MNDOT GSD Station #775, Named "E 257"	Elev. = 863.67



STREET SECTION



Carlson McCain
 environmental engineering surveying
 3890 Pheasant Ridge Drive NE, Suite 100
 Blaine, MN 55449
 Phone: (763) 489-7900
 Fax: (763) 489-7959
 www.carlsonmccain.com

I hereby certify that this plan, specification or report was prepared by me or under my direct supervision and that I am a duly Licensed Professional Engineer under the laws of the State of Minnesota

Print Name: Brian J. Krystofiak, P.E.
 Signature: *Brian J. Krystofiak*
 Date: 1/25/19 License #: 25063

Drawn: ADB
 Designed: BJK
 Date: 1/25/19

VILLAGE BANK
 9298 Central Avenue NE
 Blaine, MN 55434

RIVER WALK VILLAGE
 Ramsey, Minnesota

PRELIMINARY SITE & UTILITY PLAN

Save Date: 04/04/19 | F:\08617801 - 782017802 - Highway 10 ramsey\cad_c3d\engineering\preliminary\7802_site.dwg