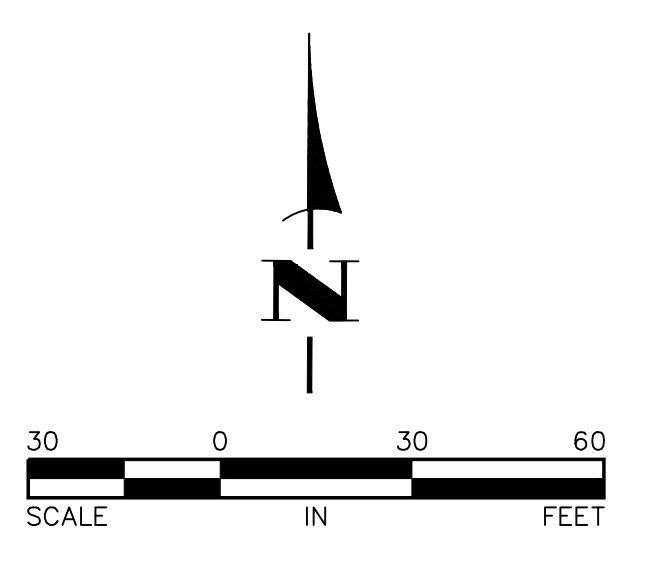
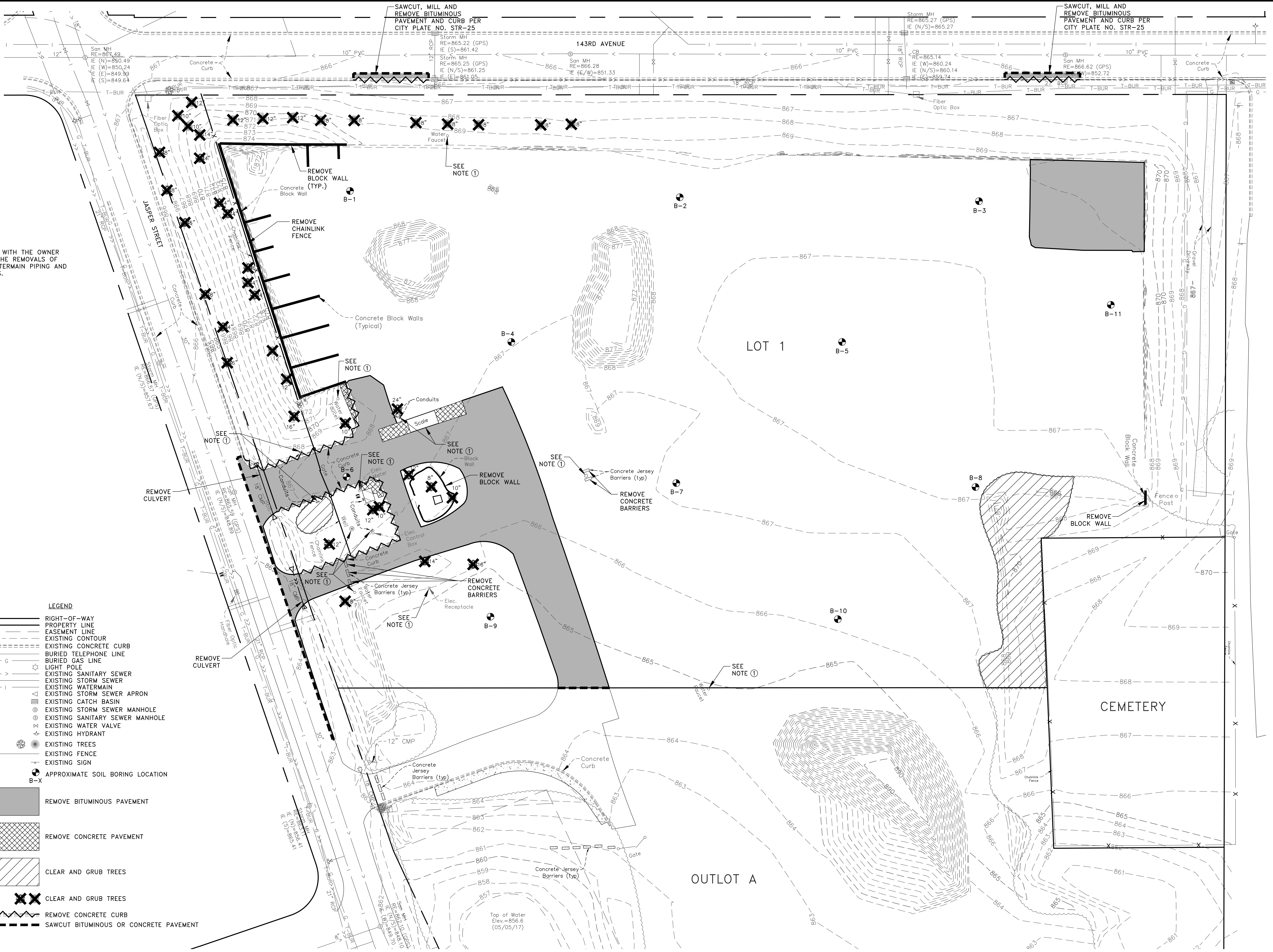


SAWCUT, MILL AND REMOVE BITUMINOUS PAVEMENT AND CURB PER CITY PLATE NO. STR-25



REFERENCE NOTES:
 ① CONTRACTOR SHALL COORDINATE WITH THE OWNER TO DETERMINE THE EXTENT OF THE REMOVALS OF THE ONSITE UTILITIES, WELL, WATERMAIN PIPING AND OTHER MISCELLANEOUS FEATURES.

- LEGEND**
- RIGHT-OF-WAY
 - PROPERTY LINE
 - EASEMENT LINE
 - - - - - EXISTING CONTOUR
 - - - - - EXISTING CONCRETE CURB
 - - - - - BURIED TELEPHONE LINE
 - - - - - BURIED GAS LINE
 - ☆ LIGHT POLE
 - EXISTING SANITARY SEWER
 - EXISTING STORM SEWER
 - EXISTING WATERMAIN
 - EXISTING STORM SEWER APRON
 - EXISTING CATCH BASIN
 - EXISTING STORM SEWER MANHOLE
 - EXISTING SANITARY SEWER MANHOLE
 - EXISTING WATER VALVE
 - EXISTING HYDRANT
 - EXISTING TREES
 - EXISTING FENCE
 - EXISTING SIGN
 - APPROXIMATE SOIL BORING LOCATION
 - B-X
 - REMOVE BITUMINOUS PAVEMENT
 - REMOVE CONCRETE PAVEMENT
 - CLEAR AND GRUB TREES
 - CLEAR AND GRUB TREES
 - REMOVE CONCRETE CURB
 - SAWCUT BITUMINOUS OR CONCRETE PAVEMENT



4/11/19 10:58 AM C:\Users\TAE\OneDrive\Documents\339510_Existing.dwg

DATE	REVISION	DATE	REVISION
5/1/19	CITY SUBMITTAL		

I hereby certify that this plan, specification, or report was prepared by me or under my direct supervision and that I am a duly Licensed Professional Engineer under the laws of the State of Minnesota.

Timothy A. Ebersichs, P.E.
 TIMOTHY A. EBERSICHS, P.E.
 Date 4/19/19 Lic. No. 43362

DESIGNED BY: TAE
 DRAWN BY: TAE
 CHECKED BY: CJJ

Hakanson Anderson
 Civil Engineers and Land Surveyors
 3601 Thurston Ave., Anoka, Minnesota 55303
 763-427-5860 FAX 763-427-0520
 www.hakanson-anderson.com

LOT 1, BLOCK 1
 ANDERSON DAHLEN SOUTH ADDITION

EXISTING TOPOGRAPHY
 AND REMOVALS PLAN
 CITY OF RAMSEY, MINNESOTA

SHEET
C4
 OF
C8
 SHEETS