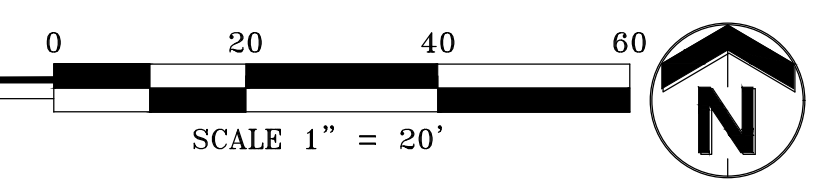


3ASIN 10
55.0
856.5
= 858.0
3 PLAN)

PROPOSED BUILDING
FFE = 865.0

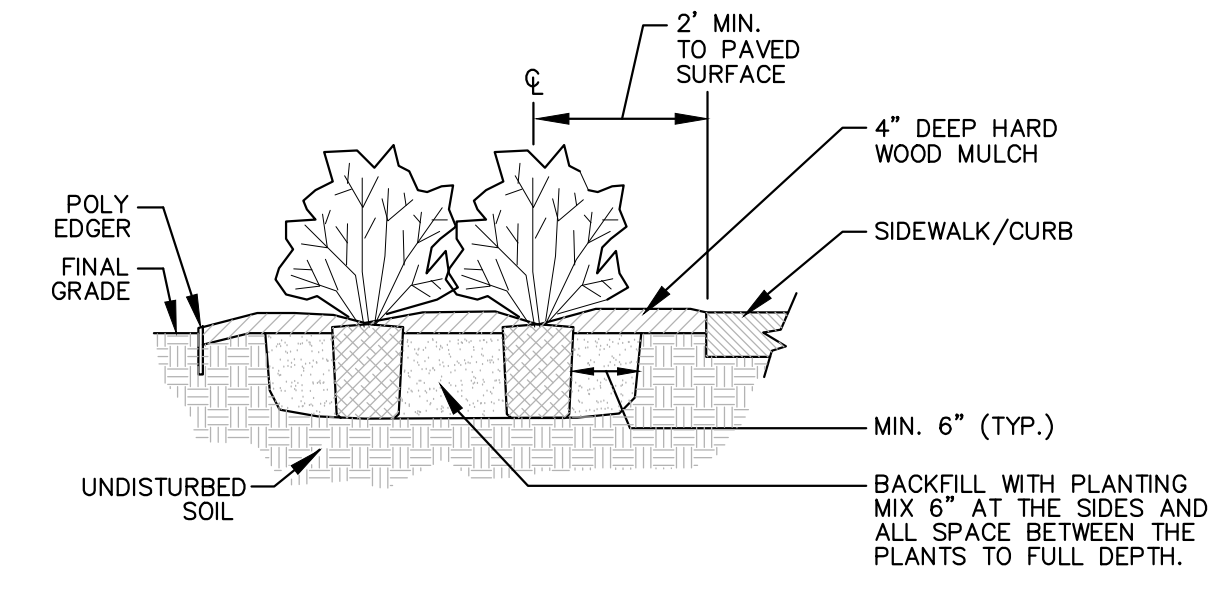
EXISTING BUILDING

1 SITE LANDSCAPE PLAN
L1

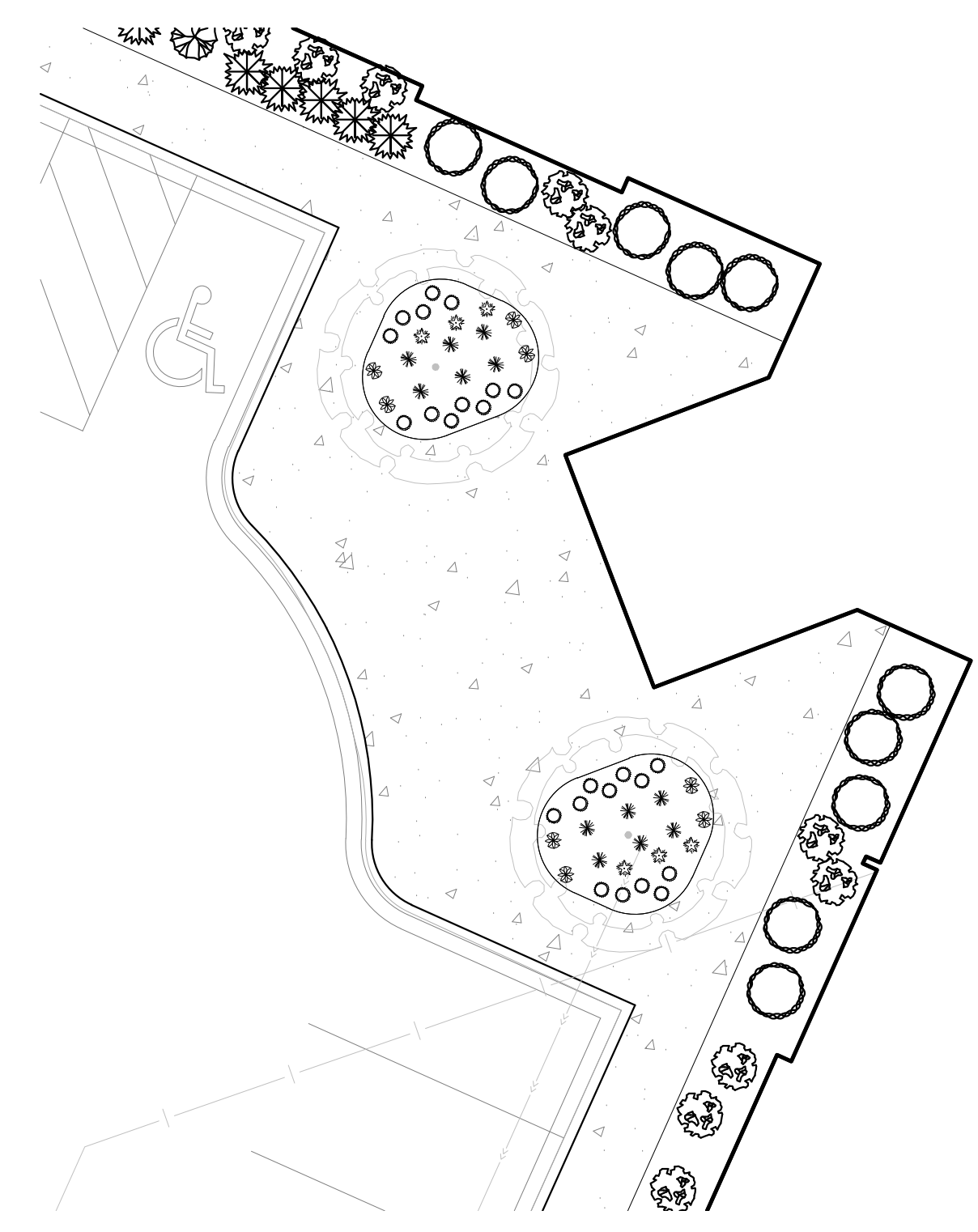


LANDSCAPE LEGEND										
KEY	BOTANICAL NAME	COMMON NAME	SIZE	ROOT	QTY.	REMARKS	INSTALL HEIGHT	MATURE HEIGHT	POINTS	
SHRUBS										
SVJ	Juniperus Horizontalis 'Savin'	SAVIN JUNIPER	#5	CONT.	15		1'	3'x4'	6	
TAU	Taxus x media 'Tauntoni'	TAUNTON SPREADING YEW	#5	CONT.	7		1'	3'x4'	10	
DBB	Euonymus alatus 'Compactus'	DWARF BURNING BUSH	#5	CONT.	15		1.5'	4'x4'	8	
GLS	Rhus aromatica 'Gro-Low'	GRO-LOW FRAGRANT SUMAC	#5	CONT.	12		1'	2.5'x5'	15	
BCA	Viburnum trilobum 'Bailey Compact'	COMPACT AMERICAN CRANBERRYBUSH	#5	CONT.	14		1.5'	4'x4'	10	
AWS	Spiraea x bumalda 'Anthony Waterer'	ANTHONY WATERER SPIREA	#5	CONT.	21		1.5'	3'x4'	8	
SMS	Spiraea nipponica 'Snowmound'	SNOWMOUND SPIREA	#5	CONT.	9		1.5'	3'x4'	6	
MYS	Spiraea thunbergii 'Ogon'	MELLOW YELLOW SPIREA	#5	CONT.	14		1'	3'x4'	8	
ALP	Ribes alpinum	ALPINE CURRANT	#5	CONT.	15		1.5'	3'x4'	8	
GFS	Spiraea x bumalda 'Gold Flame'	GOLD FLAME SPIREA	#5	CONT.	11		1.5'	3'x4'	8	
MGH	Dierilla lonicera	DWARF BUSH HONEYSUCKLE	#5	CONT.	-		1.5'	4'x4'	6	
DBW	Salix purpurea 'Nana'	DWARF BLUE ARCTIC WILLOW	#5	CONT.	-		1'	3'x4'	8	
PERENNIALS										
KFG	Calamagrostis acutiflora 'Karl Foerster'	KARL FOERSTER FEATHER REED GRASS	#1	CONT.	12	PLANT 2' O.C.	6"	4'x2'		1,262
PDS	Sporobolus heterolepis	PRAIRIE DROPSEED	#1	CONT.	8	PLANT 2' O.C.	6"	2'x2'		
BDL	Hemerocallis 'Baja'	BAJA DAYLILY	#1	CONT.	6	RED FLOWER	6"	2'x1.5'		
WLC	Nepeta x faassenii 'Walker's Low'	WALKER'S LOW CATMINT	#1	CONT.	24	PURPLE FLOWER	6"	1'x1'		
KBL	Liatris spicata 'Kobold'	KOBOLD LIATRIS	#1	CONT.	-	PURPLE FLOWER	6"	1.5'x1.5'		

QUANTITIES SHOWN IN THE PLANTING SCHEDULE ARE FOR THE CONTRACTOR'S CONVENIENCE. CONTRACTOR TO VERIFY QUANTITIES SHOWN ON THE PLAN.



A SHRUB & CONTAINER PLANTING DETAIL
NOT TO SCALE



2 FRONT PLANTERS
L2
SCALE 1" = 10"

**Carlson
McCain**
ENVIRONMENTAL - ENGINEERING - SURVEYING
3890 Pheasant Ridge Dr. NE #100, Blaine, MN
Phone: 763-489-7900 Fax: 763-489-7959

SHRUB PLAN
**SUITE LIVING SENIOR CARE
OF RAMSEY**
Ramsey, Minnesota

HAMPTON COMPANIES
3570 Lexington Avenue N, Suite 321
Shoreview, MN 55126

REVISIONS	
1.	
DRAWN BY:	JAK
DESIGNED BY:	JAK
ISSUE DATE:	06/06/19

I hereby certify that this plan, specification or report was prepared by me or under my direct supervision and that I am a duly licensed Landscape Architect under the laws of the State of Minnesota.

Name: James A. Kalkes, RLA
Signature: *James A. Kalkes*
Date: 06/06/19 License #: 45071

L2 of 2

Site.DWG: 06/06/19 / J:\data\344 - 8160\08155 - Ramsey - suite living\load_C30\landscape\8155_Landscape.dwg