

CDFA Brownfields Technical Assistance Program & City of Ramsey Anoka-Ramsey Closed Landfill

DAY 1 AGENDA

July 17, 2019. 8:15am – 4:30pm.

Ramsey Municipal Plaza, Lake Itasca Room (7550 Sunwood Dr NW, Ramsey, MN 55303)

8:15am. Registration. Ramsey Municipal Plaza. Register, coffee and light snacks, find seating.

8:30am. Workshop Kickoff. Ramsey Municipal Plaza. Introductions, meet the team, review agenda, and frame the purpose of the site visit and stake-holder meetings later in the day. **Lead:** Cameran Bailey and City of Ramsey staff

9:30am. Site Visit. Anoka-Ramsey Closed Landfill (14787 Sunfish Lake Blvd NW, Ramsey, MN 55303). Travel to site, get overview of site characteristics, history, current status, and any future plans for closed landfill from MPCA. Walking Q&A of site. **Lead:** Mark Umholtz, MN Pollution Control Agency, Closed Landfill Program

11:30am. Lunch. Patronize an establishment nearby to Ramsey Administrative Office.

Return to Ramsey Municipal Plaza by 12:25pm

12:30pm. Stakeholder Focus 1: Localized Natural Environment Goal. Integrate and develop the most innovative and necessary environmental benefits and BMP's at site. **Facilitator:** Dan Marckel, Katelyn Champoux, Cameran Bailey

- Key Stakeholders: MN Department of Natural Resources, MN Board of Water & Soil Resources, MN Pollution Control Agency, University of MN, MN Brownfields, City of Ramsey Officials

1:45pm. Stakeholder Focus 2: LMI-Household/Societal Goal. Develop the project to utilize a portion of the financial revenues of the project to directly assist energy-burdened homes in the City of Ramsey. **Facilitator:** Dan Marckel, Katelyn Champoux, Cameran Bailey

- Key Stakeholders: Connexus Energy, Anoka County Community Action Program, Anoka County Housing & Redevelopment Authority, City of Ramsey Officials, City of Ramsey - Anoka Area Chamber of Commerce, Rural Renewable Energy Alliance, Neighborhood Associations, MN Department of Commerce

3:00pm. Stakeholder Focus 3: Development Goal. Identify most feasible development scenarios for this site to be developed in a manner that incorporates identified social and environmental benefits, and informs replicability, for the other 110+ sites in the state. **Facilitator:** Dan Marckel, Katelyn Champoux, Cameran Bailey

- Key Stakeholders: Rural Renewable Energy Alliance, MN Brightfields Initiative, MN Pollution Control Agency, MN Brownfields, City of Ramsey Officials

4:15pm. Closing Remarks. Discuss how workshop from today will inform plans for Day 2. Pose any lingering questions/concerns you want addressed Day 2 if you won't be here.

- **Leading:** CDFA and Cameran Bailey

4:30pm. Day Concludes.

CDFA Brownfields Technical Assistance Program & City of Ramsey Anoka-Ramsey Closed Landfill

DAY 2 AGENDA

July 18, 2019. 9:15am – 11:30am.

Ramsey Municipal Plaza, Lake Itasca Room (7550 Sunwood Dr NW, Ramsey, MN 55303)

-
- 8:15am. Pre-Workshop: CDFA Advisors Download** independent of stakeholders.
-
- 9:15am. Registration. Ramsey Municipal Plaza.** Register, coffee and light snacks, find seating.
-
- 9:30am. Team-Work Group Time. Ramsey Municipal Plaza.** Intentional workshopping and creative thinking to address issues, priorities, opportunities, and barriers raised in Day 1 focus groups. **Lead:** CDFA and Advisors.
- Key Stakeholders: Rural Renewable Energy Alliance, MN Brightfields, MN Pollution Control Agency, City of Ramsey Officials, Connexus Energy, MNSEIA, State Agencies
-
- 10:30am. Key Stakeholders Debrief. Ramsey Municipal Plaza.** Final questions CDFA’s advisors may have and for CDFA to give group a rough outline of their report and what it will look like based on the discussion from the past couple of days. **Lead:** CDFA and Advisors.
-
- 11:30am. Closing Remarks, CDFA Site Visit Concludes. Lead:** Cameran
-

Confirmed Representatives from CDFA & Advisors:

Cayla Matsumoto

Brownfields Program Manager
Council of Development Finance Agencies

James Metz

Brownfields Program Coordinator
Council of Development Finance Agencies

Charlie Howland

Partner, Environmental Practice Head
Curtis, Mallet-Prevost, Colt & Mosle LLP

Bob Long & Peder Larson

Larkin Hoffman

List of Attending Organizations

- **MN Dept. of Natural Resources**
- **MN Pollution Control Agency**
- **MN Department of Commerce**
- **University of Minnesota**
- **City of Ramsey**
- **Connexus Energy**
- **Anoka County Community Action Program**
- **City of Ramsey Committees and Associations**
- **MN Brightfields Initiative (CERTs, Met Council)**
- **MN SEIA & Select Members (RREAL, Hunt Electric, AMERESCO)**

Project Outcomes

1. The City of Ramsey's "Anoka-Ramsey Closed Landfill" to become the first true "Brightfield" developed in the state of Minnesota, and to be developed in a manner that centers the benefits of the project on Ramsey's LMI-Households and the city's natural environment as a replicable model for how the other 110+ closed landfills in the state may be redeveloped in a socially and environmentally just manner.
2. Additionally, this site will serve as a "living lab" for different ways in which environmentally and socially responsible and just practices may be incorporated across the site.

Project Goals

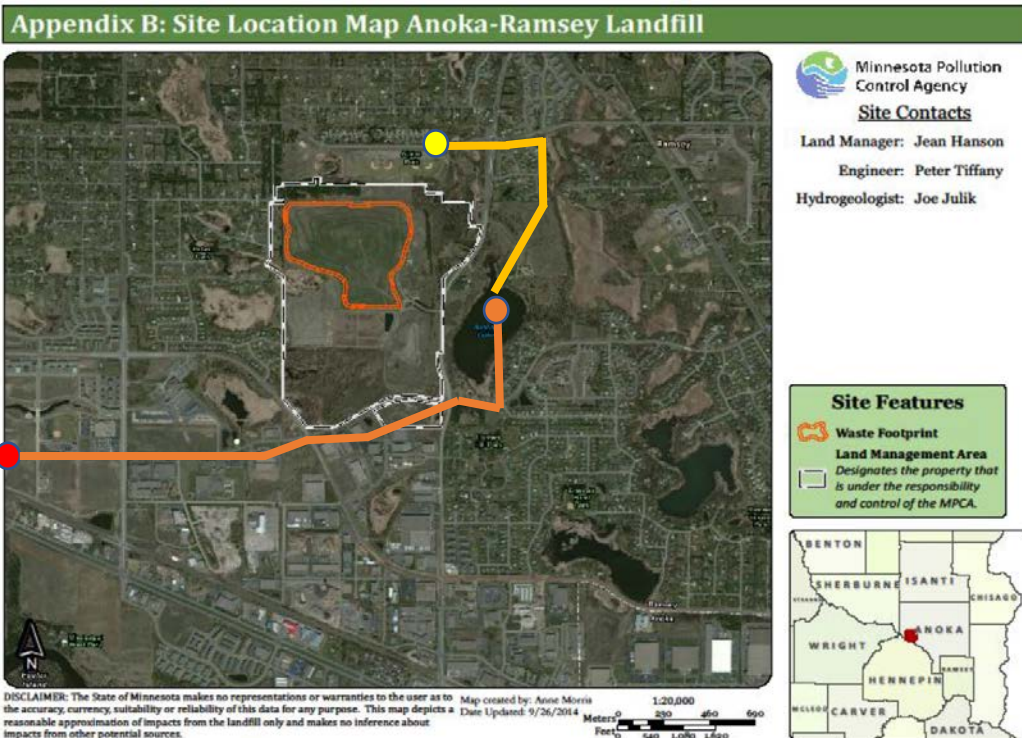
1. **Localized Natural Environment Goal:** Integrate and develop the most innovative and necessary environmental benefits and BMP's at site.
2. **LMI-Household/Societal Goal:** Develop the project to utilize a portion of the financial revenues of the project to directly assist energy-burdened homes in the Ramsey and Anoka County.
3. **Development Goal:** Identify most feasible development scenarios for this site to be developed in a manner that incorporates identified social and environmental benefits, and informs replicability, for the other 110+ sites in the state.

Project Site Description: 267.4-acre "Anoka-Ramsey" closed landfill site located in the southeastern quadrant of the City of Ramsey. The site is located 1-mile due north of the Mississippi River. The site is directly adjacent to active light commercial, light industrial, and "multi-optional development" land uses to the south of the site, light single-family residential to the west of the site, Alpine Park to the north of the site, and undeveloped shrubbery, forest, and City-Owned Sunfish Lake (30-acre) & Park to the east of the site. The site was officially closed as a landfill in 1993. The "cap" of the landfill is approximately 64-acres in size, with approx. 3,419,316 tons of waste within the cap.

● **Ramsey Municipal Plaza (Lake Itasca Room):** 7550 Sunwood Dr NW, Ramsey, MN 55303

● **Closed Landfill Entrance:** 14787 Sunfish Lake Blvd NW, Ramsey, MN 55303

● **Alpine Park Entrance:** 6600 Alpine Dr, Ramsey, MN 55303



Name:

Organization:

Role:

Major Questions/Concerns you want to address today:

Questions and ideas to think about during site visit.

What areas of need and/or concern do you see on site relative to your profession?

What opportunities related to your profession do you see on site?

If this site could be ANYTHING to support the mission of your organization/stakeholders, what would it be?