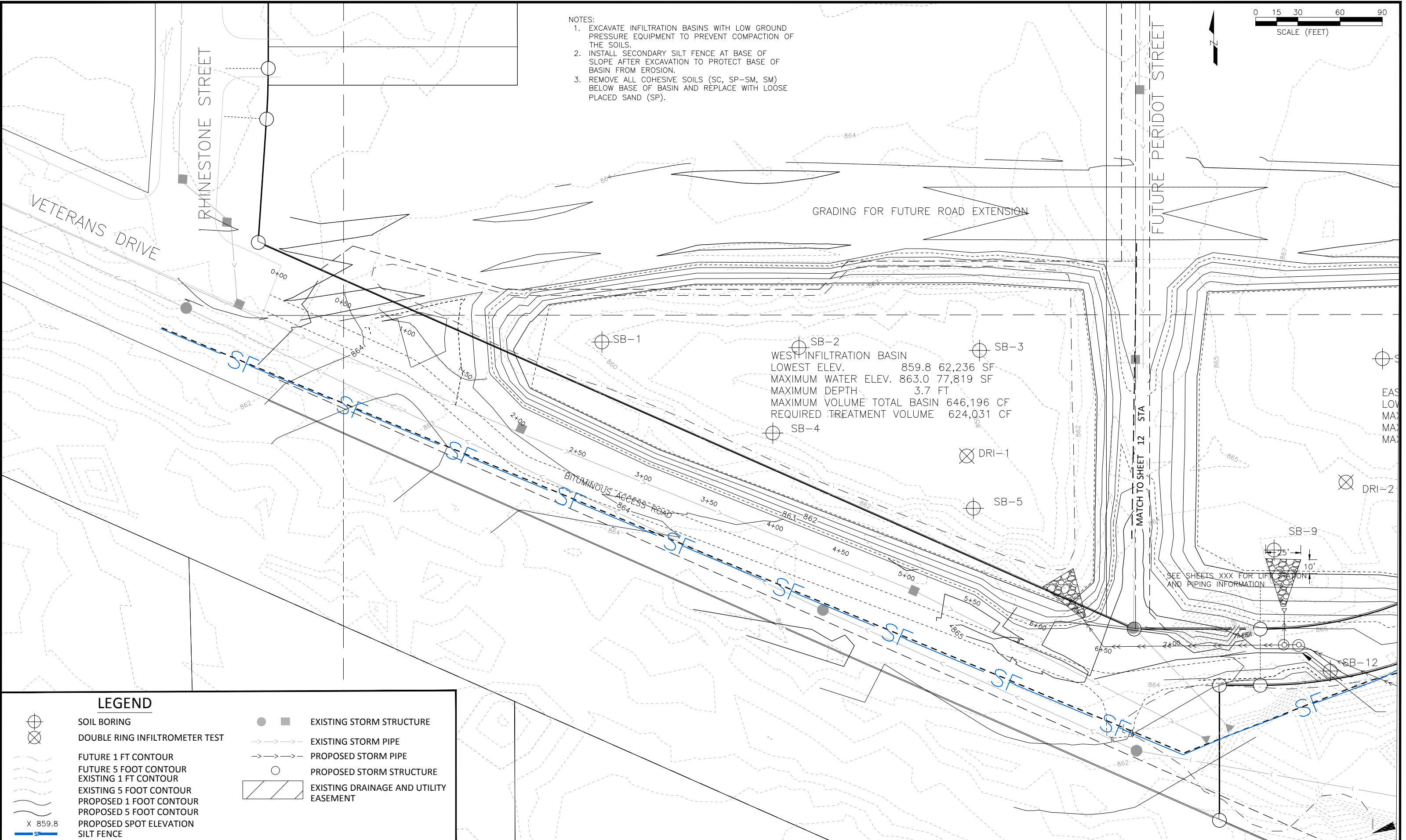


- NOTES:
- EXCAVATE INFILTRATION BASINS WITH LOW GROUND PRESSURE EQUIPMENT TO PREVENT COMPACTION OF THE SOILS.
 - INSTALL SECONDARY SILT FENCE AT BASE OF SLOPE AFTER EXCAVATION TO PROTECT BASE OF BASIN FROM EROSION.
 - REMOVE ALL COHESIVE SOILS (SC, SP-SM, SM) BELOW BASE OF BASIN AND REPLACE WITH LOOSE PLACED SAND (SP).



WEST INFILTRATION BASIN
 LOWEST ELEV. 859.8 62,236 SF
 MAXIMUM WATER ELEV. 863.0 77,819 SF
 MAXIMUM DEPTH 3.7 FT
 MAXIMUM VOLUME TOTAL BASIN 646,196 CF
 REQUIRED TREATMENT VOLUME 624,031 CF

LEGEND

- | | | | |
|--|-------------------------------|--|--|
| | SOIL BORING | | EXISTING STORM STRUCTURE |
| | DOUBLE RING INFILTRMETER TEST | | EXISTING STORM PIPE |
| | FUTURE 1 FT CONTOUR | | PROPOSED STORM PIPE |
| | FUTURE 5 FOOT CONTOUR | | PROPOSED STORM STRUCTURE |
| | EXISTING 1 FT CONTOUR | | EXISTING DRAINAGE AND UTILITY EASEMENT |
| | EXISTING 5 FOOT CONTOUR | | |
| | PROPOSED 1 FOOT CONTOUR | | |
| | PROPOSED 5 FOOT CONTOUR | | |
| | PROPOSED SPOT ELEVATION | | |
| | SILT FENCE | | |

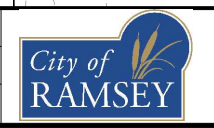
DATE	REVISION

I hereby certify that this plan, specification, or report was prepared by me or under my direct supervision and that I am a duly Licensed Professional Engineer under the laws of the State of Minnesota

LEONARD LINTON
 Date 1/03/19 Lic. No. 21112

DESIGNED BY:
 LLL
 DRAWN BY:
 LLL
 CHECKED BY:
 LLL

DATE:
 1/03/19
 FILE No.
 18-09



CITY OF RAMSEY
 7550 SUNWOOD DRIVE
 RAMSEY, MN 55303
 (763) 427-1410 FAX (763) 433-9898

GRADING PLAN WEST

COR INFILTRATION BASIN IMPROVEMENTS
 CITY PROJECT NO. 18-09
 CITY OF RAMSEY, MINNESOTA