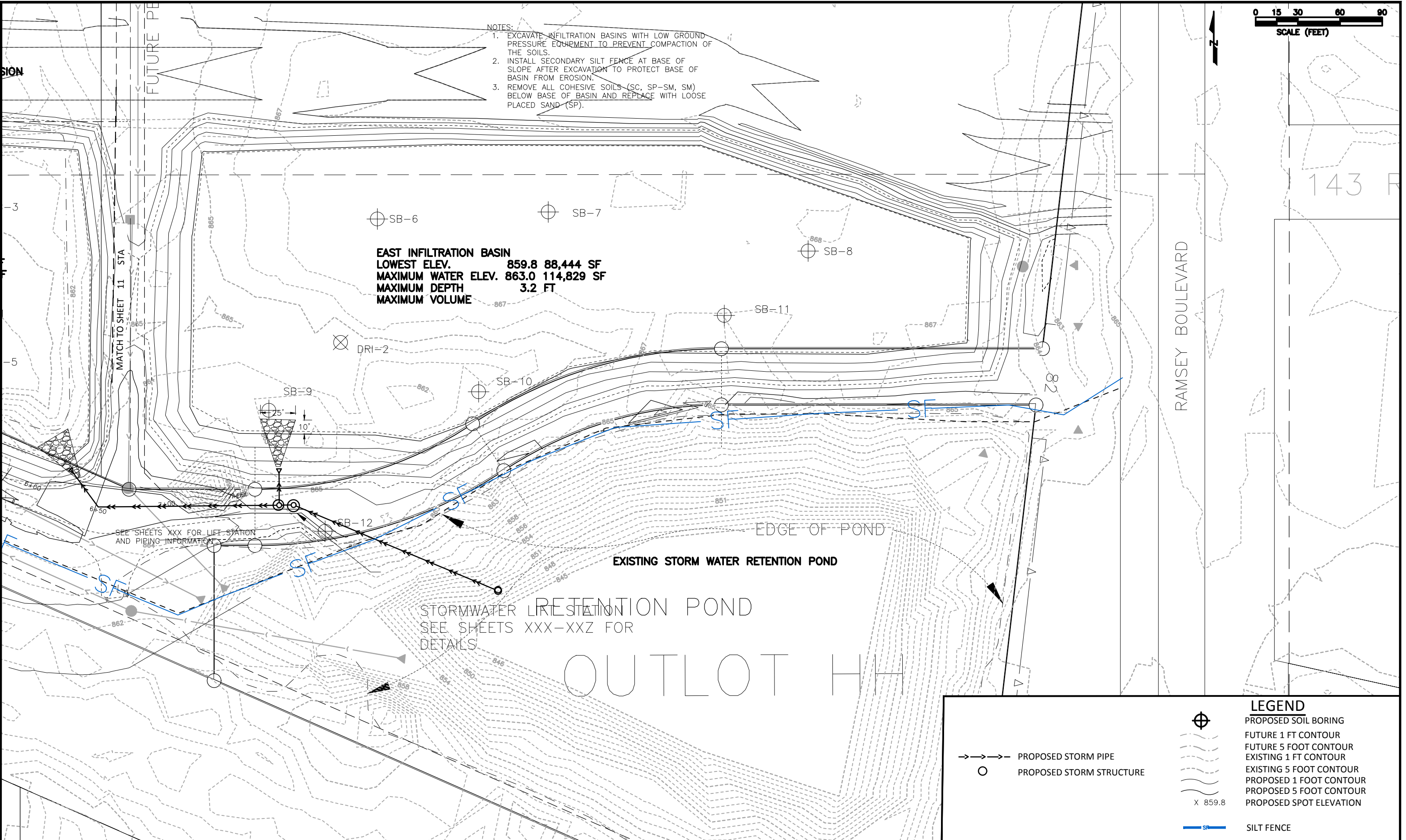




- NOTES:
1. EXCAVATE INFILTRATION BASINS WITH LOW GROUND PRESSURE EQUIPMENT TO PREVENT COMPACTION OF THE SOILS.
 2. INSTALL SECONDARY SILT FENCE AT BASE OF SLOPE AFTER EXCAVATION TO PROTECT BASE OF BASIN FROM EROSION.
 3. REMOVE ALL COHESIVE SOILS (SC, SP-SM, SM) BELOW BASE OF BASIN AND REPLACE WITH LOOSE PLACED SAND (SP).

EAST INFILTRATION BASIN
 LOWEST ELEV. 859.8 88,444 SF
 MAXIMUM WATER ELEV. 863.0 114,829 SF
 MAXIMUM DEPTH 3.2 FT
 MAXIMUM VOLUME



LEGEND

- ⊕ PROPOSED SOIL BORING
- FUTURE 1 FT CONTOUR
- FUTURE 5 FOOT CONTOUR
- EXISTING 1 FT CONTOUR
- EXISTING 5 FOOT CONTOUR
- PROPOSED 1 FOOT CONTOUR
- PROPOSED 5 FOOT CONTOUR
- X 859.8 PROPOSED SPOT ELEVATION
- SF SILT FENCE
- PROPOSED STORM PIPE
- PROPOSED STORM STRUCTURE

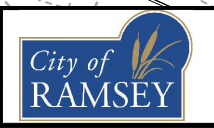
DATE	REVISION
Dec 19, 2018 - 12:13pm	
G:\Engineering\AutoCad Dwg\Projects A-M\COR Infiltration Basin Design\Final Design\18-09 Grading Plan.dwg	

I hereby certify that this plan, specification, or report was prepared by me or under my direct supervision and that I am a duly Licensed Professional Engineer under the laws of the State of Minnesota

LEONARD LINTON
 Date 1/03/19 Lic. No. 21112

DESIGNED BY: LLL
 DRAWN BY: LLL
 CHECKED BY: BRW

DATE: 1/03/19
 FILE No: 18-09



CITY OF RAMSEY
 7550 SUNWOOD DRIVE
 RAMSEY, MN 55303
 (763) 427-1410 FAX (763) 433-9898

GRADING PLAN EAST

COR INFILTRATION BASIN IMPROVEMENTS
 CITY PROJECT NO. 18-09
 CITY OF RAMSEY, MINNESOTA