

# CITY OF RAMSEY

## HEDGEHOG STREET DRAINAGE IMPROVEMENTS

### CITY IMPROVEMENT PROJECT NO. 19-10

### GOVERNING SPECIFICATIONS

THE 2018 EDITION OF THE MINNESOTA DEPARTMENT OF TRANSPORTATION "STANDARD SPECIFICATIONS FOR CONSTRUCTION" SHALL GOVERN.

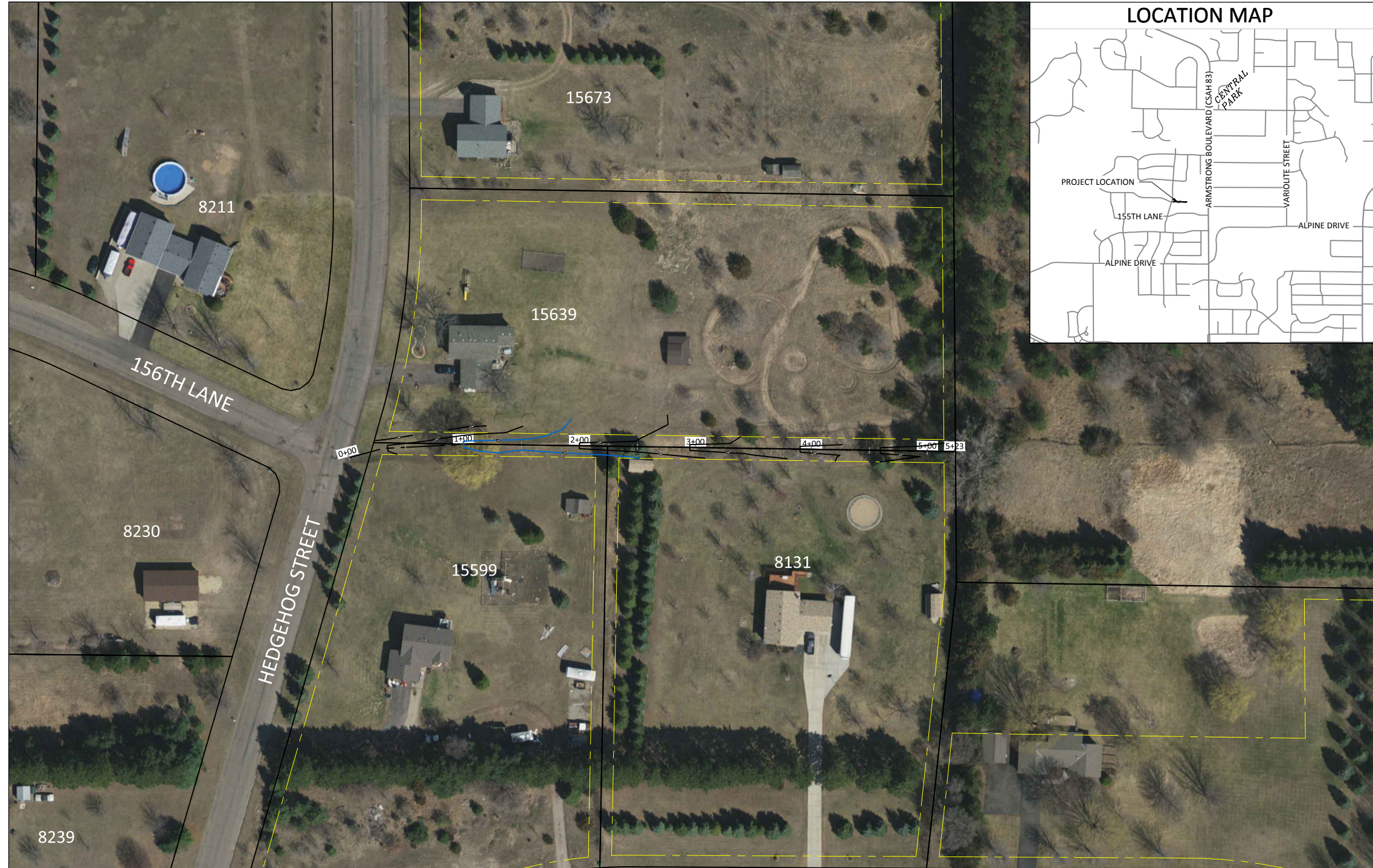
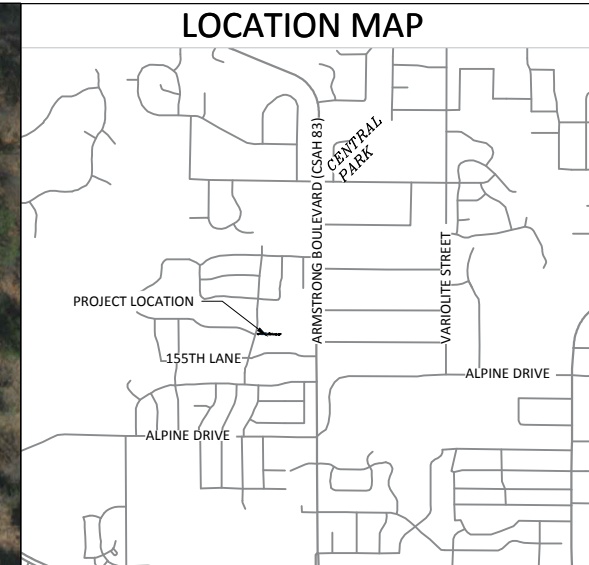
ALL FEDERAL, STATE AND LOCAL LAWS, REGULATIONS AND ORDINANCES SHALL BE COMPLIED WITH IN THE CONSTRUCTION OF THIS PROJECT.

ALL TRAFFIC CONTROL DEVICES AND SIGNING SHALL CONFORM TO THE MINNESOTA MANUAL ON UNIFORM TRAFFIC CONTROL DEVICES, INCLUDING THE FIELD MANUAL FOR TEMPORARY TRAFFIC CONTROL ZONE LAYOUTS.

#### SHEET INDEX

THIS PLAN CONTAINS --- SHEETS

SHEET No.	DESCRIPTION
1	TITLE SHEET



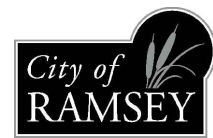
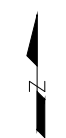
#### LEGEND

- |   |   |   |
|---|---|---|
| <ul style="list-style-type: none"> <li> LIGHT POLE</li> <li> TREE</li> <li> SHRUB</li> <li> SIGN</li> <li> VALVE</li> <li> UTILITY PEDESTAL</li> <li> HAND HOLE</li> <li> REMOVE TREE</li> <li> 3'X2' CATCH BASIN</li> <li> MANHOLE</li> <li> INLET PROTECTION</li> <li> HYDRANT</li> <li> VALVE</li> </ul> | <ul style="list-style-type: none"> <li> EASEMENT</li> <li> RIGHT OF WAY</li> <li> ELECTRIC</li> <li> OVERHEAD ELECTRIC</li> <li> GAS</li> <li> TELECOMMUNICATIONS</li> <li> STORM SEWER</li> <li> SANITARY SEWER</li> <li> WATERMAIN</li> <li> SAWCUT PAVEMENT</li> <li> TREE LINE</li> <li> FENCE</li> <li> LANDSCAPING</li> <li> RETAINING WALL</li> <li> 5' CONTOUR LINE</li> <li> 1' CONTOUR LINE</li> <li> SILT FENCE</li> <li> SURM. CONCRETE CURB &amp; GUTTER</li> <li> B618 CONCRETE CURB &amp; GUTTER</li> <li> REMOVE BITUMINOUS PAVEMENT</li> <li> SODDING TYPE LAWN</li> <li> CONCRETE PAVEMENT</li> <li> BITUMINOUS PAVEMENT</li> <li> GRAVEL SURFACE</li> <li> ROCK CONSTRUCTION EXIT</li> </ul> | <ul style="list-style-type: none"> <li> EASEMENT</li> <li> RIGHT OF WAY</li> <li> ELECTRIC</li> <li> OVERHEAD ELECTRIC</li> <li> GAS</li> <li> TELECOMMUNICATIONS</li> <li> STORM SEWER</li> <li> SANITARY SEWER</li> <li> WATERMAIN</li> <li> SAWCUT PAVEMENT</li> <li> TREE LINE</li> <li> FENCE</li> <li> LANDSCAPING</li> <li> RETAINING WALL</li> <li> 5' CONTOUR LINE</li> <li> 1' CONTOUR LINE</li> <li> SILT FENCE</li> <li> SURM. CONCRETE CURB &amp; GUTTER</li> <li> B618 CONCRETE CURB &amp; GUTTER</li> <li> REMOVE BITUMINOUS PAVEMENT</li> <li> SODDING TYPE LAWN</li> <li> CONCRETE PAVEMENT</li> <li> BITUMINOUS PAVEMENT</li> <li> GRAVEL SURFACE</li> <li> ROCK CONSTRUCTION EXIT</li> </ul> |
|---|---|---|

I hereby certify that this plan, specification, or report was prepared by me or under my direct supervision and that I am a duly Licensed Professional Engineer under the laws of the State of Minnesota.

BRUCE WESTBY, P.E.      57095      DATE ---  
 RAMSEY CITY ENGINEER      LIC. NO.

DATE	REVISION



CITY OF RAMSEY  
 7550 SUNWOOD DRIVE  
 RAMSEY, MN 55303  
 (763) 427-1410 FAX (763) 433-9898

THE SUBSURFACE UTILITY INFORMATION IN THIS PLAN IS UTILITY QUALITY LEVEL D. THIS QUALITY LEVEL WAS DETERMINED ACCORDING TO THE GUIDELINES OF CI/ASCE 38-02, ENTITLED "STANDARD GUIDELINES FOR THE COLLECTION AND DEPICTION OF EXISTING SUBSURFACE UTILITY DATA."

NOTE: EXISTING UTILITY INFORMATION SHOWN ON THIS PLAN HAS BEEN PROVIDED BY THE UTILITY OWNER. THE CONTRACTOR SHALL FIELD VERIFY EXACT LOCATIONS PRIOR TO COMMENCING CONSTRUCTION AS REQUIRED BY STATE LAW. NOTIFY GOPHER STATE ONE CALL 1-800-252-1166 OR 651-454-0002



Call before you dig  
 811  
 651 454-0002 Metro  
 800 252-1166 Outstate  
[www.gopherstateonecall.org](http://www.gopherstateonecall.org)

Sep 12, 2019 12:12pm  
 C:\Engineering\AutoCad Dwg\Projects A-M\2019 Drainage Improvements (19-09, 19-10, 19-11)\Plan Drawings\19-10 Cover & Notes.dwg