

# RAMSEY STORAGE CENTER

City of Ramsey  
County of Anoka  
Sec. 27, T. 32, R. 25

**KNOW ALL PERSONS BY THESE PRESENTS:** That Ramsey Storage Partners LLC., a Minnesota Limited Liability company, owner of the following described property:

That part of the Northwest Quarter of the Northwest Quarter of Section 27, Township 32 Range 25, Anoka County, Minnesota, described as follows:

Commencing at a point on the west line of said Section which point is 209 feet north of the southwest corner of said Northwest Quarter of Northwest Quarter, as measured along said west line; thence proceeding east and parallel with the south line of said Section for a distance of 209 feet; thence proceeding north and parallel with the west line of said Section for a distance of 209 feet; thence proceeding west and parallel with the first course to the west line of said Section; thence proceeding south along the west line of said Section to point of commencement;

Except ANOKA COUNTY HIGHWAY RIGHT-OF-WAY PLAT NO. 16. And,

That part of the Northwest Quarter of the Northwest Quarter of Section 27, Township 32, Range 25, Anoka County, Minnesota, described as follows:

Commencing at a point on the west line of said Section which point is 209 feet north of the southwest corner of said Northwest Quarter of Northwest Quarter as measured along said west line; thence proceeding east and parallel with the south line of said Section for a distance of 209 feet; thence proceeding south and parallel with the west line of said Section for a distance of 209 feet; thence proceeding west and parallel with the first course to the west line of said Section; thence proceeding north along the west line of said Section to point of commencement;

Except Parcel 6, ANOKA COUNTY HIGHWAY RIGHT-OF-WAY PLAT NO. 16. And,

Outlot A, REGENCY POND, Anoka County, Minnesota.

Has caused the same to be surveyed and platted as RAMSEY STORAGE CENTER and does hereby dedicate to the public for public use the public way and the drainage and utility easements as created by this plat.

In witness whereof said Ramsey Storage Partners LLC., a Minnesota Limited Liability company, has caused these presents to be signed by its proper officer this \_\_\_\_\_ day of \_\_\_\_\_, 20\_\_\_\_.

**RAMSEY STORAGE PARTNERS, LLC.**

\_\_\_\_\_  
Bob Mikulak, President

STATE OF MINNESOTA  
COUNTY OF \_\_\_\_\_

This instrument was acknowledged before me this \_\_\_\_\_ day of \_\_\_\_\_, 20\_\_\_\_ by Bob Mikulak, President of Ramsey Storage Partners LLC., a Minnesota Limited Liability company, on behalf of the company.

\_\_\_\_\_  
Notary Public, \_\_\_\_\_ County, Minnesota

My Commission Expires \_\_\_\_\_

I Lynn P. Caswell do hereby certify that this plat was prepared by me or under my direct supervision; that I am a duly Licensed Land Surveyor in the State of Minnesota; that this plat is a correct representation of the boundary survey; that all mathematical data and labels are correctly designated on this plat; that all monuments depicted on this plat have been, or will be correctly set within one year; that all water boundaries and wet lands, as defined in Minnesota Statutes, Section 505.01, Subd. 3, as of the date of this certificate are shown and labeled on this plat; and all public ways are shown and labeled on this plat.

Dated this \_\_\_\_\_ day of \_\_\_\_\_, 20\_\_\_\_.

\_\_\_\_\_  
Lynn P. Caswell, Licensed Land Surveyor  
Minnesota License No. 13057

STATE OF MINNESOTA  
COUNTY OF \_\_\_\_\_

This instrument was acknowledged before me this \_\_\_\_\_ day of \_\_\_\_\_, 20\_\_\_\_ by Lynn P. Caswell.

\_\_\_\_\_  
Notary Public, \_\_\_\_\_ County, Minnesota

My Commission Expires \_\_\_\_\_

**CITY COUNCIL, CITY OF RAMSEY, MINNESOTA**

This plat of RAMSEY STORAGE CENTER was approved and accepted by the City Council of the City of Ramsey, Minnesota at a regular meeting thereof held this \_\_\_\_\_ day of \_\_\_\_\_, 20\_\_\_\_, and said plat is in compliance with the provisions of Minnesota Statutes, Section 505.03, Subd. 2.

**CITY COUNCIL, CITY OF RAMSEY, MINNESOTA**

By: \_\_\_\_\_, Mayor

By: \_\_\_\_\_, Clerk

**COUNTY SURVEYOR**

I hereby certify that in accordance with Minnesota Statutes, Section 505.021, Subd. 11, this plat has been reviewed and approved this \_\_\_\_\_ day of \_\_\_\_\_, 20\_\_\_\_.

By \_\_\_\_\_

Larry D. Hoium  
Anoka County Surveyor

**COUNTY AUDITOR/TREASURER**

Pursuant to Minnesota Statutes, Section 505.021, Subd. 9, taxes payable in the year 20\_\_\_\_ on the land hereinbefore described have been paid. Also, pursuant to Minnesota Statutes, Section 272.12, there are no delinquent taxes and transfer entered this \_\_\_\_\_ day of \_\_\_\_\_, 20\_\_\_\_.

\_\_\_\_\_  
Property Tax Administrator

By \_\_\_\_\_, Deputy

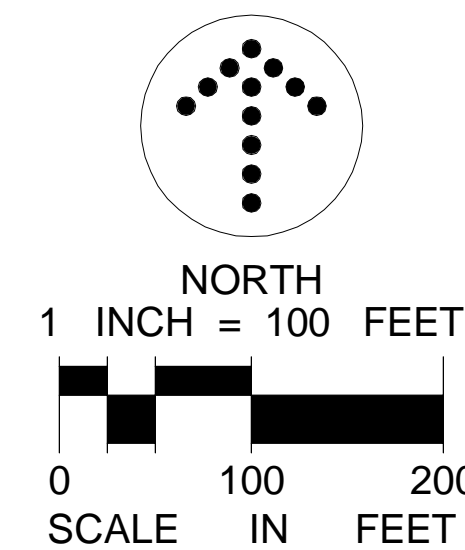
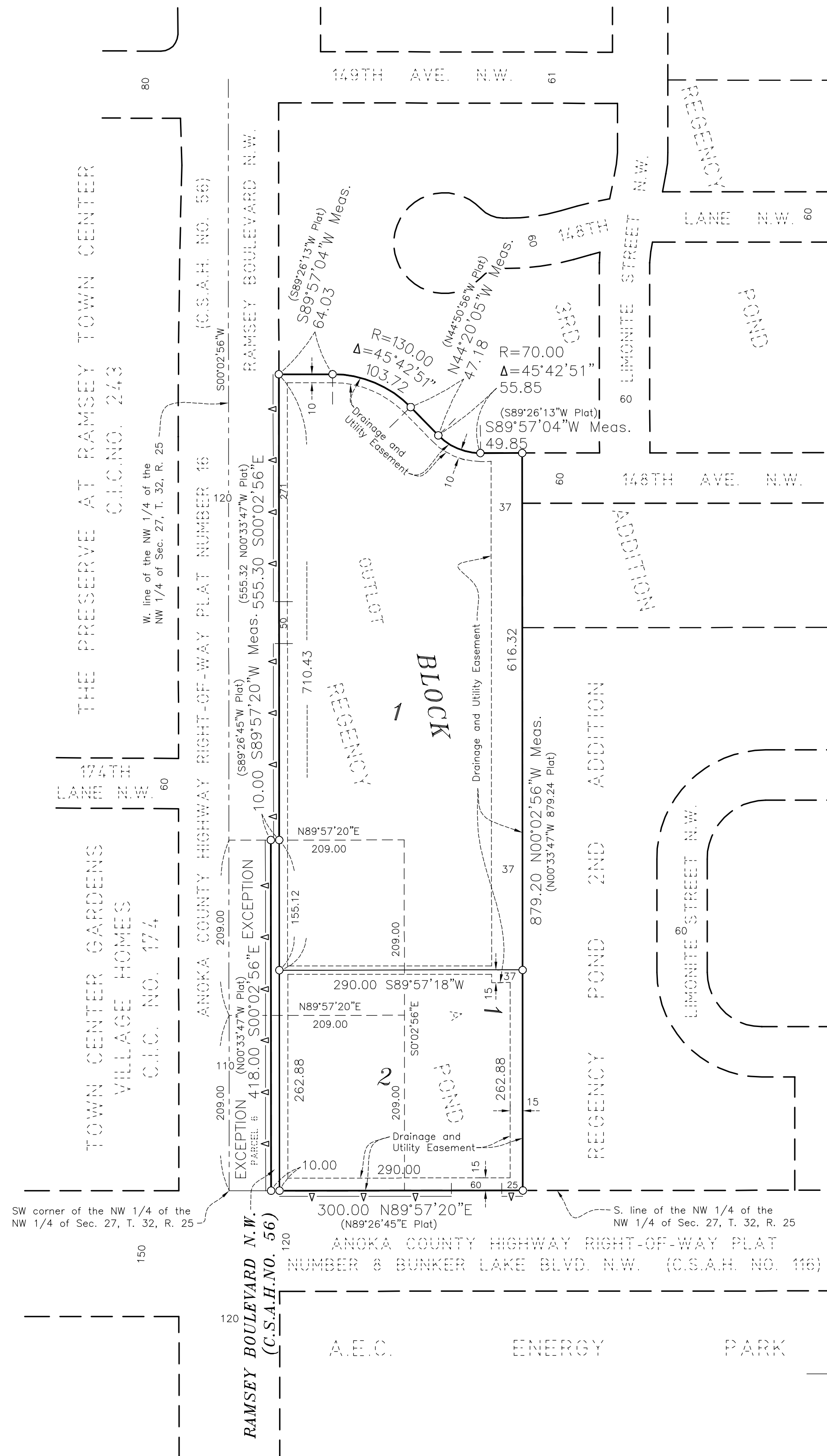
**COUNTY RECORDER/REGISTRAR OF TITLES  
COUNTY OF ANOKA, STATE OF MINNESOTA**

I hereby certify that this plat of RAMSEY STORAGE CENTER was filed in the office of the County Recorder/Registrar of Titles for public record on this \_\_\_\_\_ day of \_\_\_\_\_, 20\_\_\_\_, at \_\_\_\_\_ o'clock \_\_\_\_\_M. and was duly recorded in Book \_\_\_\_\_ Page \_\_\_\_\_, as Document Number \_\_\_\_\_.

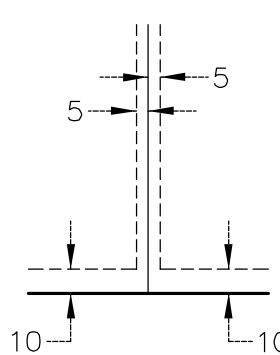
\_\_\_\_\_  
County Recorder/Registrar of Titles

By \_\_\_\_\_, Deputy

LANDFORM  
From Site to Finish



DRAINAGE AND UTILITY EASEMENTS  
ARE SHOWN THUS:  
(NOT TO SCALE)



Being 5 feet in width and adjoining lot lines, unless otherwise shown, and 10 feet in width and adjoining street lines unless otherwise shown on the plat.

▲ Denotes Right of Access dedicated to Anoka County.

● Denotes 1/2 inch iron pipe monument found.

○ Denotes 1/2 inch by 14 inch iron pipe monument set and marked by License no. 48176.

Bearings shown are based on the West line of the Northwest 1/4 of the Northwest 1/4 of Sec. 27, T. 32, R. 25, which has an assumed bearing of S00°02'56\"/>