

PORCH FOOTING SUPPORT
REQUIRED ON-SITE BY
OTHERS

WIND UPLIFT ATTACHMENT
FOR PORCH
ON-SITE BY OTHERS

15'-0" GARAGE ON-SITE BY OTHERS

RETEXT: file open error

1st Floor
1620 sq ft
Perimeter 168'-0" ft

PRELIMINARY PRINT:
NOT FOR CONSTRUCTION
WISCONSIN HOMES, INC.

Ideas for porch revisions:

- swap window and /or porch rails for other details: lighting, columns, or wider door/window frame
- Minimize # of columns from 4 to 2 - make the two wider with articulation
- Pull columns in from edge of porch
- Wider steps
- Wider trim
- Rock / stone only an option for base of porch



FYI unclear from CAD what this condition is in the front elevation (applies to all concepts)

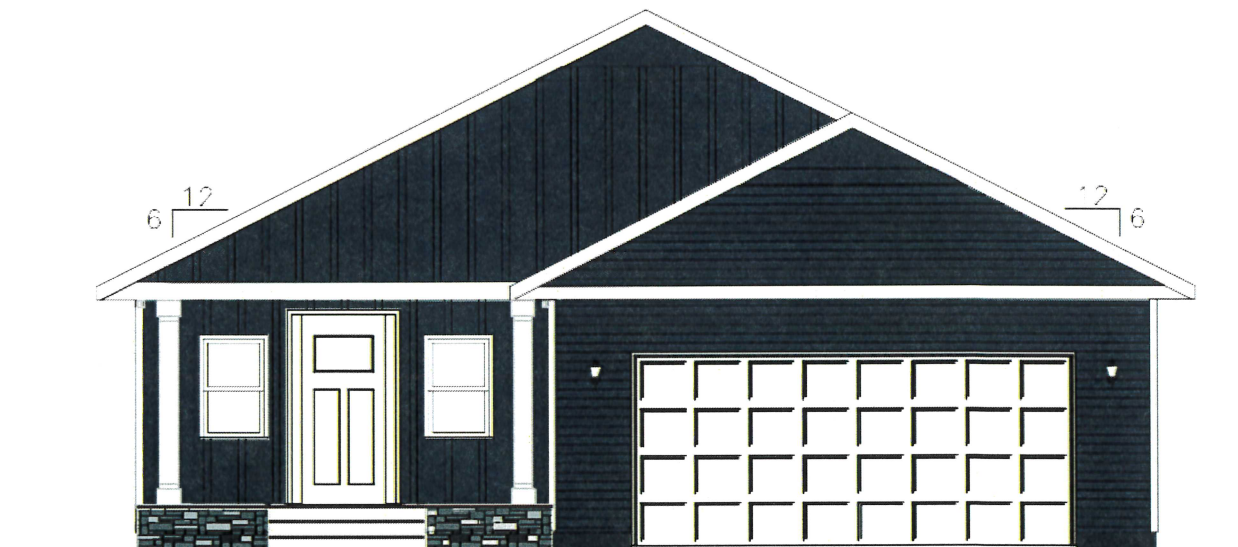
- wider door/window frame



- wider door/window frame
- wider steps up to porch
- wider trim details
- add trim detail between bottom of vinyl and top of concrete slab?



- with porch rails, make opening in railing wider
- no regular windows, add lights instead



- no side windows on door, two regular windows
- stone on base on porch