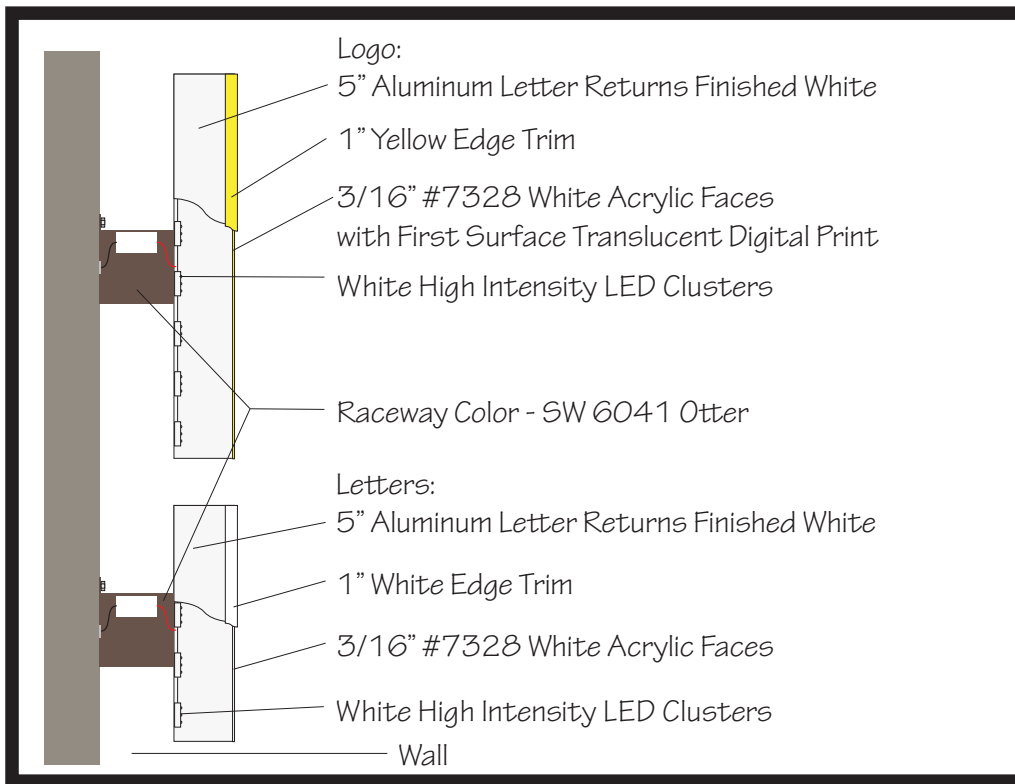
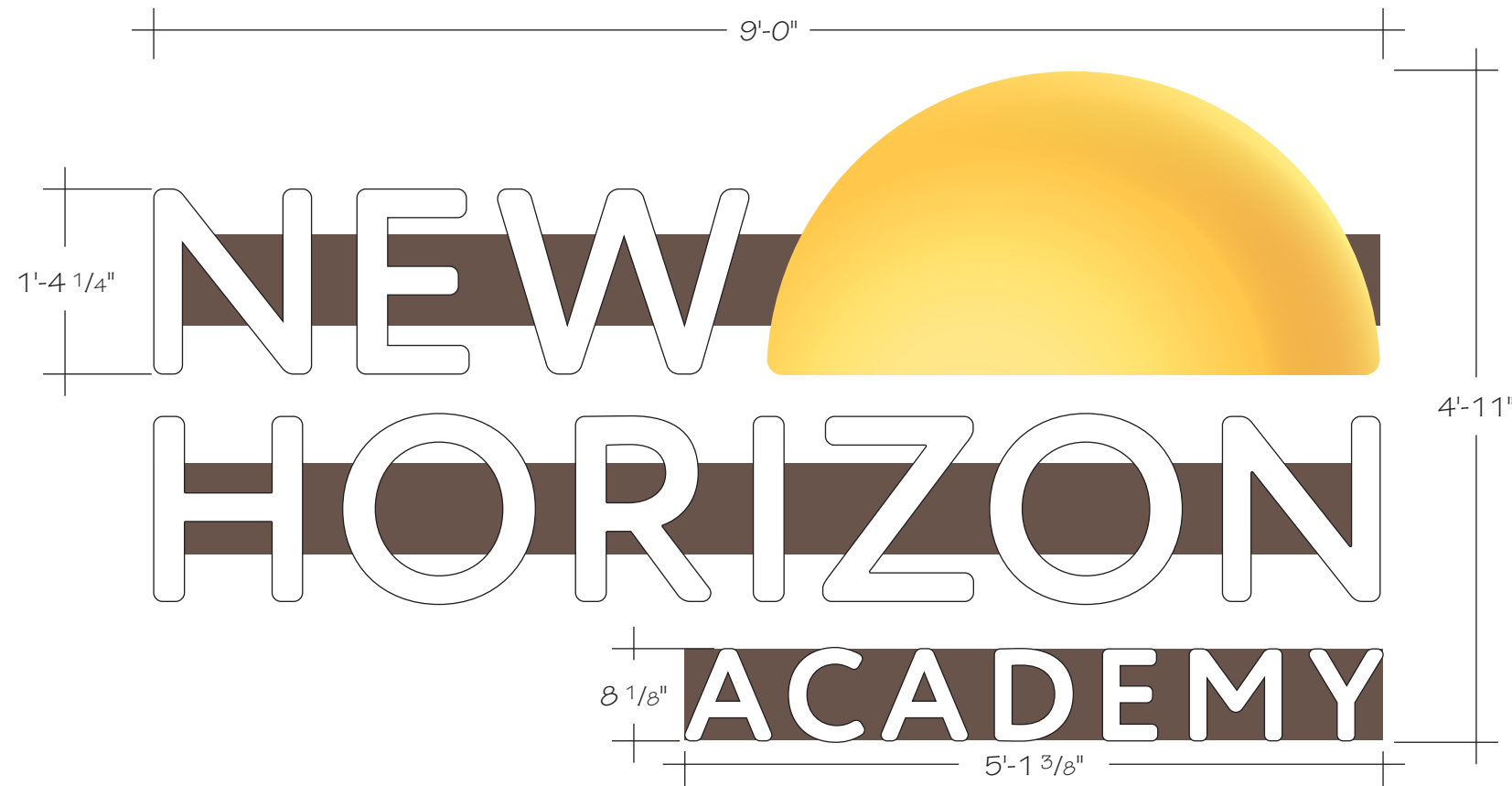


1 | New Horizon Academy - Ramsey - South Elevation

190787E



Side View

Furnish and Install (1) 4'-11" x 9'-0" LED Illuminated Raceway Mount Exterior Logo Display (44.25 SF)



8786 W 35W Service Dr
Blaine, MN 55449
763.432.7447 OFFICE
763.208.9159 FAX
www.spectrum-signs.com

CLIENT INFORMATION

New Horizon Academy
Jared Olson
3405 Annapolis Lane North
Suite 100
Plymouth, MN 55447
PHONE
612-998-4317

JOBSITE

7800 Sunwood Dr
Ramsey, MN 55303

DATE/REVISIONS

11-19-19	
2-4-20	

DESIGNER

Alex Wasnick

SALESPERSON

Eric Tauscheck

This drawing is the exclusive property of Spectrum Sign Systems, Inc. It is not to be produced or duplicated without the written consent of Spectrum Sign Systems, Inc. Distribution of this drawing for the purpose of constructing the sign by anyone other than Spectrum Sign Systems, Inc., is strictly prohibited. If such an event occurs Spectrum Sign Systems will be reimbursed \$1,000.00 per occurrence.

Customer Approval

Date

2 | New Horizon Academy - Ramsey - South Elevation

190787E



8786 W 35W Service Dr
Blaine, MN 55449
763.432.7447 OFFICE
763.208.9159 FAX
www.spectrum-signs.com



Proposed Sign - South Elevation



Existing Sign to be Removed

CLIENT INFORMATION

New Horizon Academy

Jared Olson

3405 Annapolis Lane North

Suite 100

Plymouth, MN 55447

PHONE

612-998-4317

JOBSITE

7800 Sunwood Dr

Ramsey, MN 55303

DATE/REVISIONS

11-19-19

2-4-20

DESIGNER

Alex Wasnick

SALESPERSON

Eric Tauscheck

This drawing is the exclusive property of Spectrum Sign Systems, Inc. It is not to be produced or duplicated without the written consent of Spectrum Sign Systems, Inc. Distribution of this drawing for the purpose of constructing the sign by anyone other than Spectrum Sign Systems, Inc., is strictly prohibited. If such an event occurs Spectrum Sign Systems will be reimbursed \$1,000.00 per occurrence.

Customer Approval

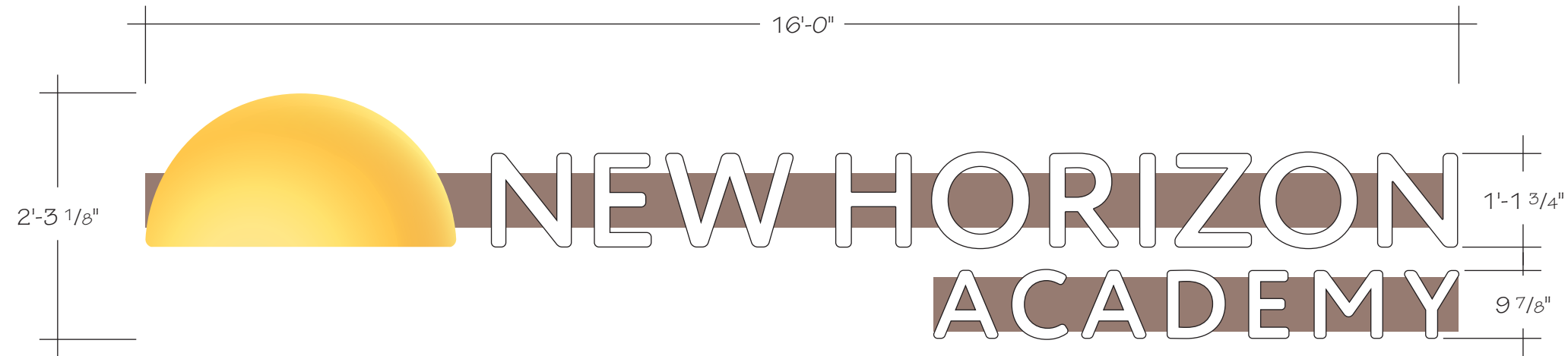
Date

3 | New Horizon Academy - Ramsey - East Elevation

190787E



8786 W 35W Service Dr
Blaine, MN 55449
763.432.7447 OFFICE
763.208.9159 FAX
www.spectrum-signs.com



CLIENT INFORMATION

New Horizon Academy
Jared Olson
3405 Annapolis Lane North
Suite 100
Plymouth, MN 55447
PHONE
612-998-4317

JOBSITE

7800 Sunwood Dr
Ramsey, MN 55303

DATE/REVISIONS

11-19-19	
2-4-20	

DESIGNER

Alex Wasnick

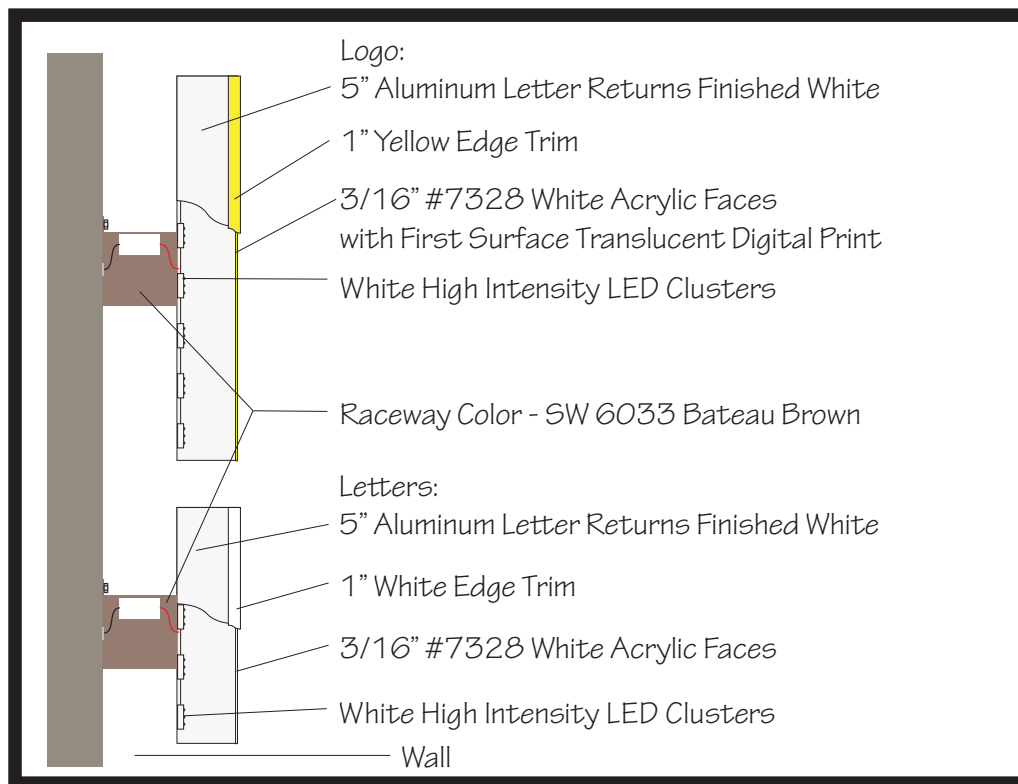
SALESPERSON

Eric Tauscheck

This drawing is the exclusive property of Spectrum Sign Systems, Inc. It is not to be produced or duplicated without the written consent of Spectrum Sign Systems, Inc. Distribution of this drawing for the purpose of constructing the sign by anyone other than Spectrum Sign Systems, Inc., is strictly prohibited. If such an event occurs Spectrum Sign Systems will be reimbursed \$1,000.00 per occurrence.

Customer Approval

Date



Side View

Furnish and Install (1) 2'-3 1/8" x 16'-0" LED Illuminated Raceway Mount Exterior Logo Display (36.16 SF)

4 | New Horizon Academy - Ramsey - East Elevation

190787E



8786 W 35W Service Dr
Blaine, MN 55449
763.432.7447 OFFICE
763.208.9159 FAX
www.spectrum-signs.com



Proposed Sign - East Elevation

CLIENT INFORMATION

New Horizon Academy

Jared Olson

3405 Annapolis Lane North

Suite 100

Plymouth, MN 55447

PHONE

612-998-4317

JOBSITE

7800 Sunwood Dr

Ramsey, MN 55303

DATE/REVISIONS

11-19-19

2-4-20

DESIGNER

Alex Wasnick

SALESPERSON

Eric Tauscheck

This drawing is the exclusive property of Spectrum Sign Systems, Inc. It is not to be produced or duplicated without the written consent of Spectrum Sign Systems, Inc. Distribution of this drawing for the purpose of constructing the sign by anyone other than Spectrum Sign Systems, Inc., is strictly prohibited. If such an event occurs Spectrum Sign Systems will be reimbursed \$1,000.00 per occurrence.

Customer Approval

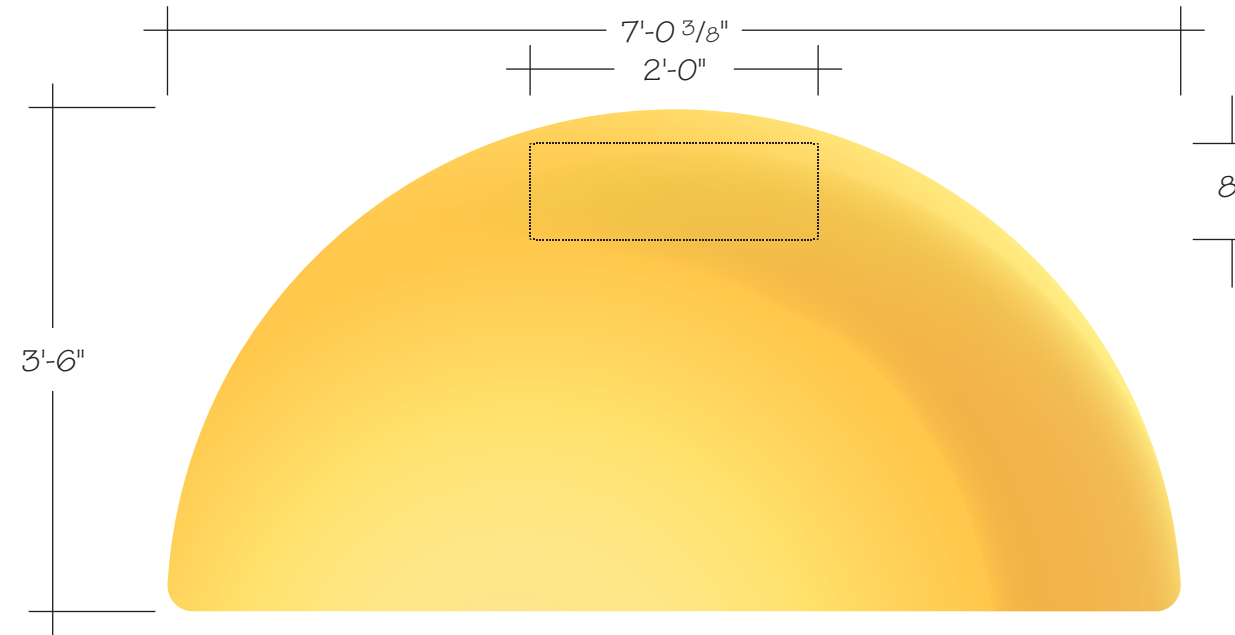
Date

5 | New Horizon Academy - Ramsey - North Elevation

190787E



8786 W 35W Service Dr
Blaine, MN 55449
763.432.7447 OFFICE
763.208.9159 FAX
www.spectrum-signs.com



CLIENT INFORMATION

New Horizon Academy
Jared Olson
3405 Annapolis Lane North
Suite 100
Plymouth, MN 55447

PHONE

612-998-4317

JOBSITE

7800 Sunwood Dr
Ramsey, MN 55303

DATE/REVISIONS

11-19-19	
2-4-20	

DESIGNER

Alex Wasnick

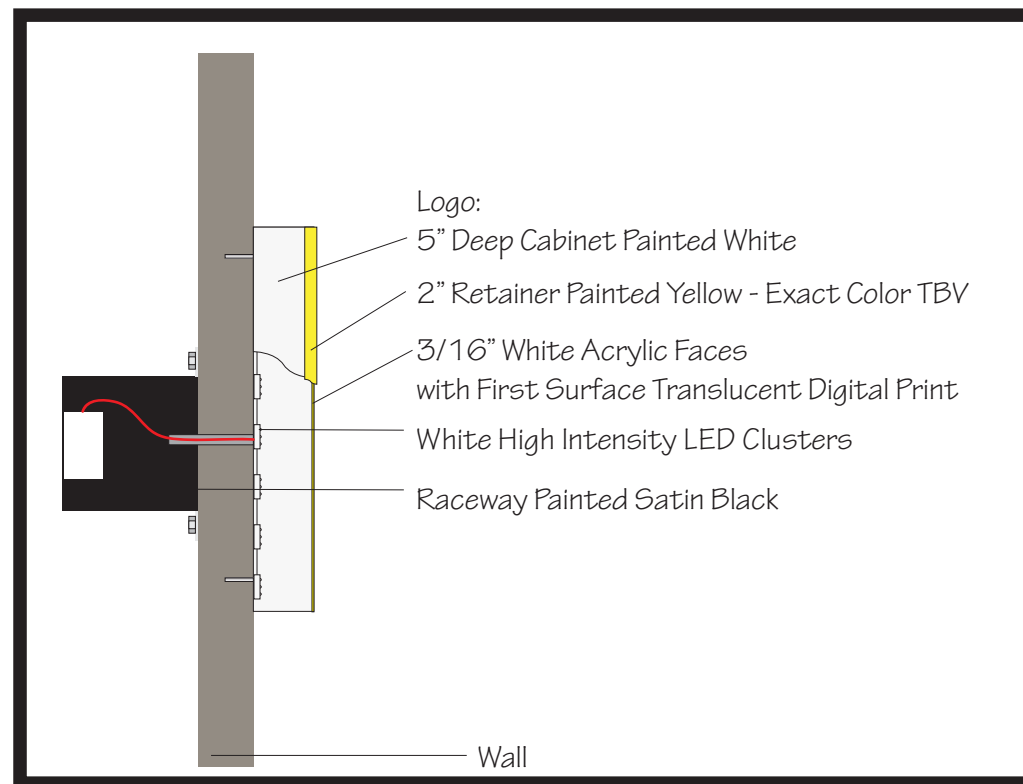
SALESPERSON

Eric Tauscheck

This drawing is the exclusive property of Spectrum Sign Systems, Inc. It is not to be produced or duplicated without the written consent of Spectrum Sign Systems, Inc. Distribution of this drawing for the purpose of constructing the sign by anyone other than Spectrum Sign Systems, Inc., is strictly prohibited. If such an event occurs Spectrum Sign Systems will be reimbursed \$1,000.00 per occurrence.

Customer Approval

Date



Side View

Furnish and Install (1) 3'-6" x 7'-0 3/8" LED Illuminated Remote Mount Exterior Logo Display with Raceway on Backside of Parapet Wall (24.6 SF)

6 | New Horizon Academy - Ramsey - North Elevation

190787E



8786 W 35W Service Dr
Blaine, MN 55449
763.432.7447 OFFICE
763.208.9159 FAX
www.spectrum-signs.com

CLIENT INFORMATION

New Horizon Academy

Jared Olson

3405 Annapolis Lane North

Suite 100

Plymouth, MN 55447

PHONE

612-998-4317

JOBSITE

7800 Sunwood Dr

Ramsey, MN 55303

DATE/REVISIONS

11-19-19	
2-4-20	

DESIGNER

Alex Wasnick

SALESPERSON

Eric Tauscheck

This drawing is the exclusive property of Spectrum Sign Systems, Inc. It is not to be produced or duplicated without the written consent of Spectrum Sign Systems, Inc. Distribution of this drawing for the purpose of constructing the sign by anyone other than Spectrum Sign Systems, Inc., is strictly prohibited. If such an event occurs Spectrum Sign Systems will be reimbursed \$1,000.00 per occurrence.

Customer Approval

Date



Proposed Sign - North Elevation



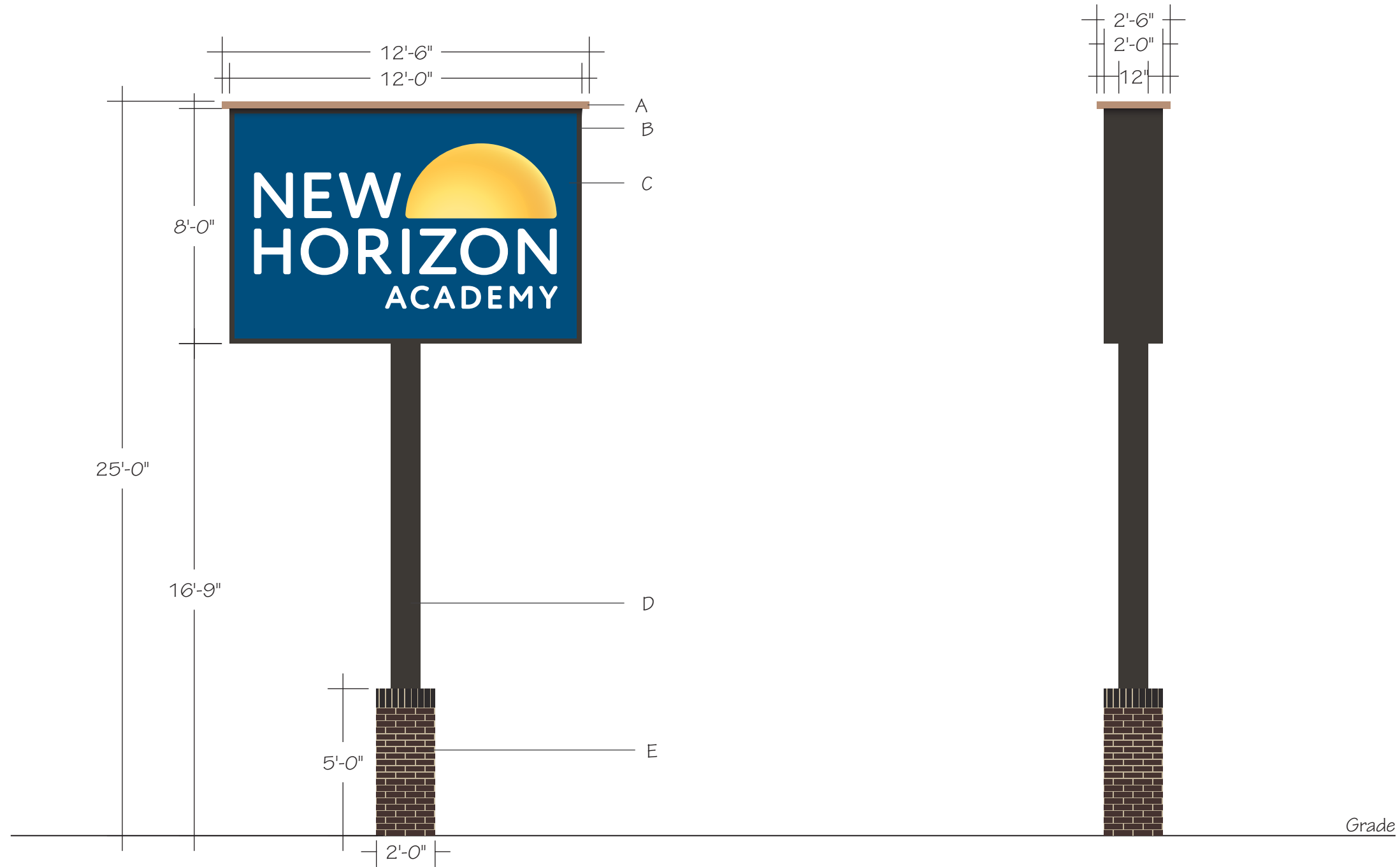
Existing Sign to be Removed

7 | New Horizon Academy - Ramsey - Pole Sign

190787E



8786 W 35W Service Dr
Blaine, MN 55449
763.432.7447 OFFICE
763.208.9159 FAX
www.spectrum-signs.com



Furnish and Install (1) 8'-0" x 12'-0" D/F LED Illuminated Pole Sign (96 SF)

- A. Aluminum Cap Painted to Match Building - Color TBV
- B. 8' x 12' x 2' D/F Cabinet with 2" Retainers Painted Dark Bronze
- C. Digitally Printed Translucent Flex Face - Background to Match Pantone 301 C
- D. 12" Diameter Schedule 40 Pole Painted Dark Bronze
- E. Brick Base to Match Masonry on Building - Brick and Grout Color TBV

- Due to variances among color monitors, the colors shown may vary from actual finish color -

CLIENT INFORMATION

New Horizon Academy
Jared Olson
3405 Annapolis Lane North
Suite 100
Plymouth, MN 55447
PHONE
612-998-4317

JOBSITE

7800 Sunwood Dr
Ramsey, MN 55303

DATE/REVISIONS

11-19-19	
2-4-20	

DESIGNER

Alex Wasnick

SALESPERSON

Eric Tauscheck

This drawing is the exclusive property of Spectrum Sign Systems, Inc. It is not to be produced or duplicated without the written consent of Spectrum Sign Systems, Inc. Distribution of this drawing for the purpose of constructing the sign by anyone other than Spectrum Sign Systems, Inc., is strictly prohibited. If such an event occurs Spectrum Sign Systems will be reimbursed \$1,000.00 per occurrence.

Customer Approval

Date

8 | New Horizon Academy - Ramsey - Pole Sign

190787E



8786 W 35W Service Dr
Blaine, MN 55449
763.432.7447 OFFICE
763.208.9159 FAX
www.spectrum-signs.com



Proposed Sign - East Face

CLIENT INFORMATION

New Horizon Academy

Jared Olson

3405 Annapolis Lane North

Suite 100

Plymouth, MN 55447

PHONE

612-998-4317

JOBSITE

7800 Sunwood Dr

Ramsey, MN 55303

DATE/REVISIONS

11-19-19

2-4-20

DESIGNER

Alex Wasnick

SALESPERSON

Eric Tauscheck

This drawing is the exclusive property of Spectrum Sign Systems, Inc. It is not to be produced or duplicated without the written consent of Spectrum Sign Systems, Inc. Distribution of this drawing for the purpose of constructing the sign by anyone other than Spectrum Sign Systems, Inc., is strictly prohibited. If such an event occurs Spectrum Sign Systems will be reimbursed \$1,000.00 per occurrence.

Customer Approval

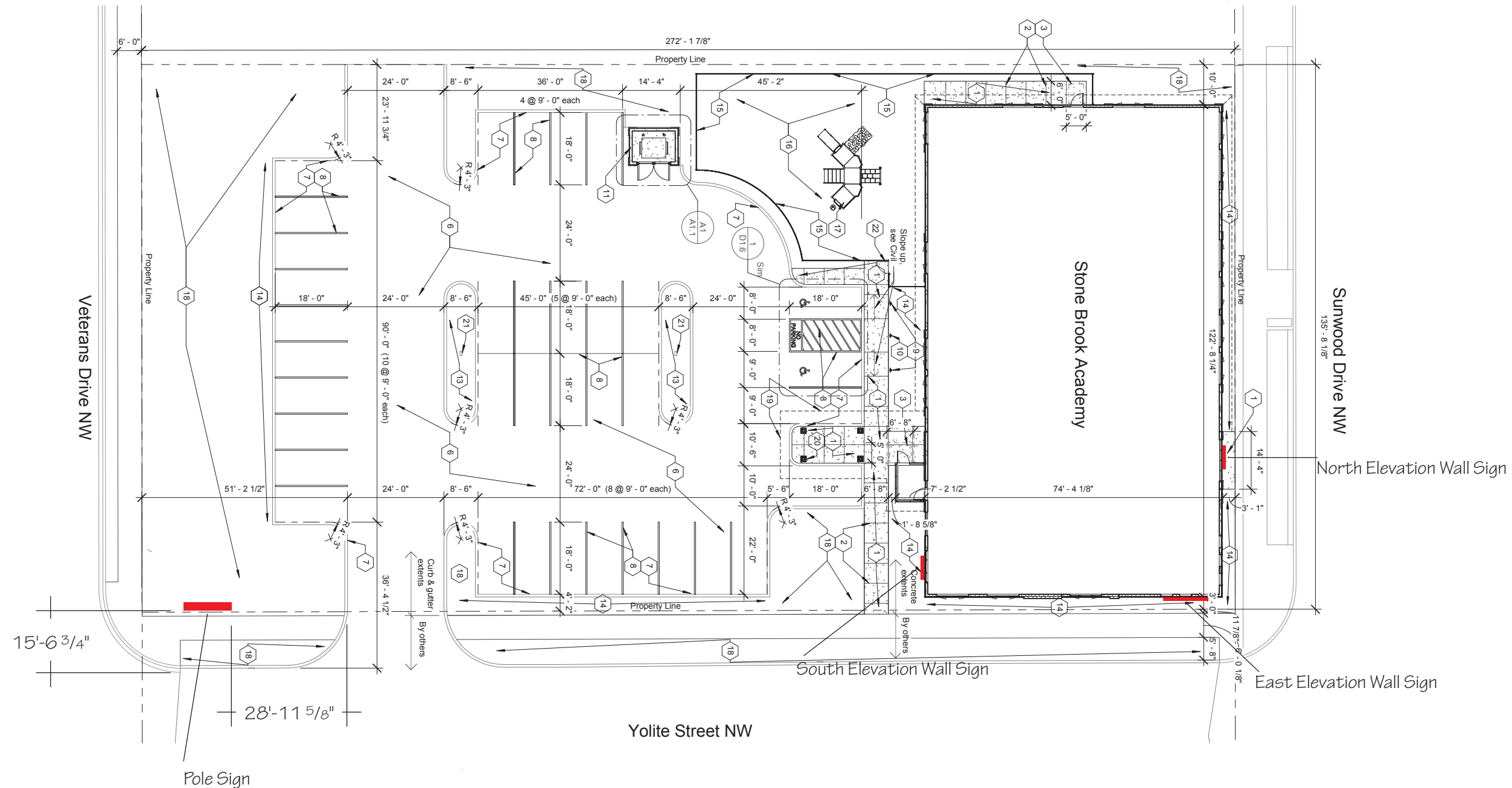
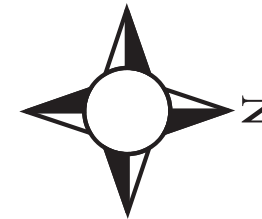
Date

9 New Horizon Academy - Ramsey - Site Map

190787E



8786 W 35W Service Dr
Blaine, MN 55449
763.432.7447 OFFICE
763.208.9159 FAX
www.spectrum-signs.com



Scale: 1/4" = 7'-3 1/4"

CLIENT INFORMATION

New Horizon Academy
Jared Olson
3405 Annapolis Lane North
Suite 100
Plymouth, MN 55447
PHONE
612-998-4317

JOBSITE

7800 Sunwood Dr
Ramsey, MN 55303

DATE/REVISIONS

11-19-19	
2-4-20	

DESIGNER

Alex Wasnick

SALESPERSON

Eric Tauscheck

This drawing is the exclusive property of Spectrum Sign Systems, Inc. It is not to be produced or duplicated without the written consent of Spectrum Sign Systems, Inc. Distribution of this drawing for the purpose of constructing the sign by anyone other than Spectrum Sign Systems, Inc., is strictly prohibited. If such an event occurs Spectrum Sign Systems will be reimbursed \$1,000.00 per occurrence.

Customer Approval

Date

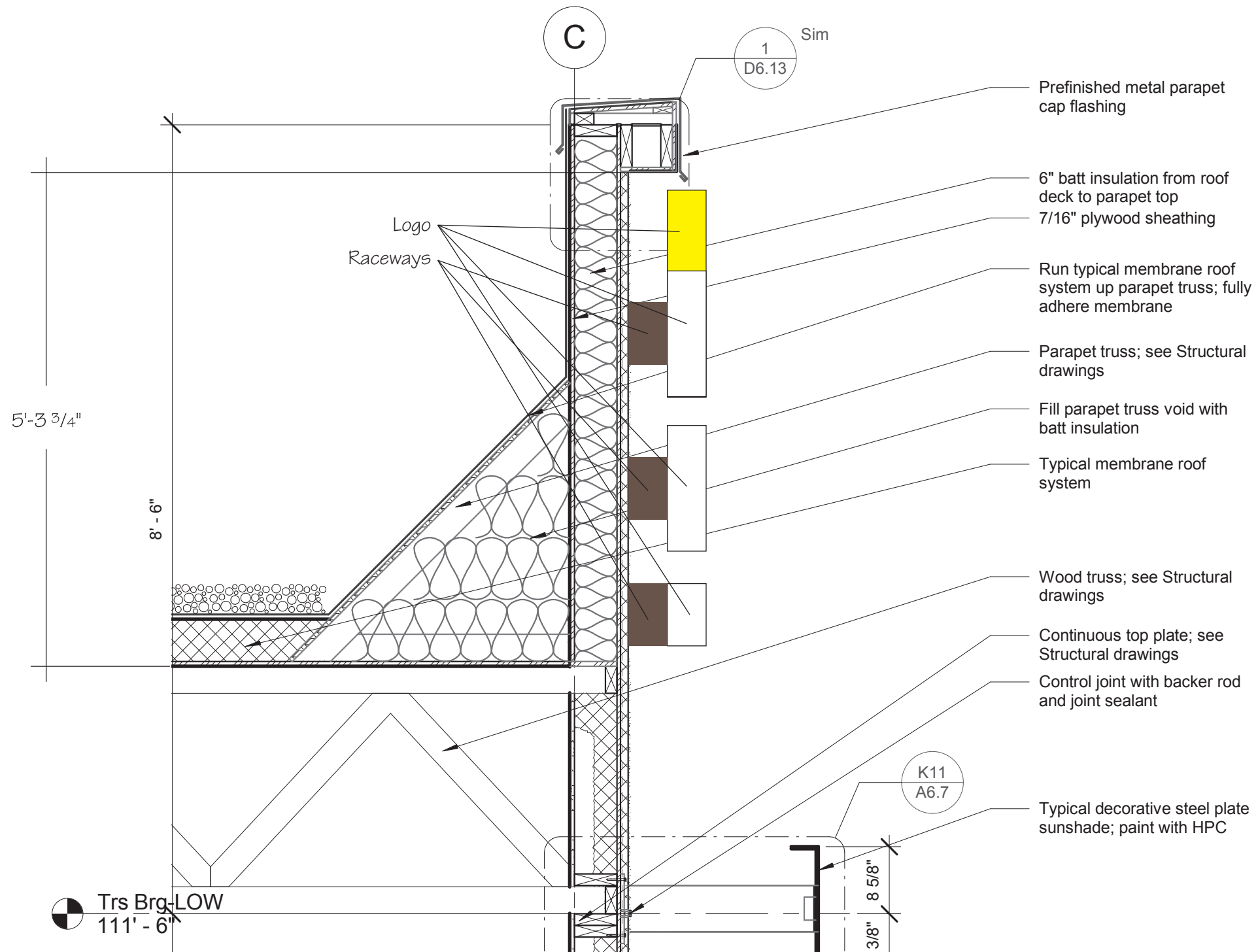
- Due to variances among color monitors, the colors shown may vary from actual finish color -

10 New Horizon Academy - Ramsey - South Elevation Wall Section

190787E



8786 W 35W Service Dr
Blaine, MN 55449
763.432.7447 OFFICE
763.208.9159 FAX
www.spectrum-signs.com



CLIENT INFORMATION

New Horizon Academy
Jared Olson
3405 Annapolis Lane North
Suite 100
Plymouth, MN 55447
PHONE
612-998-4317

JOBSITE

7800 Sunwood Dr
Ramsey, MN 55303

DATE/REVISIONS

11-19-19	
2-4-20	

DESIGNER

Alex Wasnick

SALESPERSON

Eric Tauscheck

This drawing is the exclusive property of Spectrum Sign Systems, Inc. It is not to be produced or duplicated without the written consent of Spectrum Sign Systems, Inc. Distribution of this drawing for the purpose of constructing the sign by anyone other than Spectrum Sign Systems, Inc., is strictly prohibited. If such an event occurs Spectrum Sign Systems will be reimbursed \$1,000.00 per occurrence.

Customer Approval

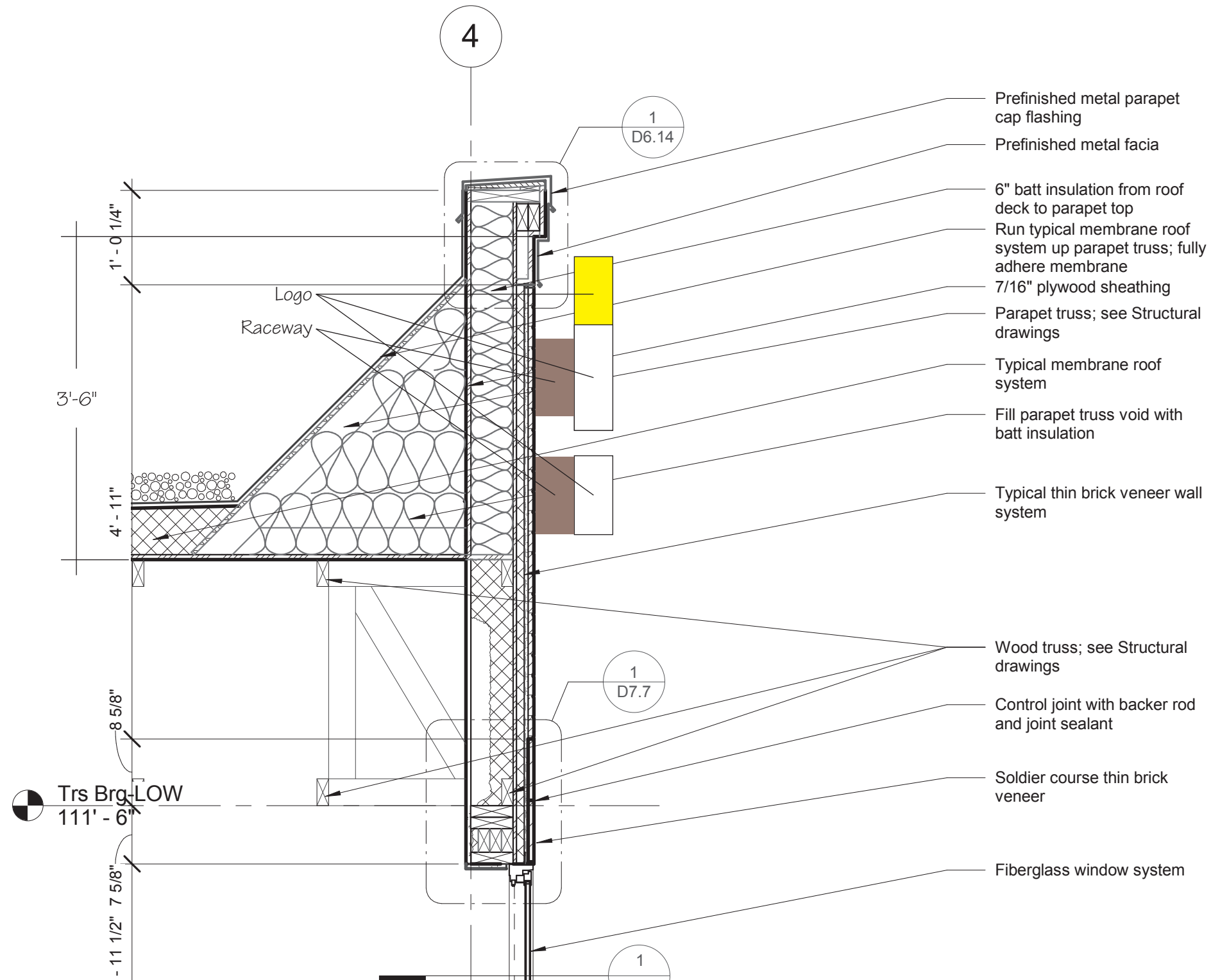
Date

11 New Horizon Academy - Ramsey - East Elevation Wall Section

190787E



8786 W 35W Service Dr
Blaine, MN 55449
763.432.7447 OFFICE
763.208.9159 FAX
www.spectrum-signs.com



- Prefinished metal parapet cap flashing
- Prefinished metal fascia
- 6" batt insulation from roof deck to parapet top
- Run typical membrane roof system up parapet truss; fully adhere membrane
- 7/16" plywood sheathing
- Parapet truss; see Structural drawings
- Typical membrane roof system
- Fill parapet truss void with batt insulation
- Typical thin brick veneer wall system
- Wood truss; see Structural drawings
- Control joint with backer rod and joint sealant
- Soldier course thin brick veneer
- Fiberglass window system

CLIENT INFORMATION

New Horizon Academy
Jared Olson
3405 Annapolis Lane North
Suite 100
Plymouth, MN 55447
PHONE
612-998-4317

JOBSITE

7800 Sunwood Dr
Ramsey, MN 55303

DATE/REVISIONS

11-19-19	
2-4-20	

DESIGNER

Alex Wasnick

SALESPERSON

Eric Tauscheck

This drawing is the exclusive property of Spectrum Sign Systems, Inc. It is not to be produced or duplicated without the written consent of Spectrum Sign Systems, Inc. Distribution of this drawing for the purpose of constructing the sign by anyone other than Spectrum Sign Systems, Inc., is strictly prohibited. If such an event occurs Spectrum Sign Systems will be reimbursed \$1,000.00 per occurrence.

Customer Approval

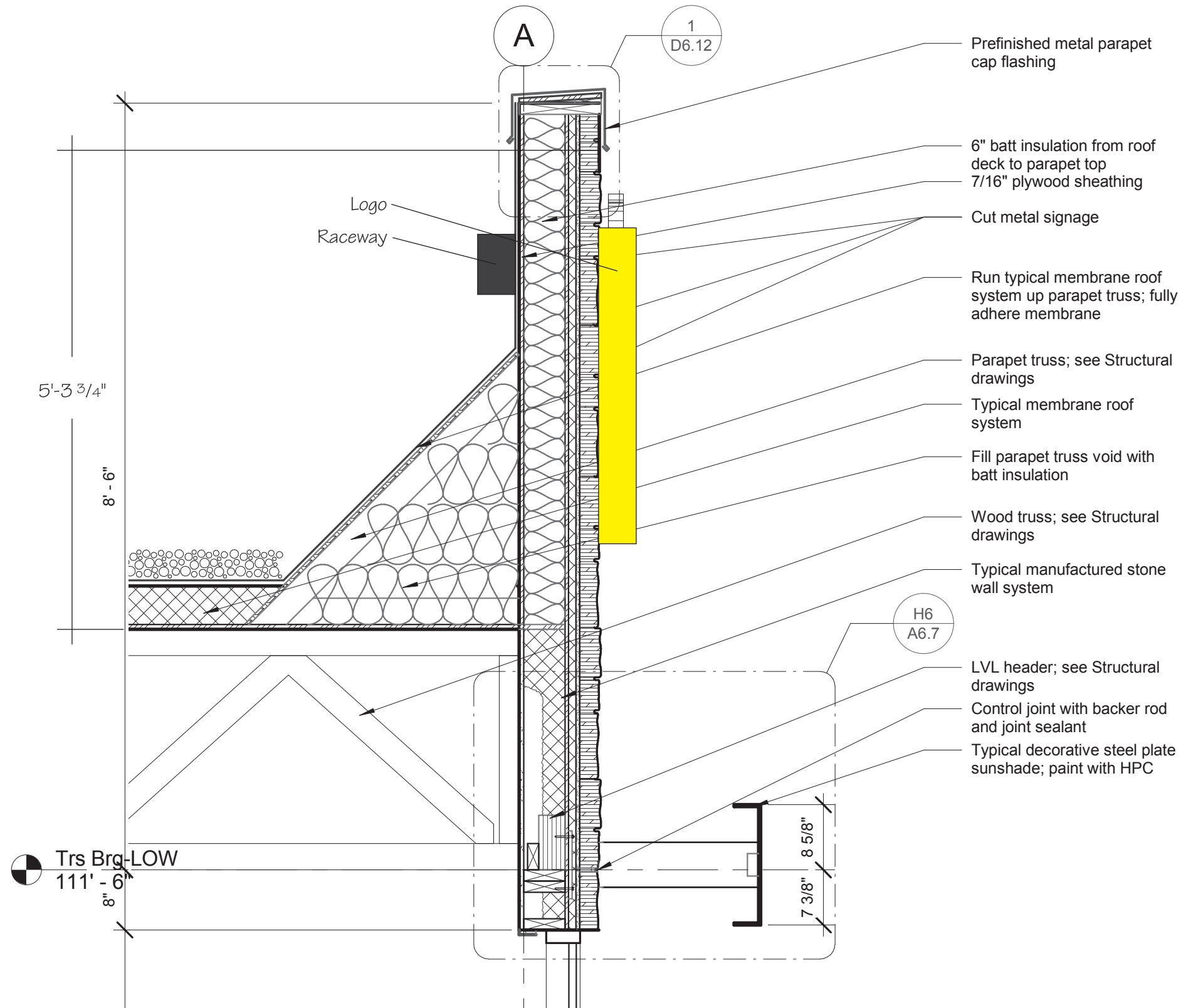
Date

12 | New Horizon Academy - Ramsey - North Elevation Wall Section

190787E



8786 W 35W Service Dr
Blaine, MN 55449
763.432.7447 OFFICE
763.208.9159 FAX
www.spectrum-signs.com



CLIENT INFORMATION

New Horizon Academy
Jared Olson
3405 Annapolis Lane North
Suite 100
Plymouth, MN 55447
PHONE
612-998-4317

JOBSITE

7800 Sunwood Dr
Ramsey, MN 55303

DATE/REVISIONS

11-19-19	
2-4-20	

DESIGNER

Alex Wasnick

SALESPERSON

Eric Tauscheck

This drawing is the exclusive property of Spectrum Sign Systems, Inc. It is not to be produced or duplicated without the written consent of Spectrum Sign Systems, Inc. Distribution of this drawing for the purpose of constructing the sign by anyone other than Spectrum Sign Systems, Inc., is strictly prohibited. If such an event occurs Spectrum Sign Systems will be reimbursed \$1,000.00 per occurrence.

Customer Approval

Date