

COBBLESTONE ADDITION

CITY OF RAMSEY
 COUNTY OF ANOKA
 SEC. 28, T. 32, R. 25

KNOW ALL PERSONS BY THESE PRESENTS: That the City of Ramsey, a Minnesota municipal corporation, owner of the following described property:

Outlot A, COR STONE BROOK ACADEMY, Anoka County, Minnesota.

Has caused the same to be surveyed and platted as COBBLESTONE ADDITION, and does hereby dedicate the easements as shown on this plat for drainage and utility purposes only.

In witness whereof said City of Ramsey, a Minnesota municipal corporation, has caused these presents to be signed by its proper officer this ____ day of _____, 20____.

SIGNED: City of Ramsey

By: _____ Mayor By: _____ Clerk

STATE OF MINNESOTA
 COUNTY OF _____

The foregoing instrument was acknowledged before me this ____ day of _____, 20____, by _____, as Mayor and _____, as Clerk of City of Ramsey, a Minnesota municipal corporation, on behalf of the corporation.

Notary Public, _____ County, Minnesota Notary Printed Name
 My Commission Expires _____

I, Jeremy R. Honga do hereby certify that this plat was prepared by me or under my direct supervision; that I am a duly Licensed Land Surveyor in the State of Minnesota; that this plat is a correct representation of the boundary survey; that all mathematical data and labels are correctly designated on this plat; that all monuments depicted on this plat have been, or will be correctly set within one year; that all water boundaries and wet lands, as defined in Minnesota Statutes, Section 505.01, Subd. 3, as of the date of this certificate are shown and labeled on this Plat; and all public ways are shown and labeled on this plat.

Dated this ____ day of _____, 20____.

Jeremy R. Honga, Licensed Land Surveyor,
 Minnesota License No. 58013

STATE OF MINNESOTA
 COUNTY OF _____

The foregoing instrument was acknowledged before me this ____ day of _____, 20____, by Jeremy R. Honga, a Licensed Land Surveyor.

Notary Public, _____ County, Minnesota Notary Printed Name
 My Commission Expires _____

RAMSEY, MINNESOTA

This plat of COBBLESTONE ADDITION was approved and accepted by the City Council of the City of Ramsey, Minnesota, at a regular meeting thereof held this ____ day of _____, 20____, and said plat is in compliance with the provisions of Minnesota Statutes, Section 505.03, Subd. 2.

City Council, Shorewood, Minnesota

By: _____ Mayor By: _____ Clerk

COUNTY SURVEYOR, Anoka County, Minnesota

I hereby certify that in accordance with Minnesota Statutes, Section 505.021, Subd. 11, this plat has been reviewed and approved this ____ day of _____, 20____.

By: _____
 Anoka County Surveyor

COUNTY AUDITOR/TREASURER, Anoka County, Minnesota

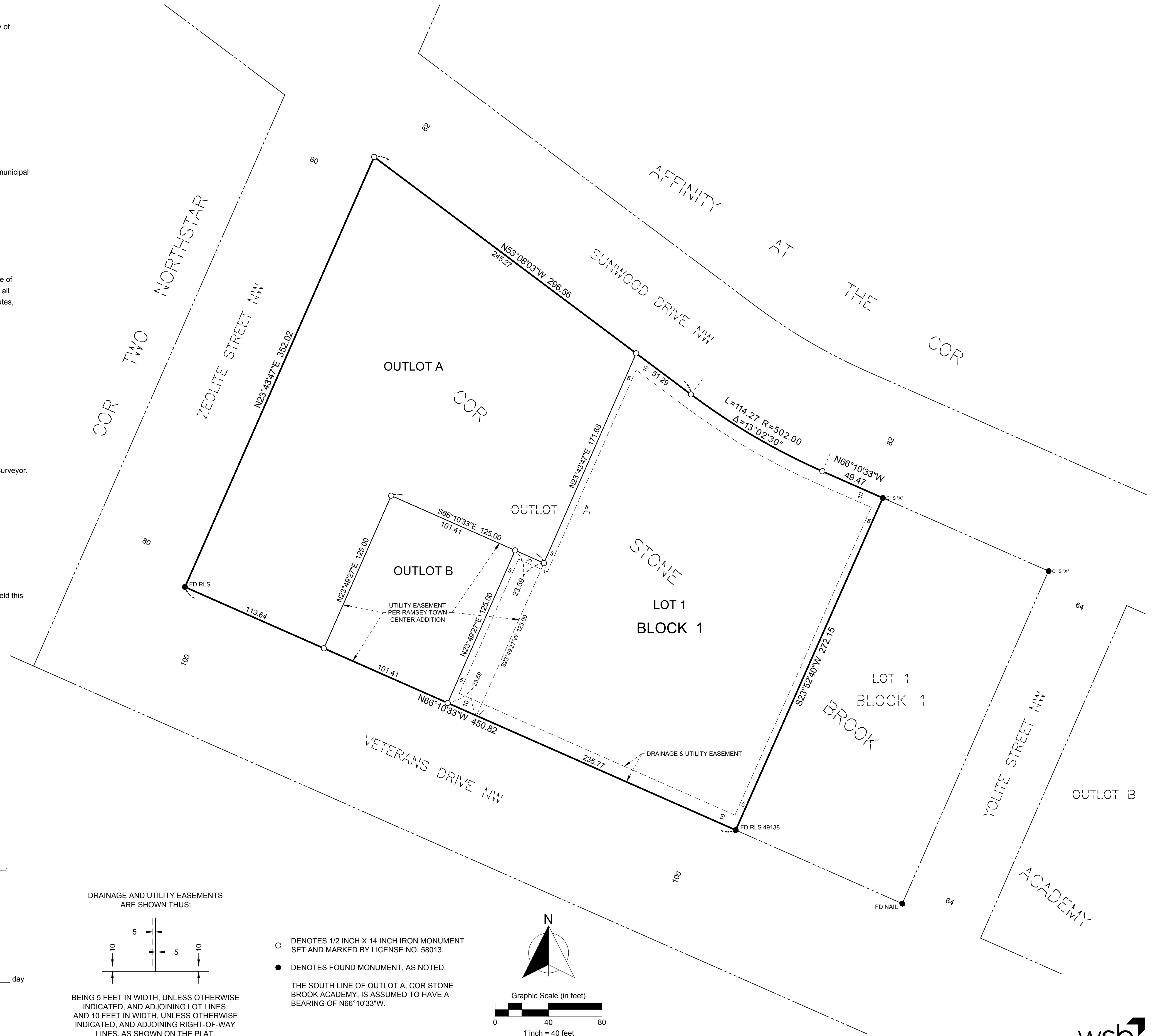
Pursuant to Minnesota Statutes, Section 505.021, Subd. 9, taxes payable in the year 20____ on the land hereinbefore described have been paid. Also, pursuant to Minnesota Statutes, Section 272.12, there are no delinquent taxes and transfer entered this ____ day of _____, 20____.

By: _____, Deputy
 Property Tax Administrator

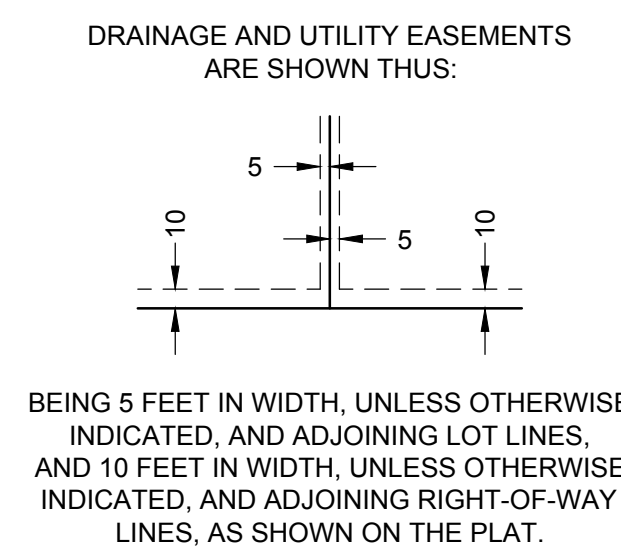
COUNTY RECORDER/REGISTRAR OF TITLES, Anoka County, Minnesota

I hereby certify that this plat of COBBLESTONE ADDITION was filed in the office of the County Recorder/Registrar of Titles for public record on this ____ day of _____, 20____, at ____ o'clock ____ M., and was duly recorded as Document Number _____.

By: _____, Deputy
 County Recorder/Registrar of Titles



DRAFT - FINAL PLAT - 2020-06-04



- DENOTES 1/2 INCH X 14 INCH IRON MONUMENT SET AND MARKED BY LICENSE NO. 58013.
 - DENOTES FOUND MONUMENT, AS NOTED.
- THE SOUTH LINE OF OUTLOT A, COR STONE BROOK ACADEMY, IS ASSUMED TO HAVE A BEARING OF N66°10'33"W.

