

Installation in accordance with
2015 Minnesota Plumbing Code
CITY ENGINEERS ASSOCIATION OF MINNESOTA
STANDARD SPECIFICATIONS

2600 Trench Excavation and Backfill/Surface
Restoration
2611 Watermain and Service Line Installation
2621 Sanitary Sewer and Storm Sewer
Installation

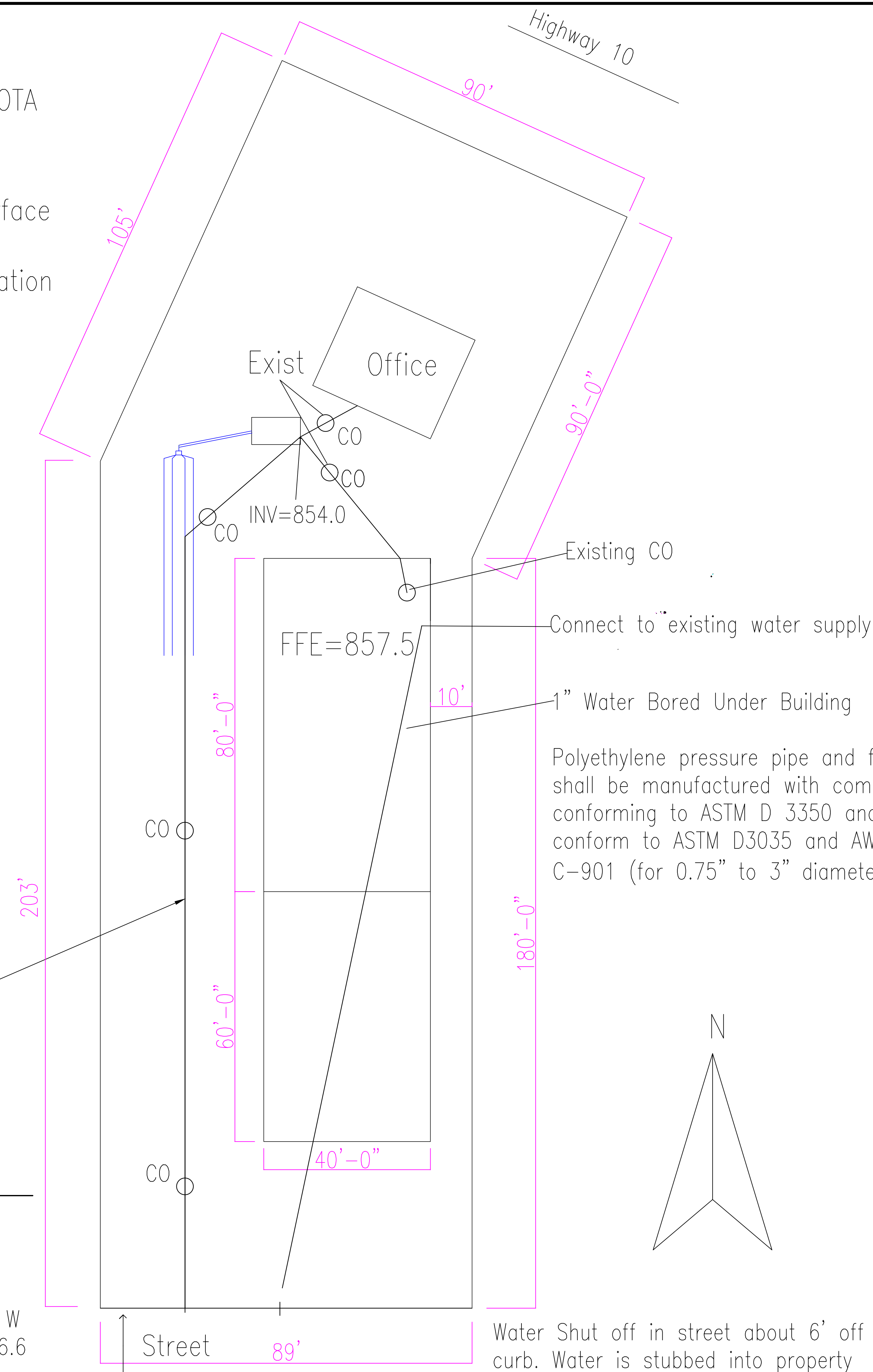
Legal
THAT PART OF LOT 5 AND SUB NO 96 LYING NLY OF A LINE PRL/W & 33 FT NLY OF FOL DESC LINE "A" & LYING SLY OF FOL DESC LINE: COM AT MEANDER COR OF W LINE OF SEC 35 T32 R25, 620.5 FT S OF W 1/4 COR THEREOF (A SSD BRG OF W LINE OF SD SEC BEING N & S), TH S 55 DEG 12 MIN E 375.4 FT, TH S 68 DEG 17 MIN E 106 FT, TH N PRL/W SD W LINE 731 FT TO POB, TH N 24 DEG 21 MIN E 105.6 FT TO S LINE OF T H NO 10 & THERE TERM; LINE "A" IS DESC AS FOL: COM AT INTER OF W LINE OF SD SEC 35 WITH SLY R/W LINE OF T H NO 10, TH N 65 DEG 24 MIN 49 SEC W ALG SD R/W LINE 20.01 FT, TH S 6 DEG 54 MIN 28 SEC W 111.12 FT, TH SLY ALG A TAN CUR CONC TO E, HAV A RAD OF 240.84 FT & A CEN ANG OF 23 DEG 27 MIN 24 SEC, 98.60 FT, TH S 16 DEG 32 MIN 56 SEC E, TAN TO SD CUR, 50 FT, TH SLY ALG A TAN CUR CONC TO W, HAV A RAD OF 225.15 FT & A CEN ANG OF 46 DEG 43 MIN 12 SEC, 183.59 FT, TH S 30 DEG 10 MIN 16 SEC W 32.76 FT, TH SLY ALG A NON TAN CUR, CONC TO NE, HAV A CHORD BRG S 75 DEG 21 MIN 01 SEC E, A RAD OF 513.97 FT & A CEN ANG OF 31 DEG 02 MIN 34 SEC, 278.47 FT, TH N 89 DEG 07 MIN 42 SEC E, TAN TO SD CUR, 97.20 FT TO POB, TH N 89 DEG 07 MIN 42 SEC E 284.80 FT, TH ELY ALG A TAN CUR CONC TO S, HAV A RAD OF 423.34 FT & A CEN ANG OF 20 DEG 05 MIN 34 SEC, 148.46 FT, TH N 70 DEG 46 MIN 44 SEC W 226.22 FT TO NWLY LINE OF TUNGSTEN ST & THERE TERM; SUBJ TO EASE OF REC

4" HDPE SDR 17 sewer line Directional Bored.

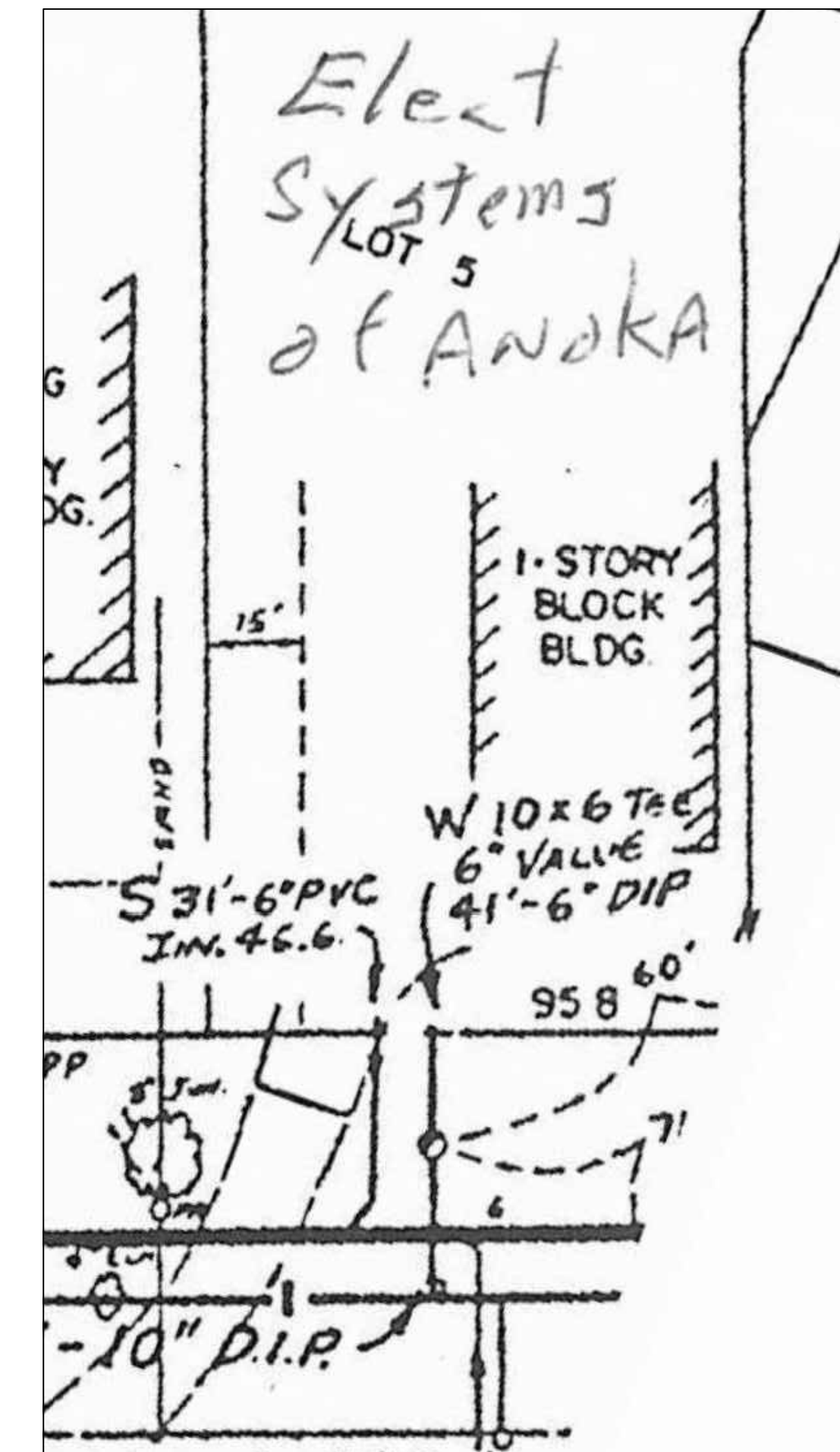
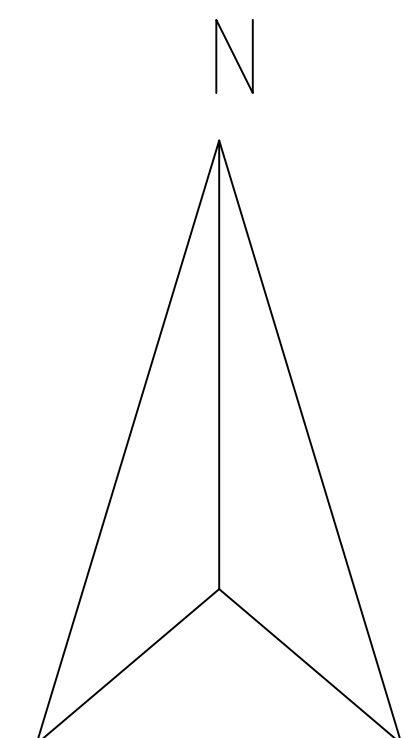
Minimum slope of 1/4" / foot.
All connections Sch 40 PVC
Maximum 90' between CO

1 **Site Plan**
C1 Scale: 1"=15'

Sewer Sub 31'-6" from W property line for INV=846.6



Polyethylene pressure pipe and fitting shall be manufactured with compounds conforming to ASTM D 3350 and shall conform to ASTM D3035 and AWWA C-901 (for 0.75" to 3" diameters)



Project Title
Sewer & Water Hookup

Address
Electric Systems of Anoka
6314 Hwy 10 W
Anoka, MN
Contact
Terry Lehn
Phone
763-421-6846



Commission Number 18-029 Date 04/20/20
Drawn KB Checked WB
Becklin & Whitney Consulting Engineers, Inc.
139 1st Ave. E, Suite 100
P.O. Box 471
Cambridge, MN 55008
Phone: (763) 689-5631
Fax: (763) 552-5631

I HEREBY CERTIFY THAT THIS PLAN, SPECIFICATION, OR REPORT WAS PREPARED BY ME OR UNDER MY DIRECT SUPERVISION AND THAT I AM A DULY REGISTERED PROFESSIONAL ENGINEER UNDER THE LAWS OF THE STATE OF MINNESOTA.

William A. Becklin
William A. Becklin, P.E.
DATE: May 26, 2020 LIC. NO. 18494

Sheet Name
SITE PLAN

Sheet
C1
Paper Size: 24x36