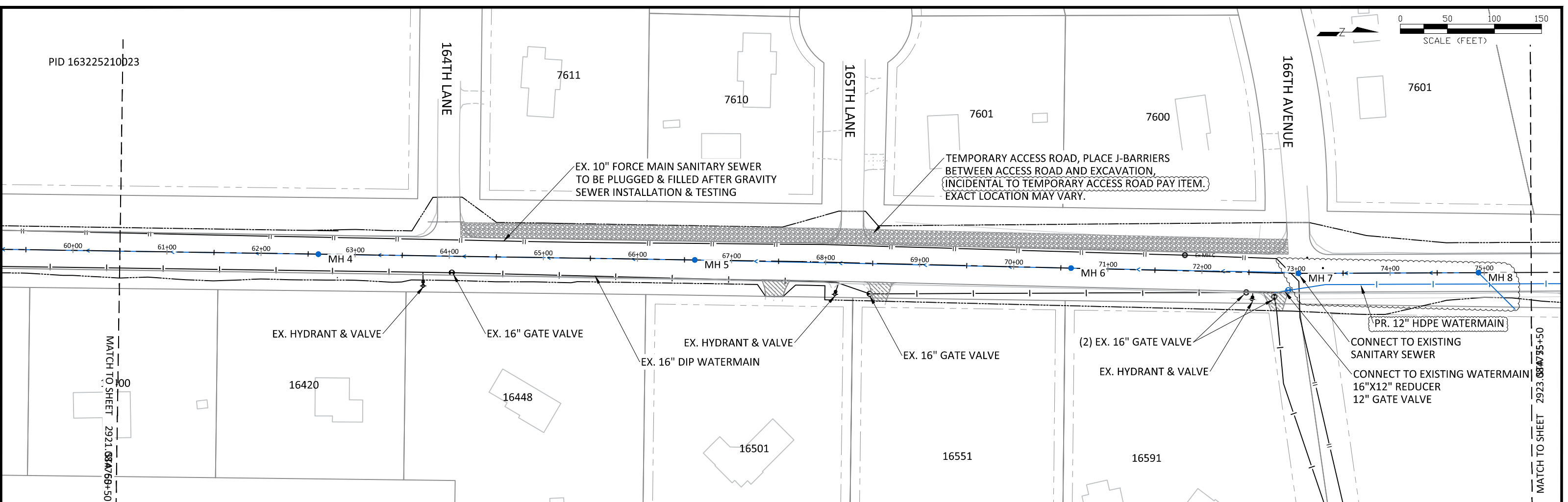


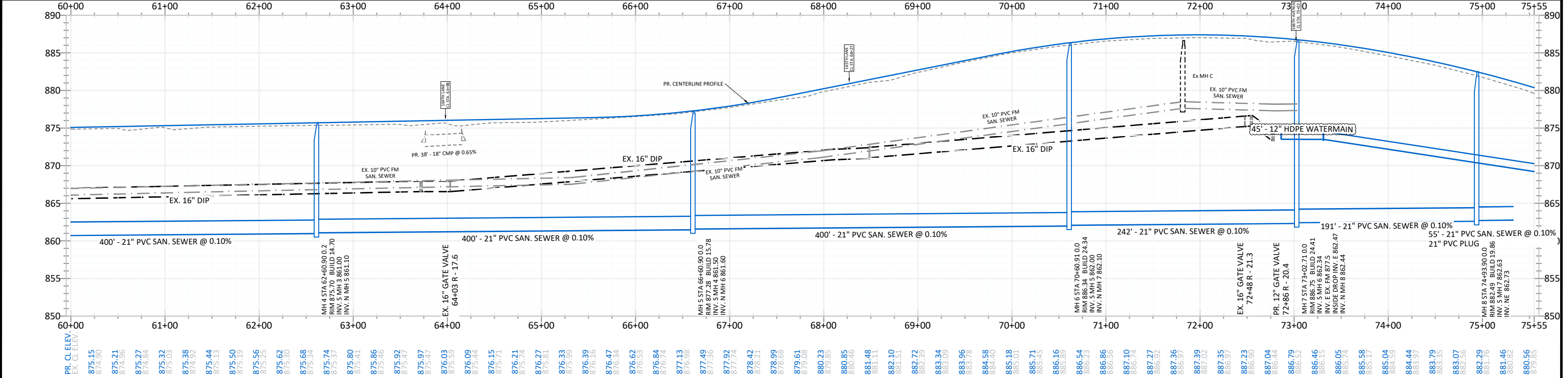
PID 163225210D23



LEGEND

--- CONSTRUCTION LIMIT	PR. BITUMINOUS PAVEMENT	--- STORM SEWER	--- SANITARY SEWER FORCEMAIN	○ HYDRANT
- - - EASEMENT - DRAINAGE & UTILITY	PR. DRIVE - BITUMINOUS	-DT-> STORM DRAIN TILE	○ CATCH BASIN	⊗ WM VALVE
- - - EASEMENT - ROADWAY	PR. DRIVE - CONCRETE	--- WATERMAIN	○ FLARED END SECTION	
- - - EASEMENT - PRIVATE UTILITY	PR. DRIVE - GRAVEL	--- SANITARY SEWER	○ SANITARY MANHOLE	
	PR. BITUMINOUS TRAIL			
	PR. CONCRETE WALK			
	PR. B618 CONCRETE C&G			

MH 7 NOTES:
 1. DIAMETER = 60 INCHES.
 2. EPOXY COAT INSIDE OF MANHOLE.
 3. INSIDE DROP BOWL SHALL BE OVERSIZED TO 15" SIZE BOWL AND SHALL INCLUDE BOWL HOOD.



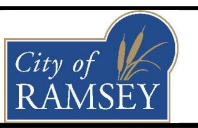
DATE	REVISION
6/3/20	UPDATE NOTES.
6/9/20	ALT B REPLACE 12" DIP WM WITH HDPE DIRECTIONAL DRILL WM.
7/21/20	ADJ. LOCATION MH 7 & EXISTING FORCEMAIN, ADD MH 8 & STUB NE.

I hereby certify that this plan, specification, or report was prepared by me or under my direct supervision and that I am a duly Licensed Professional Engineer under the laws of the State of Minnesota.

Joe Feriancek
 JOE FERIANCEK
 Date 5/18/20 Lic. No. 57095

DESIGNED BY: J JF
 DRAWN BY: J JF
 CHECKED BY: BRW

DATE: 5/18/20
 FILE: 20-01



CITY OF RAMSEY
 7550 SUNWOOD DRIVE
 RAMSEY, MN 55303
 (763) 427-1410 FAX (763) 433-9898

SANITARY SEWER & WATERMAIN
 STA. 60+00 TO 75+00
 S.A.P. 199-101-012

VARIOLITE STREET RECONSTRUCTION
 CITY PROJECT NO. 20-01
 CITY OF RAMSEY, MINNESOTA

SHEET 51R OF 94 SHEETS