



7550 Sunwood Drive NW • Ramsey, MN 55303

City Hall: 763.427.1410 • Fax: 763.427.5543

[www.cityoframsey.com](http://www.cityoframsey.com)

---

## What Do You Want in Our Backyard? Riverstone South Planned Residential Neighborhood

### BOWERS DRIVE CONNECTION SURVEY

The City is inviting you to participate in a survey regarding a proposed connection to Bowers Drive for public safety purposes.

**To complete the survey, visit our page at:**

[www.cityoframsey.com/development](http://www.cityoframsey.com/development) or [www.cityoframsey.com/769/Riverstone-South](http://www.cityoframsey.com/769/Riverstone-South)

*The City prefers that responses be submitted online, but a paper copy has been provided on the back of this letter for convenience.*

The City has been discussing a potential detached single-family development on a site east of Bowers Drive with Capstone Homes. Many of you may have participated in online webinars and open houses on this topic. The City has now received an official Application from Capstone Homes for the first of three (3) major steps. The project is still in concept stages of planning and review. The City has put up a resource page for the project at [www.cityoframsey.com/769/Riverstone-South](http://www.cityoframsey.com/769/Riverstone-South).

The City strives for a more collaborative public engagement process and involving residents much earlier in the decision making process. Please note that if the project moves forward, there will be additional opportunities for public comment, **including the official public hearing at a future date**. In the meantime, the City Council will be reviewing the attached concept plan at their meeting on Tuesday, September 8 at 7:00 p.m. Please check [www.cityoframsey.com/agendas](http://www.cityoframsey.com/agendas) for the most up to date information.

We value your input in this important neighborhood decision. Please let us know if you have any questions. We are available by phone at 763-433-9826 or by email at [planning@cityoframsey.com](mailto:planning@cityoframsey.com). You can also request hard copies of materials (costs may apply) through this contact as well.

Sincerely,

CITY OF RAMSEY

Tim Gladhill  
Deputy City Administrator



# **BOWERS DRIVE CONNECTION SURVEY**

## **Description**

The City of Ramsey is currently reviewing a proposal for a 242 lot detached single-family development east of Bowers Drive. Bowers Drive is the longest dead-end street in the City with a single access point. For purposes of public safety, the City desires to make a second connection to Bowers Drive through the new Riverstone South Development. The proposed layout of Riverstone South should create minimal traffic impacts on Bowers Drive.

**Respondents are encouraged to submit their responses online. This paper copy is provided as background and for those without access to computers and/or internet. <https://www.cityoframsey.com/FormCenter/Development-Updates-4/Bowers-Drive-Connection-to-Riverstone-So-99> (or find a friendlier link at [www.cityoframsey.com/development](http://www.cityoframsey.com/development)).**

## **Background and Disclaimer**

By filling out this form, you acknowledge that you have reviewed the materials available on the August 6 Planning Commission first. The City is recommending that a connection be made between Bowers Drive and the future Riverstone South development.

## **Fire Department Recommendation**

The proposed road that would connect Bowers Drive with the new Riverstone South Development is an important and vital roadway connection for Public Safety. The roadway connection will give Public Safety a second access point to the long Bowers Drive dead-end in the event of an emergency. If Bowers Drive were to be blocked for some reason, this road would allow Public Safety a second access to the Bowers Drive Neighborhood. The road needs to be built to the standards to support the weight of a Fire Vehicle and Equipment and not designed as a standard pedestrian trail. Bowers Drive is the longest dead-end cul-de-sac we have in the City. Bowers Drive does not have any fire hydrants to assist in emergencies.

## **Police Department Recommendation**

The Police Department is in support of the proposed roadway which would connect the existing cul-de-sac of Bowers Drive that has existed for a number of years to the new Riverstone South Development. Due to the nature and location of this proposed road, the Police Department believes the positives to public safety outweigh any possible negatives which could result from the change. We believe having a second access would increase our ability to quickly render aid to the Ramsey Residents who live on this existing street, who we serve and protect. As the specifics of this road are discussed further, the Police Department would request it be constructed for year-round access and not have breakaway barriers or gates.

## **Public Works Maintenance Recommendation**

The proposed road that would connect Bowers Drive with the new Riverstone South Development is an important and vital roadway connection for Public Safety. Public Works Staff and equipment are a vital part of every large-scale emergency response effort. Therefore, the Public Works Department recommends the access road be built to a minimum width of 24 feet with B Style Curb and designed to 9 Ton Specifications. This road needs to be designed to handle large emergency equipment, such as Fire Engines, Public Works Vehicles and Electrical Line Repair Vehicles. As also mentioned by Police and Fire, this is a long cul-de-sac road with only a single access point.

[Survey Continues on Next Page]

## Contact Information

The City is requesting that names and addresses are being captured as part of the public record. To ensure that those directly and most impacted by the policy decision are recorded and not unduly influenced by those not directly or most impacted by the decision, address verification is important.

Name	Email Address
<b>Address</b>	
<b>Phone Number</b>	

## Survey Question

For purposes of Public Safety Response, do you support a second access to Bowers Drive?

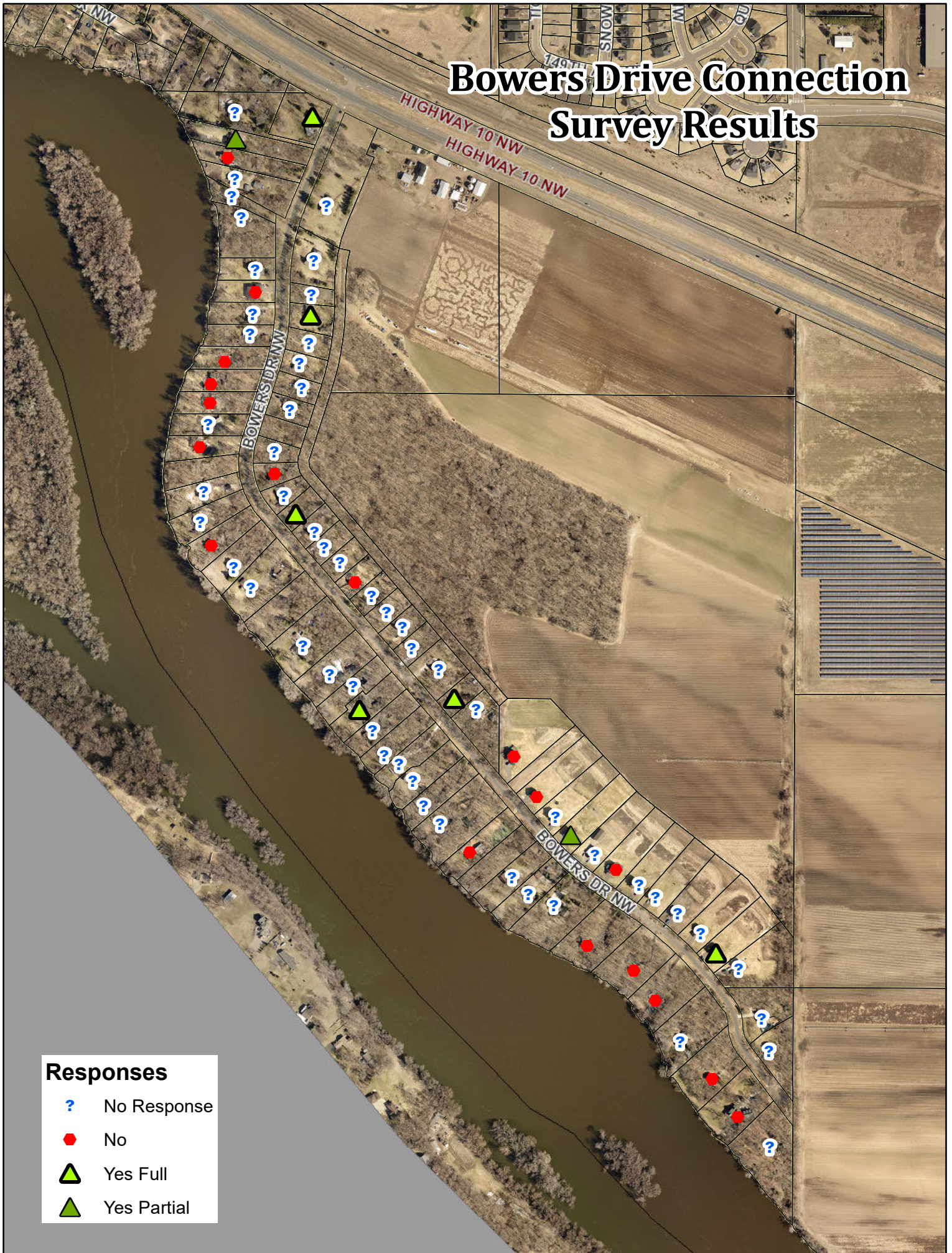
- Yes, I support a full public road connection
- Yes, but only if it is used by Public Safety (and Public Works Maintenance)
- No, I do not support a second connection to Bowers Drive
- Other (please describe below)

## Comments

## Disclaimer

For purposes of this survey, a non-response will be considered as a non-objection to the connection.

# Bowers Drive Connection Survey Results



Responses	
?	No Response
●	No
▲	Yes Full
▲	Yes Partial

Name	Address	For purposes of Public Safety Response, do you support a second access to Bowers Drive?	Please comment and explain your response above.
Jim Weidenbach	14230 Bowers Dr NW	No, I do not support a second connection to Bowers Drive	<p>Too much traffic on the road already.</p> <p>We do not want this connection because it would create more vehicle and pedestrian traffic on Bowers DR. One of the reasons we moved to Bowers DR 43 years ago was for the privacy.</p> <p>Years ago the topic of making Bowers DR part of a scenic river route or trail was brought up. There was a very large turnout of Bowers DR residents at the meeting that were against that proposal. It was decided that in the future when the Pierson property was to be developed a trail would be within the boundary of the new development and would not be at all connected to Bowers DR.</p>
Terry and Jane Luke	14250 Bowers DR NW	No, I do not support a second connection to Bowers Drive	I would expect that the City of Ramsey would keep their word on this matter and that it should be on record.
Michael Sutton	14310 Bowers Dr NW	No, I do not support a second connection to Bowers Drive	I see absolutely no value in the connection between Bowers Drive and the new development. The increased pedestrian and auto traffic if the connection would go forward would be unmanageable, potentially leading to assessments of the current residents to support street lighting along with other additions in the name of safety which we up until today have not needed. Also concerns of increased crime due to any additional connection allowing those who would commit crime alternate routes to escape.
Laurie Weber Schwarzenberger	14330 Bowers Dr NW	No, I do not support a second connection to Bowers Drive	<p>We have never had the need for a second access to Bowers Dr. We do not believe it is necessary. There will be other accesses to the new housing development for emergencies. We do not want additional traffic on Bowers Drive. The value of our house has already decreased because of new houses across our street. We do not want the values to drop further.</p> <p>Do not want a connection to Bowers Dr. as it will increase crime and traffic on a street that we enjoy living on. Also, Please ensure that there is no construction access via Bowers Dr for this proposed development.</p>
Michel Pierce	14330 Bowers Dr. NW	No, I do not support a second connection to Bowers Drive	Finally, Still looking for confirmation of a buffer in the southeastern portion of the proposed development between the newly constructed homes on Bowers and the proposed development.
			<p>I don't see the benefit or the actual need case, nor any data or history justifying the change. If the potential issue is a tree falling across the road, the city could instead proactively trim trees. As the structure of Bowers Drive is not on the table, it would seem to be of minimal benefit to have a 24 foot wide road with curb and gutter as the public works department is proposing rather than a wide trail, as the rest of the road does not have this structure either. If a road were required, a formal barrier would be important to restrict access and would be minimal hindrance to public safety. Perhaps a better investment would be fire hydrants.</p> <p>My primary concern is that the road would draw additional vehicle traffic from new development residents looking for an alternate route to highway 10. Bowers drive already has a large number of residents who exercise, walk, &amp; and take pets along Bowers Drive. Additional auto traffic would pose a significant danger to residents, outweighing any potential safety benefits from a second access.</p> <p>Additionally, extra walkers from the new development looking to complete a loop between the new development and Bowers Drive would add to the number of pedestrians, bikes or dogs along the road, further exacerbating the new hazard created by the proposed new access road.</p> <p>Finally, I am concerned this is just step one of a larger plan by city developers to change Bowers drive road, widening the access, adding curb &amp; gutter, etc. which would change the character of the neighborhood and negatively impact the current lot structure.</p> <p>If public safety is truly the concern of the city- improving or revising entrance and exit access to Bowers Drive should be the first focus- the current access to/from the neighborhood from Highway 10 is extremely dangerous- not enough distance to accelerate or decelerate, as well hazard of crossing the highway. This hazard would get worse with additional traffic from the new development using the access road as a short cut up Bowers Drive onto Highway 10.</p>
Bridget George	14350 Bowers Drive NW	No, I do not support a second connection to Bowers Drive	
Michael Manning	14365 Bowers Dr NW	No, I do not support a second connection to Bowers Drive	
Jamey McPheeters	14420 Bowers Dr NW	No, I do not support a second connection to Bowers Drive	
Kelly Hudick	14420 Bowers Drive NW	No, I do not support a second connection to Bowers Drive	
			<p>Ours is one of the properties directly adjacent to this proposed road. We are opposed to a second access to Bowers Drive.</p> <p>First off, we were not told of this when we purchased our property and are greatly disappointed by the finger pointing and lack of transparency in addressing this issue.</p> <p>Second, we are concerned about lack of safety to our property directly. Since ours would become a corner lot, we would have an entire side of our house exposed to a new roadway that connects to a neighborhood with 250 new homes and an open invitation for possible criminal activity. We are concerned for the safety of our home and ourselves.</p> <p>Another issue to be addressed would be the change in value of our property and any devaluation because of this new said roadway. Will we be compensated, and how, for any losses incurred?</p> <p>The road overall cannot handle more traffic, be it pedestrian or vehicle. Bowers Drive is an active street and adding any traffic poses more of a safety issue to us and our neighbors.</p> <p>Will there be street lights along this new roadway that will be glaring into our bedroom windows? If you build a full roadway with curbs, does that mean curbs for Bowers Drive? Where does this end? It seems you're creating a means for more problems and a never ending cycle. Disappointing to say the least.</p> <p>We've got a longer list of rising concerns that we cannot wait to voice and look forward to the opportunity to be heard.</p>
Paige Bentley	14435 Bowers Dr NW	No, I do not support a second connection to Bowers Drive	
			<p>I feel there is no real need, as in the past 80+ years no issues have happened that has allowed for no access</p> <p>the additional road does not improve the issues beyond the connection so does not offer the correct solution if we are looking to improve safety, I am concerned with increased foot pedestrian traffic on bowers drive as there is no side walk and no lighting down the road as is already popular with residents.</p> <p>reduced security is also a concern as additional exits will exist for criminal a number of independent studies have proven this in Minnesota. i am also concerned that the city and developer have not been transparent of what the use of the out lot has been for, in the initial planning phase (12 new homes) or when i purchased my house.</p>
James Wadley	14447 Bowers Dr NW	No, I do not support a second connection to Bowers Drive	
Carol Larson	14480 Bowers Dr NW	No, I do not support a second connection to Bowers Drive	See attached letter.
NICOLE JOHNSTON	14560 BOWERS Dr NW	No, I do not support a second connection to Bowers Drive	I do NOT want the extra traffic on the road, which leads to crime on the road. We did not move to the neighborhood to have additional traffic and issues. We moved here to have a quite DEAD END STREET!
Joshua J Fuhreck	14573 Bowers Dr NW	No, I do not support a second connection to Bowers Drive	
Katherine Woods	14610 Bowers Dr NW	No, I do not support a second connection to Bowers Drive	
Sam Sjostrom	14623 Bowers Dr Nw	No, I do not support a second connection to Bowers Drive	
Shelli Sjostrom	14623 Bowers Dr NW	No, I do not support a second connection to Bowers Drive	
Steven Perkins	14650 Bowers DR NW	No, I do not support a second connection to Bowers Drive	Bowers DR NW is already a very busy street for both pedestrians and vehicles. There are no sidewalks and the current flow of traffic already presents a huge danger to residents walking, etc. Connecting Bowers DR to the new development by road and/or walking trail will increase traffic and create a more dangerous situation for people on feet and bikes.

Ron Herst	14670 Bowers Dr. NW	No, I do not support a second connection to Bowers Drive	We have lived on Bowers Drive for 30 years and have been perfectly happy with the level of "Safety" that we've had. We are strongly opposed to the proposal to have a second access to Bowers Drive from Riverstone South. In the 30 years that we've lived here, the road has been perfectly adequate from a safety perspective. The very last thing that we want is any additional access to this road. We actually believe that our road is safer from crime in that it is a "dead end" and there is no other way in or out. Why should residents of 242 homes have access to Bowers Drive??? WE DONT WANT IT !!! We retired from farming & chose this house because of the lack of traffic. If the City ignores my opinion then put in posts that can be dropped by remote control. They use in Switzerland - it gets cold there too! I also don't like the density.
Katherine Prokosch	14700 Bowers Dr NW	No, I do not support a second connection to Bowers Drive	
Ralph R Nissen	14710 Bowers Dr NW	No, I do not support a second connection to Bowers Drive	
			<ul style="list-style-type: none"> <li>* Concerns that the 2nd access from neighboring high density low income housing will possibly reduce our property values on Bowers Dr.</li> <li>* Concerns this new 2nd access will result in future street lighting, road widening, sidewalks and fire hydrants etc on Bowers Dr.</li> <li>* Concerns of safety with increased foot/bicycle traffic on Bowers Dr.</li> </ul>
John Fluegel	14740 Bowers Dr NW	No, I do not support a second connection to Bowers Drive	* Overall concerns regarding the dramatic increase in high density housing in Ramsey...we moved to Ramsey from Mpls 40 years ago to live in a peaceful and quiet neighborhood.
John Morris	14820 Bowers Dr	No, I do not support a second connection to Bowers Drive	Both John and I feel that to maintain the privacy and value of our neighborhood this access should not be allowed. There has never been any hard numbers put to incidents on our street that warrant the expenditure by the city or the change to our neighborhood. The new neighborhood is not being modeled after ours so therefore we feel it should be kept separate.
Gretchen Morris	14820 Bowers Dr. NW	No, I do not support a second connection to Bowers Drive	Both John and I feel that to maintain the privacy and value of our neighborhood this access should not be allowed. There has never been any hard numbers put to incidents on our street that warrant the expenditure by the city or the change to our neighborhood. The new neighborhood is not being modeled after ours so therefore we feel it should be kept separate.
Tony Durkin	14409 Bowers Dr NW	Yes, but only if it is used by Public Safety (and Public Works Maintenance)	I support public safety and a fire hydrant on the street, I do not support streetlights. My concern is that if a full access road is constructed that it will lead to more traffic which will lead to more wear and tear on the road which will lead to the road re-being redone which will include gutters and streetlights which will lead to a special assessment to my property taxes. I would like to see the signs of emergency vehicles only added to the access road.
Richard Sandeen	14826 Bowers Dr NW	Yes, but only if it is used by Public Safety (and Public Works Maintenance)	Perhaps a little off topic but I would like to see the road connection between Bowers and Riverdale Dr. be moved another 30 or 40 feet to the South locating it completely away from the end of my driveway.
Richard	14826 Bowers Dr NW	Yes, but only if it is used by Public Safety (and Public Works Maintenance)	
Katie Jensen	14331 Bowers Dr NW	Yes, I support a full public road connection	
Stephen J Nash	14500 Bowers Dr NW	Yes, I support a full public road connection	First, we need a second access for Bowers Drive. Second, I believe that the access in question should be a public road which will help disperse traffic on Bowers Dr. Tim Gladhill, I received your letter asking for input regarding the Capstone project. My major question is safety for Bowers Drive. Our road has a lot of curves and limited visibility when leaving many driveways. My hope was that there would be another entry/exit from Bowers to the east. That would decrease traffic as there would be two ways to enter or exit Bowers. In looking at your concept plan I see a new trail and what appears to be a trail and emergency vehicle road with gate. That would only increase foot traffic but not help the traffic we experience. I have heard there is second option being considered with the east trail/limited vehicle plan to allow full car traffic. I would not be in favor of the version that appears in your letter. I would consider Bowers far more safe with two real entry/exits than the limited emergency option. I am not concerned about the very rare case where emergency vehicles need an additional entry vs the traffic we have every day.
Bert Horton	14510 Bowers Dr NW	Yes, I support a full public road connection	There should be trees planted on either side of this road. Those residents were not told by builders that there would be a road. They should plant spruce to provide year round privacy. Hopefully the first tier of new home drivers will not cut thru on Bowers to get to Hwy 10.
Bryan Olson	14513 Bowers Drive NW	Yes, I support a full public road connection	
John LeTourneau	14607 NW Bowers Dr NW	Yes, I support a full public road connection	
Gene. Waldowski	14743 Bowers Dr Nw	Yes, I support a full public road connection	
Luther Olson	14840 Bowers Dr NW	Yes, I support a full public road connection	

**From:** [REDACTED]  
**To:** [Ramsey Planning](#)  
**Subject:** Bowers Drive Connection Survey  
**Date:** Tuesday, August 18, 2020 4:42:53 PM

---

Tim Gladhill, I received your letter asking for input regarding the Capstone project. My major question is safety for Bowers Drive. Our road has a lot of curves and limited visibility when leaving many driveways. My hope was that there would be another entry/exit from Bowers to the east. That would decrease traffic as there would be two ways to enter or exit Bowers. In looking at your concept plan I see a new trail and what appears to be a trail and emergency vehicle road with gate. That would only increase foot traffic but not help the traffic we experience. I have heard there is second option being considered with the east trail/limited vehicle plan to allow full car traffic.

I would not be in favor of the version that appears in your letter. I would consider Bowers far more safe with two real entry/exits than the limited emergency option. I am not concerned about the very rare case where emergency vehicles need an additional entry vs the traffic we have every day.

Thanks, Bert Horton  
14510 Bowers Drive NW  
Ramsey, MN., 55303

## Contact Information

The City is requesting that names and addresses are being captured as part of the public record. To ensure that those directly and most impacted by the policy decision are recorded and not unduly influenced by those not directly or most impacted by the decision, address verification is important.

Name	Katherine Prokosch	Email Address	[REDACTED]
Address			
14700 Bowers Dr N.W			
Phone Number			
[REDACTED]			

## Survey Question

For purposes of Public Safety Response, do you support a second access to Bowers Drive?

- Yes, I support a full public road connection
- Yes, but only if it is used by Public Safety (and Public Works Maintenance)
- ~~Yes~~, I do not support a second connection to Bowers Drive
- Other (please describe below)

this is a drable negative statement

## Comments

We Retired from farming & chose this house because of the lack of traffic.  
If the city ignores my opinion then put in posts that can be dropped by remote control. Then use in Switzerland - it gets cold there too!

## Disclaimer

I also don't like the density. too!

For purposes of this survey, a non-response will be considered as a non-objection to the connection.

# Print

## Bowers Drive Connection to Riverstone South - Submission #2149

Date Submitted: 8/13/2020

### Riverstone South Background

[Riverstone South Background](#)

By filling out this form, you acknowledge that you have reviewed the materials on this link first. The City of Ramsey is recommending that a connection be made between Bowers Drive and the future Riverstone South Development.

### Fire Department Recommendation

The proposed road that would connect Bowers Drive with the new Riverstone South Development is an important and vital roadway connection for Public Safety. The roadway connection will give Public Safety a second access point to the long Bowers Drive dead-end in the event of an emergency. If Bowers Drive were to be blocked for some reason, this road would allow Public Safety a second access to the Bowers Drive Neighborhood. The road needs to be built to the standards to support the weight of a Fire Vehicle and Equipment and not designed as a standard pedestrian trail. Bowers Drive is the longest dead-end cul-de-sac we have in the City. Bowers Drive does not have any fire hydrants to assist in emergencies.

### Police Department Recommendation

The Police Department is in support of the proposed roadway which would connect the existing cul-de-sac of Bowers Drive that has existed for a number of years to the new Riverstone South Development. Due to the nature and location of this proposed road, the Police Department believes the positives to public safety outweigh any possible negatives which could result from the change. We believe having a second access would increase our ability to quickly render aid to the Ramsey Residents who live on this existing street, who we serve and protect. As the specifics of this road are discussed further, the Police Department would request it be constructed for year-round access and not have breakaway barriers or gates.

### Public Works Maintenance Recommendation

The proposed road that would connect Bowers Drive with the new Riverstone South Development is an important and vital roadway connection for Public Safety. Public Works Staff and equipment are a vital part of every large-scale emergency response effort. Therefore, the Public Works Department recommends the access road be built to a minimum width of 24 feet with B Style Curb and designed to 9 Ton Specifications. This road needs to be designed to handle large emergency equipment, such as Fire Engines, Public Works Vehicles and Electrical Line Repair Vehicles. As also mentioned by Police and Fire, this is a long cul-de-sac road with only a single access point.

I acknowledge that I have read the information above before responding to this survey.\*



Yes

### Purpose of Contact Information

The City is requesting that names and addresses are being captured as part of the public record. To ensure that those directly and most impacted by the policy decision are recorded and not unduly influenced by those not directly or most impacted by the decision, address verification is important.

Name\*

Bridget George

Email Address

[REDACTED]

Address\*

14350 Bowers Drive NW

City

Ramsey

State

MN

Zip Code

55303

**Phone Number**

**For purposes of Public Safety Response, do you support a second access to Bowers Drive?\***

- Yes, I support a full public road connection
- Yes, but only if it is used by Public Safety (and Public Works Maintenance)
- No, I do not support a second connection to Bowers Drive
- Other (please describe below)

**Disclaimer**

For purposes of this survey, a non-response will be considered as a non-objection to the connection.

**Please comment and explain your response above.**

I don't see the benefit or the actual need case, nor any data or history justifying the change. If the potential issue is a tree falling across the road, the city could instead proactively trim trees. As the structure of Bowers Drive is not on the table, it would seem to be of minimal benefit to have a 24 foot wide road with curb and gutter as the public works department is proposing rather than a wide trail, as the rest of the road does not have this structure either. If a road were required, a formal barrier would be important to restrict access and would be minimal hindrance to public safety. Perhaps a better investment would be fire hydrants. My primary concern is that the road would draw additional vehicle traffic from new development residents looking for an alternate route to highway 10. Bowers drive already has a large number of residents who exercise, walk, & and take pets along Bowers Drive. Additional auto traffic would pose a significant danger to residents, outweighing any potential safety benefits from a second access. Additionally, extra walkers from the new development looking to complete a loop between the new development and Bowers Drive would add to the number of pedestrians, bikes or dogs along the road, further exacerbating the new hazard created by the proposed new access road. Finally, I am concerned this is just step one of a larger plan by city developers to change Bowers drive road, widening the access, adding curb & gutter, etc. which would change the character of the neighborhood and negatively impact the current lot structure. If public safety is truly the concern of the city- improving or revising entrance and exit access to Bowers Drive should be the first focus- the current access to/from the neighborhood from Highway 10 is extremely dangerous- not enough distance to accelerate or decelerate, as well hazard of crossing the highway. This hazard would get worse with additional traffic from the new development using the access road as a short cut up Bowers Drive onto Highway 10.

# Print

## Bowers Drive Connection to Riverstone South - Submission #2150

Date Submitted: 8/13/2020

### Riverstone South Background

[Riverstone South Background](#)

By filling out this form, you acknowledge that you have reviewed the materials on this link first. The City of Ramsey is recommending that a connection be made between Bowers Drive and the future Riverstone South Development.

### Fire Department Recommendation

The proposed road that would connect Bowers Drive with the new Riverstone South Development is an important and vital roadway connection for Public Safety. The roadway connection will give Public Safety a second access point to the long Bowers Drive dead-end in the event of an emergency. If Bowers Drive were to be blocked for some reason, this road would allow Public Safety a second access to the Bowers Drive Neighborhood. The road needs to be built to the standards to support the weight of a Fire Vehicle and Equipment and not designed as a standard pedestrian trail. Bowers Drive is the longest dead-end cul-de-sac we have in the City. Bowers Drive does not have any fire hydrants to assist in emergencies.

### Police Department Recommendation

The Police Department is in support of the proposed roadway which would connect the existing cul-de-sac of Bowers Drive that has existed for a number of years to the new Riverstone South Development. Due to the nature and location of this proposed road, the Police Department believes the positives to public safety outweigh any possible negatives which could result from the change. We believe having a second access would increase our ability to quickly render aid to the Ramsey Residents who live on this existing street, who we serve and protect. As the specifics of this road are discussed further, the Police Department would request it be constructed for year-round access and not have breakaway barriers or gates.

### Public Works Maintenance Recommendation

The proposed road that would connect Bowers Drive with the new Riverstone South Development is an important and vital roadway connection for Public Safety. Public Works Staff and equipment are a vital part of every large-scale emergency response effort. Therefore, the Public Works Department recommends the access road be built to a minimum width of 24 feet with B Style Curb and designed to 9 Ton Specifications. This road needs to be designed to handle large emergency equipment, such as Fire Engines, Public Works Vehicles and Electrical Line Repair Vehicles. As also mentioned by Police and Fire, this is a long cul-de-sac road with only a single access point.

I acknowledge that I have read the information above before responding to this survey.\*



Yes

### Purpose of Contact Information

The City is requesting that names and addresses are being captured as part of the public record. To ensure that those directly and most impacted by the policy decision are recorded and not unduly influenced by those not directly or most impacted by the decision, address verification is important.

Name\*

James Wadey

Email Address

[REDACTED]

Address\*

14447 Bowers Dr NW

City

Ramsey

State

MN

Zip Code

55303

**Phone Number**

**For purposes of Public Safety Response, do you support a second access to Bowers Drive?\***

- Yes, I support a full public road connection
- Yes, but only if it is used by Public Safety (and Public Works Maintenance)
- No, I do not support a second connection to Bowers Drive
- Other (please describe below)

**Disclaimer**

For purposes of this survey, a non-response will be considered as a non-objection to the connection.

**Please comment and explain your response above.**

I feel there is no real need, as in the past 80+ years no issues have happened that has allowed for no access the additional road does not improve the issues beyond the connection so does not offer the correct solution if we are looking to improve safety, I am concerned with increased foot pedestrian traffic on bowers drive as there is no side walk and no lighting down the road as is already popular with residents. reduced security is also a concern as additional exits will exist for criminal a number of independent studies have proven this in Minnesota. i am also concerned that the city and developer have not been transparent of what the use of the out lot has been for, in the initial planning phase (12 new homes) or when i purchased my house.

# Print

## Bowers Drive Connection to Riverstone South - Submission #2151

Date Submitted: 8/13/2020

### Riverstone South Background

[Riverstone South Background](#)

By filling out this form, you acknowledge that you have reviewed the materials on this link first. The City of Ramsey is recommending that a connection be made between Bowers Drive and the future Riverstone South Development.

### Fire Department Recommendation

The proposed road that would connect Bowers Drive with the new Riverstone South Development is an important and vital roadway connection for Public Safety. The roadway connection will give Public Safety a second access point to the long Bowers Drive dead-end in the event of an emergency. If Bowers Drive were to be blocked for some reason, this road would allow Public Safety a second access to the Bowers Drive Neighborhood. The road needs to be built to the standards to support the weight of a Fire Vehicle and Equipment and not designed as a standard pedestrian trail. Bowers Drive is the longest dead-end cul-de-sac we have in the City. Bowers Drive does not have any fire hydrants to assist in emergencies.

### Police Department Recommendation

The Police Department is in support of the proposed roadway which would connect the existing cul-de-sac of Bowers Drive that has existed for a number of years to the new Riverstone South Development. Due to the nature and location of this proposed road, the Police Department believes the positives to public safety outweigh any possible negatives which could result from the change. We believe having a second access would increase our ability to quickly render aid to the Ramsey Residents who live on this existing street, who we serve and protect. As the specifics of this road are discussed further, the Police Department would request it be constructed for year-round access and not have breakaway barriers or gates.

### Public Works Maintenance Recommendation

The proposed road that would connect Bowers Drive with the new Riverstone South Development is an important and vital roadway connection for Public Safety. Public Works Staff and equipment are a vital part of every large-scale emergency response effort. Therefore, the Public Works Department recommends the access road be built to a minimum width of 24 feet with B Style Curb and designed to 9 Ton Specifications. This road needs to be designed to handle large emergency equipment, such as Fire Engines, Public Works Vehicles and Electrical Line Repair Vehicles. As also mentioned by Police and Fire, this is a long cul-de-sac road with only a single access point.

I acknowledge that I have read the information above before responding to this survey.\*



Yes

### Purpose of Contact Information

The City is requesting that names and addresses are being captured as part of the public record. To ensure that those directly and most impacted by the policy decision are recorded and not unduly influenced by those not directly or most impacted by the decision, address verification is important.

Name\*

Laurie Weber Schwarzenberger

Email Address

[REDACTED]

Address\*

14330 Bowers Dr

City

Anoka

State

Mn

Zip Code

55303

**Phone Number**

**For purposes of Public Safety Response, do you support a second access to Bowers Drive?\***

- Yes, I support a full public road connection
- Yes, but only if it is used by Public Safety (and Public Works Maintenance)
- No, I do not support a second connection to Bowers Drive
- Other (please describe below)

**Disclaimer**

For purposes of this survey, a non-response will be considered as a non-objection to the connection.

**Please comment and explain your response above.**

We have never had the need for a second access to Bowers Dr. We do not believe it is necessary. There will be other accesses to the new housing development for emergencies. We do not want additional traffic on Bowers Drive. The value of our house has already decreased because of new houses across our street..We do not want the values to drop further.

# Print

## Bowers Drive Connection to Riverstone South - Submission #2152

Date Submitted: 8/13/2020

### Riverstone South Background

[Riverstone South Background](#)

By filling out this form, you acknowledge that you have reviewed the materials on this link first. The City of Ramsey is recommending that a connection be made between Bowers Drive and the future Riverstone South Development.

### Fire Department Recommendation

The proposed road that would connect Bowers Drive with the new Riverstone South Development is an important and vital roadway connection for Public Safety. The roadway connection will give Public Safety a second access point to the long Bowers Drive dead-end in the event of an emergency. If Bowers Drive were to be blocked for some reason, this road would allow Public Safety a second access to the Bowers Drive Neighborhood. The road needs to be built to the standards to support the weight of a Fire Vehicle and Equipment and not designed as a standard pedestrian trail. Bowers Drive is the longest dead-end cul-de-sac we have in the City. Bowers Drive does not have any fire hydrants to assist in emergencies.

### Police Department Recommendation

The Police Department is in support of the proposed roadway which would connect the existing cul-de-sac of Bowers Drive that has existed for a number of years to the new Riverstone South Development. Due to the nature and location of this proposed road, the Police Department believes the positives to public safety outweigh any possible negatives which could result from the change. We believe having a second access would increase our ability to quickly render aid to the Ramsey Residents who live on this existing street, who we serve and protect. As the specifics of this road are discussed further, the Police Department would request it be constructed for year-round access and not have breakaway barriers or gates.

### Public Works Maintenance Recommendation

The proposed road that would connect Bowers Drive with the new Riverstone South Development is an important and vital roadway connection for Public Safety. Public Works Staff and equipment are a vital part of every large-scale emergency response effort. Therefore, the Public Works Department recommends the access road be built to a minimum width of 24 feet with B Style Curb and designed to 9 Ton Specifications. This road needs to be designed to handle large emergency equipment, such as Fire Engines, Public Works Vehicles and Electrical Line Repair Vehicles. As also mentioned by Police and Fire, this is a long cul-de-sac road with only a single access point.

I acknowledge that I have read the information above before responding to this survey.\*



Yes

### Purpose of Contact Information

The City is requesting that names and addresses are being captured as part of the public record. To ensure that those directly and most impacted by the policy decision are recorded and not unduly influenced by those not directly or most impacted by the decision, address verification is important.

Name\*

Paige Bentley

Email Address

[REDACTED]

Address\*

14435 Bowers Dr NW

City

Ramsey

State

Minnesota

Zip Code

55303

**Phone Number**

**For purposes of Public Safety Response, do you support a second access to Bowers Drive?\***

- Yes, I support a full public road connection
- Yes, but only if it is used by Public Safety (and Public Works Maintenance)
- No, I do not support a second connection to Bowers Drive
- Other (please describe below)

**Disclaimer**

For purposes of this survey, a non-response will be considered as a non-objection to the connection.

**Please comment and explain your response above.**

Ours is one of the properties directly adjacent to this proposed road. We are opposed to a second access to Bowers Drive. First off, we were not told of this when we purchased our property and are greatly disappointed by the finger pointing and lack of transparency in addressing this issue. Second, we are concerned about lack of safety to our property directly. Since ours would become a corner lot, we would have an entire side of our house exposed to a new roadway that connects to a neighborhood with 250 new homes and an open invitation for possible criminal activity. We are concerned for the safety of our home and ourselves. Another issue to be addressed would be the change in value of our property and any devaluation because of this new said roadway. Will we be compensated, and how, for any losses incurred? The road overall cannot handle more traffic, be it pedestrian or vehicle. Bowers Drive is an active street and adding any traffic poses more of a safety issue to us and our neighbors. Will there be street lights along this new roadway that will be glaring into our bedroom windows? If you build a full roadway with curbs, does that mean curbs for Bowers Drive? Where does this end? It seems you're creating a means for more problems and a never ending cycle. Disappointing to say the least. We've got a longer list of rising concerns that we cannot wait to voice and look forward to the opportunity to be heard.

# Print

## Bowers Drive Connection to Riverstone South - Submission #2153

Date Submitted: 8/14/2020

### Riverstone South Background

[Riverstone South Background](#)

By filling out this form, you acknowledge that you have reviewed the materials on this link first. The City of Ramsey is recommending that a connection be made between Bowers Drive and the future Riverstone South Development.

### Fire Department Recommendation

The proposed road that would connect Bowers Drive with the new Riverstone South Development is an important and vital roadway connection for Public Safety. The roadway connection will give Public Safety a second access point to the long Bowers Drive dead-end in the event of an emergency. If Bowers Drive were to be blocked for some reason, this road would allow Public Safety a second access to the Bowers Drive Neighborhood. The road needs to be built to the standards to support the weight of a Fire Vehicle and Equipment and not designed as a standard pedestrian trail. Bowers Drive is the longest dead-end cul-de-sac we have in the City. Bowers Drive does not have any fire hydrants to assist in emergencies.

### Police Department Recommendation

The Police Department is in support of the proposed roadway which would connect the existing cul-de-sac of Bowers Drive that has existed for a number of years to the new Riverstone South Development. Due to the nature and location of this proposed road, the Police Department believes the positives to public safety outweigh any possible negatives which could result from the change. We believe having a second access would increase our ability to quickly render aid to the Ramsey Residents who live on this existing street, who we serve and protect. As the specifics of this road are discussed further, the Police Department would request it be constructed for year-round access and not have breakaway barriers or gates.

### Public Works Maintenance Recommendation

The proposed road that would connect Bowers Drive with the new Riverstone South Development is an important and vital roadway connection for Public Safety. Public Works Staff and equipment are a vital part of every large-scale emergency response effort. Therefore, the Public Works Department recommends the access road be built to a minimum width of 24 feet with B Style Curb and designed to 9 Ton Specifications. This road needs to be designed to handle large emergency equipment, such as Fire Engines, Public Works Vehicles and Electrical Line Repair Vehicles. As also mentioned by Police and Fire, this is a long cul-de-sac road with only a single access point.

I acknowledge that I have read the information above before responding to this survey.\*



Yes

### Purpose of Contact Information

The City is requesting that names and addresses are being captured as part of the public record. To ensure that those directly and most impacted by the policy decision are recorded and not unduly influenced by those not directly or most impacted by the decision, address verification is important.

Name\*

Sam Sjostrom

Email Address

[REDACTED]

Address\*

14623 Bowers Dr Nw

City

Ramsey

State

MN

Zip Code

55303

**Phone Number**

**For purposes of Public Safety Response, do you support a second access to Bowers Drive?\***

Yes, I support a full public road connection

Yes, but only if it is used by Public Safety (and Public Works Maintenance)

No, I do not support a second connection to Bowers Drive

Other (please describe below)

**Disclaimer**

For purposes of this survey, a non-response will be considered as a non-objection to the connection.

**Please comment and explain your response above.**

# Print

## Bowers Drive Connection to Riverstone South - Submission #2154

Date Submitted: 8/14/2020

### Riverstone South Background

[Riverstone South Background](#)

By filling out this form, you acknowledge that you have reviewed the materials on this link first. The City of Ramsey is recommending that a connection be made between Bowers Drive and the future Riverstone South Development.

### Fire Department Recommendation

The proposed road that would connect Bowers Drive with the new Riverstone South Development is an important and vital roadway connection for Public Safety. The roadway connection will give Public Safety a second access point to the long Bowers Drive dead-end in the event of an emergency. If Bowers Drive were to be blocked for some reason, this road would allow Public Safety a second access to the Bowers Drive Neighborhood. The road needs to be built to the standards to support the weight of a Fire Vehicle and Equipment and not designed as a standard pedestrian trail. Bowers Drive is the longest dead-end cul-de-sac we have in the City. Bowers Drive does not have any fire hydrants to assist in emergencies.

### Police Department Recommendation

The Police Department is in support of the proposed roadway which would connect the existing cul-de-sac of Bowers Drive that has existed for a number of years to the new Riverstone South Development. Due to the nature and location of this proposed road, the Police Department believes the positives to public safety outweigh any possible negatives which could result from the change. We believe having a second access would increase our ability to quickly render aid to the Ramsey Residents who live on this existing street, who we serve and protect. As the specifics of this road are discussed further, the Police Department would request it be constructed for year-round access and not have breakaway barriers or gates.

### Public Works Maintenance Recommendation

The proposed road that would connect Bowers Drive with the new Riverstone South Development is an important and vital roadway connection for Public Safety. Public Works Staff and equipment are a vital part of every large-scale emergency response effort. Therefore, the Public Works Department recommends the access road be built to a minimum width of 24 feet with B Style Curb and designed to 9 Ton Specifications. This road needs to be designed to handle large emergency equipment, such as Fire Engines, Public Works Vehicles and Electrical Line Repair Vehicles. As also mentioned by Police and Fire, this is a long cul-de-sac road with only a single access point.

I acknowledge that I have read the information above before responding to this survey.\*



Yes

### Purpose of Contact Information

The City is requesting that names and addresses are being captured as part of the public record. To ensure that those directly and most impacted by the policy decision are recorded and not unduly influenced by those not directly or most impacted by the decision, address verification is important.

Name\*

Gene. Waldowski

Email Address

[REDACTED]

Address\*

14743 Bowers Dr Nw

City

Ramsey

State

Mn

Zip Code

55303

**Phone Number**

**For purposes of Public Safety Response, do you support a second access to Bowers Drive?\***

Yes, I support a full public road connection

Yes, but only if it is used by Public Safety (and Public Works Maintenance)

No, I do not support a second connection to Bowers Drive

Other (please describe below)

**Disclaimer**

For purposes of this survey, a non-response will be considered as a non-objection to the connection.

**Please comment and explain your response above.**

# Print

## Bowers Drive Connection to Riverstone South - Submission #2155

Date Submitted: 8/14/2020

### Riverstone South Background

[Riverstone South Background](#)

By filling out this form, you acknowledge that you have reviewed the materials on this link first. The City of Ramsey is recommending that a connection be made between Bowers Drive and the future Riverstone South Development.

### Fire Department Recommendation

The proposed road that would connect Bowers Drive with the new Riverstone South Development is an important and vital roadway connection for Public Safety. The roadway connection will give Public Safety a second access point to the long Bowers Drive dead-end in the event of an emergency. If Bowers Drive were to be blocked for some reason, this road would allow Public Safety a second access to the Bowers Drive Neighborhood. The road needs to be built to the standards to support the weight of a Fire Vehicle and Equipment and not designed as a standard pedestrian trail. Bowers Drive is the longest dead-end cul-de-sac we have in the City. Bowers Drive does not have any fire hydrants to assist in emergencies.

### Police Department Recommendation

The Police Department is in support of the proposed roadway which would connect the existing cul-de-sac of Bowers Drive that has existed for a number of years to the new Riverstone South Development. Due to the nature and location of this proposed road, the Police Department believes the positives to public safety outweigh any possible negatives which could result from the change. We believe having a second access would increase our ability to quickly render aid to the Ramsey Residents who live on this existing street, who we serve and protect. As the specifics of this road are discussed further, the Police Department would request it be constructed for year-round access and not have breakaway barriers or gates.

### Public Works Maintenance Recommendation

The proposed road that would connect Bowers Drive with the new Riverstone South Development is an important and vital roadway connection for Public Safety. Public Works Staff and equipment are a vital part of every large-scale emergency response effort. Therefore, the Public Works Department recommends the access road be built to a minimum width of 24 feet with B Style Curb and designed to 9 Ton Specifications. This road needs to be designed to handle large emergency equipment, such as Fire Engines, Public Works Vehicles and Electrical Line Repair Vehicles. As also mentioned by Police and Fire, this is a long cul-de-sac road with only a single access point.

I acknowledge that I have read the information above before responding to this survey.\*



Yes

### Purpose of Contact Information

The City is requesting that names and addresses are being captured as part of the public record. To ensure that those directly and most impacted by the policy decision are recorded and not unduly influenced by those not directly or most impacted by the decision, address verification is important.

Name\*

Shelli Sjostrom

Email Address

Address\*

14623 Bowers Dr NW

City

Ramsey

State

MN

Zip Code

55303

**Phone Number**

---

**For purposes of Public Safety Response, do you support a second access to Bowers Drive?\***

- Yes, I support a full public road connection
- Yes, but only if it is used by Public Safety (and Public Works Maintenance)
- No, I do not support a second connection to Bowers Drive
- Other (please describe below)

**Disclaimer**

For purposes of this survey, a non-response will be considered as a non-objection to the connection.

**Please comment and explain your response above.**

---

# Print

## Bowers Drive Connection to Riverstone South - Submission #2156

Date Submitted: 8/15/2020

### Riverstone South Background

[Riverstone South Background](#)

By filling out this form, you acknowledge that you have reviewed the materials on this link first. The City of Ramsey is recommending that a connection be made between Bowers Drive and the future Riverstone South Development.

### Fire Department Recommendation

The proposed road that would connect Bowers Drive with the new Riverstone South Development is an important and vital roadway connection for Public Safety. The roadway connection will give Public Safety a second access point to the long Bowers Drive dead-end in the event of an emergency. If Bowers Drive were to be blocked for some reason, this road would allow Public Safety a second access to the Bowers Drive Neighborhood. The road needs to be built to the standards to support the weight of a Fire Vehicle and Equipment and not designed as a standard pedestrian trail. Bowers Drive is the longest dead-end cul-de-sac we have in the City. Bowers Drive does not have any fire hydrants to assist in emergencies.

### Police Department Recommendation

The Police Department is in support of the proposed roadway which would connect the existing cul-de-sac of Bowers Drive that has existed for a number of years to the new Riverstone South Development. Due to the nature and location of this proposed road, the Police Department believes the positives to public safety outweigh any possible negatives which could result from the change. We believe having a second access would increase our ability to quickly render aid to the Ramsey Residents who live on this existing street, who we serve and protect. As the specifics of this road are discussed further, the Police Department would request it be constructed for year-round access and not have breakaway barriers or gates.

### Public Works Maintenance Recommendation

The proposed road that would connect Bowers Drive with the new Riverstone South Development is an important and vital roadway connection for Public Safety. Public Works Staff and equipment are a vital part of every large-scale emergency response effort. Therefore, the Public Works Department recommends the access road be built to a minimum width of 24 feet with B Style Curb and designed to 9 Ton Specifications. This road needs to be designed to handle large emergency equipment, such as Fire Engines, Public Works Vehicles and Electrical Line Repair Vehicles. As also mentioned by Police and Fire, this is a long cul-de-sac road with only a single access point.

I acknowledge that I have read the information above before responding to this survey.\*



Yes

### Purpose of Contact Information

The City is requesting that names and addresses are being captured as part of the public record. To ensure that those directly and most impacted by the policy decision are recorded and not unduly influenced by those not directly or most impacted by the decision, address verification is important.

Name\*

Richard Sandeen

Email Address

[REDACTED]

Address\*

14826 Bowers Dr NW

City

Ramsey

State

MN

Zip Code

55303

**Phone Number**

**For purposes of Public Safety Response, do you support a second access to Bowers Drive?\***

Yes, I support a full public road connection

Yes, but only if it is used by Public Safety (and Public Works Maintenance)

No, I do not support a second connection to Bowers Drive

Other (please describe below)

**Disclaimer**

For purposes of this survey, a non-response will be considered as a non-objection to the connection.

**Please comment and explain your response above.**

Perhaps a little off topic but I would like to see the road connection between Bowers and Riverdale Dr. be moved another 30 or 40 feet to the South locating it completely away from the end of my driveway.

# Print

## Bowers Drive Connection to Riverstone South - Submission #2158

Date Submitted: 8/15/2020

### Riverstone South Background

[Riverstone South Background](#)

By filling out this form, you acknowledge that you have reviewed the materials on this link first. The City of Ramsey is recommending that a connection be made between Bowers Drive and the future Riverstone South Development.

### Fire Department Recommendation

The proposed road that would connect Bowers Drive with the new Riverstone South Development is an important and vital roadway connection for Public Safety. The roadway connection will give Public Safety a second access point to the long Bowers Drive dead-end in the event of an emergency. If Bowers Drive were to be blocked for some reason, this road would allow Public Safety a second access to the Bowers Drive Neighborhood. The road needs to be built to the standards to support the weight of a Fire Vehicle and Equipment and not designed as a standard pedestrian trail. Bowers Drive is the longest dead-end cul-de-sac we have in the City. Bowers Drive does not have any fire hydrants to assist in emergencies.

### Police Department Recommendation

The Police Department is in support of the proposed roadway which would connect the existing cul-de-sac of Bowers Drive that has existed for a number of years to the new Riverstone South Development. Due to the nature and location of this proposed road, the Police Department believes the positives to public safety outweigh any possible negatives which could result from the change. We believe having a second access would increase our ability to quickly render aid to the Ramsey Residents who live on this existing street, who we serve and protect. As the specifics of this road are discussed further, the Police Department would request it be constructed for year-round access and not have breakaway barriers or gates.

### Public Works Maintenance Recommendation

The proposed road that would connect Bowers Drive with the new Riverstone South Development is an important and vital roadway connection for Public Safety. Public Works Staff and equipment are a vital part of every large-scale emergency response effort. Therefore, the Public Works Department recommends the access road be built to a minimum width of 24 feet with B Style Curb and designed to 9 Ton Specifications. This road needs to be designed to handle large emergency equipment, such as Fire Engines, Public Works Vehicles and Electrical Line Repair Vehicles. As also mentioned by Police and Fire, this is a long cul-de-sac road with only a single access point.

I acknowledge that I have read the information above before responding to this survey.\*



Yes

### Purpose of Contact Information

The City is requesting that names and addresses are being captured as part of the public record. To ensure that those directly and most impacted by the policy decision are recorded and not unduly influenced by those not directly or most impacted by the decision, address verification is important.

Name\*

Bryan Olson

Email Address

[REDACTED]

Address\*

14513 Bowers Drive

City

Ramsey

State

MN

Zip Code

55303

**Phone Number**

**For purposes of Public Safety Response, do you support a second access to Bowers Drive?\***



Yes, I support a full public road connection



Yes, but only if it is used by Public Safety (and Public Works Maintenance)



No, I do not support a second connection to Bowers Drive



Other (please describe below)

**Disclaimer**

For purposes of this survey, a non-response will be considered as a non-objection to the connection.

**Please comment and explain your response above.**

There should be trees planted on either side of this road. Those residents were not told by builders that there would be a road. They should plant spruce to provide year round privacy. Hopefully the first tier of new home drivers will not cut thru on Bowers to get to Hwy 10.

# Print

## Bowers Drive Connection to Riverstone South - Submission #2159

Date Submitted: 8/15/2020

### Riverstone South Background

[Riverstone South Background](#)

By filling out this form, you acknowledge that you have reviewed the materials on this link first. The City of Ramsey is recommending that a connection be made between Bowers Drive and the future Riverstone South Development.

### Fire Department Recommendation

The proposed road that would connect Bowers Drive with the new Riverstone South Development is an important and vital roadway connection for Public Safety. The roadway connection will give Public Safety a second access point to the long Bowers Drive dead-end in the event of an emergency. If Bowers Drive were to be blocked for some reason, this road would allow Public Safety a second access to the Bowers Drive Neighborhood. The road needs to be built to the standards to support the weight of a Fire Vehicle and Equipment and not designed as a standard pedestrian trail. Bowers Drive is the longest dead-end cul-de-sac we have in the City. Bowers Drive does not have any fire hydrants to assist in emergencies.

### Police Department Recommendation

The Police Department is in support of the proposed roadway which would connect the existing cul-de-sac of Bowers Drive that has existed for a number of years to the new Riverstone South Development. Due to the nature and location of this proposed road, the Police Department believes the positives to public safety outweigh any possible negatives which could result from the change. We believe having a second access would increase our ability to quickly render aid to the Ramsey Residents who live on this existing street, who we serve and protect. As the specifics of this road are discussed further, the Police Department would request it be constructed for year-round access and not have breakaway barriers or gates.

### Public Works Maintenance Recommendation

The proposed road that would connect Bowers Drive with the new Riverstone South Development is an important and vital roadway connection for Public Safety. Public Works Staff and equipment are a vital part of every large-scale emergency response effort. Therefore, the Public Works Department recommends the access road be built to a minimum width of 24 feet with B Style Curb and designed to 9 Ton Specifications. This road needs to be designed to handle large emergency equipment, such as Fire Engines, Public Works Vehicles and Electrical Line Repair Vehicles. As also mentioned by Police and Fire, this is a long cul-de-sac road with only a single access point.

I acknowledge that I have read the information above before responding to this survey.\*



Yes

### Purpose of Contact Information

The City is requesting that names and addresses are being captured as part of the public record. To ensure that those directly and most impacted by the policy decision are recorded and not unduly influenced by those not directly or most impacted by the decision, address verification is important.

Name\*

Email Address

Richard

Sandeen

Address\*

14826 Bowers Dr NW

City

State

Zip Code

Ramsey

MN

55303

**Phone Number**

**For purposes of Public Safety Response, do you support a second access to Bowers Drive?\***

Yes, I support a full public road connection

Yes, but only if it is used by Public Safety (and Public Works Maintenance)

No, I do not support a second connection to Bowers Drive

Other (please describe below)

**Disclaimer**

For purposes of this survey, a non-response will be considered as a non-objection to the connection.

**Please comment and explain your response above.**

# Print

## Bowers Drive Connection to Riverstone South - Submission #2160

Date Submitted: 8/15/2020

### Riverstone South Background

[Riverstone South Background](#)

By filling out this form, you acknowledge that you have reviewed the materials on this link first. The City of Ramsey is recommending that a connection be made between Bowers Drive and the future Riverstone South Development.

### Fire Department Recommendation

The proposed road that would connect Bowers Drive with the new Riverstone South Development is an important and vital roadway connection for Public Safety. The roadway connection will give Public Safety a second access point to the long Bowers Drive dead-end in the event of an emergency. If Bowers Drive were to be blocked for some reason, this road would allow Public Safety a second access to the Bowers Drive Neighborhood. The road needs to be built to the standards to support the weight of a Fire Vehicle and Equipment and not designed as a standard pedestrian trail. Bowers Drive is the longest dead-end cul-de-sac we have in the City. Bowers Drive does not have any fire hydrants to assist in emergencies.

### Police Department Recommendation

The Police Department is in support of the proposed roadway which would connect the existing cul-de-sac of Bowers Drive that has existed for a number of years to the new Riverstone South Development. Due to the nature and location of this proposed road, the Police Department believes the positives to public safety outweigh any possible negatives which could result from the change. We believe having a second access would increase our ability to quickly render aid to the Ramsey Residents who live on this existing street, who we serve and protect. As the specifics of this road are discussed further, the Police Department would request it be constructed for year-round access and not have breakaway barriers or gates.

### Public Works Maintenance Recommendation

The proposed road that would connect Bowers Drive with the new Riverstone South Development is an important and vital roadway connection for Public Safety. Public Works Staff and equipment are a vital part of every large-scale emergency response effort. Therefore, the Public Works Department recommends the access road be built to a minimum width of 24 feet with B Style Curb and designed to 9 Ton Specifications. This road needs to be designed to handle large emergency equipment, such as Fire Engines, Public Works Vehicles and Electrical Line Repair Vehicles. As also mentioned by Police and Fire, this is a long cul-de-sac road with only a single access point.

I acknowledge that I have read the information above before responding to this survey.\*



Yes

### Purpose of Contact Information

The City is requesting that names and addresses are being captured as part of the public record. To ensure that those directly and most impacted by the policy decision are recorded and not unduly influenced by those not directly or most impacted by the decision, address verification is important.

Name\*

John LeTourneau

Email Address



Address\*

14607 NW Bowers Drive

City

Ramsey

State

Minnesota

Zip Code

55303

**Phone Number**

**For purposes of Public Safety Response, do you support a second access to Bowers Drive?\***

Yes, I support a full public road connection

Yes, but only if it is used by Public Safety (and Public Works Maintenance)

No, I do not support a second connection to Bowers Drive

Other (please describe below)

**Disclaimer**

For purposes of this survey, a non-response will be considered as a non-objection to the connection.

**Please comment and explain your response above.**

# Print

## Bowers Drive Connection to Riverstone South - Submission #2161

Date Submitted: 8/16/2020

### Riverstone South Background

[Riverstone South Background](#)

By filling out this form, you acknowledge that you have reviewed the materials on this link first. The City of Ramsey is recommending that a connection be made between Bowers Drive and the future Riverstone South Development.

### Fire Department Recommendation

The proposed road that would connect Bowers Drive with the new Riverstone South Development is an important and vital roadway connection for Public Safety. The roadway connection will give Public Safety a second access point to the long Bowers Drive dead-end in the event of an emergency. If Bowers Drive were to be blocked for some reason, this road would allow Public Safety a second access to the Bowers Drive Neighborhood. The road needs to be built to the standards to support the weight of a Fire Vehicle and Equipment and not designed as a standard pedestrian trail. Bowers Drive is the longest dead-end cul-de-sac we have in the City. Bowers Drive does not have any fire hydrants to assist in emergencies.

### Police Department Recommendation

The Police Department is in support of the proposed roadway which would connect the existing cul-de-sac of Bowers Drive that has existed for a number of years to the new Riverstone South Development. Due to the nature and location of this proposed road, the Police Department believes the positives to public safety outweigh any possible negatives which could result from the change. We believe having a second access would increase our ability to quickly render aid to the Ramsey Residents who live on this existing street, who we serve and protect. As the specifics of this road are discussed further, the Police Department would request it be constructed for year-round access and not have breakaway barriers or gates.

### Public Works Maintenance Recommendation

The proposed road that would connect Bowers Drive with the new Riverstone South Development is an important and vital roadway connection for Public Safety. Public Works Staff and equipment are a vital part of every large-scale emergency response effort. Therefore, the Public Works Department recommends the access road be built to a minimum width of 24 feet with B Style Curb and designed to 9 Ton Specifications. This road needs to be designed to handle large emergency equipment, such as Fire Engines, Public Works Vehicles and Electrical Line Repair Vehicles. As also mentioned by Police and Fire, this is a long cul-de-sac road with only a single access point.

I acknowledge that I have read the information above before responding to this survey.\*



Yes

### Purpose of Contact Information

The City is requesting that names and addresses are being captured as part of the public record. To ensure that those directly and most impacted by the policy decision are recorded and not unduly influenced by those not directly or most impacted by the decision, address verification is important.

Name\*

Jim Weidenbach

Email Address

[REDACTED]

Address\*

14230 bowers drive nw, anoka mn 55303

City

ramsey

State

mn

Zip Code

55303

**Phone Number**

**For purposes of Public Safety Response, do you support a second access to Bowers Drive?\***

Yes, I support a full public road connection

Yes, but only if it is used by Public Safety (and Public Works Maintenance)

No, I do not support a second connection to Bowers Drive

Other (please describe below)

**Disclaimer**

For purposes of this survey, a non-response will be considered as a non-objection to the connection.

**Please comment and explain your response above.**

# Print

## Bowers Drive Connection to Riverstone South - Submission #2162

Date Submitted: 8/16/2020

### Riverstone South Background

[Riverstone South Background](#)

By filling out this form, you acknowledge that you have reviewed the materials on this link first. The City of Ramsey is recommending that a connection be made between Bowers Drive and the future Riverstone South Development.

### Fire Department Recommendation

The proposed road that would connect Bowers Drive with the new Riverstone South Development is an important and vital roadway connection for Public Safety. The roadway connection will give Public Safety a second access point to the long Bowers Drive dead-end in the event of an emergency. If Bowers Drive were to be blocked for some reason, this road would allow Public Safety a second access to the Bowers Drive Neighborhood. The road needs to be built to the standards to support the weight of a Fire Vehicle and Equipment and not designed as a standard pedestrian trail. Bowers Drive is the longest dead-end cul-de-sac we have in the City. Bowers Drive does not have any fire hydrants to assist in emergencies.

### Police Department Recommendation

The Police Department is in support of the proposed roadway which would connect the existing cul-de-sac of Bowers Drive that has existed for a number of years to the new Riverstone South Development. Due to the nature and location of this proposed road, the Police Department believes the positives to public safety outweigh any possible negatives which could result from the change. We believe having a second access would increase our ability to quickly render aid to the Ramsey Residents who live on this existing street, who we serve and protect. As the specifics of this road are discussed further, the Police Department would request it be constructed for year-round access and not have breakaway barriers or gates.

### Public Works Maintenance Recommendation

The proposed road that would connect Bowers Drive with the new Riverstone South Development is an important and vital roadway connection for Public Safety. Public Works Staff and equipment are a vital part of every large-scale emergency response effort. Therefore, the Public Works Department recommends the access road be built to a minimum width of 24 feet with B Style Curb and designed to 9 Ton Specifications. This road needs to be designed to handle large emergency equipment, such as Fire Engines, Public Works Vehicles and Electrical Line Repair Vehicles. As also mentioned by Police and Fire, this is a long cul-de-sac road with only a single access point.

I acknowledge that I have read the information above before responding to this survey.\*



Yes

### Purpose of Contact Information

The City is requesting that names and addresses are being captured as part of the public record. To ensure that those directly and most impacted by the policy decision are recorded and not unduly influenced by those not directly or most impacted by the decision, address verification is important.

Name\*

Steven Perkins

Email Address

[REDACTED]

Address\*

14650 Bowers DR NW

City

Ramsey

State

MN

Zip Code

55303

**Phone Number**

**For purposes of Public Safety Response, do you support a second access to Bowers Drive?\***

Yes, I support a full public road connection

Yes, but only if it is used by Public Safety (and Public Works Maintenance)

No, I do not support a second connection to Bowers Drive

Other (please describe below)

**Disclaimer**

For purposes of this survey, a non-response will be considered as a non-objection to the connection.

**Please comment and explain your response above.**

Bowers DR NW is already a very busy street for both pedestrians and vehicles. There are no sidewalks and the current flow of traffic already presents a huge danger to residents walking, etc. Connecting Bowers DR to the new development by road and/or walking trail will increase traffic and create a more dangerous situation for people on feet and bikes.

# Print

## Bowers Drive Connection to Riverstone South - Submission #2163

Date Submitted: 8/16/2020

### Riverstone South Background

[Riverstone South Background](#)

By filling out this form, you acknowledge that you have reviewed the materials on this link first. The City of Ramsey is recommending that a connection be made between Bowers Drive and the future Riverstone South Development.

### Fire Department Recommendation

The proposed road that would connect Bowers Drive with the new Riverstone South Development is an important and vital roadway connection for Public Safety. The roadway connection will give Public Safety a second access point to the long Bowers Drive dead-end in the event of an emergency. If Bowers Drive were to be blocked for some reason, this road would allow Public Safety a second access to the Bowers Drive Neighborhood. The road needs to be built to the standards to support the weight of a Fire Vehicle and Equipment and not designed as a standard pedestrian trail. Bowers Drive is the longest dead-end cul-de-sac we have in the City. Bowers Drive does not have any fire hydrants to assist in emergencies.

### Police Department Recommendation

The Police Department is in support of the proposed roadway which would connect the existing cul-de-sac of Bowers Drive that has existed for a number of years to the new Riverstone South Development. Due to the nature and location of this proposed road, the Police Department believes the positives to public safety outweigh any possible negatives which could result from the change. We believe having a second access would increase our ability to quickly render aid to the Ramsey Residents who live on this existing street, who we serve and protect. As the specifics of this road are discussed further, the Police Department would request it be constructed for year-round access and not have breakaway barriers or gates.

### Public Works Maintenance Recommendation

The proposed road that would connect Bowers Drive with the new Riverstone South Development is an important and vital roadway connection for Public Safety. Public Works Staff and equipment are a vital part of every large-scale emergency response effort. Therefore, the Public Works Department recommends the access road be built to a minimum width of 24 feet with B Style Curb and designed to 9 Ton Specifications. This road needs to be designed to handle large emergency equipment, such as Fire Engines, Public Works Vehicles and Electrical Line Repair Vehicles. As also mentioned by Police and Fire, this is a long cul-de-sac road with only a single access point.

I acknowledge that I have read the information above before responding to this survey.\*



Yes

### Purpose of Contact Information

The City is requesting that names and addresses are being captured as part of the public record. To ensure that those directly and most impacted by the policy decision are recorded and not unduly influenced by those not directly or most impacted by the decision, address verification is important.

Name\*

Email Address

Tony Durkin

Address\*

14409 Bowers drive

City

State

Zip Code

Ramsey

Mn

55303

**Phone Number**

**For purposes of Public Safety Response, do you support a second access to Bowers Drive?\***

Yes, I support a full public road connection

Yes, but only if it is used by Public Safety (and Public Works Maintenance)

No, I do not support a second connection to Bowers Drive

Other (please describe below)

**Disclaimer**

For purposes of this survey, a non-response will be considered as a non-objection to the connection.

**Please comment and explain your response above.**

I support public safety and a fire hydrant on the street, I do not support streetlights. My concern is that if a full access road is constructed that it will lead to more traffic which will lead to more wear and tear on the road which will lead to the road re-being redone which will include gutters and streetlights which will lead to a special assessment to my property taxes. I would like to see the signs of emergency vehicles only added to the access road.

# Print

## Bowers Drive Connection to Riverstone South - Submission #2165

Date Submitted: 8/16/2020

### Riverstone South Background

[Riverstone South Background](#)

By filling out this form, you acknowledge that you have reviewed the materials on this link first. The City of Ramsey is recommending that a connection be made between Bowers Drive and the future Riverstone South Development.

### Fire Department Recommendation

The proposed road that would connect Bowers Drive with the new Riverstone South Development is an important and vital roadway connection for Public Safety. The roadway connection will give Public Safety a second access point to the long Bowers Drive dead-end in the event of an emergency. If Bowers Drive were to be blocked for some reason, this road would allow Public Safety a second access to the Bowers Drive Neighborhood. The road needs to be built to the standards to support the weight of a Fire Vehicle and Equipment and not designed as a standard pedestrian trail. Bowers Drive is the longest dead-end cul-de-sac we have in the City. Bowers Drive does not have any fire hydrants to assist in emergencies.

### Police Department Recommendation

The Police Department is in support of the proposed roadway which would connect the existing cul-de-sac of Bowers Drive that has existed for a number of years to the new Riverstone South Development. Due to the nature and location of this proposed road, the Police Department believes the positives to public safety outweigh any possible negatives which could result from the change. We believe having a second access would increase our ability to quickly render aid to the Ramsey Residents who live on this existing street, who we serve and protect. As the specifics of this road are discussed further, the Police Department would request it be constructed for year-round access and not have breakaway barriers or gates.

### Public Works Maintenance Recommendation

The proposed road that would connect Bowers Drive with the new Riverstone South Development is an important and vital roadway connection for Public Safety. Public Works Staff and equipment are a vital part of every large-scale emergency response effort. Therefore, the Public Works Department recommends the access road be built to a minimum width of 24 feet with B Style Curb and designed to 9 Ton Specifications. This road needs to be designed to handle large emergency equipment, such as Fire Engines, Public Works Vehicles and Electrical Line Repair Vehicles. As also mentioned by Police and Fire, this is a long cul-de-sac road with only a single access point.

I acknowledge that I have read the information above before responding to this survey.\*



Yes

### Purpose of Contact Information

The City is requesting that names and addresses are being captured as part of the public record. To ensure that those directly and most impacted by the policy decision are recorded and not unduly influenced by those not directly or most impacted by the decision, address verification is important.

Name\*

Kelly Hudick

Email Address

[REDACTED]

Address\*

14420 Bowers Drive NW

City

Ramsey

State

MN

Zip Code

55303

**Phone Number**

**For purposes of Public Safety Response, do you support a second access to Bowers Drive?\***

Yes, I support a full public road connection

Yes, but only if it is used by Public Safety (and Public Works Maintenance)

No, I do not support a second connection to Bowers Drive

Other (please describe below)

**Disclaimer**

For purposes of this survey, a non-response will be considered as a non-objection to the connection.

**Please comment and explain your response above.**

# Print

## Bowers Drive Connection to Riverstone South - Submission #2166

Date Submitted: 8/16/2020

### Riverstone South Background

[Riverstone South Background](#)

By filling out this form, you acknowledge that you have reviewed the materials on this link first. The City of Ramsey is recommending that a connection be made between Bowers Drive and the future Riverstone South Development.

### Fire Department Recommendation

The proposed road that would connect Bowers Drive with the new Riverstone South Development is an important and vital roadway connection for Public Safety. The roadway connection will give Public Safety a second access point to the long Bowers Drive dead-end in the event of an emergency. If Bowers Drive were to be blocked for some reason, this road would allow Public Safety a second access to the Bowers Drive Neighborhood. The road needs to be built to the standards to support the weight of a Fire Vehicle and Equipment and not designed as a standard pedestrian trail. Bowers Drive is the longest dead-end cul-de-sac we have in the City. Bowers Drive does not have any fire hydrants to assist in emergencies.

### Police Department Recommendation

The Police Department is in support of the proposed roadway which would connect the existing cul-de-sac of Bowers Drive that has existed for a number of years to the new Riverstone South Development. Due to the nature and location of this proposed road, the Police Department believes the positives to public safety outweigh any possible negatives which could result from the change. We believe having a second access would increase our ability to quickly render aid to the Ramsey Residents who live on this existing street, who we serve and protect. As the specifics of this road are discussed further, the Police Department would request it be constructed for year-round access and not have breakaway barriers or gates.

### Public Works Maintenance Recommendation

The proposed road that would connect Bowers Drive with the new Riverstone South Development is an important and vital roadway connection for Public Safety. Public Works Staff and equipment are a vital part of every large-scale emergency response effort. Therefore, the Public Works Department recommends the access road be built to a minimum width of 24 feet with B Style Curb and designed to 9 Ton Specifications. This road needs to be designed to handle large emergency equipment, such as Fire Engines, Public Works Vehicles and Electrical Line Repair Vehicles. As also mentioned by Police and Fire, this is a long cul-de-sac road with only a single access point.

I acknowledge that I have read the information above before responding to this survey.\*



Yes

### Purpose of Contact Information

The City is requesting that names and addresses are being captured as part of the public record. To ensure that those directly and most impacted by the policy decision are recorded and not unduly influenced by those not directly or most impacted by the decision, address verification is important.

Name\*

Jamey McPheeters

Email Address

[REDACTED]

Address\*

14420 Bowers Dr NW

City

Ramsey

State

MN

Zip Code

55303

**Phone Number**

---

**For purposes of Public Safety Response, do you support a second access to Bowers Drive?\***

- Yes, I support a full public road connection
- Yes, but only if it is used by Public Safety (and Public Works Maintenance)
- No, I do not support a second connection to Bowers Drive
- Other (please describe below)

**Disclaimer**

For purposes of this survey, a non-response will be considered as a non-objection to the connection.

**Please comment and explain your response above.**

---

# Print

## Bowers Drive Connection to Riverstone South - Submission #2167

Date Submitted: 8/17/2020

### Riverstone South Background

[Riverstone South Background](#)

By filling out this form, you acknowledge that you have reviewed the materials on this link first. The City of Ramsey is recommending that a connection be made between Bowers Drive and the future Riverstone South Development.

### Fire Department Recommendation

The proposed road that would connect Bowers Drive with the new Riverstone South Development is an important and vital roadway connection for Public Safety. The roadway connection will give Public Safety a second access point to the long Bowers Drive dead-end in the event of an emergency. If Bowers Drive were to be blocked for some reason, this road would allow Public Safety a second access to the Bowers Drive Neighborhood. The road needs to be built to the standards to support the weight of a Fire Vehicle and Equipment and not designed as a standard pedestrian trail. Bowers Drive is the longest dead-end cul-de-sac we have in the City. Bowers Drive does not have any fire hydrants to assist in emergencies.

### Police Department Recommendation

The Police Department is in support of the proposed roadway which would connect the existing cul-de-sac of Bowers Drive that has existed for a number of years to the new Riverstone South Development. Due to the nature and location of this proposed road, the Police Department believes the positives to public safety outweigh any possible negatives which could result from the change. We believe having a second access would increase our ability to quickly render aid to the Ramsey Residents who live on this existing street, who we serve and protect. As the specifics of this road are discussed further, the Police Department would request it be constructed for year-round access and not have breakaway barriers or gates.

### Public Works Maintenance Recommendation

The proposed road that would connect Bowers Drive with the new Riverstone South Development is an important and vital roadway connection for Public Safety. Public Works Staff and equipment are a vital part of every large-scale emergency response effort. Therefore, the Public Works Department recommends the access road be built to a minimum width of 24 feet with B Style Curb and designed to 9 Ton Specifications. This road needs to be designed to handle large emergency equipment, such as Fire Engines, Public Works Vehicles and Electrical Line Repair Vehicles. As also mentioned by Police and Fire, this is a long cul-de-sac road with only a single access point.

I acknowledge that I have read the information above before responding to this survey.\*



Yes

### Purpose of Contact Information

The City is requesting that names and addresses are being captured as part of the public record. To ensure that those directly and most impacted by the policy decision are recorded and not unduly influenced by those not directly or most impacted by the decision, address verification is important.

Name\*

Katie Jensen

Email Address

[REDACTED]

Address\*

14331 Bowers Dr NW

City

Ramsey

State

MN

Zip Code

55303

**Phone Number**

**For purposes of Public Safety Response, do you support a second access to Bowers Drive?\***

- Yes, I support a full public road connection
- Yes, but only if it is used by Public Safety (and Public Works Maintenance)
- No, I do not support a second connection to Bowers Drive
- Other (please describe below)

**Disclaimer**

For purposes of this survey, a non-response will be considered as a non-objection to the connection.

**Please comment and explain your response above.**

# Print

## Bowers Drive Connection to Riverstone South - Submission #2168

Date Submitted: 8/17/2020

### Riverstone South Background

[Riverstone South Background](#)

By filling out this form, you acknowledge that you have reviewed the materials on this link first. The City of Ramsey is recommending that a connection be made between Bowers Drive and the future Riverstone South Development.

### Fire Department Recommendation

The proposed road that would connect Bowers Drive with the new Riverstone South Development is an important and vital roadway connection for Public Safety. The roadway connection will give Public Safety a second access point to the long Bowers Drive dead-end in the event of an emergency. If Bowers Drive were to be blocked for some reason, this road would allow Public Safety a second access to the Bowers Drive Neighborhood. The road needs to be built to the standards to support the weight of a Fire Vehicle and Equipment and not designed as a standard pedestrian trail. Bowers Drive is the longest dead-end cul-de-sac we have in the City. Bowers Drive does not have any fire hydrants to assist in emergencies.

### Police Department Recommendation

The Police Department is in support of the proposed roadway which would connect the existing cul-de-sac of Bowers Drive that has existed for a number of years to the new Riverstone South Development. Due to the nature and location of this proposed road, the Police Department believes the positives to public safety outweigh any possible negatives which could result from the change. We believe having a second access would increase our ability to quickly render aid to the Ramsey Residents who live on this existing street, who we serve and protect. As the specifics of this road are discussed further, the Police Department would request it be constructed for year-round access and not have breakaway barriers or gates.

### Public Works Maintenance Recommendation

The proposed road that would connect Bowers Drive with the new Riverstone South Development is an important and vital roadway connection for Public Safety. Public Works Staff and equipment are a vital part of every large-scale emergency response effort. Therefore, the Public Works Department recommends the access road be built to a minimum width of 24 feet with B Style Curb and designed to 9 Ton Specifications. This road needs to be designed to handle large emergency equipment, such as Fire Engines, Public Works Vehicles and Electrical Line Repair Vehicles. As also mentioned by Police and Fire, this is a long cul-de-sac road with only a single access point.

I acknowledge that I have read the information above before responding to this survey.\*



Yes

### Purpose of Contact Information

The City is requesting that names and addresses are being captured as part of the public record. To ensure that those directly and most impacted by the policy decision are recorded and not unduly influenced by those not directly or most impacted by the decision, address verification is important.

Name\*

Email Address

Stephen J Nash

Address\*

14500 Bowers Dr NW

City

State

Zip Code

ANOKA

MN

55303

**Phone Number**

**For purposes of Public Safety Response, do you support a second access to Bowers Drive?\***



Yes, I support a full public road connection



Yes, but only if it is used by Public Safety (and Public Works Maintenance)



No, I do not support a second connection to Bowers Drive



Other (please describe below)

**Disclaimer**

For purposes of this survey, a non-response will be considered as a non-objection to the connection.

**Please comment and explain your response above.**

First, we need a second access for Bowers Drive. Second, I believe that the access in question should be a public road which will help disperse traffic on Bowers Dr.

# Print

## Bowers Drive Connection to Riverstone South - Submission #2169

Date Submitted: 8/17/2020

### Riverstone South Background

[Riverstone South Background](#)

By filling out this form, you acknowledge that you have reviewed the materials on this link first. The City of Ramsey is recommending that a connection be made between Bowers Drive and the future Riverstone South Development.

### Fire Department Recommendation

The proposed road that would connect Bowers Drive with the new Riverstone South Development is an important and vital roadway connection for Public Safety. The roadway connection will give Public Safety a second access point to the long Bowers Drive dead-end in the event of an emergency. If Bowers Drive were to be blocked for some reason, this road would allow Public Safety a second access to the Bowers Drive Neighborhood. The road needs to be built to the standards to support the weight of a Fire Vehicle and Equipment and not designed as a standard pedestrian trail. Bowers Drive is the longest dead-end cul-de-sac we have in the City. Bowers Drive does not have any fire hydrants to assist in emergencies.

### Police Department Recommendation

The Police Department is in support of the proposed roadway which would connect the existing cul-de-sac of Bowers Drive that has existed for a number of years to the new Riverstone South Development. Due to the nature and location of this proposed road, the Police Department believes the positives to public safety outweigh any possible negatives which could result from the change. We believe having a second access would increase our ability to quickly render aid to the Ramsey Residents who live on this existing street, who we serve and protect. As the specifics of this road are discussed further, the Police Department would request it be constructed for year-round access and not have breakaway barriers or gates.

### Public Works Maintenance Recommendation

The proposed road that would connect Bowers Drive with the new Riverstone South Development is an important and vital roadway connection for Public Safety. Public Works Staff and equipment are a vital part of every large-scale emergency response effort. Therefore, the Public Works Department recommends the access road be built to a minimum width of 24 feet with B Style Curb and designed to 9 Ton Specifications. This road needs to be designed to handle large emergency equipment, such as Fire Engines, Public Works Vehicles and Electrical Line Repair Vehicles. As also mentioned by Police and Fire, this is a long cul-de-sac road with only a single access point.

I acknowledge that I have read the information above before responding to this survey.\*



Yes

### Purpose of Contact Information

The City is requesting that names and addresses are being captured as part of the public record. To ensure that those directly and most impacted by the policy decision are recorded and not unduly influenced by those not directly or most impacted by the decision, address verification is important.

Name\*

Ralph R Nissen

Email Address

[REDACTED]

Address\*

14710 Bowers Drive NW

City

Ramsey

State

MN

Zip Code

55303

**Phone Number**

**For purposes of Public Safety Response, do you support a second access to Bowers Drive?\***

Yes, I support a full public road connection

Yes, but only if it is used by Public Safety (and Public Works Maintenance)

No, I do not support a second connection to Bowers Drive

Other (please describe below)

**Disclaimer**

For purposes of this survey, a non-response will be considered as a non-objection to the connection.

**Please comment and explain your response above.**

# Print

## Bowers Drive Connection to Riverstone South - Submission #2170

Date Submitted: 8/17/2020

### Riverstone South Background

[Riverstone South Background](#)

By filling out this form, you acknowledge that you have reviewed the materials on this link first. The City of Ramsey is recommending that a connection be made between Bowers Drive and the future Riverstone South Development.

### Fire Department Recommendation

The proposed road that would connect Bowers Drive with the new Riverstone South Development is an important and vital roadway connection for Public Safety. The roadway connection will give Public Safety a second access point to the long Bowers Drive dead-end in the event of an emergency. If Bowers Drive were to be blocked for some reason, this road would allow Public Safety a second access to the Bowers Drive Neighborhood. The road needs to be built to the standards to support the weight of a Fire Vehicle and Equipment and not designed as a standard pedestrian trail. Bowers Drive is the longest dead-end cul-de-sac we have in the City. Bowers Drive does not have any fire hydrants to assist in emergencies.

### Police Department Recommendation

The Police Department is in support of the proposed roadway which would connect the existing cul-de-sac of Bowers Drive that has existed for a number of years to the new Riverstone South Development. Due to the nature and location of this proposed road, the Police Department believes the positives to public safety outweigh any possible negatives which could result from the change. We believe having a second access would increase our ability to quickly render aid to the Ramsey Residents who live on this existing street, who we serve and protect. As the specifics of this road are discussed further, the Police Department would request it be constructed for year-round access and not have breakaway barriers or gates.

### Public Works Maintenance Recommendation

The proposed road that would connect Bowers Drive with the new Riverstone South Development is an important and vital roadway connection for Public Safety. Public Works Staff and equipment are a vital part of every large-scale emergency response effort. Therefore, the Public Works Department recommends the access road be built to a minimum width of 24 feet with B Style Curb and designed to 9 Ton Specifications. This road needs to be designed to handle large emergency equipment, such as Fire Engines, Public Works Vehicles and Electrical Line Repair Vehicles. As also mentioned by Police and Fire, this is a long cul-de-sac road with only a single access point.

I acknowledge that I have read the information above before responding to this survey.\*



Yes

### Purpose of Contact Information

The City is requesting that names and addresses are being captured as part of the public record. To ensure that those directly and most impacted by the policy decision are recorded and not unduly influenced by those not directly or most impacted by the decision, address verification is important.

Name\*

Luther Olson

Email Address

[REDACTED]

Address\*

14840 Bowers Dr NW

City

Anoka

State

MN

Zip Code

55303

**Phone Number**

**For purposes of Public Safety Response, do you support a second access to Bowers Drive?\***

Yes, I support a full public road connection

Yes, but only if it is used by Public Safety (and Public Works Maintenance)

No, I do not support a second connection to Bowers Drive

Other (please describe below)

**Disclaimer**

For purposes of this survey, a non-response will be considered as a non-objection to the connection.

**Please comment and explain your response above.**

# Print

## Bowers Drive Connection to Riverstone South - Submission #2171

Date Submitted: 8/18/2020

### Riverstone South Background

[Riverstone South Background](#)

By filling out this form, you acknowledge that you have reviewed the materials on this link first. The City of Ramsey is recommending that a connection be made between Bowers Drive and the future Riverstone South Development.

### Fire Department Recommendation

The proposed road that would connect Bowers Drive with the new Riverstone South Development is an important and vital roadway connection for Public Safety. The roadway connection will give Public Safety a second access point to the long Bowers Drive dead-end in the event of an emergency. If Bowers Drive were to be blocked for some reason, this road would allow Public Safety a second access to the Bowers Drive Neighborhood. The road needs to be built to the standards to support the weight of a Fire Vehicle and Equipment and not designed as a standard pedestrian trail. Bowers Drive is the longest dead-end cul-de-sac we have in the City. Bowers Drive does not have any fire hydrants to assist in emergencies.

### Police Department Recommendation

The Police Department is in support of the proposed roadway which would connect the existing cul-de-sac of Bowers Drive that has existed for a number of years to the new Riverstone South Development. Due to the nature and location of this proposed road, the Police Department believes the positives to public safety outweigh any possible negatives which could result from the change. We believe having a second access would increase our ability to quickly render aid to the Ramsey Residents who live on this existing street, who we serve and protect. As the specifics of this road are discussed further, the Police Department would request it be constructed for year-round access and not have breakaway barriers or gates.

### Public Works Maintenance Recommendation

The proposed road that would connect Bowers Drive with the new Riverstone South Development is an important and vital roadway connection for Public Safety. Public Works Staff and equipment are a vital part of every large-scale emergency response effort. Therefore, the Public Works Department recommends the access road be built to a minimum width of 24 feet with B Style Curb and designed to 9 Ton Specifications. This road needs to be designed to handle large emergency equipment, such as Fire Engines, Public Works Vehicles and Electrical Line Repair Vehicles. As also mentioned by Police and Fire, this is a long cul-de-sac road with only a single access point.

I acknowledge that I have read the information above before responding to this survey.\*



Yes

### Purpose of Contact Information

The City is requesting that names and addresses are being captured as part of the public record. To ensure that those directly and most impacted by the policy decision are recorded and not unduly influenced by those not directly or most impacted by the decision, address verification is important.

Name\*

Ron Herst

Email Address

[REDACTED]

Address\*

14670 Bowers Dr. NW

City

Ramsey

State

MN

Zip Code

55303

**Phone Number**

**For purposes of Public Safety Response, do you support a second access to Bowers Drive?\***

- Yes, I support a full public road connection
- Yes, but only if it is used by Public Safety (and Public Works Maintenance)
- No, I do not support a second connection to Bowers Drive
- Other (please describe below)

**Disclaimer**

For purposes of this survey, a non-response will be considered as a non-objection to the connection.

**Please comment and explain your response above.**

We have lived on Bowers Drive for 30 years and have been perfectly happy with the level of "Safety" that we've had. We are strongly opposed to the proposal to have a second access to Bowers Drive from Riverstone South. In the 30 years that we've lived here, the road has been perfectly adequate from a safety perspective. The very last thing that we want is any additional access to this road. We actually believe that our road is safer from crime in that it is a "dead end" and there is no other way in or out. Why should residents of 242 homes have access to Bowers Drive??? WE DON'T WANT IT !!!

# Print

## Bowers Drive Connection to Riverstone South - Submission #2172

Date Submitted: 8/18/2020

### Riverstone South Background

[Riverstone South Background](#)

By filling out this form, you acknowledge that you have reviewed the materials on this link first. The City of Ramsey is recommending that a connection be made between Bowers Drive and the future Riverstone South Development.

### Fire Department Recommendation

The proposed road that would connect Bowers Drive with the new Riverstone South Development is an important and vital roadway connection for Public Safety. The roadway connection will give Public Safety a second access point to the long Bowers Drive dead-end in the event of an emergency. If Bowers Drive were to be blocked for some reason, this road would allow Public Safety a second access to the Bowers Drive Neighborhood. The road needs to be built to the standards to support the weight of a Fire Vehicle and Equipment and not designed as a standard pedestrian trail. Bowers Drive is the longest dead-end cul-de-sac we have in the City. Bowers Drive does not have any fire hydrants to assist in emergencies.

### Police Department Recommendation

The Police Department is in support of the proposed roadway which would connect the existing cul-de-sac of Bowers Drive that has existed for a number of years to the new Riverstone South Development. Due to the nature and location of this proposed road, the Police Department believes the positives to public safety outweigh any possible negatives which could result from the change. We believe having a second access would increase our ability to quickly render aid to the Ramsey Residents who live on this existing street, who we serve and protect. As the specifics of this road are discussed further, the Police Department would request it be constructed for year-round access and not have breakaway barriers or gates.

### Public Works Maintenance Recommendation

The proposed road that would connect Bowers Drive with the new Riverstone South Development is an important and vital roadway connection for Public Safety. Public Works Staff and equipment are a vital part of every large-scale emergency response effort. Therefore, the Public Works Department recommends the access road be built to a minimum width of 24 feet with B Style Curb and designed to 9 Ton Specifications. This road needs to be designed to handle large emergency equipment, such as Fire Engines, Public Works Vehicles and Electrical Line Repair Vehicles. As also mentioned by Police and Fire, this is a long cul-de-sac road with only a single access point.

I acknowledge that I have read the information above before responding to this survey.\*



Yes

### Purpose of Contact Information

The City is requesting that names and addresses are being captured as part of the public record. To ensure that those directly and most impacted by the policy decision are recorded and not unduly influenced by those not directly or most impacted by the decision, address verification is important.

Name\*

Gretchen Morris

Email Address

[REDACTED]

Address\*

14820 Bowers Dr. NW

City

Ramsey

State

MN

Zip Code

55303

**Phone Number**

**For purposes of Public Safety Response, do you support a second access to Bowers Drive?\***

- Yes, I support a full public road connection
- Yes, but only if it is used by Public Safety (and Public Works Maintenance)
- No, I do not support a second connection to Bowers Drive
- Other (please describe below)

**Disclaimer**

For purposes of this survey, a non-response will be considered as a non-objection to the connection.

**Please comment and explain your response above.**

Both John and I feel that to maintain the privacy and value of our neighborhood this access should not be allowed. There has never been any hard numbers put to incidents on our street that warrant the expenditure by the city or the change to our neighborhood. The new neighborhood is not being modeled after ours so therefore we feel it should be kept separate.

# Print

## Bowers Drive Connection to Riverstone South - Submission #2173

Date Submitted: 8/18/2020

### Riverstone South Background

[Riverstone South Background](#)

By filling out this form, you acknowledge that you have reviewed the materials on this link first. The City of Ramsey is recommending that a connection be made between Bowers Drive and the future Riverstone South Development.

### Fire Department Recommendation

The proposed road that would connect Bowers Drive with the new Riverstone South Development is an important and vital roadway connection for Public Safety. The roadway connection will give Public Safety a second access point to the long Bowers Drive dead-end in the event of an emergency. If Bowers Drive were to be blocked for some reason, this road would allow Public Safety a second access to the Bowers Drive Neighborhood. The road needs to be built to the standards to support the weight of a Fire Vehicle and Equipment and not designed as a standard pedestrian trail. Bowers Drive is the longest dead-end cul-de-sac we have in the City. Bowers Drive does not have any fire hydrants to assist in emergencies.

### Police Department Recommendation

The Police Department is in support of the proposed roadway which would connect the existing cul-de-sac of Bowers Drive that has existed for a number of years to the new Riverstone South Development. Due to the nature and location of this proposed road, the Police Department believes the positives to public safety outweigh any possible negatives which could result from the change. We believe having a second access would increase our ability to quickly render aid to the Ramsey Residents who live on this existing street, who we serve and protect. As the specifics of this road are discussed further, the Police Department would request it be constructed for year-round access and not have breakaway barriers or gates.

### Public Works Maintenance Recommendation

The proposed road that would connect Bowers Drive with the new Riverstone South Development is an important and vital roadway connection for Public Safety. Public Works Staff and equipment are a vital part of every large-scale emergency response effort. Therefore, the Public Works Department recommends the access road be built to a minimum width of 24 feet with B Style Curb and designed to 9 Ton Specifications. This road needs to be designed to handle large emergency equipment, such as Fire Engines, Public Works Vehicles and Electrical Line Repair Vehicles. As also mentioned by Police and Fire, this is a long cul-de-sac road with only a single access point.

I acknowledge that I have read the information above before responding to this survey.\*



Yes

### Purpose of Contact Information

The City is requesting that names and addresses are being captured as part of the public record. To ensure that those directly and most impacted by the policy decision are recorded and not unduly influenced by those not directly or most impacted by the decision, address verification is important.

Name\*

John Morris

Email Address

[REDACTED]

Address\*

14820 Bowers Dr

City

Ramsey

State

Minnesota

Zip Code

55303

**Phone Number**

**For purposes of Public Safety Response, do you support a second access to Bowers Drive?\***

- Yes, I support a full public road connection
- Yes, but only if it is used by Public Safety (and Public Works Maintenance)
- No, I do not support a second connection to Bowers Drive
- Other (please describe below)

**Disclaimer**

For purposes of this survey, a non-response will be considered as a non-objection to the connection.

**Please comment and explain your response above.**

Both John and I feel that to maintain the privacy and value of our neighborhood this access should not be allowed. There has never been any hard numbers put to incidents on our street that warrant the expenditure by the city or the change to our neighborhood. The new neighborhood is not being modeled after ours so therefore we feel it should be kept separate.

# Print

## Bowers Drive Connection to Riverstone South - Submission #2175

Date Submitted: 8/19/2020

### Riverstone South Background

[Riverstone South Background](#)

By filling out this form, you acknowledge that you have reviewed the materials on this link first. The City of Ramsey is recommending that a connection be made between Bowers Drive and the future Riverstone South Development.

### Fire Department Recommendation

The proposed road that would connect Bowers Drive with the new Riverstone South Development is an important and vital roadway connection for Public Safety. The roadway connection will give Public Safety a second access point to the long Bowers Drive dead-end in the event of an emergency. If Bowers Drive were to be blocked for some reason, this road would allow Public Safety a second access to the Bowers Drive Neighborhood. The road needs to be built to the standards to support the weight of a Fire Vehicle and Equipment and not designed as a standard pedestrian trail. Bowers Drive is the longest dead-end cul-de-sac we have in the City. Bowers Drive does not have any fire hydrants to assist in emergencies.

### Police Department Recommendation

The Police Department is in support of the proposed roadway which would connect the existing cul-de-sac of Bowers Drive that has existed for a number of years to the new Riverstone South Development. Due to the nature and location of this proposed road, the Police Department believes the positives to public safety outweigh any possible negatives which could result from the change. We believe having a second access would increase our ability to quickly render aid to the Ramsey Residents who live on this existing street, who we serve and protect. As the specifics of this road are discussed further, the Police Department would request it be constructed for year-round access and not have breakaway barriers or gates.

### Public Works Maintenance Recommendation

The proposed road that would connect Bowers Drive with the new Riverstone South Development is an important and vital roadway connection for Public Safety. Public Works Staff and equipment are a vital part of every large-scale emergency response effort. Therefore, the Public Works Department recommends the access road be built to a minimum width of 24 feet with B Style Curb and designed to 9 Ton Specifications. This road needs to be designed to handle large emergency equipment, such as Fire Engines, Public Works Vehicles and Electrical Line Repair Vehicles. As also mentioned by Police and Fire, this is a long cul-de-sac road with only a single access point.

I acknowledge that I have read the information above before responding to this survey.\*



Yes

### Purpose of Contact Information

The City is requesting that names and addresses are being captured as part of the public record. To ensure that those directly and most impacted by the policy decision are recorded and not unduly influenced by those not directly or most impacted by the decision, address verification is important.

Name\*

NICOLE JOHNSTON

Email Address

[REDACTED]

Address\*

14560 BOWERS DRIVE NW

City

RAMSEY

State

MN

Zip Code

55303

**Phone Number**

**For purposes of Public Safety Response, do you support a second access to Bowers Drive?\***

Yes, I support a full public road connection

Yes, but only if it is used by Public Safety (and Public Works Maintenance)

No, I do not support a second connection to Bowers Drive

Other (please describe below)

**Disclaimer**

For purposes of this survey, a non-response will be considered as a non-objection to the connection.

**Please comment and explain your response above.**

I do NOT want the extra traffic on the road, which leads to crime on the road. We did not move to the neighborhood to have additional traffic and issues. We moved here to have a quite DEAD END STREET!

# Print

## Bowers Drive Connection to Riverstone South - Submission #2177

Date Submitted: 8/19/2020

### Riverstone South Background

[Riverstone South Background](#)

By filling out this form, you acknowledge that you have reviewed the materials on this link first. The City of Ramsey is recommending that a connection be made between Bowers Drive and the future Riverstone South Development.

### Fire Department Recommendation

The proposed road that would connect Bowers Drive with the new Riverstone South Development is an important and vital roadway connection for Public Safety. The roadway connection will give Public Safety a second access point to the long Bowers Drive dead-end in the event of an emergency. If Bowers Drive were to be blocked for some reason, this road would allow Public Safety a second access to the Bowers Drive Neighborhood. The road needs to be built to the standards to support the weight of a Fire Vehicle and Equipment and not designed as a standard pedestrian trail. Bowers Drive is the longest dead-end cul-de-sac we have in the City. Bowers Drive does not have any fire hydrants to assist in emergencies.

### Police Department Recommendation

The Police Department is in support of the proposed roadway which would connect the existing cul-de-sac of Bowers Drive that has existed for a number of years to the new Riverstone South Development. Due to the nature and location of this proposed road, the Police Department believes the positives to public safety outweigh any possible negatives which could result from the change. We believe having a second access would increase our ability to quickly render aid to the Ramsey Residents who live on this existing street, who we serve and protect. As the specifics of this road are discussed further, the Police Department would request it be constructed for year-round access and not have breakaway barriers or gates.

### Public Works Maintenance Recommendation

The proposed road that would connect Bowers Drive with the new Riverstone South Development is an important and vital roadway connection for Public Safety. Public Works Staff and equipment are a vital part of every large-scale emergency response effort. Therefore, the Public Works Department recommends the access road be built to a minimum width of 24 feet with B Style Curb and designed to 9 Ton Specifications. This road needs to be designed to handle large emergency equipment, such as Fire Engines, Public Works Vehicles and Electrical Line Repair Vehicles. As also mentioned by Police and Fire, this is a long cul-de-sac road with only a single access point.

I acknowledge that I have read the information above before responding to this survey.\*



Yes

### Purpose of Contact Information

The City is requesting that names and addresses are being captured as part of the public record. To ensure that those directly and most impacted by the policy decision are recorded and not unduly influenced by those not directly or most impacted by the decision, address verification is important.

Name\*

Katherine Woods

Email Address

[REDACTED]

Address\*

14610 Bowers Drive NW

City

Ramsey

State

MN

Zip Code

55303

Phone Number

For purposes of Public Safety Response, do you support a second access to Bowers Drive?\*

Yes, I support a full public road connection

Yes, but only if it is used by Public Safety (and Public Works Maintenance)

No, I do not support a second connection to Bowers Drive

Other (please describe below)

**Disclaimer**

For purposes of this survey, a non-response will be considered as a non-objection to the connection.

**Please comment and explain your response above.**

# Print

## Bowers Drive Connection to Riverstone South - Submission #2180

Date Submitted: 8/21/2020

### Riverstone South Background

[Riverstone South Background](#)

By filling out this form, you acknowledge that you have reviewed the materials on this link first. The City of Ramsey is recommending that a connection be made between Bowers Drive and the future Riverstone South Development.

### Fire Department Recommendation

The proposed road that would connect Bowers Drive with the new Riverstone South Development is an important and vital roadway connection for Public Safety. The roadway connection will give Public Safety a second access point to the long Bowers Drive dead-end in the event of an emergency. If Bowers Drive were to be blocked for some reason, this road would allow Public Safety a second access to the Bowers Drive Neighborhood. The road needs to be built to the standards to support the weight of a Fire Vehicle and Equipment and not designed as a standard pedestrian trail. Bowers Drive is the longest dead-end cul-de-sac we have in the City. Bowers Drive does not have any fire hydrants to assist in emergencies.

### Police Department Recommendation

The Police Department is in support of the proposed roadway which would connect the existing cul-de-sac of Bowers Drive that has existed for a number of years to the new Riverstone South Development. Due to the nature and location of this proposed road, the Police Department believes the positives to public safety outweigh any possible negatives which could result from the change. We believe having a second access would increase our ability to quickly render aid to the Ramsey Residents who live on this existing street, who we serve and protect. As the specifics of this road are discussed further, the Police Department would request it be constructed for year-round access and not have breakaway barriers or gates.

### Public Works Maintenance Recommendation

The proposed road that would connect Bowers Drive with the new Riverstone South Development is an important and vital roadway connection for Public Safety. Public Works Staff and equipment are a vital part of every large-scale emergency response effort. Therefore, the Public Works Department recommends the access road be built to a minimum width of 24 feet with B Style Curb and designed to 9 Ton Specifications. This road needs to be designed to handle large emergency equipment, such as Fire Engines, Public Works Vehicles and Electrical Line Repair Vehicles. As also mentioned by Police and Fire, this is a long cul-de-sac road with only a single access point.

I acknowledge that I have read the information above before responding to this survey.\*



Yes

### Purpose of Contact Information

The City is requesting that names and addresses are being captured as part of the public record. To ensure that those directly and most impacted by the policy decision are recorded and not unduly influenced by those not directly or most impacted by the decision, address verification is important.

Name\*

Michel Pierce

Email Address

[REDACTED]

Address\*

14330 Bowers Dr. NW

City

Ramsey

State

MN

Zip Code

55303

**Phone Number**

**For purposes of Public Safety Response, do you support a second access to Bowers Drive?\***

- Yes, I support a full public road connection
- Yes, but only if it is used by Public Safety (and Public Works Maintenance)
- No, I do not support a second connection to Bowers Drive
- Other (please describe below)

**Disclaimer**

For purposes of this survey, a non-response will be considered as a non-objection to the connection.

**Please comment and explain your response above.**

Do not want a connection to Bowers Dr. as it will increase crime and traffic on a street that we enjoy living on. Also, Please ensure that there is no construction access via Bowers Dr for this proposed development. Finally, Still looking for confirmation of a buffer in the southeastern portion of the proposed development between the newly constructed homes on Bowers and the proposed development.

# Print

## Bowers Drive Connection to Riverstone South - Submission #2182

Date Submitted: 8/22/2020

### Riverstone South Background

[Riverstone South Background](#)

By filling out this form, you acknowledge that you have reviewed the materials on this link first. The City of Ramsey is recommending that a connection be made between Bowers Drive and the future Riverstone South Development.

### Fire Department Recommendation

The proposed road that would connect Bowers Drive with the new Riverstone South Development is an important and vital roadway connection for Public Safety. The roadway connection will give Public Safety a second access point to the long Bowers Drive dead-end in the event of an emergency. If Bowers Drive were to be blocked for some reason, this road would allow Public Safety a second access to the Bowers Drive Neighborhood. The road needs to be built to the standards to support the weight of a Fire Vehicle and Equipment and not designed as a standard pedestrian trail. Bowers Drive is the longest dead-end cul-de-sac we have in the City. Bowers Drive does not have any fire hydrants to assist in emergencies.

### Police Department Recommendation

The Police Department is in support of the proposed roadway which would connect the existing cul-de-sac of Bowers Drive that has existed for a number of years to the new Riverstone South Development. Due to the nature and location of this proposed road, the Police Department believes the positives to public safety outweigh any possible negatives which could result from the change. We believe having a second access would increase our ability to quickly render aid to the Ramsey Residents who live on this existing street, who we serve and protect. As the specifics of this road are discussed further, the Police Department would request it be constructed for year-round access and not have breakaway barriers or gates.

### Public Works Maintenance Recommendation

The proposed road that would connect Bowers Drive with the new Riverstone South Development is an important and vital roadway connection for Public Safety. Public Works Staff and equipment are a vital part of every large-scale emergency response effort. Therefore, the Public Works Department recommends the access road be built to a minimum width of 24 feet with B Style Curb and designed to 9 Ton Specifications. This road needs to be designed to handle large emergency equipment, such as Fire Engines, Public Works Vehicles and Electrical Line Repair Vehicles. As also mentioned by Police and Fire, this is a long cul-de-sac road with only a single access point.

I acknowledge that I have read the information above before responding to this survey.\*



Yes

### Purpose of Contact Information

The City is requesting that names and addresses are being captured as part of the public record. To ensure that those directly and most impacted by the policy decision are recorded and not unduly influenced by those not directly or most impacted by the decision, address verification is important.

Name\*

Terry and Jane Luke

Email Address

[REDACTED]

Address\*

14250 Bowers DR NW

City

Ramsey

State

MN

Zip Code

55303

**Phone Number**

**For purposes of Public Safety Response, do you support a second access to Bowers Drive?\***

- Yes, I support a full public road connection
- Yes, but only if it is used by Public Safety (and Public Works Maintenance)
- No, I do not support a second connection to Bowers Drive
- Other (please describe below)

**Disclaimer**

For purposes of this survey, a non-response will be considered as a non-objection to the connection.

**Please comment and explain your response above.**

We do not want this connection because it would create more vehicle and pedestrian traffic on Bowers DR. One of the reasons we moved to Bowers DR 43 years ago was for the privacy. Years ago the topic of making Bowers DR part of a scenic river route or trail was brought up. There was a very large turnout of Bowers DR residents at the meeting that were against that proposal. It was decided that in the future when the Pierson property was to be developed a trail would be within the boundary of the new development and would not be at all connected to Bowers DR. I would expect that the City of Ramsey would keep there word on this matter and that it should be on record.

# Print

## Bowers Drive Connection to Riverstone South - Submission #2183

Date Submitted: 8/22/2020

### Riverstone South Background

[Riverstone South Background](#)

By filling out this form, you acknowledge that you have reviewed the materials on this link first. The City of Ramsey is recommending that a connection be made between Bowers Drive and the future Riverstone South Development.

### Fire Department Recommendation

The proposed road that would connect Bowers Drive with the new Riverstone South Development is an important and vital roadway connection for Public Safety. The roadway connection will give Public Safety a second access point to the long Bowers Drive dead-end in the event of an emergency. If Bowers Drive were to be blocked for some reason, this road would allow Public Safety a second access to the Bowers Drive Neighborhood. The road needs to be built to the standards to support the weight of a Fire Vehicle and Equipment and not designed as a standard pedestrian trail. Bowers Drive is the longest dead-end cul-de-sac we have in the City. Bowers Drive does not have any fire hydrants to assist in emergencies.

### Police Department Recommendation

The Police Department is in support of the proposed roadway which would connect the existing cul-de-sac of Bowers Drive that has existed for a number of years to the new Riverstone South Development. Due to the nature and location of this proposed road, the Police Department believes the positives to public safety outweigh any possible negatives which could result from the change. We believe having a second access would increase our ability to quickly render aid to the Ramsey Residents who live on this existing street, who we serve and protect. As the specifics of this road are discussed further, the Police Department would request it be constructed for year-round access and not have breakaway barriers or gates.

### Public Works Maintenance Recommendation

The proposed road that would connect Bowers Drive with the new Riverstone South Development is an important and vital roadway connection for Public Safety. Public Works Staff and equipment are a vital part of every large-scale emergency response effort. Therefore, the Public Works Department recommends the access road be built to a minimum width of 24 feet with B Style Curb and designed to 9 Ton Specifications. This road needs to be designed to handle large emergency equipment, such as Fire Engines, Public Works Vehicles and Electrical Line Repair Vehicles. As also mentioned by Police and Fire, this is a long cul-de-sac road with only a single access point.

I acknowledge that I have read the information above before responding to this survey.\*



Yes

### Purpose of Contact Information

The City is requesting that names and addresses are being captured as part of the public record. To ensure that those directly and most impacted by the policy decision are recorded and not unduly influenced by those not directly or most impacted by the decision, address verification is important.

Name\*

Michael Manning

Email Address

[REDACTED]

Address\*

14365 Bowers Dr NW

City

Ramsey

State

Minnesota

Zip Code

55303-7264

**Phone Number**

**For purposes of Public Safety Response, do you support a second access to Bowers Drive?\***

Yes, I support a full public road connection

Yes, but only if it is used by Public Safety (and Public Works Maintenance)

No, I do not support a second connection to Bowers Drive

Other (please describe below)

**Disclaimer**

For purposes of this survey, a non-response will be considered as a non-objection to the connection.

**Please comment and explain your response above.**

# Print

## Bowers Drive Connection to Riverstone South - Submission #2184

Date Submitted: 8/23/2020

### Riverstone South Background

[Riverstone South Background](#)

By filling out this form, you acknowledge that you have reviewed the materials on this link first. The City of Ramsey is recommending that a connection be made between Bowers Drive and the future Riverstone South Development.

### Fire Department Recommendation

The proposed road that would connect Bowers Drive with the new Riverstone South Development is an important and vital roadway connection for Public Safety. The roadway connection will give Public Safety a second access point to the long Bowers Drive dead-end in the event of an emergency. If Bowers Drive were to be blocked for some reason, this road would allow Public Safety a second access to the Bowers Drive Neighborhood. The road needs to be built to the standards to support the weight of a Fire Vehicle and Equipment and not designed as a standard pedestrian trail. Bowers Drive is the longest dead-end cul-de-sac we have in the City. Bowers Drive does not have any fire hydrants to assist in emergencies.

### Police Department Recommendation

The Police Department is in support of the proposed roadway which would connect the existing cul-de-sac of Bowers Drive that has existed for a number of years to the new Riverstone South Development. Due to the nature and location of this proposed road, the Police Department believes the positives to public safety outweigh any possible negatives which could result from the change. We believe having a second access would increase our ability to quickly render aid to the Ramsey Residents who live on this existing street, who we serve and protect. As the specifics of this road are discussed further, the Police Department would request it be constructed for year-round access and not have breakaway barriers or gates.

### Public Works Maintenance Recommendation

The proposed road that would connect Bowers Drive with the new Riverstone South Development is an important and vital roadway connection for Public Safety. Public Works Staff and equipment are a vital part of every large-scale emergency response effort. Therefore, the Public Works Department recommends the access road be built to a minimum width of 24 feet with B Style Curb and designed to 9 Ton Specifications. This road needs to be designed to handle large emergency equipment, such as Fire Engines, Public Works Vehicles and Electrical Line Repair Vehicles. As also mentioned by Police and Fire, this is a long cul-de-sac road with only a single access point.

I acknowledge that I have read the information above before responding to this survey.\*



Yes

### Purpose of Contact Information

The City is requesting that names and addresses are being captured as part of the public record. To ensure that those directly and most impacted by the policy decision are recorded and not unduly influenced by those not directly or most impacted by the decision, address verification is important.

Name\*

Michael Sutton

Email Address

[REDACTED]

Address\*

14310 Bowers Drive NW

City

Ramsey

State

MN

Zip Code

55303

**Phone Number**

---

**For purposes of Public Safety Response, do you support a second access to Bowers Drive?\***

- Yes, I support a full public road connection
- Yes, but only if it is used by Public Safety (and Public Works Maintenance)
- No, I do not support a second connection to Bowers Drive
- Other (please describe below)

**Disclaimer**

For purposes of this survey, a non-response will be considered as a non-objection to the connection.

**Please comment and explain your response above.**

I see absolutely no value in the connection between Bowers Drive and the new development. The increased pedestrian and auto traffic if the connection would go forward would be unmanageable, potentially leading to assessments of the current residents to support street lighting along with other additions in the name of safety which we up until today have not needed. Also concerns of increased crime due to any additional connection allowing those who would commit crime alternate routes to escape.

# Print

## Bowers Drive Connection to Riverstone South - Submission #2210

Date Submitted: 8/26/2020

### Riverstone South Background

[Riverstone South Background](#)

By filling out this form, you acknowledge that you have reviewed the materials on this link first. The City of Ramsey is recommending that a connection be made between Bowers Drive and the future Riverstone South Development.

### Fire Department Recommendation

The proposed road that would connect Bowers Drive with the new Riverstone South Development is an important and vital roadway connection for Public Safety. The roadway connection will give Public Safety a second access point to the long Bowers Drive dead-end in the event of an emergency. If Bowers Drive were to be blocked for some reason, this road would allow Public Safety a second access to the Bowers Drive Neighborhood. The road needs to be built to the standards to support the weight of a Fire Vehicle and Equipment and not designed as a standard pedestrian trail. Bowers Drive is the longest dead-end cul-de-sac we have in the City. Bowers Drive does not have any fire hydrants to assist in emergencies.

### Police Department Recommendation

The Police Department is in support of the proposed roadway which would connect the existing cul-de-sac of Bowers Drive that has existed for a number of years to the new Riverstone South Development. Due to the nature and location of this proposed road, the Police Department believes the positives to public safety outweigh any possible negatives which could result from the change. We believe having a second access would increase our ability to quickly render aid to the Ramsey Residents who live on this existing street, who we serve and protect. As the specifics of this road are discussed further, the Police Department would request it be constructed for year-round access and not have breakaway barriers or gates.

### Public Works Maintenance Recommendation

The proposed road that would connect Bowers Drive with the new Riverstone South Development is an important and vital roadway connection for Public Safety. Public Works Staff and equipment are a vital part of every large-scale emergency response effort. Therefore, the Public Works Department recommends the access road be built to a minimum width of 24 feet with B Style Curb and designed to 9 Ton Specifications. This road needs to be designed to handle large emergency equipment, such as Fire Engines, Public Works Vehicles and Electrical Line Repair Vehicles. As also mentioned by Police and Fire, this is a long cul-de-sac road with only a single access point.

I acknowledge that I have read the information above before responding to this survey.\*



Yes

### Purpose of Contact Information

The City is requesting that names and addresses are being captured as part of the public record. To ensure that those directly and most impacted by the policy decision are recorded and not unduly influenced by those not directly or most impacted by the decision, address verification is important.

Name\*

John Fluegel

Email Address

Address\*

14740 Bowers Dr NW

City

Ramsey

State

MN

Zip Code

55303

**Phone Number**

---

**For purposes of Public Safety Response, do you support a second access to Bowers Drive?\***

- Yes, I support a full public road connection
- Yes, but only if it is used by Public Safety (and Public Works Maintenance)
- No, I do not support a second connection to Bowers Drive
- Other (please describe below)

**Disclaimer**

For purposes of this survey, a non-response will be considered as a non-objection to the connection.

**Please comment and explain your response above.**

\* Concerns that the 2nd access from neighboring high density low income housing will possibly reduce our property values on Bowers Dr. \* Concerns this new 2nd access will result in future street lighting, road widening, sidewalks and fire hydrants etc on Bowers Dr. \* Concerns of safety with increased foot/bicycle traffic on Bowers Dr. \* Overall concerns regarding the dramatic increase in high density housing in Ramsey....we moved to Ramsey from Mpls 40 years ago to live in a peaceful and quiet neighborhood.

# Print

## Bowers Drive Connection to Riverstone South - Submission #2243

Date Submitted: 9/2/2020

### Riverstone South Background

[Riverstone South Background](#)

By filling out this form, you acknowledge that you have reviewed the materials on this link first. The City of Ramsey is recommending that a connection be made between Bowers Drive and the future Riverstone South Development.

### Fire Department Recommendation

The proposed road that would connect Bowers Drive with the new Riverstone South Development is an important and vital roadway connection for Public Safety. The roadway connection will give Public Safety a second access point to the long Bowers Drive dead-end in the event of an emergency. If Bowers Drive were to be blocked for some reason, this road would allow Public Safety a second access to the Bowers Drive Neighborhood. The road needs to be built to the standards to support the weight of a Fire Vehicle and Equipment and not designed as a standard pedestrian trail. Bowers Drive is the longest dead-end cul-de-sac we have in the City. Bowers Drive does not have any fire hydrants to assist in emergencies.

### Police Department Recommendation

The Police Department is in support of the proposed roadway which would connect the existing cul-de-sac of Bowers Drive that has existed for a number of years to the new Riverstone South Development. Due to the nature and location of this proposed road, the Police Department believes the positives to public safety outweigh any possible negatives which could result from the change. We believe having a second access would increase our ability to quickly render aid to the Ramsey Residents who live on this existing street, who we serve and protect. As the specifics of this road are discussed further, the Police Department would request it be constructed for year-round access and not have breakaway barriers or gates.

### Public Works Maintenance Recommendation

The proposed road that would connect Bowers Drive with the new Riverstone South Development is an important and vital roadway connection for Public Safety. Public Works Staff and equipment are a vital part of every large-scale emergency response effort. Therefore, the Public Works Department recommends the access road be built to a minimum width of 24 feet with B Style Curb and designed to 9 Ton Specifications. This road needs to be designed to handle large emergency equipment, such as Fire Engines, Public Works Vehicles and Electrical Line Repair Vehicles. As also mentioned by Police and Fire, this is a long cul-de-sac road with only a single access point.

I acknowledge that I have read the information above before responding to this survey.\*



Yes

### Purpose of Contact Information

The City is requesting that names and addresses are being captured as part of the public record. To ensure that those directly and most impacted by the policy decision are recorded and not unduly influenced by those not directly or most impacted by the decision, address verification is important.

Name\*

Joshua J Fuhreck

Email Address

[REDACTED]

Address\*

14573 Bowers Dr NW

City

Ramsey

State

MN

Zip Code

55303

**Phone Number**

**For purposes of Public Safety Response, do you support a second access to Bowers Drive?\***

Yes, I support a full public road connection

Yes, but only if it is used by Public Safety (and Public Works Maintenance)

No, I do not support a second connection to Bowers Drive

Other (please describe below)

**Disclaimer**

For purposes of this survey, a non-response will be considered as a non-objection to the connection.

**Please comment and explain your response above.**

## Contact Information

The City is requesting that names and addresses are being captured as part of the public record. To ensure that those directly and most impacted by the policy decision are recorded and not unduly influenced by those not directly or most impacted by the decision, address verification is important.

<b>Name</b>	<b>Email Address</b>
Carol Larsen	[REDACTED]
<b>Address</b>	
14480 Bowers Dr, NW, Ramsey, MN 55303	
<b>Phone Number</b>	
[REDACTED]	

## Survey Question

For purposes of Public Safety Response, do you support a second access to Bowers Drive?

- Yes, I support a full public road connection
- Yes, but only if it is used by Public Safety (and Public Works Maintenance)
- No, I do not support a second connection to Bowers Drive
- Other (please describe below)

## Comments

On separate pages  
Please share with Council & Mayor.  
I have questions about exit & entrance on Bowers from  
Shirley Rd.

## Disclaimer

For purposes of this survey, a non-response will be considered as a non-objection to the connection.

Tim Gladhill, Deputy City Administrator  
Ramsey City Hall, 7550 Sunwood Dr. NW  
Ramsey, MN. 55303

Dear Mr. Gladhill,

In response to your notification that I have the opportunity to respond to your mailing regarding what I want in my backyard...Riverstone South. I do not support a second connection to Bowers Drive.

1. Believing that the people who bought lots and built homes without knowing that there was a possibility the city would put a road between their homes to access Bowers Drive, seems unfair to the residents in the two homes on either side of the "emergency entrance" proposed to Bowers Drive.
2. Headlights aimed at the homes directly across Bowers Drive from that entrance invades the privacy of those residences.
3. Opening up the entrance to 243 residences will create more traffic on our street which has already been the case because of the Capstone addition making it less safe for residents of Bowers to walk because of the speed of many of those vehicles. Monday is garbage pick up on Bowers Drive and there are already many garbage trucks speeding back out of Bowers Drive which I assume would increase even more if that access were open to Riverstone South.
4. None of the agencies who are promoting the emergency entrance live on Bowers Drive. I do, and I've lived here for 56 years. We've had very few emergencies on Bowers Drive during that time and I don't believe the length of the street has ever been hazardous for emergency vehicles.
5. One of the advantages to those of us who reside on Bowers Drive is that we know the neighborhood and our residents. Either those using Bowers Drive know where they are or are lost. Please don't give in to the myth that an expensive road connecting the proposed addition to Bowers Drive would benefit the residents of Bowers Drive. I don't believe it would. In the event of an emergency, not having any in probably over 60 years, if a tree blocked the road, nearly every household owns a chain saw. That speaks for itself. I've always felt safe here, basically because of the dead-end road. If anyone or anything looks suspicious, someone notices and will report it.
6. Bowers Drive owners use the street to walk their dogs and exercise themselves. Opening it up with free access to 240 more households will bring more dogs and people using the street for exercise. Visit Bowers Drive in the winter when you see how yellow the snow is in our entrance to our driveways and along the road let alone the leavings of the dogs by our plowed out mail boxes. Not everyone carries a bag to pick up after their pets. And you want to give access to 240 more households to access our street for the purpose of relieving their animals. No Thanks!!!!
7. If you would, please consider how opening up this entrance to benefit 240 more households, and how it would affect those who are residents who bought or built here were influenced by

the beauty and not overly crowded lots or streets. We were here first and consideration for us should be primary. There has to be a way that an emergency entrance could be restricted to emergency vehicles only...find out how emergency vehicles can activate signals on traffic lights when they need to get through... instead of leaving an emergency entrance open to all through traffic. Doing that would negatively impact us should you approve it...more traffic, too many people, many who are just curious and perhaps more chance for crime with an easier exit and entrance to our neighborhood.

8. Thank you for your consideration of my thoughts and those of many of my neighbors. Having lived here for over half a century, I would implore you to consider these thoughts and desires regarding this important issue.

*Sincerely,*

*Carol Larsen  
14480 Bowers Dr NW  
Ramsay, MN 55303*

