

MINNESOTA DEPARTMENT OF TRANSPORTATION
CITY OF RAMSEY
ANOKA COUNTY, MINNESOTA
2020 PUMA STREET IMPROVEMENTS
 CITY IMPROVEMENT PROJECT #20-04

MINN. PROJ. NO. _____ STATE FUNDS _____

--- GOVERNING SPECIFICATIONS ---
 THE 2018 EDITION OF THE MINNESOTA DEPARTMENT OF TRANSPORTATION
 "STANDARD SPECIFICATION FOR CONSTRUCTION" SHALL GOVERN.

ALL TRAFFIC CONTROL DEVICES AND SIGNING SHALL CONFORM AND BE INSTALLED IN ACCORDANCE
 WITH THE "MINNESOTA MANUAL ON UNIFORM TRAFFIC CONTROL DEVICES" (MN MUTCD) AND
 PART VI, "FIELD MANUAL" FOR TEMPORARY TRAFFIC CONTROL DEVICES.

DESIGN DESIGNATION	PUMA STREET NW
STA 0+35.00 TO STA 14+37.00	
FUNCTIONAL CLASSIFICATION	MINOR COLLECTOR
R-VALUE	25
ΣN-18	422,000
NO. & WIDTH OF TRAFFIC LANES	2 & 12 ft
NO. & WIDTH OF PARKING LANES	0
ADT (PRESENT YEAR) 2020	1,080
ADT (PROJECTED YEAR) 2040	3,780
HCA DT (PROJECTED YEAR) 2040	6.09%
DESIGN SPEED	30 mph
DESIGN LOAD	10 ton
DESIGN SPEED FOR ROADWAY BASED ON:	
STOPPING SIGHT DISTANCE	
HEIGHT OF EYE = 3.5 FT	
HEIGHT OF OBJECT = 2.0 FT	

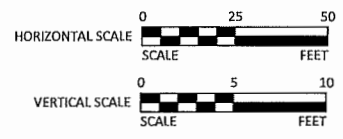
CONSTRUCTION PLAN FOR: GRADING, AGGREGATE BASE, PLANT MIXED BITUMINOUS PAVEMENT, CONCRETE CURB AND GUTTER, ADA IMPROVEMENTS, STORM SEWER, SANITARY SEWER, WATER MAIN, LANDSCAPING AND RELATED APPURTENANCES

S.A.P. 199-109-007 LOCATED ON PUMA STREET NW FROM 1,060' SOUTH OF ALPINE DRIVE NW TO ALPINE DRIVE NW

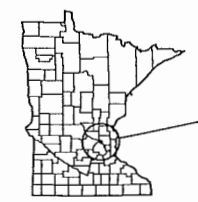
DESIGN DESIGNATION	OFF-ROAD TRAIL
STA 0+35.00 TO STA 14+37.00	
FUNCTIONAL CLASSIFICATION	BIKE TRAIL
DESIGN SPEED	20 MPH
STOPPING SIGHT DISTANCE	
HEIGHT OF EYE = 4.5 FT	
HEIGHT OF OBJECT = 0 FT	

PUMA STREET NW (S.A.P. 199-109-007)			
GROSS LENGTH	1,402.0 FEET	0.266 MILES	
BRIDGE LENGTH	NA FEET	NA MILES	
EXCEPTION LENGTH	NA FEET	NA MILES	
NET LENGTH	1,402.0 FEET	0.266 MILES	
LENGTH AND DESCRIPTION BASED UPON PROPOSED PUMA STREET NW CENTERLINE			

TYPICAL PLAN SCALE
UNLESS OTHERWISE NOTED:

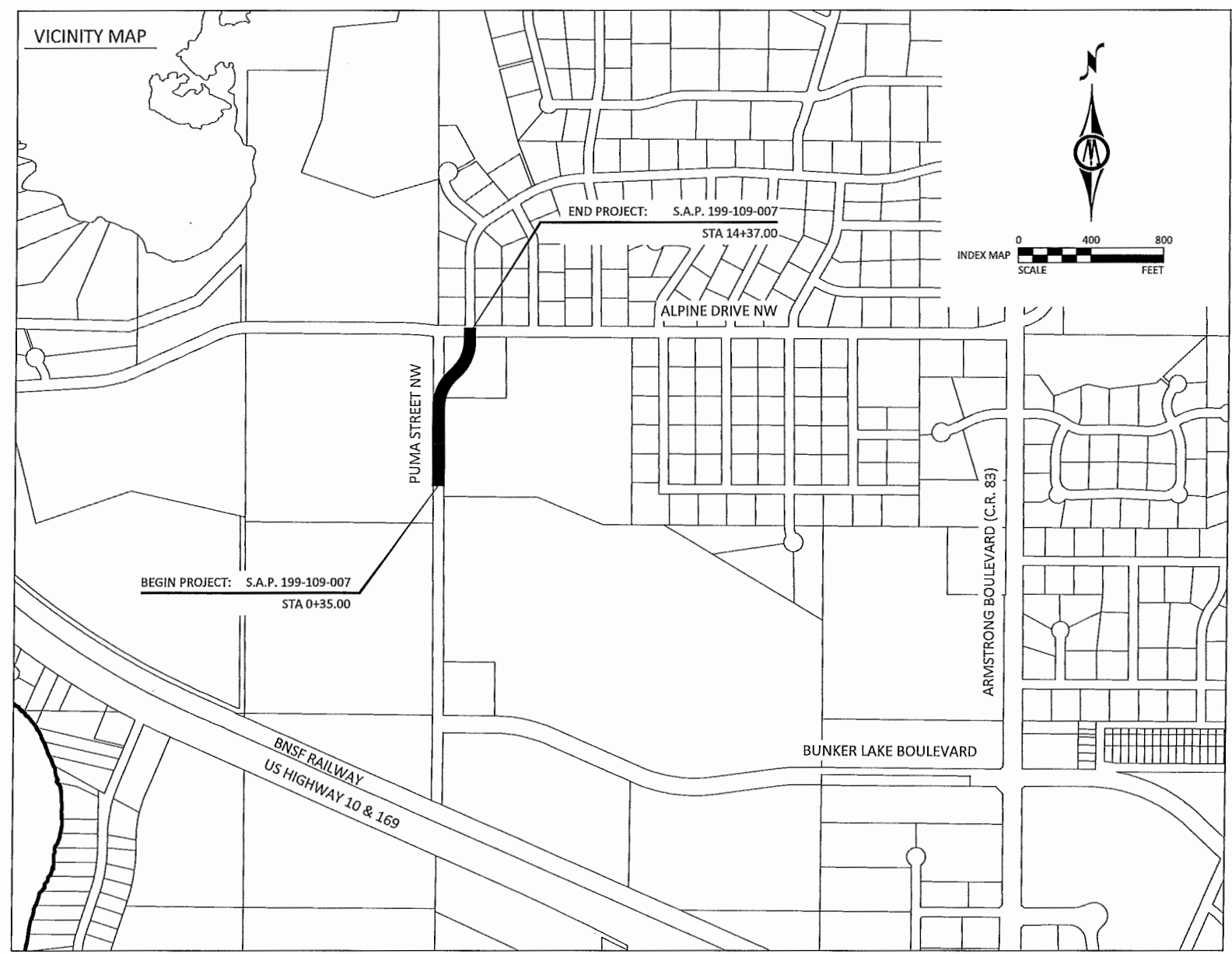


PROJECT LOCATION



CITY: RAMSEY
 COUNTY: ANOKA
 DISTRICT: METRO

THE SUBSURFACE UTILITY INFORMATION IN THIS PLAN IS UTILITY QUALITY LEVEL D UNLESS OTHERWISE NOTED. THIS UTILITY LEVEL WAS DETERMINED ACCORDING TO THE GUIDELINES OF CI/ASCE 38-02, ENTITLED "STANDARD GUIDELINES FOR THE COLLECTION AND DEPICTION OF EXISTING SUBSURFACE UTILITY DATA."



+ BM= 872.70 TOP NUT OF HYDRANT STA: 3+17 ADJACENT TO EX LIFT STATION	PROJECT DATUM: HORIZONTAL: ANOKA COUNTY COORDINATES (1996 ADJUSTMENT) VERTICAL: NGVD 29	RECORD DRAWING INFORMATION OBSERVER: CONTRACTOR: DATE:
--	--	---

SHEET NUMBER	SHEET TITLE
GENERAL	
1	TITLE SHEET
2	LEGEND
3	STATEMENT OF ESTIMATED QUANTITIES
4	ALIGNMENT TABULATION
CIVIL	
5	TYPICAL SECTIONS
6 - 8	CONSTRUCTION DETAILS
9 - 14	PEDESTRIAN CURB RAMP DETAILS
15	TRAFFIC CONTROL PLAN
16	EXISTING CONDITIONS & REMOVALS
17 - 20	STORM WATER POLLUTION PREVENTION PLAN
21 - 22	SANITARY SEWER & WATERMAIN PLAN & PROFILE
23 - 24	STORM SEWER & STREET PLAN & PROFILE
25	UTILITY LEADS
26	INTERSECTION DETAILS
27	SIGNAGE & STRIPING PLAN
28 - 33	CROSS SECTIONS
THIS PLAN SET CONTAINS 33 SHEETS.	

Kevin P. Kielb
 Kevin P. Kielb, P.E.
 Design Engineer: I hereby certify that this plan was prepared by me or under my direct supervision, and that I am a duly licensed Professional Engineer under the laws of the State of Minnesota.
 Date 05/21/2020 License Number 23211

Julie Dresel
 Approved: City of Ramsey Engineer Date 5/29/2020

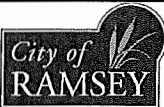
Julie Dresel
 District State Aid Engineer: Review for compliance with State Aid Rules/Policy Date 6/1/2020

For *Julie Dresel*
 Approved for State Aid Funding: State Aid Engineer Date 6/1/2020

© Bolton & Menk, Inc. 2020. All Rights Reserved. H:\RAMSEY\2020\2020-04\2020-04-01\2020-04-01.dwg 5/21/2020 9:05:19 AM



7533 SUNWOOD DR NW, SUITE 206
 RAMSEY, MINNESOTA 55303
 Phone: (763) 433-2851
 Email: ramsey@bolton-menk.com
 www.bolton-menk.com



DESIGNED	ZFL	NO.	REVISION	DATE
DRAWN	ZFL			
CHECKED	KPK			
CLIENT PROJ. NO.	R12.121040			

CITY OF RAMSEY, MINNESOTA		SHEET 1 OF 33
2020 PUMA STREET IMPROVEMENTS, S.A.P. 199-109-007		
STATE AID PROJECT NO.	S.A.P. 199-109-007	