

# CITY OF RAMSEY

## 16660 JASPER STREET DRAINAGE IMPROVEMENTS

### CITY IMPROVEMENT PROJECT NO. 19-13

## GOVERNING SPECIFICATIONS

THE 2018 EDITION OF THE MINNESOTA DEPARTMENT OF TRANSPORTATION "STANDARD SPECIFICATIONS FOR CONSTRUCTION" SHALL GOVERN.

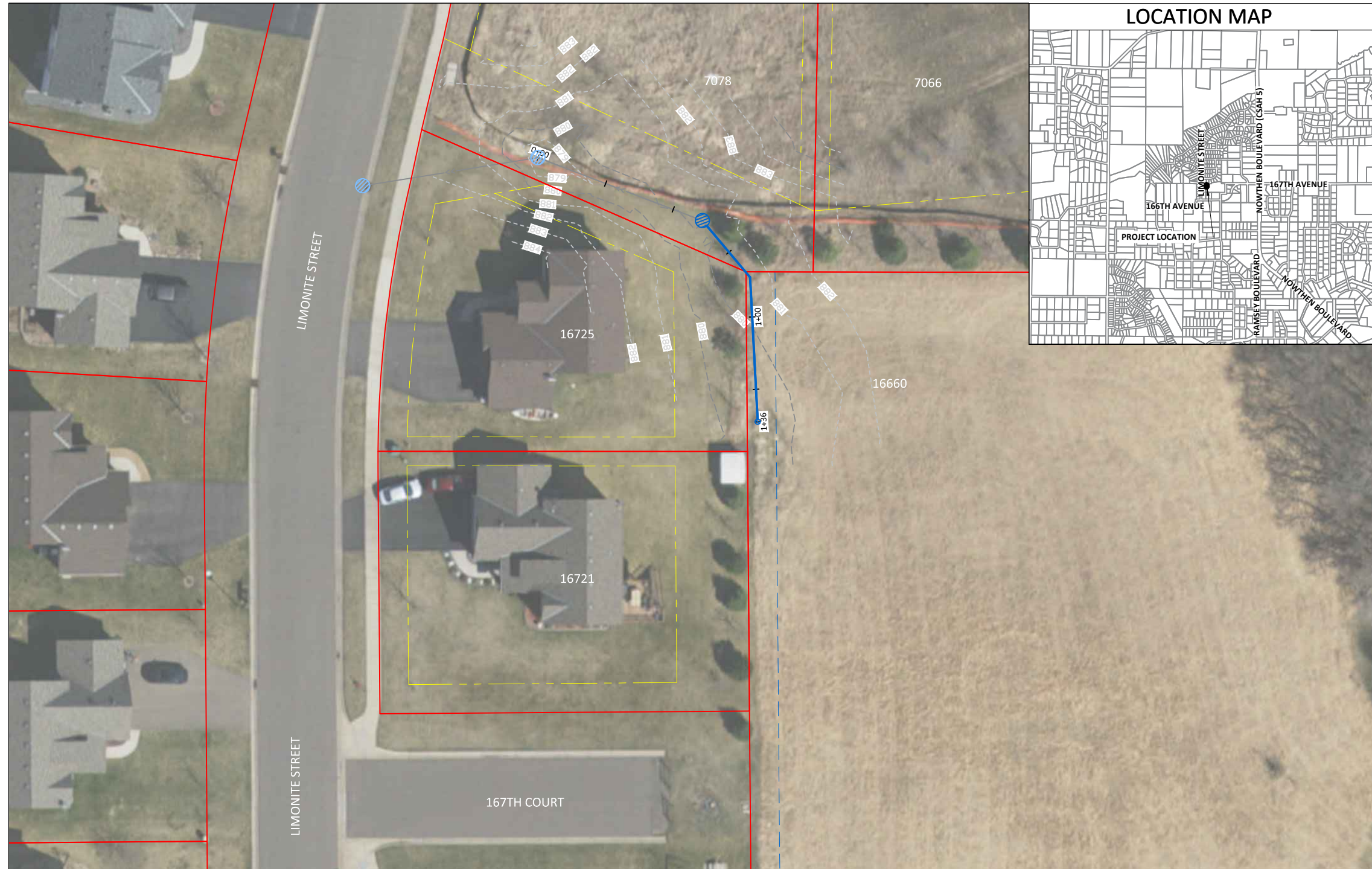
ALL FEDERAL, STATE AND LOCAL LAWS, REGULATIONS AND ORDINANCES SHALL BE COMPLIED WITH IN THE CONSTRUCTION OF THIS PROJECT.

ALL TRAFFIC CONTROL DEVICES AND SIGNING SHALL CONFORM TO THE MINNESOTA MANUAL ON UNIFORM TRAFFIC CONTROL DEVICES, INCLUDING THE FIELD MANUAL FOR TEMPORARY TRAFFIC CONTROL ZONE LAYOUTS.

### SHEET INDEX

THIS PLAN CONTAINS 3 SHEETS

SHEET No.	DESCRIPTION
1	TITLE SHEET
2	SITE PLAN
3	DETAILS



	LIGHT POLE		EASEMENT
	TREE		RIGHT OF WAY
	SHRUB		ELECTRIC
	SIGN		OVERHEAD ELECTRIC
	VALVE		GAS
	UTILITY PEDESTAL		TELECOMMUNICATIONS
	HAND HOLE		STORM SEWER
	REMOVE TREE		SANITARY SEWER
	3'X2' CATCH BASIN		WATERMAIN
	MANHOLE		SAWCUT PAVEMENT
	INLET PROTECTION		TREE LINE
	HYDRANT		FENCE
	VALVE		LANDSCAPING
			RETAINING WALL
			5' CONTOUR LINE
			1' CONTOUR LINE

I hereby certify that this plan, specification, or report was prepared by me or under my direct supervision and that I am a duly Licensed Professional Engineer under the laws of the State of Minnesota.

*Joe Feriancek*  
 JOE FERIANCEK, P.E.  
 CITY OF RAMSEY

57095 DATE 6/19/20  
 LIC. NO.

DATE	REVISION

SHEET 1 OF 3 SHEETS



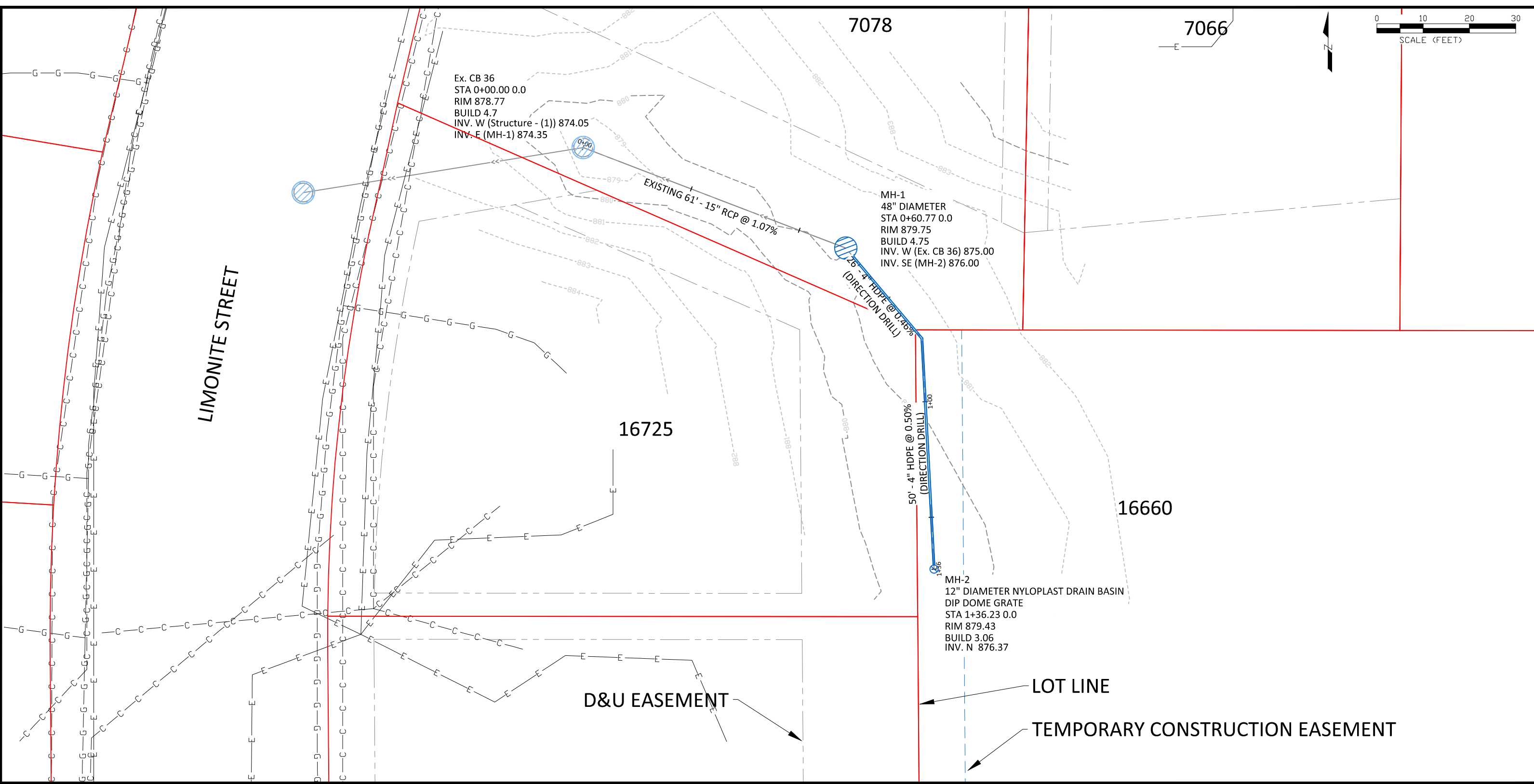
CITY OF RAMSEY  
 7550 SUNWOOD DRIVE  
 RAMSEY, MN 55303  
 (763) 427-1410 FAX (763) 433-9898

THE SUBSURFACE UTILITY INFORMATION IN THIS PLAN IS UTILITY QUALITY LEVEL D. THIS QUALITY LEVEL WAS DETERMINED ACCORDING TO THE GUIDELINES OF CI/ASCE 38-02, ENTITLED "STANDARD GUIDELINES FOR THE COLLECTION AND DEPICTION OF EXISTING SUBSURFACE UTILITY DATA."

NOTE: EXISTING UTILITY INFORMATION SHOWN ON THIS PLAN HAS BEEN PROVIDED BY THE UTILITY OWNER. THE CONTRACTOR SHALL FIELD VERIFY EXACT LOCATIONS PRIOR TO COMMENCING CONSTRUCTION AS REQUIRED BY STATE LAW. NOTIFY GOPHER STATE ONE CALL 1-800-252-1166 OR 651-454-0002



Call before you dig  
 811  
 651 454-0002 Metro  
 800 252-1166 Outstate  
[www.gopherstateonecall.org](http://www.gopherstateonecall.org)



7078

7066

LIMONITE STREET

16725

16660

D&U EASEMENT

LOT LINE

TEMPORARY CONSTRUCTION EASEMENT

Ex. CB 36  
 STA 0+00.00 0.0  
 RIM 878.77  
 BUILD 4.7  
 INV. W (Structure - (1)) 874.05  
 INV. E (MH-1) 874.35

MH-1  
 48" DIAMETER  
 STA 0+60.77 0.0  
 RIM 879.75  
 BUILD 4.75  
 INV. W (Ex. CB 36) 875.00  
 INV. SE (MH-2) 876.00

MH-2  
 12" DIAMETER NYLOPLAST DRAIN BASIN  
 DIP DOME GRATE  
 STA 1+36.23 0.0  
 RIM 879.43  
 BUILD 3.06  
 INV. N 876.37

EXISTING 61" - 15" RCP @ 1.07%

26" - 4" HDPE @ 0.50%  
 (DIRECTION DRILL)

50" - 4" HDPE @ 0.50%  
 (DIRECTION DRILL)

**LEGEND**

- EX. MAJOR CONTOUR
- - - EX. MINOR CONTOUR
- - - D&U EASEMENT
- - - TEMP CONSTRUCTION EASEMENT
- LOT LINE
- C --- COMMUNICATION LINE
- G --- GAS LINE
- E --- ELECTRIC LINE

**NOTE:**

1. RESTORE DISTURBED AREAS ON 7078 167TH XING & 16725 LIMONITE STREET WITH 4" TOPSOIL AND SODDING TYPE LAWN.
2. RESTORE DISTURBED AREAS ON 16660 JASPER STREET WITH PRAIRIE RESTORATION 'TALL WET GRASS MIX', OR APPROVED EQUAL.
3. CONTRACTOR IS RESPONSIBLE FOR FIXING ANY DAMAGE TO EXISTING IRRIGATION SYSTEMS.
4. TRACER WIRE MUST BE INSTALLED WITH ALL STORM SEWER PIPE.

**NOTE:**

5. PROTECT TREES FROM DAMAGE DURING CONSTRUCTION.
6. CONSTRUCTION ACTIVITIES MUST STAY WITHIN EXISTING DRAINAGE & UTILITY EASEMENTS AND TEMPORARY CONSTRUCTION EASEMENT. TEMPORARY CONSTRUCTION EASEMENT IS ACCESSIBLE FROM 167TH COURT.

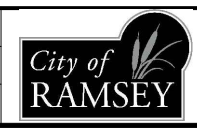
DATE	REVISION

I hereby certify that this plan, specification, or report was prepared by me or under my direct supervision and that I am a duly Licensed Professional Engineer under the laws of the State of Minnesota

*Joe Feriancek*  
 Joe Feriancek  
 Date 8/19/2020 Lic. No. 57095

DESIGNED BY:  
 JJF  
 DRAWN BY:  
 JJF  
 CHECKED BY:  
 JJF

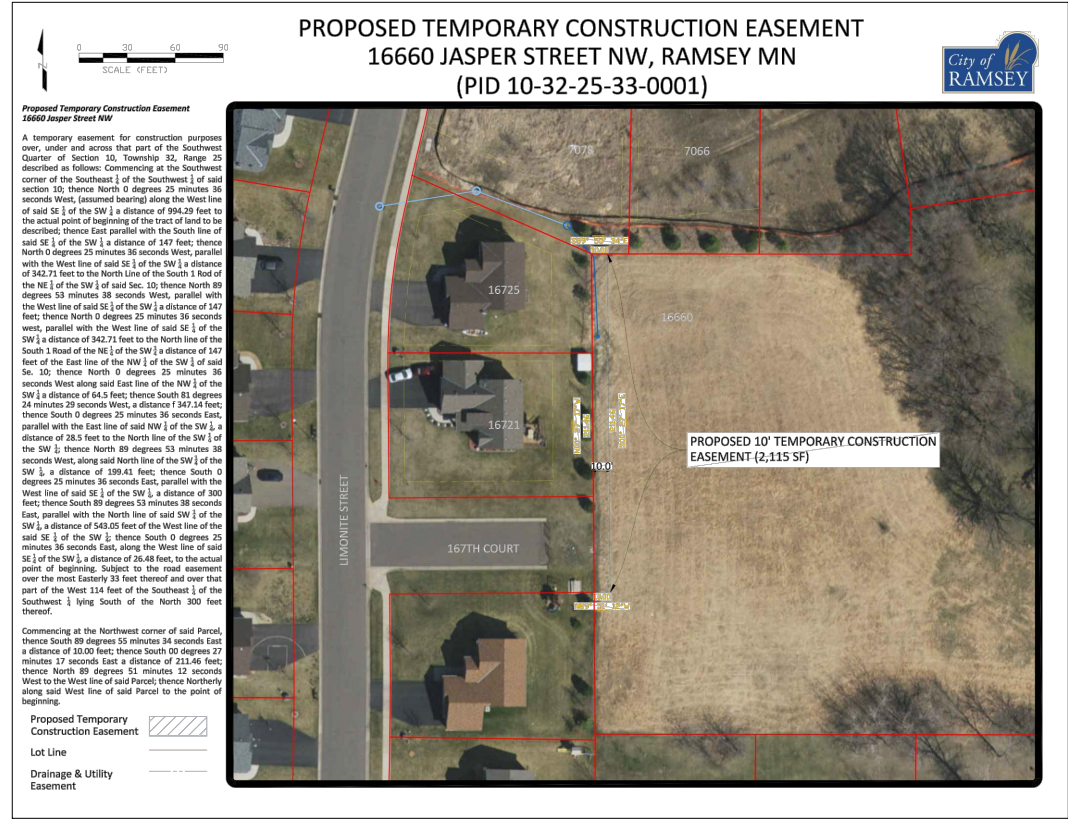
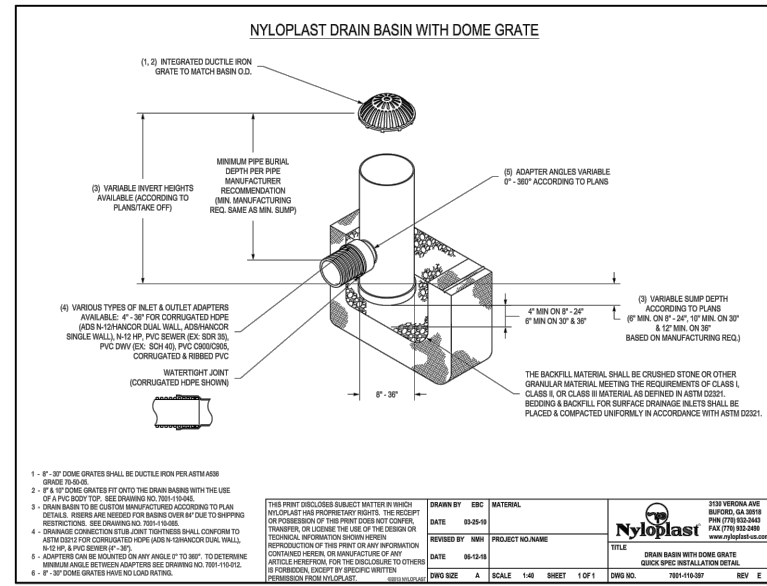
DATE:  
 8/19/20  
 FILE No.  
 19-13



CITY OF RAMSEY  
 7550 SUNWOOD DRIVE  
 RAMSEY, MN 55303  
 (763) 427-1410 FAX (763) 433-9898

SITE PLAN

16660 JASPER STREET DRAINAGE IMPROVEMENTS  
 CITY PROJECT NO. 19-13  
 CITY OF RAMSEY, MINNESOTA



**RESTORATION NOTES:**

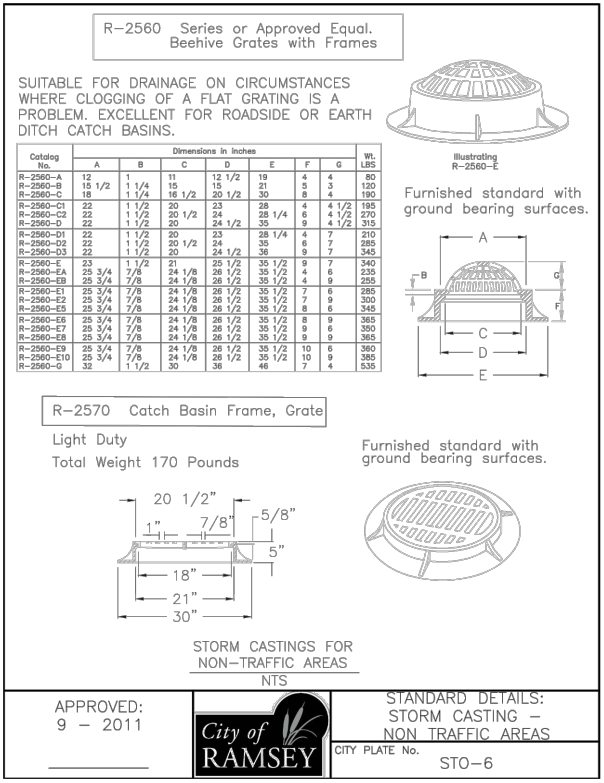
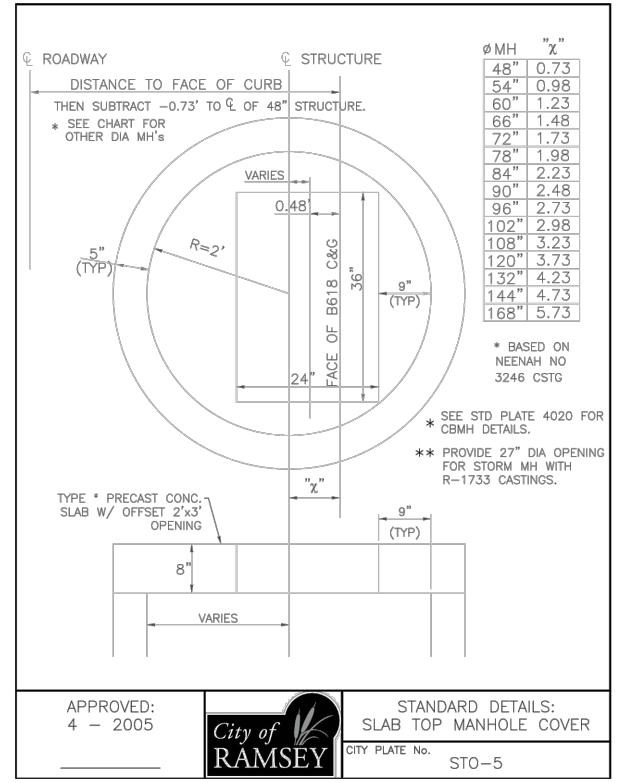
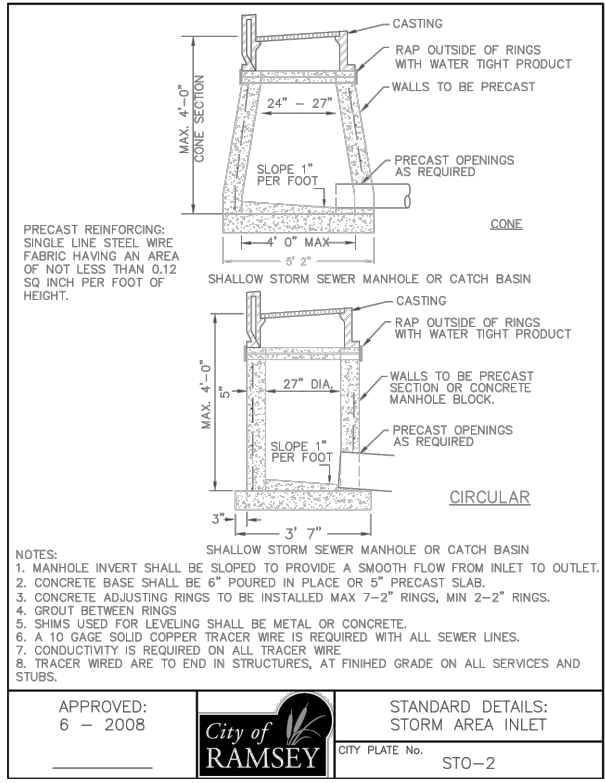
**CONTRACTOR IS RESPONSIBLE FOR RESTORING ALL IMPACTED AREAS TO EXISTING CONDITIONS OR BETTER.**

**PRAIRIE RESTORATION 'TALL WET GRASS' MIX DESIGN:**

**BROADCAST: 3 PLS LBS./10,000 SF**

**DRILL: 8-10 PLS LBS./ACRE**

- |                           |                          |
|---------------------------|--------------------------|
| 36.0% BIG BLUESTEM        | 3.0% FRINGED BROME       |
| 10.0% INDIAN GRASS        | 3.0% GREEN BULRUSH       |
| 7.0% CANADA WILD RYE      | 2.0% WOOL GRASS          |
| 7.0% VIRGINIA WILD RYE    | 1.0% KNOTSHEATH SEDGE    |
| 7.0% FOWL BLUEGRASS       | 1.0% POINTED BROOM SEDGE |
| 6.0% SIDE OATS GRAMA      | 1.0% FOX SEDGE           |
| 5.0% AMERICAN MANNA GRASS | 1.0% CORD GRASS          |
| 5.0% LITTLE BLUESTEM      | 0.5% BLUE JOINT GRASS    |
| 4.0% SWITCH GRASS         | 0.5% DUDLEY'S RUSH       |



**Notes:**

- INSTALLATION OF 4" OF TOPSOIL REQUIRED ACROSS ALL DISTURBED AREAS.
- TOPSOIL IS DEFINED AS BLACK DIRT COMPOSED OF UNCONSOLIDATED MATERIAL, LARGELY UNDECOMPOSED ORGANIC MATTER WHICH IS SUITABLE FOUNDATION FOR VEGETATIVE GROWTH.
- THE COMPOSITION OF TOPSOIL SHOULD CONTAIN NO MORE THAN THIRTY-FIVE PERCENT (35%) SAND CONTENT.

APPROVED: 7 - 2019

CITY OF RAMSEY

STANDARD DETAILS: TOPSOIL REQUIREMENTS

CITY PLATE No. ERO-6