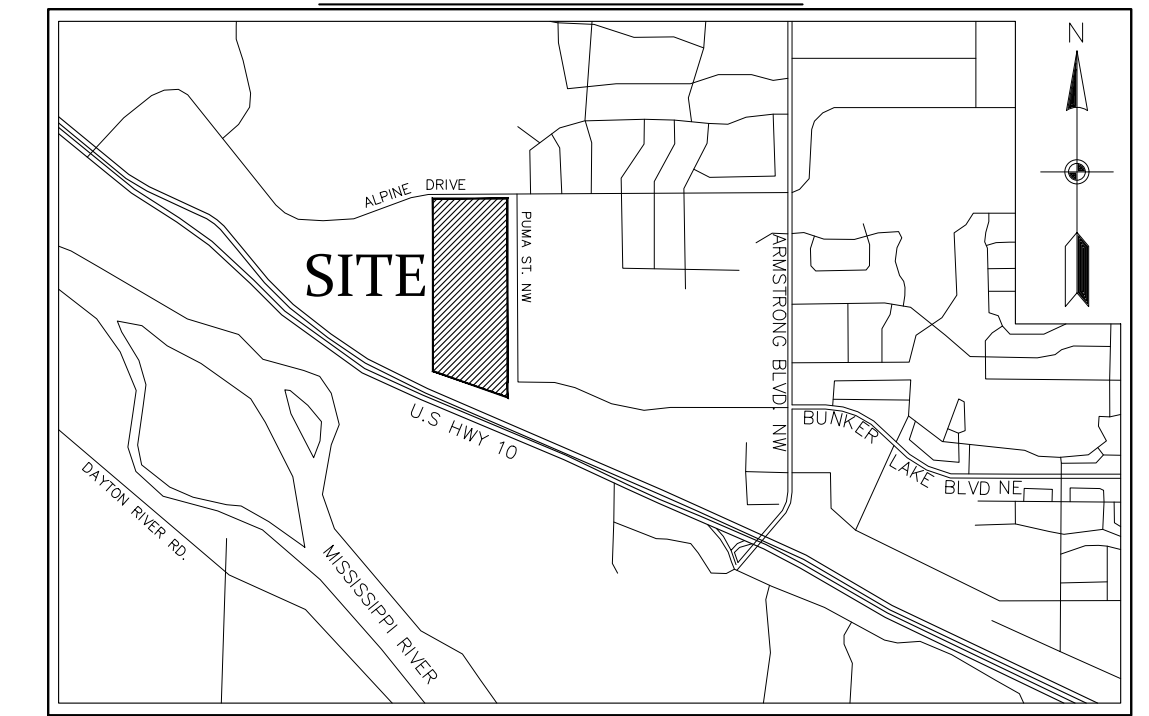


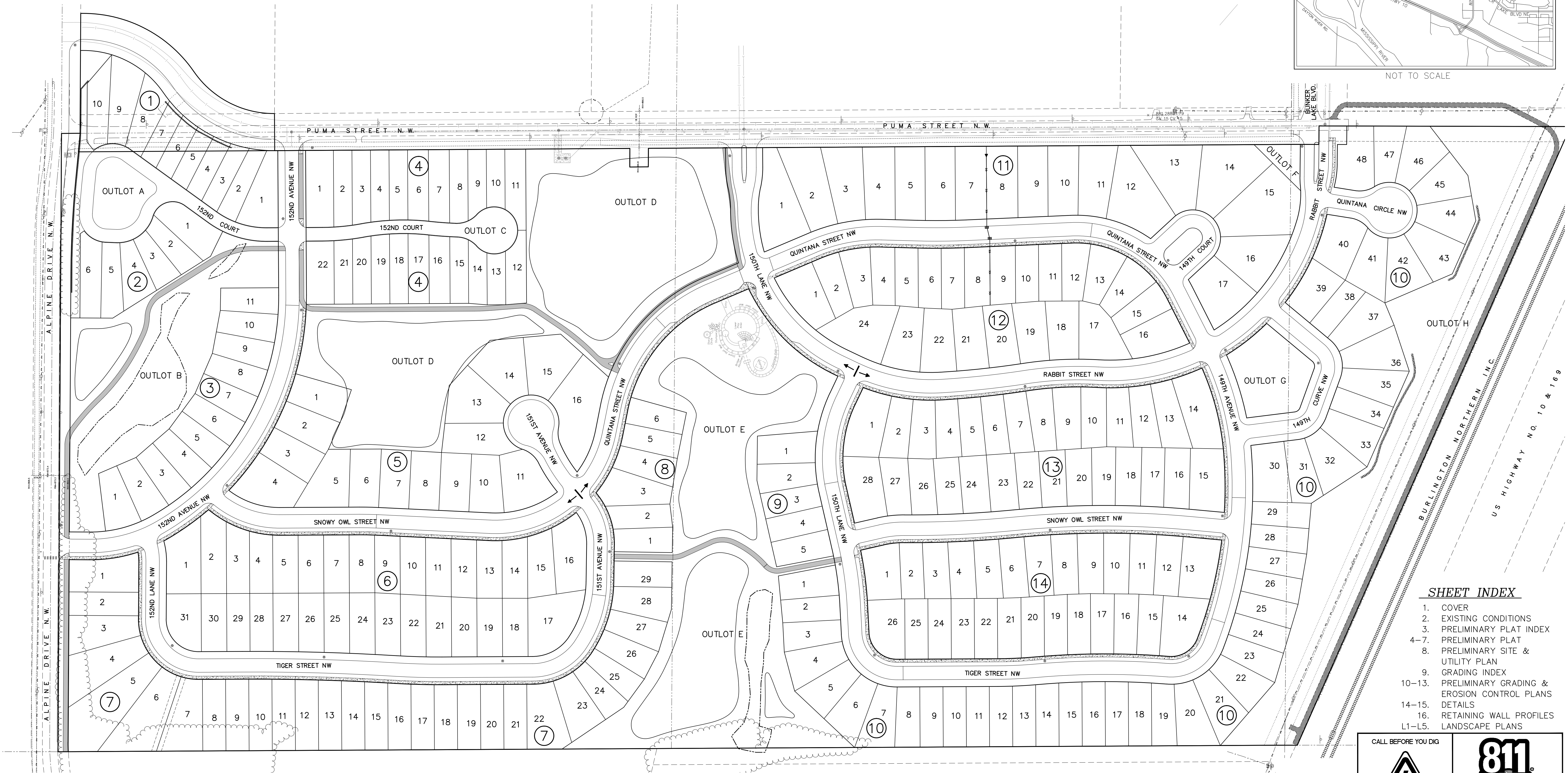
RIVERSTONE

RAMSEY, MINNESOTA

VICINITY MAP



NOT TO SCALE



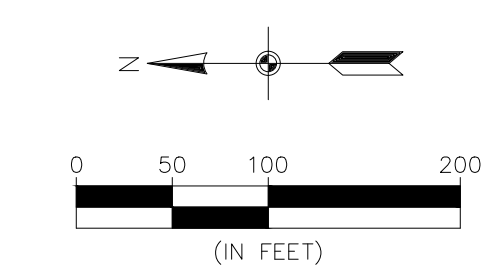
SHEET INDEX

- 1. COVER
- 2. EXISTING CONDITIONS
- 3. PRELIMINARY PLAT INDEX
- 4-7. PRELIMINARY PLAT
- 8. PRELIMINARY SITE & UTILITY PLAN
- 9. GRADING INDEX
- 10-13. PRELIMINARY GRADING & EROSION CONTROL PLANS
- 14-15. DETAILS
- 16. RETAINING WALL PROFILES
- L1-L5. LANDSCAPE PLANS

CALL BEFORE YOU DIG

811
Know what's below.
Call before you dig.

BENCHMARK	
1.	Anoka County Benchmark No. 3076 Elev.= 890.186 (NAVD 88)
2.	Anoka County Benchmark No. 2078 Elev.= 899.499 (NAVD 88)



Carlson McCain
• environmental
• engineering
• surveying

3890 Pheasant Ridge Drive NE,
Suite 100
Blaine, MN 55449
Phone: (763) 489-7900
Fax: (763) 489-7959
www.carlsonmccain.com

I hereby certify that this plan, specification or report was prepared by me or under my direct supervision and that I am a duly Licensed Professional Engineer under the laws of the State of Minnesota

Print Name: Brian J. Krystofiak, P.E.
Signature: *Brian J. Krystofiak*
Date: 3/08/17 License #: 25063

Drawn: ADB
Designed: BJK
Date: 3/08/17

Revisions:
1. 5/24/17 Per City Comments
2. 6/23/17 Per City Comments
3. 4/13/18 Revise Street names, B12L15-28 & B13L1-13 & add NE Trail
4. 6/13/18 Per City Comments
5. 12/4/19 Revise Layout Per Owner

RIVERSTONE DEVELOPMENT, LLC.
14015 Sunfish Lake B, Suite 400
Ramsey, MN 55303

RIVERSTONE
Ramsey, MN

COVER SHEET