

L.O.M.A. EXHIBIT

~FOR~ BROOKFIELD LAND, LLC
 ~ OF ~ LOTS 1 THRU 9, BLOCK 1 AND
 LOTS 1 THRU 16, BLOCK 2,
 BROOKFIELD EIGHTH ADDITION

DESCRIPTION OF AREA TO BE REMOVED FROM FLOOD ZONE

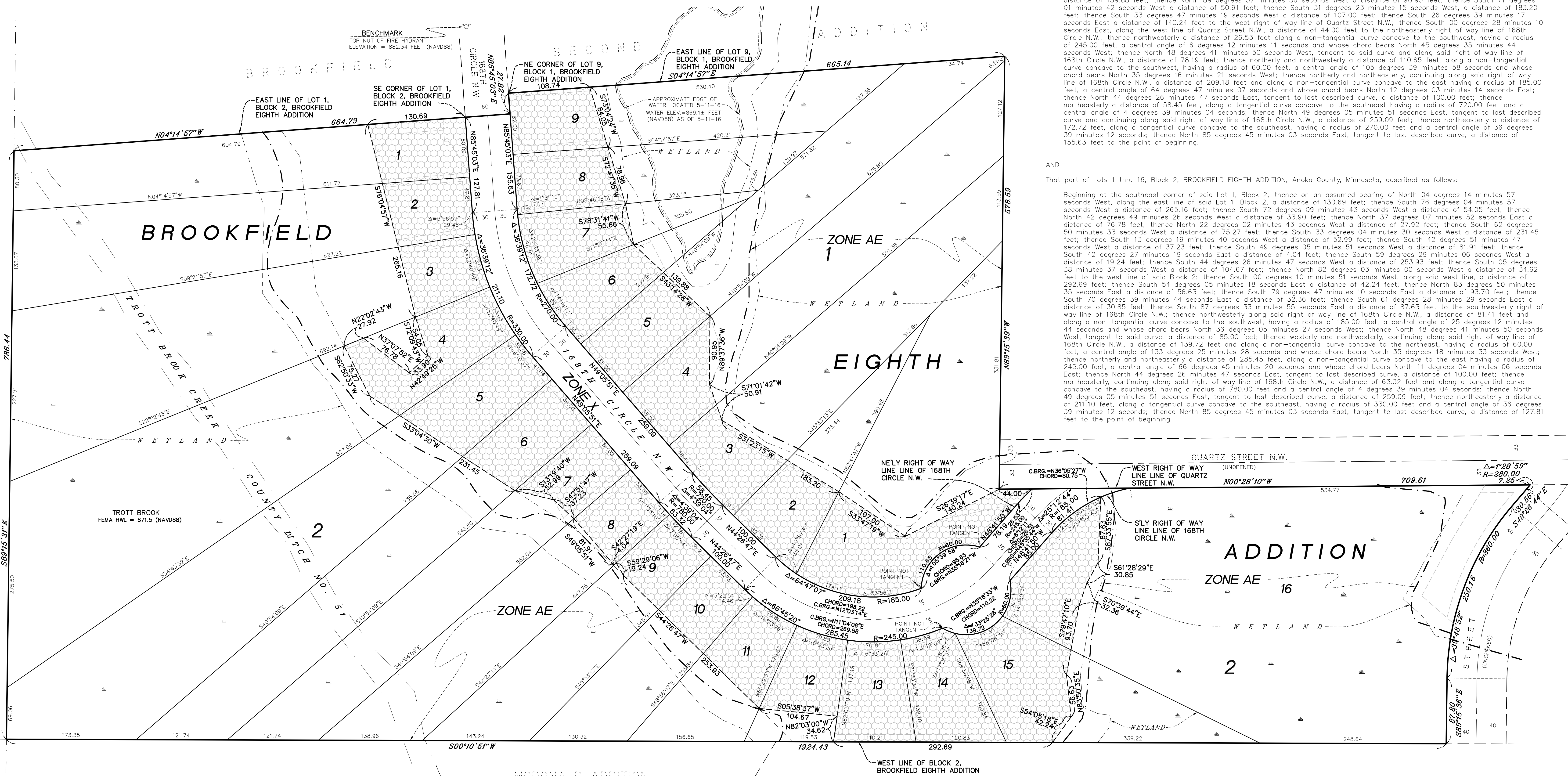
That part of Lots 1 thru 9, Block 1, BROOKFIELD EIGHTH ADDITION, Anoka County, Minnesota, described as follows:

Beginning at the northeast corner of said Lot 9, Block 1; thence on an assumed bearing of South 04 degrees 14 minutes 57 seconds East, along the east line of said Lot 9, Block 1, a distance of 108.74 feet; thence South 73 degrees 04 minutes 24 seconds West a distance of 84.05 feet; thence South 72 degrees 47 minutes 35 seconds West a distance of 78.96 feet; thence South 78 degrees 31 minutes 41 seconds West a distance of 55.66 feet; thence South 43 degrees 14 minutes 28 seconds West a distance of 139.88 feet; thence North 89 degrees 37 minutes 36 seconds West a distance of 90.95 feet; thence South 71 degrees 01 minutes 42 seconds West a distance of 50.91 feet; thence South 31 degrees 23 minutes 15 seconds West, a distance of 183.20 feet; thence South 33 degrees 47 minutes 19 seconds West a distance of 107.00 feet; thence South 26 degrees 39 minutes 17 seconds East a distance of 140.24 feet to the west right of way line of Quartz Street N.W.; thence South 00 degrees 28 minutes 10 seconds East, along the west line of Quartz Street N.W., a distance of 44.00 feet to the northeasterly right of way line of 168th Circle N.W.; thence northwesterly a distance of 26.53 feet along a non-tangential curve concave to the southwest, having a radius of 245.00 feet, a central angle of 6 degrees 12 minutes 11 seconds and whose chord bears North 45 degrees 35 minutes 44 seconds West; thence North 48 degrees 41 minutes 50 seconds West, tangent to said curve and along said right of way line of 168th Circle N.W., a distance of 78.19 feet; thence northerly and northwesterly a distance of 110.65 feet, along a non-tangential curve concave to the southwest, having a radius of 60.00 feet, a central angle of 105 degrees 39 minutes 58 seconds and whose chord bears North 35 degrees 16 minutes 21 seconds West; thence northerly and northeasterly, continuing along said right of way line of 168th Circle N.W., a distance of 209.18 feet and along a non-tangential curve concave to the east having a radius of 185.00 feet, a central angle of 64 degrees 47 minutes 07 seconds and whose chord bears North 12 degrees 03 minutes 14 seconds East; thence North 44 degrees 26 minutes 47 seconds East, tangent to last described curve, a distance of 100.00 feet; thence northeasterly a distance of 58.45 feet, along a tangential curve concave to the southeast having a radius of 720.00 feet and a central angle of 4 degrees 39 minutes 04 seconds; thence North 49 degrees 05 minutes 51 seconds East, tangent to last described curve and continuing along said right of way line of 168th Circle N.W., a distance of 259.09 feet; thence northeasterly a distance of 172.72 feet, along a tangential curve concave to the southeast, having a radius of 270.00 feet and a central angle of 36 degrees 39 minutes 12 seconds; thence North 85 degrees 45 minutes 03 seconds East, tangent to last described curve, a distance of 155.63 feet to the point of beginning.

AND

That part of Lots 1 thru 16, Block 2, BROOKFIELD EIGHTH ADDITION, Anoka County, Minnesota, described as follows:

Beginning at the southeast corner of said Lot 1, Block 2; thence on an assumed bearing of North 04 degrees 14 minutes 57 seconds West, along the east line of said Lot 1, Block 2, a distance of 130.69 feet; thence South 76 degrees 04 minutes 57 seconds West a distance of 265.16 feet; thence South 72 degrees 09 minutes 43 seconds West a distance of 54.05 feet; thence North 42 degrees 49 minutes 26 seconds West a distance of 33.90 feet; thence North 37 degrees 07 minutes 52 seconds East a distance of 76.78 feet; thence North 22 degrees 02 minutes 43 seconds West a distance of 27.92 feet; thence South 62 degrees 50 minutes 33 seconds West a distance of 75.27 feet; thence South 33 degrees 04 minutes 30 seconds West a distance of 231.45 feet; thence South 13 degrees 19 minutes 40 seconds West a distance of 52.99 feet; thence South 42 degrees 51 minutes 47 seconds West a distance of 37.23 feet; thence South 49 degrees 05 minutes 51 seconds West a distance of 81.91 feet; thence South 42 degrees 27 minutes 19 seconds East a distance of 4.04 feet; thence South 59 degrees 29 minutes 06 seconds West a distance of 19.24 feet; thence South 44 degrees 26 minutes 47 seconds West a distance of 253.93 feet; thence South 05 degrees 38 minutes 37 seconds West a distance of 104.67 feet; thence North 82 degrees 03 minutes 00 seconds West a distance of 34.62 feet to the west line of said Block 2; thence South 10 minutes 51 seconds West, along said west line, a distance of 292.69 feet; thence South 54 degrees 05 minutes 18 seconds East a distance of 42.24 feet; thence North 83 degrees 50 minutes 35 seconds East a distance of 56.63 feet; thence South 79 degrees 47 minutes 10 seconds East a distance of 93.70 feet; thence South 70 degrees 39 minutes 44 seconds East a distance of 32.36 feet; thence South 61 degrees 28 minutes 29 seconds East a distance of 30.85 feet; thence South 67 degrees 53 minutes 55 seconds East a distance of 87.63 feet to the southwesterly right of way line of 168th Circle N.W.; thence northwesterly along said right of way line of 168th Circle N.W., a distance of 81.41 feet and along a non-tangential curve concave to the southwest, having a radius of 185.00 feet, a central angle of 25 degrees 12 minutes 44 seconds and whose chord bears North 36 degrees 05 minutes 27 seconds West; thence North 48 degrees 41 minutes 50 seconds West, tangent to said curve, a distance of 85.00 feet; thence westerly and northwesterly, continuing along said right of way line of 168th Circle N.W., a distance of 139.72 feet and along a non-tangential curve concave to the northeast, having a radius of 60.00 feet, a central angle of 133 degrees 25 minutes 28 seconds and whose chord bears North 35 degrees 18 minutes 33 seconds West; thence northerly and northeasterly a distance of 285.45 feet, along a non-tangential curve concave to the east having a radius of 245.00 feet, a central angle of 66 degrees 45 minutes 20 seconds and whose chord bears North 11 degrees 04 minutes 06 seconds East; thence North 44 degrees 26 minutes 47 seconds East, tangent to last described curve, a distance of 100.00 feet; thence northeasterly, continuing along said right of way line of 168th Circle N.W., a distance of 63.32 feet and along a tangential curve concave to the southeast, having a radius of 780.00 feet and a central angle of 4 degrees 39 minutes 04 seconds; thence North 49 degrees 05 minutes 51 seconds East, tangent to last described curve, a distance of 259.09 feet; thence northeasterly a distance of 211.10 feet, along a tangential curve concave to the southeast, having a radius of 330.00 feet and a central angle of 36 degrees 39 minutes 12 seconds; thence North 85 degrees 45 minutes 03 seconds East, tangent to last described curve, a distance of 127.81 feet to the point of beginning.



LEGEND

- DENOTES PROPOSED AREA (AS DESCRIBED) TO BE REMOVED FROM FLOOD ZONE.
- DENOTES DRAINAGE AND UTILITY EASEMENT DEDICATED PER THE RECORDED PLAT OF BROOKVIEW EIGHTH ADDITION.
- DENOTES CURRENT FLOOD ZONE LINE ACCORDING TO FLOOD INSURANCE RATE MAP COMMUNITY NO. 270681 PANEL 0165 SUFFIX E, MAP NUMBER 27003C0165E BY THE FEDERAL EMERGENCY MANAGEMENT AGENCY, EFFECTIVE DATE DECEMBER 16, 2015.

NOTES

- Bearings shown are on the Anoka County Coordinate System.
- Surveyed premises shown on this survey map is in Flood Zone X (Areas determined to be outside the 0.2% annual chance flood plain), Flood Zone AE (Base Flood Elevations determined). Floodway areas in Zone AE - The floodway is the channel of a stream plus any adjacent flood plain areas that must be kept free of encroachment so that the 1% annual chance flood can be carried without substantial increases in flood heights. According to Flood Insurance Rate Map Community No. 270681 Panel 0165 Suffix E, Map Number 27003C0165E by the Federal Emergency Management Agency, effective date December 16, 2015.
- Wetland Delineation by Kjolhaug Environmental Services Company.
- Wetland Lines location by E.G. Rud and Sons, Inc August 2016.

PROPERTY DESCRIPTION

Lots 1 thru 9, Block 1 and Lots 1 thru 16, Block 2, BROOKFIELD EIGHTH ADDITION, Anoka County, Minnesota.

DRAWN BY: JEN	JOB NO: 16343PP	DATE: 03/07/18
CHECK BY: JER	SCANNED <input type="checkbox"/>	
1		
2		
3		
NO. DATE DESCRIPTION BY		

Date: 03-07-18 License No. 41578

E.G. RUD & SONS, INC.
 Professional Land Surveyors
 6776 Lake Drive NE, Suite 110
 Lino Lakes, MN 55014
 Tel. (651) 361-8200 Fax (651) 361-8701

