

LANDSCAPE SCHEDULE

OVERSTORY TREES	SIZE	ROOT	QTY.
Quercus bicolor	2"	BB	18
Acer X freemanii 'Jeffersred'	2"	BB	34
Tilia americana 'Boulevard'	2"	BB	11
Celtis occidentalis	2"	BB	7
Gleditsia tricanthos var. inermis 'Skycole'	2"	BB	13
ORNAMENTAL TREES	SIZE	ROOT	QTY.
Amelanchier	12"	BB	7
Betula nigra	12"	BB	8
Malus 'Red Jewel'	1"	BB	14
CONIFERUS TREES	SIZE	ROOT	QTY.
Picea glauca densata	6"	HT.	11
Pinus nigra	6"	HT.	9
Pinus sylvestris	6"	HT.	6
SHRUBS	SIZE	ROOT	QTY.
Viburnum lentago	24"	HT.	14
Cornus sericea 'Cardinal'	24"	HT.	29
Syringa vulgaris	24"	HT.	27

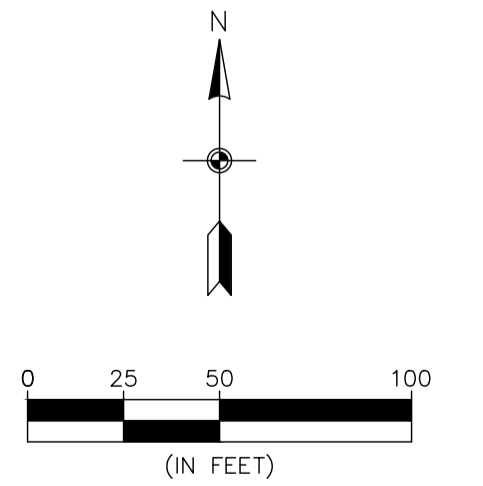
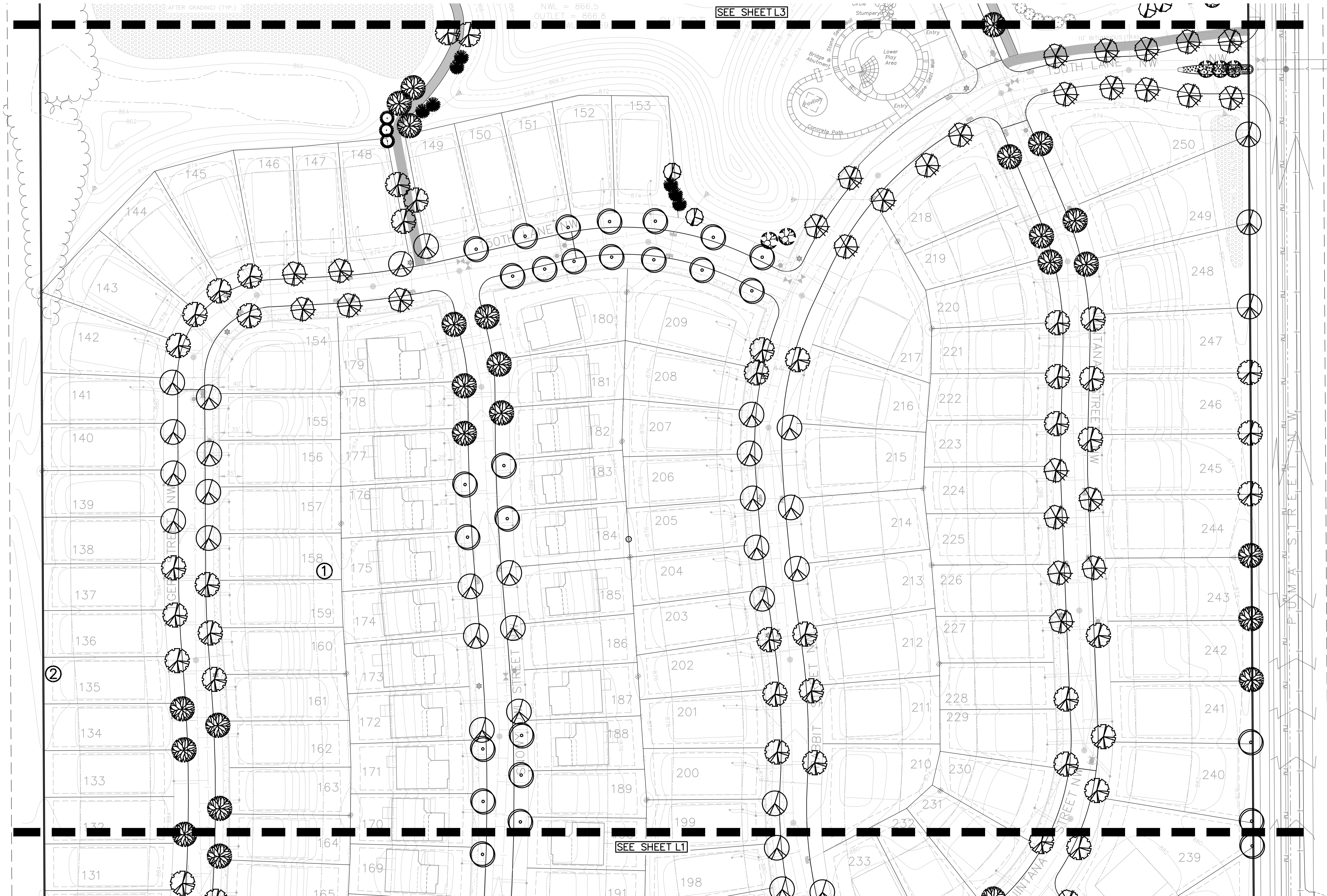
NATIVE SEED MIX FOR BERM

Common Name	Scientific Name	Rate (kg/ha)	Rate (lb/ac)	% of Mix (% by wt)	Seeds/ sq ft
big bluestem	Andropogon gerardii	1.12	1.00	2.90%	3.68
side-oats grama	Bouteloua curtipendula	1.12	1.00	2.89%	2.20
kalm's brome	Bromus kalmii	1.68	1.50	4.34%	4.40
nodding wild rye	Elymus canadensis	1.40	1.25	3.61%	2.38
bottlebrush grass	Elymus hystrix	0.36	0.32	0.91%	0.88
slender wheatgrass	Elymus trachycaulus	1.40	1.25	3.64%	3.18
switchgrass	Panicum virgatum	0.07	0.06	0.17%	0.30
little bluestem	Schizachyrium scoparium	0.69	0.62	1.79%	3.40
Indian grass	Sorghastrum nutans	1.12	1.00	2.89%	4.40
Total Grasses		8.97	8.00	23.14%	24.82
common yarrow	Achillea millefolium	0.03	0.03	0.09%	2.00
blue giant hyssop	Agastache foeniculum	0.11	0.10	0.28%	3.20
white snakeroot	Ageratina altissima	0.03	0.03	0.09%	1.70
white prairie clover	Dalea candida	0.19	0.17	0.50%	1.20
Canada tick trefoil	Desmodium canadense	0.16	0.14	0.42%	0.29
ox-eye	Helopsis helianthoides	0.15	0.13	0.38%	0.30
wild bergamot	Monarda fistulosa	0.07	0.06	0.18%	1.60
stiff goldenrod	Oligoneuron fidulum	0.07	0.06	0.17%	0.90
Clayton's sweet cicely	Osmorhiza claytonii	0.07	0.06	0.17%	0.06
smooth wild rose	Rosa blanda	0.07	0.06	0.17%	0.06
black-eyed susan	Rudbeckia hirta	0.20	0.18	0.52%	6.10
lance-leaved Figwort	Scrophularia lanceolata	0.06	0.05	0.14%	3.20
zigzag goldenrod	Solidago flexicaulis	0.02	0.02	0.05%	0.50
showy goldenrod	Solidago speciosa	0.07	0.06	0.18%	1.80
smooth aster	Symphotrichum laeve	0.07	0.06	0.19%	1.30
American vetch	Vicia americana	0.20	0.18	0.52%	0.14
golden alexanders	Zizia aurea	0.12	0.11	0.33%	0.46
Total Forbs		1.68	1.50	4.38%	24.80
Oats or winter wheat (see note at beginning of list for recommended dates)		28.02	25.00	72.48%	11.14
Total Cover Crop		28.02	25.00	72.48%	11.14
Totals:		38.67	34.50	100.00%	60.75

Purpose: Partly shaded grassland planting for native roadsides, reclamation, etc.
Planting Area: Tallgrass Aspen Parklands, Prairie Parkland, and Eastern Broadleaf Forest Provinces. Mn/DOT Districts 2(west), 3B, 4, Metro, 6, 7 & 8.

LANDSCAPE SCHEDULE

		SIZE	ROOT	QTY.
OVERSTORY TREES				
	Quercus bicolor	SWAMP WHITE OAK	2"	BB 28
	Acer X freemanii 'Jeffersred'	AUTUMN BLAZE MAPLE	2"	BB 24
	Tilia americana 'Boulevard'	BOULEVARD LINDEN	2"	BB 27
	Celtis occidentalis	HACKBERRY	2"	BB 39
	Gleditsia tricanthos var. inermis 'Skycole'	HONEYLOCUST	2"	BB 22
ORNAMENTAL TREES				
	Amelanchier	SERVICEBERRY multi stem	12'	BB 2
	Betula nigra	RIVER BIRCH multi stem	12'	BB -
	Malus 'Red Jewel'	RED JEWEL CRAB multi stem	1"	BB 5
CONIFEROUS TREES				
	Picea glauca densata	BLACK HILLS SPRUCE	6'	HT. 3
	Pinus nigra	AUSTRIAN PINE	6'	HT. -
	Pinus sylvestris	SCOTCH PINE	6'	HT. 7
SHRUBS				
	Viburnum lentago	NANNYBERRY VIBURNUM	24"	HT -
	Cornus sericea 'Cardinal'	CARDINAL DOGWOOD	24"	HT -
	Syringa vulgaris	COMMON PURPLE LILAC	24"	HT -



BENCHMARK

- Anoka County Benchmark No. 3076
Elev. = 890.186 (NAVD 88)
- Anoka County Benchmark No. 2078
Elev. = 899.499 (NAVD 88)

Carlson McCain
 • environmental
 • engineering
 • surveying

3890 Pheasant Ridge Drive NE,
 Suite 100
 Blaine, MN 55449
 Phone: (763) 489-7900
 Fax: (763) 489-7959
 www.carlsonmccain.com

I hereby certify that this plan, specification or report was prepared by me or under my direct supervision and that I am a duly Licensed Landscape Architect under the laws of the State of Minnesota

Print Name: Ryan J. Rutger
 Signature:

Drawn: SDB
 Designed: SDB
 Date: 04/13/18

Revisions:
 1. 5/24/17 Per City Comments
 2. 6/23/17 Per City Comments
 3. 4/13/18 Revise Street names, B12L15-28 & B13L1-13 & add NE Trail
 4. 6/13/18 Per City Comments
 5. 12/4/19 Revise Layout Per Owner

RIVERSTONE DEVELOPMENT, LLC.
 14015 Sunfish Lake B, Suite 400
 Ramsey, MN 55303

RIVERSTONE
 Ramsey, MN

LANDSCAPE PLAN