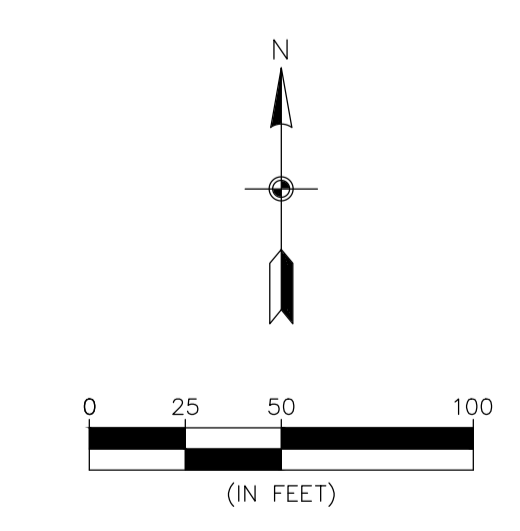


LANDSCAPE SCHEDULE

		SIZE	ROOT	QTY.
OVERSTORY TREES				
	Quercus bicolor	SWAMP WHITE OAK	2"	BB 12
	Acer X freemanii 'Jeffersred'	AUTUMN BLAZE MAPLE	2"	BB 25
	Tilia americana 'Boulevard'	BOULEVARD LINDEN	2"	BB 31
	Celtis occidentalis	HACKBERRY	2"	BB 22
	Gleditsia tricanthos var. inermis 'Skycole'	HONEYLOCUST	2"	BB 30
ORNAMENTAL TREES				
	Amelanchier	SERVICEBERRY multi stem	12"	BB 12
	Betula nigra	RIVER BIRCH multi stem	12"	BB 3
	Malus 'Red Jewel'	RED JEWEL CRAB multi stem	1"	BB 3
CONIFEROUS TREES				
	Picea glauca densata	BLACK HILLS SPRUCE	6"	HT. 6
	Pinus nigra	AUSTRIAN PINE	6"	HT. 8
	Pinus sylvestris	SCOTCH PINE	6"	HT. 11
SHRUBS				
	Viburnum lentago	NANNYBERRY VIBURNUM	24"	HT 7
	Cornus sericea 'Cardinal'	CARDINAL DOGWOOD	24"	HT 7
	Syringa vulgaris	COMMON PURPLE LILAC	24"	HT 14



BENCHMARK

1. Anoka County Benchmark No. 3076 Elev = 890.186 (NAVD 88)
2. Anoka County Benchmark No. 2078 Elev = 889.459 (NAVD 88)

Carlson McCain
 • environmental
 • engineering
 • surveying

3890 Pheasant Ridge Drive NE,
 Suite 100
 Blaine, MN 55449
 Phone: (763) 489-7900
 Fax: (763) 489-7959
 www.carlsonmccain.com

I hereby certify that this plan, specification or report was prepared by me or under my direct supervision and that I am a duly Licensed Landscape Architect under the laws of the State of Minnesota

Print Name: James A. Kalkes
 Signature: *James A. Kalkes*
 Date: 04/13/18 License #: 45071

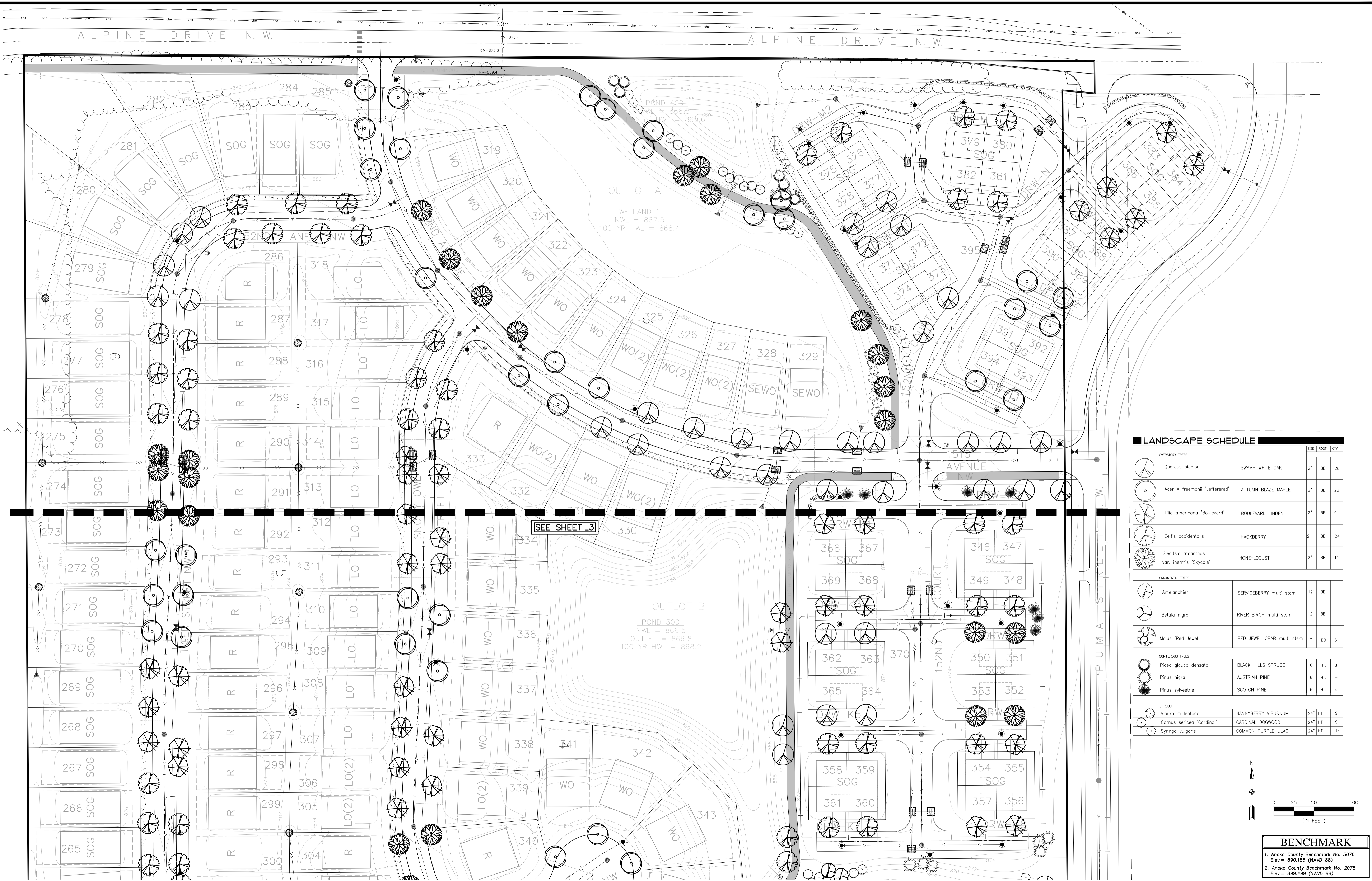
Drawn: SDB
 Designed: SDB
 Date: 04/13/18

Revisions:
 1. 5/24/17 Per City Comments
 2. 6/23/17 Per City Comments
 3. 4/13/18 Revise Street names, B12L15-28 & B13L1-13 and add NE Trail
 4. 6/13/18 Per City Comments

RIVERSTONE DEVELOPMENT, LLC.
 14015 Sunfish Lake B, Suite 400
 Ramsey, MN 55303

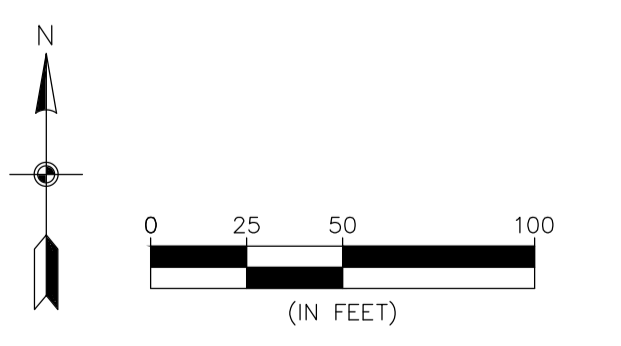
RIVERSTONE
 Ramsey, MN

**PRELIMINARY
 LANDSCAPE PLAN**



LANDSCAPE SCHEDULE

		SIZE	ROOT	QTY.
OVERSTORY TREES				
	Quercus bicolor	SWAMP WHITE OAK	2"	BB 28
	Acer X freemanii 'Jeffersred'	AUTUMN BLAZE MAPLE	2"	BB 23
	Tilia americana 'Boulevard'	BOULEVARD LINDEN	2"	BB 9
	Celtis occidentalis	HACKBERRY	2"	BB 24
	Gleditsia tricanthos var. inermis 'Skycolor'	HONEYLOCUST	2"	BB 11
ORNAMENTAL TREES				
	Amelanchier	SERVICEBERRY multi stem	12"	BB -
	Betula nigra	RIVER BIRCH multi stem	12"	BB -
	Malus 'Red Jewel'	RED JEWEL CRAB multi stem	1"	BB 3
CONIFEROUS TREES				
	Picea glauca densata	BLACK HILLS SPRUCE	6"	HT. 8
	Pinus nigra	AUSTRIAN PINE	6"	HT. -
	Pinus sylvestris	SCOTCH PINE	6"	HT. 4
SHRUBS				
	Viburnum lentago	NANNYBERRY VIBURNUM	24"	HT 9
	Cornus sericea 'Cardinal'	CARDINAL DOGWOOD	24"	HT 9
	Syringa vulgaris	COMMON PURPLE LILAC	24"	HT 14



BENCHMARK

- Anoka County Benchmark No. 3076
Elev. = 890.186 (NAVD 88)
- Anoka County Benchmark No. 2078
Elev. = 899.499 (NAVD 88)

Save Date: 06/01/18 | P:\jobs\6421 - 6440\6435 - ramsey site\cad_c3d\engineering\preliminary\6435_scp.dwg