

**LANDSCAPE SCHEDULE**

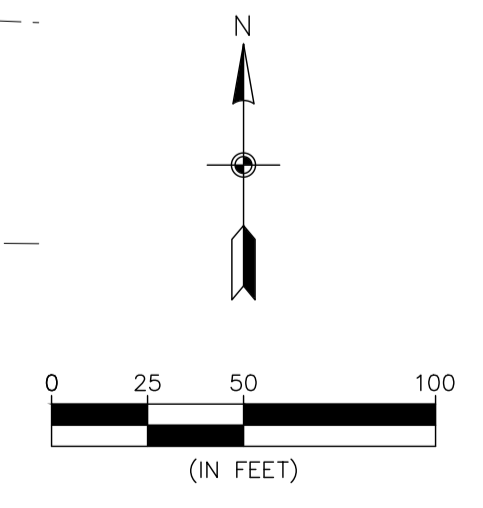
|                         |   |                           | SIZE | ROOT | QTY. |
|-------------------------|---|---------------------------|------|------|------|
| <b>OVERSTORY TREES</b>  |   |                           |      |      |      |
|                         | Quercus bicolor                             | SWAMP WHITE OAK           | 2"   | BB   | 12   |
|                         | Acer X freemanii 'Jeffersred'               | AUTUMN BLAZE MAPLE        | 2"   | BB   | 25   |
|                         | Tilia americana 'Boulevard'                 | BOULEVARD LINDEN          | 2"   | BB   | 27   |
|                         | Celtis occidentalis                         | HACKBERRY                 | 2"   | BB   | 20   |
|                         | Gleditsia tricanthos var. inermis 'Skycole' | HONEYLOCUST               | 2"   | BB   | 30   |
| <b>ORNAMENTAL TREES</b> |   |                           |      |      |      |
|                         | Amelanchier                                 | SERVICEBERRY multi stem   | 12"  | BB   | 12   |
|                         | Betula nigra                                | RIVER BIRCH multi stem    | 12"  | BB   | -    |
|                         | Malus 'Red Jewel'                           | RED JEWEL CRAB multi stem | 1"   | BB   | 3    |
| <b>CONIFEROUS TREES</b> |   |                           |      |      |      |
|                         | Picea glauca densata                        | BLACK HILLS SPRUCE        | 6"   | HT.  | 6    |
|                         | Pinus nigra                                 | AUSTRIAN PINE             | 6"   | HT.  | 5    |
|                         | Pinus sylvestris                            | SCOTCH PINE               | 6"   | HT.  | 2    |
| <b>SHRUBS</b>           |   |                           |      |      |      |
|                         | Viburnum lentago                            | NANNYBERRY VIBURNUM       | 24"  | HT   | 7    |
|                         | Cornus sericea 'Cardinal'                   | CARDINAL DOGWOOD          | 24"  | HT   | 7    |
|                         | Syringa vulgaris                            | COMMON PURPLE LILAC       | 24"  | HT   | 14   |

INFILTRATION BASIN #20  
 NWL = 866.5  
 100 YR HWL = 868.7  
 OUTLET EL = 867.0  
 BOTTOM EL = 866.0  
 AREA = 38,950 S.F.  
 (INSTALL SILT FENCE  
 AFTER GRADING) (TYP)  
 (SEE 02020300) (TYP)

POND 200  
 NWL = 866.5  
 OUTLET = 866.8

POND 100  
 NWL = 866.8  
 OUTLET = 866.8  
 100 YR HWL = 868.0

OUTLET D  
 POND 300  
 NWL = 866.5  
 OUTLET = 866.8  
 100 YR HWL = 868.2



**BENCHMARK**  
 1. Anoka County Benchmark No. 3076  
 Elev = 890.186 (NAVD 88)  
 2. Anoka County Benchmark No. 2078  
 Elev = 899.499 (NAVD 88)

**Carlson McCain**  
 • environmental  
 • engineering  
 • surveying

3890 Pheasant Ridge Drive NE,  
 Suite 100  
 Blaine, MN 55449  
 Phone: (763) 489-7900  
 Fax: (763) 489-7959  
 www.carlsonmccain.com

I hereby certify that this plan, specification or report was prepared by me or under my direct supervision and that I am a duly Licensed Landscape Architect under the laws of the State of Minnesota

Print Name: Ryan J. Rutger  
 Signature:   
 Date: 12/04/19 License #: 56346

Drawn: SDB  
 Designed: SDB  
 Date: 04/13/18

Revisions:  
 1. 5/24/17 Per City Comments  
 2. 6/23/17 Per City Comments  
 3. 4/13/18 Revise Street names, B12L15-28 & B13L1-13 & add NE Trail  
 4. 6/13/18 Per City Comments  
 5. 12/4/19 Revise Layout Per Owner

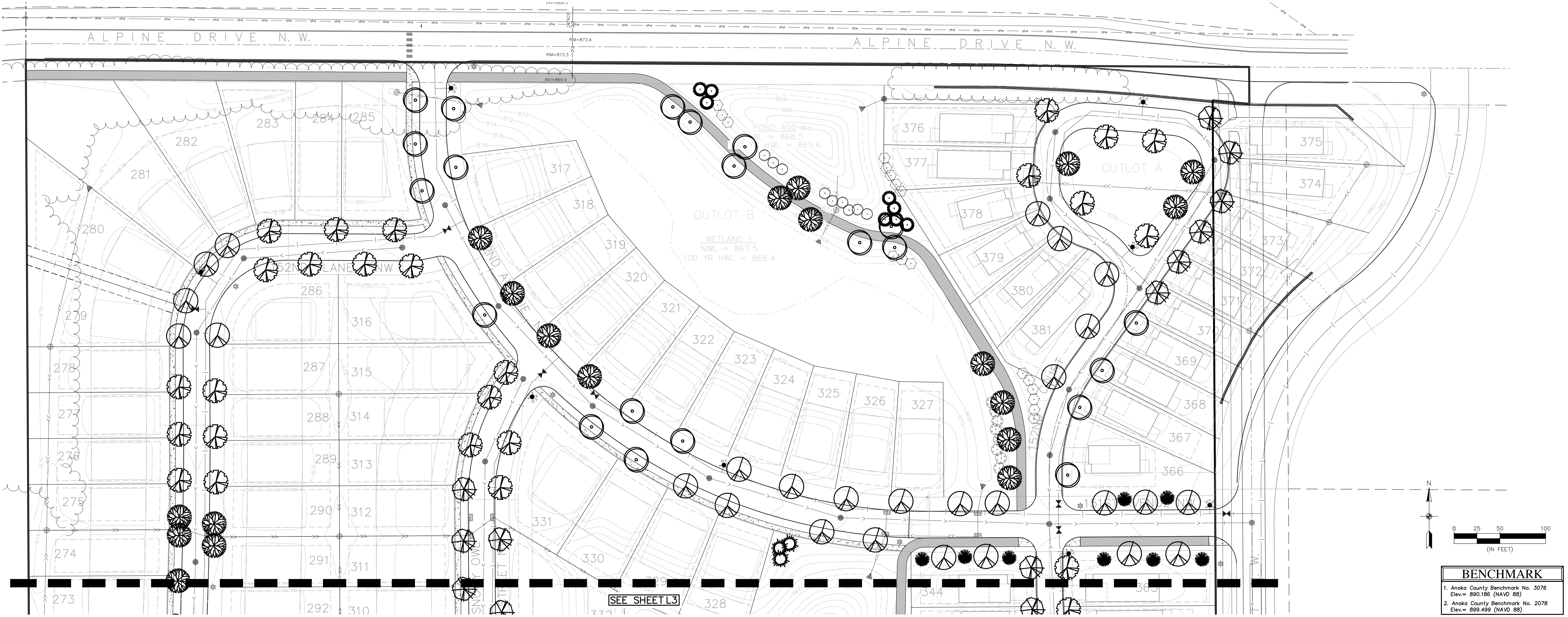
**RIVERSTONE DEVELOPMENT, LLC.**  
 14015 Sunfish Lake B, Suite 400  
 Ramsey, MN 55303

**RIVERSTONE**  
 Ramsey, MN

**PRELIMINARY  
 LANDSCAPE PLAN**

**LANDSCAPE SCHEDULE**

|                         |   |                           | SIZE | ROOT | QTY. |
|-------------------------|---|---------------------------|------|------|------|
| <b>OVERSTORY TREES</b>  |   |                           |      |      |      |
|                         | Quercus bicolor                             | SWAMP WHITE OAK           | 2"   | BB   | 27   |
|                         | Acer X freemanii 'Jeffersred'               | AUTUMN BLAZE MAPLE        | 2"   | BB   | 21   |
|                         | Tilia americana 'Boulevard'                 | BOULEVARD LINDEN          | 2"   | BB   | 10   |
|                         | Celtis occidentalis                         | HACKBERRY                 | 2"   | BB   | 25   |
|                         | Gleditsia tricanthos var. inermis 'Skycole' | HONEYLOCUST               | 2"   | BB   | 19   |
| <b>ORNAMENTAL TREES</b> |   |                           |      |      |      |
|                         | Amelanchier                                 | SERVICEBERRY multi stem   | 12'  | BB   | -    |
|                         | Betula nigro                                | RIVER BIRCH multi stem    | 12'  | BB   | -    |
|                         | Malus 'Red Jewel'                           | RED JEWEL CRAB multi stem | 1"   | BB   | -    |
| <b>CONIFEROUS TREES</b> |   |                           |      |      |      |
|                         | Picea glauca densata                        | BLACK HILLS SPRUCE        | 6'   | HT.  | 8    |
|                         | Pinus nigra                                 | AUSTRIAN PINE             | 6'   | HT.  | 3    |
|                         | Pinus sylvestris                            | SCOTCH PINE               | 6'   | HT.  | 8    |
| <b>SHRUBS</b>           |   |                           |      |      |      |
|                         | Viburnum lentago                            | NANNYBERRY VIBURNUM       | 24"  | HT   | -    |
|                         | Cornus sericea 'Cardinal'                   | CARDINAL DOGWOOD          | 24"  | HT   | 17   |
|                         | Syringa vulgaris                            | COMMON PURPLE LILAC       | 24"  | HT   | 17   |



SEE SHEET L3

**BENCHMARK**  
 1. Anoka County Benchmark No. 3076  
 Elev. = 890.186 (NAVD 88)  
 2. Anoka County Benchmark No. 2078  
 Elev. = 899.499 (NAVD 88)

**Carlson McCain**  
 • environmental engineering • surveying  
 3890 Pheasant Ridge Drive NE, Suite 100  
 Blaine, MN 55449  
 Phone: (763) 489-7900  
 Fax: (763) 489-7959  
 www.carlsonmccain.com

I hereby certify that this plan, specification or report was prepared by me or under my direct supervision and that I am a duly Licensed Landscape Architect under the laws of the State of Minnesota  
 Print Name: Ryan J. Ruttger  
 Signature:   
 Date: 12/04/19 License #: 56346

Drawn: SDB  
 Designed: SDB  
 Date: 04/13/18  
 Revisions:  
 1. 5/24/17 Per City Comments  
 2. 6/23/17 Per City Comments  
 3. 4/13/18 Revise Street names, B12L15-28 & B13L1-13 & add NE Trail  
 4. 6/13/18 Per City Comments  
 5. 12/4/19 Revise Layout Per Owner

**RIVERSTONE DEVELOPMENT, LLC.**  
 14015 Sunfish Lake B, Suite 400  
 Ramsey, MN 55303

**RIVERSTONE**  
 Ramsey, MN

**PRELIMINARY LANDSCAPE PLAN**

L4 of 5

Save Date: 12/06/19 | P:\jobs\6421 - 6440\6435 - Ramsey site\cad\c3r\6435\_top.dwg