

DRAWING NAME	NO.	BY	DATE	REVISIONS
TREE SURVEY				
DRAWN BY				
CHECKED BY				
DATE				
03/05/20				

USE (INCLUDING COPYING, DISTRIBUTION, AND/OR CONVEYANCE OF INFORMATION) OF THIS PRODUCT IS STRICTLY PROHIBITED WITHOUT SATHRE-BERGQUIST, INC.'S EXPRESS WRITTEN AUTHORIZATION. USE WITHOUT SAID AUTHORIZATION CONSTITUTES AN ILLEGITIMATE USE AND SHALL THEREBY INDEMNIFY SATHRE-BERGQUIST, INC. OF ALL RESPONSIBILITY. SATHRE-BERGQUIST, INC. RESERVES THE RIGHT TO HOLD ANY ILLEGITIMATE USER OR PARTY LEGALLY RESPONSIBLE FOR DAMAGES OR LOSSES RESULTING FROM ILLEGITIMATE USE.

I HEREBY CERTIFY THAT THIS PLAN OR SPECIFICATION WAS PREPARED BY ME OR UNDER MY DIRECT SUPERVISION AND THAT I AM A DULY REGISTERED PROFESSIONAL ENGINEER UNDER THE LAWS OF THE STATE OF MINNESOTA.

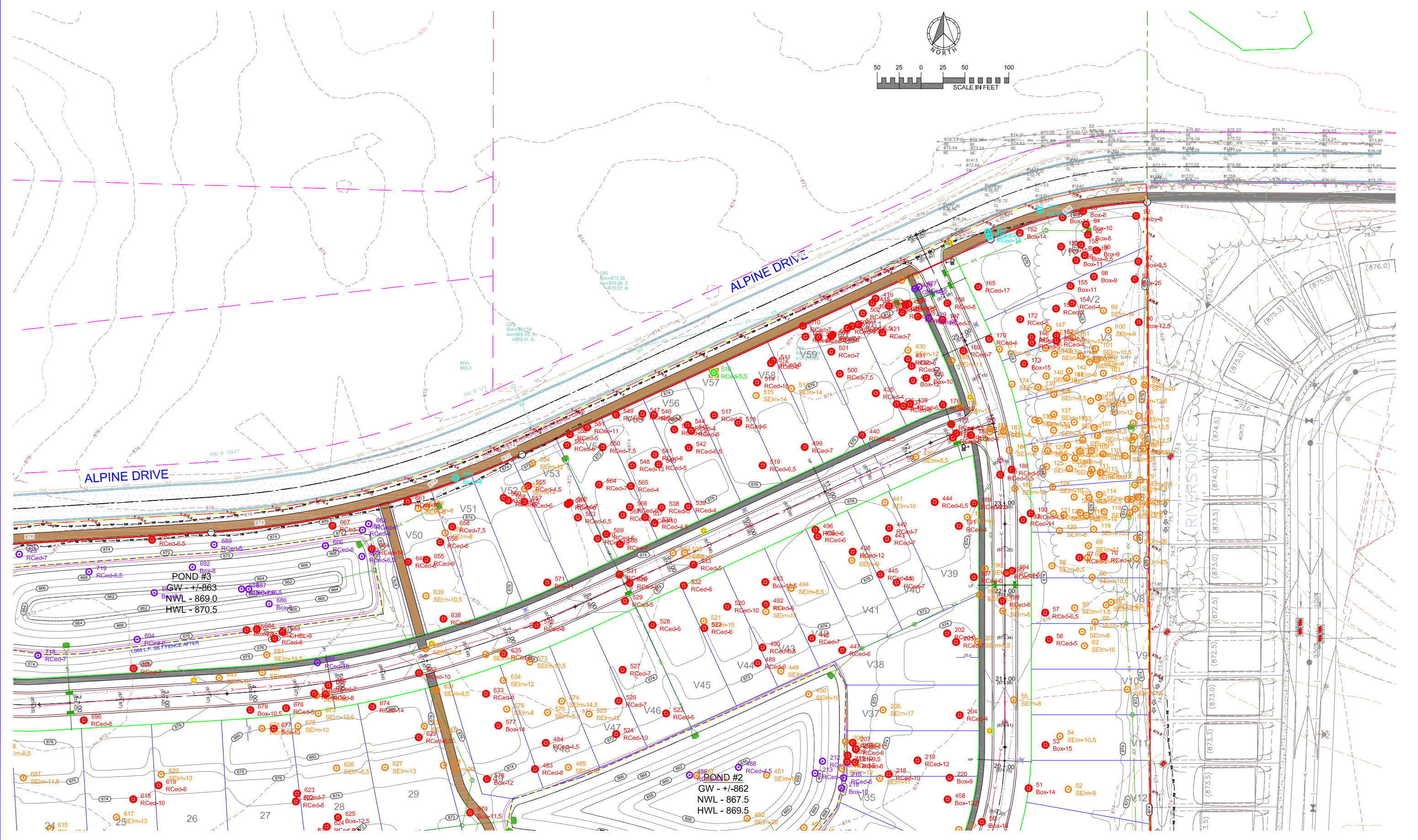
Eric R. Johnson
 ERIC R. JOHNSON, P.E.
 Date: 03/05/20 Lic. No. 56659

SATHRE-BERGQUIST, INC.
 150 SOUTH BROADWAY WAYZATA, MN. 55391 (952) 476-6000

CITY PROJECT NO. ---
RAMSEY, MINNESOTA

TREE SURVEY
THE PRESERVE AT NORTHFORK
BK LAND DEVELOPMENT

FILE NO. 10945-003
TS1
TS5



DRAWING NAME	NO.	BY	DATE	REVISIONS
TREE SURVEY				
DRAWN BY				
CHECKED BY				
DATE				
03/05/20				

USE (INCLUDING COPYING, DISTRIBUTION, AND/OR CONVEYANCE OF INFORMATION) OF THIS PRODUCT IS STRICTLY PROHIBITED WITHOUT SATHRE-BERGQUIST, INC.'S EXPRESS WRITTEN AUTHORIZATION. USE WITHOUT SAID AUTHORIZATION CONSTITUTES AN ILLEGITIMATE USE AND SHALL THEREBY INDEMNIFY SATHRE-BERGQUIST, INC. OF ALL RESPONSIBILITY. SATHRE-BERGQUIST, INC. RESERVES THE RIGHT TO HOLD ANY ILLEGITIMATE USER OR PARTY LEGALLY RESPONSIBLE FOR DAMAGES OR LOSSES RESULTING FROM ILLEGITIMATE USE.

I HEREBY CERTIFY THAT THIS PLAN OR SPECIFICATION WAS PREPARED BY ME OR UNDER MY DIRECT SUPERVISION AND THAT I AM A DULY REGISTERED PROFESSIONAL ENGINEER UNDER THE LAWS OF THE STATE OF MINNESOTA.

Eric R. Johnson
 ERIC R. JOHNSON, P.E.
 Date: 03/05/20 Lic. No. 56659

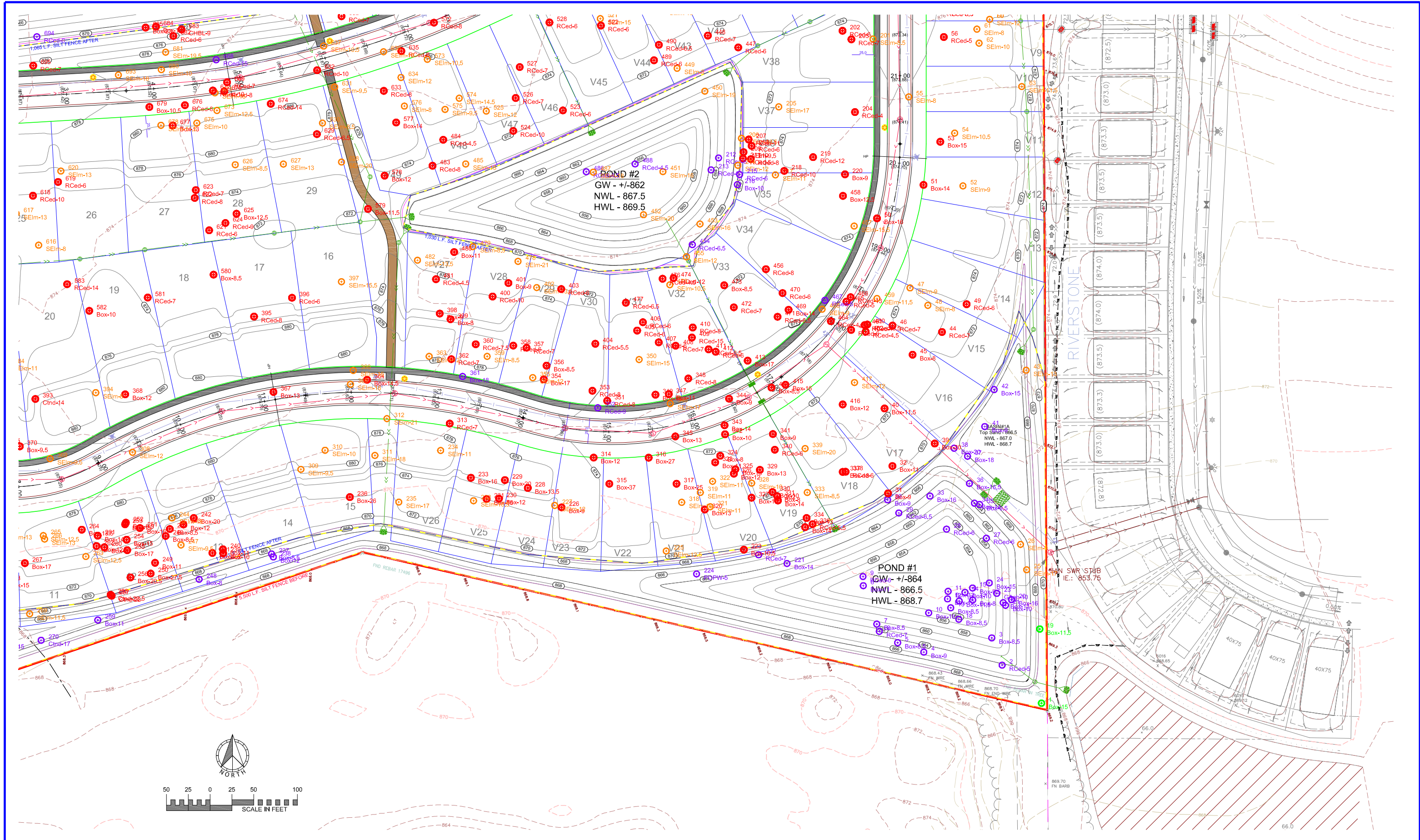
SATHRE-BERGQUIST, INC.
 150 SOUTH BROADWAY WAYZATA, MN. 55391 (952) 476-6000

CITY PROJECT NO.

RAMSEY, MINNESOTA

TREE SURVEY
THE PRESERVE AT NORTHFORK
BK LAND DEVELOPMENT

FILE NO.
 10945-003
TS2
TS5



PROJECT NAME AND NUMBER

DRAWING NAME	NO.	BY	DATE	REVISIONS
TREE SURVEY				
DRAWN BY				
CHECKED BY				
DATE				
03/05/20				

USE (INCLUDING COPYING, DISTRIBUTION, AND/OR CONVEYANCE OF INFORMATION) OF THIS PRODUCT IS STRICTLY PROHIBITED WITHOUT SATHRE-BERGQUIST, INC.'S EXPRESS WRITTEN AUTHORIZATION. USE WITHOUT SAID AUTHORIZATION CONSTITUTES AN ILLEGITIMATE USE AND SHALL THEREBY INDEMNIFY SATHRE-BERGQUIST, INC. OF ALL RESPONSIBILITY. SATHRE-BERGQUIST, INC. RESERVES THE RIGHT TO HOLD ANY ILLEGITIMATE USER OR PARTY LEGALLY RESPONSIBLE FOR DAMAGES OR LOSSES RESULTING FROM ILLEGITIMATE USE.

I HEREBY CERTIFY THAT THIS PLAN OR SPECIFICATION WAS PREPARED BY ME OR UNDER MY DIRECT SUPERVISION AND THAT I AM A DULY REGISTERED PROFESSIONAL ENGINEER UNDER THE LAWS OF THE STATE OF MINNESOTA.

Eric R. Johnson
 ERIC R. JOHNSON, P.E.
 Date: 03/05/20 Lic. No. 56659

ENGINEERS SURVEYORS
 DESIGNERS PLANNERS

SATHRE-BERGQUIST, INC.
 150 SOUTH BROADWAY WAYZATA, MN. 55391 (952) 476-6000

CITY PROJECT NO.
 --

RAMSEY, MINNESOTA

TREE SURVEY
THE PRESERVE AT NORTHFORK
BK LAND DEVELOPMENT

FILE NO.
 10945-003

TS3
TS5

Tree #	Species	DBH	Saved	Removed	Exempt	Offsite	Invasive	Tree #	Species	DBH	Saved	Removed	Exempt	Offsite	Invasive	Tree #	Species	DBH	Saved	Removed	Exempt	Offsite	Invasive	Tree #	Species	DBH	Saved	Removed	Exempt	Offsite	Invasive	Tree #	Species	DBH	Saved	Removed	Exempt	Offsite	Invasive
1	Boxelder	15.0	15.0					101	Elm, Siberian	10.5						201	Elm, Siberian	8.5						301	Boxelder	15.0	15.0				401	Boxelder	9.0		9.0				
2	Redcedar	5.0			5.0			102	Elm, Siberian	9.0						202	Redcedar	9.0		6.0				302	Boxelder	15.0	15.0				402	Elm, Siberian	13.5					13.5	
3	Boxelder	8.5			8.5			103	Elm, Siberian	8.0						203	Redcedar	7.0		7.0				303	Boxelder	14.0	14.0				403	Redcedar	6.0		6.0				
4	Boxelder	9.0			9.0			104	Elm, Siberian	8.5						204	Redcedar	4.0		4.0				304	Elm, Siberian	16.0					404	Redcedar	5.5		5.5			16.0	
5	Boxelder	8.5			8.5			105	Elm, Siberian	13.5						205	Elm, Siberian	17.0					17.0	305	Redcedar	6.0	6.0				405	Redcedar	6.0		6.0				
6	Redcedar	7.0			7.0			106	Elm, Siberian	12.0						206	Elm, Siberian	10.5					10.5	306	Elm, Siberian	9.0			9.0	406	Redcedar	6.0		6.0					
7	Boxelder	8.5			8.5			107	Elm, Siberian	8.5						207	Redcedar	11.0		11.0				307	Elm, Siberian	13.0	13.0			13.0	407	Redcedar	6.0		6.0				
8	Boxelder	11.0			11.0			108	Elm, Siberian	18.0						208	Redcedar	6.0		6.0				308	Elm, Siberian	12.0	12.0			12.0	408	Redcedar	7.0		7.0				
9	Redcedar	6.0			6.0			109	Elm, Siberian	8.5						209	Elm, American	9.5					9.5	309	Elm, Siberian	9.5	9.5			9.5	409	Redcedar	15.0		15.0				
10	Boxelder	18.0			18.0			110	Elm, Siberian	8.0						210	Redcedar	8.0		8.0				310	Elm, Siberian	10.0	10.0			10.0	410	Redcedar	8.0		8.0				
11	Boxelder	12.0			12.0			111	Elm, Siberian	8.0						211	Redcedar	5.0		5.0				311	Elm, Siberian	18.0	18.0			18.0	411	Redcedar	6.5		6.5				
12	Boxelder	19.0			19.0			112	Elm, Siberian	10.5						212	Redcedar	6.0			6.0			312	Elm, Siberian	21.0	21.0			21.0	412	Redcedar	6.0		6.0				
13	Boxelder	8.5			8.5			113	Elm, Siberian	12.0						213	Redcedar	9.0			9.0			313	Redcedar	7.0	7.0			7.0	413	Boxelder	17.0		17.0				
14	Boxelder	10.0			10.0			114	Elm, Siberian	11.0						214	Elm, Siberian	12.0					12.0	314	Boxelder	12.0	12.0			12.0	414	Boxelder	8.5		8.5				
15	Boxelder	9.5			9.5			115	Elm, Siberian	8.5						215	Redcedar	6.0		6.0				315	Boxelder	37.0	37.0			37.0	415	Boxelder	16.0		16.0				
16	Boxelder	11.5			11.5			116	Elm, Siberian	8.0						216	Boxelder	10.0			10.0			316	Boxelder	27.0	27.0			27.0	416	Boxelder	12.0		12.0				
17	Boxelder	8.0			8.0			117	Elm, Siberian	14.0						217	Elm, Siberian	11.0					11.0	317	Boxelder	25.0	25.0			25.0	417	Elm, Siberian	12.0					12.0	
18	Boxelder	8.5			8.5			118	Elm, Siberian	8.0						218	Redcedar	10.0		10.0				318	Elm, Siberian	16.0	16.0			16.0	418	Redcedar	9.5		9.5				
19	Boxelder	11.5	11.5					119	Elm, Siberian	13.5						219	Redcedar	12.0		12.0				319	Elm, Siberian	11.0	11.0			11.0	419	Redcedar	7.5		7.5				
20	Boxelder	16.0			16.0			120	Elm, Siberian	8.0						220	Boxelder	9.0		9.0				320	Boxelder	13.0	13.0			13.0	420	Redcedar	6.5		6.5				
21	Boxelder	10.0			10.0			121	Elm, Siberian	9.5						221	Boxelder	14.0					14.0	321	Elm, Siberian	11.0	11.0			11.0	421	Redcedar	7.0		7.0				
22	Boxelder	11.0			11.0			122	Elm, Siberian	14.5						222	Redcedar	7.0			7.0			322	Elm, Siberian	11.0	11.0			11.0	422	Redcedar	7.0		7.0				
23	Ash, green	10.0			10.0			123	Elm, Siberian	8.5						223	Boxelder	10.5		10.5				323	Boxelder	11.0	11.0			11.0	423	Redcedar	6.0		6.0				
24	Boxelder	15.0			15.0			124	Elm, Siberian	10.0						224	POPW	5.0			5.0			324	Boxelder	8.0	8.0			8.0	424	Redcedar	6.0		6.0				
25	Elm, Siberian	17.0				17.0		125	Elm, Siberian	15.0						225	Elm, Siberian	12.5					12.5	325	Boxelder	13.0	13.0			13.0	425	Elm, Siberian	15.0					15.0	
26	Elm, Siberian	9.0				9.0		126	Elm, Siberian	14.0						226	Boxelder	9.0		9.0				326	Boxelder	12.0	12.0			12.0	426	Ash, green	9.0				9.0		
27	Redcedar	6.0			6.0			127	Elm, Siberian	8.0						227	Elm, Siberian	12.0					12.0	327	Boxelder	13.0	13.0			13.0	427	Redcedar	5.0		5.0				
28	Redcedar	6.0			6.0			128	Elm, Siberian	8.0						228	Boxelder	13.5		13.5				328	Elm, Siberian	10.0	10.0			10.0	428	Redcedar	6.0				6.0		
29	Redcedar	6.5			6.5			129	Elm, Siberian	11.5						229	Boxelder	20.0		20.0				329	Boxelder	13.0	13.0			13.0	429	Redcedar	6.0				6.0		
30	Boxelder	9.0			9.0			130	Elm, Siberian	13.0						230	Boxelder	12.0		12.0				330	Boxelder	10.0	10.0			10.0	430	Elm, Siberian	12.0					12.0	
31	Boxelder	9.0			9.0			131	Elm, Siberian	10.0						231	Boxelder	15.0		15.0				331	Boxelder	8.0	8.0			8.0	431	Redcedar	6.0		6.0				
32	Boxelder	11.0			11.0			132	Elm, Siberian	15.0						232	Elm, Siberian	16.5					16.5	332	Boxelder	14.0	14.0			14.0	432	Redcedar	7.0		7.0				
33	Boxelder	16.0			16.0			133	Elm, Siberian	9.0						233	Boxelder	16.0		16.0				333	Elm, Siberian	8.5	8.5			8.5	433	Boxelder	10.0		10.0				
34	Boxelder	14.0			14.0			134	Elm, Siberian	8.5						234	Elm, Siberian	11.0					11.0	334	Boxelder	13.0	13.0			13.0	434	Boxelder	12.0		12.0				
35	Boxelder	9.5			9.5			135	Elm, Siberian	16.0						235	Elm, Siberian	17.0					17.0	335	Boxelder	14.0	14.0			14.0	435	Redcedar	4.0		4.0				
36	Boxelder	16.5			16.5			136	Elm, Siberian	13.0						236	Boxelder	26.0		26.0				336	Redcedar	5.5	5.5			5.5	436	Boxelder	13.0		13.0				
37	Boxelder	18.0			18.0			137	Elm, Siberian	19.0						237	Boxelder	8.5			8.5			337	Boxelder	18.0	18.0			18.0	437	Redcedar	8.0		8.0				
38	Boxelder	20.0			20.0			138	Elm, Siberian	8.5						238	Boxelder	12.0					12.0	338	Redcedar	6.0	6.0			6.0	438	Redcedar	6.5		6.5				
39	Boxelder	20.0			20.0			139	Elm, Siberian	8.5						239	Boxelder	10.0		10.0				339	Elm, Siberian	20.0	20.0			20.0	439	Elm, Siberian	8.5					8.5	
40	Boxelder	11.5			11.5			140	Elm, Siberian	18.0						240	Boxelder	11.0		11.0				340	Redcedar	6.0	6.0			6.0	440	Redcedar	6.5		6.5				
41	Boxelder	9.0			9.0			141	Elm, Siberian	19.0						241	Boxelder	9.5		9.5				341	Boxelder	9.0	9.0			9.0	441	Elm, Siberian	10.0					10.0	
42	Boxelder	15.0			15.0			142	Elm, Siberian	9.0						242	Boxelder	20.0		20.0				342	Boxelder	10.0	10.0			10.0	442	Redcedar	7.0		7.0				
43	Elm, Siberian	13.0				13.0		143	Elm, Siberian	12.0						243	Boxelder	12.0		12.0				343	Boxelder	14.0	14.0			14.0	443	Redcedar	7.0		7.0				
44	Redcedar	7.0			7.0			144	Elm, Siberian	9.5						244	Elm, Siberian	18.0					18.0	344	Boxelder	9.0	9.0			9.0	444	Redcedar	6.5		6.5				
45	Boxelder	8.0			8.0			145	Redcedar	5.0			5.0			245	Boxelder	8.5		8.5				345	Boxelder	13.0	13.0			13.0	445	Redcedar	11.0		11.0				
46	Redcedar	7.0			7.0			146	Redcedar	9.0			9.0			246	Boxelder	8.5		8.5				346	Elm, Siberian	17.0	17.0			17.0	446	Redcedar	7.0		7.0				
47	Elm, Siberian	9.0				9.0		147	Elm, Siberian	14.5						247	Elm, Siberian	9.5					9.5	347	Boxelder	11.0	11.0			11.0	447	Redcedar	6.0		6.0				
48	Elm, Siberian	8.0				8.0		148	Redcedar	4.0			4.0			248	Boxelder	8.0					8.0	348	Redcedar	8.0	8.0			8.0	448	Redcedar	7.0		7.0				
49	Redcedar	6.0			6.0			149	Elm, Siberian	10.5						249	Boxelder	11.0		11.0				349	Boxelder	16.0	16.0			16.0	449	Elm, Siber							

Tree #	Species	DBH	Saved	Removed	Exempt	Offsite	Invasive	Tree #	Species	DBH	Saved	Removed	Exempt	Offsite	Invasive	Tree #	Species	DBH	Saved	Removed	Exempt	Offsite	Invasive
501	Redcedar	7.0		7.0				601	Cottonwood	11.5		11.5				701	Elm, Siberian	11.5					11.5
502	Redcedar	8.0		8.0				602	Cottonwood	13.5		13.5				702	Boxelder	12.0		12.0			
503	Redcedar	6.5		6.5				603	Cottonwood	14.0		14.0				703	Boxelder	13.5		13.5			
504	Redcedar	5.5		5.5				604	Cottonwood	36.0		36.0				704	Ash, green	10.5		10.5			
505	Redcedar	9.0		9.0				605	Elm, Siberian	12.5					12.5	705	Boxelder	20.0		20.0			
506	Redcedar	7.0		7.0				606	Elm, Siberian	19.5					19.5	706	Elm, Siberian	10.0					10.0
507	Redcedar	6.0		6.0				607	Elm, Siberian	18.0					18.0	707	Elm, Siberian	11.0					11.0
508	Redcedar	7.0		7.0				608	Elm, Siberian	12.0					12.0	708	Elm, American	8.5		8.5			
509	Redcedar	6.0		6.0				609	Elm, Siberian	19.0					19.0	709	Ash, green	11.0		11.0			
510	Redcedar	7.0		7.0				610	Boxelder	12.0		12.0				710	Boxelder	10.0		10.0			
511	Redcedar	6.0		6.0				611	Boxelder	14.0		14.0				711	Boxelder	11.0		11.0			
512	Redcedar	8.0		8.0				612	Elm, Siberian	8.5					8.5	712	Boxelder	16.0		16.0			
513	Elm, Siberian	14.0					14.0	613	Elm, Siberian	9.0					9.0	713	Boxelder	11.0		11.0			
514	Redcedar	16.0		16.0				614	Elm, Siberian	8.0					8.0	714	Elm, Siberian	12.0					12.0
515	Elm, Siberian	14.0					14.0	615	Elm, Siberian	12.5					12.5	715	Redcedar	10.0		10.0			
516	Redcedar	5.5	5.5					616	Elm, Siberian	8.0					8.0	716	Redcedar	4.5		4.5			
517	Redcedar	8.0		8.0				617	Elm, Siberian	13.0					13.0	717	Boxelder	14.0		14.0			
518	Redcedar	6.0		6.0				618	Redcedar	10.0		10.0				718	Redcedar	7.0				7.0	
519	Redcedar	6.5		6.5				619	Redcedar	6.0		6.0				719	Redcedar	6.5				6.5	
520	Redcedar	10.0		10.0				620	Elm, Siberian	13.0					13.0	720	Boxelder	9.5		9.5			
521	Elm, Siberian	15.0					15.0	621	Redcedar	6.0		6.0				721	Boxelder	10.0		10.0			
522	Redcedar	6.0		6.0				622	Redcedar	8.0		8.0				722	Elm, Siberian	9.0					9.0
523	Redcedar	6.0		6.0				623	Redcedar	7.0		7.0				723	Redcedar	7.0				7.0	
524	Redcedar	10.0		10.0				624	Redcedar	9.0		9.0				724	Redcedar	7.0		7.0			
525	Elm, Siberian	12.0					12.0	625	Boxelder	12.5		12.5				725	Elm, Siberian	14.0					14.0
526	Redcedar	7.0		7.0				626	Elm, Siberian	8.5					8.5	726	Redcedar	5.0		5.0			
527	Redcedar	7.0		7.0				627	Elm, Siberian	13.0					13.0	727	Redcedar	10.5		10.5			
528	Redcedar	6.0		6.0				628	Elm, Siberian	20.0					20.0	728	Redcedar	6.0		6.0			
529	Redcedar	5.0		5.0				629	Redcedar	6.5		6.5				729	Elm, Siberian	21.0					21.0
530	Redcedar	6.0		6.0				630	Elm, Siberian	8.5					8.5	730	Redcedar	5.0		5.0			
531	Redcedar	6.0		6.0				631	Elm, Siberian	9.5					9.5	731	Elm, Siberian	22.0					22.0
532	Redcedar	6.0		6.0				632	Redcedar	10.0		10.0				732	Elm, Siberian	11.0					11.0
533	Redcedar	5.0		5.0				633	Redcedar	8.0		8.0				733	Elm, Siberian	18.0					18.0
534	Elm, Siberian	10.0					10.0	634	Elm, Siberian	12.0					12.0	734	Redcedar	8.0		8.0			
535	Elm, Siberian	9.0					9.0	635	Redcedar	8.0		8.0				735	Redcedar	8.0					8.0
536	Redcedar	4.5		4.5				636	Elm, Siberian	16.0					16.0	Total DBH (in.) 8001.0 Tree Count 735 4 394 97 5 235							
537	Redcedar	10.0		10.0				637	Elm, Siberian	10.5					10.5								
538	Redcedar	5.0		5.0				638	Redcedar	7.0		7.0				Total Calliper Inches 8001.0 Exempt/Invasive Calliper Inches 4030.5 Offsite Calliper Inches 75.0 Net Calliper Inches 3895.5 60% Removal Limit 2337.3 Proposed Removal 3855.5 99.0% Required Reforestation 1518.2 Replacement Inches (1.25") 1897.8							
539	Redcedar	4.0		4.0				639	Elm, Siberian	10.5					10.5								
540	Redcedar	5.0		5.0				640	Redcedar	6.0		6.0											
541	Redcedar	6.0		6.0				641	Redcedar	5.0		5.0											
542	Redcedar	6.5		6.5				642	Redcedar	7.0		7.0											
543	Redcedar	4.5		4.5				643	Ash, green	13.0		13.0											
544	Redcedar	4.0		4.0				644	Ash, green	11.5		11.5											
545	Redcedar	6.0		6.0				645	Redcedar	7.0		7.0											
546	Redcedar	8.0		8.0				646	Boxelder	15.0		15.0											
547	Redcedar	8.0		8.0				647	Boxelder	15.0		15.0											
548	Redcedar	13.0		13.0				648	Boxelder	13.0		13.0											
549	Redcedar	8.0		8.0				649	Elm, Siberian	11.0					11.0								
550	Redcedar	7.5		7.5				650	Elm, Siberian	16.0					16.0								
551	Redcedar	11.0		11.0				651	Redcedar	6.0		6.0											
552	Redcedar	5.0		5.0				652	Redcedar	6.5		6.5											
553	Redcedar	6.0		6.0				653	Elm, Siberian	18.0					18.0								
554	Elm, Siberian	12.0					12.0	654	Boxelder	11.0		11.0											
555	Redcedar	4.5		4.5				655	Redcedar	9.0		9.0											
556	Elm, Siberian	14.0					14.0	656	Redcedar	6.0		6.0											
557	Redcedar	6.0		6.0				657	Elm, Siberian	8.0					8.0								
558	Redcedar	6.0		6.0				658	Redcedar	7.5		7.5											
559	Boxelder	44.0					44.0	659	Elm, Siberian	8.0					8.0								
560	Aspen	9.5		9.5				660	Elm, Siberian	8.0					8.0								
561	Redcedar	6.0		6.0				661	Redcedar	10.0		10.0											
562	Redcedar	7.0		7.0				662	Redcedar	6.0					6.0								
563	Redcedar	6.5		6.5				663	Redcedar	4.0					4.0								
564	Redcedar	7.0		7.0				664	Redcedar	14.0		14.0											
565	Redcedar	4.0		4.0				665	Redcedar	6.5					6.5								
566	Redcedar	6.0		6.0				666	Redcedar	6.0					6.0								
567	Redcedar	6.0		6.0				667	Redcedar	7.0		7.0											
568	Redcedar	7.0		7.0				668	Redcedar	15.0					15.0								
569	Redcedar	6.0		6.0				669	Redcedar	7.0		7.0											
570	Redcedar	19.0		19.0				670	Redcedar	8.0		8.0											
571	Boxelder	11.0		11.0				671	Elm, Siberian	16.0					16.0								
572	Redcedar	8.0		8.0				672	Redcedar	10.0		10.0											
573	Elm, Siberian	10.5					10.5	673	Elm, Siberian	12.5					12.5								
574	Elm, Siberian	14.5					14.5	674	Redcedar	14.0		14.0											
575	Elm, Siberian	9.5					9.5	675	Elm, Siberian	10.0					10.0								
576	Elm, Siberian	8.0					8.0	676	Redcedar	8.0		8.0											
577	Boxelder	14.0		14.0				677	Boxelder	13.0		13.0											
578	Boxelder	12.0		12.0				678	Elm, Siberian	11.5					11.5								
579	Boxelder	11.5		11.5				679	Boxelder	10.5		10.5											
580	Boxelder	8.5		8.5				680	Elm, Siberian	10.0					10.0								
581	Redcedar	7.0		7.0				681	Elm, Siberian	19.5					19.5								
582	Boxelder	10.0		10.0				682	Redcedar	6.0		6.0											
583	Redcedar	14.0		14.0				683	CHBL	9.0		9.0											
584	Elm, Siberian	11.0					11.0	684	Boxelder	14.0		14.0											
585	Boxelder	14.0		14.0				685	Boxelder	23.0		23.0											
586	Boxelder	10.0		10.0				686	Boxelder	8.0					8.0								
587	Elm, Siberian	8.5					8.5	687	Redcedar	6.5					6.5								
588	Cottonwood	8.0		8.0				688	Redcedar	7.5					7.5								
589	Cottonwood	8.0		8.0				689	Redcedar	5.0					5.0								
590	Cottonwood	8.0		8.0				690	Redcedar	6.5		6.5											
591	Cottonwood	8.0		8.0				691	Boxelder	8.5					8.5								
592	Cottonwood	9.5		9.5				692	Boxelder	8.0					8.0								
593	Cottonwood	10.0		10.0				693	Elm, Siberian	18.0					18.0								
594	Cottonwood	11.5		11.5				694	Redcedar	8.0					8.0								
595	Cottonwood	9.5		9.5				695	Redcedar	7.0		7.0											
596	Cottonwood	14.5		14.5				696	Redcedar	8.0		8.0											
597	Cottonwood	12.0		12.0				697	Elm, Siberian	11.5					11.5								
598	Cottonwood	12.5		12.5				698	Elm, Siberian	9.5					9.5								
599	Cottonwood	12.5		12.5				699															