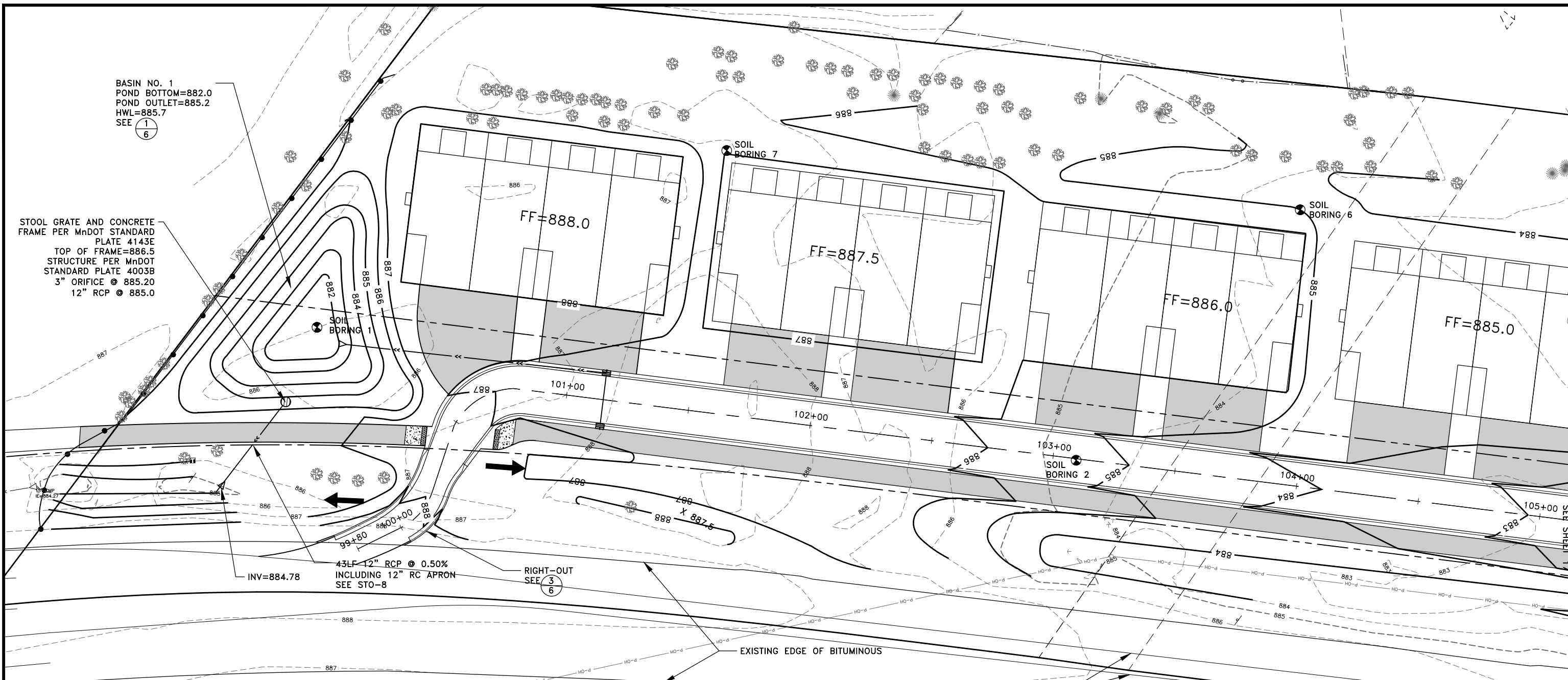


BASIN NO. 1
 POND BOTTOM=882.0
 POND OUTLET=885.2
 HWL=885.7
 SEE 1/6

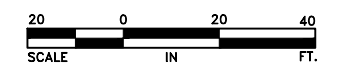
STOOL GRATE AND CONCRETE
 FRAME PER MNDOT STANDARD
 PLATE 4143E
 TOP OF FRAME=886.5
 STRUCTURE PER MNDOT
 STANDARD PLATE 4003B
 3" ORIFICE @ 885.20
 12" RCP @ 885.0



LEGEND	
-P-OH-	= DENOTES OVERHEAD ELECTRIC LINE
-T-BUR-	= DENOTES UNDERGROUND TELEPHONE LINE
G	= DENOTES GAS LINE
○	= UTILITY POLE
↑	= DENOTES GUY WIRE
⊞	= TELEPHONE PEDESTAL
☀	= CONIFEROUS TREE
🌳	= DECIDUOUS TREE
-800-	= EXISTING CONTOUR
-800-	= PROPOSED CONTOUR
->>-	= EXISTING STORM SEWER
-Δ-	= EXISTING STORM CULVERT
->>-	= PROPOSED STORM SEWER
▣	= PROPOSED STORM CATCH BASIN
⊙	= PROPOSED STORM CATCH BASIN MANHOLE
Δ	= PROPOSED STORM CULVERT
≡	= DENOTES PROPOSED CURB AND GUTTER
≡	= DENOTES EXISTING CURB AND GUTTER
▒	= PROPOSED BITUMINOUS SURFACE
▒	= PROPOSED CONCRETE SURFACE
---	= DENOTES PROPERTY LINE
- - -	= DENOTES RIGHT OF WAY
⊙	= DENOTES SOIL BORING
⊙	= DENOTES EXISTING SIGN
-x-	= DENOTES EXISTING FENCE

GENERAL NOTES:
 1. PROVIDE INLET PROTECTION ON ALL CATCH BASINS PER ERO-2.

BIO ROLL - SEE ERO-4
 SILT FENCE - SEE ERO-1



Apr 30, 2020 - 2:35pm K:\PRIVATE\4455.01\Engineering\4455.01_GRADING PLAN.dwg

DATE	REVISION
4/13/20	UPDATED ROAD ALIGNMENT
4/24/20	REVISE PLAT NAME

I hereby certify that this plan, specification, or report was prepared by me or under my direct supervision and that I am a duly Licensed Professional Engineer under the laws of the State of Minnesota.

CRAIG J. KOCHUM, P.E.
 Date 3/5/20 Lic. No. 23461

DESIGNED BY: TAE
 DRAWN BY: SGJ
 CHECKED BY: CJJ

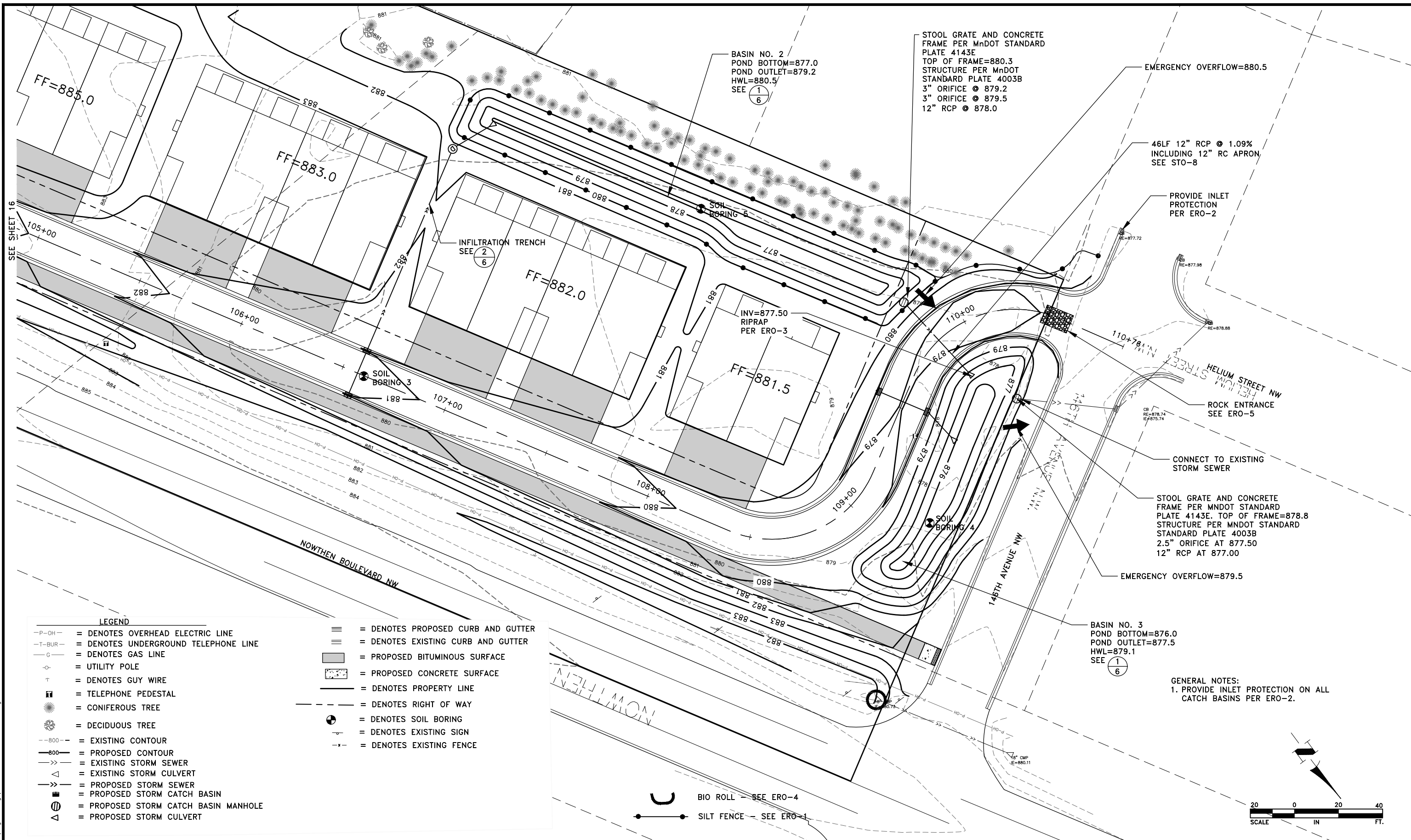


Hakanson Anderson
 Civil Engineers and Land Surveyors
 3601 Thurston Ave., Anoka, Minnesota 55303
 763-427-5860 FAX 763-427-0520
 www.hakanson-anderson.com

HAMPTON TOWNHOMES

**GRADING, DRAINAGE AND
 EROSION CONTROL PLAN**
 CITY OF RAMSEY, MINNESOTA

SHEET 16 OF 22 SHEETS
 4455.01



STOOL GRATE AND CONCRETE FRAME PER MNDOT STANDARD PLATE 4143E
 TOP OF FRAME=880.3
 STRUCTURE PER MNDOT STANDARD PLATE 4003B
 3" ORIFICE @ 879.2
 3" ORIFICE @ 879.5
 12" RCP @ 878.0

BASIN NO. 2
 POND BOTTOM=877.0
 POND OUTLET=879.2
 HWL=880.5
 SEE ①
 ⑥

EMERGENCY OVERFLOW=880.5

46LF 12" RCP @ 1.09% INCLUDING 12" RC APRON, SEE STO-8

PROVIDE INLET PROTECTION PER ERO-2

ROCK ENTRANCE SEE ERO-5

CONNECT TO EXISTING STORM SEWER

STOOL GRATE AND CONCRETE FRAME PER MNDOT STANDARD PLATE 4143E. TOP OF FRAME=878.8
 STRUCTURE PER MNDOT STANDARD PLATE 4003B
 2.5" ORIFICE AT 877.50
 12" RCP AT 877.00

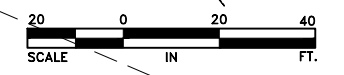
EMERGENCY OVERFLOW=879.5

BASIN NO. 3
 POND BOTTOM=876.0
 POND OUTLET=877.5
 HWL=879.1
 SEE ①
 ⑥

GENERAL NOTES:
 1. PROVIDE INLET PROTECTION ON ALL CATCH BASINS PER ERO-2.

LEGEND	
-P-OH-	= DENOTES OVERHEAD ELECTRIC LINE
-T-BUR-	= DENOTES UNDERGROUND TELEPHONE LINE
-G-	= DENOTES GAS LINE
○	= UTILITY POLE
↑	= DENOTES GUY WIRE
⊥	= TELEPHONE PEDESTAL
☀	= CONIFEROUS TREE
☁	= DECIDUOUS TREE
-800--	= EXISTING CONTOUR
—800—	= PROPOSED CONTOUR
—>>	= EXISTING STORM SEWER
—>>	= EXISTING STORM CULVERT
—>>	= PROPOSED STORM SEWER
■	= PROPOSED STORM CATCH BASIN
⊙	= PROPOSED STORM CATCH BASIN MANHOLE
△	= PROPOSED STORM CULVERT
—	= DENOTES PROPOSED CURB AND GUTTER
—	= DENOTES EXISTING CURB AND GUTTER
■	= PROPOSED BITUMINOUS SURFACE
■	= PROPOSED CONCRETE SURFACE
—	= DENOTES PROPERTY LINE
- - -	= DENOTES RIGHT OF WAY
⊙	= DENOTES SOIL BORING
⊙	= DENOTES EXISTING SIGN
-x-	= DENOTES EXISTING FENCE

BIO ROLL - SEE ERO-4
 SILT FENCE - SEE ERO-1



Apr. 30, 2020 - 2:35pm K:\PRIVATE\4455.01\Engineering\4455.01_GRADING PLAN.dwg

DATE	REVISION
4/13/20	UPDATED ROAD ALIGNMENT
4/24/20	REVISE PLAT NAME

I hereby certify that this plan, specification, or report was prepared by me or under my direct supervision and that I am a duly licensed Professional Engineer under the laws of the State of Minnesota.
 Date 3/5/20
 CRAIG J. JOCHUM, P.E.
 Lic. No. 23461

DESIGNED BY: TAE
 DRAWN BY: SGJ
 CHECKED BY: CJJ



Hakanson Anderson
 Civil Engineers and Land Surveyors
 3601 Thurston Ave., Anoka, Minnesota 55303
 763-427-5860 FAX 763-427-0520
 www.hakanson-anderson.com

HAMPTON TOWNHOMES

GRADING, DRAINAGE AND EROSION CONTROL PLAN
 CITY OF RAMSEY, MINNESOTA

SHEET 17 OF 22 SHEETS
 4455.01