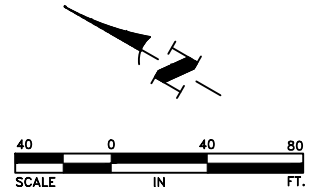
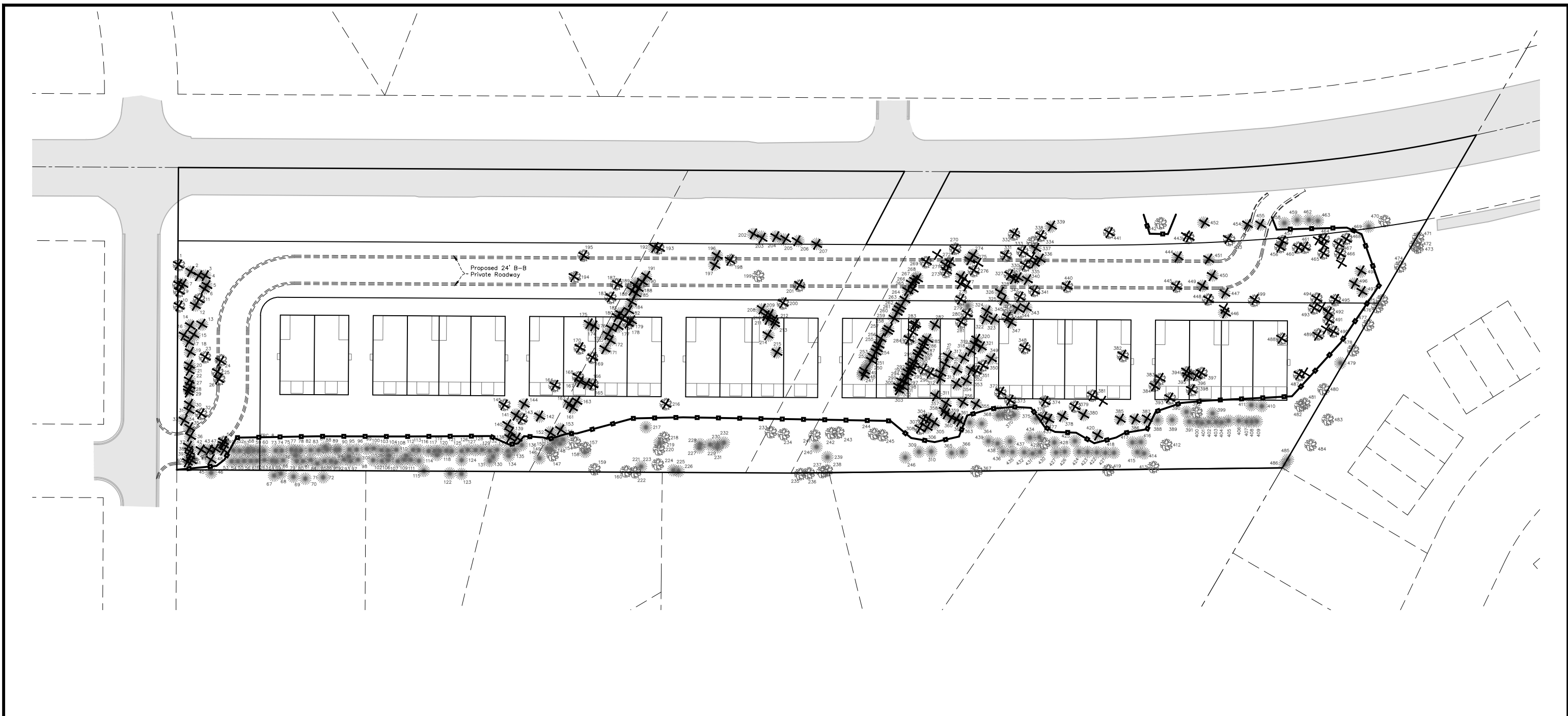


Apr 30, 2020 - 2:36pm K:\PRIVATE\4455.01\Engineering\4455.01\_TREE\_INVENTORY.dwg



LEGEND	
	= CONIFEROUS TREE
	= DECIDUOUS TREE
	= CLEAR AND GRUB TREE
	= TREE PROTECTION FENCE ①

**GENERAL NOTES:**

- SILT FENCE/TREE PROTECTION FENCE SHALL BE IN PLACE PRIOR TO THE START OF ANY REMOVAL ACTIVITIES. SEE THE GRADING, DRAINAGE AND EROSION CONTROL PLAN FOR SILT FENCE LOCATIONS.
- CLEAR AND GRUB BRUSH, SHRUBS AND SMALL TREES WITHIN THE CONSTRUCTION LIMITS (NOT SHOWN).

**REFERENCE NOTES:**

① FENCE MATERIAL SHALL MEET THE REQUIREMENTS OF MN/DOT SPEC. 2572.2.B. FENCE SHALL BE INSTALLED PER MN/DOT SPEC. 2572.3.A.1.

DATE	REVISION
4/24/20	REVISE PLAT NAME

I hereby certify that this plan, specification, or report was prepared by me or under my direct supervision and that I am a duly Licensed Professional Engineer under the laws of the State of Minnesota.

*Graig J. Jochem*  
**Graig J. JOCHUM, P.E.**  
 Date 3/5/20 Lic. No. 23461

DESIGNED BY:  
TAE

DRAWN BY:  
SGJ

CHECKED BY:  
CJJ



**Hakanson Anderson**  
 Civil Engineers and Land Surveyors  
 3601 Thurston Ave., Anoka, Minnesota 55303  
 763-427-5860 FAX 763-427-0520  
 www.hakanson-anderson.com

**HAMPTON TOWNHOMES**

**TREE INVENTORY**  
 CITY OF RAMSEY, MINNESOTA

SHEET T1 OF T2 SHEETS

Apr. 30, 2020 - 2:38pm  
K:\PRIVATE\4455.01\Engineering\4455.01\_TREE\_INVENTORY.dwg

Table with 5 columns: Tree Number, Common Name (Scientific Name), Diameter (Inches), Condition, Action. Contains 99 rows of tree inventory data.

Table with 5 columns: Tree Number, Common Name (Scientific Name), Diameter (Inches), Condition, Action. Contains 99 rows of tree inventory data.

Table with 5 columns: Tree Number, Common Name (Scientific Name), Diameter (Inches), Condition, Action. Contains 99 rows of tree inventory data.

Table with 5 columns: Tree Number, Common Name (Scientific Name), Diameter (Inches), Condition, Action. Contains 99 rows of tree inventory data.

Table with 5 columns: Tree Number, Common Name (Scientific Name), Diameter (Inches), Condition, Action. Contains 99 rows of tree inventory data.

Significant Tree Summary table with 2 columns: Description, Count. Rows include Total Significant Tree DBH on Site (5931), Excludes for pond, Invasives, etc. (2230), Required to be saved (40% X 3601) (1440), and Proposed to be saved (1830).

DATE REVISION table with 2 columns: DATE, REVISION. Row 1: 4/24/20, REVISE PLAT NAME.

I hereby certify that this plan, specification, or report was prepared by me or under my direct supervision and that I am a duly licensed Professional Engineer under the laws of the State of Minnesota.  
Date 3/5/20  
DRAIG J. JOCHUM, P.E.  
Lic. No. 23461

DESIGNED BY: TAE  
DRAWN BY: SGJ  
CHECKED BY: CJJ



Hakanson Anderson  
Civil Engineers and Land Surveyors  
3601 Thurston Ave., Anoka, Minnesota 55303  
763-427-5860 FAX 763-427-0520  
www.hakanson-anderson.com

HAMPTON TOWNHOMES

TREE INVENTORY  
CITY OF RAMSEY, MINNESOTA  
SHEET T2 OF T2 SHEETS  
4455.01