



Ve-Ve, Inc.  
**MARINE PRODUCTS**  
 14047 Azurite St NW  
 763-427-5330  
 john@veveinc.com

**Dear Business Neighbors,**

We are reaching out to you in advance before our meeting with the City of Ramsey on November 5, 2020. Our company is looking at purchasing 2 shipping containers and we are looking for approval from your business so we may go ahead and make this purchase. Our business is expanding and our storage space has diminished. We are following compliance guidelines with the city before we purchase (2) 8'w x 20'L shipping containers which we are in dire need of.

Our business has been at our current location since 1973. We have added on three times throughout the years. These past few years our business has grown, our sales are up and the future of Ve-Ve, Inc. looks bright. We are running out of indoor space and currently it has become a work hazard having non-essential items such as pallets and gaylord boxes piling up. In the past we have stored them outside, but that lead to theft of our items. The storage containers would provide an immediate solution for our non-essential items and packaging materials. As winter approaches this would allow for cold storage of material and a deterrent from theft.

Thank you for your time and attention to this matter. If you wish to support our effort, please sign below.

**Warm Regards,**

**John Vevea  
 Owner/President**

- ① TLM CABINETS TLM Todd Muehlhauser
- ② Accurate Litter Grind. Jim Nienaber Jim Nienaber
- ③ R&D Transportation Rick Chubb Rick Chubb

1411ST AVE NW

AZUREITE ST NW

14047

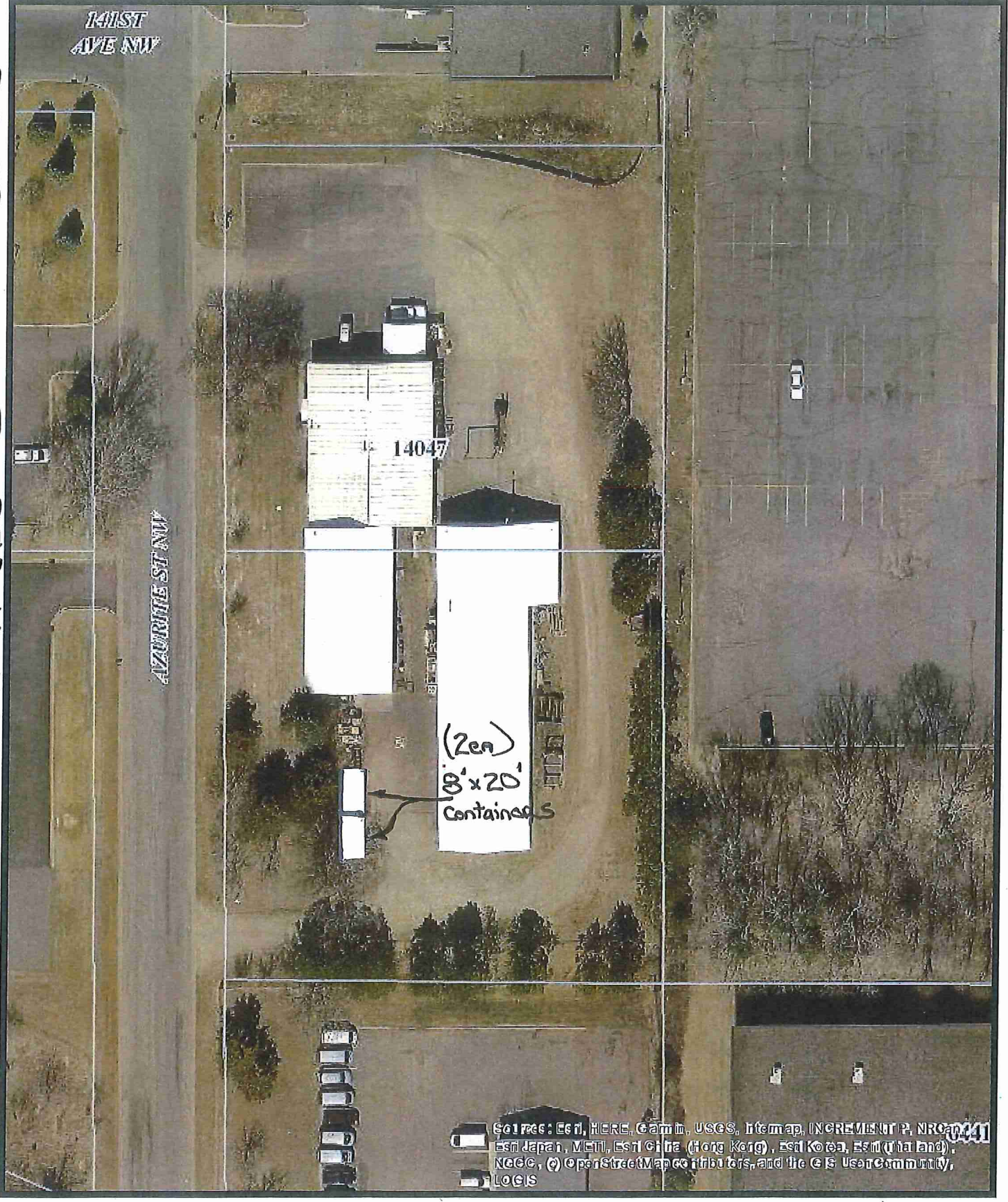
(2ea)  
8' x 20'  
Containers

#2 ACCURATE LETTER GRIND  
#1 TLM CABINETS

Sources: Esri, HERE, Garmin, USGS, Intermap, INCREMENT P, NRCan, Esri Japan, METI, Esri China (Hong Kong), Esri Korea, Esri (India), NCCO, © OpenStreetMap contributors, and the GIS User Community, LOGIS

#3 RAD Transportation

mi  
00.003006 0.012 0.018 0.024







www.yangming.com  
**YANG MING**

LVNU 018138 0  
2262

70

TOP

U

U



L VNU 018138 0  
2262

MAX. CR.  
TARE  
NET

CU CAP. 111.121 M<sup>3</sup>

COMPTON  
RETRACT

