

MINNESOTA DEPARTMENT OF TRANSPORTATION

CITY OF RAMSEY

ANOKA COUNTY, MINNESOTA

RIVERDALE DRIVE IMPROVEMENTS

CITY IMPROVEMENT PROJECT #21-00

DESIGN DESIGNATION	RIVERDALE DR NW
STA. STA 0+19 TO STA. STA 23+70	
FUNTIONAL CLASSIFICATION	URBAN COLLECTOR
R-VALUE	60
ΣN-18	180,000
NO. & WIDTH OF TRAFFIC LANES	2 & 12 ft
NO. & WIDTH OF PARKING LANES	1 & 8 ft
ADT (PRESENT YEAR) 2021	1,000
ADT (PROJECTED YEAR) 2041	2,120
HCA DT (PROJECTED YEAR) 2041	3.87%
DESIGN SPEED	35 mph
DESIGN LOAD	10 ton
DESIGN SPEED FOR ROADWAY BASED ON	
ON STOPPING SIGHT DISTANCE:	
HEIGHT OF EYE = <u>3.5</u> FT	
HEIGHT OF OBJECT = <u>2.0</u> FT	

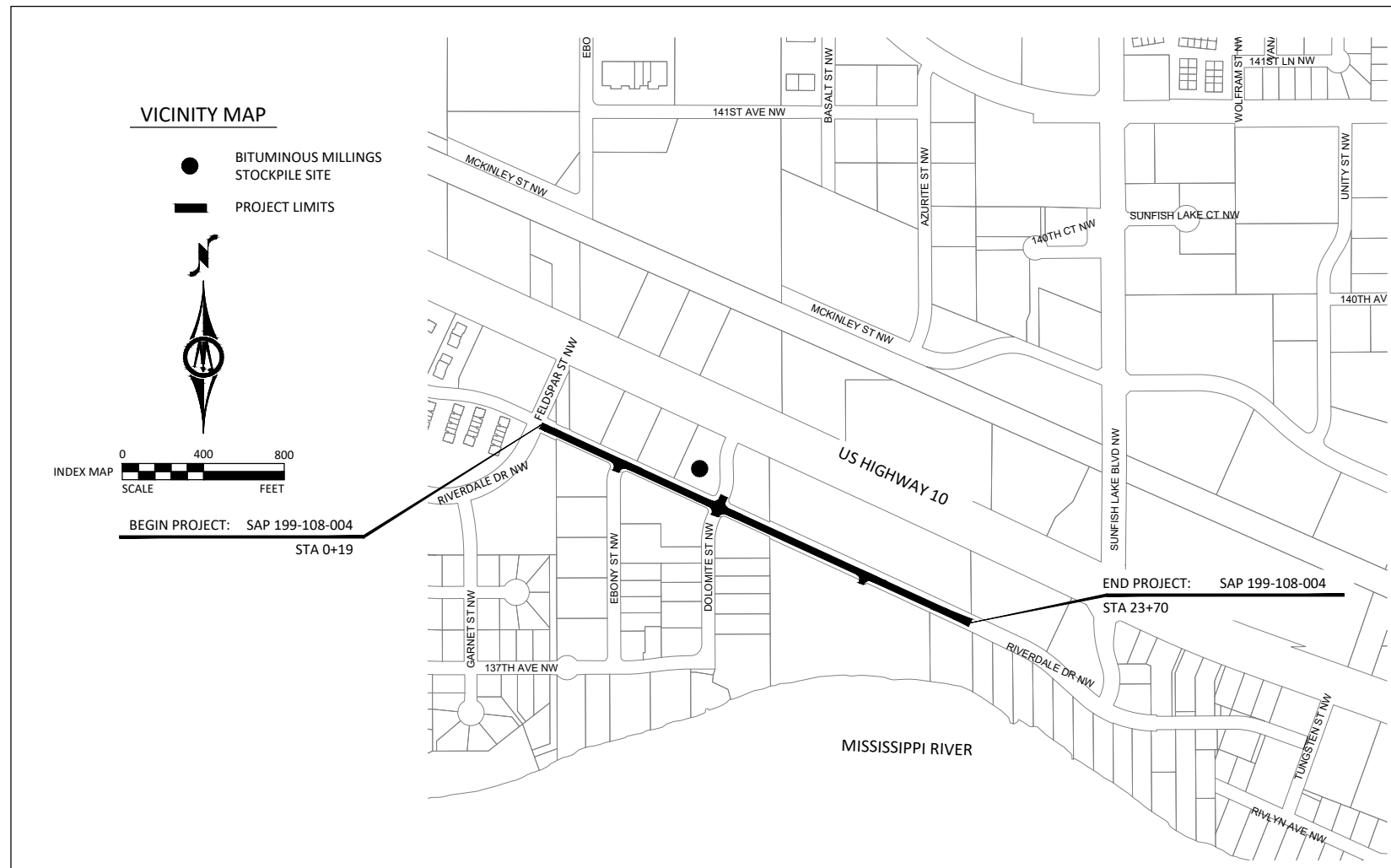
CONSTRUCTION PLAN FOR: GRADING, BITUMINOUS RECLAMATION, AGGREGATE BASE, PLANT MIXED BITUMINOUS PAVEMENT, CONCRETE CURB AND GUTTER, ADA IMPROVEMENTS, STORM SEWER, LANDSCAPING AND RELATED APPURTENANCES

S.A.P. 199-108-004 LOCATED ON RIVERDALE DR NW FROM FELDSPAR ST NW TO 750' WEST OF SUNFISH LAKE BLVD

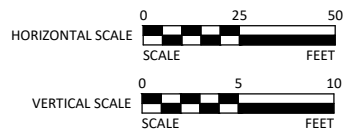
RIVERDALE DR (S.A.P. 199-108-004)			
GROSS LENGTH	2351.0	FEET	0.445
BRIDGE LENGTH	NA	FEET	NA
EXCEPTION LENGTH	NA	FEET	NA
NET LENGTH	2351.0	FEET	0.445
MILES			

LENGTH AND DESCRIPTION BASED UPON PROPOSED RIVERDALE DR NW CENTERLINE

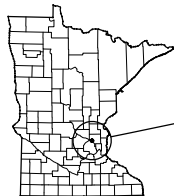
DESIGN DESIGNATION	OFF-ROAD TRAIL
STA 0+19 TO 13+45	
FUNTIONAL CLASSIFICATION	BIKE TRAIL
DESIGN SPEED	20 MPH
STOPPING SIGHT DISTANCE	
HEIGHT OF EYE = <u>4.5</u> FT	
HEIGHT OF OBJECT = <u>0</u> FT	



TYPICAL PLAN SCALE UNLESS OTHERWISE NOTED:



PROJECT LOCATION



CITY: RAMSEY
 COUNTY: ANOKA
 DISTRICT: METRO

THE SUBSURFACE UTILITY INFORMATION IN THIS PLAN IS UTILITY QUALITY LEVEL D UNLESS OTHERWISE NOTED. THIS UTILITY LEVEL WAS DETERMINED ACCORDING TO THE GUIDELINES OF CI/ASCE 38-02, ENTITLED "STANDARD GUIDELINES FOR THE COLLECTION AND DEPICTION OF EXISTING SUBSURFACE UTILITY DATA."

MINN. PROJ. NO. _____ STATE FUNDS _____

--- GOVERNING SPECIFICATIONS ---
 THE 2018 EDITION OF THE MINNESOTA DEPARTMENT OF TRANSPORTATION "STANDARD SPECIFICATION FOR CONSTRUCTION" SHALL GOVERN.
 ALL TRAFFIC CONTROL DEVICES AND SIGNING SHALL CONFORM AND BE INSTALLED IN ACCORDANCE WITH THE "MINNESOTA MANUAL ON UNIFORM TRAFFIC CONTROL DEVICES" (MN MUTCD) AND PART VI, "FIELD MANUAL" FOR TEMPORARY TRAFFIC CONTROL DEVICES.

SHEET NUMBER	SHEET TITLE
GENERAL	
1	TITLE SHEET
2	LEGEND
3	STATEMENT OF ESTIMATED QUANTITIES
4	ALIGNMENT TABULATION
CIVIL	
5-6	EXISTING CONDITIONS AND REMOVALS
7-17	TYPICAL SECTIONS & DETAILS
18-20	STORMWATER POLLUTION PREVENTION PLAN
21-22	EROSION CONTROL
23-27	STREET PLAN AND PROFILE
28-29	INTERSECTION DETAILS
30-31	SIGNAGE & STRIPING PLAN
32-37	CROSS SECTIONS

THIS PLAN SET CONTAINS 37 SHEETS.

90% PLANS

Kevin P. Kielb, P.E.
 Design Engineer: I hereby certify that this plan was prepared by me or under my direct supervision, and that I am a duly Licensed Professional Engineer under the laws of the State of Minnesota.

Date 1/12/2021 License Number 23211

Approved: City of RAMSEY Engineer _____ Date _____

District State Aid Engineer: _____ Date _____
 Review for compliance with State Aid Rules/Policy

Approved for State Aid Funding: State Aid Engineer _____ Date _____

BM=859.76 TOP NUT OF HYDRANT STA 1+24.40 SOUTH SIDE OF STREET	PROJECT DATUM: HORIZONTAL: ANOKA COUNTY COORDINATES (1996 ADJUSTMENT) VERTICAL: NGVD 29	RECORD DRAWING INFORMATION OBSERVER: CONTRACTOR: DATE:
--	--	---



7533 SUNWOOD DR NW, SUITE 206
 RAMSEY, MINNESOTA 55303
 Phone: (763) 433-2851
 Email: Ramsey@bolton-menk.com
 www.bolton-menk.com



DESIGNED	NO.	ISSUED FOR	DATE
ZFL			
ZFL			
KPK			
CLIENT PROJ. NO. 21-00			

CITY OF RAMSEY, MINNESOTA		SHEET 1 OF 37
RIVERDALE DRIVE IMPROVEMENTS, S.A.P. 199-108-004		
STATE AID PROJECT NO. _____	S.A.P. 199-108-004	