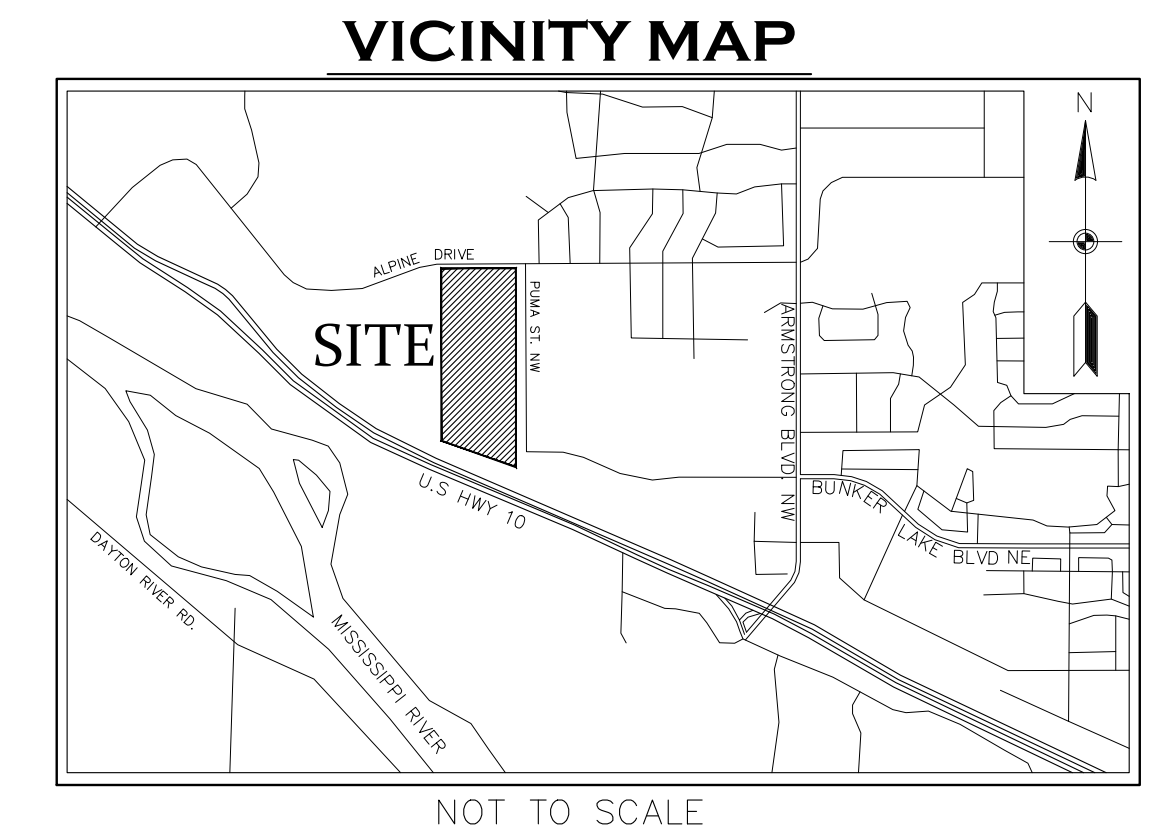


RIVERSTONE 5TH ADDITION

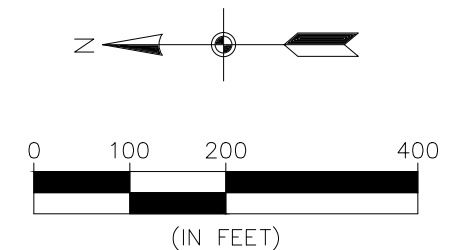
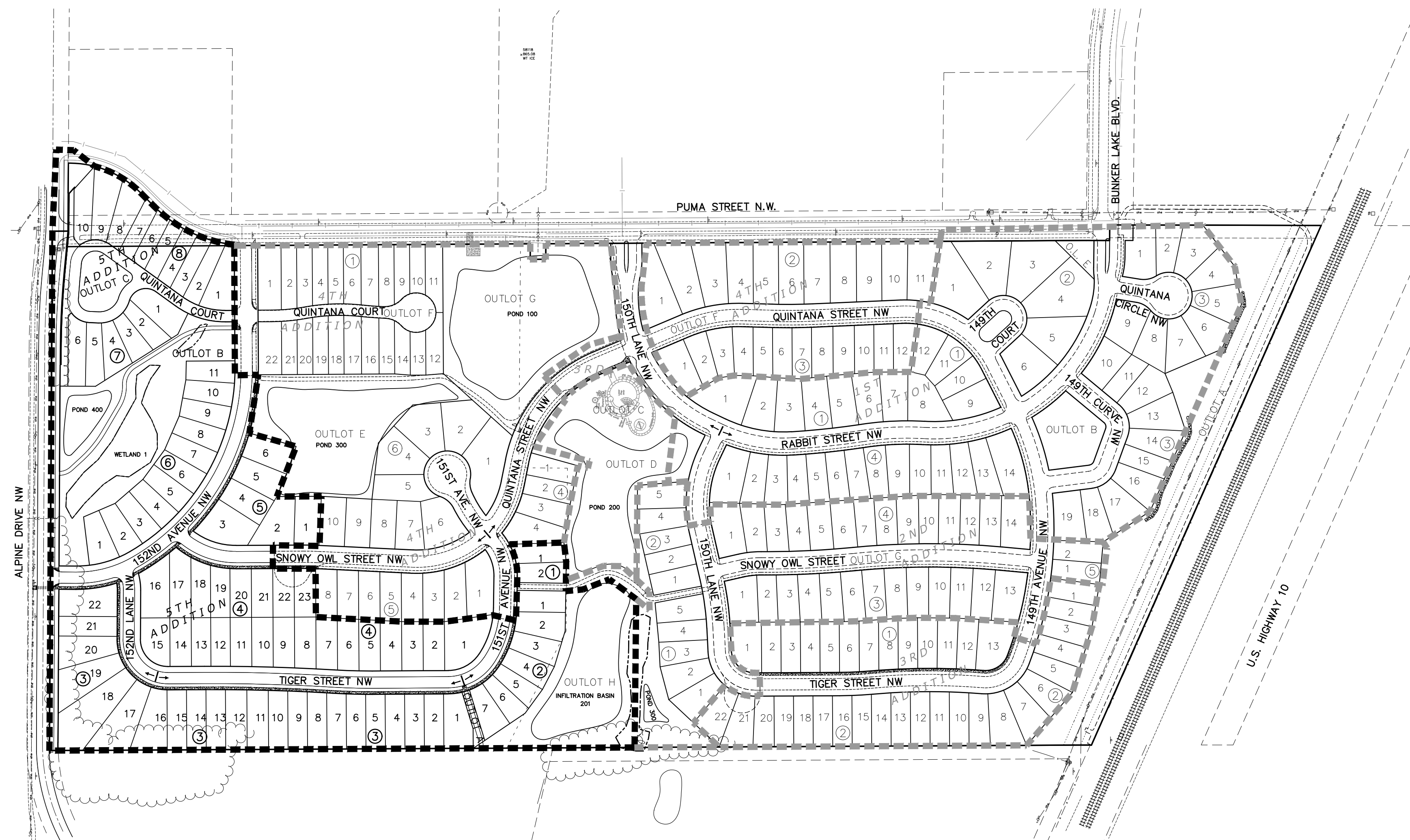
SANITARY SEWER, WATER MAIN, STORM SEWER AND STREET CONSTRUCTION PLANS

RAMSEY, MINNESOTA



SHEET INDEX

1. COVER
2. SANITARY SEWER INDEX
3. STORM SEWER INDEX
4. SANITARY SEWER & WATERMAIN
 - TIGER STREET NW/152ND LANE NW
5. SANITARY SEWER & WATERMAIN
 - 152ND AVENUE NW/SNOWY OWL STREET NW
6. SANITARY SEWER & WATERMAIN
 - QUINTANA COURT
- 7-9. STORM SEWER
10. STREET CONSTRUCTION
 - TIGER STREET NW/152ND LANE NW
11. STREET CONSTRUCTION
 - 152ND AVENUE NW/SNOWY OWL STREET NW
12. STREET CONSTRUCTION
 - QUINTANA COURT
13. TRAIL CONSTRUCTION
- 14-18. DETAILS



BENCHMARK

1. Anoka County Benchmark No. 3076
Elev. = 890.186 (NAVD 88)
2. Anoka County Benchmark No. 2078
Elev. = 899.499 (NAVD 88)

CALL BEFORE YOU DIG



Know what's below.
Call before you dig.

The subsurface utility information shown on this plan is utility Quality Level D. This quality level was determined according to the guidelines of CI/ASCE 38-02, entitled "Standard Guideline for the Collection and Depiction of Existing Subsurface Utility Data."