



Real People. Real Solutions.

7533 Sunwood Drive NW  
Suite 206  
Ramsey, MN 55303-5119

Ph: (763) 433-2851  
Fax: (763) 427-0833  
Bolton-Menk.com

November 18, 2020

Mr. Bruce Westby, P.E.  
City Engineer  
City of Ramsey  
7550 Sunwood Drive NW  
Ramsey, Minnesota 55303

RE: Proposal for Engineering Services – 2021 Riverdale Drive Improvement Project – Feldspar Street to Tungsten Street

Dear Mr. Westby:

We appreciate the opportunity to present this scope of services for the Riverdale Drive Improvement project. Our scope and fees were prepared based on our understanding of the project and our previous experience in delivering State Aid projects.

The following proposal is based on your November 17, 2020 email request, including the layouts attached to the email.

## SCOPE

The proposed improvements will be generally as described below:

- Riverdale Drive reconstruction from Feldspar Street to 750 feet west of Sunfish Lake Boulevard,
- Mill & overlay of Riverdale Drive from 750 feet west of Sunfish Lake Boulevard to Tungsten Street,
- Construction of a 10 ft wide bituminous trail from Feldspar Street to 300 feet east of Dolomite Street,
- Construction of a 6 ft sidewalk from Feldspar Street to Dolomite Street,
- Adjustments of fire hydrants, as needed,
- Exposing of water services to verify they are properly restrained, and
- Storm sewer facilities at various locations along Riverdale Drive.

Attached are the figures received from the City of Ramsey depicting the proposed improvements.

Project scope assumptions used in creating this fee proposal include the following:

- **A topographic survey** of the corridor was completed by the City of Ramsey. We have assumed the City will forward information related to the survey control points to us for reference. We have estimated an additional augmentation survey will be required during design.
- **Geotechnical** borings will be required for the project. A total of 4 borings, along with 3 bituminous corings, will be completed along the corridor. We are proposing to use AET for the geotechnical evaluation.
- No **Right-of-Way** or easements will be required for the project.

- **State Aid formatted plans and specifications**, including plan review checklist and spread calculations, are required. The signature block will follow the State Aid format.
- The anticipated **plan set** will include the following 45 sheets:
  - Title (1 sheet),
  - Legend (1 sheet),
  - Estimated Quantities/Standard Plates (1 sheet),
  - Tabulations (2 sheets),
  - Alignment Plan and Tabulation (1 sheet),
  - Typical Sections (1 sheet),
  - Construction Details (3 sheets),
  - MnDOT Standard Plan Sheets (6 sheets),
  - Intersection and Pedestrian Ramp Details (2 sheets),
  - Storm Water Pollution Prevention Plan (3 sheets),
  - Erosion and Sediment Control (2 sheets),
  - Existing Conditions & Removals (4 sheets),
  - Riverdale Drive Plan and Profile – Street and Storm Sewer (4 sheets),
  - Riverdale Drive Mill & Overlay (2 sheets),
  - Traffic Control and Staging Plan (3 sheets),
  - Storm Sewer Leads (1 sheet),
  - Signage & Striping (2 sheet), and
  - Cross-Sections (6 sheets).

The above sheet listing assumes traffic control will be designed per the Field Manual for Temporary Traffic Control Zone Layouts, and no project specific traffic control layouts will be created. The Traffic Control and Staging plans listed above will provide guidance to allow the contractor to prepare details plans for submittal and review.

- The City will forward existing plans and record drawings for the corridor for use in creation of the base drawings.
- The City will provide the most current City standard plans, specifications and details.
- On-line bidding through QuestCDN will be used for procurement of bids, with the on-line bid opening facilitated at Bolton & Menk's Ramsey office location.
- Storm sewer will be designed to meet State Aid standards for allowable spread for the narrowed roadway.
- Storm sewer will be extended to the vacant lot in the NW quadrant of Dolomite Street and Riverdale Drive.
- The City will complete a Feasibility Report and provide the documents to us.
- No storm water ponding will be required. One water quality structure will be added at the existing storm sewer connection.
- Construction related services such as staking, administration and observation are not included in this proposal. A separate proposal can be submitted once the extent and timing of the improvements is finalized.

## **ESTIMATED CONSTRUCTION COSTS OF IMPROVEMENTS**

Estimated construction costs are based on pricing observed in 2020, with adjustments to account for construction in the year 2021. The estimated costs also include 10 percent contingencies to account for unforeseen costs. Our scope of services is based on a project with a construction cost of approximately \$1,200,000.

We will create a detailed engineer's estimate during the design phase of the project.

## **SCHEDULE**

Plan preparation is anticipated to begin in December of 2020, with anticipation of a bid opening in late February of 2021, and City Council Award in early March of 2021.

## **PERMITTING AND APPROVALS**

The work associated with the roadway improvements will require the following permits:

- MnDOT State Aid Approval,
- Lower Rum River Watershed Management Organization (Stormwater and Erosion Control), and
- MPCA (NPDES – Construction Stormwater General Permit).

## **FEES**

We have attached a fee spreadsheet depicting hours, rates, and total compensation on a per task basis. We are proposing to use AET for geotechnical services. Based on our understanding of the improvements, our proposed fees for the work, including geotechnical services, are \$70,445.00.

If there are any questions related to the scope and/or fee portion of this proposal, please call me at (651) 968-7760.

Sincerely,

**Bolton & Menk, Inc.**

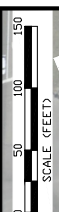
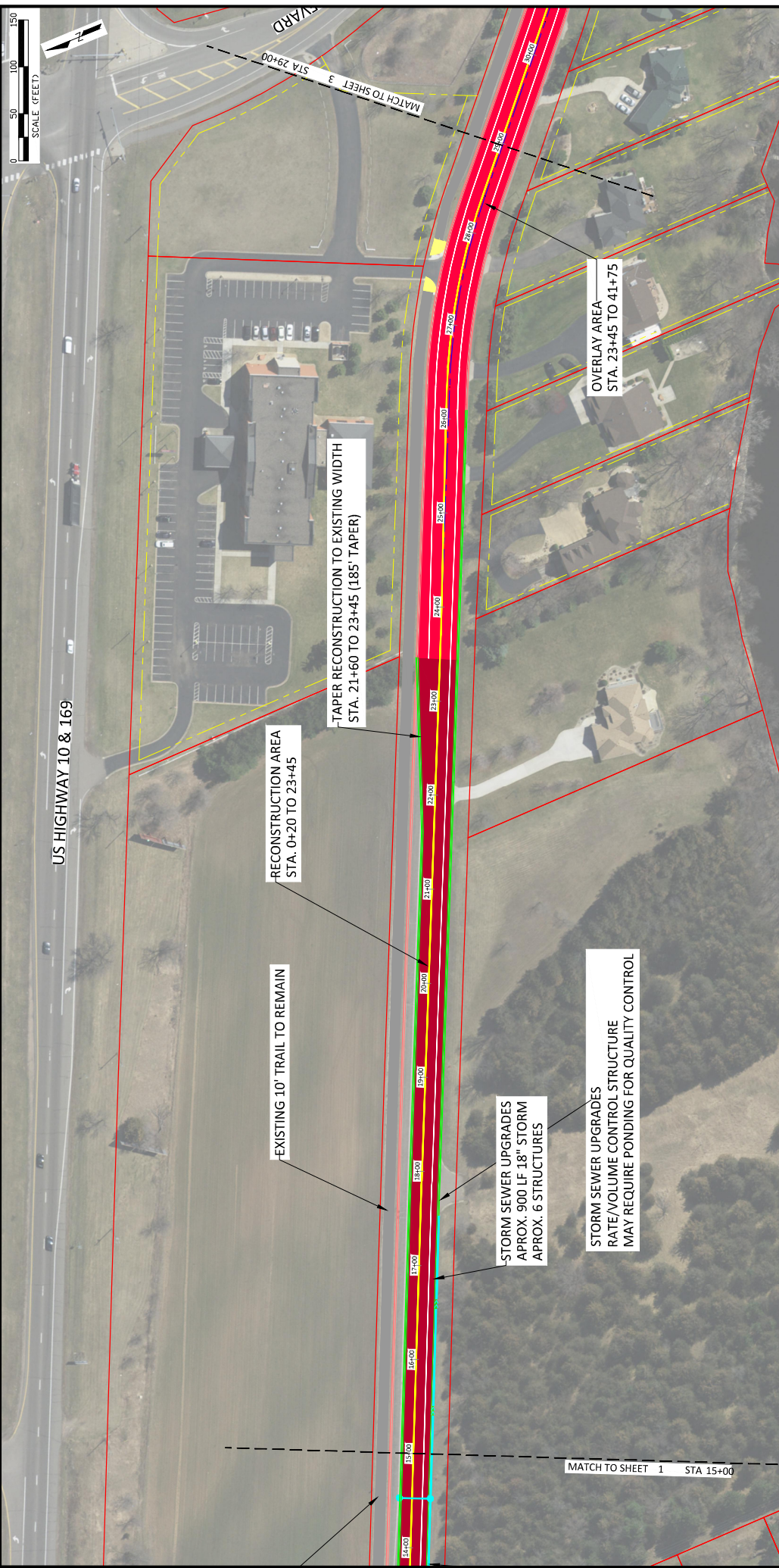


**Kevin P. Kielb, P.E.**  
Principal Engineer

## **ATTACHMENTS:**

- Improvements Exhibits
- Detailed Fee Spreadsheet

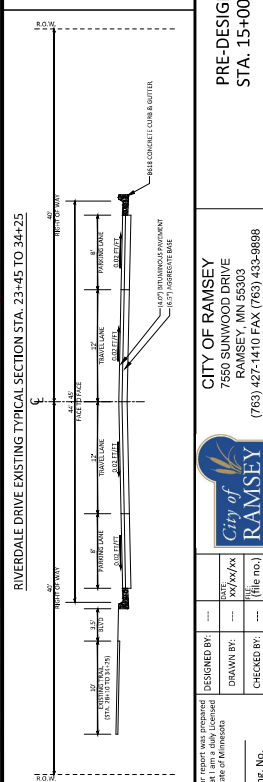
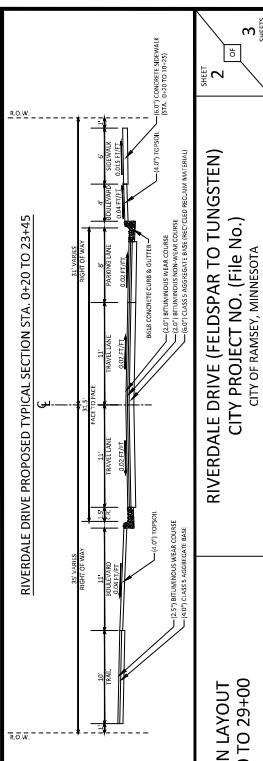




US HIGHWAY 10 & 169

MATCH TO SHEET 3 STA 29+00

MATCH TO SHEET 1 STA 15+00



**LEGEND**

- PR. RECONSTRUCTION
- PR. OVERLAY
- PR. 10' BITUMINOUS TRAIL
- PR. 6' CONCRETE WALK
- PR. CONCRETE VALLEY GUTTER
- PR. STORM SEWER
- PR. CONCRETE CURB AND GUTTER
- EX. BITUMINOUS TRAIL
- EX. CONCRETE WALK
- EX. CONCRETE CURB AND GUTTER

**DESIGNED BY:** ...  
**DRAWN BY:** ...  
**CHECKED BY:** ...

**DATE:** ...  
**REVISION:** ...

**CITY OF RAMSEY**  
 7550 SUNWOOD DRIVE  
 RAMSEY, MN 55303  
 (763) 427-1410 FAX (763) 433-9898

**RIVERDALE DRIVE (FELDSPAR TO TUNGSTEN)**  
 CITY PROJECT NO. (File No.)  
 CITY OF RAMSEY, MINNESOTA

**PRE-DESIGN LAYOUT**  
 STA. 15+00 TO 29+00

DATE: 08/20/2024  
 TIME: 10:00 AM  
 PROJECT: RIVERDALE DRIVE (FELDSPAR TO TUNGSTEN)  
 SHEET: 2 OF 3



## DETAILED COST ESTIMATE

<b>CLIENT: City of Ramsey</b> <b>PROJECT: 2021 Riverdale Drive Extension Project</b>	<b>BOLTON &amp; MENK, INC.</b>
---	--------------------------------

WORK TASK DESCRIPTION	Project Manager	Project Engineer	Design Engineer	Sr. Traffic Engineer	Technician	Survey	Clerical	Total Hours	Cost
-----------------------	-----------------	------------------	-----------------	----------------------	------------	--------	----------	-------------	------

**Preliminary and Final Design**

1.0 Project Management / Meetings	8	12	2	0	0	0	2	<b>24</b>	\$3,764
2.0 Data Collection / Base Map	1	4	4	0	0	34	0	<b>43</b>	\$6,002
3.0 Utility Coordination	0	4	8	0	4	0	1	<b>17</b>	\$2,108
4.0 Geotechnical Coordination	0	2	2	0	0	0	1	<b>5</b>	\$610
5.0 Final Design and Plan Preparation	12	64	92	10	202	0	20	<b>400</b>	\$52,736
6.0 Bidding Services	5	11	10	0	0	0	6	<b>32</b>	\$4,239
<b>Subtotal Bolton &amp; Menk Design</b>	<b>21</b>	<b>86</b>	<b>108</b>	<b>10</b>	<b>206</b>	<b>34</b>	<b>24</b>	<b>489</b>	<b>\$65,220</b>

SUBCONSULTANT - American Engineering Testing      \$5,225

<b>TOTAL for Design through Bidding</b>	<b>\$70,445</b>
---	-----------------