

# CITY OF RAMSEY

## BUSINESS PARK 95 STREET RECONSTRUCTIONS

### CITY IMPROVEMENT PROJECT NO. 21-03

## GOVERNING SPECIFICATIONS

THE 2018 EDITION OF THE MINNESOTA DEPARTMENT OF TRANSPORTATION "STANDARD SPECIFICATIONS FOR CONSTRUCTION" SHALL GOVERN.

ALL FEDERAL, STATE AND LOCAL LAWS, REGULATIONS AND ORDINANCES SHALL BE COMPLIED WITH IN THE CONSTRUCTION OF THIS PROJECT.

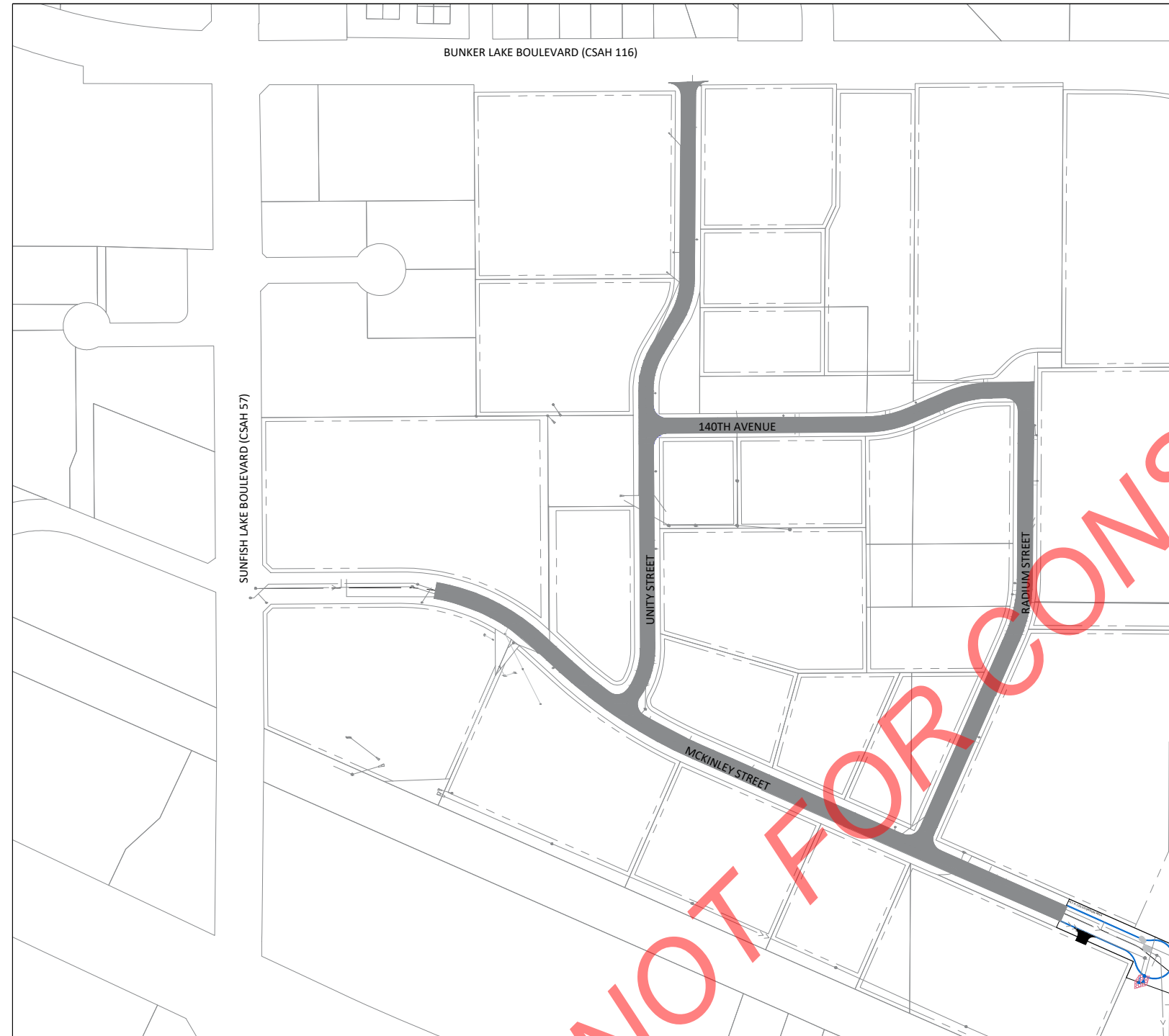
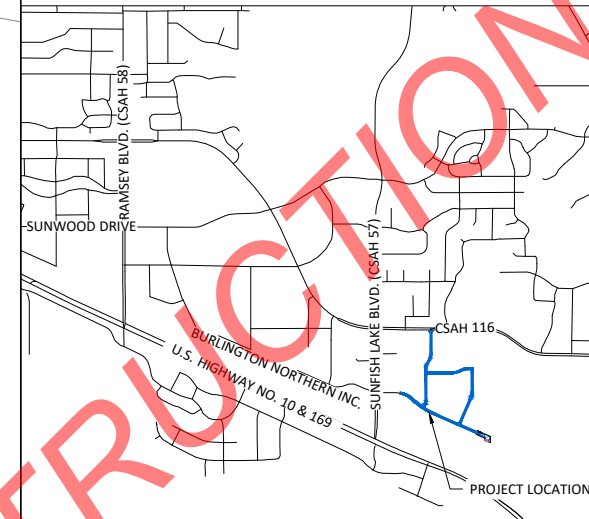
ALL TRAFFIC CONTROL DEVICES AND SIGNING SHALL CONFORM TO THE MINNESOTA MANUAL ON UNIFORM TRAFFIC CONTROL DEVICES, INCLUDING THE FIELD MANUAL FOR TEMPORARY TRAFFIC CONTROL ZONE LAYOUTS.

### SHEET INDEX

THIS PLAN CONTAINS 26 SHEETS

SHEET No.	DESCRIPTION
01	TITLE SHEET
02	SEQ. & NOTES
03	ALT A - CDS ALIGNMENT LAYOUT
04	TYPICAL SECTIONS
05	DETAILS
06-07	SWPPP
08	EROSION CONTROL
09	EROSION CONTROL - ALT A MCKINLEY STREET CDS EXTENSION
10-17	EXISTING CONDITIONS & REMOVALS
18-25	STREET IMPROVEMENTS
26	ALT A MCKINLEY CDS - CROSS SECTIONS

### LOCATION MAP



### LEGEND

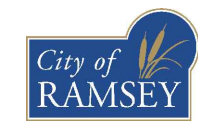
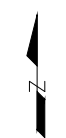
	LIGHT POLE		EASEMENT
	TREE		RIGHT OF WAY
	SHRUB		ELECTRIC
	SIGN		OVERHEAD UTILITY
	VALVE		GAS
	UTILITY PEDESTAL		TELECOMMUNICATIONS
	HAND HOLE		STORM SEWER
	REMOVE TREE		SANITARY SEWER
	3'X2' CATCH BASIN		WATERMAIN
	MANHOLE		SAWCUT PAVEMENT
	INLET PROTECTION		TREE LINE
	HYDRANT		FENCE
	VALVE		LANDSCAPING
	GRAVEL SURFACE		RETAINING WALL
	CONCRETE PAVEMENT		5' CONTOUR LINE
	BITUMINOUS PAVEMENT		1' CONTOUR LINE
	RIP RAP		SILT FENCE
	SODDING TYPE LAWN		
	NEW BITUMINOUS PAVEMENT		
	RECLAIM BITUMINOUS PAVEMENT		
	MILL BITUMINOUS PAVEMENT		

I hereby certify that this plan, specification, or report was prepared by me or under my direct supervision and that I am a duly Licensed Professional Engineer under the laws of the State of Minnesota.

JOE FERIANCEK, P.E.      57095      DATE 3/9/21  
 CIVIL ENGINEER II      LIC. NO.

DATE	REVISION

NOT FOR CONSTRUCTION



CITY OF RAMSEY  
 7550 SUNWOOD DRIVE  
 RAMSEY, MN 55303  
 (763) 427-1410 FAX (763) 433-9898

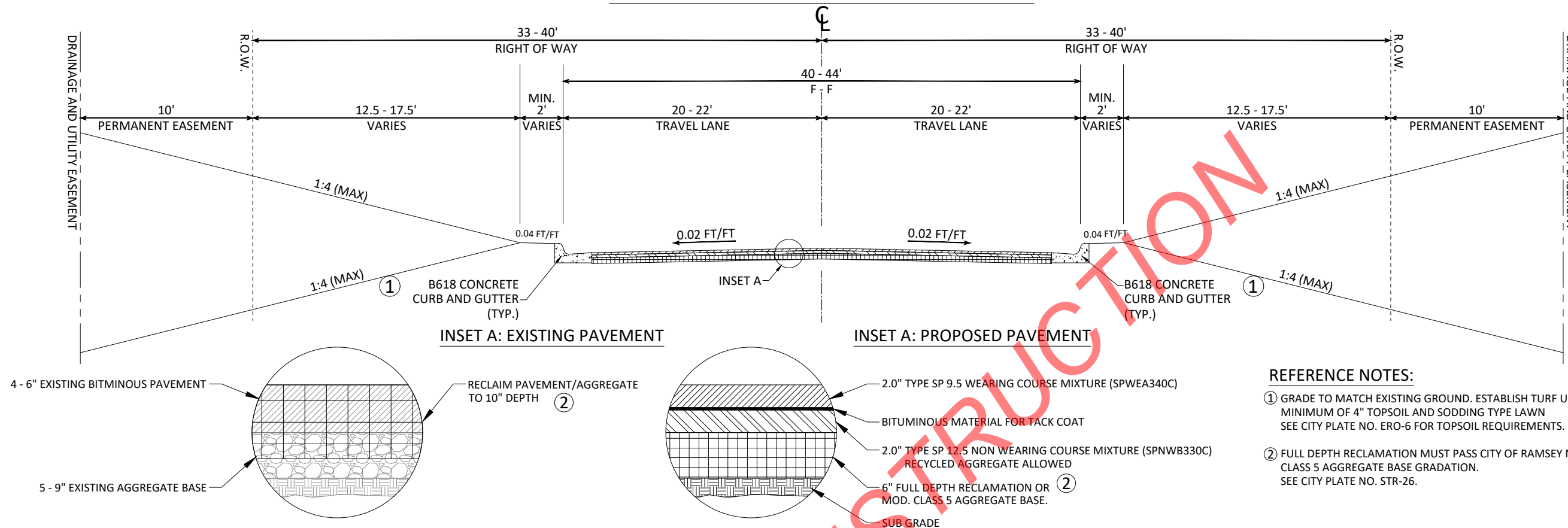
THE SUBSURFACE UTILITY INFORMATION IN THIS PLAN IS UTILITY QUALITY LEVEL D. THIS QUALITY LEVEL WAS DETERMINED ACCORDING TO THE GUIDELINES OF CI/ASCE 38-02, ENTITLED "STANDARD GUIDELINES FOR THE COLLECTION AND DEPICTION OF EXISTING SUBSURFACE UTILITY DATA."

NOTE: EXISTING UTILITY INFORMATION SHOWN ON THIS PLAN HAS BEEN PROVIDED BY THE UTILITY OWNER. THE CONTRACTOR SHALL FIELD VERIFY EXACT LOCATIONS PRIOR TO COMMENCING CONSTRUCTION AS REQUIRED BY STATE LAW. NOTIFY GOPHER STATE ONE CALL 1-800-252-1166 OR 651-454-0002



Call before you dig  
 811  
 651 454-0002 Metro  
 800 252-1166 Outstate  
[www.gopherstateonecall.org](http://www.gopherstateonecall.org)

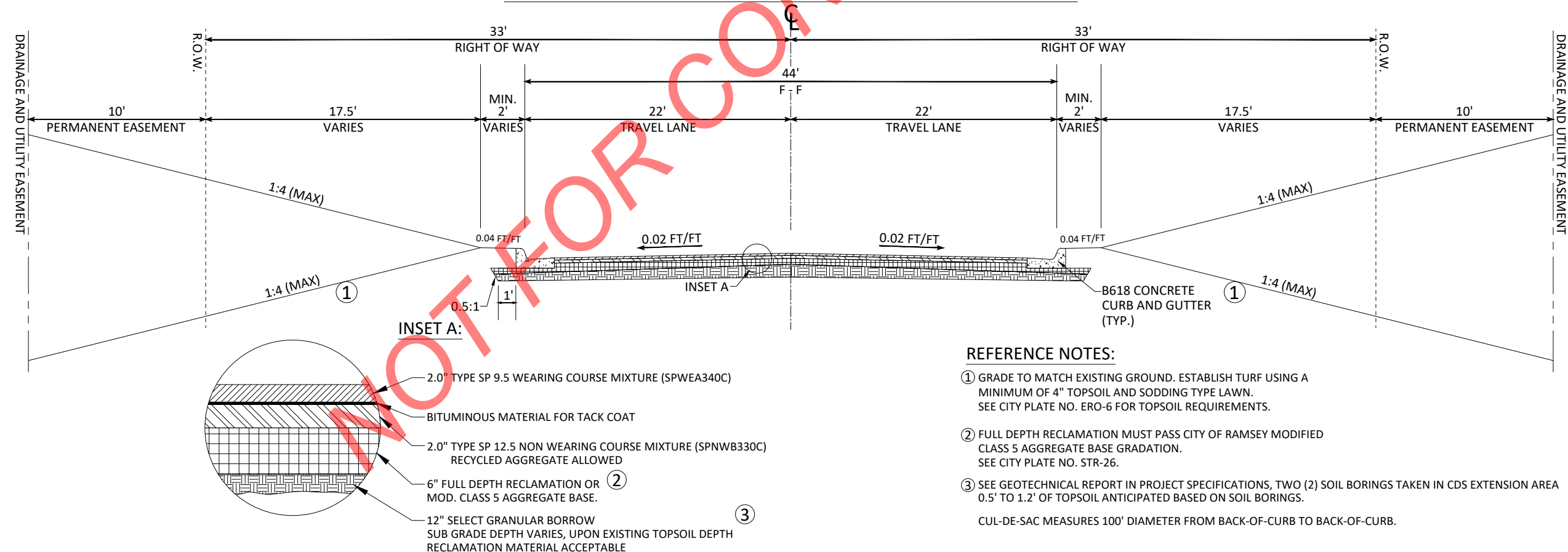
TYPICAL SECTION: FULL-DEPTH RECLAMATION



REFERENCE NOTES:

- ① GRADE TO MATCH EXISTING GROUND. ESTABLISH TURF USING A MINIMUM OF 4" TOPSOIL AND SODDING TYPE LAWN. SEE CITY PLATE NO. ERO-6 FOR TOPSOIL REQUIREMENTS.
- ② FULL DEPTH RECLAMATION MUST PASS CITY OF RAMSEY MODIFIED CLASS 5 AGGREGATE BASE GRADATION. SEE CITY PLATE NO. STR-26.

TYPICAL SECTION: (ALT A) MCKINLEY STREET CDS EXTENSION



REFERENCE NOTES:

- ① GRADE TO MATCH EXISTING GROUND. ESTABLISH TURF USING A MINIMUM OF 4" TOPSOIL AND SODDING TYPE LAWN. SEE CITY PLATE NO. ERO-6 FOR TOPSOIL REQUIREMENTS.
- ② FULL DEPTH RECLAMATION MUST PASS CITY OF RAMSEY MODIFIED CLASS 5 AGGREGATE BASE GRADATION. SEE CITY PLATE NO. STR-26.
- ③ SEE GEOTECHNICAL REPORT IN PROJECT SPECIFICATIONS, TWO (2) SOIL BORINGS TAKEN IN CDS EXTENSION AREA 0.5' TO 1.2' OF TOPSOIL ANTICIPATED BASED ON SOIL BORINGS. CUL-DE-SAC MEASURES 100' DIAMETER FROM BACK-OF-CURB TO BACK-OF-CURB.

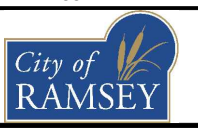
DATE	REVISION

I hereby certify that this plan, specification, or report was prepared by me or under my direct supervision and that I am a duly Licensed Professional Engineer under the laws of the State of Minnesota

*Joe Feriancek*  
 JOE FERIANCEK, P.E.  
 Date 3/9/21 Lic. No. 57095

DESIGNED BY: JJF  
 DRAWN BY: JJF  
 CHECKED BY: BRW

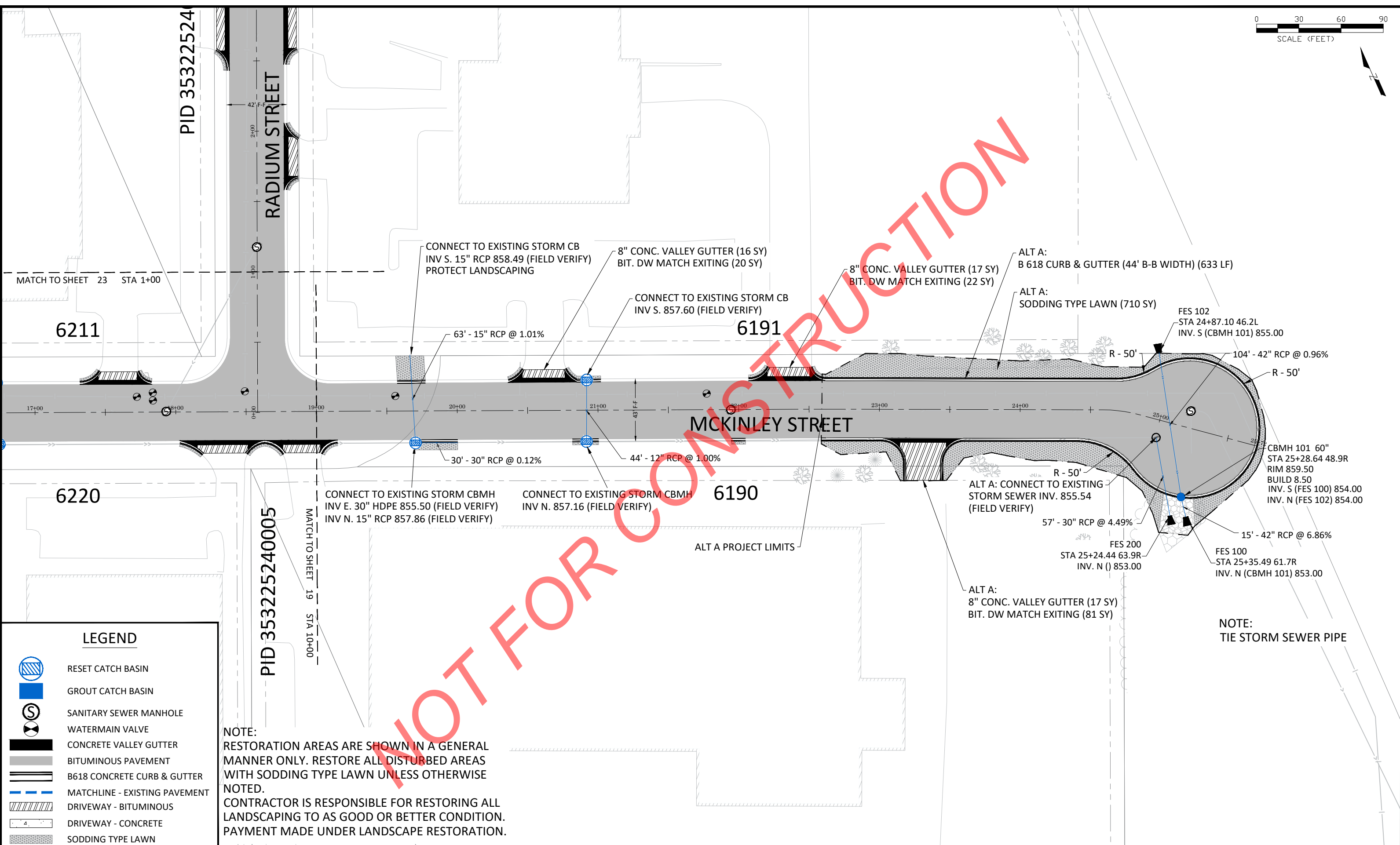
DATE: 3/9/21  
 FILE: 21-03



CITY OF RAMSEY  
 7550 SUNWOOD DRIVE  
 RAMSEY, MN 55303  
 (763) 427-1410 FAX (763) 433-9898

TYPICAL SECTIONS

BUSINESS PARK 95 STREET RECONSTRUCTIONS  
 CITY PROJECT NO. 21-03  
 CITY OF RAMSEY, MINNESOTA



MATCH TO SHEET 23 STA 1+00

MATCH TO SHEET 19 STA 10+00

**LEGEND**

	RESET CATCH BASIN
	GROUT CATCH BASIN
	SANITARY SEWER MANHOLE
	WATERMAIN VALVE
	CONCRETE VALLEY GUTTER
	BITUMINOUS PAVEMENT
	B618 CONCRETE CURB & GUTTER
	MATCHLINE - EXISTING PAVEMENT
	DRIVEWAY - BITUMINOUS
	DRIVEWAY - CONCRETE
	SODDING TYPE LAWN

**NOTE:**  
RESTORATION AREAS ARE SHOWN IN A GENERAL MANNER ONLY. RESTORE ALL DISTURBED AREAS WITH SODDING TYPE LAWN UNLESS OTHERWISE NOTED.  
CONTRACTOR IS RESPONSIBLE FOR RESTORING ALL LANDSCAPING TO AS GOOD OR BETTER CONDITION.  
PAYMENT MADE UNDER LANDSCAPE RESTORATION.

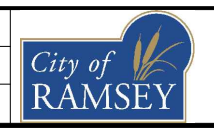
**NOTE:**  
TIE STORM SEWER PIPE

DATE	REVISION

I hereby certify that this plan, specification, or report was prepared by me or under my direct supervision and that I am a duly Licensed Professional Engineer under the laws of the State of Minnesota.

*Joe Feriancek*  
JOE FERIANCEK, P.E.  
Date 3/9/21 Lic. No. 57095

DESIGNED BY:	JJF
DRAWN BY:	JJF
CHECKED BY:	BRW
DATE:	3/9/21
FILE:	21-03



CITY OF RAMSEY  
7550 SUNWOOD DRIVE  
RAMSEY, MN 55303  
(763) 427-1410 FAX (763) 433-9898

STREET IMPROVEMENTS  
MCKINLEY STA. 19+00 TO CDS

BUSINESS PARK 95 STREET RECONSTRUCTIONS  
CITY PROJECT NO. 21-03  
CITY OF RAMSEY, MINNESOTA