

- GENERAL NOTES:**
- S&W — INDICATES SANITARY WATERMAIN SERVICE
 - X+XX — INDICATES SANITARY SERVICE STATION (FROM DOWNSTREAM MANHOLE)
 - XXX.X — INDICATES SERVICE ELEVATION
 - X' RISER — INDICATES RISER HEIGHT (IF NEEDED)

- GENERAL NOTES**
1. 8" WM SHALL BE DIP CLASS 52
 2. 6" WM SHALL BE DIP CLASS 53
 3. SANITARY SERVICES TO BE 4" SDR 26 UNLESS OTHERWISE NOTED
 4. WATERMAIN SERVICES TO BE 1" TYPE K COPPER UNLESS OTHERWISE NOTED

DESCRIPTION	PROPOSED	EXISTING
BUILDING SETBACK LINE	BSBL	BSBL
GARAGE SETBACK LINE	GSBL	GSBL
PARCEL BOUNDARY LINE	PSBL	PSBL
DRAINAGE AND UTILITY EASEMENTS	DE	DE
CURB AND GUTTER	CG	CG
RIGHT-OF-WAY	ROW	ROW
SANWM SERVICE	S&W	S&W
BACKYARD CATCH BASIN	CB	CB
CATCH BASIN	CB	CB
STORM SEWER MANHOLE	SMH	SMH
FLARED END SECTION WRIP-RAP	FER	FER
STORM STRUCTURE LABEL	CB, H3	CB, H3
SANITARY STRUCTURE LABEL	SMH	SMH
SANITARY SEWER MANHOLE	SMH	SMH
WATERMAIN	WM	WM
HYDRANT	H	H
GATE VALVE	GV	GV

EXISTING UTILITIES SHOWN ARE SHOWN IN AN APPROXIMATE WAY ONLY. THE CONTRACTOR SHALL DETERMINE THE EXACT LOCATION OF ANY AND ALL EXISTING UTILITIES BEFORE COMMENCING WORK. HE AGREES TO BE FULLY RESPONSIBLE FOR ANY AND ALL DAMAGES ARISING OUT OF HIS FAILURE TO EXACTLY LOCATE AND PRESERVE ANY AND ALL EXISTING UTILITIES.

DRAWING NAME	NO.	BY	DATE	REVISIONS
FINAL - UTILITY				
DRAWN BY		TCW		
CHECKED BY		ERJ		
DATE			03/28/21	

USE (INCLUDING COPYING, DISTRIBUTION, AND/OR CONVEYANCE OF INFORMATION) OF THIS PRODUCT IS STRICTLY PROHIBITED WITHOUT SATHRE-BERGQUIST, INC.'S EXPRESS WRITTEN AUTHORIZATION. USE WITHOUT SAID AUTHORIZATION CONSTITUTES AN ILLEGITIMATE USE AND SHALL THEREBY INDEMNIFY SATHRE-BERGQUIST, INC. OF ALL RESPONSIBILITY. SATHRE-BERGQUIST, INC. RESERVES THE RIGHT TO HOLD ANY ILLEGITIMATE USER OR PARTY LEGALLY RESPONSIBLE FOR DAMAGES OR LOSSES RESULTING FROM ILLEGITIMATE USE.

I HEREBY CERTIFY THAT THIS PLAN OR SPECIFICATION WAS PREPARED BY ME OR UNDER MY DIRECT SUPERVISION AND THAT I AM A DULY REGISTERED PROFESSIONAL ENGINEER UNDER THE LAWS OF THE STATE OF MINNESOTA.

Eric R. Johnson
ERIC R. JOHNSON, P.E.
Date: 03/26/21 Lic. No. 56659

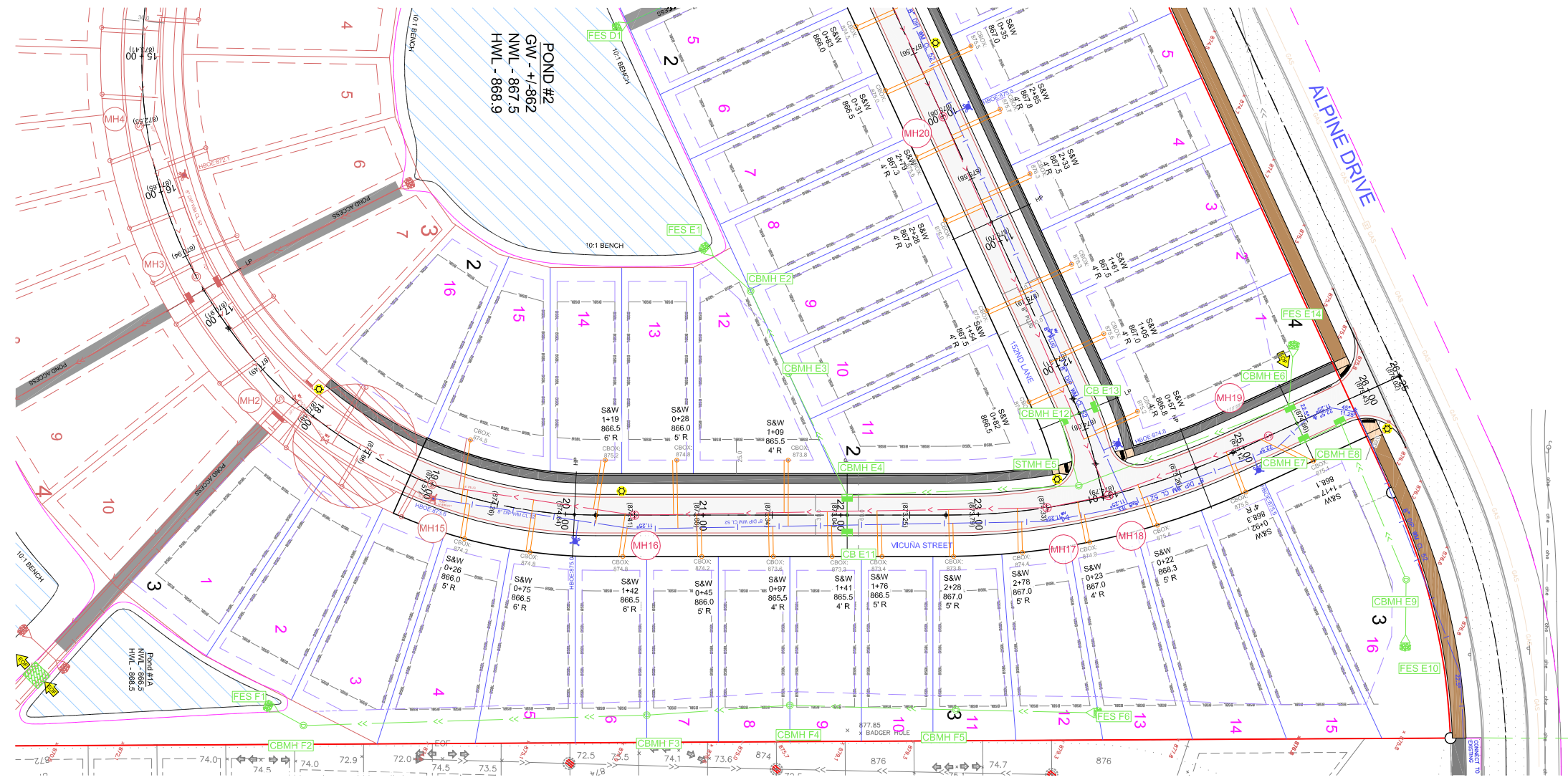
SATHRE-BERGQUIST, INC.
150 SOUTH BROADWAY WAYZATA, MN. 55391 (952) 476-6000

CITY PROJECT NO. —

RAMSEY, MINNESOTA

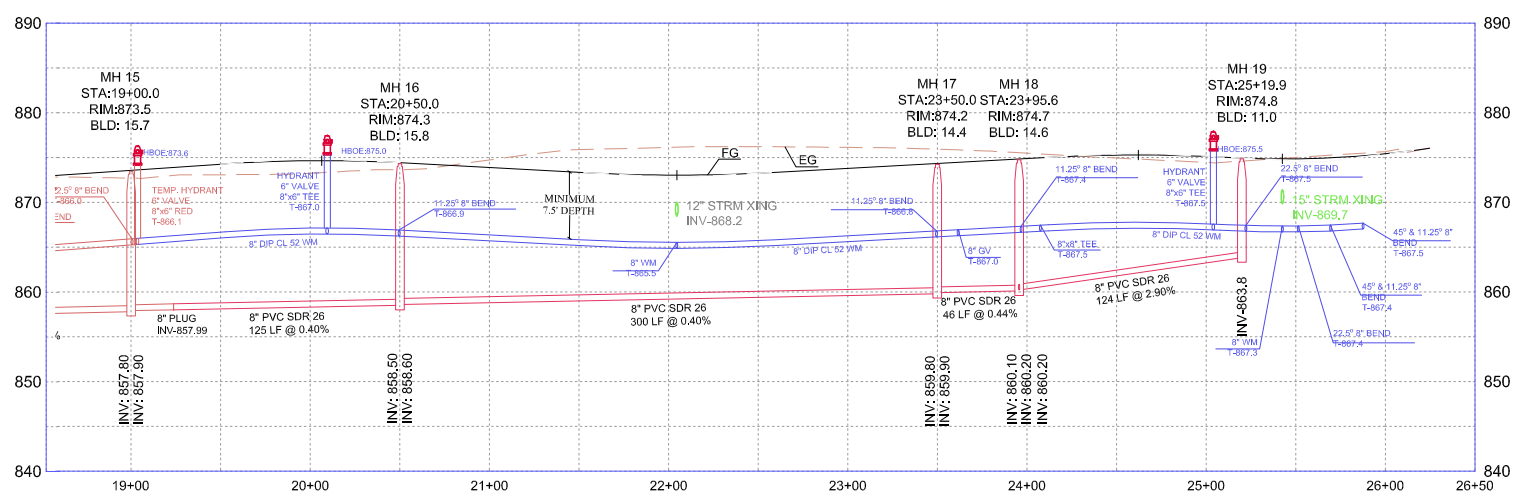
FINAL SANITARY SEWER & WATERMAIN PLAN
THE PRESERVE AT NORTHFORK 2ND ADDITION
BK LAND DEVELOPMENT

FILE NO. 10945-003
6
22

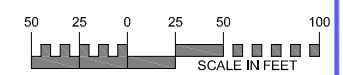
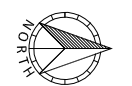
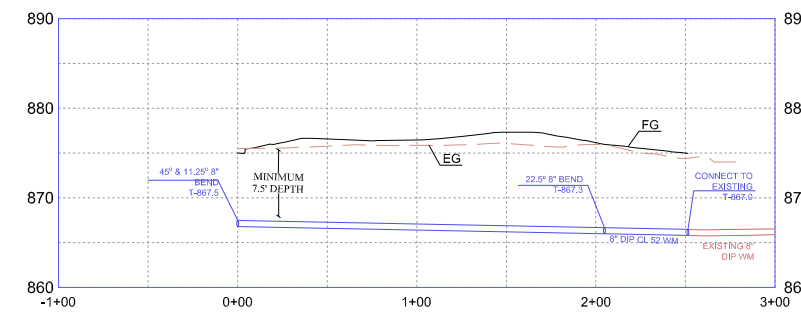


LEGEND		
DESCRIPTION	PROPOSED	EXISTING
BUILDING SETBACK LINE	BSBL	BSBL
GARAGE SETBACK LINE	GSBL	GSBL
PARCEL BOUNDARY LINE		
DRAINAGE AND UTILITY EASEMENTS		
CURB AND GUTTER		
RIGHT-OF-WAY		
SAN/WM SERVICE		
BACKYARD CATCH BASIN		
CATCH BASIN		
STORM SEWER MANHOLE		
FLARED END SECTION WRIP-RAP		
STORM STRUCTURE LABEL	(CB H3)	(CB H3)
SANITARY STRUCTURE LABEL		
SANITARY SEWER MANHOLE		
WATERMAIN		
HYDRANT		
GATE VALVE		

- GENERAL NOTES
1. 8" WM SHALL BE DIP CLASS 52
 2. 6" WM SHALL BE DIP CLASS 53
 3. SANITARY SERVICES TO BE 4" SDR 26 UNLESS OTHERWISE NOTED
 4. WATERMAIN SERVICES TO BE 1" TYPE K COPPER UNLESS OTHERWISE NOTED



Alignment - North Wm Connection



EXISTING UTILITIES SHOWN ARE SHOWN IN AN APPROXIMATE WAY ONLY. THE CONTRACTOR SHALL DETERMINE THE EXACT LOCATION OF ANY AND ALL EXISTING UTILITIES BEFORE COMMENCING WORK. HE AGREES TO BE FULLY RESPONSIBLE FOR ANY AND ALL DAMAGES ARISING OUT OF HIS FAILURE TO EXACTLY LOCATE AND PRESERVE ANY AND ALL EXISTING UTILITIES.

DRAWING NAME	NO.	BY	DATE	REVISIONS
FINAL - UTILITY				
DRAWN BY				
TOW				
CHECKED BY				
ERJ				
DATE				
03/26/21				

USE (INCLUDING COPYING, DISTRIBUTION, AND/OR CONVEYANCE OF INFORMATION) OF THIS PRODUCT IS STRICTLY PROHIBITED WITHOUT SATHRE-BERGQUIST, INC.'S EXPRESS WRITTEN AUTHORIZATION. USE WITHOUT SAID AUTHORIZATION CONSTITUTES AN ILLEGITIMATE USE AND SHALL THEREBY INDEMNIFY SATHRE-BERGQUIST, INC. OF ALL RESPONSIBILITY. SATHRE-BERGQUIST, INC. RESERVES THE RIGHT TO HOLD ANY ILLEGITIMATE USER OR PARTY LEGALLY RESPONSIBLE FOR DAMAGES OR LOSSES RESULTING FROM ILLEGITIMATE USE.

I HEREBY CERTIFY THAT THIS PLAN OR SPECIFICATION WAS PREPARED BY ME OR UNDER MY DIRECT SUPERVISION AND THAT I AM A DULY REGISTERED PROFESSIONAL ENGINEER UNDER THE LAWS OF THE STATE OF MINNESOTA.

Eric R. Johnson
 ERIC R. JOHNSON, P.E.
 Date: 03/26/21 Lic. No. 56659

ENGINEERS SURVEYORS
 DESIGNERS PLANNERS

SATHRE-BERGQUIST, INC.
 150 SOUTH BROADWAY WAYZATA, MN, 55391 (952) 476-6000

CITY PROJECT NO.
 --

RAMSEY, MINNESOTA

FINAL SANITARY SEWER & WATERMAIN PLAN
 THE PRESERVE AT NORTHFORK 2ND ADDITION
 BK LAND DEVELOPMENT

FILE NO.
 10945-003

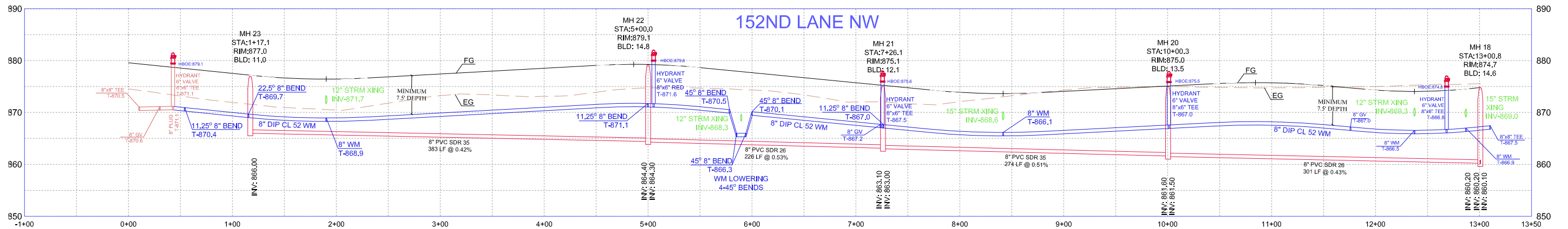
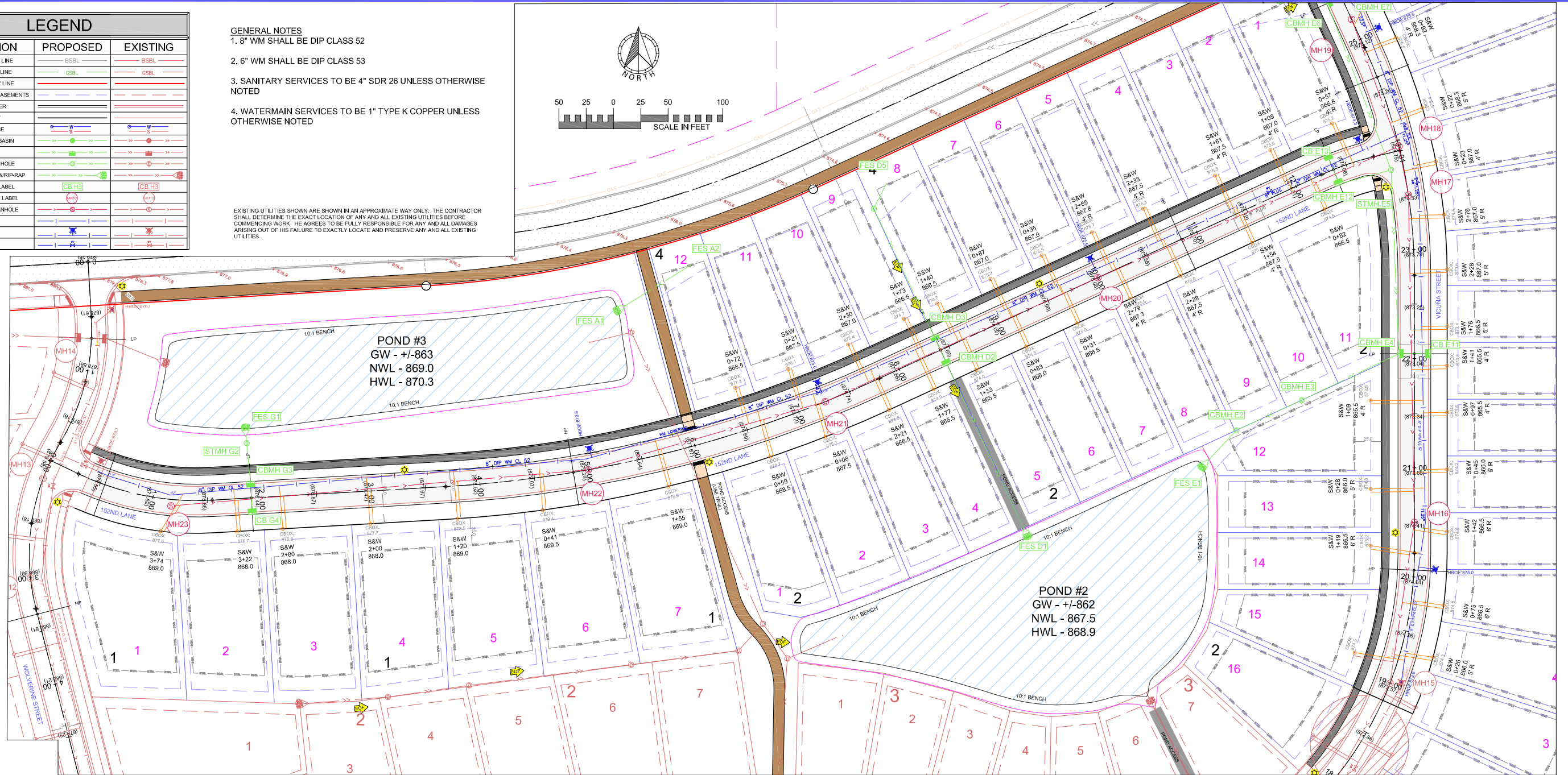
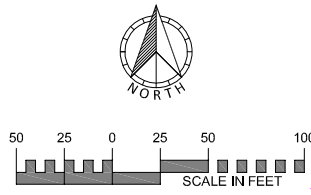
7

22

LEGEND		
DESCRIPTION	PROPOSED	EXISTING
BUILDING SETBACK LINE	BSBL	BSBL
GARAGE SETBACK LINE	GSBL	GSBL
PARCEL BOUNDARY LINE		
DRAINAGE AND UTILITY EASEMENTS		
CURB AND GUTTER		
RIGHT-OF-WAY		
SANW/M SERVICE		
BACKYARD CATCH BASIN		
CATCH BASIN		
STORM SEWER MANHOLE		
FLARED END SECTION WRAP-RAP		
STORM STRUCTURE LABEL	CB H3	CB H3
SANITARY STRUCTURE LABEL		
SANITARY SEWER MANHOLE		
WATERMAIN		
HYDRANT		
GATE VALVE		

- GENERAL NOTES**
1. 8" WM SHALL BE DIP CLASS 52
 2. 6" WM SHALL BE DIP CLASS 53
 3. SANITARY SERVICES TO BE 4" SDR 26 UNLESS OTHERWISE NOTED
 4. WATERMAIN SERVICES TO BE 1" TYPE K COPPER UNLESS OTHERWISE NOTED

EXISTING UTILITIES SHOWN ARE SHOWN IN AN APPROXIMATE WAY ONLY. THE CONTRACTOR SHALL DETERMINE THE EXACT LOCATION OF ANY AND ALL EXISTING UTILITIES BEFORE COMMENCING WORK. HE AGREES TO BE FULLY RESPONSIBLE FOR ANY AND ALL DAMAGES ARISING OUT OF HIS FAILURE TO EXACTLY LOCATE AND PRESERVE ANY AND ALL EXISTING UTILITIES.



DRAWING NAME	NO.	BY	DATE	REVISIONS
FINAL - UTILITY				
DRAWN BY				
TCW				
CHECKED BY				
ERJ				
DATE				
03/26/21				

USE (INCLUDING COPYING, DISTRIBUTION, AND/OR CONVEYANCE OF INFORMATION) OF THIS PRODUCT IS STRICTLY PROHIBITED WITHOUT SATHRE-BERGQUIST, INC.'S EXPRESS WRITTEN AUTHORIZATION. USE WITHOUT SAID AUTHORIZATION CONSTITUTES AN ILLEGITIMATE USE AND SHALL THEREBY INDEMNIFY SATHRE-BERGQUIST, INC. OF ALL RESPONSIBILITY. SATHRE-BERGQUIST, INC. RESERVES THE RIGHT TO HOLD ANY ILLEGITIMATE USER OR PARTY LEGALLY RESPONSIBLE FOR DAMAGES OR LOSSES RESULTING FROM ILLEGITIMATE USE.

I HEREBY CERTIFY THAT THIS PLAN OR SPECIFICATION WAS PREPARED BY ME OR UNDER MY DIRECT SUPERVISION AND THAT I AM A DULY REGISTERED PROFESSIONAL ENGINEER UNDER THE LAWS OF THE STATE OF MINNESOTA.

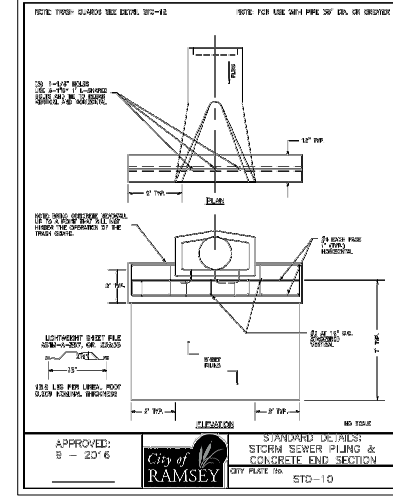
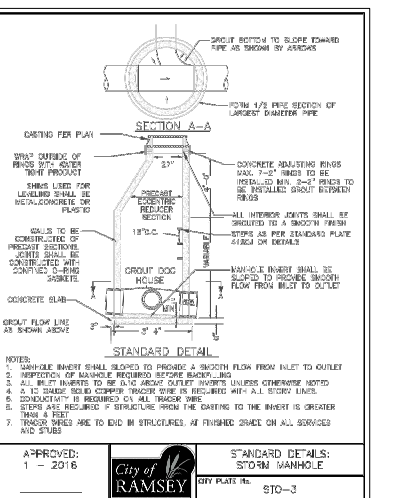
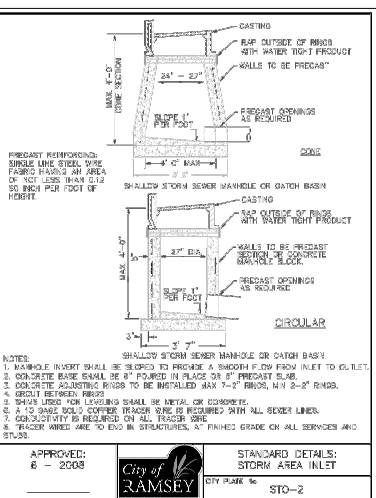
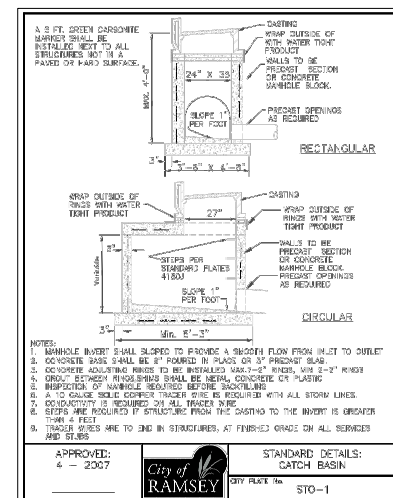
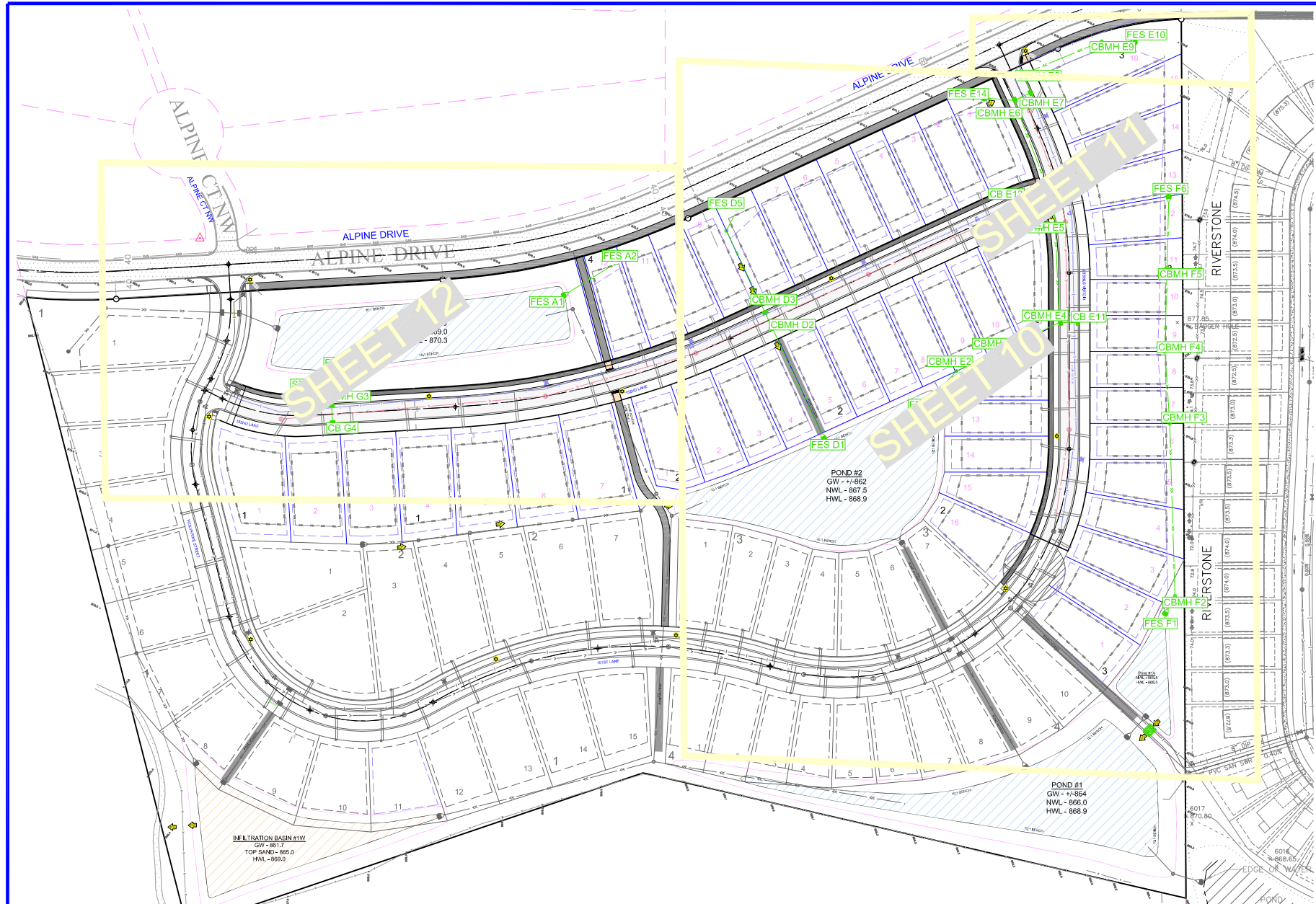
Eric R. Johnson
ERIC R. JOHNSON, P.E.
Date: 03/26/21 Lic. No. 56659

SATHRE-BERGQUIST, INC.
150 SOUTH BROADWAY WAYZATA, MN, 55391 (952) 476-6000

CITY PROJECT NO. ---
RAMSEY, MINNESOTA

FINAL SANITARY SEWER & WATERMAIN PLAN
THE PRESERVE AT NORTHFORK 2ND ADDITION
BK LAND DEVELOPMENT

FILE NO. 10945-003
8
22



STRUCTURE TABLE						
STRUCTURE NAME	TYPE	DIAMETER	RIM	BUILD	INV	CASTING
CB B3	CB	48.0"	872.4	4.0'	868.4	R-3067
CB C6	CB	27.0"	873.9	3.4'	870.5	R-3067
CB E11	CB	48.0"	872.7	4.0'	868.7	R-3067
CB H3	CB	48.0"	875.3	4.1'	871.2	R-3067
CBMH B2	CBMH	48.0"	870.0	3.5'	866.5	R-2570
CBMH C3	CBMH	27.0"	878.2	12.0'	866.2	R-2570
CBMH C4	CBMH	48.0"	878.4	8.9'	869.5	R-2570
CBMH C5	CBMH	48.0"	884.0	13.9'	870.1	R-2570
CBMH E2	CBMH	48.0"	870.9	3.3'	867.6	R-3067
CBMH E3	CBMH	48.0"	871.0	3.0'	868.0	R-1733
CBMH E4	CBMH	48.0"	872.7	7.3'	865.4	R-3067
CBMH E6	CBMH	48.0"	874.6	4.8'	869.8	R-3067
CBMH E7	CBMH	48.0"	874.6	4.5'	870.1	R-3067
CBMH E8	CBMH	48.0"	874.5	4.2'	870.3	R-2570
CBMH E9	CBMH	2'x3'	874.5	3.8'	870.7	R-3067
CBMH F2	CBMH	48.0"	871.0	3.9'	867.1	R-2570
CBMH F3	CBMH	48.0"	871.5	3.4'	868.1	R-2570
CBMH F4	CBMH	48.0"	872.0	3.4'	868.6	R-2570
CBMH F5	CBMH	48.0"	873.4	3.8'	869.6	R-2570
CBMH H2	CBMH	48.0"	875.3	8.7'	866.6	R-3067
CBMH O2	CBMH	2'x3'	870.6	7.0'	863.6	R-3067
CBMH O3	CBMH	48.0"	870.6	3.8'	866.8	R-2570
CBMH O14	CBMH	48.0"	872.7	5.1'	867.6	R-2570
CBMH O16	CBMH	48.0"	871.5	3.7'	867.8	R-1733
CBMH O17	CBMH	48.0"	871.4	3.2'	868.2	R-2570
CBMH O18	CBMH	48.0"	872.5	3.7'	868.8	R-2570
CBMH O19	CBMH	48.0"	873.0	3.8'	869.2	R-2570
STMH E5	STMH	48.0"	874.4	5.6'	868.8	R-2570
STMH O6	STMH	48.0"	870.0	4.1'	865.9	R-2570

FES TABLE				
Structure Name	TYPE	SIZE (IN.)	INV	C.Y. RIP RAP
FES B1	FES	15	865.0	5
FES C1	FES	18	869.0	7
FES E1	FES	21	867.5	7
FES E10	FES	15	872.5	5
FES F1	FES	15	867.0	5
FES F6	FES	15	873.0	5
FES H1	FES	15	865.0	5
FES O1	FES	18	866.0	7
FES O4	FES	18	868.9	7
FES O5	FES	27	865.0	9
FES O8	FES	24	864.5	9
FES O9	FES	15	866.0	5
FES O10	FES	15	866.5	5
FES O11	FES	15	866.5	5
FES O13	FES	24	864.0	7
FES O20	FES	15	871.0	5

OUTLET STRUCTURE TABLE			
Structure Name	TYPE	INV	DETAIL
OCS O7	OCS	865.50 867.50 866.70	SEE STRUCTURE DETAIL
OCS O12	OCS	864.00 866.60	SEE STRUCTURE DETAIL

- GENERAL NOTES:**
- ALL STORM SEWER INSTALLED SHALL HAVE POSITIVE GRADE
 - ALL CATCH BASIN CASTINGS IN CURBS SHALL BE SUMPED 0.10 FEET AND MANHOLE CASTINGS IN PAVED AREAS SHALL BE SUMPED 0.05 FEET.
 - TIE LAST 3 PIPE JOINTS FROM ALL FLARED END STRUCTURES.

LEGEND		
DESCRIPTION	PROPOSED	EXISTING
BUILDING SETBACK LINE	BSBL	BSBL
GARAGE SETBACK LINE	GSBL	GSBL
PARCEL BOUNDARY LINE	CSBL	CSBL
DRAINAGE AND UTILITY EASEMENTS		
CURB AND GUTTER		
RIGHT-OF-WAY		
SANITARY SERVICE		
BACKYARD CATCH BASIN		
CATCH BASIN		
STORM SEWER MANHOLE		
FLARED END SECTION WRIP-RAP		
STORM STRUCTURE LABEL	CB H3	CB H3
SANITARY STRUCTURE LABEL		
SANITARY SEWER MANHOLE		
WATERMAIN		
HYDRANT		
GATE VALVE		

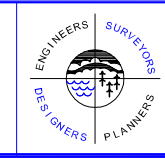
EXISTING UTILITIES SHOWN ARE SHOWN IN AN APPROXIMATE WAY ONLY. THE CONTRACTOR SHALL DETERMINE THE EXACT LOCATION OF ANY AND ALL EXISTING UTILITIES BEFORE COMMENCING WORK. HE AGREES TO BE FULLY RESPONSIBLE FOR ANY AND ALL DAMAGES ARISING OUT OF HIS FAILURE TO EXACTLY LOCATE AND PRESERVE ANY AND ALL EXISTING UTILITIES.

DRAWING NAME	NO.	BY	DATE	REVISIONS
FINAL - UTILITY				
DRAWN BY				
TOW				
CHECKED BY				
ERJ				
DATE				
03/26/21				

USE (INCLUDING COPYING, DISTRIBUTION, AND/OR CONVEYANCE OF INFORMATION) OF THIS PRODUCT IS STRICTLY PROHIBITED WITHOUT SATHRE-BERGQUIST, INC.'S EXPRESS WRITTEN AUTHORIZATION. USE WITHOUT SAID AUTHORIZATION CONSTITUTES AN ILLEGITIMATE USE AND SHALL THEREBY INDEMNIFY SATHRE-BERGQUIST, INC. OF ALL RESPONSIBILITY. SATHRE-BERGQUIST, INC. RESERVES THE RIGHT TO HOLD ANY ILLEGITIMATE USER OR PARTY LEGALLY RESPONSIBLE FOR DAMAGES OR LOSSES RESULTING FROM ILLEGITIMATE USE.

I HEREBY CERTIFY THAT THIS PLAN OR SPECIFICATION WAS PREPARED BY ME OR UNDER MY DIRECT SUPERVISION AND THAT I AM A DULY REGISTERED PROFESSIONAL ENGINEER UNDER THE LAWS OF THE STATE OF MINNESOTA.

Eric R. Johnson
ERIC R. JOHNSON, P.E.
Date: 03/26/21 Lic. No. 56659

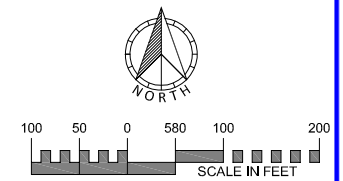


SATHRE-BERGQUIST, INC.
150 SOUTH BROADWAY WAYZATA, MN. 55391 (952) 476-6000

CITY PROJECT NO. ---
RAMSEY, MINNESOTA

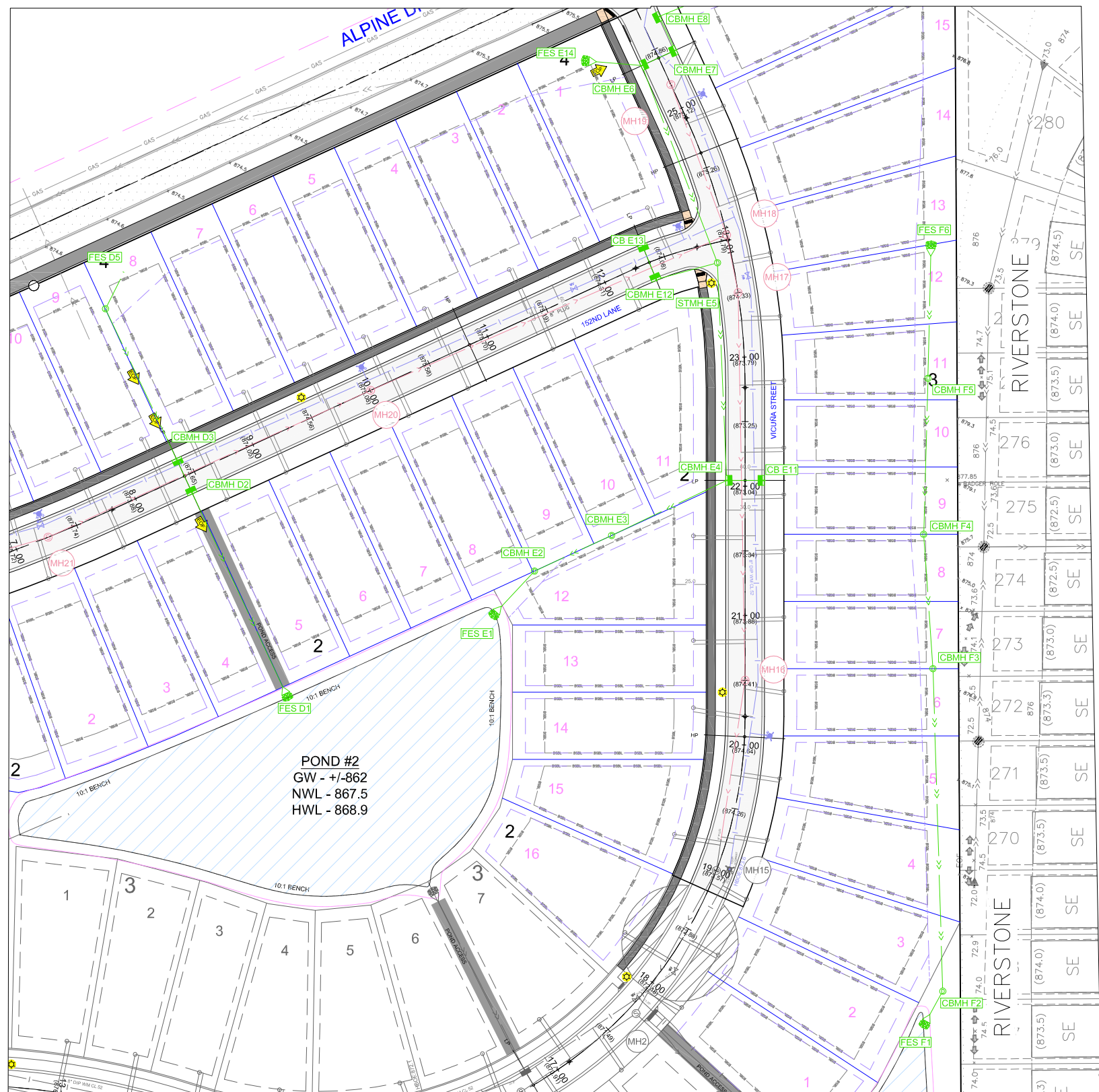
FINAL STORM SEWER PLAN
THE PRESERVE AT NORTHFORK 2ND ADDITION
BK LAND DEVELOPMENT

FILE NO. 10945-003
9
22

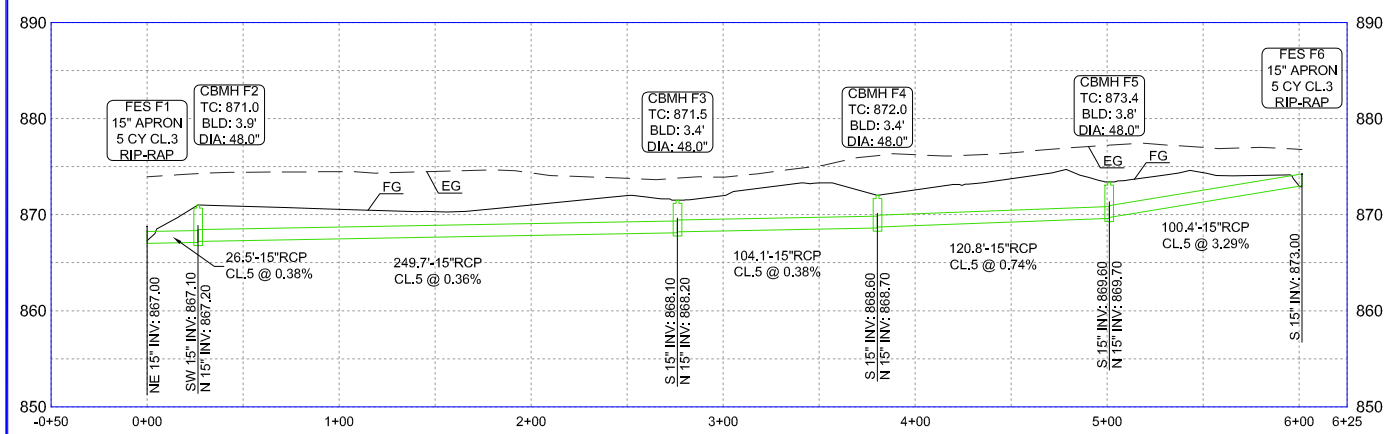
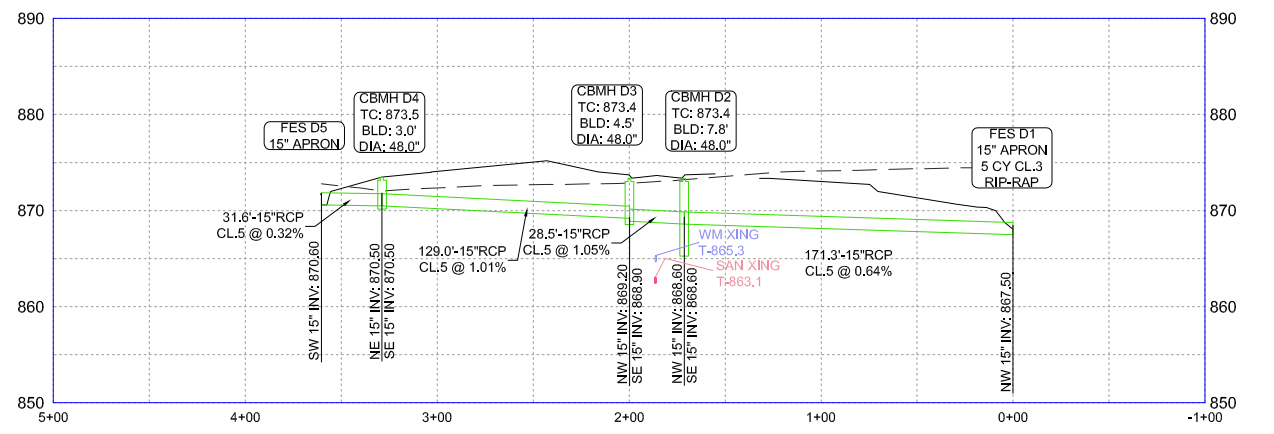


SEE SHEET 11

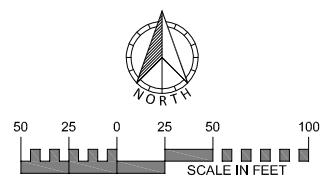
SEE SHEET 11



POND #2
 GW - +/-862
 NWL - 867.5
 HWL - 868.9



LEGEND		
DESCRIPTION	PROPOSED	EXISTING
BUILDING SETBACK LINE	BSBL	BSBL
GARAGE SETBACK LINE	GSBL	GSBL
PARCEL BOUNDARY LINE	PSBL	PSBL
DRAINAGE AND UTILITY EASEMENTS	DE	DE
CURB AND GUTTER	CG	CG
RIGHT-OF-WAY	ROW	ROW
SANWM SERVICE	S	S
BACKYARD CATCH BASIN	BCB	BCB
CATCH BASIN	CB	CB
STORM SEWER MANHOLE	SMH	SMH
FLARED END SECTION WRIP-RAP	FER	FER
STORM STRUCTURE LABEL	CB H3	CB H3
SANITARY STRUCTURE LABEL	SMH	SMH
SANITARY SEWER MANHOLE	SSMH	SSMH
WATERMAIN	W	W
HYDRANT	H	H
GATE VALVE	GV	GV

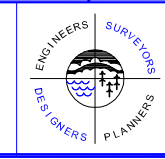


DRAWING NAME	NO.	BY	DATE	REVISIONS
FINAL - UTILITY				
DRAWN BY				
TCW				
CHECKED BY				
ERJ				
DATE				
03/28/21				

USE (INCLUDING COPYING, DISTRIBUTION, AND/OR CONVEYANCE OF INFORMATION) OF THIS PRODUCT IS STRICTLY PROHIBITED WITHOUT SATHRE-BERGQUIST, INC.'S EXPRESS WRITTEN AUTHORIZATION. USE WITHOUT SAID AUTHORIZATION CONSTITUTES AN ILLEGITIMATE USE AND SHALL THEREBY INDEMNIFY SATHRE-BERGQUIST, INC. OF ALL RESPONSIBILITY. SATHRE-BERGQUIST, INC. RESERVES THE RIGHT TO HOLD ANY ILLEGITIMATE USER OR PARTY LEGALLY RESPONSIBLE FOR DAMAGES OR LOSSES RESULTING FROM ILLEGITIMATE USE.

I HEREBY CERTIFY THAT THIS PLAN OR SPECIFICATION WAS PREPARED BY ME OR UNDER MY DIRECT SUPERVISION AND THAT I AM A DULY REGISTERED PROFESSIONAL ENGINEER UNDER THE LAWS OF THE STATE OF MINNESOTA.

Eric R. Johnson
 ERIC R. JOHNSON, P.E.
 Date: 03/26/21 Lic. No. 56659

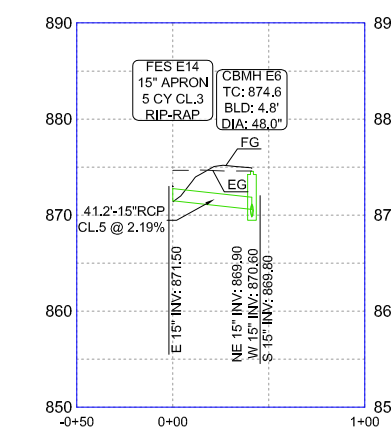
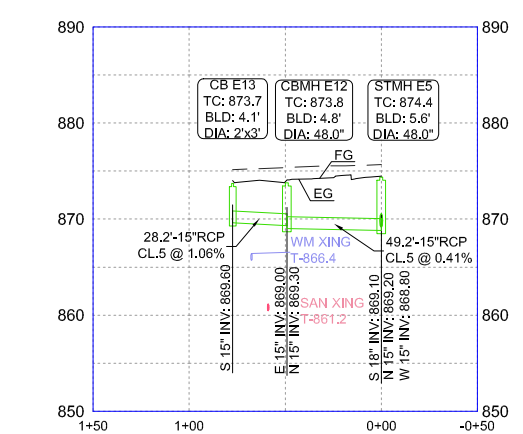
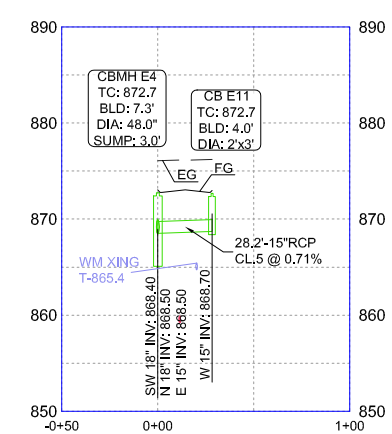
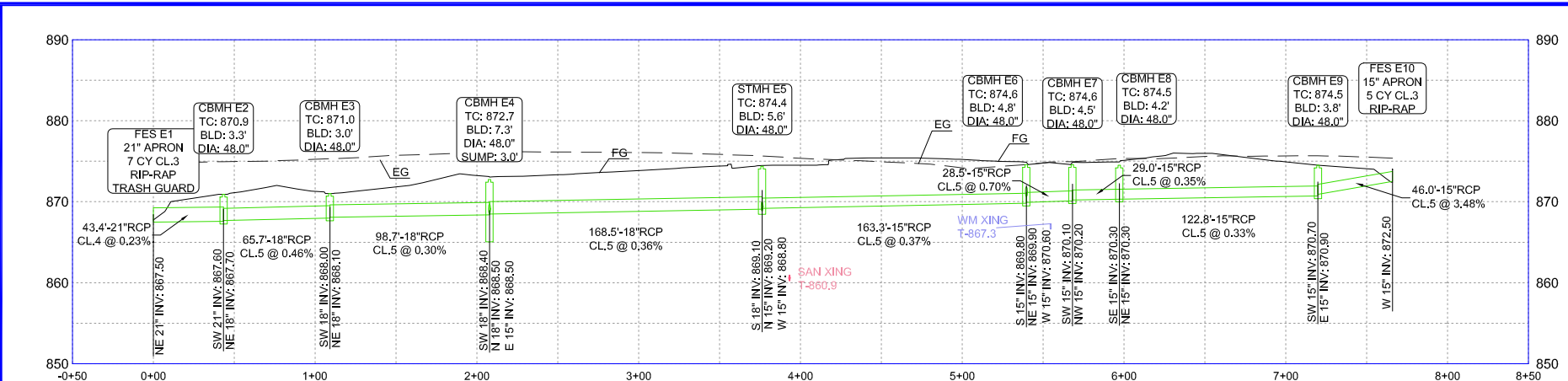
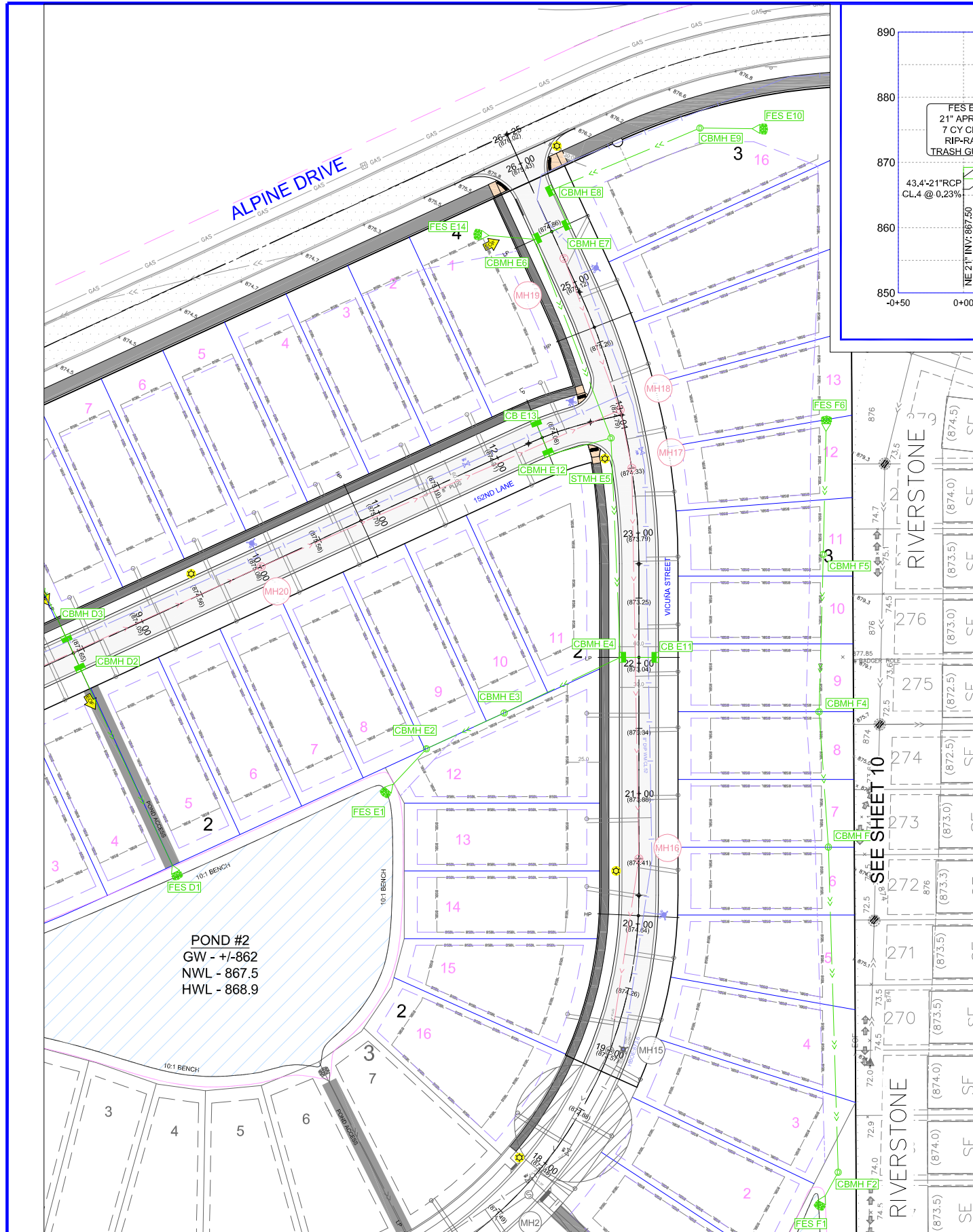


SATHRE-BERGQUIST, INC.
 150 SOUTH BROADWAY WAYZATA, MN. 55391 (952) 476-6000

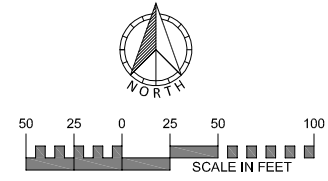
CITY PROJECT NO.
 --
RAMSEY, MINNESOTA

FINAL STORM SEWER PLAN
 THE PRESERVE AT NORTHFORK 2ND ADDITION
 BK LAND DEVELOPMENT

FILE NO.
 10945-003
10
22



LEGEND		
DESCRIPTION	PROPOSED	EXISTING
BUILDING SETBACK LINE	BSBL	BSBL
GARAGE SETBACK LINE	GSBL	GSBL
PARCEL BOUNDARY LINE		
DRAINAGE AND UTILITY EASEMENTS		
CURB AND GUTTER		
RIGHT-OF-WAY		
SAN/WM SERVICE		
BACKYARD CATCH BASIN		
CATCH BASIN		
STORM SEWER MANHOLE		
FLARED END SECTION WRIP-RAP		
STORM STRUCTURE LABEL	CB H3	CB H3
SANITARY STRUCTURE LABEL		
SANITARY SEWER MANHOLE		
WATERMAIN		
HYDRANT		
GATE VALVE		



EXISTING UTILITIES SHOWN ARE SHOWN IN AN APPROXIMATE WAY ONLY. THE CONTRACTOR SHALL DETERMINE THE EXACT LOCATION OF ANY AND ALL EXISTING UTILITIES BEFORE COMMENCING WORK. HE AGREES TO BE FULLY RESPONSIBLE FOR ANY AND ALL DAMAGES ARISING OUT OF HIS FAILURE TO EXACTLY LOCATE AND PRESERVE ANY AND ALL EXISTING UTILITIES.

DRAWING NAME	NO.	BY	DATE	REVISIONS
FINAL - UTILITY				
DRAWN BY				
TCW				
CHECKED BY				
ERJ				
DATE				
03/28/21				

USE (INCLUDING COPYING, DISTRIBUTION, AND/OR CONVEYANCE OF INFORMATION) OF THIS PRODUCT IS STRICTLY PROHIBITED WITHOUT SATHRE-BERGQUIST, INC.'S EXPRESS WRITTEN AUTHORIZATION. USE WITHOUT SAID AUTHORIZATION CONSTITUTES AN ILLEGITIMATE USE AND SHALL THEREBY INDEMNIFY SATHRE-BERGQUIST, INC. OF ALL RESPONSIBILITY. SATHRE-BERGQUIST, INC. RESERVES THE RIGHT TO HOLD ANY ILLEGITIMATE USER OR PARTY LEGALLY RESPONSIBLE FOR DAMAGES OR LOSSES RESULTING FROM ILLEGITIMATE USE.

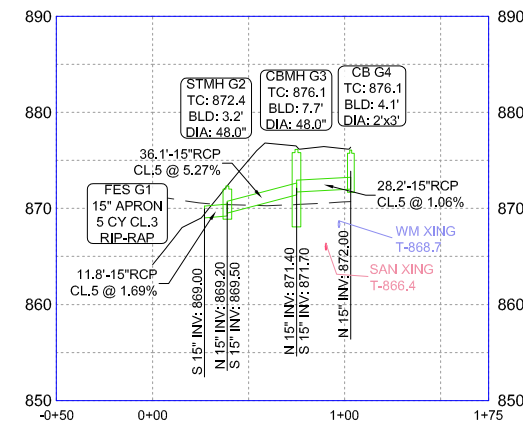
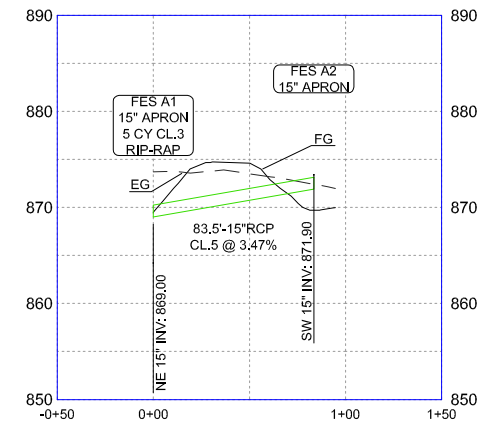
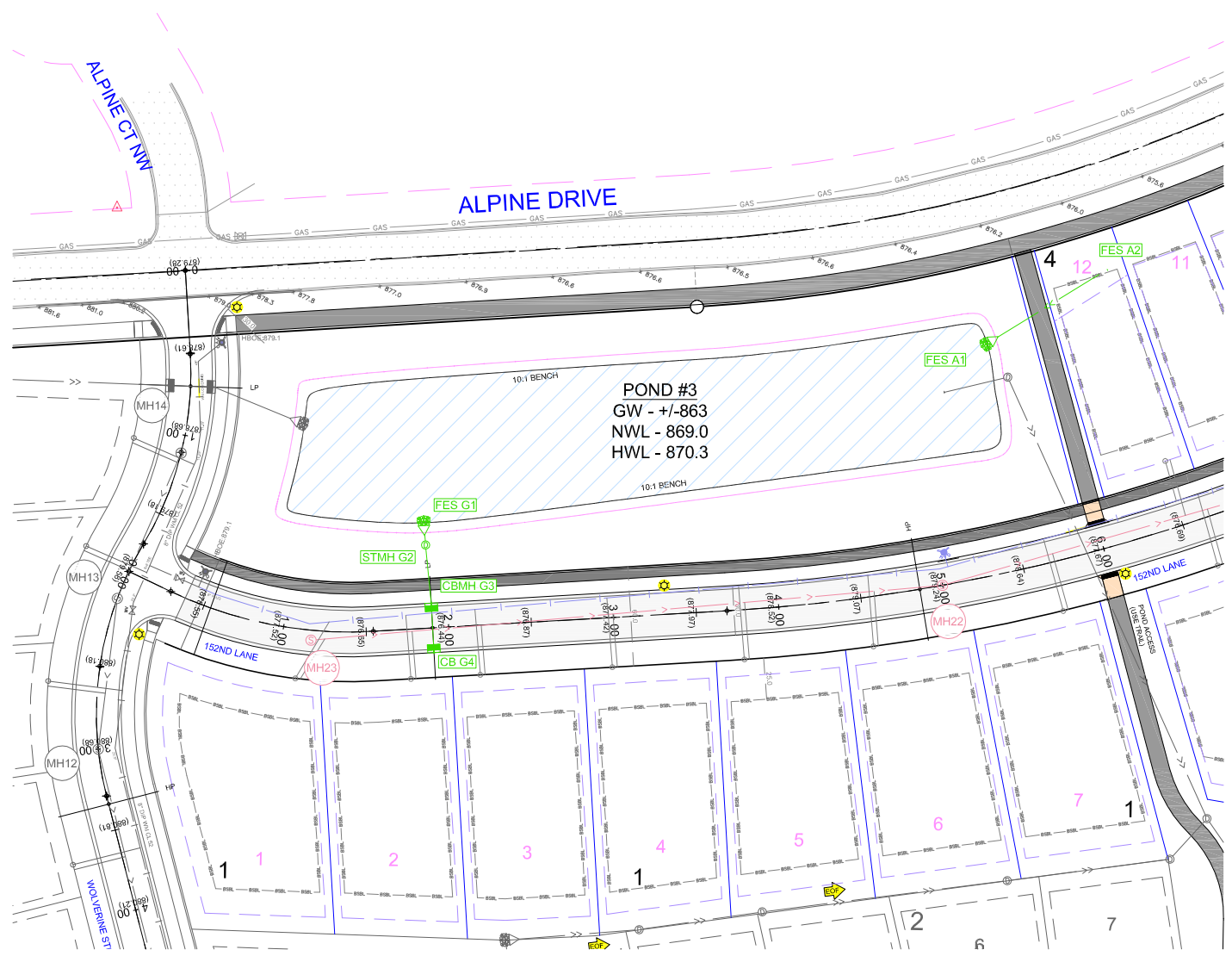
I HEREBY CERTIFY THAT THIS PLAN OR SPECIFICATION WAS PREPARED BY ME OR UNDER MY DIRECT SUPERVISION AND THAT I AM A DULY REGISTERED PROFESSIONAL ENGINEER UNDER THE LAWS OF THE STATE OF MINNESOTA.

Eric R. Johnson
ERIC R. JOHNSON, P.E.
Date: 03/26/21 Lic. No. 56659

ENGINEERS SURVEYORS
DESIGNERS PLANNERS

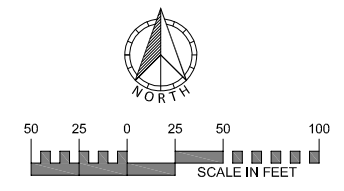
SATHRE-BERGQUIST, INC.
150 SOUTH BROADWAY WAYZATA, MN. 55391 (952) 476-6000

CITY PROJECT NO.	RAMSEY, MINNESOTA	FILE NO.	10945-003
			11
			22
FINAL STORM SEWER PLAN		THE PRESERVE AT NORTHFORK 2ND ADDITION	
		BK LAND DEVELOPMENT	



SEE SHEET 11

LEGEND		
DESCRIPTION	PROPOSED	EXISTING
BUILDING SETBACK LINE	BSBL	BSBL
GARAGE SETBACK LINE	CSBL	CSBL
PARCEL BOUNDARY LINE	CSBL	CSBL
DRAINAGE AND UTILITY EASEMENTS		
CURB AND GUTTER		
RIGHT-OF-WAY		
SANWWM SERVICE	S	S
BACKYARD CATCH BASIN		
CATCH BASIN		
STORM SEWER MANHOLE		
FLARED END SECTION WRIP-RAP		
STORM STRUCTURE LABEL	CB H3	CB H3
SANITARY STRUCTURE LABEL	CB H3	CB H3
SANITARY SEWER MANHOLE		
WATERMAIN		
HYDRANT		
GATE VALVE		

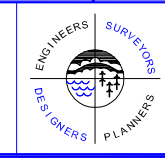


EXISTING UTILITIES SHOWN ARE SHOWN IN AN APPROXIMATE WAY ONLY. THE CONTRACTOR SHALL DETERMINE THE EXACT LOCATION OF ANY AND ALL EXISTING UTILITIES BEFORE COMMENCING WORK. HE AGREES TO BE FULLY RESPONSIBLE FOR ANY AND ALL DAMAGES ARISING OUT OF HIS FAILURE TO EXACTLY LOCATE AND PRESERVE ANY AND ALL EXISTING UTILITIES.

DRAWING NAME	NO.	BY	DATE	REVISIONS
FINAL - UTILITY				
DRAWN BY				
TOW				
CHECKED BY				
ERJ				
DATE				
03/26/21				

USE (INCLUDING COPYING, DISTRIBUTION, AND/OR CONVEYANCE OF INFORMATION) OF THIS PRODUCT IS STRICTLY PROHIBITED WITHOUT SATHRE-BERGQUIST, INC.'S EXPRESS WRITTEN AUTHORIZATION. USE WITHOUT SAID AUTHORIZATION CONSTITUTES AN ILLEGITIMATE USE AND SHALL THEREBY INDEMNIFY SATHRE-BERGQUIST, INC. OF ALL RESPONSIBILITY. SATHRE-BERGQUIST, INC. RESERVES THE RIGHT TO HOLD ANY ILLEGITIMATE USER OR PARTY LEGALLY RESPONSIBLE FOR DAMAGES OR LOSSES RESULTING FROM ILLEGITIMATE USE.

I HEREBY CERTIFY THAT THIS PLAN OR SPECIFICATION WAS PREPARED BY ME OR UNDER MY DIRECT SUPERVISION AND THAT I AM A DULY REGISTERED PROFESSIONAL ENGINEER UNDER THE LAWS OF THE STATE OF MINNESOTA.
Eric R. Johnson
 ERIC R. JOHNSON, P.E.
 Date: 03/26/21 Lic. No. 56659



SATHRE-BERGQUIST, INC.
 150 SOUTH BROADWAY WAYZATA, MN, 55391 (952) 476-6000

CITY PROJECT NO.
 --
RAMSEY, MINNESOTA

FINAL STORM SEWER PLAN
 THE PRESERVE AT NORTHFORK 2ND ADDITION
 BK LAND DEVELOPMENT

FILE NO.
 10945-003
12
22