

MINNESOTA DEPARTMENT OF TRANSPORTATION
CITY OF RAMSEY
ANOKA COUNTY, MINNESOTA
DOLOMITE STREET DEMOLITION
 CITY IMPROVEMENT PROJECT #21-07

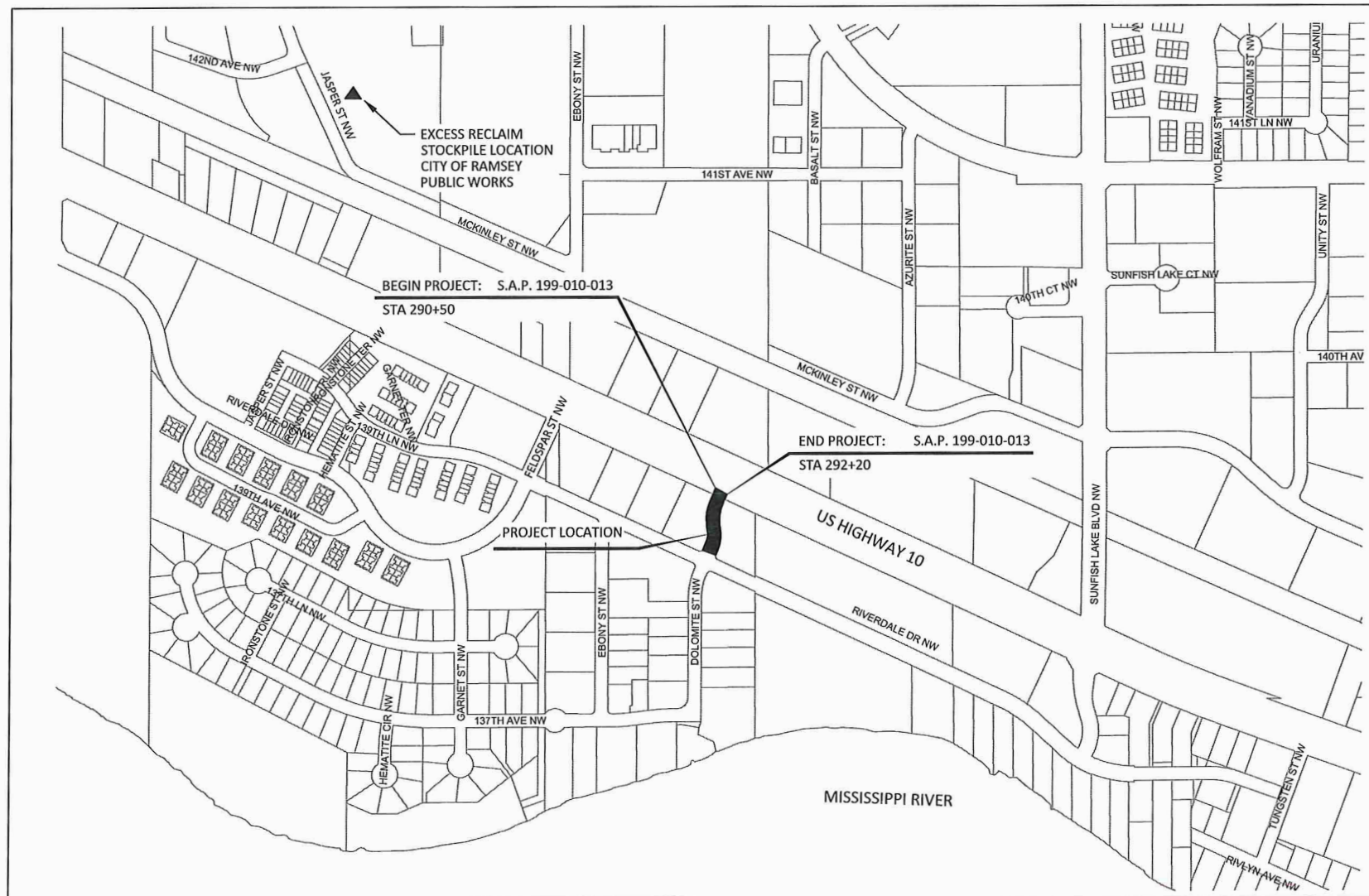
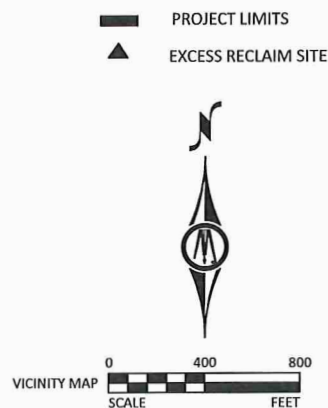
MINN. PROJ. NO. _____ STATE FUNDS _____

--- GOVERNING SPECIFICATIONS ---
 THE 2018 EDITION OF THE MINNESOTA DEPARTMENT OF TRANSPORTATION
 "STANDARD SPECIFICATION FOR CONSTRUCTION" SHALL GOVERN.
 ALL TRAFFIC CONTROL DEVICES AND SIGNING SHALL CONFORM AND BE INSTALLED IN ACCORDANCE
 WITH THE "MINNESOTA MANUAL ON UNIFORM TRAFFIC CONTROL DEVICES" (MN MUTCD) AND
 PART VI, "FIELD MANUAL" FOR TEMPORARY TRAFFIC CONTROL DEVICES.

CONSTRUCTION PLAN FOR: _____ PAVEMENT REMOVAL, GRADING, TURF ESTABLISHMENT AND RELATED APPURTENANCES _____

S.A.P. 199-010-013 LOCATED ON _____ U.S. 10 _____ AT _____ DOLOMITE STREET NW; _____ THE CENTER OF SECTION 34, T32N, R25W

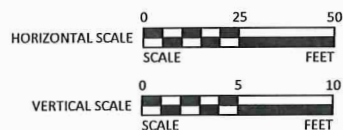
VICINITY MAP



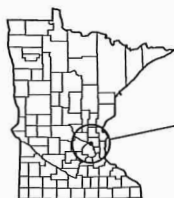
SHEET NUMBER	SHEET TITLE
1	TITLE SHEET
2	LEGEND
3	STATEMENT OF ESTIMATED QUANTITIES, CONSTRUCTION DETAILS
4	TRAFFIC CONTROL
5	SITE PLAN
6	T.H. 10 DITCH CROSS SECTIONS

THIS PLAN SET CONTAINS 6 SHEETS.

TYPICAL PLAN SCALE UNLESS OTHERWISE NOTED:



PROJECT LOCATION



CITY: RAMSEY
 COUNTY: ANOKA
 DISTRICT: METRO

U.S. 10 (S.A.P. 199-010-013)		
GROSS LENGTH	170.0 FEET	0.03 MILES
BRIDGE LENGTH	NA FEET	NA MILES
EXCEPTION LENGTH	NA FEET	NA MILES
NET LENGTH	170.0 FEET	0.03 MILES

LENGTH AND DESCRIPTION BASED UPON EXISTING U.S. 10 EB CENTERLINE

THE SUBSURFACE UTILITY INFORMATION IN THIS PLAN IS UTILITY QUALITY LEVEL D UNLESS OTHERWISE NOTED. THIS UTILITY LEVEL WAS DETERMINED ACCORDING TO THE GUIDELINES OF CI/ASCE 38-02, ENTITLED "STANDARD GUIDELINES FOR THE COLLECTION AND DEPICTION OF EXISTING SUBSURFACE UTILITY DATA."

PROJECT DATUM:
 HORIZONTAL: ANOKA COUNTY COORDINATES (1996 ADJUSTMENT)
 VERTICAL: NGVD 29

RECORD DRAWING INFORMATION
 OBSERVER:
 CONTRACTOR:
 DATE:

DESIGNED	NO.	ISSUED FOR	DATE
ZFL			
ZFL			
KPK			
CLIENT PROJ. NO.	21-07		

Kevin P. Kiel

Kevin P. Kiel, P.E.
 Design Engineer: I hereby certify that this plan was prepared by me or under my direct supervision, and that I am a duly Licensed Professional Engineer under the laws of the State of Minnesota.

Date 4/20/2021 License Number 23211

Bruce W. Jasty

Approved: City of RAMSEY Engineer Date 4/20/21

Julie Drael For

District State Aid Engineer: Review for compliance with State Aid Rules/Policy Date 4/20/2021

Julie Drael For
 Approved for State Aid Funding: State Aid Engineer

CITY OF RAMSEY		SHEET
DOLOMITE STREET DEMOLITION		1
STATE AID PROJECT NO.	S.A.P. 199-010-013	OF
		6



7533 SUNWOOD DR NW, SUITE 206
 RAMSEY, MINNESOTA 55303
 Phone: (763) 433-2851
 Email: Ramsey@bolton-menk.com
 www.bolton-menk.com

EXISTING TOPOGRAPHIC SYMBOLS

	ACCESS GRATE		REGULATION STATION GAS
	AIR CONDITION UNIT		SATELLITE DISH
	ANTENNA		SIGN NON TRAFFIC
	AUTO SPRINKLER CONNECTION		SIGN TRAFFIC
	BARRICADE PERMANENT		SIGNAL CONTROL CABINET
	BASKETBALL POST		SOIL BORING
	BENCH		SIREN
	BIRD FEEDER		TELEPHONE BOOTH
	BOLLARD		TILE INLET
	BUSH		TILE OUTLET
	CATCH BASIN RECTANGULAR CASTING		TILE RISER
	CATCH BASIN CIRCULAR CASTING		TRANSFORMER-ELECTRIC
	CURB STOP		TREE-CONIFEROUS
	CLEAN OUT		TREE-DEAD
	CULVERT END		TREE-DECIDUOUS
	DRINKING FOUNTAIN		TREE STUMP
	DOWN SPOUT		TRAFFIC ARM BARRIER
	FILL PIPE		TRAFFIC SIGNAL
	FIRE HYDRANT		TRASH CAN
	FLAG POLE		UTILITY MARKER
	FLARED END / APRON		VALVE
	FUEL PUMP		VALVE POST INDICATOR
	GRILL		VALVE VAULT
	GUY WIRE ANCHOR		VAULT
	HANDHOLE		VENT PIPE
	HANDICAP SPACE		WATER SPIGOT
	IRRIGATION SPRINKLER HEAD		WELL
	IRRIGATION VALVE BOX		WETLAND DELINEATED MARKER
	LIFT STATION CONTROL PANEL		WETLAND
	LIFT STATION		WET WELL
	LIGHT ON POLE		YARD HYDRANT
	LIGHT-GROUND		
	MAILBOX		

PROPOSED TOPOGRAPHIC SYMBOLS

	CLEANOUT
	MANHOLE
	LIFT STATION
	STORM SEWER CIRCULAR CASTING
	STORM SEWER RECTANGULAR CASTING
	STORM SEWER FLARED END / APRON
	STORM SEWER OUTLET STRUCTURE
	STORM SEWER OVERFLOW STRUCTURE
	CURB BOX
	FIRE HYDRANT
	WATER VALVE
	WATER REDUCER
	WATER BEND
	WATER TEE
	WATER CROSS
	WATER SLEEVE
	WATER CAP / PLUG
	RIP RAP
	DRAINAGE FLOW
	TRAFFIC SIGNS

SURVEY SYMBOLS

	BENCHMARK LOCATION
	CONTROL POINT
	MONUMENT FOUND
	CAST IRON MONUMENT
	STONE MONUMENT

EXISTING TOPOGRAPHIC LINES

	RETAINING WALL
	FENCE
	FENCE-DECORATIVE
	GUARD RAIL
	TREE LINE
	BUSH LINE

SURVEY LINES

	CONTROLLED ACCESS BOUNDARY
	CENTERLINE
	EXISTING EASEMENT LINE
	PROPOSED EASEMENT LINE
	EXISTING LOT LINE
	PROPOSED LOT LINE
	EXISTING RIGHT-OF-WAY
	PROPOSED RIGHT-OF-WAY
	SETBACK LINE
	SECTION LINE
	QUARTER LINE
	SIXTEENTH LINE
	TEMPORARY EASEMENT

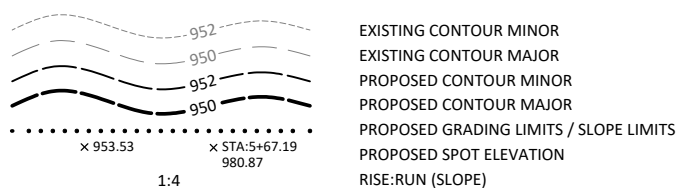
EXISTING UTILITY LINES

	FORCEMAIN
	SANITARY SEWER
	SANITARY SERVICE
	STORM SEWER
	STORM SEWER DRAIN TILE
	WATERMAIN
	WATER SERVICE

PROPOSED UTILITY LINES

	FORCEMAIN
	SANITARY SEWER
	SANITARY SERVICE
	STORM SEWER
	STORM SEWER DRAIN TILE
	WATERMAIN
	WATER SERVICE
	PIPE CASING

GRADING INFORMATION



HATCH PATTERNS

	BITUMINOUS		GRAVEL
	CONCRETE		

EXISTING PRIVATE UTILITY LINES

NOTE:
EXISTING UTILITY INFORMATION SHOWN ON THIS PLAN HAS BEEN PROVIDED BY THE UTILITY OWNER. THE CONTRACTOR SHALL FIELD VERIFY EXACT LOCATIONS PRIOR TO COMMENCING CONSTRUCTION AS REQUIRED BY STATE LAW. NOTIFY GOPHER STATE ONE CALL, 1-800-252-1166 OR 651-454-0002.

THE SUBSURFACE UTILITY INFORMATION IN THIS PLAN IS UTILITY QUALITY LEVEL D UNLESS OTHERWISE NOTED. THIS UTILITY LEVEL WAS DETERMINED ACCORDING TO THE GUIDELINES OF CI/ASCE 38-02, ENTITLED "STANDARD GUIDELINES FOR THE COLLECTION AND DEPICTION OF EXISTING SUBSURFACE UTILITY DATA"

	UNDERGROUND FIBER OPTIC
	UNDERGROUND ELECTRIC
	UNDERGROUND GAS
	UNDERGROUND COMMUNICATION
	OVERHEAD ELECTRIC
	OVERHEAD COMMUNICATION
	OVERHEAD UTILITY

UTILITIES IDENTIFIED WITH A QUALITY LEVEL:

LINE TYPES FOLLOW THE FORMAT: UTILITY TYPE - QUALITY LEVEL
EXAMPLE: UNDERGROUND GAS, QUALITY LEVEL A
UTILITY QUALITY LEVEL (A,B,C,D) DEFINITIONS CAN BE FOUND IN CI/ASCE 38-02.

UTILITY QUALITY LEVELS:

QUALITY LEVEL D: PROVIDES THE MOST BASIC LEVEL OF INFORMATION. IT INVOLVES COLLECTING DATA FROM EXISTING UTILITY RECORDS. RECORDS MAY INCLUDE AS-BUILT DRAWINGS, DISTRIBUTION AND SERVICES MAPS, EXISTING GEOGRAPHIC INFORMATION SYSTEM DATABASES, CONSTRUCTION PLANS, ETC.

QUALITY LEVEL C: INVOLVES SURVEYING VISIBLE SUBSURFACE UTILITY STRUCTURES SUCH AS MANHOLES, HAND-HOLES, UTILITY VALVES AND METERS, FIRE HYDRANTS, PEDESTALS AND UTILITY MARKERS, AND THEN CORRELATING THE INFORMATION WITH EXISTING UTILITY RECORDS TO CREATE COMPOSITE DRAWINGS. INCLUDES QUALITY LEVEL D ACTIVITIES.

QUALITY LEVEL B: INVOLVES DESIGNATING THE HORIZONTAL POSITION OF SUBSURFACE UTILITIES THROUGH SURFACE DETECTION METHODS AND COLLECTING THE INFORMATION THROUGH A SURVEY METHOD. INCLUDES QUALITY LEVEL C AND D TASKS.

QUALITY LEVEL A: PROVIDES THE HIGHEST LEVEL OF ACCURACY. IT INVOLVES LOCATING OR POTHOLING UTILITIES AS WELL AS ACTIVITIES IN QUALITY LEVELS B, C, AND D. THE LOCATED FACILITY INFORMATION IS SURVEYED AND MAPPED AND THE DATA PROVIDES PRECISE PLAN AND PROFILE INFORMATION.

ABBREVIATIONS

A	ALGEBRAIC DIFFERENCE	GRAV	GRAVEL	RSC	RIGID STEEL CONDUIT
ADJ	ADJUST	GU	GUTTER	RT	RIGHT
ALT	ALTERNATE	GV	GATE VALVE	SAN	SANITARY SEWER
B-B	BACK TO BACK	HDPE	HIGH DENSITY POLYETHYLENE	SCH	SCHEDULE
BIT	BITUMINOUS	HH	HANDHOLE	SERV	SERVICE
BLDG	BUILDING	HP	HIGH POINT	SHLD	SHOULDER
BMP	BEST MANAGEMENT PRACTICE	HWL	HIGH WATER LEVEL	STA	STATION
BR	BEGIN RADIUS	HYD	HYDRANT	STD	STANDARD
BV	BUTTERFLY VALVE	I	INVERT	STM	STORM SEWER
CB	CATCH BASIN	K	CURVE COEFFICIENT	TC	TOP OF CURB
C&G	CURB AND GUTTER	L	LENGTH	TE	TEMPORARY EASEMENT
CIP	CAST IRON PIPE	LO	LOWEST OPENING	TEMP	TEMPORARY
CIPP	CURED-IN-PLACE PIPE	LP	LOW POINT	TNH	TOP NUT HYDRANT
CL	CENTER LINE	LT	LEFT	TP	TOP OF PIPE
CL	CLASS	MAX	MAXIMUM	TYP	TYPICAL
CLVT	CULVERT	MH	MANHOLE	VCP	VITRIFIED CLAY PIPE
CMP	CORRUGATED METAL PIPE	MIN	MINIMUM	VERT	VERTICAL
C.O.	CHANGE ORDER	MR	MID RADIUS	VPC	VERTICAL POINT OF CURVE
COMM	COMMUNICATION	NIC	NOT IN CONTRACT	VPI	VERTICAL POINT OF INTERSECTION
CON	CONCRETE	NMC	NON-METALLIC CONDUIT	VPT	VERTICAL POINT OF TANGENT
CSP	CORRUGATED STEEL PIPE	NTS	NOT TO SCALE	WM	WATERMAIN
DIA	DIAMETER	NWL	NORMAL WATER LEVEL		
DIP	DUCTILE IRON PIPE	OHW	ORDINARY HIGH WATER LEVEL		
DWY	DRIVEWAY	PC	POINT OF CURVE	AC	ACRES
E	EXTERNAL CURVE DISTANCE	PCC	POINT OF COMPOUND CURVE	CF	CUBIC FEET
ELEC	ELECTRIC	PE	PERMANENT EASEMENT	CV	COMPACTED VOLUME
ELEV	ELEVATION	PED	PEDESTRIAN, PEDESTAL	CY	CUBIC YARD
EOF	EMERGENCY OVERFLOW	PERF	PERFORATED PIPE	EA	EACH
ER	END RADIUS	PERM	PERMANENT	EV	EXCAVATED VOLUME
ESMT	EASEMENT	PI	POINT OF INTERSECTION	LB	POUND
EX	EXISTING	PL	PROPERTY LINE	LF	LINEAR FEET
FES	FLARED END SECTION	PRC	POINT OF REVERSE CURVE	LS	LUMP SUM
F-F	FACE TO FACE	PT	POINT OF TANGENT	LV	LOOSE VOLUME
FF	FINISHED FLOOR	PVC	POLYVINYL CHLORIDE PIPE	SF	SQUARE FEET
F&I	FURNISH AND INSTALL	PVMT	PAVEMENT	SV	STOCKPILE VOLUME
FM	FORCEMAIN	R	RADIUS	SY	SQUARE YARD
FO	FIBER OPTIC	R/W	RIGHT-OF-WAY		
F.O.	FIELD ORDER	RCP	REINFORCED CONCRETE PIPE		
GRAN	GRANULAR	RET	RETAINING		

© Bolton & Menk, Inc. 2021. All Rights Reserved. File Name: 0411231716-CAD/CD/123170602.dwg 4/20/2021 1:04:56 PM

I HEREBY CERTIFY THAT THIS PLAN, SPECIFICATION, OR REPORT WAS PREPARED BY ME OR UNDER MY DIRECT SUPERVISION AND THAT I AM A DULY LICENSED PROFESSIONAL ENGINEER UNDER THE LAWS OF THE STATE OF MINNESOTA.
Kevin P. Kielb
KEVIN P. KIELB
LIC. NO. 23211 DATE 4/20/2021



7533 SUNWOOD DR NW, SUITE 206
RAMSEY, MINNESOTA 55303
Phone: (763) 433-2851
Email: Ramsey@bolton-menk.com
www.bolton-menk.com

DESIGNED	NO.	ISSUED FOR	DATE
ZFL			
ZFL			
KPK			
CLIENT PROJ. NO.	21-07		

CITY OF RAMSEY	
DOLOMITE STREET DEMOLITION	
LEGEND	
S.A.P. 199-010-013	

SHEET 2 OF 6

STATEMENT OF ESTIMATED QUANTITIES

ITEM NO.	NOTES	MnDOT SPEC NO.	ITEM	UNIT	TOTAL	199-010-013 STATE AID PARTICIPATING	CITY OF RAMSEY (NON-PARTICIPATING)
1		2021.501	MOBILIZATION	LUMP SUM	1	0.60	0.40
2		2104.503	REMOVE PIPE CULVERTS	LIN FT	95	95	
3		2104.503	SAWING BITUMINOUS PAVEMENT (FULL DEPTH)	LIN FT	145	145	
4		2105.507	COMMON EXCAVATION (EV) (P)	CU YD	160	160	
5		2105.607	HAUL & STOCKPILE RECLAIM MATERIAL	CU YD	235		235
6		2118.507	AGGREGATE SURFACING (CV) CLASS 5	CU YD	16	16	
7		2123.610	STREET SWEEPER (WITH PICKUP BROOM)	HOUR	4	4	
8		2215.504	FULL DEPTH RECLAMATION (6") (P)	SQ YD	1,740	360	1,380
9		2533.503	PORTABLE PRECAST CONCRETE BARRIER DES 8337	LIN FT	120	120	
10		2563.601	TRAFFIC CONTROL	LUMP SUM	1	0.90	0.10
11		2563.615	TEMPORARY IMPACT ATTENUATOR	AMBY	1	1	
12		2573.501	STABILIZED CONSTRUCTION EXIT	LUMP SUM	1	1	
13		2573.503	SEDIMENT CONTROL LOG TYPE COMPOST	LIN FT	600	100	500
14		2574.507	COMMON TOPSOIL BORROW	CU YD	325	100	225
15		2574.508	FERTILIZER TYPE 3	POUND	155	45	110
16		2575.504	EROSION CONTROL BLANKETS CATEGORY 3N	SQ YD	550	550	
17		2575.505	SEEDING	ACRE	0.5	0.15	0.35
18		2575.508	SEEDING MIXTURE 25-121	POUND	55	20	35
19		2575.508	HYDRAULIC BONDED FIBER MATRIX	POUND	1,470	170	1,300
20		2582.503	4" SOLID LINE MULTI COMP	LIN FT	180	180	

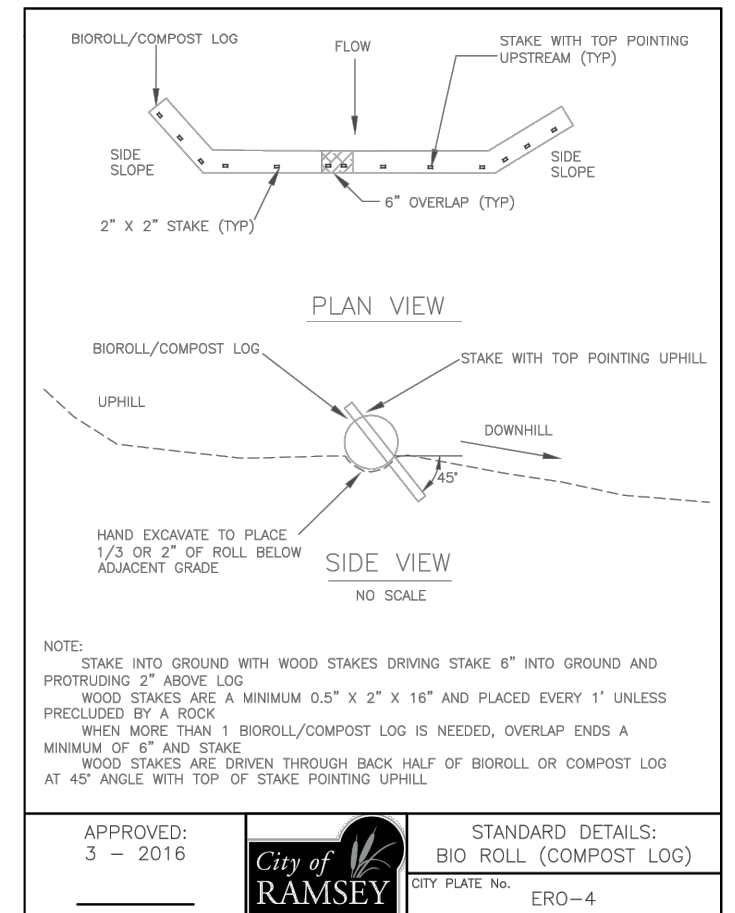
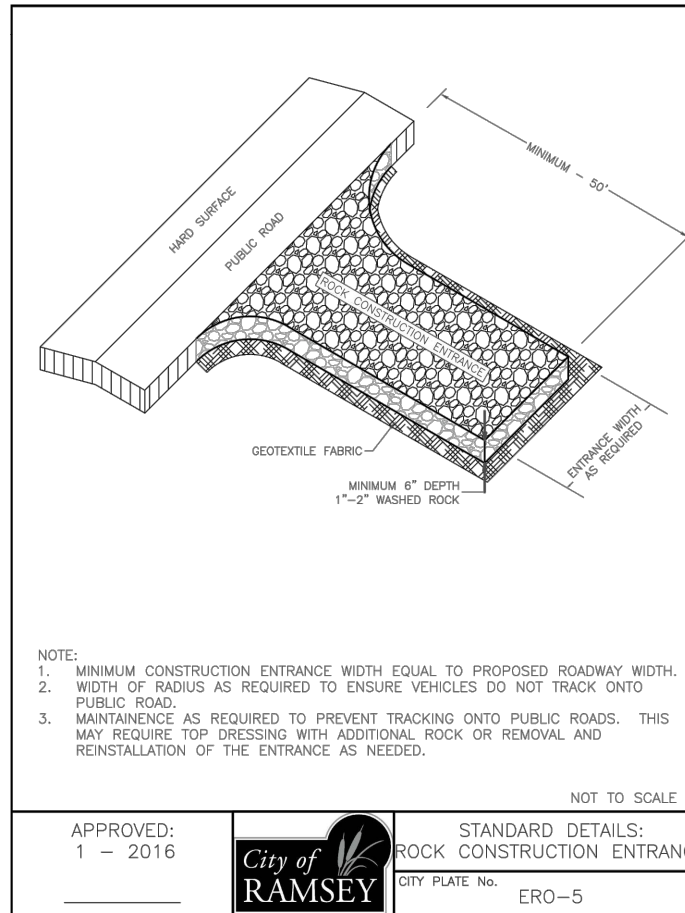
STANDARD PLATES

THE FOLLOWING STANDARD PLATES, APPROVED BY THE FEDERAL HIGHWAY ADMINISTRATION, SHALL APPLY ON THIS PROJECT

PLATE NO.	DESCRIPTION
8000J	CHANNELIZERS (3 SHEETS)
8337C	TEMPORARY PORTABLE PRECAST CONCRETE BARRIER (TYPE F) (3 SHEETS)

BASIS FOR ESTIMATED QUANTITIES

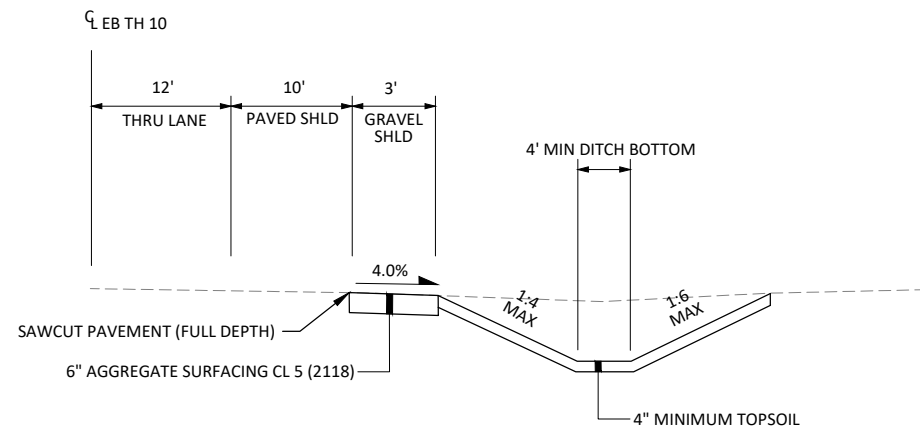
BID ITEM	BASIS
HYDRAULIC BONDED FIBER MATRIX	3500 LBS/ACRE
FERTILIZER TYPE 3	300 LBS/ACRE
SEED MIX 25-121	95 LBS/ACRE



DOLOMITE STREET EARTHWORK SUMMARY

NOTES	ITEMS	UNIT	SITE GRADING
UNADJUSTED VOLUMES BASED ON CONTOURS			
1	DOLOMITE STREET RECLAIM MATERIAL	CU YD	275
	T.H. 10 DITCH EXCAVATION (EV)	CU YD	160
2	TOPSOIL REQUIRED (CV)	CU YD	215
EARTHWORK BALANCE			
TOPSOIL BALANCE			
3	TOPSOIL REQUIRED (LV)	CU YD	325
	TOPSOIL GENERATED (LV)	CU YD	0
	TOPSOIL BORROW REQUIRED	CU YD	325
GRADING MATERIAL BALANCE			
4, 5	MATERIAL GENERATED FROM DITCH EXCAVATION (LV)	CU YD	175
4, 6	RECLAIM MATERIAL GENERATED (LV)	CU YD	235
EARTHWORK QUANTITIES TO SEQ			
	COMMON EXCAVATION	CU YD	160
	COMMON TOPSOIL BORROW	CU YD	325

- NOTES
- 6" RECLAMATION. CONTRACTOR SHALL VERIFY DEPTH OF AGGREGATE PRIOR TO OPERATIONS
 - MINIMUM 4 INCHES OF TOPSOIL PLACED IN ALL SEEDED AREAS DISTURBED DURING CONSTRUCTION.
 - SHRINKAGE FACTOR OF 1.5 APPLIED FROM CV TO LV
 - SWELL FACTOR OF 1.1 APPLIED FROM EV TO LV
 - MATERIAL FROM DITCH EXCAVATION SHALL BE SPREAD ON PAVEMENT REMOVAL AREAS AND GRADED TO DRAIN
 - RECLAIM MATERIAL SHALL REMAIN THE PROPERTY OF THE OWNER. MATERIAL SHALL BE HAULED TO 14100 JASPER STREET, CITY OF RAMSEY PUBLIC WORKS



TH 10 EASTBOUND SHOULDER PROPOSED TYPICAL SECTION

NOT TO SCALE

- Notes:
- INSTALLATION OF 4" OF TOPSOIL REQUIRED ACROSS ALL DISTURBED AREAS.
 - TOPSOIL IS DEFINED AS BLACK DIRT COMPOSED OF UNCONSOLIDATED MATERIAL, LARGELY UNDECOMPOSED ORGANIC MATTER WHICH IS SUITABLE FOUNDATION FOR VEGETATIVE GROWTH.
 - THE COMPOSITION OF TOPSOIL SHOULD CONTAIN NO MORE THAN THIRTY-FIVE PERCENT (35%) SAND CONTENT.

APPROVED: 7 - 2019



STANDARD DETAILS: TOPSOIL REQUIREMENTS
CITY PLATE No. ERO-6

I HEREBY CERTIFY THAT THIS PLAN, SPECIFICATION, OR REPORT WAS PREPARED BY ME OR UNDER MY DIRECT SUPERVISION AND THAT I AM A DULY LICENSED PROFESSIONAL ENGINEER UNDER THE LAWS OF THE STATE OF MINNESOTA.

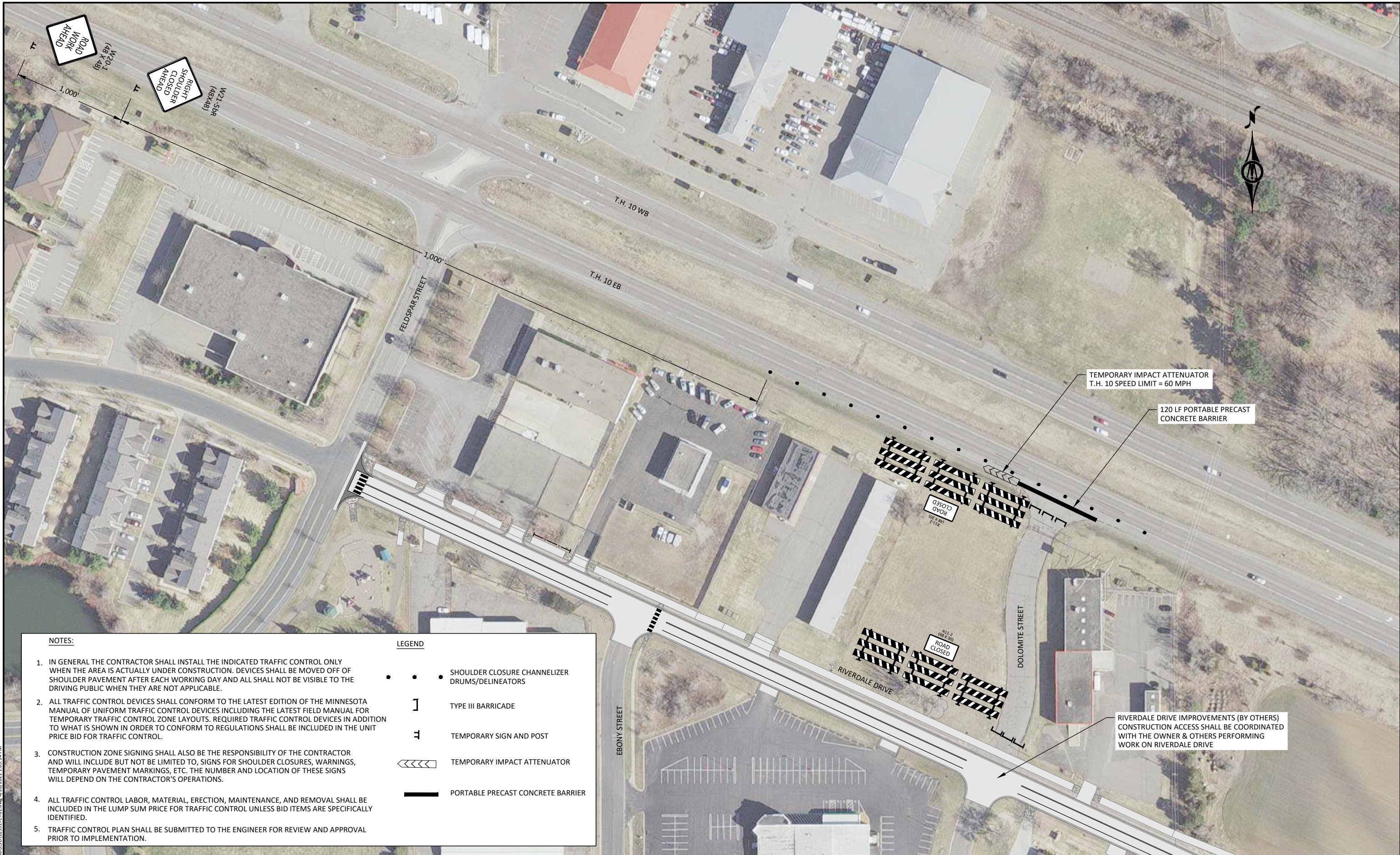
Kevin P. Kiel
KEVIN P. KIEL
LIC. NO. 23211 DATE 4/20/2021



7533 SUNWOOD DR NW, SUITE 206
RAMSEY, MINNESOTA 55303
Phone: (763) 433-2851
Email: Ramsey@bolton-menk.com
www.bolton-menk.com

DESIGNED	NO.	ISSUED FOR	DATE
ZFL			
ZFL			
KPK			
CLIENT PROJ. NO.	21-07		

CITY OF RAMSEY
DOLOMITE STREET DEMOLITION
STATEMENT OF ESTIMATED QUANTITIES
S.A.P. 199-010-013



NOTES:

1. IN GENERAL THE CONTRACTOR SHALL INSTALL THE INDICATED TRAFFIC CONTROL ONLY WHEN THE AREA IS ACTUALLY UNDER CONSTRUCTION. DEVICES SHALL BE MOVED OFF OF SHOULDER PAVEMENT AFTER EACH WORKING DAY AND ALL SHALL NOT BE VISIBLE TO THE DRIVING PUBLIC WHEN THEY ARE NOT APPLICABLE.
2. ALL TRAFFIC CONTROL DEVICES SHALL CONFORM TO THE LATEST EDITION OF THE MINNESOTA MANUAL OF UNIFORM TRAFFIC CONTROL DEVICES INCLUDING THE LATEST FIELD MANUAL FOR TEMPORARY TRAFFIC CONTROL ZONE LAYOUTS. REQUIRED TRAFFIC CONTROL DEVICES IN ADDITION TO WHAT IS SHOWN IN ORDER TO CONFORM TO REGULATIONS SHALL BE INCLUDED IN THE UNIT PRICE BID FOR TRAFFIC CONTROL.
3. CONSTRUCTION ZONE SIGNING SHALL ALSO BE THE RESPONSIBILITY OF THE CONTRACTOR AND WILL INCLUDE BUT NOT BE LIMITED TO, SIGNS FOR SHOULDER CLOSURES, WARNINGS, TEMPORARY PAVEMENT MARKINGS, ETC. THE NUMBER AND LOCATION OF THESE SIGNS WILL DEPEND ON THE CONTRACTOR'S OPERATIONS.
4. ALL TRAFFIC CONTROL LABOR, MATERIAL, ERECTION, MAINTENANCE, AND REMOVAL SHALL BE INCLUDED IN THE LUMP SUM PRICE FOR TRAFFIC CONTROL UNLESS BID ITEMS ARE SPECIFICALLY IDENTIFIED.
5. TRAFFIC CONTROL PLAN SHALL BE SUBMITTED TO THE ENGINEER FOR REVIEW AND APPROVAL PRIOR TO IMPLEMENTATION.

LEGEND

- • • SHOULDER CLOSURE CHANNELIZER DRUMS/DELINEATORS
-] TYPE III BARRICADE
- ⊞ TEMPORARY SIGN AND POST
- ◀◀◀◀ TEMPORARY IMPACT ATTENUATOR
- ▬ PORTABLE PRECAST CONCRETE BARRIER

I HEREBY CERTIFY THAT THIS PLAN, SPECIFICATION, OR REPORT WAS PREPARED BY ME OR UNDER MY DIRECT SUPERVISION AND THAT I AM A DULY LICENSED PROFESSIONAL ENGINEER UNDER THE LAWS OF THE STATE OF MINNESOTA.

Kevin P. Kielb
 KEVIN P. KIELB
 LIC. NO. 23211 DATE 4/20/2021

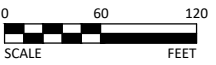


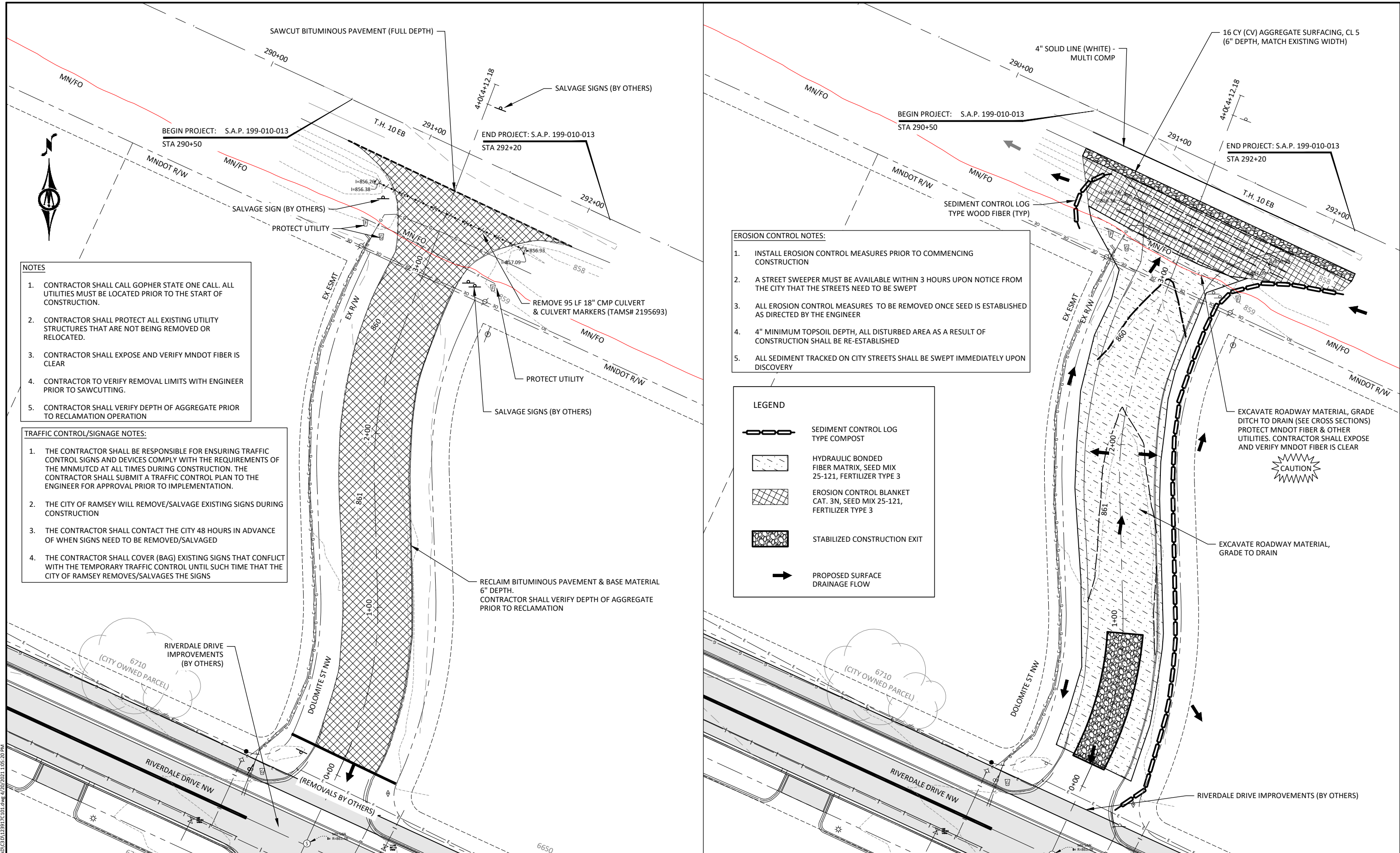
7533 SUNWOOD DR NW, SUITE 206
 RAMSEY, MINNESOTA 55303
 Phone: (763) 433-2851
 Email: Ramsey@bolton-menk.com
 www.bolton-menk.com

DESIGNED	NO.	ISSUED FOR	DATE
ZFL			
ZFL			
CHECKED			
KPK			
CLIENT PROJ. NO.	21-07		

CITY OF RAMSEY
 DOLOMITE STREET DEMOLITION
 TRAFFIC CONTROL
 S.A.P. 199-010-013

© Bolton & Menk, Inc. 2021. All Rights Reserved. P:\RAMSEY\21-07\CAD\125917\01.dwg 4/20/2021 1:05:14 PM





- NOTES**
- CONTRACTOR SHALL CALL GOPHER STATE ONE CALL. ALL UTILITIES MUST BE LOCATED PRIOR TO THE START OF CONSTRUCTION.
 - CONTRACTOR SHALL PROTECT ALL EXISTING UTILITY STRUCTURES THAT ARE NOT BEING REMOVED OR RELOCATED.
 - CONTRACTOR SHALL EXPOSE AND VERIFY MNDOT FIBER IS CLEAR
 - CONTRACTOR TO VERIFY REMOVAL LIMITS WITH ENGINEER PRIOR TO SAWCUTTING.
 - CONTRACTOR SHALL VERIFY DEPTH OF AGGREGATE PRIOR TO RECLAMATION OPERATION

- TRAFFIC CONTROL/SIGNAGE NOTES:**
- THE CONTRACTOR SHALL BE RESPONSIBLE FOR ENSURING TRAFFIC CONTROL SIGNS AND DEVICES COMPLY WITH THE REQUIREMENTS OF THE MN MUTCD AT ALL TIMES DURING CONSTRUCTION. THE CONTRACTOR SHALL SUBMIT A TRAFFIC CONTROL PLAN TO THE ENGINEER FOR APPROVAL PRIOR TO IMPLEMENTATION.
 - THE CITY OF RAMSEY WILL REMOVE/SALVAGE EXISTING SIGNS DURING CONSTRUCTION
 - THE CONTRACTOR SHALL CONTACT THE CITY 48 HOURS IN ADVANCE OF WHEN SIGNS NEED TO BE REMOVED/SALVAGED
 - THE CONTRACTOR SHALL COVER (BAG) EXISTING SIGNS THAT CONFLICT WITH THE TEMPORARY TRAFFIC CONTROL UNTIL SUCH TIME THAT THE CITY OF RAMSEY REMOVES/SALVAGES THE SIGNS

- EROSION CONTROL NOTES:**
- INSTALL EROSION CONTROL MEASURES PRIOR TO COMMENCING CONSTRUCTION
 - A STREET SWEEPER MUST BE AVAILABLE WITHIN 3 HOURS UPON NOTICE FROM THE CITY THAT THE STREETS NEED TO BE SWEEPED
 - ALL EROSION CONTROL MEASURES TO BE REMOVED ONCE SEED IS ESTABLISHED AS DIRECTED BY THE ENGINEER
 - 4" MINIMUM TOPSOIL DEPTH, ALL DISTURBED AREA AS A RESULT OF CONSTRUCTION SHALL BE RE-ESTABLISHED
 - ALL SEDIMENT TRACKED ON CITY STREETS SHALL BE SWEEPED IMMEDIATELY UPON DISCOVERY

LEGEND

- SEDIMENT CONTROL LOG TYPE COMPOST
- HYDRAULIC BONDED FIBER MATRIX, SEED MIX 25-121, FERTILIZER TYPE 3
- EROSION CONTROL BLANKET CAT. 3N, SEED MIX 25-121, FERTILIZER TYPE 3
- STABILIZED CONSTRUCTION EXIT
- PROPOSED SURFACE DRAINAGE FLOW

© Bolton & Menk, Inc. 2021. All Rights Reserved. RAMS01123174 CAD/CSD/123174/101.DWG 4/20/2021 1:05:20 PM



I HEREBY CERTIFY THAT THIS PLAN, SPECIFICATION, OR REPORT WAS PREPARED BY ME OR UNDER MY DIRECT SUPERVISION AND THAT I AM A DULY LICENSED PROFESSIONAL ENGINEER UNDER THE LAWS OF THE STATE OF MINNESOTA.

Kevin P. Kiel
 KEVIN P. KIEL
 LIC. NO. 23211 DATE 4/20/2021

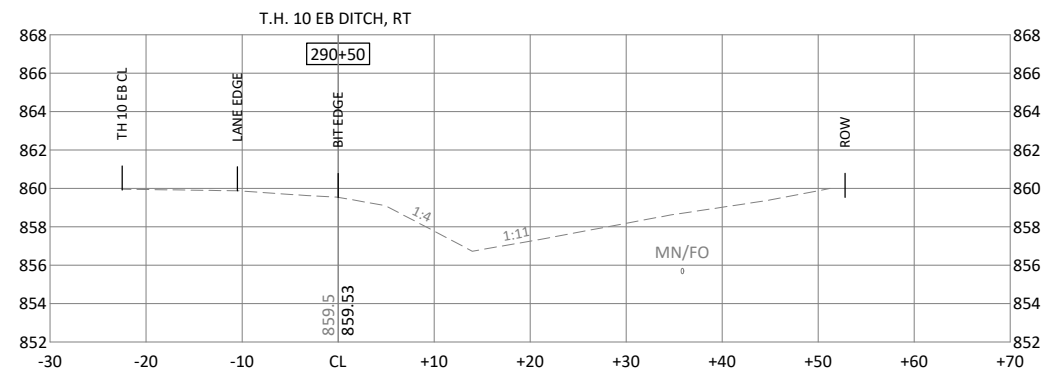
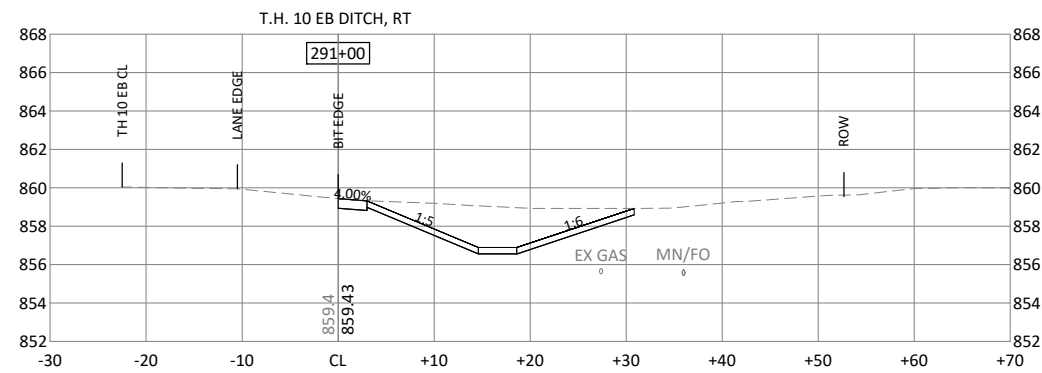
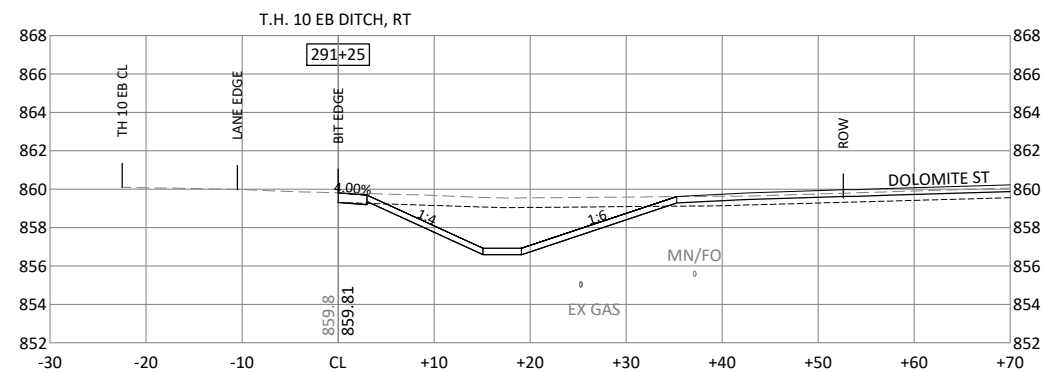
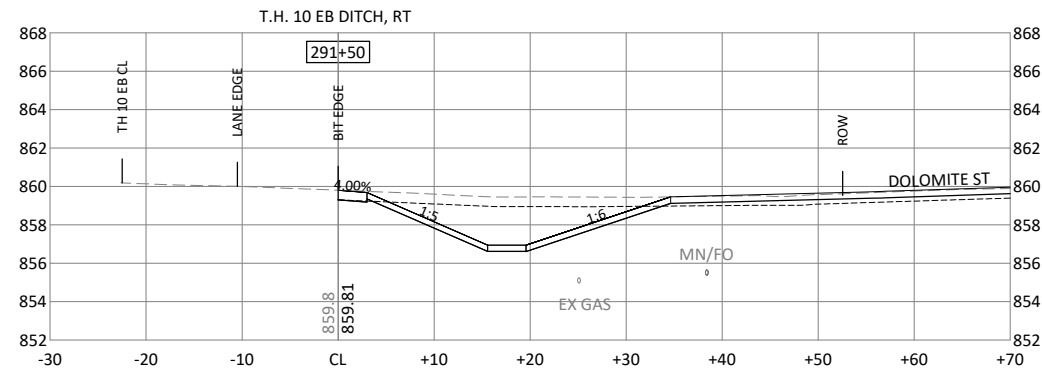


7533 SUNWOOD DR NW, SUITE 206
 RAMSEY, MINNESOTA 55303
 Phone: (763) 433-2851
 Email: Ramsey@bolton-menk.com
 www.bolton-menk.com

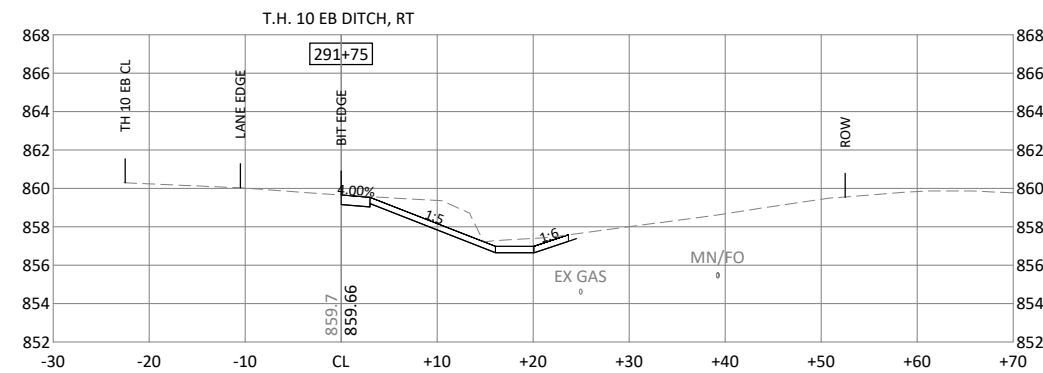
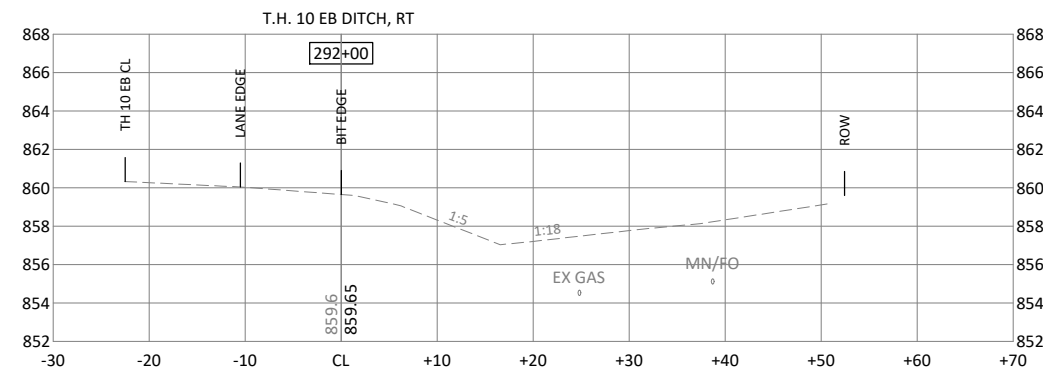
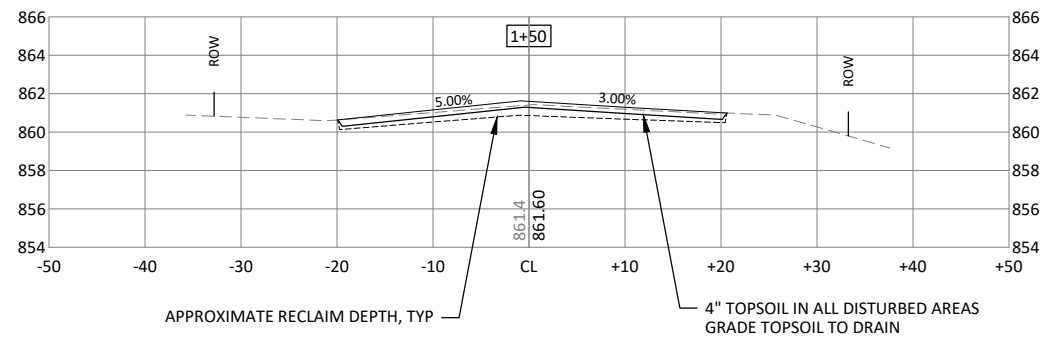
DESIGNED	NO.	ISSUED FOR	DATE
ZFL			
DRAWN			
ZFL			
CHECKED			
KPK			
CLIENT PROJ. NO.	21-07		

CITY OF RAMSEY
 DOLOMITE STREET DEMOLITION
 SITE PLANS
 S.A.P. 199-010-013

© Bolton & Menk, Inc. 2021. All Rights Reserved.
 P:\RAMSEY\1123204\CADD\123204_C_GNDP_MN_DOLOMITE.dwg 4/20/2021 1:05:33 PM



DOLOMITE STREET GRADING, TYP



I HEREBY CERTIFY THAT THIS PLAN, SPECIFICATION, OR REPORT WAS PREPARED BY ME OR UNDER MY DIRECT SUPERVISION AND THAT I AM A DULY LICENSED PROFESSIONAL ENGINEER UNDER THE LAWS OF THE STATE OF MINNESOTA.

Kevin P. Kielb
 KEVIN P. KIELB
 LIC. NO. 23211 DATE 4/20/2021



7533 SUNWOOD DR NW, SUITE 206
 RAMSEY, MINNESOTA 55303
 Phone: (763) 433-2851
 Email: Ramsey@bolton-menk.com
 www.bolton-menk.com

DESIGNED	NO.	ISSUED FOR	DATE
ZFL			
DRAWN			
ZFL			
CHECKED			
KPK			
CLIENT PROJ. NO.			
21-07			

CITY OF RAMSEY
 DOLOMITE STREET DEMOLITION
 T.H. 10 DITCH CROSS SECTIONS
 S.A.P. 199-010-013