

# PRESERVE AT NORTHFORK 2ND ADDITION

CITY OF RAMSEY  
COUNTY OF ANOKA  
SEC.19, TWP.32, RGE.25

**KNOW ALL PERSONS BY THESE PRESENTS:** That Preserve at Northfork LLC, a Minnesota limited liability company, owner of the following described property situated in the State of Minnesota, County of Anoka, to wit:

OUTLOT B, PRESERVE AT NORTHFORK

Has caused the same to be surveyed and platted as PRESERVE AT NORTHFORK 2ND ADDITION and does hereby dedicate to the public for public use the public ways and the drainage and utility easements as created by this plat.

In witness whereof said Preserve at Northfork LLC, a Minnesota limited liability company, has caused these presents to be signed by its proper officers this \_\_\_\_\_ day of \_\_\_\_\_, 20\_\_.

Preserve at Northfork LLC

\_\_\_\_\_  
Zachary A. Brown, President

STATE OF MINNESOTA  
COUNTY OF \_\_\_\_\_

This instrument was acknowledged before me this \_\_\_\_\_ day of \_\_\_\_\_, 20\_\_ by Zachary A. Brown, President of Preserve at Northfork LLC, a Minnesota limited liability company,

\_\_\_\_\_  
(Signature)  
Notary Public, \_\_\_\_\_ County, Minnesota

\_\_\_\_\_  
Notary Printed Name

My Commission Expires: \_\_\_\_\_

### SURVEYORS CERTIFICATE

I Daniel L. Schmidt do hereby certify that this plat was prepared by me or under my direct supervision; that I am a duly Licensed Land Surveyor in the State of Minnesota; that this plat is a correct representation of the boundary survey; that all mathematical data and labels are correctly designated on this plat; that all monuments depicted on this plat have been, or will be correctly set within one year; that all water boundaries and wet lands, as defined in Minnesota Statutes, Section 505.01, Subd. 3, as of the date of this certificate are shown and labeled on this plat; and all public ways are shown and labeled on this plat.

Dated this \_\_\_\_\_ day of \_\_\_\_\_, 20\_\_.

\_\_\_\_\_  
Daniel L. Schmidt, Licensed Land Surveyor  
Minnesota License No. 26147

STATE OF MINNESOTA  
COUNTY OF \_\_\_\_\_

This instrument was acknowledged before me this \_\_\_\_\_ day of \_\_\_\_\_, 20\_\_, by Daniel L. Schmidt.

\_\_\_\_\_  
(Signature)  
Notary Public, Hennepin County, Minnesota

\_\_\_\_\_  
Notary Printed Name

My Commission Expires: \_\_\_\_\_

### CITY COUNCIL, CITY OF RAMSEY, MINNESOTA

This plat of PRESERVE AT NORTHFORK 2ND ADDITION was approved and accepted by the City Council of the City of Ramsey, Minnesota at a regular meeting thereof held this \_\_\_\_\_ day of \_\_\_\_\_, 20\_\_, and said plat is in compliance with the provisions of Minnesota Statutes, Section 505.03, Subd. 2.

### CITY COUNCIL, CITY OF RAMSEY, MINNESOTA

By: \_\_\_\_\_, Mayor      By: \_\_\_\_\_, Clerk

### COUNTY SURVEYOR

I hereby certify that in accordance with Minnesota Statutes, Section 505.021, Subd. 11, this plat has been reviewed and approved this \_\_\_\_\_ day of \_\_\_\_\_, 20\_\_.

By: \_\_\_\_\_  
Charles F. Gitzen  
Anoka County Surveyor

### COUNTY AUDITOR/TREASURER

Pursuant to Minnesota Statutes, Section 505.021, Subd. 9, taxes payable in the year 20\_\_ on the land hereinbefore described have been paid. Also, pursuant to Minnesota Statutes, Section 272.12, there are no delinquent taxes and transfer entered this \_\_\_\_\_ day of \_\_\_\_\_, 20\_\_.

\_\_\_\_\_  
Property Tax Administrator

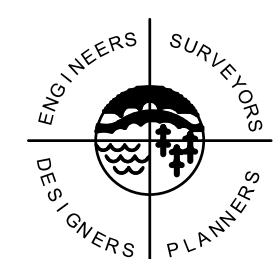
By \_\_\_\_\_, Deputy

### COUNTY RECORDER/REGISTRAR OF TITLES COUNTY OF ANOKA, STATE OF MINNESOTA

I hereby certify that this plat of PRESERVE AT NORTHFORK 2ND ADDITION was filed in the office of the County Recorder/Registrar of Titles for public record on this \_\_\_\_\_ day of \_\_\_\_\_, 20\_\_, at \_\_\_\_\_ o'clock \_\_\_\_M. and was duly recorded as Document Number \_\_\_\_\_

\_\_\_\_\_  
County Recorder/Registrar of Titles

By: \_\_\_\_\_, Deputy



SATHRE-BERGQUIST, INC.

# PRESERVE AT NORTHFORK 2ND ADDITION

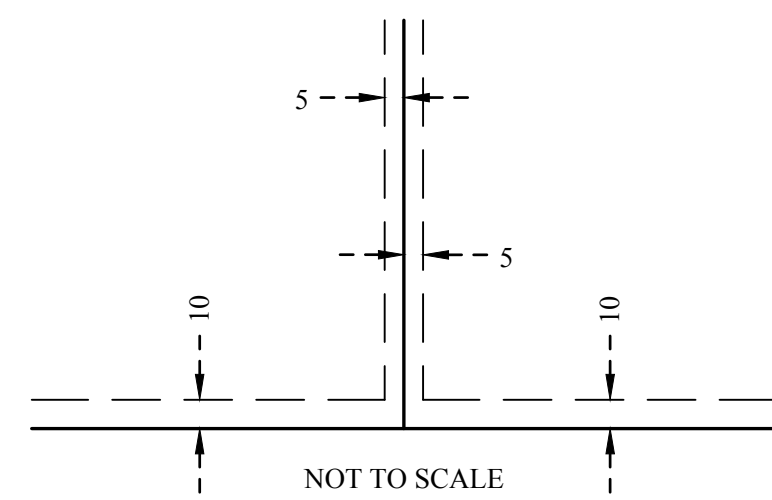
CITY OF RAMSEY  
 COUNTY OF ANOKA  
 SEC.19, TWP.32, RGE.25



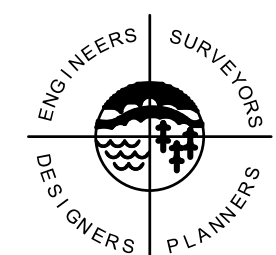
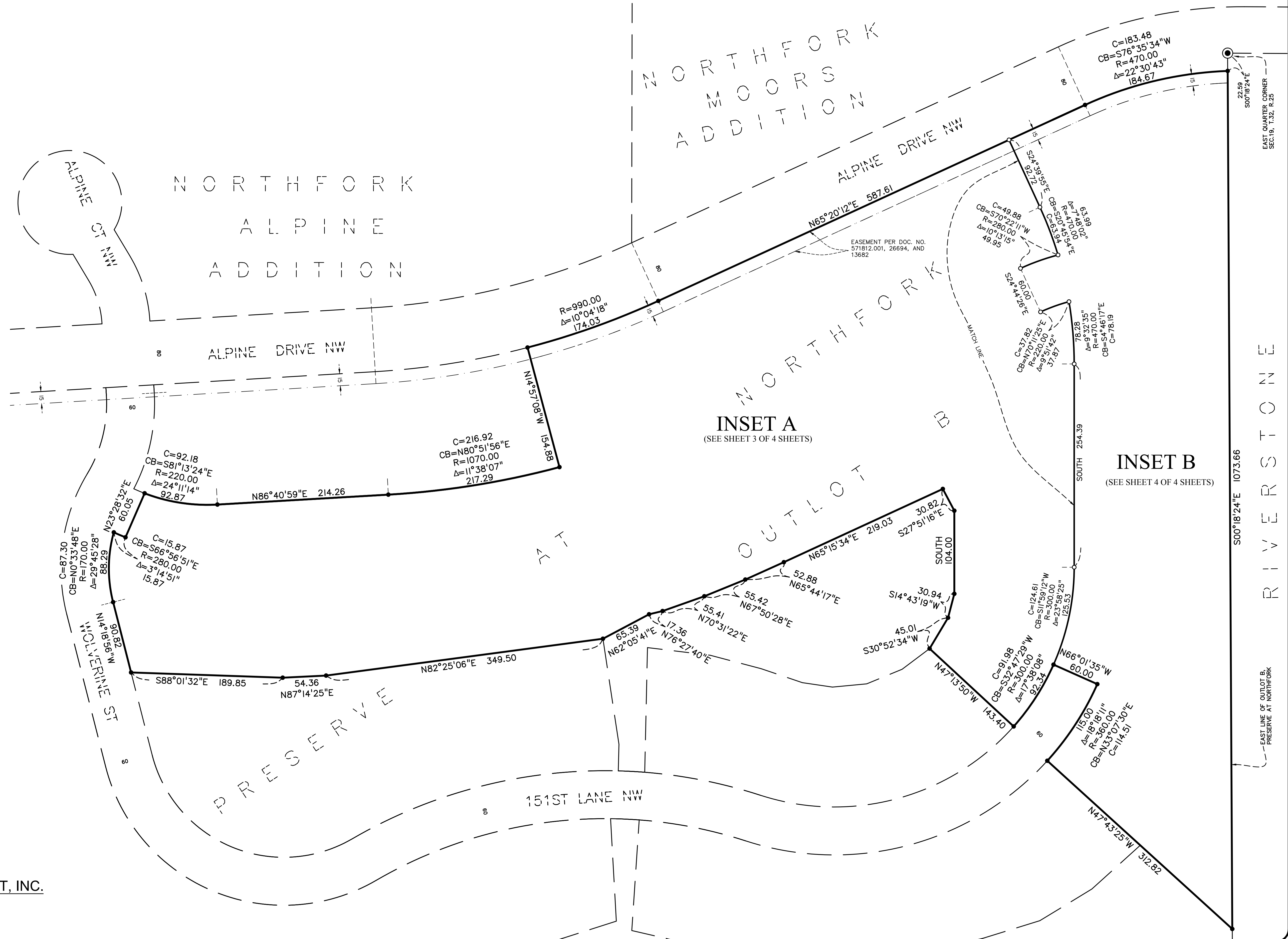
SCALE IN FEET  
 1 INCH = 60 FEET  
 The basis for the bearing system is the East line of  
 OUTLOT B, PRESERVE AT NORTHFORK,  
 which is assumed to bear  
 South 00 degrees 18 minutes 24 seconds East

- Denotes a 1/2 inch by 14 inch iron pipe set and marked by License No. 26147.
- Denotes a Found half inch Iron Pipe marked by License No. 53642, unless shown otherwise.
- ⊙ Denotes a Found Cast-Iron-Monument.

DRAINAGE AND UTILITY EASEMENTS ARE SHOWN THUS:

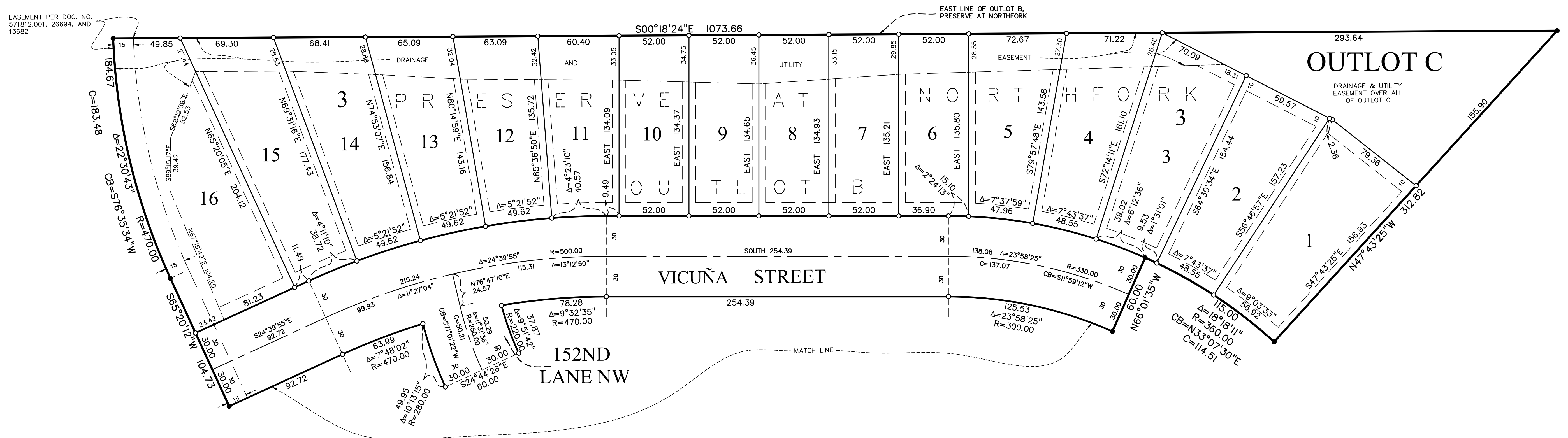


Being 5 feet in width and adjoining lot lines, unless otherwise indicated, and 10 feet in width and adjoining right of way lines, unless otherwise indicated, as shown on the plat.



SATHRE-BERGQUIST, INC.





EASEMENT PER DOC. NO. 571812.001, 26694, AND 13682

EAST LINE OF OUTLOT B, PRESERVE AT NORTHFORK

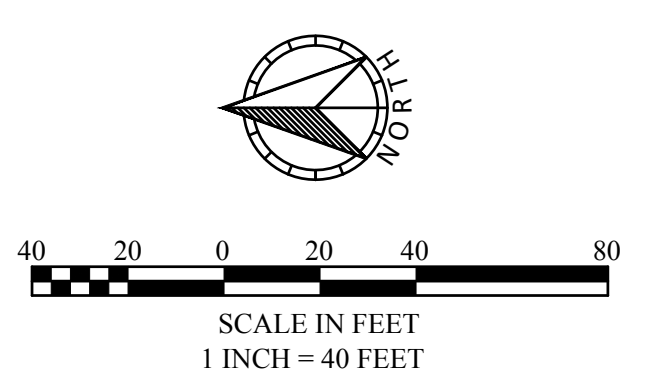
OUTLOT C

DRAINAGE & UTILITY EASEMENT OVER ALL OF OUTLOT C

VICUÑA STREET

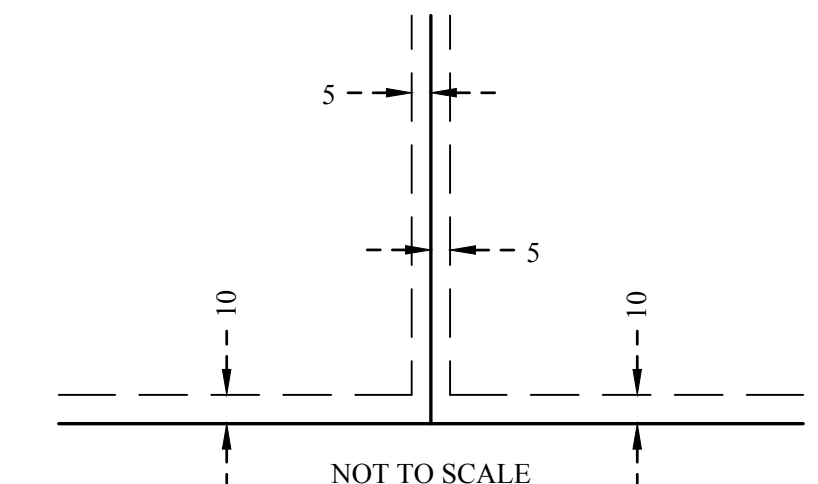
152ND LANE NW

- Denotes a 1/2 inch by 14 inch iron pipe set and marked by License No. 26147.
- Denotes a Found half inch Iron Pipe marked by License No. 53642, unless shown otherwise.



The basis for the bearing system is the East line of OUTLOT B, PRESERVE AT NORTHFORK, which is assumed to bear South 00 degrees 18 minutes 24 seconds East

DRAINAGE AND UTILITY EASEMENTS ARE SHOWN THUS:



Being 5 feet in width and adjoining lot lines, unless otherwise indicated, and 10 feet in width and adjoining right of way lines, unless otherwise indicated, as shown on the plat.



SATHRE-BERGQUIST, INC.